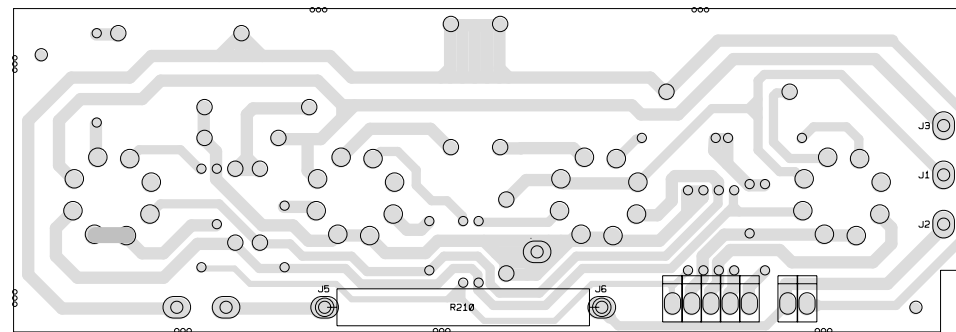


PRIMARY SIDE



B I L L O F M A T E R I A L S R E P O R T

BOARD NAME: 6534 POWER REPORT DATE: 10/19/2009
 ASSEMBLY LEVEL NUMBER: 29100780 DESIGNER: FREDDIE EAVES - 32101596
 PROJECT NUMBER: P0907065
 CBDS

** QTY.	PART NAME	VALUE	PART NUMBER	DESCRIPTION AND DEVICE DESIGNATIONS *****
1	100A25	100A25	30320014	100 MFD 25VDC LYTIC CAP C200
2	100PF	100PF	30340054	100PF-----10%-----50VDC----T/C----T&R C201, C202
2	100W1	100W1	30210003	100---1W---5%---MO--T&R R200, R201
4	700W5	700W5	30250061	700--5W--10%--WW--AXL R203, R205, R207, R209
4	2.2K	2.2K	30240020	2.2K--1/4W--5%---CF--T&R R202, R204, R206, R208
1	400W10FP	400W10FP	30250019	400--10W--10%--FP--AXL R210
4	EL34	EL34	30806604	EL34 VAC TUBE W/INS SOCKET 30806627 V5, V6, V7, V8
9	J4	J	30600005	22GA JUMPER WIRES T&R JP100, JP101, JP102, JP104, JP105, JP107, JP108, JP109, JP110
8	MMPD	73711812	33711812	R93-12 PN C.B. MALE MOLEX PIN J1, J2, J3, J4, J5, J6, J7, J8
7	SPX1D	SPX1D	33717003	1 STAKE PIN J9, J10, J11, J12, J13, J14, J15
2	SR2873	SR2873	30402873	SR2873 2KV, 250MA SILICON DIODE CR200, CR201

 * END OF BILL OF MATERIALS REPORT *
