

TO ADJUST BIAS:

ALLOW UNIT TO WARM UP FOR 20 MINUTES.
ADJUST BIAS CONTROLS SO THAT ONLY THE GREEN LEDS
ARE LIT. FOR UNMATCHED TUBES THIS CONDITION MAY
NOT BE ABLE TO BE MET. IF SO ADJUST CONTROLS
SO THAT ONLY THE RED LEDS ARE LIT. SEE THE OWNER'S
MANUAL FOR TROUBLESHOOTING TIPS USING THE BIAS
CONTROLS AND LEDS.

THIS DRAWING SUPERSEDES 07-419-03/11

PART NO. IS 07-419-04

B	7-28-00	CHANGED PARTS LIST	D000685	RLB		
A	4-11-00	INITIAL ISSUE	D000624			
REV:	DATE:	DESCRIPTION	ECR/ECN NO:	CHNG'D BY:	APPR'D BY:	DATE:
THE INFORMATION CONTAINED ON THIS DRAWING IS PROPRIETARY TO ST. LOUIS MUSIC, INC.						
SIGNATURES:		DATE:		11880 Borman Dr. St. Louis, Missouri 63146		
DRAWN: RLB		12-22-99		FIRST USED ON:		
CHK'D:				SVT-2PRO		
RLS'D				DRAWING TITLE:		
TOLERANCES:		DRAWING SIZE: C		PWA, POWER AMP		
		DRAWING TYPE: ASSEMBLY		DRAWING NO.:		
		CLASS CODE:		07-419-XX		
		SCALE: 1:1		SHEET: 1 OF 4		



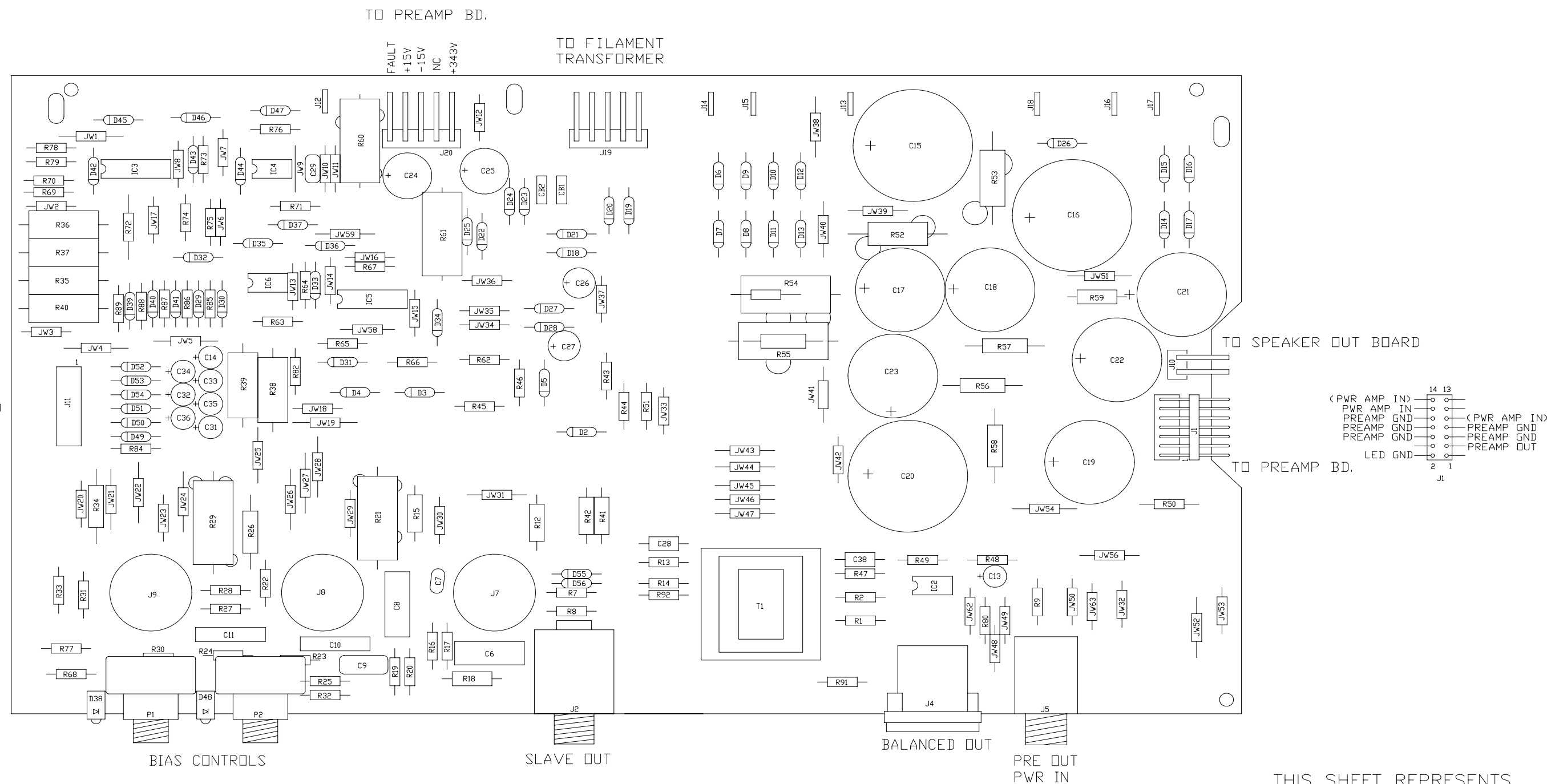
SVT-CL

©2007 LOUD Technologies Inc. All rights reserved

PWA Power Amplifier PCB Schematics and Parts List

PAGE 1


A				B				C				D				E				F			
DESIGNATOR		PART #	DESCRIPTION		D23	21A407-01	1N4007									R60	78-300-05	30	5W				
					D24	21A407-01	1N4007									R61	78-300-05	30	5W				
					D25	21A407-01	1N4007									R62	76-151-01	150					
					D26	21A407-01	1N4007					P1	70-503-20	50KL		R63	76-102-01	1K					
					D27	21A444-01	1N4744	15V/1W				P2	70-503-20	50KL		R64	76-151-01	150					
					D28	21A444-01	1N4744	15V/1W				P3	70-202-22	2KA		R65	76-102-01	1K					
					D29	21A407-01	1N4007									R66	76-102-01	1K					
					D30	21A407-01	1N4007									R67	76-153-01	15K					
					D31	21A407-01	1N4007									R68	76-682-01	6. 8K					
					D32	21A914-01	1N914					R1	76-511-02	511	1%	R69	76-222-01	2. 2K					
					D33	21A914-01	1N914					R2	76-511-02	511	1%	R70	76-222-01	2. 2K					
					D34	21A914-01	1N914					R3	76-470-01	47		R71	76-151-01	150					
					D35	21A914-01	1N914					R7	76-102-01	1K		R72	76-102-01	1K					
					D36	21A914-01	1N914					R8	76-474-01	470K		R73	76-151-01	150					
					D37	21A914-01	1N914					R9	76-222-01	2. 2K		R74	76-102-01	1K					
					D38	21-512-01	RED/GRN	LED				R10	76-182-01	1. 8K		R75	76-102-01	1K					
					D39	21A407-01	1N4007					R11	76-223-01	22k		R76	76-153-01	15K					
					D40	21A407-01	1N4007					R12	77-104-02	100K	1/2W 1%	R77	76-682-01	6. 8K					
					D41	21A407-01	1N4007					R13	76-102-01	1K		R78	76-222-01	2. 2K					
					D42	21A914-01	1N914					R14	76-221-01	220		R79	76-222-01	2. 2K					
					D43	21A914-01	1N914					R15	77-683-01	68K	1/2W	R80	76-105-01	1M					
					D44	21A914-01	1N914					R16	76-105-01	1M		R81	76-182-01	1. 8K					
					D45	21A914-01	1N914					R17	76-821-01	820		R82	76-333-01	33K					
					D46	21A914-01	1N914					R18	77-683-01	68K	1/2W	R83	76-223-01	22k					
					D47	21A914-01	1N914					R19	76-474-01	470K		R84	76-222-01	2. 2K					
					D48	21-512-01	RED/GRN	LED				R20	76-182-01	1. 8K		R85	76-222-01	2. 2K					
					D49	21A370-01	1N3070					R21	78-473-05	47K	5W	R86	76-222-01	2. 2K					
					D50	21A370-01	1N3070					R22	76-154-01	150K		R87	76-222-01	2. 2K					
					D51	21A370-01	1N3070					R23	76-154-01	150K		R88	76-222-01	2. 2K					
					D52	21A370-01	1N3070					R24	76-124-01	120K		R89	76-222-01	2. 2K					
					D53	21A370-01	1N3070					R25	76-683-01	68K		R95	76-222-01	2. 2K					
					D54	21A370-01	1N3070					R26	78-473-01	47K	1W								
					D55	21A370-01	1N3070					R27	76-474-01	470K									
					D56	21A370-01	1N3070					R28	76-182-01	1. 8K									
												R29	78-473-05	47K	5W								
												R30	76-154-01	150K									
												R31	76-154-01	150K									
												R32	76-683-01	68K									
												R33	76-124-01	120K		S1	88-302-01	DUAL	SWITCH				
												R34	78-473-01	47K	1W								
												R35	78-100-92	10	2W-H. SRG	(8)	85-061-01	SPACERS					
												R36	78-100-92	10	2W-H. SRG								
												R37	78-100-92	10	2W-H. SRG	T1	94-025-11	TRANSFORMER					
												R38	78-100-92	10	2W-H. SRG								
												R39	78-100-92	10	2W-H. SRG	PCB1	06A419-01	PC BOARD					
												R40	78-100-92	10	2W-H. SRG								
												R41	78-221-91	220	1W-H. SRG	V1	95-127-01	12AX7					
												R42	78-221-91	220	1W-H. SRG	V2	95-126-01	12AU7					
												R43	76-683-01	68K		V3	95-126-01	12AU7					
												R44	76-472-01	4. 7K									
												R45	76-473-01	47K									
												R46	76-223-01	22K									
												R47	76-104-01	100K									
												R48	76-104-01	100K									
												R49	76-224-01	220K									
												R50	76-103-01	10K									
												R51	76-472-01	4. 7K									
												R52	78-154-02	150K	2W								
												R53	78-154-02	150K	2W								
												* R54	78-153-05	15K	5W								
												* R55	78-183-05	18K	5W								
												R56	78A224-11	220K	1W								
												R57	78A224-11	220K	1W								
												* R58	78-473-01	47K	1W								
												* R59	77-222-01	2. 2K	1/2W								




TO ADJUST BIAS:

ALLOW UNIT TO WARM UP FOR 20 MINUTES.
ADJUST BIAS CONTROLS SO THAT ONLY THE GREEN LEDS
ARE LIT. FOR UNMATCHED TUBES THIS CONDITION MAY
NOT BE ABLE TO BE MET. IF SO ADJUST CONTROLS
SO THAT ONLY THE RED LEDS ARE LIT. SEE THE OWNER'S
MANUAL FOR TROUBLESHOOTING TIPS USING THE BIAS
CONTROLS AND LEDS.

THIS SHEET REPRESENTS
PART NO. 07-419-12

B	7-28-00	CHANGED PARTS LIST	D000685	RLB		
A	4-11-00	INITIAL ISSUE	D000624			
REV:	DATE:	DESCRIPTION	ECR/ECN NO:	CHNG'D BY:	APPR'D BY:	DATE:
THE INFORMATION CONTAINED ON THIS DRAWING IS PROPRIETARY TO ST. LOUIS MUSIC, INC.						
SIGNATURES:			DATE:		 11880 Borman Dr. St. Louis, Missouri 63146	
DRAWN: RLB			12-22-99			
CHK'D:						
RLS'D						
TOLERANCES:		DRAWING SIZE: C		FIRST USED ON: SVT-2PRO		
		DRAWING TYPE: ASSEMBLY		DRAWING TITLE: PWA, POWER AMP		
		CLASS CODE:		DRAWING NO.:		
		SCALE: 1:1		07-419-XX		
		SHEET: 3 OF 4				

A				B				C				D				E				F			
DESIGNATOR		PART #	DESCRIPTION																				
1	CB1	73-101-01	1/4A	THRMSTR	D23	21A407-01	1N4007											R60	78-047-05	47	5W		
	CB2	73-101-01	1/4A	THRMSTR	D24	21A407-01	1N4007											R61	78-047-05	47	5W		
					D25	21A407-01	1N4007											R62	76-151-01	150			
					D26	21A407-01	1N4007											R63	76-102-01	1K			
					D27	21A444-01	1N4744	15V/1W										R64	76-151-01	150			
					D28	21A444-01	1N4744	15V/1W										R65	76-102-01	1K			
					D29	21A407-01	1N4007											R66	76-102-01	1K			
					D30	21A407-01	1N4007											R67	76-153-01	15K			
					D31	21A407-01	1N4007											R68	76-682-01	6. 8K			
					D32	21A914-01	1N914											R69	76-222-01	2. 2K			
2	C6	10-104-10	0. 1	400V	D33	21A914-01	1N914											R70	76-222-01	2. 2K			
	C7	10R500-02	50pf	500V	D34	21A914-01	1N914											R71	76-151-01	150			
	C8	10-104-10	0. 1	400V	D35	21A914-01	1N914											R72	76-102-01	1K			
	C9	10-104-21	0. 1	200V	D36	21A914-01	1N914											R73	76-151-01	150			
	C10	10-473-10	0. 047	400V	D37	21A914-01	1N914											R74	76-102-01	1K			
	C11	10-473-10	0. 047	400V	D38	21-512-01	RED/GRN	LED										R75	76-102-01	1K			
					D39	21A407-01	1N4007											R76	76-153-01	15K			
					D40	21A407-01	1N4007											R77	76-682-01	6. 8K			
					D41	21A407-01	1N4007											R78	76-222-01	2. 2K			
					D42	21A914-01	1N914											R79	76-222-01	2. 2K			
3	C13	12R106-35	10uF	35V	D43	21A914-01	1N914											R80	76-105-01	1M			
	C14	12R105-50	1uF	50V	D44	21A914-01	1N914																
	C15	12-107-30	100	450V	D45	21A914-01	1N914																
	C16	12-107-30	100	450V	D46	21A914-01	1N914																
	C17	12-476-42	47	450V	D47	21A914-01	1N914																
	C18	12-476-42	47	450V	D48	21-512-01	RED/GRN	LED															
	C19	12-476-42	47	450V	D49	21A370-01	1N3070																
	C20	12-107-30	100	450V	D50	21A370-01	1N3070																
	C21	12-476-42	47	450V	D51	21A370-01	1N3070																
	C22	12-476-42	47	450V	D52	21A370-01	1N3070																
4	C23	12-107-62	100	250V	D53	21A370-01	1N3070																
	C24	12R227-32	220	35V	D54	21A370-01	1N3070																
	C25	12R227-32	220	35V	D55	21A370-01	1N3070																
	C26	12R227-12	220	16V	D56	21A370-01	1N3070																
	C27	12R227-12	220	16V																			
	C28	10A473-11	0. 047	100V																			
	C29	10R473-03	0. 047	100V																			
5	C31	12R106-35	10uF	35V	IC2	37-072-01	TL072																
	C32	12R106-35	10uF	35V	IC3	37-074-01	TL074																
	C33	12R106-35	10uF	35V	IC4	37-072-01	TL072																
	C34	12R106-35	10uF	35V	IC5	37-074-01	TL074																
	C35	12R106-35	10uF	35V	IC6	37-072-01	TL072																
	C36	12R106-35	10uF	35V																			
	C38	10A104-01	0. 1uF	50V																			
6	D2	21A914-01	1N914		J1	17-101-14	14PIN	R/A-HEADER															
	D3	21A370-01	1N3070		J2	39-116-01	T/S	JACK															
	D4	21A370-01	1N3070																				
	D5	21A914-01	1N914		J4	39-321-01	MALE	XLR															
	D6	21A407-01	1N4007		J5	39-125-01	JACK																
	D7	21A407-01	1N4007																				
	D8	21A407-01	1N4007		J7	17-450-09	9PIN	TUBE SOCKET															
	D9	21A407-01	1N4007		J8	17-450-09	9PIN	TUBE SOCKET															
	D10	21A407-01	1N4007		J9	17-450-09	9PIN	TUBE SOCKET															
	D11	21A407-01	1N4007		J10	17-311-02	2PIN	R/A-HEADER															
7	D12	21A407-01	1N4007		J11	17-101-16	16PIN	DR_HEADER															
	D13	21A407-01	1N4007		J12	17-836-01	TAB																
	D14	21A407-01	1N4007		J13	17-836-01	TAB																
	D15	21A407-01	1N4007		J14	17-836-01	TAB																
	D16	21A407-01	1N4007		J15	17-836-01	TAB																
	D17	21A407-01	1N4007		J16	17-836-01	TAB																
	D18	21A407-01	1N4007		J17	17-836-01	TAB																
	D19	21A407-01	1N4007		J18	17-836-01	TAB																
	D20	21A407-01	1N4007		J19	17-311-05	5PIN	R/A-HEADER															
	D21	21A407-01	1N4007		J20	17-311-05	5PIN	R/A-HEADER															
8	D22	21A407-01	1N4007																				
					JW1-JW54	76-000-05	JUMPER																
					JW56	76-000-05	JUMPER																
					JW58-JW59	76-000-05	JUMPER																
					JW62-JW63	76-000-05	JUMPER																
* USES SPACERS																							
THIS SHEET REPRESENTS PART NO. 07-419-12																							
B 7-28-00 CHANGED PARTS LIST D000685 RLB																							
A 4-11-00 INITIAL ISSUE D000624																							
REV: DATE: DESCRIPTION ECR/ECN NO: CHNG'D BY: APPR'D BY: DATE:																							
THE INFORMATION CONTAINED ON THIS DRAWING IS PROPRIETARY TO ST. LOUIS MUSIC, INC.																							
SIGNATURES: DATE: 12-22-99																							
DRAWN: RLB																							
CHK'D: FIRST USED ON: SVT-2PRO																							
RLS'D																							
TOLERANCES: DRAWING SIZE: C DRAWING TITLE: PWA, POWER AMP																							
DRAWING TYPE: ASSEMBLY																							
CLASS CODE: DRAWING NO.: 07-419-XX																							
SCALE: 1:1 SHEET: 4 OF 4																							



SVT-CL

©2007 LOUD Technologies Inc. All rights reserved

PWA Power Amplifier PCB Schematics and Parts List

PAGE 4