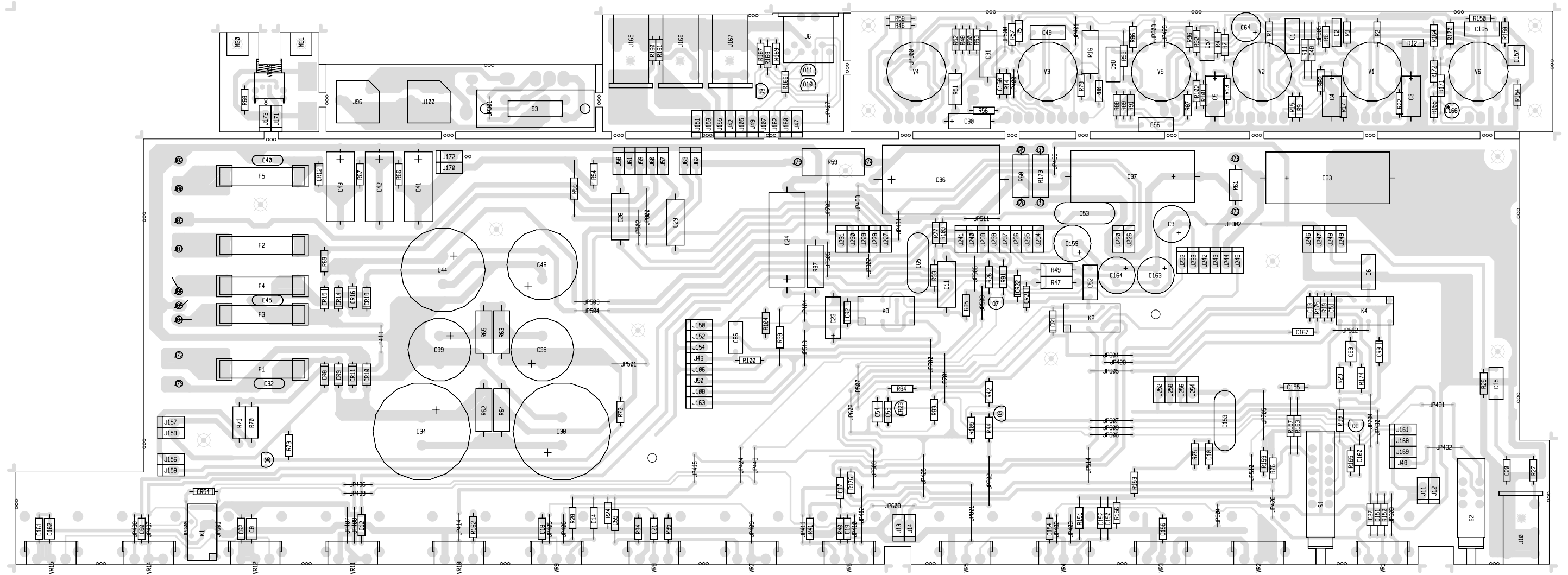


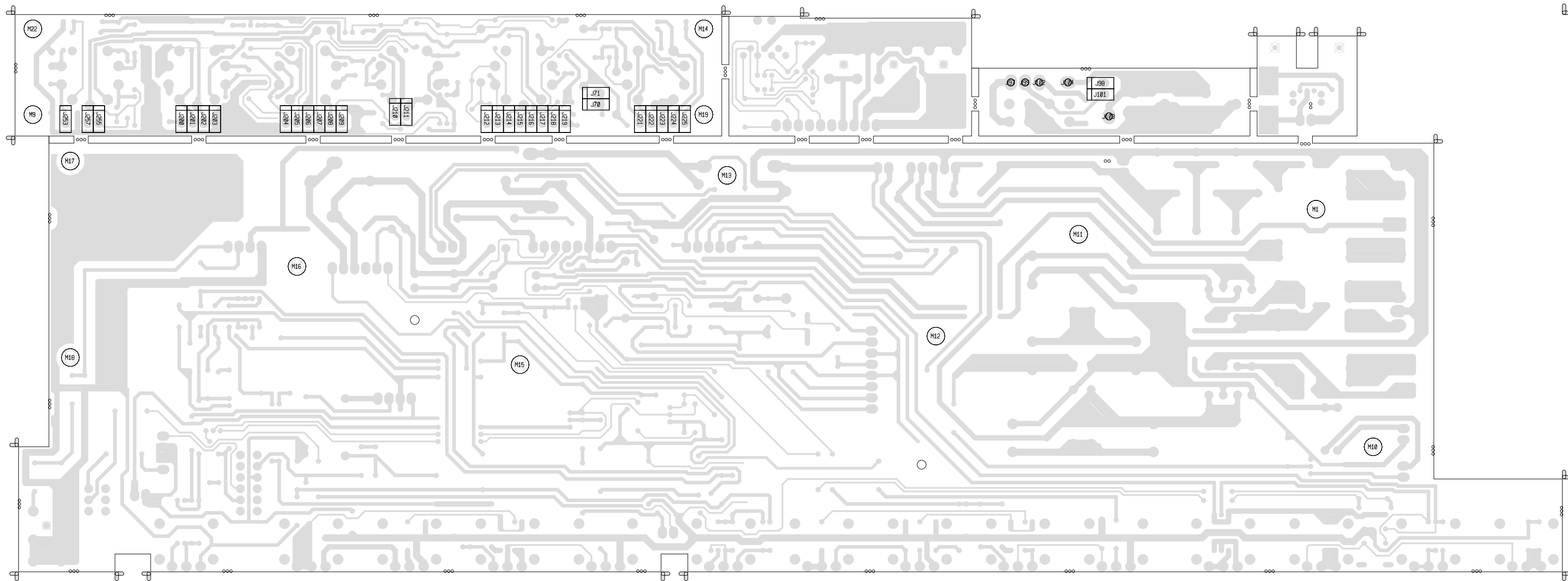
NOTICE: THIS CIRCUITRY IS PROTECTED BY
U.S. PATENT NOS. 5,197,102 OWNED BY
PEAVEY ELECTRONICS CORP. USE
OR COPYING WITHOUT EXPRESS
WRITTEN AUTHORITY FROM PEAVEY
IS STRICTLY FORBIDDEN AND
VIOLATORS WILL BE PROSECUTED
TO THE FULLEST EXTENT ALLOWED
UNDER U.S. PATENT LAWS.

COPYRIGHT 2001 PEAVEY ELECTRONICS CORP. PRINTED IN U.S.A.

PEAVEY ELECTRONICS CORP.			
711 A STREET			
Meridian, Mississippi 39301			
TITLE			
6534 PREAMP			
SIZE	CODE	NUMBER	REV
D		P0907065	
PRINT			
DATE	OCT 20 2009	SHEET	1 OF 1



6534 PREAMP PRIMARY SIDE



6534 PREAMP SECONDARY SIDE

BILL OF MATERIALS REPORT

BOARD NAME: 6534 Pre Amp REPORT DATE: 10/21/09
 ASSEMBLY LEVEL NUMBER: 29100790 DESIGNER: FREDDIE EAVES
 PROJECT NUMBER: P0907065
 CBDS

PART	PART	DESCRIPTION AND	
** QTY.	NAME	VALUE	NUMBER DEVICE DESIGNATIONS *****

1	32101597	32101597	32101597 PCB - Created from 72100833
2	.001	.001	30340000 .001MF----10%----50VDC----MON----T&R C19, C48
1	.001R630	.001R630	30320160 .001MFD 630VDC B-BOX C2
1	.0022	.0022	30340004 .0022MF---10%----50VDC----T/C----T&R C13
1	.0033	.0033	30340006 .0033MF---10%----50VDC----T/C----T&R C10
1	.0047	.0047	30340007 .0047MF---10%----50VDC----MON----T&R C158
3	.0068	.0068	30340008 .0068MF---10%----50VDC----MON----T&R C12, C27, C60
1	.01	.01	30340011 .01MF-----10%----50VDC----T/C----T&R C59
3	.01CD	.01CD	30320248 .01MF----20%---1000VDC---CD--T&A C32, C40, C45

4 .022 .022 30340012 .022MF----10%----50VDC----MON----T&R
C18, C21, C154, C156

8 .022R400 .022R400 30320106 .022 MFD 400V RADIAL MYLAR
C1, C6, C49, C52, C56, C57, C58, C165

4 .033 .033 30340014 .033MF----10%----50VDC----MON----T&R
C55, C62, C155, C161

4 .047A400 .047A400 30320105 .047MFD 450 VOLT T&R CAP
C11, C28, C29, C31

1 .068 .068 30340018 .068MF----10%----50VDC----MON----T&R
C63

4 .1P10 .1P10 30340101 .1MF-----10%----50VDC----MON----T&R
C8, C54, C160, C162

2 .1R250MY .1R250MY 30320096 .1 MFD 250VDC MYLAR CA/BR
C15, C66

3 .33R400 .33R400 30320107 .33MF-----10%----400VDC---MYLAR--R/W
C53, C65, C153

1 .33SF2 .33SF2 30330146 .33MF 5% 100VDC SF T&A
C157

1 1.5K 1.5K 30240018 1.5K--1/4W--5%----CF--T&R
R42

2 1.5KW1 1.5KW1 30210007 1.5K--1W----5%----MO--T&R
R70, R71

3 1.82KP1 1.82KP1 30241078 1.82K-1/4W--1%----CF--T&R
R12, R13, R17

1 1000A35 1000A35 30320038 1000 MFD 35VDC LYTIC CAP

C24

4 1000R35 1000R35 30320186 1000MF----20%----35VDC--EL--T&A
C9, C159, C163, C164

7 100K 100K 30240034 100K--1/4W--5%----CF--T&R
R33, R48, R58, R101, R103, R104, R171

3 100KP1 100KP1 30240151 100K--1/4W--1%----MF--T&R
R1, R3, R86

1 100KW1 100KW1 30210017 100K--1W----5%----MO--T&R
R16

1 100PF 100PF 30340054 100PF-----10%----50VDC----T/C----T&R
C150

2 100V350 100V350 30320130 100 MFD 350VDC RADIAL SNAP-IN
C35, C39

3 10A150 10A150 30320016 10 MFD 150VDC LYTIC - AXIAL LEAD
C41, C42, C43

1 10ASB 10ASB 30900599 10 AMP S/B FUSE WITH 2 FUSECLIPS
#30900816
F2

6 10K 10K 30240025 10K---1/4W--5%----CF--T&R
R27, R156, R166, R167, R168, R169

2 10KAVB 31190528 31190528 10K 20% AUD MIN VPC W/BACKET
VR12, VR15

2 10KW1 10KW1 30210018 10K---1W----5%----MO--T&R
R51, R61

4 125SOWD 30900788 30900788 SPACER, 1/8,R(#4),.187 SWAGE ALUM.

M9, M14, M19, M22

6 12AX7 12AX7 30806631 9 PIN CERAMIC TUBE SOCKET
V1, V2, V3, V4, V5, V6

1 12K 12K 30240057 12K---1/4W--5%----CF--T&R
R68

3 12VRELAY 31322277 31322277 DPDT OMRON RELAY 12VDC
K1, K2, K3

1 18K 18K 30240028 18K---1/4W--5%----CF--T&R
R153

3 1A50NP 1A50NP 30320138 1MFD 10% 50VNP EL T&R
C3, C4, C5

3 1AFB 1AFB 30900085 AGC 1 AMP FUSE with 2 fuseclips #30900816
F3, F4, F5

3 1K 1K 30240017 1K----1/4W--5%----CF--T&R
R67, R80, R165

20 1M 1M 30240039 1M----1/4W--5%----CF--T&R
R9, R25, R26, R32, R40, R41, R50, R53,
R72, R79, R84, R87, R88, R91, R100,
R159, R160, R161, R162, R176

2 1MAVB 31190516 31190516 1 MEG AUD MIN VPC 20% W/BRKT
VR5, VR10

6 1MAVBP5 31190522 31190522 1 MEG AUD MIN VPC 5% TAPER W/BRKT
VR1, VR2, VR6, VR7, VR11, VR14

5 1N4003 1N4003 30464003 1N4003 200V SILICON DIODE
CR12, CR14, CR15, CR16, CR18

4 1N4007 1N4007 30464007 1N4007 1KV, 1A, SILICON DIODE
CR8, CR9, CR10, CR11

6 1N4148 4148 30464148 1N4148 75V 10MA SILICON DIODE
CR1, CR2, CR3, CR21, CR22, CR54

4 2.2K 2.2K 30240020 2.2K--1/4W--5%----CF--T&R
R93, R102, R155, R158

1 2.2M 2.2M 30240040 2.2M--1/4W--5%----CF--T&R
R81

1 2.2R50 2.2R50 30320180 2.2MF-----20%----50VDC---EL--T&A
C166

1 8.2K 8.2K 30240049 8.2K--1/4W--5%----CF--T&R
R66

1 210KP1 210KP1 30240137 210K 1% 1/4W MF T&R
R2

1 2200R35 2200V35 30320113 2200 MFD 35VDC RADIAL LYTIC
C46

9 220K 220K 30240036 220K--1/4W--5%----CF--T&R
R4, R7, R54, R55, R85, R96, R150, R170,
R172

4 220KW1 220KW1 30210008 220K--1W----5%----MO--T&R
R62, R63, R64, R65

1 220R50 220R50 30320187 220MF-----20%----50VDC---EL--T&A
C64

2 22A25 22A25 30320012 22MFD 20% 25VDC EL AXL
C23, C30

2	22A450	22A450	30320020	22 MFD 450VDC LYTIC CAP C33, C37
3	22K	22K	30240029	22K---1/4W--5%----CF--T&R R44, R75, R174
2	22KW1	22KW1	30210005	22K---1W----5%----MO--T&R R60, R173
2	250KBVB	31190515	31190515	250K LIN MIN VPC W/BRACKET VR4, VR9
1	25KAVB	31190559	31190559	25KA MIN VPC W/BRACKET VR3
1	2AFB	2AFB	30900133	AGC 2 AMP FUSE F1
1	2N3919	3919	30463919	SKA-3919 TO92 NPN TRANS T&A Q6
1	3.3K	3.3K	30240022	3.3K--1/4W--5%----CF--T&R R14
1	330K	330K	30240037	330K--1/4W--5%----CF--T&R R11
2	330V350	330V350	30320169	330 MFD 350 VDC VERT. SNAP-IN C34, C38
3	33K	33K	30240030	33K---1/4W--5%----CF--T&R R94, R151, R163
2	39K	39K	30240048	39K---1/4W--5%----CF--T&R R15, R56
1	39PF	39PF	30340052	39PF-----50VDC----T/C----T&R

C20

4	4.7K	4.7K	30240023	4.7K--1/4W--5%----CF--T&R	R57, R69, R73, R105
2	4.7W1	4.7W1	30210015	4.7---1W----5%----MO--T&R	R47, R49
1	47	47	30240008	47----1/4W--5%----CF--T&R	R83
1	470	470	30240015	470---1/4W--5%----CF--T&R	R52
1	4700R35	4700R35	30350200	4700 MFD 35VDC RADIAL SNAP-IN	C44
7	470K	470K	30240038	470K--1/4W--5%----CF--T&R	R6, R19, R82, R89, R152, R154, R164
5	470PF	470PF	30340058	470PF-----10%----50VDC----T/C----T&R	C14, C17, C51, C151, C152
1	47A500	47A500	30320005	47MF 500VDC ELECTROLYTIC -AXIAL	C36
2	47FP	47FP	30240090	47FP--1/4W--5%----FP--T&R	R76, R77
3	47K	47K	30240031	47K---1/4W--5%----CF--T&R	R24, R28, R95
1	47W1	47W1	30210011	47----1W----5%----MO--T&R	R37
1	4KW5	4KW5	71600281	4K--5W--10%--WW--AXL	R59

24 500SOWD 30900781 30900781 SPACER, 1/2,R(#4),.187 SWAGE ALUM.
 M1, M2, M3, M4, M5, M6, M7, M8, M10,
 M11, M12, M13, M15, M16, M17, M18, M20,
 M21, M23, M24, M25, M26, M27, M28

1 50KBVB 31190511 31190511 50K LIN MIN VPC W/BACKET
 VR8

1 3.3K 3.3K 30240022 3.3K--1/4W--5%----CF--T&R
 R23

4 6531 6531 30466531 MPS-6531 TO92 NPN TRANS. T&A
 Q3, Q9, Q10, Q11

2 68K 68K 30240032 68K---1/4W--5%----CF--T&R
 R22, R175

1 68KP1 68KP1 30241070 68K---1/4W--1%----CF--T&R
 R5

2 820 820 30240019 820---1/4W--5%----CF--T&R
 R38, R39

1 820PF 820PF 30340062 820PF-----10%----50VDC----T/C----T&R
 C167

2 82K 82K 30240033 82K---1/4W--5%----CF--T&R
 R46, R157

1 DIN7RA 31466226 31466226 CONN 7P R/A PCMNT DIN W/ 4 MNT. HOLES
 J6

1 DRASW DRASW 31322256 PC MNT SWITCH DUAL
 S1

3 FMPU 33711811 33711811 M118-171 C.B. FEMALE MOLEX PIN
J83, J84, J86

2 HIDMNI 31466214 31466214 2 TIP HID JACK NINS W/SPD
J96, J100

2 J174 J174 30460174 J-174 30V TO-92 P-CHAN FET T&A
Q7, Q8

6 J325 J 30600005 22GA JUMPER WIRES T&R
JP300, JP301, JP302, JP303, JP304,
JP305,

33 J4 J 30600005 22GA JUMPER WIRES T&R
JP400, JP401, JP402, JP403, JP404,
JP405, JP406, JP407, JP408, JP409,
JP410, JP411, JP412, JP413, JP414,
JP415, JP424, JP425, JP426, JP427,
JP428, JP429, JP430, JP431, JP432,
JP433, JP434, JP435, JP436, JP437,
JP438, JP439, JP448,

15 J5 J 30600005 22GA JUMPER WIRES T&R
JP500, JP501, JP502, JP503, JP504,
JP505, JP506, JP507, JP508, JP509,
JP510, JP511, JP512, JP513, JP514,

10 J6 J 30600005 22GA JUMPER WIRES T&R
JP600, JP601, JP602, JP603, JP604,
JP605, JP606, JP607, JP608, JP609,

6 J7 J 30600005 22GA JUMPER WIRES T&R
JP700, JP701, JP702, JP703, JP704,

JP705,

3 J8 J 30600005 22GA JUMPER WIRES T&R
JP800, JP801, JP802,

2 LBRKT1 31500238 31500238 #74 L-BRACKET W/4-40 HOLE
M30, M31

1 LOMRELAY 31322378 31322378 RELAY, 12V DPDT - LO MIC
K4

1 MAC97 MAC97 30460097 MAC97-6 400V .6A TO-92 TRIAC T&A
CR23

5 MMPD 33711812 33711812 R93-12 PN C.B. MALE MOLEX PIN
J97, J99, J102, J103, J104

14 MMPU 33711812 33711812 R93-12 PN C.B. MALE MOLEX PIN
J15, J16, J72, J73, J74, J75, J76, J77,
J78, J79, J80, J81, J82, J85

1 POT0452 31190452 31190452 10kb vpc 6.5mm
VR16

1 PRASW PRASW 31322289 DPDT P/P CB MNT SWITCH
S2

4 RASN6165 31466165 31466165 JK R/A 12.5MM NIN STEREO -88
J10, J165, J166, J167

102 SPX1 SPX1 33717003 1 STAKE PIN
J11, J12, J13, J14, J42, J43, J47, J48,
J49, J50, J57, J58, J59, J60, J61, J62,
J63, J70, J71, J98, J101, J105, J106,
J107, J108, J150, J151, J152, J153,
J154, J155, J156, J157, J158, J159,
J160, J161, J162, J163, J168, J169,

J170, J171, J172, J173, J200, J201,
J202, J203, J204, J205, J206, J207,
J208, J209, J210, J211, J212, J213,
J214, J215, J216, J217, J218, J219,
J220, J221, J222, J223, J224, J225,
J226, J227, J228, J229, J230, J231,
J232, J233, J234, J235, J236, J237,
J238, J239, J240, J241, J242, J243,
J244, J245, J246, J247, J248, J249,
J252, J253, J254, J255, J256, J257,
J258,

1 SW2328 SW2328 31322328 2PTT PC MOUNT SLIDE SWITCH
S3

* END OF BILL OF MATERIALS REPORT *
