

**FOR 07-673-01 / -02 ASSEMBLIES**

**CAUTION:**  
THIS SCHEMATIC IS PROVIDED FOR USE BY QUALIFIED PERSONNEL.  
SEE SAFETY OR ELECTRICAL SYMBOLS FOR REFERENCE TO QUALIFIED  
PERSONNEL. PRESSURE IS NOT TO BE EXERCISED BEYOND  
THAT EXPLAINED IN THE OPERATING INSTRUCTIONS.

- NOTES:**
- 1) CAUTION: SHOCK HAZARD!! THIS UNIT CONTAINS HAZARDOUS VOLTAGE. DISCONNECT POWER BEFORE TOUCHING INTERNAL PARTS.
  - 2) UNLESS NOTED, RESISTOR VALUES IN OHMS, 1/4W-5% TOL. CAPACITOR VALUES IN MICROFARADS. 50V-10% TOL.
  - 3) AND 10 MEGOHM DIGITAL VOLTMETER.

**TEST POINT CONDITIONS NOTE :**  
1 KHz INPUT SINEWAVE 120mV @ 0 dB  
INPUT JACK, 120VAC LINE, VOLUME: GAIN & HP LEVEL @ "10"  
TONES @ "5", DC VOLTAGES WITH NO SIGNAL APPLIED.

REV	Date	DESCRIPTION	Ent(s)/Ect(s)	Chgd By	Appvd by	Date
1	05/20/06	ADDED-Q2 ASSEMBLY		WFB		
0	12/15/05	CONTROL ISSUE		WFB		

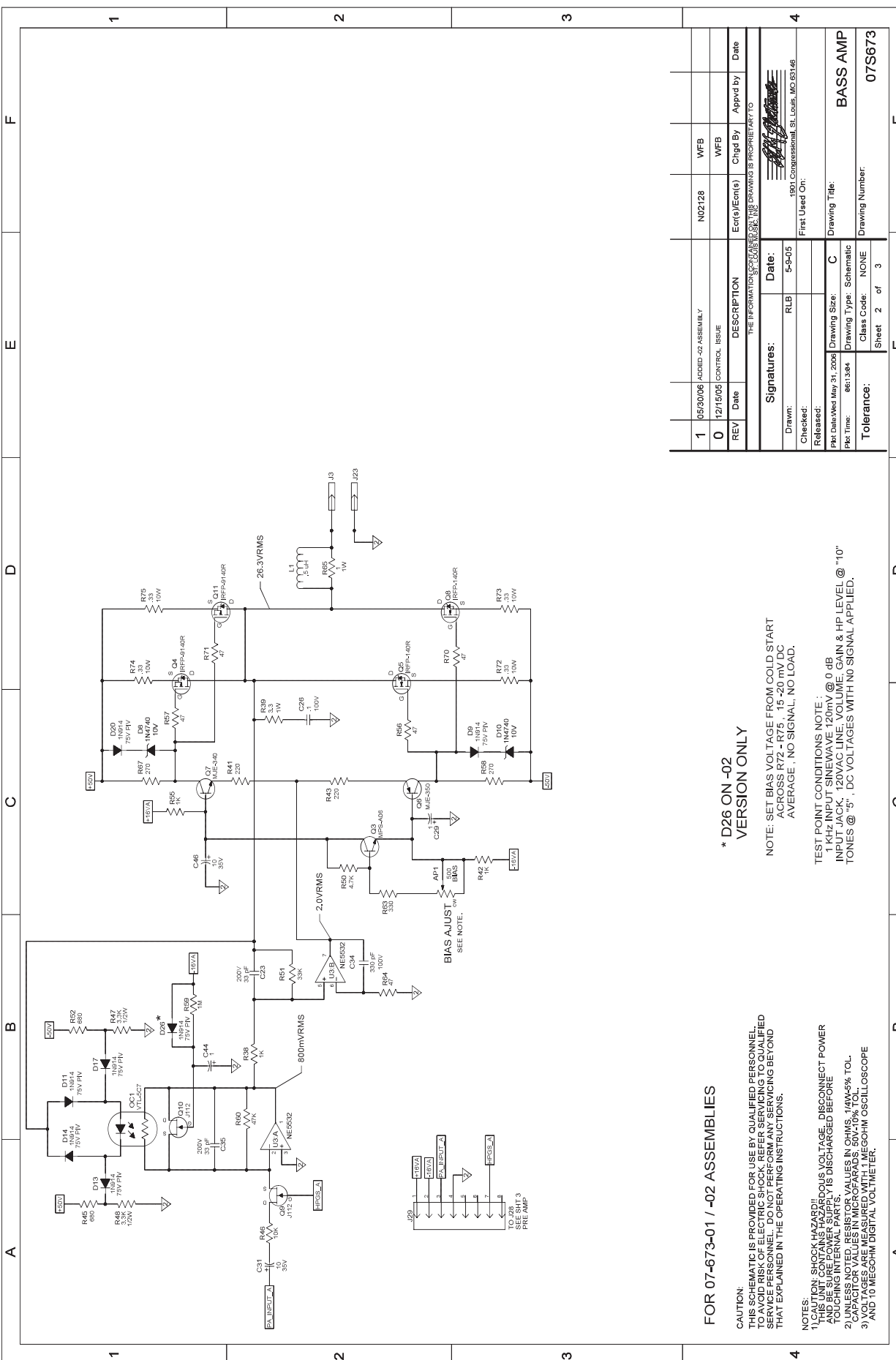
THE INFORMATION CONTAINED IN THIS DRAWING IS PROPRIETARY TO  
**Signature:** \_\_\_\_\_  
**Date:** 5-9-05  
**Drawn:** RLB  
**First Used On:** 1901 Compression, St. Louis, MO 63146  
**Released:** \_\_\_\_\_  
**Per Date:** Wed May 31, 2006  
**Per Time:** 06:13:34  
**Tolerance:** NONE  
**Drawing Title:** BASS AMP  
**Drawing Type:** Schematic  
**Drawing Number:** 07S673  
 Sheet 1 of 3



**B-200R**

©2007 LOUD Technologies Inc. All rights reserved

Bass Amplifier PCB Schematics



FOR 07-673-01 / -02 ASSEMBLIES

CAUTION: THIS SCHEMATIC IS PROVIDED FOR USE BY QUALIFIED PERSONNEL. IT IS NOT TO BE USED FOR REPAIR OR REWORK. THE USER IS RESPONSIBLE FOR OBTAINING THE NECESSARY TRAINING AND EQUIPMENT TO PERFORM ANY REPAIR OR REWORK. THE USER IS RESPONSIBLE FOR OBTAINING THE NECESSARY TRAINING AND EQUIPMENT TO PERFORM ANY REPAIR OR REWORK.

1) CAUTION: SHOCK HAZARD!! THIS UNIT CONTAINS HAZARDOUS VOLTAGE. DISCONNECT POWER TO THE UNIT BEFORE ANY REPAIR OR REWORK. THE USER IS RESPONSIBLE FOR OBTAINING THE NECESSARY TRAINING AND EQUIPMENT TO PERFORM ANY REPAIR OR REWORK.

2) UNLESS NOTED, RESISTOR VALUES IN OHMS, 1/4W-5% TOL. CAPACITOR VALUES IN MICROFARADS. 50V, 10% TOL. UNLESS NOTED, ALL PARTS ARE TO BE OBTAINED FROM THE SUPPLIER'S STOCK.

3) AND TO MEGOHM DIGITAL VOLTMETER.

BIAS ADJUST - SEE NOTE. 1.0V

\* D26 ON -02 VERSION ONLY

NOTE: SET BIAS VOLTAGE FROM COLD START ACROSS R72 - R75. 15-20 mV DC AVERAGE, NO SIGNAL, NO LOAD.

TEST POINT CONDITIONS NOTE: 1) 1/4" x 1/4" INPUT SIGNALS: 120mV @ 0.4B INPUT JACK. 120VAC LINE VOLUME. GAIN & HP LEVEL @ "10" TONES @ "5". DC VOLTAGES WITH NO SIGNAL APPLIED.

1

2

3

4

REV | Date | DESCRIPTION | Etc(s)/Etc(s) | Chgd By | Appvd by | Date

1 | 05/30/06 | ASSEMBLY | N02128 | WFB | | |

0 | 12/15/05 | CONTROL ISSUE | WFB | | | |

THE INFORMATION CONTAINED HEREIN IS PROPRIETARY TO

Signature: \_\_\_\_\_ Date: \_\_\_\_\_

Drawn: RLB Date: 5-9-05

Checked: \_\_\_\_\_ First Used On: 1904 Commercial St. Lewis, MO 65146

Released: \_\_\_\_\_

Plt Date: Wed May 31, 2006 Drawing Size: C

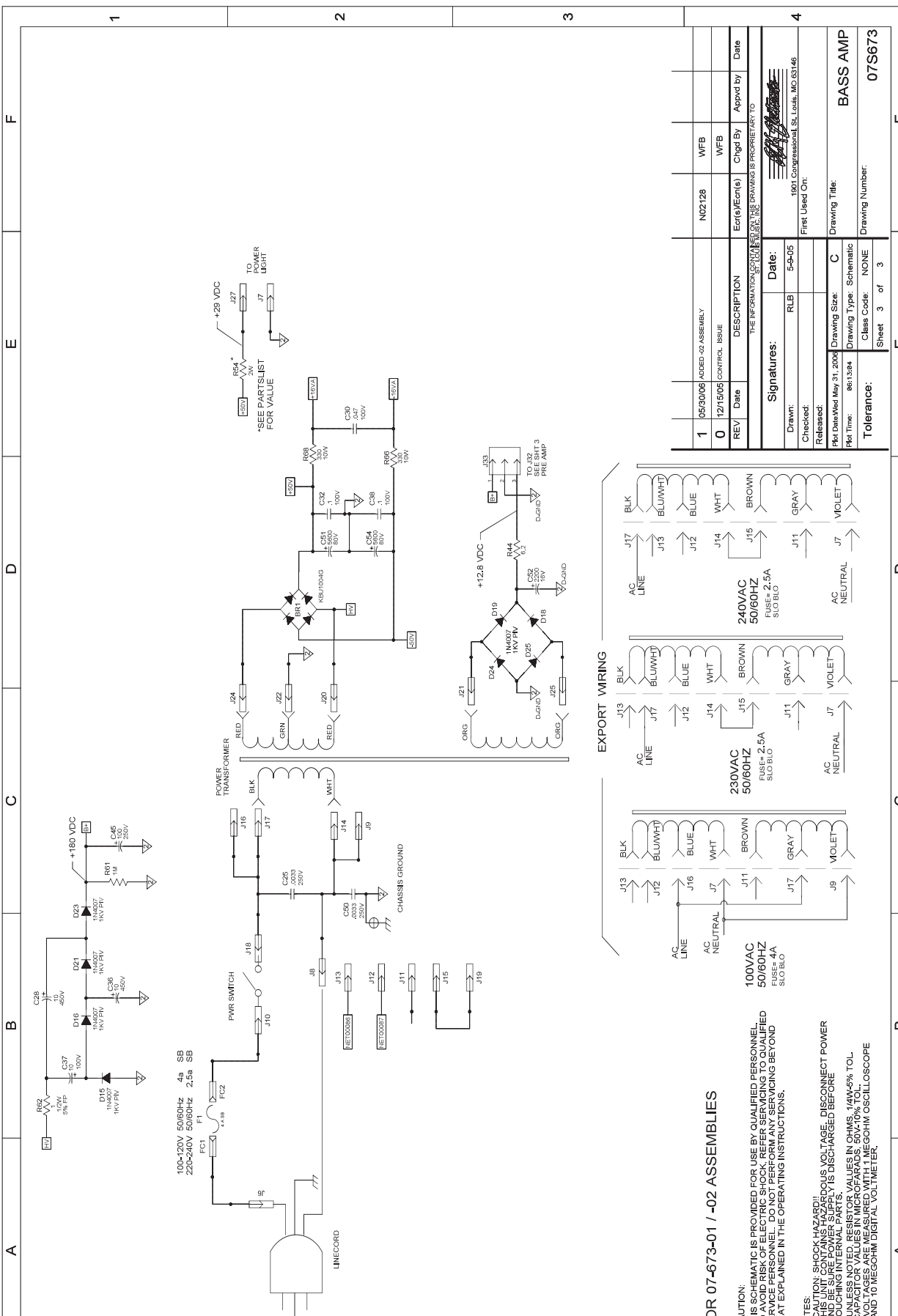
Plt Time: 06:13:04 Drawing Type: Schematic

Tolerance: Class Code: NONE

Sheet 2 of 3

07S673

BASS AMP



FOR 07-673-01 / -02 ASSEMBLIES

CAUTION: THIS SCHEMATIC IS PROVIDED FOR USE BY QUALIFIED PERSONNEL. UNLESS OTHERWISE SPECIFIED, ALL PARTS ARE TO BE QUALIFIED PER THE REQUIREMENTS OF THE OPERATING INSTRUCTIONS.

- 1) CAUTION: SHOCK HAZARD!! THIS UNIT CONTAINS HAZARDOUS VOLTAGE. DISCONNECT POWER BEFORE WORKING ON THE UNIT. ELECTRIC SHOCK IS POSSIBLE EVEN AFTER DISCONNECTING FROM THE MAIN POWER SUPPLY. TOUCHING INTERNAL PARTS MAY BE DANGEROUS.
- 2) UNLESS NOTED, RESISTOR VALUES IN OHMS, 1/4W-5% TOL.
- 3) CAPACITOR VALUES IN MICROFARADS. 50V-10% TOL.
- 4) AND 10 MEGOHM DIGITAL VOLTMETER.

1	05/30/06	ADDED -02 ASSEMBLY	NO2128	WFB		
0	12/15/05	CONTROL ISSUE		WFB		
REV	Date	DESCRIPTION	Entered by	Chgd By	Appvd by	Date
THE INFORMATION CONTAINED IN THIS DRAWING IS PROPRIETARY TO						
SIGNATURES:						
Drawn:	RLB	Date:	5-9-05			
Checked:		First Used On:	1801 Compressional, St. Louis, MO 63146			
Released:						
Pki Date:	Wed May 31, 2006	Drawing Size:	C			
Pki Time:	06:13:04	Drawing Type:	Schematic			
Tolerance:		Class Code:	NONE			
		Sheet	3 of 3			
		Drawing Number:	07S673			
		Drawing Title:	BASS AMP			