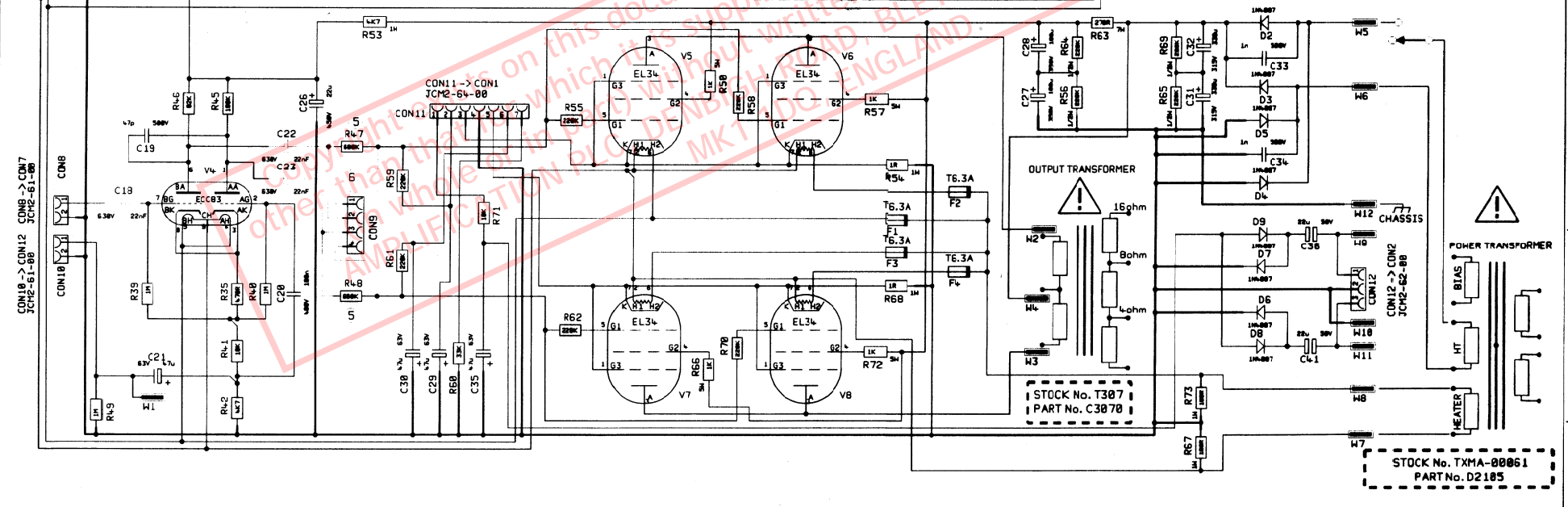
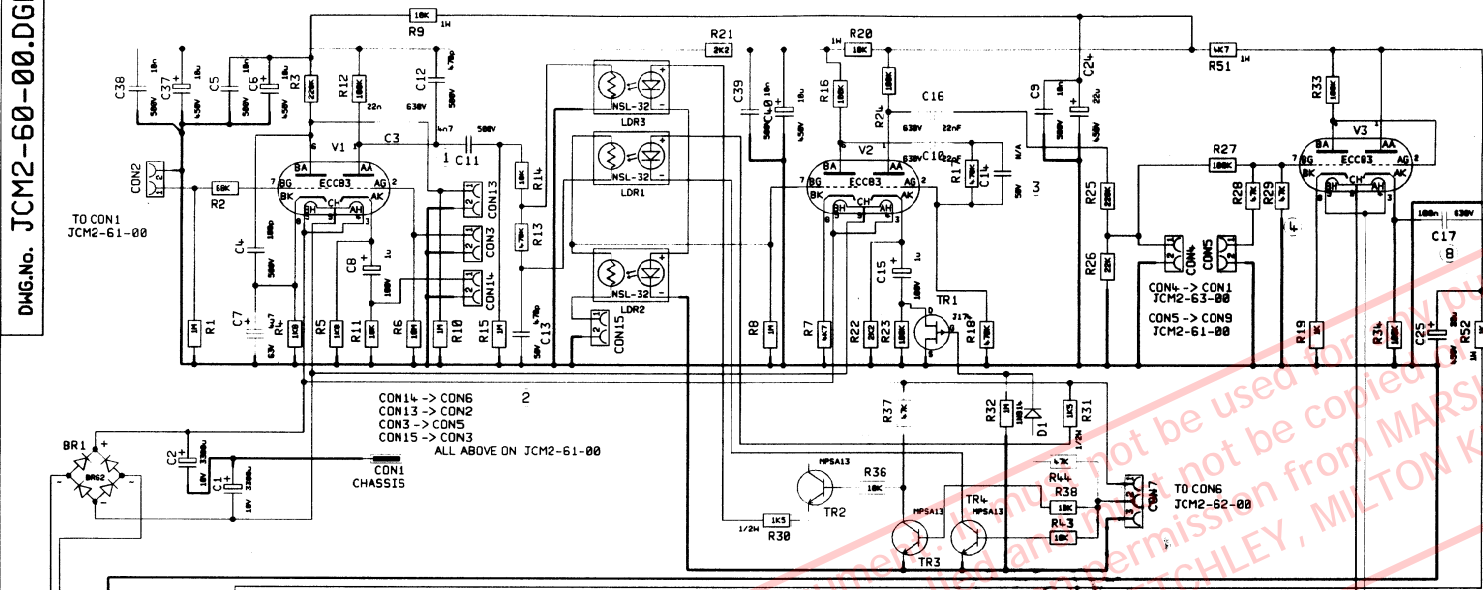


Dwg. No. JCM2-60-00.DGM

SAFETY CRITICAL COMPONENT
 REPLACE ONLY WITH SAME
 TYPE AND RATING.

- NOTES**
- (1) C11 = 4n7 500V ON STANDARD HEAD
 C11 = 1nF 500V ON COMBO & DELUXE
 - (2) C13 = 470pF STANDARD --- 100pF COMBO & DELUXE
 - (3) C14 NOT FITTED ON STANDARD HEAD,
 COMBO OR DELUXE
 - (4) R29 = 47K STANDARD
 R29 = 22K COMBO & DELUXE
 - (5) R4,7,48 = LINK STANDARD
 R4,7,48 = 680K COMBO & DELUXE
 - (6) CON9 ONLY FITTED ON COMBO & DELUXE
 - (7) C17 = LINK STANDARD
 C17 = 100nF 630V COMBO & DELUXE

STOCK No. S167
PART No. 131085NN



STOCK No. TXMA-00061
PART No. D2105

1		PRODUCTION	30/4/97	A	E	J	N	MATERIAL		DIMENSIONS IN		TITLE	
2		PRE-PRODUCTION	19/3/97	B	F	K	P	MATERIAL SPECIFICATIONS		TOLERANCES UNLESS OTHERWISE STATED		JCM2000	
3		ECO NUMBER	DATE	C	G	L	Q	DRAWN S.G		DATE 19/3/97		SUPERLEAD STANDARD	
4				D	H	M	R	CHECKED		DATE 23-6-97		Dwg. No. JCM2-60-00.DGM	
5								APPROVED				1	



ALL OTHER HOLES = X = (THROUGH PLATED)