

December 5, 1974

CHANGE FOR THE BETTER

In order to maintain our high quality standards, the following changes in all of our solid state power supplies is being initiated.

I. Diode Replacement

We are replacing the diodes in our bridge rectifier circuit Part No. 031450 which is a 3 amp diode with a 6 amp diode Part No. 137077. The new diode will be a Sarkes Tarzian, their Part No. 6AL2 or Motorola Part No. MR752.

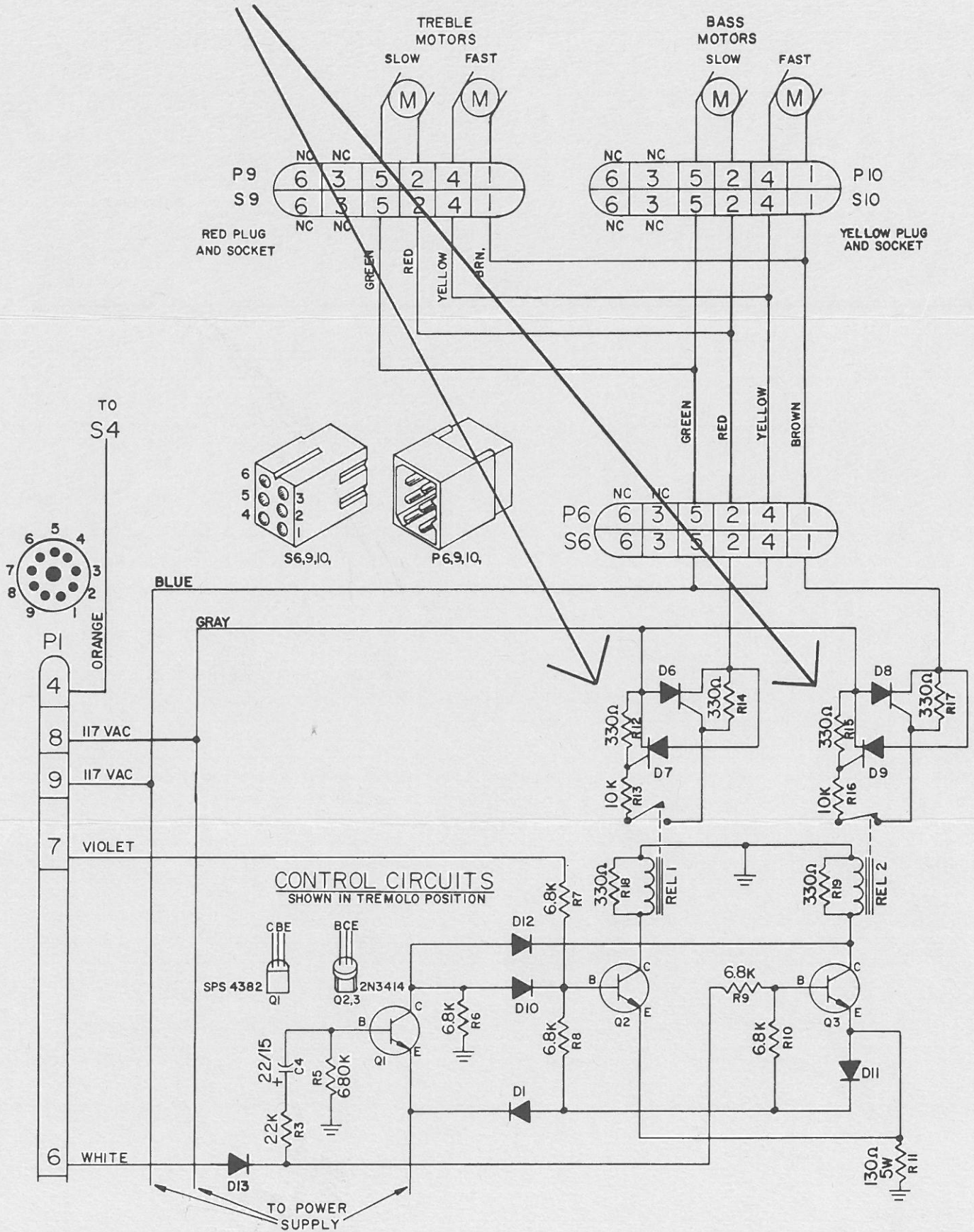
If you have a diode problem, we would like to suggest that all the diodes with the Part No. 031450 in the power supply be replaced to eliminate any further cause for repair. These diodes are available from us under Part No. 137077.

II. Rectifier S.C.R.

We are also changing our motor switching circuits from S.C.R.'s, our Part Nos. 030387 (200 piv 4 amp) and 031997 (400 piv 4 amp) to Triacs, thus allowing one Triac to replace two S.C.R.'s. Our part number for these new parts is 067561. They are rated at 400 piv 8 amps. Suggested equivalents are: Motorola Hep-R1725; G.E. SC146D. To illustrate the S.C.R. to Triac change, refer to the two schematics that follow.

If you have any questions pertaining to this service letter, please feel free to contact our Customer Service Department.

PRIOR MOTOR CONTROL AND BRAKE CIRCUIT INCORPORATING THE USE OF S.C.R.'s.



NEW MOTOR CONTROL AND BRAKE CIRCUIT INCORPORATING THE USE OF TRIACS

