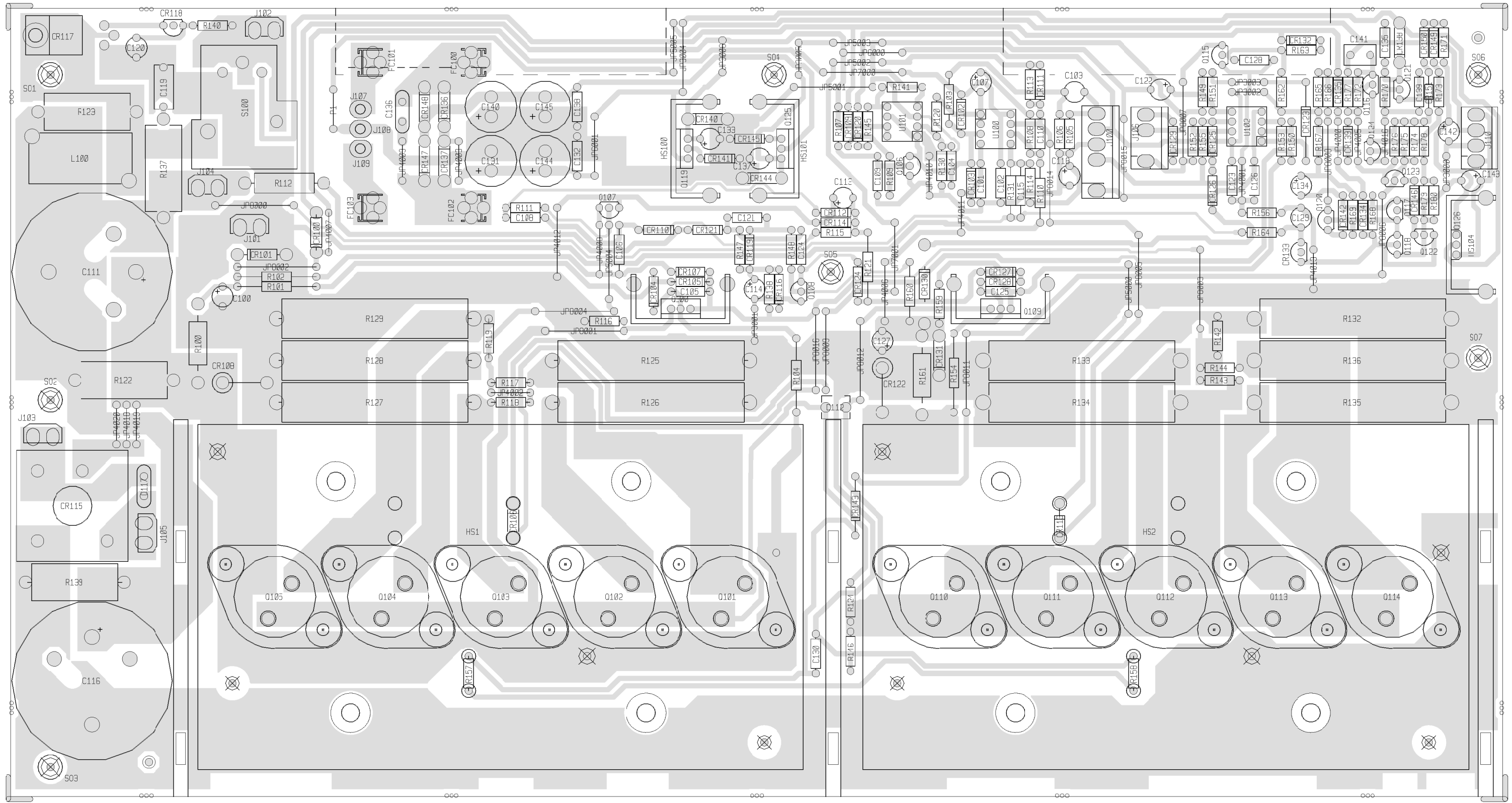


025 C FANSPD=10.58VDC, FAN ON LOW SPEED
 060 C FANSPD=18.69VDC, FAN ON MEDIUM SPEED
 095 C FANSPD=26.80VDC, THERMAL SHUTDOWN/HIGH SPEED

 025 C VTEMP=2.2VDC, FAN ON LOW SPEED
 060 C VTEMP=2.6VDC, FAN ON MEDIUM SPEED
 095 C VTEMP=3.0VDC, THERMAL SHUTDOWN/HIGH SPEED

"COMPANY PROPRIETARY INFORMATION"
 PEAVEY ELECTRONICS CORP.
 711 A STREET
 Meridian, Mississippi 39301
 TITLE FIREBASS POWER AMPLIFIER
 P9600010
 SIZE CODE NUMBER REV
 D JRA CB#: 98830470 B
 PRINT ASSY#: 99030471
 DATE 16-AUG-2001 SHEET 1 OF 1



FIREBASS POWER AMP

B I L L O F M A T E R I A L S R E P O R T

BOARD NAME: FIREBASS PWR REPORT DATE: 17AUG01
 ASSEMBLY LEVEL NUMBER: 99030471 DESIGNER: RAY GAULDIN / JAMES HUGHES
 PROJECT NUMBER: P9600010
 CBDS

PART	PART	DESCRIPTION AND	
** QTY. NAME	VALUE	NUMBER	DEVICE DESIGNATIONS *****

1	98830470	98830470	98830470 PCB
3	.015	.015	70340010 .015MF----10%----50VDC----T/C----T&R C108, C121, C139
2	.01CD	.01CD	70320248 .01MF----20%---1000VDC---CD--T&A C117, C136
12	.1	.1	70340100 .1MF----+80-20%--50VDC----AXL----T&R C101, C102, C106, C109, C123, C124, C126, C128, C130, C132, C135, C138
1	.1R250MY	.1R250MY	70320096 .1 MFD 250VDC MYLAR CA/BR

C119

1 .22M .22M 70330128 .22M 5% 50vdc my T&A

C141

1 .22SF2 .22SF2 70330114 0.22 MF 5% 100V STCK FILM t&a

C112

10 .33W10 .33W10 70250011 .33--10W--10%--WW--AXL

R125, R126, R127, R128, R129, R132,
R133, R134, R135, R136

1 .8UH .8UH 70519917 .8UH AIR CORE COIL / CS1200

L100

1 1.1KP1 1.1KP1 70240138 1.1K-1/4W-1%-MF-T&R

R180

2 1.21KP1 1.21KP1 70240046 1.21K-1/4W--1%----MF--T&R

R108, R114

3	1.5K	1.5K	70240018	1.5K--1/4W--5%----CF--T&R
				R101, R152, R159
4	100	100	70240010	100---1/4W--5%----CF--T&R
				R111, R130, R148, R169
4	1000R35	1000R35	70320186	1000MF----20%----35VDC--EL--T&A
				C131, C140, C144, C145
2	100FP	100FP	70240096	100FP-1/4W--5%----FP--T&R
				R116, R146
4	100K	100K	70240034	100K--1/4W--5%----CF--T&R
				R102, R140, R160, R167
2	100PF	100PF	70340054	100PF-----10%----50VDC----T/C----T&R
				C105, C125
4	10K	10K	70240025	10K---1/4W--5%----CF--T&R
				R120, R141, R145, R179
2	10KMF100	10KMF100	70320257	10000mf-20% 100vdc-el-rad

C111, C116

1 10PF 10PF 70340050 10PF-----5%-----T/C----T&R

C115

2 10R50L 10R50L 70320185 10MF-----20%-----50VDC---LL--T&A

C122, C134

1 12.1KP1 12.1KP1 70241052 12.1K-1/4W--1%----MF--T&R

R176

1 13080 13080 70413080 LM3080N CUSTOM SELECTED

U101

1 13886 13886 70413886 SZ-13886-2 DUAL DIODE

CR113

1 14.3KP1 14.3KP1 70241009 14.3K-1/4W--1%----MF--T&R

R175

1 15032VHS 15032VHS 70415032 MJE-15032 NPN HI-VLTG TO-220 DRIVER
W/70900629H

Q100

1 15033VHS 15033VHS 70415033 MJE-15033 PNP HI-VLTG TO-220 DRIVER
W/70900629HS

Q109

1 169KP1 169KP1 70241079 169K-1/4W--1%----MF--T&R

R172

1 180 180 70240012 180---1/4W--5%----CF--T&R

R124

9 1K 1K 70240017 1K----1/4W--5%----CF--T&R

R117, R118, R119, R142, R143, R144,
R150, R153, R166

3 1M 1M 70240039 1M----1/4W--5%----CF--T&R

R107, R162, R174

10 1N4003 1N4003 70464003 1N4003 200V SILICON DIODE

CR100, CR106, CR130, CR136, CR137,
CR138, CR140, CR144, CR147, CR148

27	1N4148	4148	70464148	1N4148 75V 10MA SILICON DIODE
				CR102, CR103, CR105, CR107, CR109, CR111, CR112, CR114, CR116, CR119, CR120, CR123, CR124, CR125, CR126, CR127, CR129, CR132, CR134, CR135, CR139, CR141, CR143, CR145, CR146, CR149, CR150
2	1N4744	4744	70440102	SZG40102 15V 5% ZENER DIODE
				CR101, CR131
1	1N751A	1N751A	70400751	1N751A 5.1V, .4W, 5% ZENER DIODE
				CR151
1	1N757A	1N757A	70415239	1N5239C 9.1V .4W 2% ZENER
				CR142
4	1SS142	1SS142	70400142	1ss142 250v SILICON DIODE
				CR104, CR110, CR121, CR128
3	2.2R50NP	2.2R50NP	70320184	2.2MF-----20%-----50VDC---NP--T&A
				C103, C120, C129

3	2.7K	2.7K	70240021	2.7K--1/4W--5%----CF--T&R
				R149, R151, R165
2	2.7KW1	2.7KW1	70210016	2.7K--1W----5%----MO--T&R
				R100, R161
1	2.8KP1	2.8KP1	70241007	2.8K--1/4W--1%----MF--T&R
				R177
1	21KP1	21KP1	70240120	21K 1% 1/4W MF T&R
				R173
2	22K	22K	70240029	22K--1/4W--5%----CF--T&R
				R106, R155
10	22R50	22R50	70320181	22MF-----20%----50VDC---EL--T&A
				C100, C107, C113, C114, C118, C127, C133, C137, C142, C143
1	2504W	2504W	70402504	BR. RECT, 400V, 25A, WIRE LEADS

CR115

1 270 270 70240013 270---1/4W--5%-----CF--T&R

R171

2 2KJ102J 2KJ102J 70240215 1K TEMPSISTOR (2KJ102J)

R157, R158

5 2N3919 3919 70463919 SKA-3919 TO92 NPN TRANS T&A

Q118, Q120, Q122, Q123, Q124

2 2N5400 5400 70460761 761/2N5400 120V 10MA T0-92 PNP T&A

Q117, Q121

1 33 33 70240004 33----1/4W--5%-----CF--T&R

R113

3 33K 33K 70240030 33K---1/4W--5%-----CF--T&R

R103, R109, R163

2 39PF 39PF 70340052 39PF-----50VDC----T/C----T&R

C104, C110

1 4.7 4.7 70240002 4.7---1/4W--5%-----CF--T&R

R156

2 4.7FP 4.7FP 70240094 4.7FP-1/4W--10%----FP--T&R

R104, R154

2 4.7K 4.7K 70240023 4.7K--1/4W--5%-----CF--T&R

R121, R138

2 4560 4560 70414560 4560 DUAL OP AMP IC

U100, U102

2 470 470 70240015 470---1/4W--5%-----CF--T&R

R115, R147

5 47K 47K 70240031 47K---1/4W--5%-----CF--T&R

R105, R110, R131, R168, R170

2	4KW5	4KW5	70250050	4K--5W--10%--WW--AXL
				R122, R139
2	5.6W5	5.6W5	70250026	5.6--5W--10%--WW--AXL
				R123, R137
8	500STW	70901859	70901859	SPCR, R, TA-40X1/2, SW, AL, ST
				SO1, SO2, SO3, SO4, SO5, SO6, SO7, SO8
1	5331V	5331V	70425331	SJE-5331 CASE-77 NPN VERTICAL
				Q126
1	6.8KW2	6.8KW2	70250052	6.8K---2W---5%---MF---T&R
				R112
1	6531	6531	70466531	MPS-6531 TO92 NPN TRANS. T&A
				Q107
1	6533	6534	70466533	MPS-6533/34 TO-92 PNP TRANS T&A
				Q116

1	6534	6534	70466533	MPS-6533/34 TO-92 PNP TRANS T&A
				Q108
5	73180A	73180	70473180	SJ-73180, 3 AMP, 100V, METRIC TO-3, PNP
TRANS				Q110, Q111, Q112, Q113, Q114
1	7815VERT	7815VERT	70400340	7815 15V 1A POS TO-220 RG VERT MNT
				Q119
1	7915VERT	7915VERT	70400320	7915 15V 1A NEG TO 220 RG VERT MNT
				Q125
1	8.25KP1	8.25KP1	70240113	8.25K 1% 1/4W MF T&R
				R178
1	82K	82K	70240033	82K---1/4W--5%----CF--T&R
				R164
5	83180A	83180	70483180	SJ-83180, NPN, 3 AMP, 100V, METRIC TO-3
TRANS				

Q101, Q102, Q103, Q104, Q105

4 CLP1183 CLP1183 70901183 FUSECLIP, PC MT - T&A

FC100, FC101, FC102, FC103

2 FMPU 73711811 73711811 M118-171 C.B. FEMALE MOLEX PIN

J107, J109

2 HS0233A 98000233 98000233 CS800SW HS PLATE

HS1, HS2

5 HS0629 70900629 70900629 AAVID VERTICAL TO-220 HEATSINK

HS100, HS101, HS102, HS103, HS104

2 J174 J174 70460174 J-174 30V TO-92 P-CHAN FET T&A

Q106, Q115

1 MMPU 73711812 73711812 R93-12 PN C.B. MALE MOLEX PIN

J108

2 MR502CD MR502CD 70400502 MR502/1N5402 200V, 3A SILICON DIODE -
CATH DOWN

CR108, CR122

1 REL2250 REL2250 71322250 15V 30A OUTPUT RELAY-SEAL

S100

1 SAC187 SAC187 70400187 SAC187 200V TO220 TRIAC

CR117

2 SBS14 SBS14 70460014 SBS14 8V T0-92 BI-DIRECTIOAL SWITCH T&A

CR118, CR133

5 SPDU 73716194 73716194 .250 PC MNT SPADE .093 PCB

J101, J102, J103, J104, J105

1 SPX4K2U SPX4K2U XXXXXXXX 3 EACH OF STAKE PINS

J106

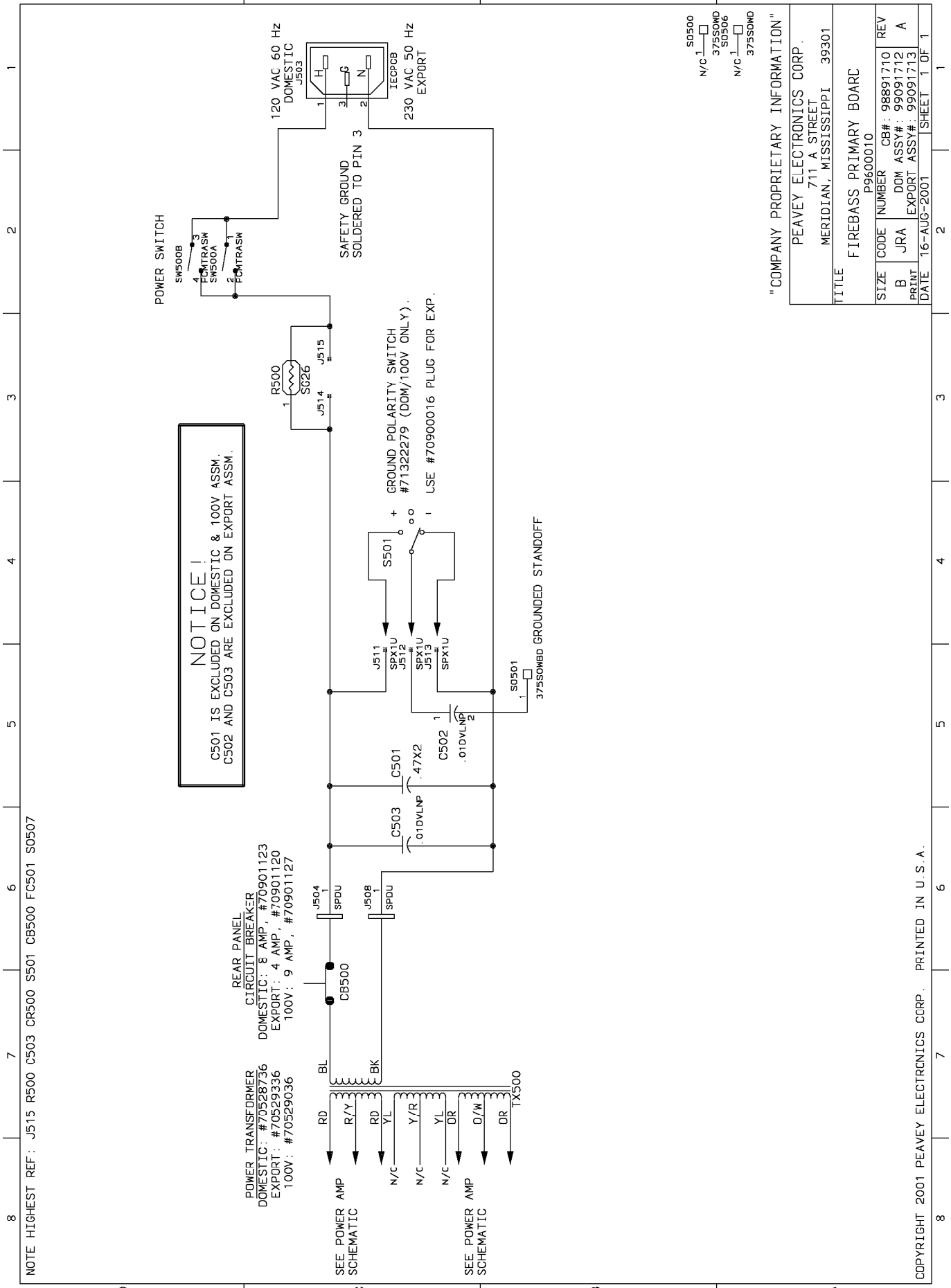
1 SPX4U SPX4U XXXXXXXX 4 EACH OF STAKE PINS

J110

1 SPX6K2U SPX6K2U XXXXXXXX 5 EACH OF STAKED PINS

J100

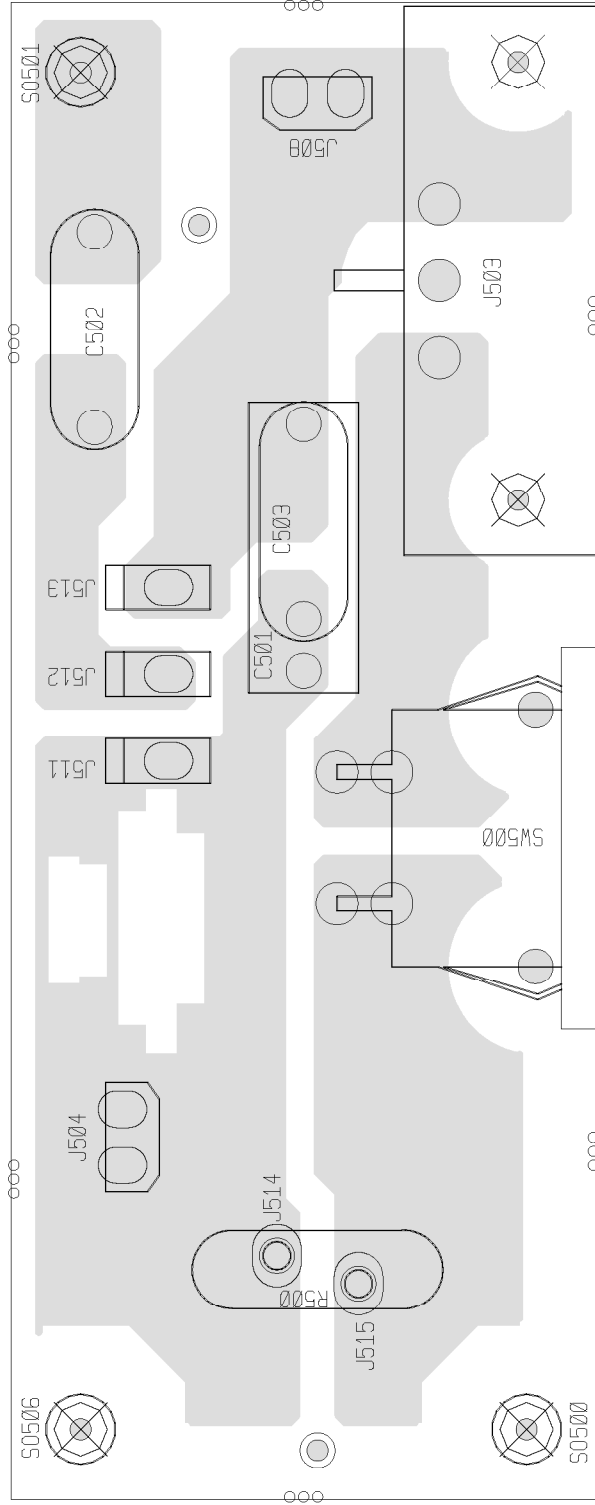
* END OF BILL OF MATERIALS REPORT *



NOTICE!
C501 IS EXCLUDED ON DOMESTIC & 100V ASSM.
C502 AND C503 ARE EXCLUDED ON EXPORT ASSM.

"COMPANY PROPRIETARY INFORMATION"

PEAVEY ELECTRONICS CORP. 711 A STREET MERIDIAN, MISSISSIPPI 39301			
TITLE FIREBASS PRIMARY BOARD P9600010			
SIZE	CODE	NUMBER	REV
B	JRA	DOM ASSY# : 99091712	A
PRINT	EXPORT ASSY# : 99091713		
DATE	16-AUG-2001		SHEET 1 OF 1



FIREBASS PRIMARY

EXPORT- INSERT C501 INSTEAD OF C503 AND
DO NOT INSERT C502, J511, J512 AND J513

DOM- INSERT C503 INSTEAD OF C501

B I L L O F M A T E R I A L S R E P O R T

BOARD NAME: PRIMARY/TRIAC REPORT DATE: 20AUG01
 ASSEMBLY LEVEL NUMBER: 99091712 DESIGNER: KEITH VARNER
 PROJECT NUMBER: P9600010
 CBDS

PART	PART	DESCRIPTION AND	
** QTY. NAME	VALUE	NUMBER	DEVICE DESIGNATIONS *****

1	98891710	98891710	ECN18656 PCB
2	.01DVLNP	.01DVLNP	70320104 .01 MFD 125VDC DVL MYLAR +0-20%
			C502, C503
1	.47X2	.47X2	70320271 .47MF-20%-275VAC-MP-R/W
			C501
1	375SOWBD	70900779	70900779 SPACER, 3/8,R(#4),.187 SWAGE BRASS
			SO501
2	375SOWD	70900295	70900295 SPACER, 3/8,R(#4),.187 SWAGE ALUM.

SO500, SO506

2 FMPU 73711811 73711811 M118-171 C.B. FEMALE MOLEX PIN

J514, J515

1 IECPCB 70901257 70901257 IEC POWER INLET R/A PCB MT.

J503

1 PCMTRASW PCMTRASW 71322377 PC MOUNT PIGHT ANGLE POWER SWITCH

SW500

1 SG26 70240210 70240210 5 OHM, 12 A INRUSH THERMISTOR

R500

2 SPDU 73716194 73716194 .250 PC MNT SPADE .093 PCB

J504, J508

3 SPX1U SPX1U 73717003 1 STAKE PIN

J511, J512, J513

* END OF BILL OF MATERIALS REPORT *