

# Transstube Preamp

## Notes

Do NOT insert CR18 & R92 for: Bandit II/Studio Pro II

Use Ribbon-Cable P/N 70600018 for:

BanditII/StudioII

Use Ribbon-Cable P/N 70600097 for:

EnvoyII



BILL OF MATERIALS REPORT

BOARD NAME: TRANSTUBE PREAMP REPORT DATE: 2APR01  
 ASSEMBLY LEVEL NUMBER: 99091990/91  
 PROJECT NUMBER: P9800152

CBDS

PART PART DESCRIPTION AND  
 \*\* QTY. NAME VALUE NUMBER DEVICE DESIGNATIONS \*\*\*\*\*  
 \*\*\*\*\*

1	72100710	72100710	ECN00198	PCB
2	.001	.001	70340000	.001MF----10%----50VDC----MON----T&R C20, C27
1	.0015M	.0015M	70330120	.0015M 5% 50vdc my T&A C23
1	.0033	.0033	70340006	.0033MF---10%---50VDC---T/C---T&R C1
1	.0039M	.0039M	70330153	.0039MF-5%-50VDC-MY-T&A C4
1	.0068	.0068	70340008	.0068MF---10%---50VDC---MON---T&R C33
1	.0068M	.0068M	70330117	.0068mf--5%--50vdc---my---t&a C10
1	.01	.01	70340011	.01MF-----10%----50VDC---T/C---T&R C67
1	.012	.012	70340009	.012MF---10%---50VDC---T/C---T&R C16
2	.015	.015	70340010	.015MF---10%---50VDC---T/C---T&R C32, C50
4	.022	.022	70340012	.022MF---10%---50VDC---MON---T&R C12, C15, C36, C44
4	.047	.047	70340017	.047MF---10%---50VDC---MON---T&R C19, C24, C25, C55
2	.047M	.047M	70330136	.047M 5% 50vdc my T&A C5, C8
7	.1	.1	70340100	.1MF----+80-20%--50VDC---AXL---T&R C2, C18, C22, C60, C61, C62, C63
5	.1P10	.1P10	70340101	.1MF-----10%----50VDC---MON---T&R C14, C26, C38, C39, C42
2	.1SF	.1SF	70330113	0.10 MFD 10% 100V STCK FILM T&A

C7, C17

2 .22SF2 .22SF2 70330114 0.22 MF 5% 100V STCK FILM t&a

C3, C29

1 .47SF63 .47SF63 70330159 .047 MF 63V STACK FILM T&A

C54

1 1.3K 1.3K 70240061 1.3K--1/4W--5%---CF--T&R

R63

7 1.5K 1.5K 70240018 1.5K--1/4W--5%---CF--T&R

R21, R45, R49, R51, R80, R90, R92

1 100 100 70240010 100---1/4W--5%---CF--T&R

R83

8 100K 100K 70240034 100K--1/4W--5%---CF--T&R

R6, R14, R16, R46, R47, R48, R71, R77

1 100KARA 71190906 71190906 100K--15A--12MM--R/A D-SHAFT

VR1

4 100PF 100PF 70340054 100PF-----10%---50VDC---T/C---T&R

C48, C51, C52, C66

1 105KP1 105KP1 70241076 105K-1/4W--1%---MF--T&R

R5

4 10K 10K 70240025 10K---1/4W--5%---CF--T&R

R44, R64, R65, R96

1 10KBRA 71190900 71190900 10KB--12MM--R/A D-SHAFT

VR10

1 12K 12K 70240057 12K---1/4W--5%---CF--T&R

R86

1 133KP1 133KP1 70240133 133K 1% 1/4W MF T&R

R1

2 150KP1 150KP1 70241035 150K--1/4W--1%---MF--T&R

R26, R29

10 1740 1740 70401740 2SC1740SLN 40V.,1A, NPN, LOW NOISE T&A

Q1, Q2, Q3, Q4, Q5, Q6, Q7, Q8, Q9, Q10

6 1K 1K 70240017 1K---1/4W--5%---CF--T&R

R52, R56, R68, R73, R87, R88

6 1M 1M 70240039 1M---1/4W--5%---CF--T&R

R22, R23, R36, R39, R40, R59

2 1M5ARA 71190910 71190910 1M--5A--12MM--R/A D-SHAFT  
VR2, VR6

14 1N4148 4148 70464148 1N4148 75V 10MA SILICON DIODE  
CR1, CR2, CR3, CR4, CR6, CR7, CR8, CR9,  
CR10, CR11, CR12, CR13, CR19, CR20

2 2.2K 2.2K 70240020 2.2K--1/4W--5%---CF--T&R  
R53, R58

3 2.2M 2.2M 70240040 2.2M--1/4W--5%---CF--T&R  
R4, R11, R27

2 2.2R50 2.2R50 70320180 2.2MF-----20%---50VDC---EL--T&A  
C49, C65

2 20KBRA 71190903 71190903 20KB--12MM--R/A D-SHAFT  
VR3, VR7

3 22 22 70240007 22---1/4W--5%---CF--T&R  
R75, R78, R95

2 220K 220K 70240036 220K--1/4W--5%---CF--T&R  
R41, R54

1 220R50 220R50 70320187 220MF-----20%---50VDC---EL--T&A  
C59

7 22K 22K 70240029 22K---1/4W--5%---CF--T&R  
R7, R15, R50, R66, R70, R72, R76

12 22R50 22R50 70320181 22MF-----20%---50VDC---EL--T&A  
C9, C13, C31, C35, C37, C41, C43, C53,  
C56, C57, C58, C64

2 243KP1 243KP1 70241037 243---1/4W--1%---MF--T&R  
R13, R32

1 25.5KP1 25.5KP1 70240121 25.5K 1% 1/4W MF T&R  
R9

1 250K5ARA 71190907 71190907 250K--5A--12MM--R/A D-SHAFT  
VR5

2 250KBRA 71190908 71190908 250KB--12MM--R/A D-SHAFT  
VR8, VR9

3 270PF 270PF 70340057 270PF-----10%---50VDC---T/C---T&R  
C6, C11, C21

1 27PF 27PF 70340066 27PF-----10%---50VDC---T/C---T&R  
C45

3 3.3K 3.3K 70240022 3.3K--1/4W--5%----CF--T&R  
R17, R60, R62

1 300KARA 71190912 71190912 300K--25A--CT--12MM--R/A D-SHAFT  
VR4

1 330K 330K 70240037 330K--1/4W--5%----CF--T&R  
R25

1 33K 33K 70240030 33K---1/4W--5%----CF--T&R  
R97

1 37.4KP1 37.4KP1 70240052 37.4K-1/4W--1%---MF--T&R  
R3

1 39K 39K 70240048 39K---1/4W--5%----CF--T&R  
R18

1 4.53KP1 4.53KP1 70240109 4.53K 1% 1/4W MF T&R  
R19

3 4.7K 4.7K 70240023 4.7K--1/4W--5%----CF--T&R  
R8, R79, R89

2 4560 4560 70414560 4560 DUAL OP AMP IC  
U2, U3

3 47 47 70240008 47----1/4W--5%----CF--T&R  
R24, R91, R93

7 470K 470K 70240038 470K--1/4W--5%----CF--T&R  
R10, R37, R38, R43, R55, R61, R94

3 470PF 470PF 70340058 470PF-----10%----50VDC----T/C----T&R  
C28, C30, C68

2 47K 47K 70240031 47K---1/4W--5%----CF--T&R  
R34, R35

2 4P2TLRA 4P2TLRA 71322395 4P2T RA LEVER ACTUATED SLIDE SWITCH  
S1, S3

1 4P3TLRA 4P3TLRA 71322396 4P3T RA LEVER ACTUATED SLIDE SWITCH  
S2

1 4SRHRAU 73717084 73717084 4 PIN RA SQ/P F/LK HD .100  
P7

2 6.8K 6.8K 70240024 6.8K--1/4W--5%----CF--T&R  
R81, R82

1 68 68 70240009 68----1/4W--5%----CF--T&R

R74

1 680 680 70240016 680---1/4W--5%---CF--T&R

R57

1 680K 680K 70240065 680K---1/4W--5%---CF--T&R

R2

4 68K 68K 70240032 68K---1/4W--5%---CF--T&R

R12, R20, R33, R69

1 68KP1 68KP1 70241070 68K---1/4W--1%---MF--T&R

R28

1 820PF 820PF 70340062 820PF-----10%---50VDC---T/C---T&R

C34

1 82K 82K 70240033 82K---1/4W--5%---CF--T&R

R30

1 933 933 70400933 2SA933ASLN 40V, .1A, PNP, LOW NOISE T&A

Q11

1 CAB0018 70600018 70600018 8C .156 - 5" JMPR W/FEED-TO CONN.

P6

1 DG211 DG211 70420211 DG211 CJ.I.C.

U1

3 J174 J174 70460174 J-174 30V TO-92 P-CHAN FET T&A

Q12, Q13, Q14

1 MAC97 MAC97 70460097 MAC97-6 400V .6A TO-92 TRIAC T&A

CR5

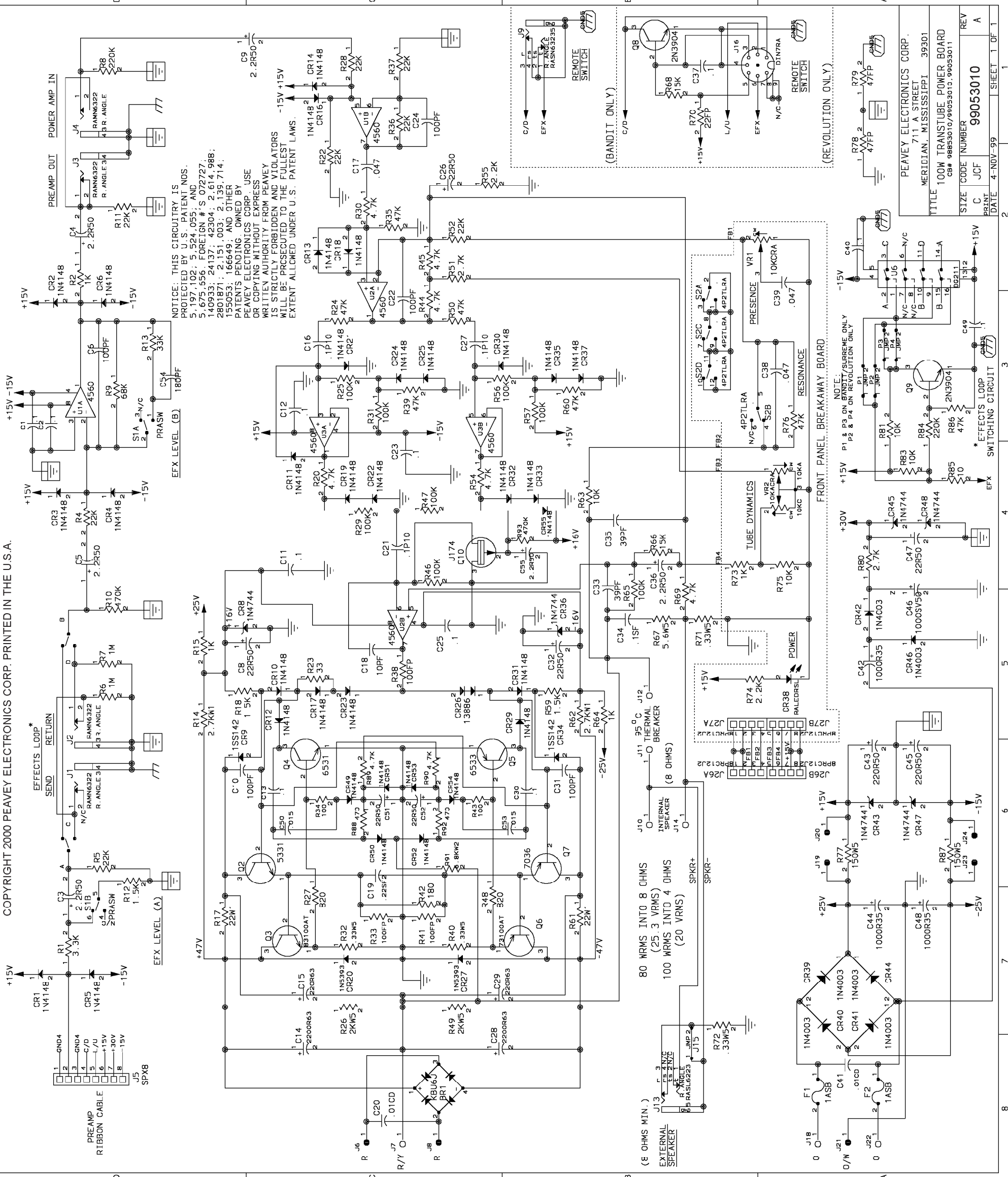
1 RALEDRSL RALEDRSL 70450053 LED, T-1, RED, W/STOPPER LEAD T&A

CR18

2 RAMN6322 71466322 71466322 JACK MONO R/A 1/4" 6.5MM NINS

J1, J2

\*\*\*\*\*  
\* END OF BILL OF MATERIALS REPORT \*  
\*\*\*\*\*



NOTICE: THIS CIRCUITRY IS PROTECTED BY U.S. PATENT NOS. 5,197,102; 5,524,055; AND 5,675,556. FOREIGN # S 072727; 140933; 24137; 42304; 2,614,988; 2801871; 2,151,003; 2,135,714; 150553; 166649; AND OTHER PATENTS PENDING. OWNED BY PEAVEY ELECTRONICS CORP. USE OR COPYING WITHOUT EXPRESS WRITTEN AUTHORITY FROM PEAVEY IS STRICTLY FORBIDDEN AND VIOLATORS WILL BE PROSECUTED TO THE FULLEST EXTENT ALLOWED UNDER U.S. PATENT LAWS.

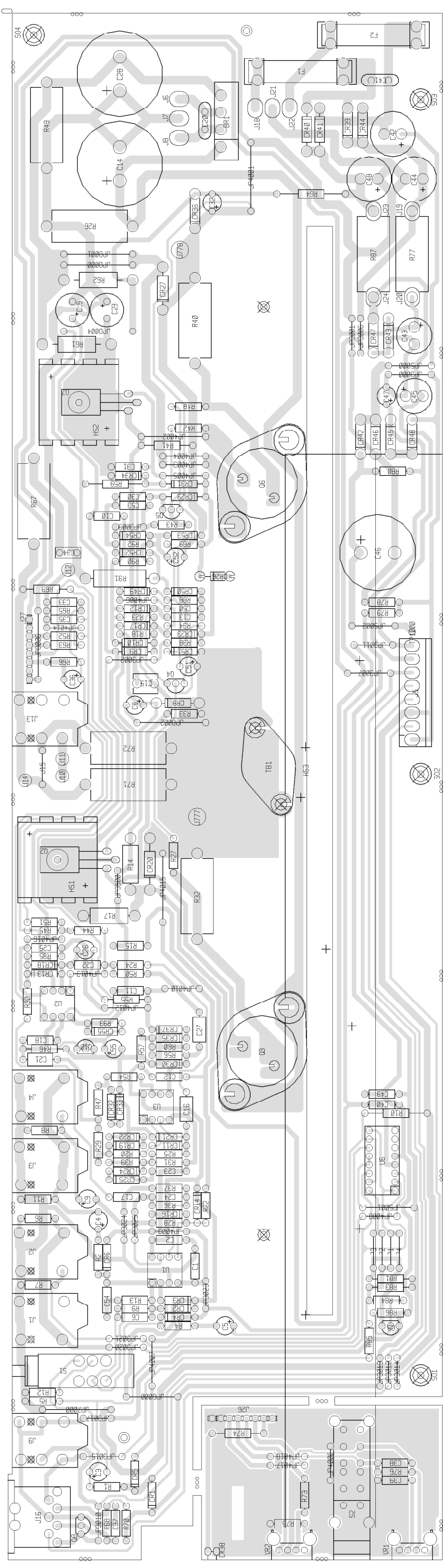
REV	A
PRINT	JCF
SIZE	C
CODE	99053010
NUMBER	
TITLE	100W TRANSUBE POWER BOARD
DATE	4-NOV-99
SHEET	1 OF 1

PEAVEY ELECTRONICS CORP.  
711 A STREET  
MERIDIAN, MISSISSIPPI 39301  
CBA 98653010/99053010; 99053011

NOTE: P1 & P3 ON BANDIT/SURREME ONLY  
P2 & P4 ON REVOLUTION ONLY

(8 OHMS MIN.)  
J13  
EXTERNAL SPEAKER  
R73  
R74  
R75  
R76  
R77  
R78  
R79  
R80  
R81  
R82  
R83  
R84  
R85  
R86  
R87  
R88  
R89  
R90  
R91  
R92  
R93  
R94  
R95  
R96  
R97  
R98  
R99  
R100  
R101  
R102  
R103  
R104  
R105  
R106  
R107  
R108  
R109  
R110  
R111  
R112  
R113  
R114  
R115  
R116  
R117  
R118  
R119  
R120  
R121  
R122  
R123  
R124  
R125  
R126  
R127  
R128  
R129  
R130  
R131  
R132  
R133  
R134  
R135  
R136  
R137  
R138  
R139  
R140  
R141  
R142  
R143  
R144  
R145  
R146  
R147  
R148  
R149  
R150  
R151  
R152  
R153  
R154  
R155  
R156  
R157  
R158  
R159  
R160  
R161  
R162  
R163  
R164  
R165  
R166  
R167  
R168  
R169  
R170  
R171  
R172  
R173  
R174  
R175  
R176  
R177  
R178  
R179  
R180  
R181  
R182  
R183  
R184  
R185  
R186  
R187  
R188  
R189  
R190  
R191  
R192  
R193  
R194  
R195  
R196  
R197  
R198  
R199  
R200  
R201  
R202  
R203  
R204  
R205  
R206  
R207  
R208  
R209  
R210  
R211  
R212  
R213  
R214  
R215  
R216  
R217  
R218  
R219  
R220  
R221  
R222  
R223  
R224  
R225  
R226  
R227  
R228  
R229  
R230  
R231  
R232  
R233  
R234  
R235  
R236  
R237  
R238  
R239  
R240  
R241  
R242  
R243  
R244  
R245  
R246  
R247  
R248  
R249  
R250  
R251  
R252  
R253  
R254  
R255  
R256  
R257  
R258  
R259  
R260  
R261  
R262  
R263  
R264  
R265  
R266  
R267  
R268  
R269  
R270  
R271  
R272  
R273  
R274  
R275  
R276  
R277  
R278  
R279  
R280  
R281  
R282  
R283  
R284  
R285  
R286  
R287  
R288  
R289  
R290  
R291  
R292  
R293  
R294  
R295  
R296  
R297  
R298  
R299  
R300  
R301  
R302  
R303  
R304  
R305  
R306  
R307  
R308  
R309  
R310  
R311  
R312  
R313  
R314  
R315  
R316  
R317  
R318  
R319  
R320  
R321  
R322  
R323  
R324  
R325  
R326  
R327  
R328  
R329  
R330  
R331  
R332  
R333  
R334  
R335  
R336  
R337  
R338  
R339  
R340  
R341  
R342  
R343  
R344  
R345  
R346  
R347  
R348  
R349  
R350  
R351  
R352  
R353  
R354  
R355  
R356  
R357  
R358  
R359  
R360  
R361  
R362  
R363  
R364  
R365  
R366  
R367  
R368  
R369  
R370  
R371  
R372  
R373  
R374  
R375  
R376  
R377  
R378  
R379  
R380  
R381  
R382  
R383  
R384  
R385  
R386  
R387  
R388  
R389  
R390  
R391  
R392  
R393  
R394  
R395  
R396  
R397  
R398  
R399  
R400  
R401  
R402  
R403  
R404  
R405  
R406  
R407  
R408  
R409  
R410  
R411  
R412  
R413  
R414  
R415  
R416  
R417  
R418  
R419  
R420  
R421  
R422  
R423  
R424  
R425  
R426  
R427  
R428  
R429  
R430  
R431  
R432  
R433  
R434  
R435  
R436  
R437  
R438  
R439  
R440  
R441  
R442  
R443  
R444  
R445  
R446  
R447  
R448  
R449  
R450  
R451  
R452  
R453  
R454  
R455  
R456  
R457  
R458  
R459  
R460  
R461  
R462  
R463  
R464  
R465  
R466  
R467  
R468  
R469  
R470  
R471  
R472  
R473  
R474  
R475  
R476  
R477  
R478  
R479  
R480  
R481  
R482  
R483  
R484  
R485  
R486  
R487  
R488  
R489  
R490  
R491  
R492  
R493  
R494  
R495  
R496  
R497  
R498  
R499  
R500  
R501  
R502  
R503  
R504  
R505  
R506  
R507  
R508  
R509  
R510  
R511  
R512  
R513  
R514  
R515  
R516  
R517  
R518  
R519  
R520  
R521  
R522  
R523  
R524  
R525  
R526  
R527  
R528  
R529  
R530  
R531  
R532  
R533  
R534  
R535  
R536  
R537  
R538  
R539  
R540  
R541  
R542  
R543  
R544  
R545  
R546  
R547  
R548  
R549  
R550  
R551  
R552  
R553  
R554  
R555  
R556  
R557  
R558  
R559  
R560  
R561  
R562  
R563  
R564  
R565  
R566  
R567  
R568  
R569  
R570  
R571  
R572  
R573  
R574  
R575  
R576  
R577  
R578  
R579  
R580  
R581  
R582  
R583  
R584  
R585  
R586  
R587  
R588  
R589  
R590  
R591  
R592  
R593  
R594  
R595  
R596  
R597  
R598  
R599  
R600  
R601  
R602  
R603  
R604  
R605  
R606  
R607  
R608  
R609  
R610  
R611  
R612  
R613  
R614  
R615  
R616  
R617  
R618  
R619  
R620  
R621  
R622  
R623  
R624  
R625  
R626  
R627  
R628  
R629  
R630  
R631  
R632  
R633  
R634  
R635  
R636  
R637  
R638  
R639  
R640  
R641  
R642  
R643  
R644  
R645  
R646  
R647  
R648  
R649  
R650  
R651  
R652  
R653  
R654  
R655  
R656  
R657  
R658  
R659  
R660  
R661  
R662  
R663  
R664  
R665  
R666  
R667  
R668  
R669  
R670  
R671  
R672  
R673  
R674  
R675  
R676  
R677  
R678  
R679  
R680  
R681  
R682  
R683  
R684  
R685  
R686  
R687  
R688  
R689  
R690  
R691  
R692  
R693  
R694  
R695  
R696  
R697  
R698  
R699  
R700  
R701  
R702  
R703  
R704  
R705  
R706  
R707  
R708  
R709  
R710  
R711  
R712  
R713  
R714  
R715  
R716  
R717  
R718  
R719  
R720  
R721  
R722  
R723  
R724  
R725  
R726  
R727  
R728  
R729  
R730  
R731  
R732  
R733  
R734  
R735  
R736  
R737  
R738  
R739  
R740  
R741  
R742  
R743  
R744  
R745  
R746  
R747  
R748  
R749  
R750  
R751  
R752  
R753  
R754  
R755  
R756  
R757  
R758  
R759  
R760  
R761  
R762  
R763  
R764  
R765  
R766  
R767  
R768  
R769  
R770  
R771  
R772  
R773  
R774  
R775  
R776  
R777  
R778  
R779  
R780  
R781  
R782  
R783  
R784  
R785  
R786  
R787  
R788  
R789  
R790  
R791  
R792  
R793  
R794  
R795  
R796  
R797  
R798  
R799  
R800  
R801  
R802  
R803  
R804  
R805  
R806  
R807  
R808  
R809  
R810  
R811  
R812  
R813  
R814  
R815  
R816  
R817  
R818  
R819  
R820  
R821  
R822  
R823  
R824  
R825  
R826  
R827  
R828  
R829  
R830  
R831  
R832  
R833  
R834  
R835  
R836  
R837  
R838  
R839  
R840  
R841  
R842  
R843  
R844  
R845  
R846  
R847  
R848  
R849  
R850  
R851  
R852  
R853  
R854  
R855  
R856  
R857  
R858  
R859  
R860  
R861  
R862  
R863  
R864  
R865  
R866  
R867  
R868  
R869  
R870  
R871  
R872  
R873  
R874  
R875  
R876  
R877  
R878  
R879  
R880  
R881  
R882  
R883  
R884  
R885  
R886  
R887  
R888  
R889  
R890  
R891  
R892  
R893  
R894  
R895  
R896  
R897  
R898  
R899  
R900  
R901  
R902  
R903  
R904  
R905  
R906  
R907  
R908  
R909  
R910  
R911  
R912  
R913  
R914  
R915  
R916  
R917  
R918  
R919  
R920  
R921  
R922  
R923  
R924  
R925  
R926  
R927  
R928  
R929  
R930  
R931  
R932  
R933  
R934  
R935  
R936  
R937  
R938  
R939  
R940  
R941  
R942  
R943  
R944  
R945  
R946  
R947  
R948  
R949  
R950  
R951  
R952  
R953  
R954  
R955  
R956  
R957  
R958  
R959  
R960  
R961  
R962  
R963  
R964  
R965  
R966  
R967  
R968  
R969  
R970  
R971  
R972  
R973  
R974  
R975  
R976  
R977  
R978  
R979  
R980  
R981  
R982  
R983  
R984  
R985  
R986  
R987  
R988  
R989  
R990  
R991  
R992  
R993  
R994  
R995  
R996  
R997  
R998  
R999  
R1000





TRANSTUBE 100W POWER AMP

BILL OF MATERIALS REPORT

BOARD NAME: 104TMOD      REPORT DATE: 18NOV99  
 ASSEMBLY LEVEL NUMBER: 99053010  
 PROJECT NUMBER: P9800153

CBDS

PART      PART      DESCRIPTION AND  
 \*\* QTY. NAME    VALUE    NUMBER    DEVICE DESIGNATIONS \*\*\*\*\*  
 \*\*\*\*\*

- 1 98853010 98853010 98853010 PCB
- 2 .015 .015 70340010 .015MF----10%----50VDC----T/C----T&R  
     C50, C53
- 2 .01CD .01CD 70320248 .01MF----20%---1000VDC---CD--T&A  
     C20, C41
- 3 .047 .047 70340017 .047MF----10%----50VDC----MON----T&R  
     C17, C38, C39
- 11 .1 .1 70340100 .1MF----+80-20%--50VDC---AXL----T&R  
     C1, C2, C11, C12, C13, C23, C25, C30,  
     C37, C40, C49
- 3 .1P10 .1P10 70340101 .1MF-----10%----50VDC----MON----T&R  
     C16, C21, C27
- 1 .1SF .1SF 70330113 0.10 MFD 10% 100V STCK FILM T&A  
     C34
- 1 .22SF2 .22SF2 70330114 0.22 MF 5% 100V STCK FILM t&a  
     C19
- 4 .33W5 .33W5 70250003 .33--5W--10%--WW--AXL  
     R32, R40, R71, R72
- 3 1.5K 1.5K 70240018 1.5K--1/4W--5%----CF--T&R  
     R12, R18, R59
- 1 10 10 70240003 10----1/4W--5%----CF--T&R  
     R85
- 2 100 100 70240010 100---1/4W--5%----CF--T&R  
     R34, R43
- 3 1000R35 1000R35 70320186 1000MF----20%----35VDC--EL--T&A  
     C42, C44, C48
- 1 1000SV50 1000SV50 70320147 1000MF--30/20%--50VDC--EL-R/S  
     C46
- 3 100FP 100FP 70240096 100FP-1/4W--5%----FP--T&R  
     R33, R38, R41
- 8 100K 100K 70240034 100K--1/4W--5%----CF--T&R

R25, R29, R31, R46, R47, R56, R57, R65

5 100PF 100PF 70340054 100PF-----10%----50VDC----T/C----T&R  
C6, C10, C22, C24, C31

4 10K 10K 70240025 10K---1/4W--5%----CF--T&R  
R63, R75, R81, R83

1 10KACRA 71190914 71190914 10K--15A--12MM--R/A D-SHAFT  
VR2

1 10KCRA 71190902 71190902 10K--15C--12MM--R/A D-SHAFT  
VR1

1 10PF 10PF 70340050 10PF-----5%-----T/C----T&R  
C18

1 13886 13886 70413886 SZ-13886-2 DUAL DIODE  
CR26

2 150W5 150W5 70250040 150--5W--10%--WW--AXL  
R77, R87

2 15K 15K 70240027 15K---1/4W--5%----CF--T&R  
R66, R68

1 180 180 70240012 180---1/4W--5%----CF--T&R  
R42

1 180PF 180PF 70340056 180PF-----10%----50VDC----T/C----T&R  
C54

2 1ASB 1ASB 70900379 1 AMP S/B FUSE WITH 2 FUSECLIPS #70900816  
F1, F2

4 1K 1K 70240017 1K----1/4W--5%----CF--T&R  
R2, R15, R64, R73

2 1M 1M 70240039 1M----1/4W--5%----CF--T&R  
R6, R7

6 1N4003 1N4003 70464003 1N4003 200V SILICON DIODE  
CR39, CR40, CR41, CR42, CR44, CR46

34 1N4148 4148 70464148 1N4148 75V 10MA SILICON DIODE  
CR1, CR2, CR3, CR4, CR5, CR6, CR10,  
CR11, CR12, CR13, CR14, CR16, CR17,  
CR18, CR19, CR21, CR22, CR23, CR24,  
CR25, CR29, CR30, CR31, CR32, CR33,  
CR35, CR37, CR49, CR50, CR51, CR52,  
CR53, CR54, CR55

6 1N4744 4744 70440102 SZG40102 15V 5% ZENER DIODE

CR8, CR36, CR43, CR45, CR47, CR48

2 1N5393 5393 70465393 1N5393-RL 200V, 1.5, 5% DIODE -T&R

CR20, CR27

2 1SS142 1SS142 70400142 1ss142 250v SILICON DIODE

CR9, CR34

2 2.2K 2.2K 70240020 2.2K--1/4W--5%---CF--T&R

R55, R74

6 2.2R50 2.2R50 70320180 2.2MF-----20%---50VDC---EL--T&A

C3, C4, C5, C9, C36, C55

2 2.7K 2.7K 70240021 2.7K--1/4W--5%---CF--T&R

R51, R80

2 2.7KW1 2.7KW1 70210016 2.7K--1W---5%---MO--T&R

R14, R62

2 2200R63 2200R63 70320347 2200MF---20%---63VDC---EL---R/S

C14, C28

2 220K 220K 70240036 220K--1/4W--5%---CF--T&R

R8, R84

2 220R50 220R50 70320187 220MF-----20%---50VDC---EL--T&A

C43, C45

2 220R63 220R63 70320305 220uF---63V--20%---EL--T&A

C15, C29

1 22FP 22FP 70240100 22FP--1/4W--5%---FP-----

R70

8 22K 22K 70240029 22K---1/4W--5%---CF--T&R

R4, R5, R11, R22, R28, R36, R37, R52

6 22R50 22R50 70320181 22MF-----20%---50VDC---EL--T&A

C8, C26, C32, C47, C51, C52

2 22W1 22W1 70210001 22----1W---5%---MO--T&R

R17, R61

2 2KW5 2KW5 70250063 2K--5W--10%--WW--AXL

R26, R49

2 2N3904 3904 70463904 3904/SPS7239 TO 92 NPN T&A

Q8, Q9

1 3.3K 3.3K 70240022 3.3K--1/4W--5%---CF--T&R

R1

1 33 33 70240004 33----1/4W--5%----CF--T&R  
 R23

1 33K 33K 70240030 33K---1/4W--5%----CF--T&R  
 R13

2 39PF 39PF 70340052 39PF-----50VDC----T/C----T&R  
 C33, C35

8 4.7K 4.7K 70240023 4.7K--1/4W--5%----CF--T&R  
 R20, R30, R44, R45, R54, R69, R89, R90

4 437STW 70901891 70901891 SPCR, .437(#4),.187 SW,AL  
 SO1, SO2, SO3, SO4

3 4560 4560 70414560 4560 DUAL OP AMP IC  
 U1, U2, U3

2 470 470 70240015 470---1/4W--5%----CF--T&R  
 R88, R92

2 470K 470K 70240038 470K--1/4W--5%----CF--T&R  
 R10, R93

2 47FP 47FP 70240090 47FP--1/4W--5%----FP--T&R  
 R78, R79

7 47K 47K 70240031 47K---1/4W--5%----CF--T&R  
 R24, R35, R39, R50, R60, R76, R86

1 4P2TLRA 4P2TLRA 71322395 4P2T RA LEVER ACTUATED SLIDE SWITCH  
 S2

1 5.6W5 5.6W5 70250026 5.6--5W--10%--WW--AXL  
 R67

1 5331 5331 70405331 SJE-5331 CASE-77 NPN  
 Q2

1 6.8KW2 6.8KW2 70250052 6.8K---2W---5%---MF---T&R  
 R91

1 6531 6531 70466531 MPS-6531 TO92 NPN TRANS. T&A  
 Q4

1 6533 6534 70466533 MPS-6533/34 TO-92 PNP TRANS T&A  
 Q5

1 68K 68K 70240032 68K---1/4W--5%----CF--T&R  
 R9

1 7036 7036 70407036 SJE-7036 CASE-77 PNP XSISTOR

Q7

1 73100AT 73100T 70473100 SJ-73100, 3 AMP, 100V, METRIC TO-3, PNP TRANS

Q6

2 820 820 70240019 820---1/4W--5%---CF--T&R

R27, R48

1 83100AT 83100T 70483100 SJ-83100, NPN, 3 AMP, 100V, METRIC TO-3 TRANS

Q3

2 8PRC12J2 8PRC12J2 70600052 8C PRE-TIN .100 CTR 12" JUMPER (SPLIT VERSION)

J26, J27

1 DG211 DG211 70420211 DG211 CJ I.C.

U6

1 DIN7RA 71466226 71466226 CONN 7P R/A PCMNT DIN W/ 4 MNT. HOLES

J16

3 FMPU 73711811 73711811 M118-171 C.B. FEMALE MOLEX PIN

J7, J18, J22

1 HS0675 98000675 98000675 TKO 80 HEATSINK

HS3

2 HS2522 98002522 98002522 3/8" HEATSINK PUNCHED

HIS1, HIS2

1 J174 J174 70460174 J-174 30V TO-92 P-CHAN FET T&A

Q10

18 J325 J 70600005 22GA JUMPER WIRES T&R

JP3000, JP3001, JP3002,  
JP3006, JP3007, JP3009,  
JP3010, JP3011, JP3012, JP3013, JP3014,  
JP3015, JP3017,  
JP3020, JP3021, JP3023, JP3024,  
JP3025

1 J35 J 70600005 22GA JUMPER WIRES T&R

JP3500,

18 J4 J 70600005 22GA JUMPER WIRES T&R

JP4000, JP4001, JP4002, JP4003, JP4004,  
JP4005, JP4006, JP4007, JP4008, JP4009,  
JP4010, JP4012, JP4013, JP4014,  
JP4015, JP4016, JP4017, JP4018,

3 J5 J 70600005 22GA JUMPER WIRES T&R

JP5000, JP5001, JP5002,

1 J6 J 70600005 22GA JUMPER WIRES T&R

JP6000,

1 J7 J 70600005 22GA JUMPER WIRES T&R  
JP7000,

5 J8 J 70600005 22GA JUMPER WIRES T&R  
JP8000, JP8001, JP8002, JP8004,  
JP8006,

5 JMP JMP 70600005 22 GA. JUMPER WIRE T&R  
J15, P1, P2, P3, P4

1 KBU6J 70400605 70400605 6A, 600V, INLINE DIODE BRIDGE RECTIFIER  
BR1

7 MMPU 73711812 73711812 R93-12 PN C.B. MALE MOLEX PIN  
J6, J8, J19, J20, J21, J23, J24

1 PRASW PRASW 71322289 DPDT P/P CB MNT SWITCH  
S1

1 RALEDRSL RALEDRSL 70450053 LED, T-1, RED, W/STOPPER LEAD T&A  
CR38

4 RAMN6322 71466322 71466322 JACK MONO R/A 1/4" 6.5MM NINS  
J1, J2, J3, J4

1 RASL6223 71466223 71466223 jack stereo r/a 1/4" 6.5mm  
J13

1 RASN6323 71466323 71466323 JACK STEREO R/A 1/4" 6.5MM NINS  
J9

1 SPX8 SPX8 XXXXXXXXX 8 EACH OF STAKE PINS  
J5

1 TB1129 70901129 70901129 2455R-8082-723 95 DEGREE THERMAL BREAKER  
TB1

1 TP XXXXXXXXX XXXXXXXXX  
TP1000

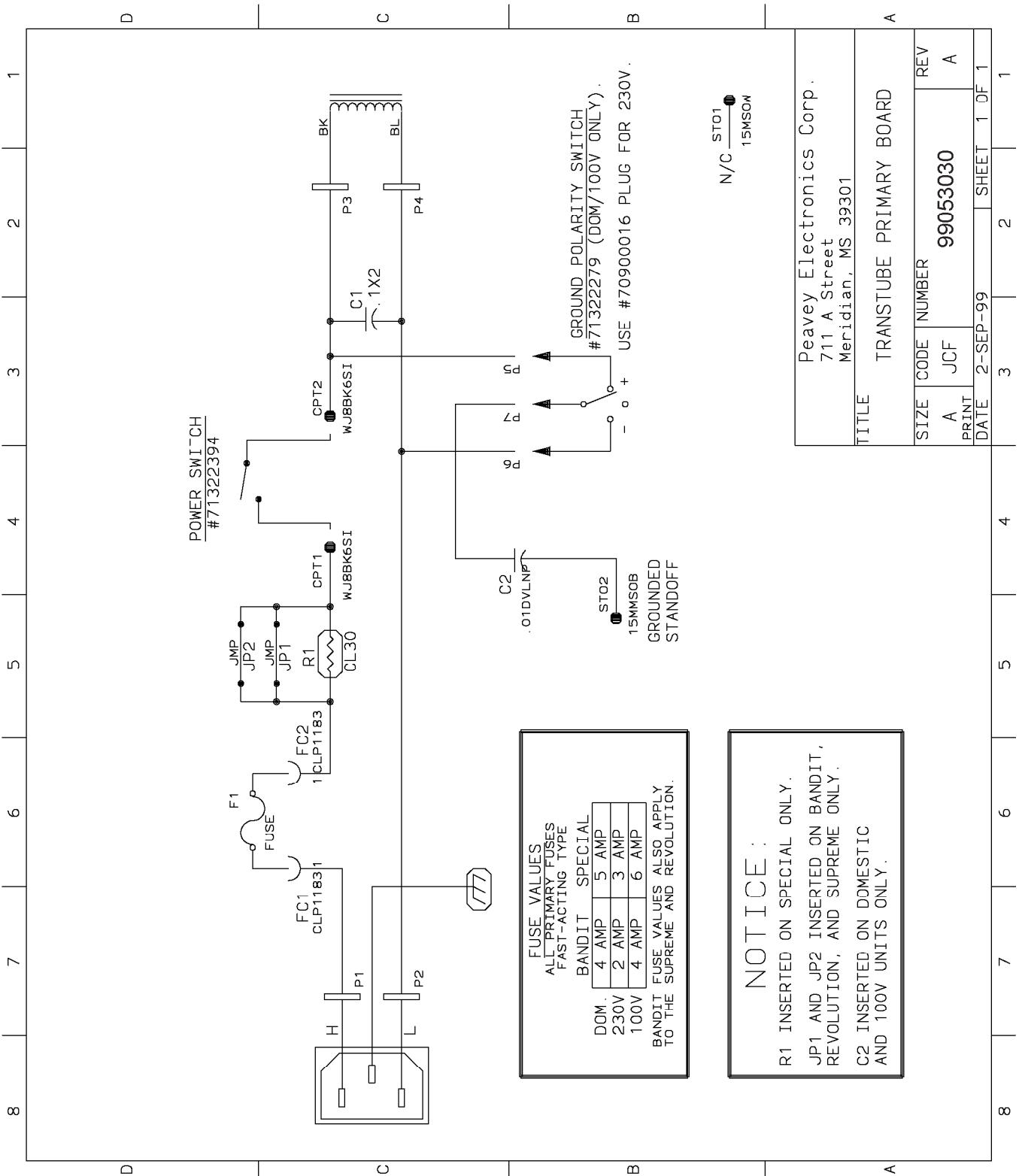
2 WJ6WH8 91090507 91090507 WH--16G--8"--WJ6--WJ6  
J777, J778

2 WJ8BK5SP WJ8BK5SP 91090506 BK-18G-5"-CPT-250SPD/RA  
J11, J12

1 WJ8BL14 WJ8BL14 91014148 BL-18G-14"-CPT-205SPD  
J14

1 WJ8YL14 WJ8YL14 91015149 YL-18G-14"-CPT-205SPD  
J10

\*\*\*\*\*



FUSE VALUES  
ALL PRIMARY FUSES  
FAST-ACTING TYPE

	BANDIT	SPECIAL
DOM.	4 AMP	5 AMP
230V	2 AMP	3 AMP
100V	4 AMP	6 AMP

BANDIT FUSE VALUES ALSO APPLY  
TO THE SUPREME AND REVOLUTION.

**NOTICE:**

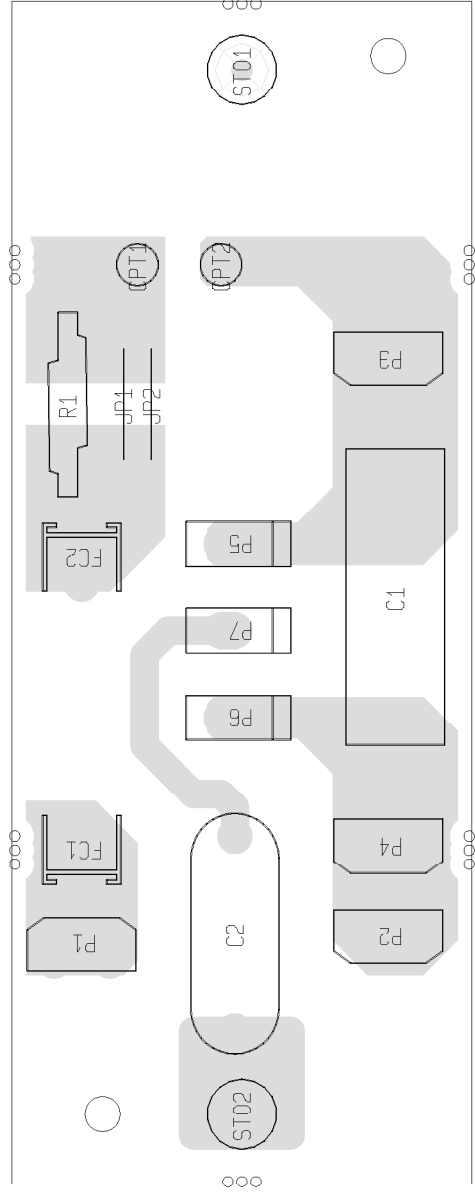
R1 INSERTED ON SPECIAL ONLY.  
JP1 AND JP2 INSERTED ON BANDIT,  
REVOLUTION, AND SUPREME ONLY.  
C2 INSERTED ON DOMESTIC  
AND 100V UNITS ONLY.

Peavey Electronics Corp. 711 A Street Meridian, MS 39301		
TITLE TRANSTUBE PRIMARY BOARD		
SIZE A	CODE JCF	NUMBER 99053030
PRINT DATE	2-SEP-99	SHEET 1 OF 1
	3	2
	1	1



PARTS NOT PLACED IN 99053030	R1
------------------------------------	----

PARTS NOT PLACED IN 99053031	C2, R1
	P5, P6, P7



## TRANSTUBE PRIMARY

PARTS NOT PLACED IN 99053032	JP1, JP2
------------------------------------	----------

PARTS NOT PLACED IN 99053033	C2, JP1, JP2 P5, P6, P7
------------------------------------	----------------------------

ASS'Y P/N	BANDIT / REV DOM. PRIMARY	99053030	BANDIT / REV EXP. PRIMARY	99053031	SPECIAL DOM. PRIMARY	99053032	SPECIAL EXP. PRIMARY	99053033
-----------	---------------------------	----------	---------------------------	----------	----------------------	----------	----------------------	----------

BILL OF MATERIALS REPORT

-----

BOARD NAME: TTPRIMARY REPORT DATE: 24NOV99

HUGHES ASSEMBLY LEVEL NUMBER: 99053030 DESIGNER: TIM TAYLOR/JAMES  
PROJECT NUMBER: P9800153

CBDS  
PART PART DESCRIPTION AND

\*\* QTY. NAME VALUE NUMBER DEVICE DESIGNATIONS \*\*\*\*\*  
\*\*\*\*\*

1 98853030 98853030 98853030 PCB

1 .01DVLNP .01DVLNP 70320104 .01 MFD 125VDC DVL MYLAR +0-20%

C2

1 .1X2 70320298 70320298 .1MF 250VAC X2 20%

C1

1 15MMSOB 70901889 70901889 SPACER, 15MM, .187 BRASS

STO2

1 15MSOW 70901837 70901837 SPACER, 15mm-r(#4) .187 swage alum.

STO1

1 CL30 CL30 70240202 INRUSH CURRENT LIMITER

R1

2 CLP1183 CLP1183 70901183 FUSECLIP, PC MT - T&A

FC1, FC2

2 JMP JMP 70600005 22 GA. JUMPER WIRE T&R

JP1, JP2

4 SPD 73716194 73716194 .250 PC MNT SPADE .093 PCB

P1, P2, P3, P4

3 SPX1U SPX1U 73717003 1 STAKE PIN

P5, P6, P7

2 WJ8BK6SI WJ8BK6SI 91090305 BK-18G-6"-CPT-SI187

CPT1, CPT2

\*\*\*\*\*

\* END OF BILL OF MATERIALS REPORT \*

\*\*\*\*\*