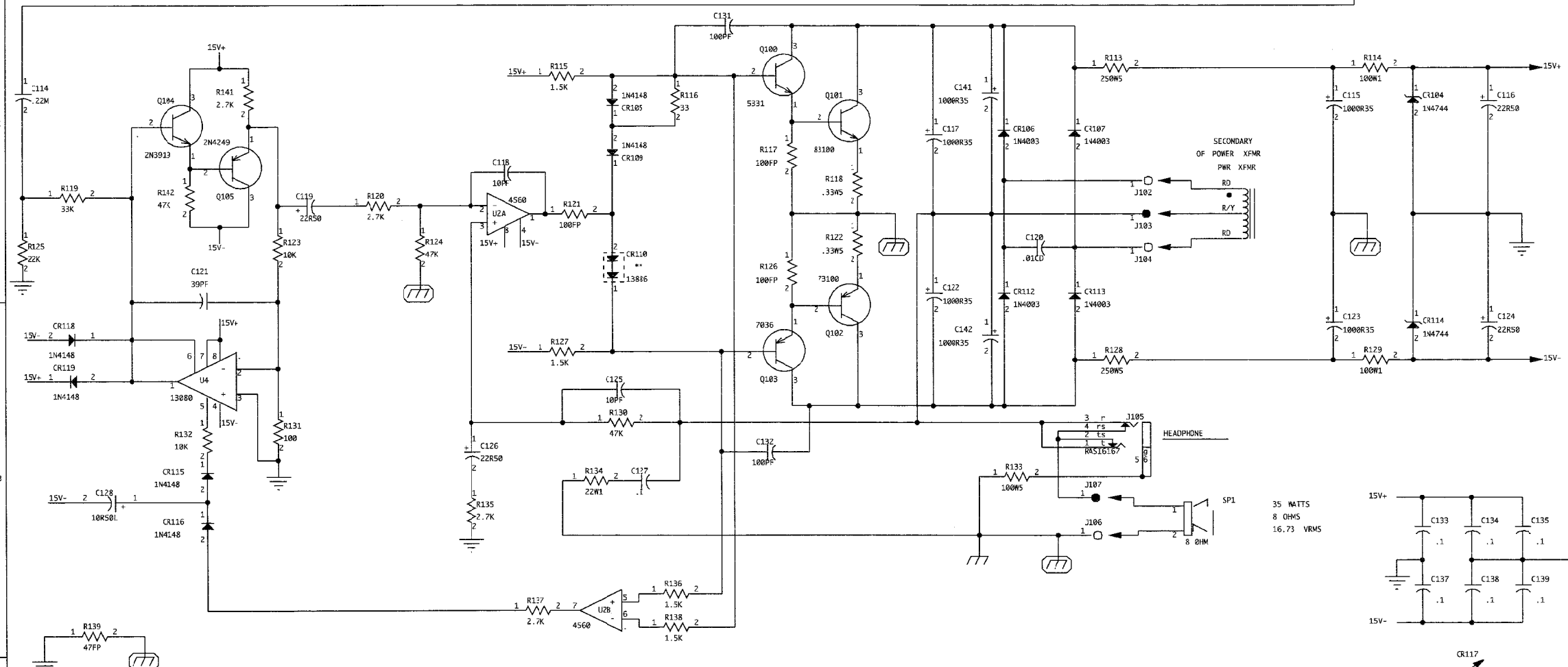
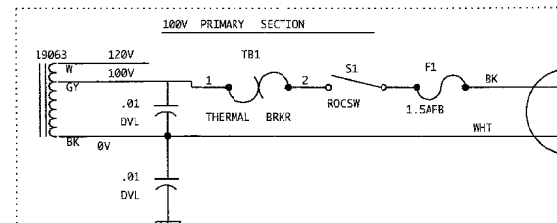
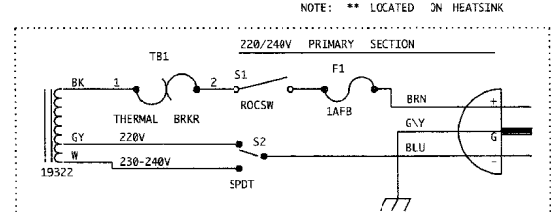
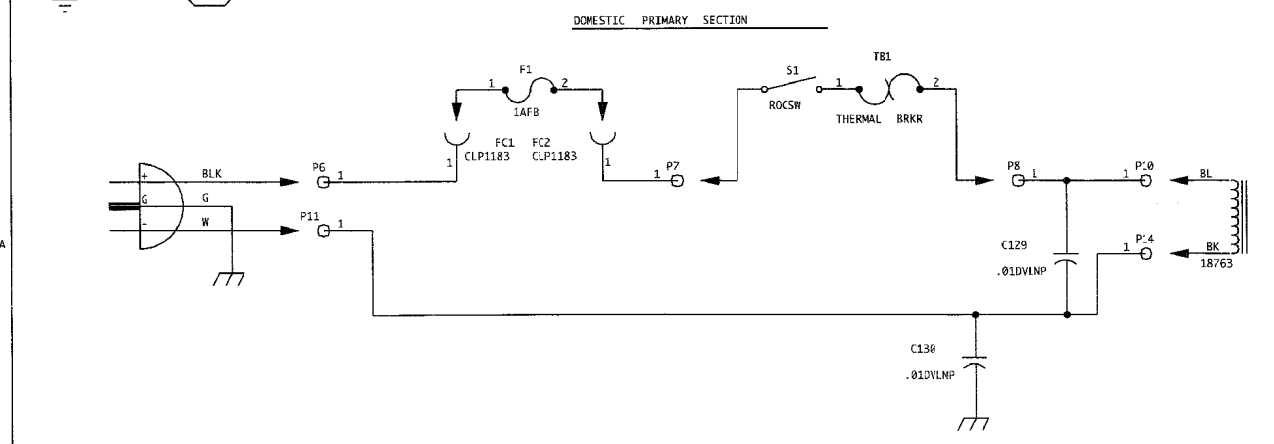


NOTICE: THIS CIRCUITRY IS PROTECTED BY U.S. PATENT NO. 4,318,053 OWNED BY PEAVEY ELECTRONICS CORP. USE OR COPYING WITHOUT EXPRESS WRITTEN AUTHORITY FROM PEAVEY IS STRICTLY FORBIDDEN AND VIOLATORS WILL BE PROSECUTED TO THE FULLEST EXTENT ALLOWED UNDER U.S. PATENT LAWS.



35 WATTS  
8 OHMS  
16.73 VRMS

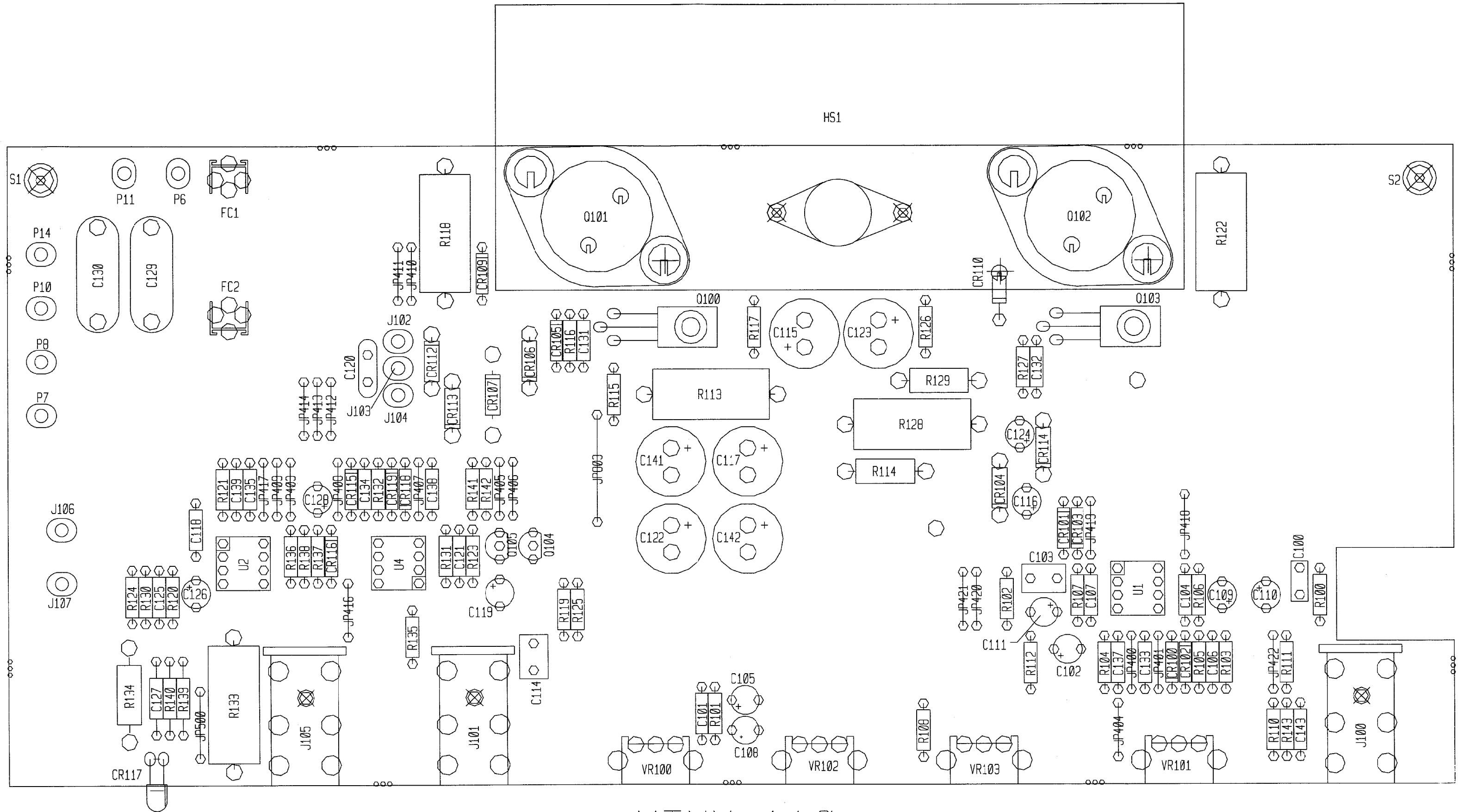


NOTE: \*\* LOCATED ON HEATSINK

NOTE: THIS IS A BASE SCHEMATIC FOR TWO ASSEMBLIES OF BARE BOARD # 98891081. SEE BOARD LAYOUTS FOR ASSEMBLY DIFFERENCES.

MINX IS A REGISTERED TRADEMARK OF PEAVEY ELECTRONICS CORP.

|                             |          |           |              |
|-----------------------------|----------|-----------|--------------|
| PEAVEY ELECTRONICS CORP.    |          |           |              |
| 711 A STREET                |          |           |              |
| MERIDIAN, MISSISSIPPI 39301 |          |           |              |
| TITLE                       |          |           |              |
| MINX 110 '95                |          |           |              |
| SIZE                        | CODE     | NUMBER    | REV          |
| C                           |          | 98891082  | A            |
| PRINT                       |          | #8150.624 |              |
| DATE                        | 1-OCT-95 |           | SHEET 1 OF 1 |



MINX 110

DO NOT INSERT C129 & C130 FOR EXPORT VERSION.

BOARD NAME: MINX 110 '95  
 ASSEMBLY LEVEL NUMBER: 99091082

PARTS LIST IS FOR BASE DESIGN.  
 SEE BD. LAYOUT FOR DIFFERENCES.

| PART   | PART      | DESCRIPTION AND  |
|--------|-----------|--|
| * QTY. | NAME      | VALUE NUMBER DEVICE DESIGNATIONS *****                                       |
| 1      | .15F      | .15F 70330113 0.10 MFD 10% 100V STCK FILM T&A C100                           |
| 1      | .001      | .001 70340000 .001MF--10%--50VDC--MON--T&R C101                              |
| 1      | 22R50     | 22R50 70320181 22MF--20%--50VDC--EL--T&A C102                                |
| 1      | .22M      | .22M 70330128 .22M 5% 50vdc my T&A C103                                      |
| 1      | 100PF     | 100PF 70340054 100PF--10%--50VDC--T/C--T&R C104                              |
| 1      | 2.2R50    | 2.2R50 70320180 2.2MF--20%--50VDC--EL--T&A C105                              |
| 2      | 100PF     | 100PF 70340054 100PF--10%--50VDC--T/C--T&R C106, C107                        |
| 1      | 1R50      | 1R50 70320261 1MF 20% 50 VDC EL T&A C108                                     |
| 3      | 22R50     | 22R50 70320181 22MF--20%--50VDC--EL--T&A C109, C110, C111                    |
| 1      | .22M      | .22M 70330128 .22M 5% 50vdc my T&A C114                                      |
| 1      | 1000R35   | 1000R35 70320186 1000MF--20%--35VDC--EL--T&A C115                            |
| 1      | 22R50     | 22R50 70320181 22MF--20%--50VDC--EL--T&A C116                                |
| 1      | 1000R35   | 1000R35 70320186 1000MF--20%--35VDC--EL--T&A C117                            |
| 1      | 10PF      | 10PF 70340050 10PF--5%--T/C--T&R C118  |
| 1      | 22R50     | 22R50 70320181 22MF--20%--50VDC--EL--T&A C119                                |
| 1      | .01CD     | .01CD 70320248 .01MF--20%--1000VDC--CD--T&A C120                             |
| 1      | 39PF      | 39PF 70340052 39PF--50VDC--T/C--T&R C121                                     |
| 2      | 1000R35   | 1000R35 70320186 1000MF--20%--35VDC--EL--T&A C122, C123                      |
| 1      | 22R50     | 22R50 70320181 22MF--20%--50VDC--EL--T&A C124                                |
| 1      | 10PF      | 10PF 70340050 10PF--5%--T/C--T&R C125  |
| 1      | 22R50     | 22R50 70320181 22MF--20%--50VDC--EL--T&A C126                                |
| 1      | .1        | .1 70340100 .1MF--80-20%--50VDC--AXL--T&R C127                               |
| 1      | 10R50L    | 10R50L 70320185 10MF--20%--50VDC--LL--T&A C128                               |
| 2      | .01DVLNPN | .01DVLNPN 70320104 .01 MFD 125VDC DVL MYLAR +0-20% C129, C130                |
| 2      | 100PF     | 100PF 70340054 100PF--10%--50VDC--T/C--T&R C131, C132                        |
| 6      | .1        | .1 70340100 .1MF--80-20%--50VDC--AXL--T&R C133, C134, C135, C137, C138, C139 |
| 2      | 1000R35   | 1000R35 70320186 1000MF--20%--35VDC--EL--T&A C141, C142                      |
| 1      | .001      | .001 70340000 .001MF--10%--50VDC--MON--T&R C143                              |
| 4      | 1N4148    | 4148 70464148 1N4148 75V 10MA SILICON DIODE CR100, CR101, CR102, CR103       |
| 1      | 1N4744    | 4744 70440102 SZG40102 15V 5% ZENER DIODE CR104                              |
| 1      | 1N4148    | 4148 70464148 1N4148 75V 10MA SILICON DIODE CR105                            |
| 2      | 1N4003    | 1N4003 70464003 1N4003 200V SILICON DIODE CR106, CR107                       |

|   |          |          |          |  |
|---|----------|----------|----------|--|
| 1 | 1N4148   | 4148     | 70464148 | 1N4148 75V 10MA SILICON DIODE CR109                      |
| 1 | 13886    | 13886    | 70413886 | SZ-13886-2 DUAL DIODE CR110                              |
| 2 | 1N4003   | 1N4003   | 70464003 | 1N4003 200V SILICON DIODE CR112, CR113                   |
| 1 | 1N4744   | 4744     | 70440102 | SZG40102 15V 5% ZENER DIODE CR114                        |
| 2 | 1N4148   | 4148     | 70464148 | 1N4148 75V 10MA SILICON DIODE CR115, CR116               |
| 1 | RALEDGSL | RALEDGSL | 70450054 | LED, T-1, GRN, W/STOPPER LEAD T&A CR117                  |
| 2 | 1N4148   | 4148     | 70464148 | 1N4148 75V 10MA SILICON DIODE CR118, CR119               |
| 2 | CLP1183  | CLP1183  | 70901183 | FUSECLIP, PC MT - T&A FC1, FC2                           |
| 1 | HS2034   | 98002034 | 98002034 | Z-BAR HEATSINK HSI                                       |
| 2 | RASN6165 | 71466165 | 71466165 | JK R/A 12.5MM NIN STEREO -88 J100, J101                  |
| 1 | FMPU     | 73711811 | 73711811 | M118-171 C.B. FEMALE MOLEX PIN J102                      |
| 1 | MMPU     | 73711812 | 73711812 | R93-12 PN C.B. MALE MOLEX PIN J103                       |
| 1 | FMPU     | 73711811 | 73711811 | M118-171 C.B. FEMALE MOLEX PIN J104                      |
| 1 | RASI6167 | 71466167 | 71466167 | JK R/A 12.5MM INS. STEREO -88 J105                       |
| 1 | FMPU     | 73711811 | 73711811 | M118-171 C.B. FEMALE MOLEX PIN J106                      |
| 1 | MMPU     | 73711812 | 73711812 | R93-12 PN C.B. MALE MOLEX PIN J107                       |
| 6 | FMPU     | 73711811 | 73711811 | M118-171 C.B. FEMALE MOLEX PIN P6, P7, P8, P10, P11, P14 |
| 1 | 5331     | 5331     | 70405331 | SJE-5331 CASE-77 NPN Q100                                |
| 1 | 83100    | 83100    | 70483100 | SJ-83100, NPN, 3 AMP, 100V, METRIC TO-3 TRANS Q101       |
| 1 | 73100    | 73100    | 70473100 | SJ-73100, 3 AMP, 100V, METRIC TO-3, PNP TRANS Q102       |
| 1 | 7036     | 7036     | 70407036 | SJE-7036 CASE-77 PNP XSISTOR Q103                        |
| 1 | 2N3919   | 3919     | 70463919 | SKA-3919 TO92 NPN TRANS T&A Q104                         |
| 1 | 2N4249   | 4249     | 70464249 | 2N4249/690 30V TO-92 PNP T&A Q105                        |
| 1 | 4.7K     | 4.7K     | 70240023 | 4.7K-1/4W-5%--CF--T&R R100                               |
| 1 | 8.2K     | 8.2K     | 70240049 | 8.2K-1/4W-5%--CF--T&R R101                               |
| 1 | 1K       | 1K       | 70240017 | 1K-1/4W-5%--CF--T&R R102                                 |
| 1 | 10K      | 10K      | 70240025 | 10K-1/4W-5%--CF--T&R R103                                |
| 2 | 220K     | 220K     | 70240036 | 220K-1/4W-5%--CF--T&R R104, R105                         |
| 1 | 33K      | 33K      | 70240030 | 33K-1/4W-5%--CF--T&R R106                                |
| 1 | 47K      | 47K      | 70240031 | 47K-1/4W-5%--CF--T&R R107                                |
| 1 | 2.7K     | 2.7K     | 70240021 | 2.7K-1/4W-5%--CF--T&R R108                               |
| 1 | 680      | 680      | 70240016 | 680-1/4W-5%--CF--T&R R110                                |
| 1 | 2.7K     | 2.7K     | 70240021 | 2.7K-1/4W-5%--CF--T&R R111                               |
| 1 | 2.2K     | 2.2K     | 70240020 | 2.2K-1/4W-5%--CF--T&R R112                               |
| 1 | 250W5    | 250W5    | 70250002 | 250-5W-10%--NW--AXL R113                                 |

|   |        |          |          |  |
|---|--------|----------|----------|--|
| 1 | 100W1  | 100W1    | 70210003 | 100-1W-5%-MO-T&R<br>R114                     |
| 1 | 1.5K   | 1.5K     | 70240018 | 1.5K-1/4W-5%-CF-T&R<br>R115                  |
| 1 | 33     | 33       | 70240004 | 33-1/4W-5%-CF-T&R<br>R116                    |
| 1 | 100FP  | 100FP    | 70240096 | 100FP-1/4W-5%-FP-T&R<br>R117                 |
| 1 | .33W5  | .33W5    | 70250003 | .33-5W-10%-WW-AXL<br>R118                    |
| 1 | 33K    | 33K      | 70240030 | 33K-1/4W-5%-CF-T&R<br>R119                   |
| 1 | 2.7K   | 2.7K     | 70240021 | 2.7K-1/4W-5%-CF-T&R<br>R120                  |
| 1 | 100FP  | 100FP    | 70240096 | 100FP-1/4W-5%-FP-T&R<br>R121                 |
| 1 | .33W5  | .33W5    | 70250003 | .33-5W-10%-WW-AXL<br>R122                    |
| 1 | 10K    | 10K      | 70240025 | 10K-1/4W-5%-CF-T&R<br>R123                   |
| 1 | 47K    | 47K      | 70240031 | 47K-1/4W-5%-CF-T&R<br>R124                   |
| 1 | 22K    | 22K      | 70240029 | 22K-1/4W-5%-CF-T&R<br>R125                   |
| 1 | 100FP  | 100FP    | 70240096 | 100FP-1/4W-5%-FP-T&R<br>R126                 |
| 1 | 1.5K   | 1.5K     | 70240018 | 1.5K-1/4W-5%-CF-T&R<br>R127                  |
| 1 | 250W5  | 250W5    | 70250002 | 250-5W-10%-WW-AXL<br>R128                    |
| 1 | 100W1  | 100W1    | 70210003 | 100-1W-5%-MO-T&R<br>R129                     |
| 1 | 47K    | 47K      | 70240031 | 47K-1/4W-5%-CF-T&R<br>R130                   |
| 1 | 100    | 100      | 70240010 | 100-1/4W-5%-CF-T&R<br>R131                   |
| 1 | 10K    | 10K      | 70240025 | 10K-1/4W-5%-CF-T&R<br>R132                   |
| 1 | 100W5  | 100W5    | 70250006 | 100-5W-10%-WW-AXL<br>R133                    |
| 1 | 22W1   | 22W1     | 70210001 | 22-1W-5%-MO-T&R<br>R134                      |
| 1 | 2.7K   | 2.7K     | 70240021 | 2.7K-1/4W-5%-CF-T&R<br>R135                  |
| 1 | 1.5K   | 1.5K     | 70240018 | 1.5K-1/4W-5%-CF-T&R<br>R136                  |
| 1 | 2.7K   | 2.7K     | 70240021 | 2.7K-1/4W-5%-CF-T&R<br>R137                  |
| 1 | 1.5K   | 1.5K     | 70240018 | 1.5K-1/4W-5%-CF-T&R<br>R138                  |
| 1 | 47FP   | 47FP     | 70240090 | 47FP-1/4W-5%-FP-T&R<br>R139                  |
| 1 | 1.5K   | 1.5K     | 70240018 | 1.5K-1/4W-5%-CF-T&R<br>R140                  |
| 1 | 2.7K   | 2.7K     | 70240021 | 2.7K-1/4W-5%-CF-T&R<br>R141                  |
| 1 | 47K    | 47K      | 70240031 | 47K-1/4W-5%-CF-T&R<br>R142                   |
| 1 | 15K    | 15K      | 70240027 | 15K-1/4W-5%-CF-T&R<br>R143                   |
| 2 | 250STW | 70901856 | 70901856 | SPCR, 1/4, R(#4), .187 SW, AL<br>S1, S2      |
| 2 | 4560   | 4560     | 70414560 | 4560 DUAL OP AMP IC<br>U1, U2                |
| 1 | 13080  | 13080    | 70413080 | LM3080N CUSTOM SELECTED<br>U4                |
| 1 | POT801 | 71190801 | 71190801 | 50KB 12MM VPC ROTARY D-SHAFT<br>VR100        |
| 2 | POT800 | 71190800 | 71190800 | 10KB 12MM VPC ROTARY D-SHAFT<br>VR101, VR102 |

1 POT802 71190802 71190802 50KA 12MM VPC ROTARY D-SHAFT  
VR103

\*\*\*\*\*