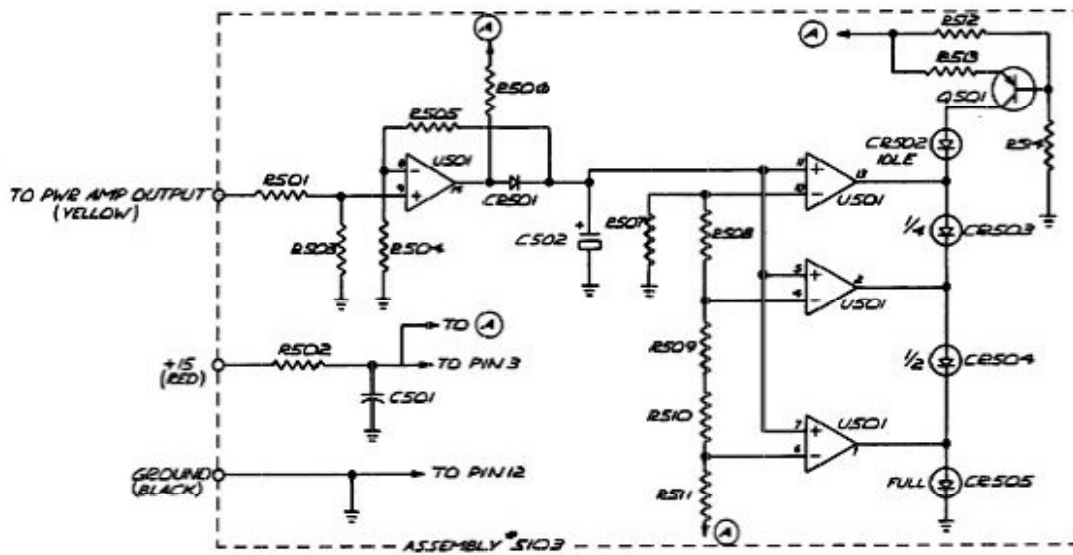


(2)



SENSITIVITY
 FULL - 32 V
 1/2 - 22.5 V
 1/4 - 16 V

TOLERANCES UNLESS
 OTHERWISE SPECIFIED
 FRACTIONS DEC. ANGLES

APPROVALS
 DESIGNED BY JL
 CHECKED BY JL
 DATE 10/4/72

Corwin-Vega, Inc.

SCHEMATIC - LED BOARD
 BG-250

SIZE B
 DRAWING NO. 5305

DO NOT SCALE DRAWING SHEET