

Fender[®]

SUPER-SONIC™ 22
(This is the model name for warranty claims)

p/n 2160000000 (Black 120V)
p/n 2160000400 (Blonde 120V)

SERVICE MANUAL





SUPER-SONIC™22

(This is the model name for warranty claims)

FEBRUARY 2010

IMPORTANT NOTICE

• Copyright © 2010 FMIC. All rights reserved. All information contained herein is CONFIDENTIAL and PROPRIETARY and is the property of Fender Musical Instruments Corporation. It is not to be sold or assigned to another party and is disclosed solely for use by Fender® Authorized Service Centers for purposes of product service and maintenance. All information is not to be disclosed to others without the expressed permission of Fender Musical Instruments Corporation. All

specifications are subject to change without notice. This information and any copies produced electronically or otherwise must be surrendered upon demand of Fender Musical Instruments Corporation.

• Parts marked with two asterisks (**) indicate the required use of that specific part. This is necessary for RELIABILITY and SAFETY requirements. **DO NOT USE A SUBSTITUTE!**

PARTS LIST CODES

The description codes used in the itemized Parts Lists are defined below:

CAPACITOR CODES

CAP AE = Aluminum Electrolytic
 CAP CA = Ceramic Axial
 CAP CD = Ceramic Disk
 CAP CR = Ceramic Radial
 CAP MPF = Metalized Polyester Film

CAP MY = Mylar
 CAP PFF = Polyester Film/Foil

RESISTOR CODES

RES CC = Carbon Comp
 RES CF = Carbon Film

ATTENTION:

WARRANTY SERVICE PROCEDURES

The Super-Sonic 22 Amplifier is considered to be field serviceable to the component level. As such stuffed PCB Assemblies are not readily available for this unit. Any Fender Authorized Service Center in need of a warranty replacement PCB Assembly for this unit should contact FMIC Tech Support by phone at (866) 345-3642, or by email sent to: service@fender.com.



RES FP = Flame Proof
 RES MF = Metal Film
 RES MOX = Metal Oxide
 RES WW = Wire Wound

HARDWARE CODES

BLX = Black Oxide
 CR = Chrome Plated
 HWH = Hex Washer Head
 M = Machine Screw

SUPER-SONIC™22

(This is the model name for warranty claims)

NI = Nickel Plated
 OHP = Oval Head Phillips
 PB = Particle Board
 PHP = Pan Head Phillips
 PHPS = Pan Head Phillips Sems
 SMA = Sheet Metal "A" Point
 SMB = Sheet Metal "B" Point
 SS = Stainless Steel
 TF = Thread Forming
 ZI = Zinc Plated



SUPER-SONIC™22

(This is the model name for warranty claims)

SPECIFICATIONS

| | | |
|---|------------------------------------|--------------------|
| Model Name: | Super-Sonic 22 | |
| Release Number: <i>(Not a model number)</i> | PR 904 | |
| Part Numbers | (120V, 60Hz) US: | 2160000x00 |
| | (110V, 60Hz) TW: | 2160001x00 |
| | (240V, 50Hz) AUS: | 2160003x00 |
| | (230V, 50Hz) UK: | 2160004x00 |
| | (230V, 50Hz) ARG: | 2160005x00 |
| | (230V, 50Hz) EUR: | 2160006x00 |
| | (100V, 50Hz) JPN: | 2160007x00 |
| | (220V, 60Hz) ROK: | 2160009x00 |
| | “x” = 0: Black “x” = 4: Blonde | |
| Power Requirement: | 120W | |
| Power Output: | 22W RMS into 8 ohms @ 5 %THD | |
| Power Amp Sensitivity: | 2.87V for 22W into 8 ohms @ 5 %THD | |
| Impedances | Input (Pre-Amp): | 1 meg ohms |
| | FX Send: | 220 ohms |
| | FX Return: | 10k ohms |
| Dimensions | Height: | 17.5 in (44.45 cm) |
| | Width: | 24.0 in (60.96 cm) |
| | Depth: | 8.5 in (21.59 cm) |
| Weight: | 40 lbs (18.18 kg) | |

Product specifications are subject to change without notice



SUPER-SONIC™22

(This is the model name for warranty claims)

SERVICE NOTES

1. **CHASSIS REMOVAL** is accomplished by first removing four (4) screws from the rear upper cabinet panel. Remove the panel. Remove three (3) screws from the bottom lip of the rear of the chassis that attaches to the inside top of the cabinet. Remove four (4) screws from the top of the cabinet. Unplug the speaker cable from the "Main Spkr" jack on the rear panel. Unplug the dual RCA cable from the dual RCA jacks on the bottom of the chassis. Slide the chassis toward the rear of the cabinet.
2. **POWER SUPPLY PCB ASSEMBLY REMOVAL** is accomplished by disconnecting all fast-on terminal wire connections to/from the power supply PCB assembly. Remove four (4) mounting screws attaching the PCB assembly to the chassis. Remove pilot light LED from the pilot light jewel assembly. Un-solder heater wiring (WJ3-4, WJ8-9) from tube socket V4 pins 4-5 and 9 and V5, pins 4-5 and 9.
3. **MAIN PCB ASSEMBLY REMOVAL** is accomplished by disconnecting all fast-on terminal wire connections to/from the main PCB assembly. Disconnect all ribbon cables from the main PCB assembly. Remove ten (10) mounting screws attaching the PCB assembly to the chassis. Un-solder all tube socket wiring at V3 thru V8. NOTE: It is not necessary to remove heater wiring from tube sockets V3 thru V8 in order to remove the main PCB assembly.
4. **CONTROL PCB ASSEMBLY REMOVAL** is accomplished by disconnecting all fast-on terminal wire connections to/from the control PCB assembly. Disconnect all ribbon cables from the control PCB assembly. Remove nine (9) knobs, ten (10) nuts and washers attaching the PCB assembly to the front panel of the chassis. Un-solder all tube socket wiring at V1 and V2. NOTE: It is not necessary to remove heater wiring from tube sockets V1 and V2 in order to remove the control PCB assembly.
5. **EFFECTS PCB ASSEMBLY REMOVAL** is accomplished by disconnecting all ribbon cables from the control PCB assembly. Remove two (2) nuts and washers and two (2) screws attaching the PCB assembly to the rear panel of the chassis.
6. **REVERB PCB ASSEMBLY REMOVAL** is accomplished by disconnecting all fast-on wire connections from the PCB assembly (P32-P35). Remove one (1) screw attaching green/yellow ground wire to the chassis. Remove one (1) screw from bottom of chassis that attaches the dual RCA jack to the chassis.

PCB EXCHANGE POLICY

Parts marked with a single asterisk (*) in the Part Lists are not field replaceable. If a failure due to one of these components is detected, please

contact the FMIC Customer Service Department to order the complete PCB Assembly.



SUPER-SONIC™22

(This is the model name for warranty claims)

CIRCUIT DESCRIPTION

This section provides concise information about new or unusual circuitry designs incorporated into this amplifier model. The purpose is to aid the service technician by providing insight into the design areas most likely to become obstacles in troubleshooting. Information is focused for its effective use while maintaining the security of Fender® proprietary information wherever possible.

PRE-AMPLIFIER

The guitar input signal flows through a tube gain stage (V1-A) before it is split into two signal paths, the "Vintage" path or the "Burn" path. The "Vintage" channel, consisting of passive 2-band tone stack, volume control and subsequent tube sections, can also be split into two paths within the channel, known as "Normal" and "Fat". The path selection will depend upon the selection of the "Vintage/Fat" front panel switch (or via Footswitch).

The "Normal/Fat" switch controls relays K3 and K4 in order to activate the desired path. When the "Normal" path is selected, relay K3 thru K4 will be in the "normally closed" state. When the "Fat" path is selected, relay K3 thru K4 will be in the "normally open" state. The "Normal" path provides a tone that is similar to the '65 Fender Vintage blackface amplifier. The "Fat" path provides a tone that is similar to the '66 Fender Fat Head blackface amplifier.

The "Vintage" channel remains active until the "Vintage/Burn" front panel switch (or via Footswitch) is selected. This will change relay K1, K2, K6 and K7 to reconfigure the "Vintage" channel to become the "Burn" channel. When the "Vintage" path is selected, relays K1, K2, K6 and K7 will be in the "normally closed" state. When the "Burn" path is selected, they will be in the "normally open" state.

The "Burn" channel provides a new tube distortion tone that is more versatile than past Fender tube drive circuits. The "Burn" channel consists of two Gain controls, a passive 3-band tone stack, volume control and an extra tube stage, V2-A. Setting "Gain 1" (R31) to "0" will provide no signal through this channel. "Gain 1" provides the high gain to the

signal, while "Gain 2" (R35) provides harmonic overtones to the signal. Using "Gain 1" and "Gain 2" in tandem can provide many distortion tones, ranging from standard clean rock "crunch" tones, to "Texas Blues" tones to "lo-fi" fizz tones, to "plays-itself" ultra-high gain tones.

The signal is directed back to the summing point at V4-B and amplifier stage at V3-A the input to the reverb circuit at V3 and V4. The amount of reverb is controlled by potentiometer R166. The reverb signal is summed at the input of V4-B. The output from V4-B is split into two paths: The "Dry" path and the "Effects Loop" path. This path selection is controlled only by the footswitch. When the "dry" path is selected, relay K5-A/B is "normally closed". When the "Effects Loop" path is selected, relay K5-A/B is normally open". When the footswitch is not used, K5-A/B will default to "normally closed". The "Effects Loop" will not be in operation unless the "Send" and "Return" jacks are connected to either an outboard Effects system or if a jumper cable connects the two jacks together. If a plug is connected only to the "Return" jack, the signal of the Pre-Amp will be broken, thus not allowing signal to flow to the "Pre-Amp Out" jack and the power amplifier. The output from the desired path ("dry" or "Effects Loop") is directed through K5-A, pin 13. From here, the signal is sent to the power amp.

POWER AMPLIFIER

The Power Amplifier is a discrete, Class AB push-pull topology with feedback. The basic amplifier sections include a phase-splitter stage (12AT7 at V5) and a pentode push-pull output stage (6V6's at V6 and V7). The output signal is directed through an output transformer capable of driving 8 ohm speaker loads. The output is wired to the External Speaker

The phase splitter circuit is a "long-tailed" configuration commonly found in Fender Tube amplifiers. The output circuit consists of two 6V6 tubes in a push-pull configuration, again, commonly used in Fender Tube amplifiers. The 1 ohm Resistors (R140 and R141) are can be used by the technician



SUPER-SONIC™22

(This is the model name for warranty claims)

to properly measure the amount of bias current for each output tube (V6 and V7). The Optimal bias setting for each tube in this amplifier is 22mA-26mA. The bias current for V6 can be derived by measuring the voltage across R140, which in this case will measure 22mV-26mV. The same procedure can be used for V7 by measuring the voltage across R141. The bias current for both output tubes is controlled by potentiometer R156, found on the Main PCB assembly.

The Feedback network consists of feedback resistor R132 and shunt resistor R133.

POWER SUPPLY

The Power Supply is typical of a Fender tube amplifier. The secondary side of the Power Transformer consists of 3 windings: high-voltage winding, low-voltage winding and heater winding. The high voltage winding is used to generate the high voltage

DC power supplies in the amplifier. The high voltage DC power supply consists of a standard bridge rectifier configuration. The "voltage-drop" resistors R148 thru R151 set the DC plate voltages used at various tube stages throughout the design. The low voltage winding is used to generate the low voltage +/-16V DC power supply, as well as the output tube bias supply. The low voltage DC power supply also consists of a standard bridge rectifier configuration. Three-Terminal regulators are used to regulate the +/-15VDC power supplies. A voltage doubler circuit (C85-C86 and D43-D44) is used on 1/2 of the low voltage winding to generate a negative DC power supply for the bias control potentiometer R156. The heater winding produces a 6.3VAC power supply that is used for the heater filament in all of the tubes in the amplifier, as well as illuminating the pilot light.



SUPER-SONIC™22

(This is the model name for warranty claims)

| PARTS LIST: | | PCB ASSEMBLY | |
|-------------|------------|-----------------------------------|---|
| QTY. | PART # | DESCRIPTION | REFERENCE DESIGNATION |
| 1 | 0078326000 | * PCB ASSY SUPER-SONIC 22 | |
| 15 | 0006260001 | DIODE 1N4448 SIGNAL | D1-2 D6 D8-10 D20-21 D23-24 D27-29 D33-34 |
| 1 | 0064510000 | LED WHITE T-1 3mm CLEAR | D26 |
| 2 | 0009512001 | CAP AE AX 22uF 25V 20% | C17 C95 |
| 1 | 0011435000 | CAP CD 680pF 1000V 10% | C25 |
| 2 | 0014689003 | XSTR N-CH JFET J111 TO-92 | Q8-9 |
| 7 | 0016739003 | XSTR NPN 2N4401 TO-92 | Q2-4 Q7 Q11 Q13-14 |
| 3 | 0016742003 | XSTR PNP 2N4403 TO-92 | Q5-6 Q12 |
| 2 | 0016795000 | IC OP-AMP DUAL TL072 | U3-4 |
| 4 | 0020534000 | DIODE 1N5402 RECTIFIER 200V C&F | D3-4 D7 D11 |
| 1 | 0020883000 | CAP CD 10pF 1000V 10% | C11 |
| 1 | 0020917000 | CAP CD 250pF 1000V 10% | C4 |
| 2 | 0311188000 | SCRW M 4-40 1/4 PHP STL ZI w/WSHR | at U5, U6 |
| 2 | 0097360000 | NUT HEX 4-40 EX LOCK | at U5, U6 |
| 3 | 0027264003 | CAP MPF .01uF 100V | C47 C52 C94 |
| 2 | 0024823000 | CAP MPF RDL .01uF 400V 10% | C12 C68 |
| 1 | 0024833000 | CAP MPF RDL .022uF 400V 10% | C24 |
| 1 | 0024835000 | CAP MPF RDL .022uF 630V 10% | C10 |
| 2 | 0024845000 | CAP MPF RDL .047uF 400V 10% | C6 C20 |
| 1 | 0024853000 | CAP MPF RDL .1uF 250V 10% | C69 |
| 2 | 0024854000 | CAP MPF RDL .1uF 400V 10% | C5 C39 |
| 2 | 0024855000 | CAP MPF RDL .1uF 630V 10% | C71-72 |
| 1 | 0024858000 | CAP MPF RDL .15uF 400V 10% | C23 |
| 3 | 0024862000 | CAP MPF RDL .22uF 400V 10% | C9 C14 C16 |
| 2 | 0024937001 | RES CF 1/4W 5% 10ohm LL | R69 R100 |
| 1 | 0024942001 | RES CF 1/4W 5% 22ohm LL | R84 |
| 1 | 0024947001 | RES CF 1/4W 5% 47ohm LL | R133 |
| 4 | 0024952001 | RES CF 1/4W 5% 100ohm LL | R71 R93-95 |
| 2 | 0024956001 | RES CF 1/4W 5% 220ohm LL | R87-88 |
| 2 | 0024961001 | RES CF 1/4W 5% 470ohm LL | R55 R68 |
| 1 | 0024963001 | RES CF 1/4W 5% 680ohm LL | R125 |
| 3 | 0024964001 | RES CF 1/4W 5% 820ohm LL | R73 R130 R132 |
| 6 | 0024965001 | RES CF 1/4W 5% 1k LL | R56-57 R62-63 R90 R101 |
| 10 | 0024969001 | RES CF 1/4W 5% 1.5k LL | R4 R14 R16 R27 R34 R39 R78 R138-139 R165 |
| 2 | 0024970001 | RES CF 1/4W 5% 1.8k LL | R106-107 |
| 2 | 0024973001 | RES CF 1/4W 5% 3.3k LL | R83 R85 |
| 1 | 0024979001 | RES CF 1/4W 5% 6.8k LL | R11 |
| 16 | 0024981001 | RES CF 1/4W 5% 10k LL | R1 R38 R58-59 R81-82 R96-98 R110-111 R121 R154 R144 R145 R126 |
| 3 | 0024983001 | RES CF 1/4W 5% 12k LL | R112 R115 R119 |
| 1 | 0024985001 | RES CF 1/4W 5% 15k LL | R6 |
| 2 | 0024987001 | RES CF 1/4W 5% 22k LL | R80 R128 |
| 3 | 0024989001 | RES CF 1/4W 5% 33k LL | R29 R60-61 |
| 2 | 0024993001 | RES CF 1/4W 5% 47k LL | R20 R70 |
| 1 | 0024996001 | RES CF 1/2W 5% 82k LL | R157 |
| 12 | 0024997001 | RES CF 1/4W 5% 100k LL | R8 R28 R41 R43-44 R52-54 R86 R113-114 R120 |
| 2 | 0024998001 | RES CF 1/4W 5% 120k LL | R19 R46 |

* Non-serviceable part. Replace complete parent assembly. See PCB EXCHANGE POLICY section above.

shaded Unique Fender® part. Order directly from the FMIC Parts Department.

shaded + * Access to this part or assembly is controlled. Please contact the FMIC Customer Service Department.

** Safety Requirement part. Replacement must match Safety Agency...-Value, if specified -Type, if specified -Approval Mark(s) if on part.

shaded + ** Both a unique Fender® part and a Safety Requirement part as defined above.



SUPER-SONIC™22

(This is the model name for warranty claims)

| PARTS LIST: | | PCB ASSEMBLY | |
|-------------|------------|----------------------------------|--|
| QTY. | PART # | DESCRIPTION | REFERENCE DESIGNATION |
| 5 | 0025059001 | RES CF 1/4W 5% 220k LL | R50 R76 R136-137 R163 |
| 1 | 0025060001 | RES CF 1/4W 5% 270k LL | R23 |
| 4 | 0025065001 | RES CF 1/4W 5% 470k LL | R24-25 R42 R45 |
| 17 | 0025069001 | RES CF 1/4W 5% 1M LL | R2 R5 R7 R30 R72 R74 R79 R91 R103-105 R124 R127 R129 R131 R161 R167 |
| 2 | 0025077001 | RES CF 1/4W 5% 3.3M LL | R22 R75 |
| 5 | 0025079001 | RES CF 1/4W 5% 4.7M LL | R17 R21 R32-33 R109 |
| 5 | 0025084001 | RES CF 1/4W 5% 10M LL | R13 R18 R92 R99 R108 |
| 5 | 0025116001 | RES CF 1/2W 5% 100k LL | R3 R15 R26 R40 R77 |
| 13 | 0025802000 | FSTN TAB MALE .250x.032 PCB MT | P1-5 P11-18 |
| 1 | 0025829001 | RES CF 1/2W 5% 150ohm LL | R118 |
| 2 | 0025832001 | RES CF 1/2W 5% 22k LL | R116-117 |
| 1 | 0025933000 | JACK RCA DUAL HORIZ PC MOUNT | J7 |
| 4 | 0025995000 | CAP CD 8200pF 1000V 20% | C73-76 |
| 1 | 0025996000 | **FUSE CLIP PCB 1/4" & 5mm DUAL | F2 |
| 18 | 0026000001 | FSTN TAB MALE .187x.032 PCB MT | P6-10 P21-26 P29-30 P31-35 |
| 1 | 0026202002 | CAP PFF .0022uF 400V 10% | C2 |
| 2 | 0026368001 | RES CF 1/2W 5% 100ohm LL | R152-153 |
| 1 | 0026502001 | CAP AE AX 100uF 100V +50%-10% | C87 |
| 4 | 0026549001 | RES CF 1/2W 5% 1.5k LL | R64-67 |
| 14 | 0026730001 | DIODE 1N4006 800V 1A | D12-13 D35-36 D39-48 |
| 2 | 0027255003 | CAP MPF .001uF 100V 10% | C77 C45 |
| 8 | 0027278003 | CAP MPF .1uF 63V 10% | C55-58 C63-66 |
| 1 | 0027286003 | CAP MPF .47uF 63V 10% | C54 |
| 2 | 0027353001 | RES FILM 1W 5% 100k LL | R135 R164 |
| 2 | 0027411000 | HDR .1 CTR 4 CKT SQ PIN | P204 P304 |
| 4 | 0027413000 | HDR .1 CTR 6 CKT SQ PIN | P101-102 P201-202 |
| 2 | 0027418000 | HDR .1 CTR 9 CKT SQ PIN | P203 P303 |
| 1 | 0027873000 | Control PCB MOUNT LINEAR 30% 25K | R156 |
| 1 | 0028029001 | RES FILM 1W 5% 1.5k LL | R102 |
| 2 | 0028091000 | SWITCH PUSH SLFLK SHORT STROKE | S1-2 |
| 2 | 0028463003 | CAP AE RDL 10uF 50V 20% | C90-91 |
| 3 | 0028459003 | CAP AE RDL 2.2uF 50V 20% | C8 C13 C81 |
| 2 | 0028471003 | CAP AE RDL 47uF 50V 20% | C57 C70 |
| 1 | 0028476003 | CAP AE RDL 100uF 50V 20% | C59 |
| 2 | 0028463003 | CAP AE RDL 10uF 50V 20% | C37 C46 |
| 10 | 0028467003 | CAP AE RDL 22uF 50V 20% | C1 C19 C21 C31-32 C35 C38 C42 C50 C62 |
| 2 | 0079274000 | CAP AE RDL 470uF 50V 20% 105C | C88-89 |
| 1 | 0028503000 | THERMISTOR 10 ohm 5A C60-11 | RT1 |
| 1 | 0028549001 | RES CF 1/4W 5% 110k LL | R37 |
| 2 | 0028740001 | RES FILM 1W 5% 470ohm LL | R142-143 |
| 1 | 0028948001 | RES CF 1/4W 5% 6.2k LL | R89 |
| 1 | 0028990001 | RES CF 1/4W 5% 51k LL | R155 |
| 1 | 0029006001 | RES CF 1/4W 5% 20k LL | R36 |
| 2 | 0029045000 | DIODE 6A 400V 6A4 LEAD FORMED | D51-52 |
| 1 | 0013562000 | IC REGULATOR +15V MC7815CT | U5 |
| 1 | 0013564000 | IC REGULATOR -15V MC7915CT | U6 |
| 2 | 0029690001 | DIODE HV 3kV 200mA | D37-38 |

* Non-serviceable part. Replace complete parent assembly. See PCB EXCHANGE POLICY section above.

shaded Unique Fender® part. Order directly from the FMIC Parts Department.

shaded + * Access to this part or assembly is controlled. Please contact the FMIC Customer Service Department.

** Safety Requirement part. Replacement must match Safety Agency...-Value, if specified -Type, if specified -Approval Mark(s) if on part.

shaded + ** Both a unique Fender® part and a Safety Requirement part as defined above.



SUPER-SONIC™22

(This is the model name for warranty claims)

| PARTS LIST: | | PCB ASSEMBLY | |
|-------------|------------|------------------------------------|--------------------------------|
| QTY. | PART # | DESCRIPTION | REFERENCE DESIGNATION |
| 2 | 0033586003 | CAP PFF RDL .0068uF 100V 10% | C79 C98 |
| 1 | 0030954003 | CAP PFF RDL .047uF 50V 5% | C49 |
| 2 | 0031040000 | CAP AE RDL 100uF 100V 20% | C85-86 |
| 2 | 0031611000 | IC OP-AMP DUAL PC4560 | U1-2 |
| 1 | 0031635001 | DIODE ZEN 1N5240B 10V 5% LL | D5 |
| 2 | 0031901000 | PIN MALE PCB .093 DIA. | P19-20 |
| 2 | 0033095001 | RES MOX FP 1W 5% 1ohm LL | R140-141 |
| 7 | 0036613000 | RELAY DPDT DIP 24VOLT 8.3mA | K1-7 |
| 1 | 0036962000 | CONTROL SHORT SHAFT 250k B | R47 |
| 1 | 0036964000 | CONTROL SNAP-IN SHORT SHAFT 100k B | R166 |
| 1 | 0037040002 | CAP PFF .0033uF 400V 10% | C96 |
| 1 | 0037619001 | RES FILM 1W 5% 82k LL | R134 |
| 1 | 0038690001 | CAP AE AX 1uF 100V 20% | C48 |
| 4 | 0038701001 | CAP CA 470pF 50V LL | C29-30 C40-41 |
| 1 | 0038703001 | CAP CA .1uF 50V | C51 |
| 6 | 0039259001 | CAP CA 220pF 100V LL | C26-28 C36 C60-61 |
| 2 | 0041268001 | RES MOX 2W 5% 10k LL | R150-151 |
| 2 | 0041465003 | XSTR N-CH JFET J113 TO-92 | Q1 Q10 |
| 1 | 0041589000 | CAP AE AX 47uF 500V +50%-10% | C78 |
| 1 | 0041740110 | RES MOX FP 2W 5% 4.7k | R148 |
| 1 | 0048903001 | RES CF 1/2W 5% 18k LL | R123 |
| 8 | 0051406003 | CAP CD 220pF 500V 10% | C3 C33 C34 C43-44 C53 C99 C100 |
| 2 | 0051408003 | CAP CD 47pF 500V 5% | C7 C18 |
| 2 | 0051458003 | CAP CD 470pF 500V 10% | C15 C92 |
| 1 | 0053860000 | CAP MPF .1uF 250VAC 20% | C97 |
| 1 | 0024819000 | CAP AE AX 22uF 500V 20% 85°C | C80 |
| 3 | 0054204000 | CAP AE RDL 22uF 450V 20% 85°C | C82-84 |
| 1 | 0057221000 | RES MOX FP 1W 5% 2.2k LL | R162 |
| 2 | 0059922000 | JACK PHONE PCB STEREO LOW PROFILE | J3 J5 |
| 1 | 0063213000 | JACK PCB STEREO CLOSED CKT | J1 |
| 1 | 0063739001 | CAP AE AX 22uF 50V 20% | C93 |
| 1 | 0064511000 | LED RED 3mm CLEAR | D25 |
| 1 | 0066026000 | CAP CD 150pF 1000V 10% | C22 |
| 4 | 0069296000 | CONTROL SHORT SHAFT 250k 15A | R10 R31 R35 R48 |
| 2 | 0069297000 | CONTROL SHORT SHAFT 250K 30A | R9,R51 |
| 2 | 0037985000 | SCRW SMA 2X3/8 PHP BLX | at J2 |
| 1 | 0069298000 | CONTROL SHORT SHAFT 1M 30A | R12 |
| 1 | 0069299000 | CONTROL SHORT SHAFT 25K B | R49 |
| 2 | 0073586001 | **FUSE PICO 1 AMP 125V | F4 F3 |
| 1 | 0070997000 | LED 3mm T-1 SUPER BRIGHT YELLOW | D32 |
| 1 | 0071226000 | CONNECTOR FEMALE 7 PIN DIN | J2 |
| 1 | 0055812000 | LED TULIP RED | PILOT LIGHT |
| 2 | 0050849000 | HEATSINK PCB LEVEL 576012U | AT U5,6 |

* Non-serviceable part. Replace complete parent assembly. See PCB EXCHANGE POLICY section above.

shaded Unique Fender® part. Order directly from the FMIC Parts Department.

shaded + * Access to this part or assembly is controlled. Please contact the FMIC Customer Service Department.

** Safety Requirement part. Replacement must match Safety Agency...–Value, if specified –Type, if specified –Approval Mark(s) if on part.

shaded + ** Both a unique Fender® part and a Safety Requirement part as defined above.



SUPER-SONIC™22

(This is the model name for warranty claims)

| PARTS LIST: | | CHASSIS ASSEMBLY - BLACK | |
|-------------|------------|----------------------------------|------------------------|
| QT Y. | PART # | DESCRIPTION | REFERENCE DESIGNATION |
| 1 | 0078319000 | *PANEL FRONT SUPER-SONIC 22 BLK | |
| 1 | 0078334000 | **XFMR PWR SUPER SONIC 22 120V | |
| 1 | 0037099000 | XFMR REVERB VIBROLUX/65 DLX | |
| 1 | 0022707000 | CHOKE FILTER | |
| 1 | 0028069000 | BUSHING SNAP 3/4x1-1/8 WHT | AT PWR XFMR |
| 3 | 0018022000 | BUSHING SNAP 5/16x17/32 BLK | AT OUT/RVB/CHOKE XFMR |
| 1 | 0036570000 | **SWITCH TOGGLE DPST W/NUTS | "POWER" |
| 1 | 0037039000 | **SWITCH TOGGLE SPST W/NUTS | "STANDBY" |
| 1 | 0047213000 | **CONNECTOR AC LINE MALE IEC | |
| 2 | 0014171000 | SCRW M 4-40x3/8 PHP BLX | AT IEC |
| 2 | 0097360000 | NUT HEX 4-40 EX LOCK | AT IEC |
| 2 | 0053480000 | WASHER FLAT .442x.692 NI | AT EFFECTS LOOP JACKS |
| 1 | 0078326000 | *PCB ASSY SUPER-SONIC 22 | |
| 14 | 0025936000 | STANDOFF NYL PCB SNAP 3/8" | AT PCB's |
| 14 | 0028937000 | SCRW TF 6-32x5/8 PHP ZI | AT PCB's |
| 1 | 0036702000 | **FUSE HOLDER 3AG FINGER GRIP | DOMESTIC |
| 1 | 0048827000 | **FUSE QA 1-1/4x1/4 250V 2A | DOMESTIC |
| 23 | 0038900000 | SCRW TF 6-32x1/4 PHP ZI | SOCKETS/XFMRS/GND |
| 2 | 0020424000 | TUBE RING UNIVERSAL (227H-2) | AT 8 PIN TUBES |
| 2 | 0023580000 | TUBE SOCKET 8 PIN (099-0724-000) | |
| 5 | 0023598000 | TUBE SHIELD (099-0723-000) | AT 9 PIN TUBES |
| 5 | 0023606000 | TUBE SOCKET 9 PIN | |
| 2 | 5550112400 | TUBE 12AT7 HIGH MU TWIN TRIODE | V3,5 |
| 1 | 5550113691 | TUBE GT-6V6-S MATCHED DUET | V6,7 |
| 1 | 5550113209 | TUBE 7025/12AX7WC (RUSSIAN) | V1 |
| 1 | 0021626000 | JACK PHONE 2/CD SOC L11 3/8"L | EXT SPKR |
| 1 | 0068270000 | JACK PHONE TIP SHUNT L12A 3/8L | MAIN SPKR |
| 2 | 5550112398 | TUBE 12AX7 CHINESE | V2,4 |
| 10 | 0041263000 | KNOB VINTAGE CREAM | |
| 1 | 0041318000 | XFMR OUTPUT 65 DELUXE | |
| 1 | 0054798000 | JEWEL ASSY LED | |
| 1 | 0031625000 | NUT HOLDER PILOT LIGHT | |
| 1 | 0051155000 | SCRW SMB #4x3/8 PHP BLX | AT REVERB JACK |
| 2 | 0014999000 | SCRW M6-32X1/4 PHP BLX | |
| 4 | 0029656000 | SCREW M8-32X1/4 PHP BLX w/WSHR | AT PWR XFMR |
| 2 | 0070998000 | CABLE ASSY RIBBON 6 CKT 2-1/2" | |
| 1 | 0079114000 | CABLE ASSY RIBBON 4 CKT 2-1/2" | |
| 1 | 0079115000 | CABLE ASSY RIBBON 9 CKT 14 " | |
| 4 | 0022293000 | WASHER FLAT .473X.750 NI | FX JACKS PWR STNDBY |
| 2 | 0028102000 | BUTTON PUSH IVORY | AT PCB SWITCHES |
| 2 | 0016436000 | WSHR LCK INTL 3/8x.687x.035 NI | AT MAIN SPKR, EXT SPKR |
| 3 | 0031153000 | WSHR FLAT 3/8x.614 NI | INPUT MAIN & EXT SPKR |
| 1 | 0017161000 | **FUSE TD 1-1/4x1/4 250V 10A | FILAMENT FUSE |
| 1 | 0017433000 | SCRW M 6-32x3/8 PHP BLX | AT REAR PANEL |

* Non-serviceable part. Replace complete parent assembly. See PCB EXCHANGE POLICY section above.

shaded Unique Fender® part. Order directly from the FMIC Parts Department.

shaded + * Access to this part or assembly is controlled. Please contact the FMIC Customer Service Department.

** Safety Requirement part. Replacement must match Safety Agency...-Value, if specified -Type, if specified -Approval Mark(s) if on part.

shaded + ** Both a unique Fender® part and a Safety Requirement part as defined above.



SUPER-SONIC™22

(This is the model name for warranty claims)

| PARTS LIST: | | CHASSIS ASSEMBLY - BLONDE | |
|-------------|------------|----------------------------------|------------------------|
| QTY. | PART # | DESCRIPTION | REFERENCE DESIGNATION |
| 1 | 0078320000 | *PANEL FRONT SUPER-SONIC 22 BRN | |
| 1 | 0078334000 | **XFMR PWR SUPER SONIC 22 120V | |
| 1 | 0037099000 | XFMR REVERB VIBROLUX/65 DLX | |
| 1 | 0022707000 | CHOKE FILTER | |
| 1 | 0028069000 | BUSHING SNAP 3/4x1-1/8 WHT | AT PWR XFMR |
| 3 | 0018022000 | BUSHING SNAP 5/16x17/32 BLK | AT OUT/RVB/CHOKE XFMR |
| 1 | 0036570000 | **SWITCH TOGGLE DPST W/NUTS | "POWER" |
| 1 | 0037039000 | **SWITCH TOGGLE SPST W/NUTS | "STANDBY" |
| 1 | 0047213000 | **CONNECTOR AC LINE MALE IEC | |
| 2 | 0014171000 | SCRW M 4-40x3/8 PHP BLX | AT IEC |
| 2 | 0097360000 | NUT HEX 4-40 EX LOCK | AT IEC |
| 2 | 0053480000 | WASHER FLAT .442x.692 NI | AT EFFECTS LOOP JACKS |
| 1 | 0078326000 | *PCB ASSY SUPER-SONIC 22 | |
| 14 | 0025936000 | STANDOFF NYL PCB SNAP 3/8" | AT PCB's |
| 14 | 0028937000 | SCRW TF 6-32x5/8 PHP ZI | AT PCB's |
| 1 | 0036702000 | **FUSE HOLDER 3AG FINGER GRIP | DOMESTIC |
| 1 | 0048827000 | **FUSE QA 1-1/4x1/4 250V 2A | DOMESTIC |
| 23 | 0038900000 | SCRW TF 6-32x1/4 PHP ZI | SOCKETS/XFMRS/GND |
| 2 | 0020424000 | TUBE RING UNIVERSAL (227H-2) | AT 8 PIN TUBES |
| 2 | 0023580000 | TUBE SOCKET 8 PIN (099-0724-000) | |
| 5 | 0023598000 | TUBE SHIELD (099-0723-000) | AT 9 PIN TUBES |
| 5 | 0023606000 | TUBE SOCKET 9 PIN | |
| 2 | 5550112400 | TUBE 12AT7 HIGH MU TWIN TRIODE | V3,5 |
| 2 | 5550113691 | TUBE GT-6V6-5 MATCHED DUET | V6,7 |
| 1 | 5550113209 | TUBE 7025/12AX7WC (RUSSIAN) | V1 |
| 1 | 0021626000 | JACK PHONE 2/CD SOC L11 3/8"L | EXT SPKR |
| 1 | 0068270000 | JACK PHONE TIP SHUNT L12A 3/8L | MAIN SPKR |
| 2 | 5550112398 | TUBE 12AX7 CHINESE | V2,4 |
| 10 | 0041263000 | KNOB VINTAGE CREAM | |
| 1 | 0041318000 | XFMR OUTPUT 65 DELUXE | |
| 1 | 0054798000 | JEWEL ASSY LED | |
| 1 | 0031625000 | NUT HOLDER PILOT LIGHT | |
| 1 | 0051155000 | SCRW SMB #4x3/8 PHP BLX | AT REVERB JACK |
| 2 | 0014999000 | SCRW M6-32X1/4 PHP BLX | |
| 4 | 0029656000 | SCREW M8-32X1/4 PHP BLX w/WSHR | AT PWR XFMR |
| 2 | 0070998000 | CABLE ASSY RIBBON 6 CKT 2-1/2" | |
| 1 | 0079114000 | CABLE ASSY RIBBON 4 CKT 2-1/2" | |
| 1 | 0079115000 | CABLE ASSY RIBBON 9 CKT 14 " | |
| 4 | 0022293000 | WASHER FLAT .473X.750 NI | FX JACKS PWR STNDBY |
| 2 | 0028102000 | BUTTON PUSH IVORY | AT PCB SWITCHES |
| 2 | 0016436000 | WSHR LCK INTL 3/8x.687x.035 NI | AT MAIN SPKR, EXT SPKR |
| 3 | 0031153000 | WSHR FLAT 3/8x.614 NI | INPUT MAIN & EXT SPKR |
| 1 | 0017161000 | **FUSE TD 1-1/4x1/4 250V 10A | FILAMENT FUSE |
| 1 | 0017433000 | SCRW M 6-32x3/8 PHP BLX | AT REAR PANEL |

* Non-serviceable part. Replace complete parent assembly. See PCB EXCHANGE POLICY section above.

shaded Unique Fender® part. Order directly from the FMIC Parts Department.

shaded + * Access to this part or assembly is controlled. Please contact the FMIC Customer Service Department.

** Safety Requirement part. Replacement must match Safety Agency...-Value, if specified -Type, if specified -Approval Mark(s) if on part.

shaded + ** Both a unique Fender® part and a Safety Requirement part as defined above.



SUPER-SONIC™22

(This is the model name for warranty claims)

| PARTS LIST: | | CABINET ASSEMBLY - BLACK | |
|-------------|------------|--|-----------------------|
| QTY. | PART # | DESCRIPTION | REFERENCE DESIGNATION |
| 1 | 0078312000 | *CABINET ASSEMBLY (BLACK) | |
| 1 | 0078312009 | *LOWER BACK ASSEMBLY (BLACK) | |
| 1 | 0078312010 | *UPPER BACK ASSEMBLY (BLACK) | |
| 1 | 0078312006 | *GRILLE FRAME ASSEMBLY (BLACK) | |
| 1 | 0049094000 | HANDLE MLD BLK | |
| 4 | 0026566000 | CORNER 2 HOLE w/TAB NI | |
| 4 | 0019276000 | GLIDE CUP NICKEL | |
| 4 | 0019275000 | INSERT GLIDE CUSHION NEOPRENE 1.27 DIA | |
| 4 | 0026625000 | SCREW WOOD 8 x 1 FH | |
| 4 | 0026571000 | SCRW SMAB 8X5/8 THP NI | |
| 4 | 0037247000 | SCREW M 8-32 X 1 OHP NI | |
| 4 | 0064162000 | NUT T 8-32 x 1/2 STR 3 PRNG BLX | |
| 1.55 | 0026570000 | TOLEX "BRAVURA BLACK" BRONCO | |
| 0.62 | 0037788000 | CLOTH GRILLE BLACK-SILVER | |
| 4 | 0021972000 | NUT T 10-32x3/4 STR 3 PRNG BLX | |

| PARTS LIST: | | CABINET ASSEMBLY - BLONDE | |
|-------------|------------|--|-----------------------|
| QTY. | PART # | DESCRIPTION | REFERENCE DESIGNATION |
| 1 | 0078313000 | *CABINET ASSEMBLY (BLONDE) | |
| 1 | 0078312009 | *LOWER BACK ASSEMBLY (BLONDE) | |
| 1 | 0078312010 | *UPPER BACK ASSEMBLY (BLONDE) | |
| 1 | 0078312006 | *GRILLE FRAME ASSEMBLY (BLONDE) | |
| 1 | 0036784000 | HANDLE MLD BROWN | |
| 4 | 0026566000 | CORNER 2 HOLE w/TAB NI | |
| 4 | 0019276000 | GLIDE CUP NICKEL | |
| 4 | 0019275000 | INSERT GLIDE CUSHION NEOPRENE 1.27 DIA | |
| 4 | 0026625000 | SCREW WOOD 8 x 1 FH | |
| 4 | 0026571000 | SCRW SMAB 8X5/8 THP NI | |
| 4 | 0037247000 | SCREW M 8-32 X 1 OHP NI | |
| 4 | 0064162000 | NUT T 8-32 x 1/2 STR 3 PRNG BLX | |
| 1.55 | 0040882000 | TOLEX CREAM NUBEX BLONDE | |
| 0.62 | 0040883000 | CLOTH GRILLE OXBLOOD | |
| 4 | 0021972000 | NUT T 10-32x3/4 STR 3 PRNG BLX | |

| PARTS LIST: | | END ITEM ASSEMBLY – BLACK | |
|-------------|------------|----------------------------------|------------------------|
| QTY. | PART # | DESCRIPTION | REFERENCE DESIGNATION |
| 1 | 0079527000 | SPKR 12 INCH 8 OHM STL CER | |
| 4 | 0026577000 | SCRW M 10-32x1 PHP BLX | AT SPEAKER |
| 1 | 0064063000 | REVERB UNIT 4 SPRING 4AB3C1B | |
| 1 | 0031849000 | REVERB BAG | |
| 1 | 0028453000 | PAD CARDBOARD REVERB | |
| 1 | 0025722000 | CABLE REVERB 1100mm | |
| 3 | 0022491000 | CLAMP CABLE NYL SCRW MNT | AT REVERB & SPKR CABLE |
| 1 | 0028044000 | CABLE ASSY SPKR RT ANG 33" | SPEAKER CABLE |
| 2 | 0024745000 | STRAP CHASSIS 4" NI | CHASSIS MOUNT |
| 4 | 0022236000 | SCRW M 8-32x3-1/4 OHP NI CONE | CHASSIS MOUNT |

* Non-serviceable part. Replace complete parent assembly. See PCB EXCHANGE POLICY section above.

shaded Unique Fender® part. Order directly from the FMIC Parts Department.

shaded + * Access to this part or assembly is controlled. Please contact the FMIC Customer Service Department.

** Safety Requirement part. Replacement must match Safety Agency...–Value, if specified –Type, if specified –Approval Mark(s) if on part.

shaded + ** Both a unique Fender® part and a Safety Requirement part as defined above.



SUPER-SONIC™22

(This is the model name for warranty claims)

| PARTS LIST: | | END ITEM ASSEMBLY – BLACK | |
|-------------|------------|----------------------------------|---------------------------|
| QTY. | PART # | DESCRIPTION | REFERENCE DESIGNATION |
| 2 | 0022327000 | WSHR FLAT 8x7/16 NI | AT REVERB BAG |
| 8 | 0029828000 | SCRW PB 8x3/4 PHP ZI | REVERB BAG/CHASSIS/CLAMPS |
| 4 | 0026201000 | GROMMET RUBBER | AT REVERB UNIT |
| 1 | 0047600000 | *NAMEPLATE 63 FENDER BLACK | |
| 3 | 0051621000 | SCRW SMA 2X9-16 FHP NI | AT NAMEPLATE |
| 8 | 0037952000 | SCRW SMA 6x1 OHP NI | AT CABINET BACKS |
| 8 | 0037215000 | WSHR C'SNK #6 NI | AT CABINET BACKS |
| 1 | 0047248000 | **CORD PWR w/IEC CONN DOM | |
| 1 | 0047251000 | **CORD PWR w/IEC CONN 230V | |
| 1 | 0047249000 | **CORD PWR w/IEC CONN 230V UK | |
| 1 | 0047250000 | **CORD PWR w/IEC CONN 250V | |
| 1 | 0053997000 | **CORD PWR w/IEC CONN 100V JPN | |
| 1 | 0057674000 | **CORD PWR w/IEC 230V ARG | |
| 1 | 0079278000 | COVER TUBE SUPER-SONIC 22 | |
| 2 | 0025743000 | SCRW M 10-32x1/2 THP BLK | AT TUBE COVER |
| 1 | 0047483000 | COVER 65 DELUXE REVERB | |

| PARTS LIST: | | END ITEM ASSEMBLY – BLONDE | |
|-------------|------------|-----------------------------------|---------------------------|
| QTY. | PART # | DESCRIPTION | REFERENCE DESIGNATION |
| 1 | 0079527000 | SPKR 12 INCH 8 OHM STL CER | |
| 4 | 0026577000 | SCRW M 10-32x1 PHP BLX | AT SPEAKER |
| 1 | 0064063000 | REVERB UNIT 4 SPRING 4AB3C1B | |
| 1 | 0031849000 | REVERB BAG | |
| 1 | 0028453000 | PAD CARDBOARD REVERB | |
| 1 | 0025722000 | CABLE REVERB 1100mm | |
| 3 | 0022491000 | CLAMP CABLE NYL SCRW MNT | AT REVERB & SPKR CABLE |
| 1 | 0028044000 | CABLE ASSY SPKR RT ANG 33" | SPEAKER CABLE |
| 2 | 0024745000 | STRAP CHASSIS 4" NI | CHASSIS MOUNT |
| 4 | 0022236000 | SCRW M 8-32x3-1/4 OHP NI CONE | CHASSIS MOUNT |
| 2 | 0022327000 | WSHR FLAT 8x7/16 NI | AT REVERB BAG |
| 8 | 0029828000 | SCRW PB 8x3/4 PHP ZI | REVERB BAG/CHASSIS/CLAMPS |
| 4 | 0026201000 | GROMMET RUBBER | AT REVERB UNIT |
| 1 | 0036795000 | *NAMEPLATE 63 FENDER BRN | NAMEPLATE |
| 3 | 0051621000 | SCRW SMA 2X9-16 FHP NI | AT NAMEPLATE |
| 8 | 0037952000 | SCRW SMA 6x1 OHP NI | AT CABINET BACKS |
| 8 | 0037215000 | WSHR C'SNK #6 NI | AT CABINET BACKS |
| 1 | 0047248000 | **CORD PWR w/IEC CONN DOM | |
| 1 | 0047251000 | **CORD PWR w/IEC CONN 230V | |
| 1 | 0047249000 | **CORD PWR w/IEC CONN 230V UK | |
| 1 | 0047250000 | **CORD PWR w/IEC CONN 250V | |
| 1 | 0053997000 | **CORD PWR w/IEC CONN 100V JPN | |
| 1 | 0057674000 | **CORD PWR w/IEC 230V ARG | |
| 1 | 0079278000 | COVER TUBE SUPER-SONIC 22 | |
| 2 | 0025743000 | SCRW M 10-32x1/2 THP BLK | AT TUBE COVER |
| 1 | 0047483000 | COVER 65 DELUXE REVERB | |

* Non-serviceable part. Replace complete parent assembly. See PCB EXCHANGE POLICY section above.

shaded Unique Fender® part. Order directly from the FMIC Parts Department.

shaded + * Access to this part or assembly is controlled. Please contact the FMIC Customer Service Department.

** Safety Requirement part. Replacement must match Safety Agency...–Value, if specified –Type, if specified –Approval Mark(s) if on part.

shaded + ** Both a unique Fender® part and a Safety Requirement part as defined above.



SUPER-SONIC™22

(This is the model name for warranty claims)

| PARTS LIST: | | FOOTSWITCH ASSY | |
|-------------|------------|---------------------------------|-----------------------|
| QTY. | PART # | DESCRIPTION | REFERENCE DESIGNATION |
| 1 | 0078324000 | COMPLETE FOOTSWITCH ASSY | |
| 1 | 0071225000 | CABLE 7 PIN DIN 25 FT (N.S.) | FOOTSWITCH CABLE |
| 1 | * | END CAP FTSW 2004 LEFT SIDE | |
| 1 | * | END CAP FTSW DIN RIGHT SIDE | |
| 8 | * | SCRW SMB 6x3/8 PH PHS BLX | |
| 1 | * | NUT HEX 12mmx1mm NI | |
| 3 | * | WSHR NYL .485x.775x.150 TK | |
| 1 | * | HOUSING FTSW 4 BUTTON 2004 | |
| 1 | * | PLATE FOOTSWITCH SUPER-SONIC 22 | |
| 1 | * | PCB ASSY FTSW SUPER-SONIC 22 | |
| 4 | * | RES CF 1/4W 5% 100ohm LL | R1-3 R5 |
| 1 | * | RES CF 1/4W 5% 10k LL | R4 |
| 4 | * | LED RED 5x5mm SLB-55VR3 | D1-4 |
| 4 | * | SWITCH PUSH SPDT | S1-4 |
| 1 | * | CONNECTOR FEMALE 7 PIN DIN | J1 |
| 1 | * | SPACER RND NYL .680x.250x.147 | |

* Non-serviceable part. Replace complete parent assembly. See PCB EXCHANGE POLICY section above.

shaded Unique Fender® part. Order directly from the FMIC Parts Department.

shaded + * Access to this part or assembly is controlled. Please contact the FMIC Customer Service Department.

** Safety Requirement part. Replacement must match Safety Agency...-Value, if specified -Type, if specified -Approval Mark(s) if on part.

shaded + ** Both a unique Fender® part and a Safety Requirement part as defined above.



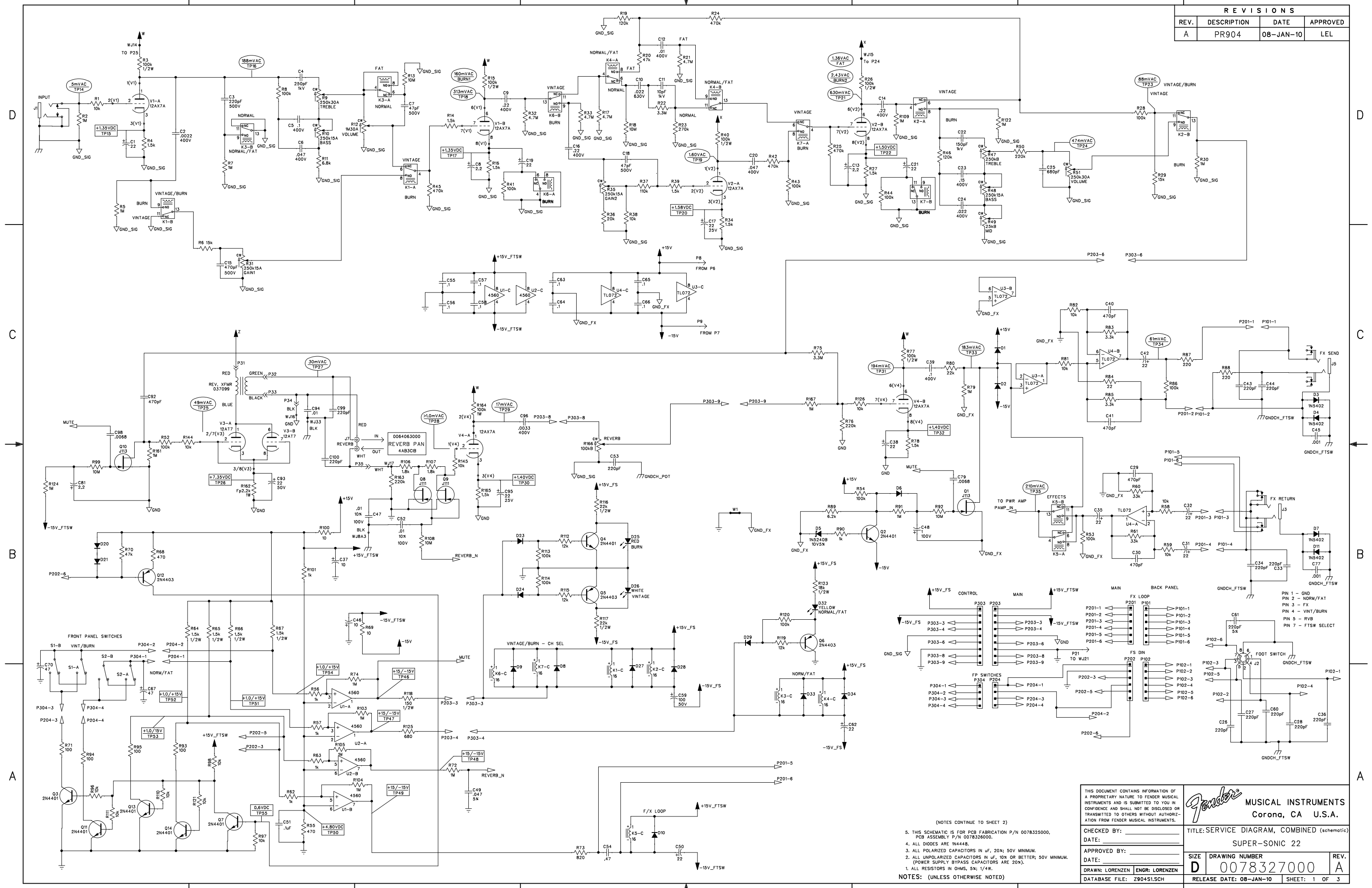
SUPER-SONIC™22

(This is the model name for warranty claims)

Service Diagram List

| | |
|--------------------------------------|---|
| Service Diagram (Schematic) | Super-Sonic 22 Amplifier |
| Service Diagram (PCB Assembly) | Super-Sonic 22 Amplifier |
| Chassis Assembly | Super-Sonic 22 Amplifier |
| End Item Assembly | Super-Sonic 22 Amplifier |
| Assembly | 4-Button Footswitch Super-Sonic22 Amplifier |

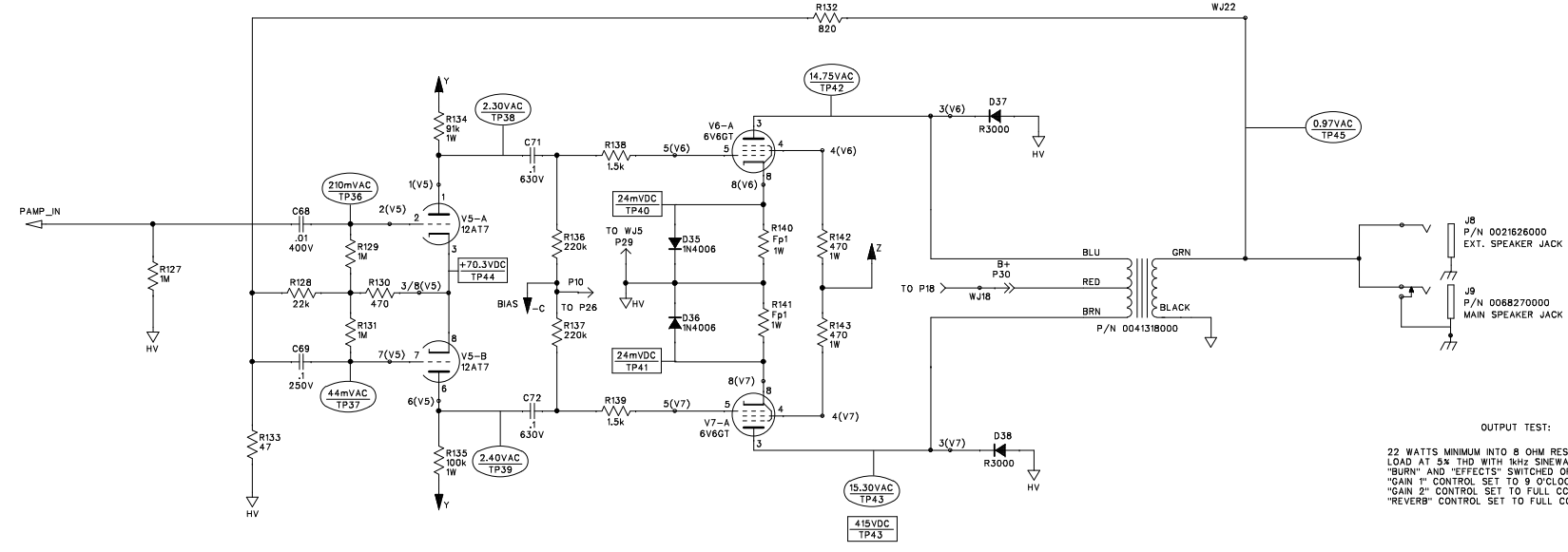
| REVISIONS | | | |
|-----------|-------------|-----------|----------|
| REV. | DESCRIPTION | DATE | APPROVED |
| A | PR904 | 08-JAN-10 | LEL |



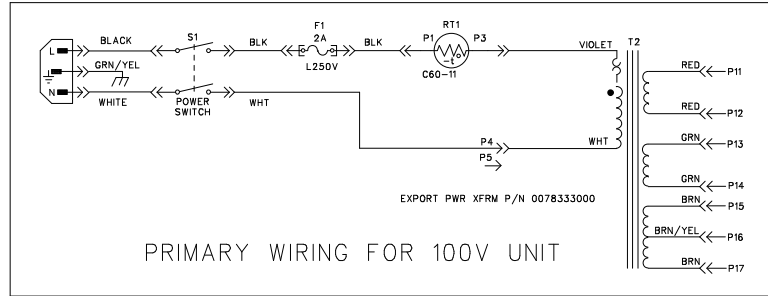
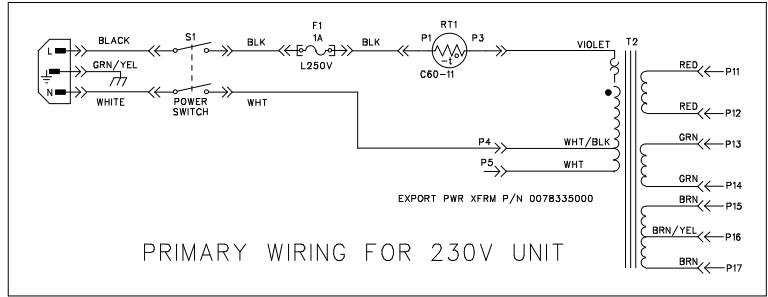
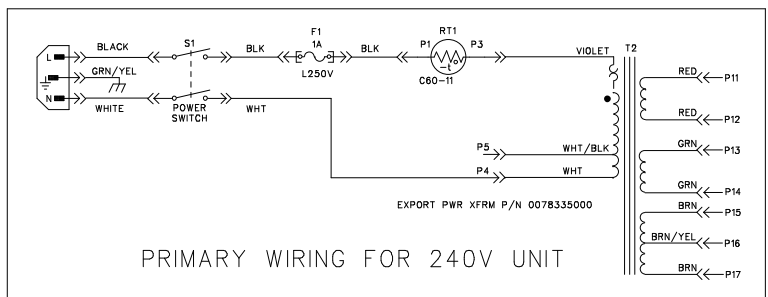
- (NOTES CONTINUE TO SHEET 2)
- THIS SCHEMATIC IS FOR PCB FABRICATION P/N 0078325000, PCB ASSEMBLY P/N 0078326000.
 - ALL DIODES ARE 1N4148.
 - ALL POLARIZED CAPACITORS IN U.F., 20%; 50V MINIMUM.
 - ALL UNPOLARIZED CAPACITORS IN U.F., 10% OR BETTER; 50V MINIMUM. (POWER SUPPLY BYPASS CAPACITORS ARE 20%).
 - ALL RESISTORS IN OHMS, 5%; 1/4W.
- NOTES: (UNLESS OTHERWISE NOTED)

| | | | |
|---|-------------------------|--|----------------------------|
| THIS DOCUMENT CONTAINS INFORMATION OF A PROPRIETARY NATURE TO FENDER MUSICAL INSTRUMENTS AND IS SUBMITTED TO YOU IN CONFIDENCE AND SHALL NOT BE DISCLOSED OR TRANSMITTED TO OTHERS WITHOUT AUTHORIZATION FROM FENDER MUSICAL INSTRUMENTS. | | Fender MUSICAL INSTRUMENTS Corona, CA U.S.A. | |
| CHECKED BY: _____ | DATE: _____ | TITLE: SERVICE DIAGRAM, COMBINED (schematic) | |
| APPROVED BY: _____ | DATE: _____ | SUPER-SONIC 22 | |
| DRAWN: LORENZEN | ENGR: LORENZEN | SIZE: D | DRAWING NUMBER: 0078327000 |
| DATABASE FILE: Z904S1.SCH | RELEASE DATE: 08-JAN-10 | SHEET: 1 OF 3 | REV. A |

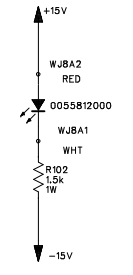
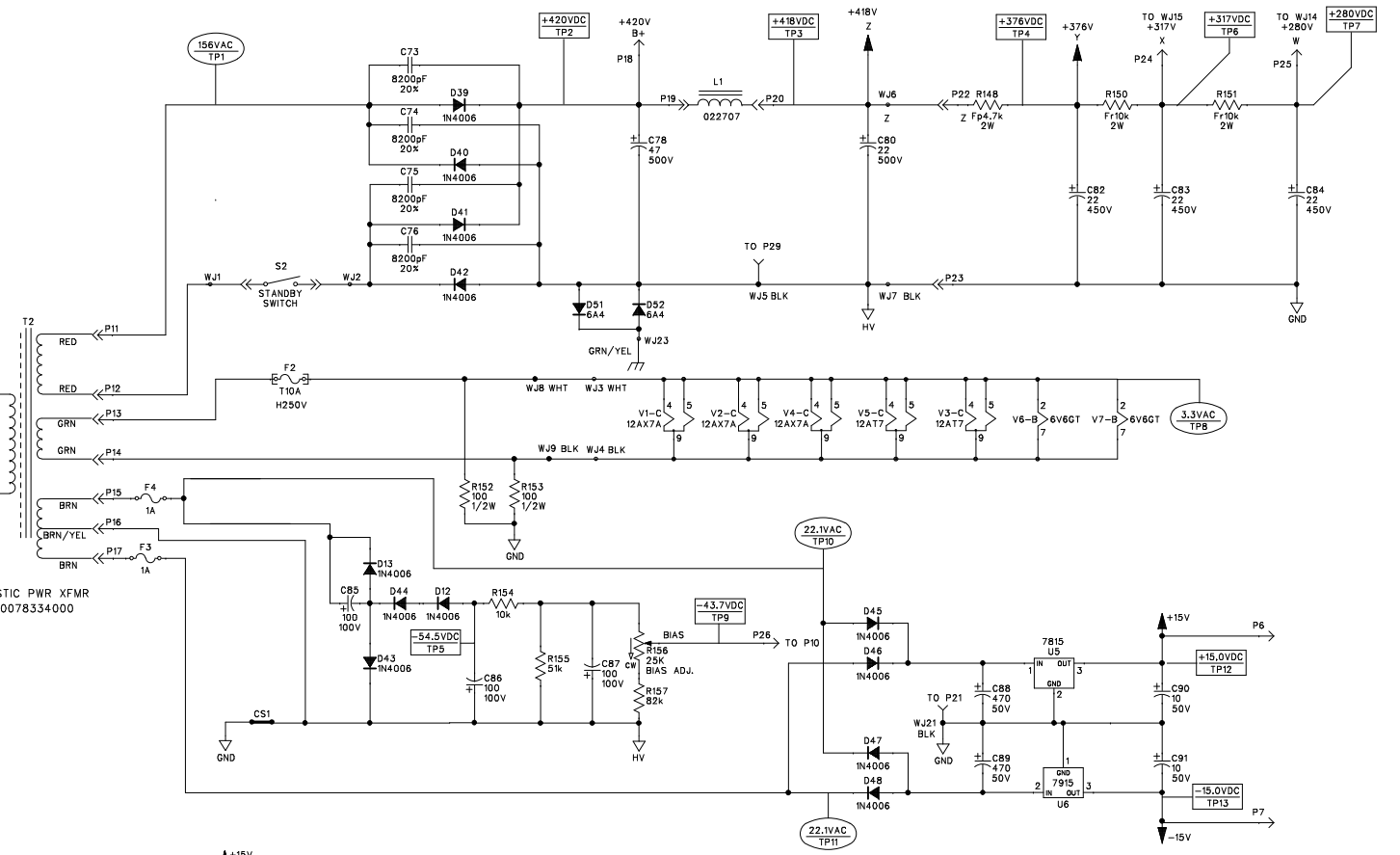
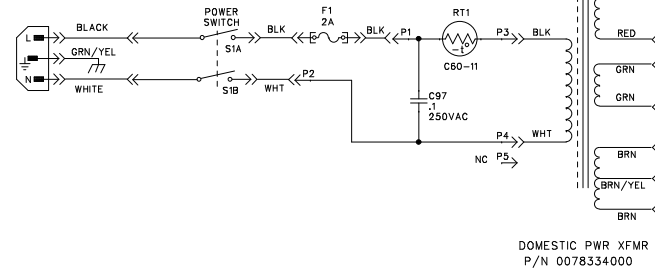
| REVISIONS | | | |
|-----------|-------------|-----------|----------|
| REV. | DESCRIPTION | DATE | APPROVED |
| A | PR904 | 08-JAN-10 | LEL |



OUTPUT TEST:
 22 WATTS MINIMUM INTO 8 OHM RESISTIVE LOAD AT 5% THD WITH 1kHz SINEWAVE INPUT AT J1
 BURN AND *EFFECTS* SWITCHED OFF ON FOOTSWITCH
 GAIN 1 CONTROL SET TO 9 O'CLOCK POSITION
 GAIN 2 CONTROL SET TO FULL CCW POSITION
 REVERB CONTROL SET TO FULL CCW POSITION



| VOLTAGE | F1 RATING |
|----------|-----------|
| 100-120V | F2A L250V |
| 220-240V | F1A L250V |



6. ALL VOLTAGES MEASURED WITH RESPECT TO GROUND USING A DVM OF AT LEAST 1M Ω AC INPUT IMPEDANCE AND 10M Ω DC IMPEDANCE. VOLTAGE MAY VARY +/- 20%.

INITIAL TEST CONDITIONS:
 UNIT AT RATED LINE VOLTAGE
 ALL PCBs ARE CONNECTED TOGETHER, INSTALLED IN THE CHASSIS
 REVERB PAN 0064083000 CONNECTED AT J7
 8Ω RESISTIVE LOAD CONNECTED TO J9

BURN SWITCHED OFF, *EFFECTS* SWITCHED ON WHEN USING FOOTSWITCH
 GAIN 1 CONTROL SET TO 9 O'CLOCK POSITION
 GAIN 2 CONTROL SET TO FULL CCW POSITION
 REVERB CONTROL SET TO FULL CCW POSITION

ALL OTHER CONTROLS SET TO 12 O'CLOCK POSITION
 BIAS CONTROL R156 SET TO -43.7VDC (OR 24mV AT BOTH TP40 AND TP41)
 ALL DC VOLTAGE MEASURED WITH NO INPUT SIGNAL
 ALL AC VOLTAGES MEASURED WITH 5mV, 1kHz SINEWAVE INPUT SIGNAL AT J1

ADDITIONAL TEST CONDITIONS:
 TP18,19 and 21, *BURN* SHOULD BE SWITCHED ON.
 TP21, *FAT* SHOULD BE SWITCHED ON.
 TP31 SET *REVERB* CONTROL TO 12 O'CLOCK.

| | | | |
|---|----------------|--|----------------|
| THIS DOCUMENT CONTAINS INFORMATION OF A PROPRIETARY NATURE TO FENDER MUSICAL INSTRUMENTS AND IS SUBMITTED TO YOU IN CONFIDENCE AND SHALL NOT BE DISCLOSED OR TRANSMITTED TO OTHERS WITHOUT AUTHORIZATION FROM FENDER MUSICAL INSTRUMENTS. | | MUSICAL INSTRUMENTS Corona, CA U.S.A. | |
| CHECKED BY: | | TITLE: SERVICE DIAGRAM, COMBINED (schematic) | |
| DATE: | | SUPER-SONIC 22 | |
| APPROVED BY: | | SIZE | DRAWING NUMBER |
| DATE: | | D | 0078327000 |
| DRAWN: LORENZEN | ENGR: LORENZEN | RELEASE DATE: 08-JAN-10 | SHEET: 2 OF 3 |
| DATABASE FILE: Z90451.SCH | | | |

NOTES: (CONT. FROM SHEET 1)

8

7

6

5

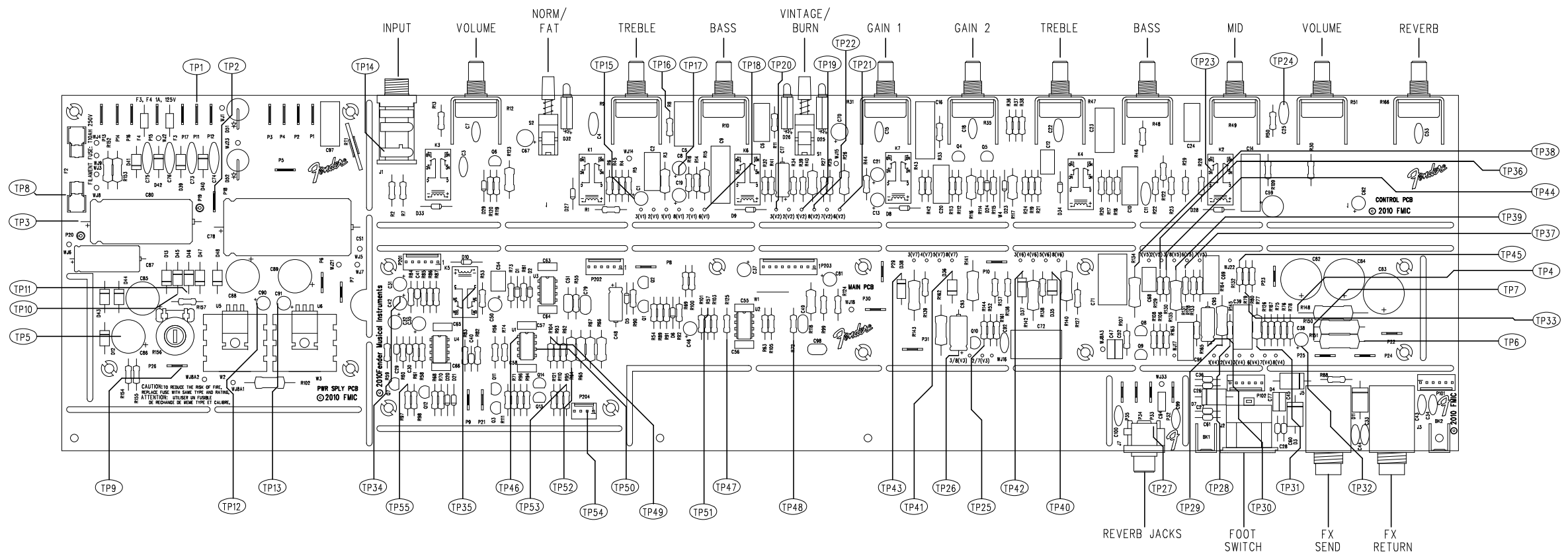
4

3

2

1

| REVISIONS | | | |
|-----------|-------------|-----------|----------|
| REV. | DESCRIPTION | DATE | APPROVED |
| A | PR904 | 08-JAN-10 | LEL |



FILM/DWG: SERVICE DIAGRAM
 DATABASE: Z904P1PCB DATE: 08-JAN-10

1. SEE SHEET 1-2 OF 3 FOR TEST CONDITIONS AND TEST POINT VALUES.

NOTES: (UNLESS OTHERWISE NOTED)

| | | | |
|---|-------------------|--|----------------------------|
| THIS DOCUMENT CONTAINS INFORMATION OF A PROPRIETARY NATURE TO FENDER MUSICAL INSTRUMENTS AND IS SUBMITTED TO YOU IN CONFIDENCE AND SHALL NOT BE DISCLOSED OR TRANSMITTED TO OTHERS WITHOUT AUTHORIZATION FROM FENDER MUSICAL INSTRUMENTS. | | MUSICAL INSTRUMENTS Corona, CA U.S.A. | |
| CHECKED BY: | DATE: | TITLE: SERVICE DIAGRAM, COMBINED (schematic) SUPER-SONIC 22 | |
| APPROVED BY: | DATE: | SIZE: D | DRAWING NUMBER: 0078327000 |
| DRAWN: HAN LE | ENGR: L. LORENZEN | RELEASE DATE: 08-JAN-10 | SHEET 3 OF 3 |
| DATABASE FILE: Z904P1PCB | | | REV. A |

D

C

B

A

D

C

B

A

8

7

6

5

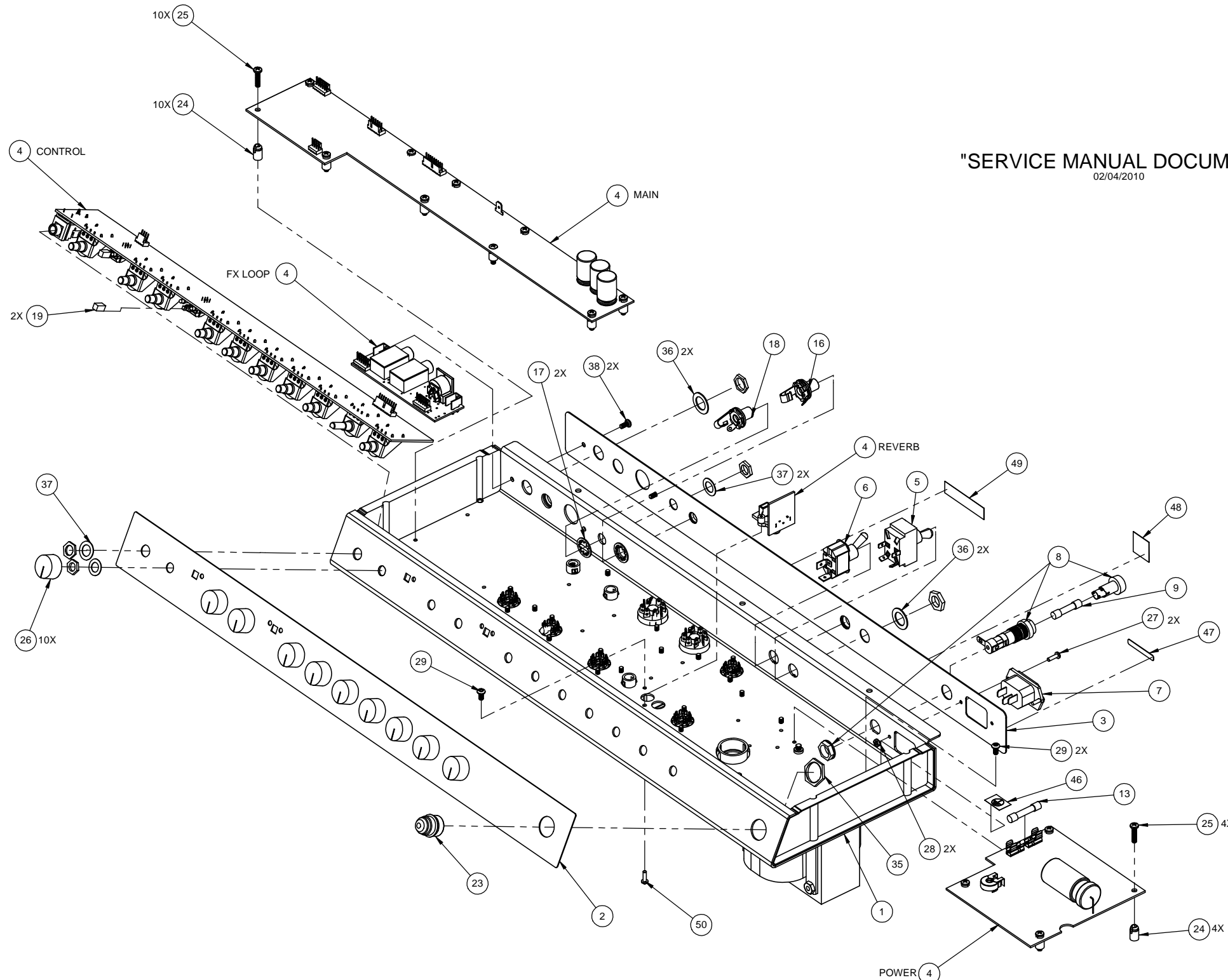
4

3

2

1

THIS DOCUMENT CONTAINS INFORMATION OF A PROPRIETARY NATURE TO FENDER MUSICAL INSTRUMENTS AND IS SUBMITTED TO YOU IN CONFIDENCE AND SHALL NOT BE DISCLOSED OR TRANSMITTED TO OTHERS WITHOUT AUTHORIZATION FROM FENDER MUSICAL INSTRUMENTS CORP.



"SERVICE MANUAL DOCUMENT"
02/04/2010

| ITEM | QTY | DESCRIPTION |
|------|-----|--|
| 50 | 1 | SCRW SMB #4X3/8 PHP BLX |
| 49 | 1 | LABEL PSE JPN SAFETY CAUTION AND ICONS |
| 48 | 1 | LABEL PSE JPN (YAMANO) |
| 47 | 1 | LABEL VOLTAGE |
| 46 | 1 | LABEL GROUNDING SEMKO |
| 45 | 2 | TUBE 7025/12AX7A 12AX7B UNMARKED |
| 44 | 1 | WIRE SET CHS SUPER-SONIC 22 (N.S.) |
| 43 | 4 | SCRW M 8-32x3/8 PHP BLXSEM/LW |
| 41 | 2 | CABLE ASSY RIBBON 6CKT 2-1/2" (N.S.) |
| 40 | 1 | CABLE RIBBON ASSY 9CKT 14" (N.S.) |
| 39 | 1 | CABLE RIBBON ASSY 4CKT 2.5" (N.S.) |
| 38 | 2 | SCRW M 6-32x1/4 PHP BLX |
| 37 | 3 | WSHR FLAT 3/8x.614 NI |
| 36 | 4 | WSHR FLAT .473x.750 NI SELL 049 |
| 35 | 1 | NUT HOLDER PILOT LIGHT 11/16-27 |
| 34 | 1 | TUBE 7025/12AX7A 12AX7WC GT-12AX7-R |
| 33 | 2 | TUBE 12AT7 GT-12AT7 |
| 32 | 5 | TUBE SHIELD (099-0723-000) |
| 31 | 2 | TUBE 6V6GTA 6V6S GT-6V6-S |
| 30 | 2 | TUBE RING UNIVERSAL (277H-2) |
| 29 | 23 | SCRW TF 6-32X1/4 PHP ZI |
| 28 | 2 | NUT HEX 4-40 EX LOCK |
| 27 | 2 | SCRW M 4-40x3/8 PHP BLX |
| 26 | 10 | KNOB VINTAGE CREAM |
| 25 | 14 | SCRW TF 6-32x5/8 PHP ZI |
| 24 | 14 | STANDOFF NYL PCB SNAP 3/8 |
| 23 | 1 | JEWEL ASSY LED |
| 22 | 1 | XFMR PWR SUPER-SONIC 22 |
| 21 | 3 | BUSHING SNAP 5/16x17/32 BLK |
| 20 | 1 | BUSHING SNAP 3/4x1-1/8 WHT |
| 19 | 2 | BUTTON PUSH IVORY |
| 18 | 1 | JACK PHONE 2/CD SOC L11 3/8" L |
| 17 | 2 | WSHR LCK INTL 3/8x.687x.065 NI |
| 16 | 1 | JACK PHONE TIP SHUNT L12A |
| 15 | 1 | XFMR REVERB VIBROVERB/65 DLX |
| 14 | 1 | CHOKE FILTER |
| 13 | 1 | FUSE TD 1-1/4x1/4 250v 10A |
| 12 | 5 | TUBE SOCKET 9 PIN |
| 11 | 2 | TUBE SCKT 8 PN (099-0724-000) |
| 10 | 1 | XFMR OUTPUT 65 DELUXE REVERB |
| 9 | 1 | FUSE |
| 8 | 1 | FUSE HOLDER |
| 7 | 1 | CONNECTOR AC LINE MALE IEC |
| 6 | 1 | SWITCH TOGGLE SPST W/NUTS |
| 5 | 1 | SWITCH TOGGLE DPST W/NUTS |
| 4 | 1 | PCB ASSY SUPER-SONIC 22 |
| 3 | 1 | PANEL REAR SUPER-SONIC 22 |
| 2 | 1 | PANEL FRONT SUPER-SONIC 22 |
| 1 | 1 | CHASSIS SUPER-SONIC 22 |

| ITEM | FROM | TO |
|------|------|------|
| 44 | P101 | P201 |
| 44 | P102 | P202 |
| 42 | P204 | P304 |
| 43 | P203 | P303 |

| | | |
|------------------------|--|----------|
| MATERIAL N/A | GENERAL TOLERANCES UNLESS OTHERWISE SPECIFIED ENGLISH FRACT. ±1/32 X ±.050 XX ±.020 XXX ±.010 HOLE DIA. +.005 -0.01 METRIC X ±0.5 XX ±0.25 XXX ±0.130 HOLE DIA. +0.13 -0.03 ANGLES ANGLES ±0.5° UNMARKED ANGLES -90° DO NOT SCALE DRAWING | ENGINEER |
| FINISH N/A | | DRAWN |
| THIRD ANGLE PROJECTION | DATE 5/7/2009 | DATE |

| | | | |
|------------------------|---------------------------|--|----------|
| ENGINEER | | TITLE CHASSIS ASSEMBLY SUPER-SONIC 22 | |
| DATE 5/7/2009 | | REV A | |
| CHKD | S.M.E. (OPT) | MGR/DIR | P.E. |
| DATE | DATE | DATE | DATE |
| SIZE D | PART NUMBER 0078315000 | ASSEMBLY | REV A |
| FILE NAME: 0078315000A | SCALE: NONE | SHEET: 1 of 3 | |

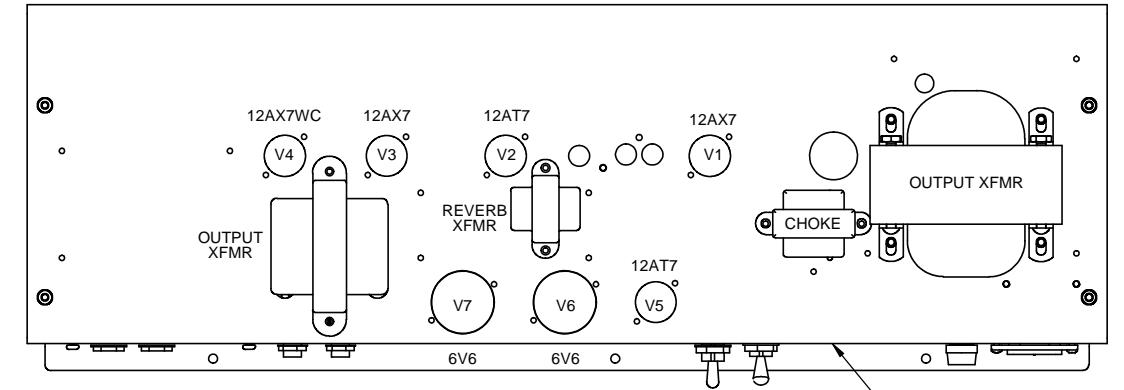
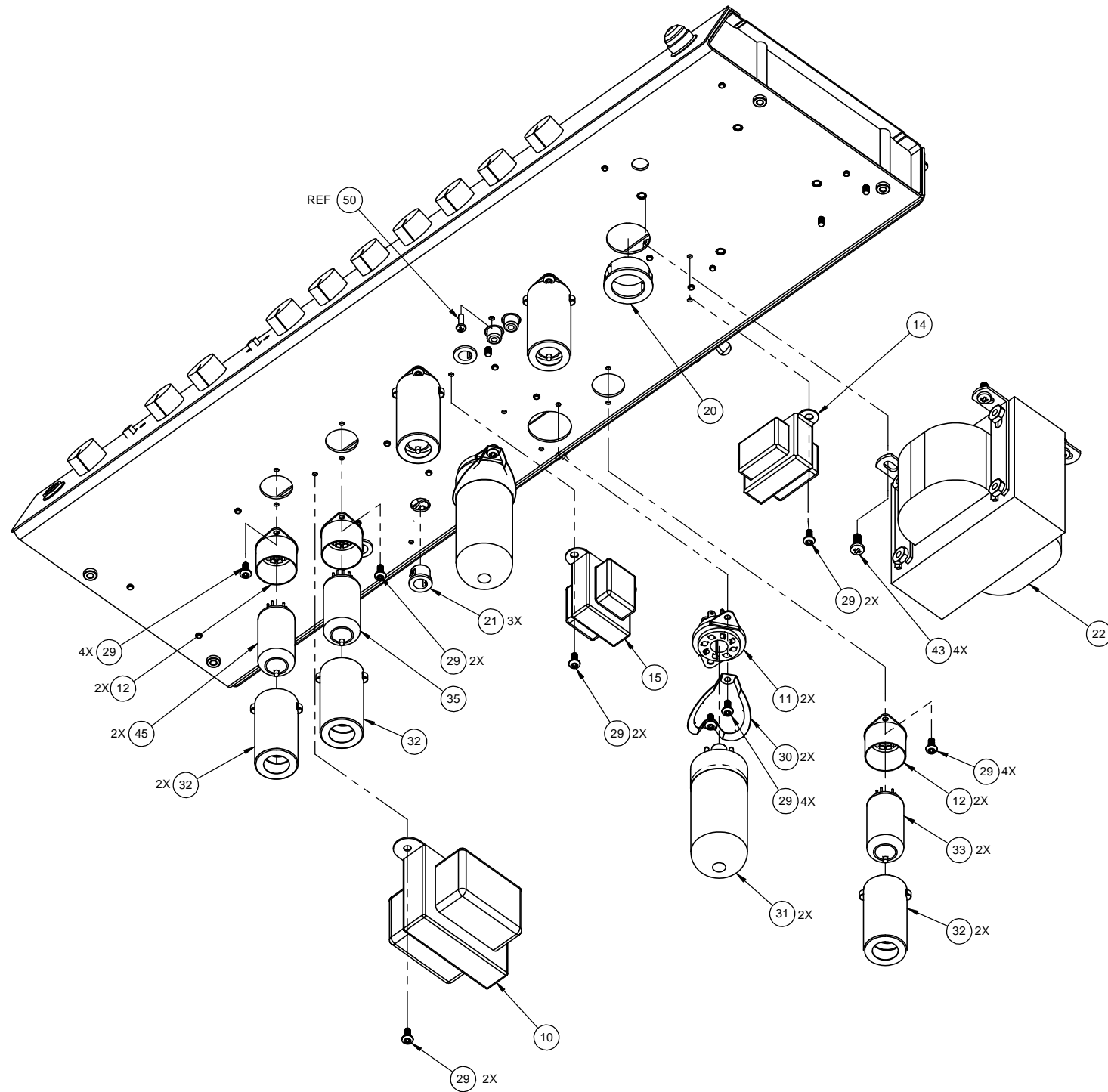


CHART A
VIEWED FROM BOTTOM OF CHASSIS
FOR TUBE INSERTION
SCALE: 1/2

TABLE B
120V & 110V POWER TRANSFORMER
WIRING INTERCONNECT AT CHASSIS ASSY

| WIRE COLOR | FROM | TO | CONNECTION TYPE |
|------------|---------|------------------------------------|-----------------|
| BK | ITEM 26 | ITEM 4 (PWR SUPPLY PCB) - P3 | FASTON |
| WHT | ITEM 26 | ITEM 4 (PWR SUPPLY PCB) - P4 | FASTON |
| RED (2X) | ITEM 26 | ITEM 4 (PWR SUPPLY PCB) - P11, P12 | FASTON |
| GRN (2X) | ITEM 26 | ITEM 4 (PWR SUPPLY PCB) - P13, P14 | FASTON |
| BRN (2X) | ITEM 26 | ITEM 4 (PWR SUPPLY PCB) - P15, P17 | FASTON |
| BRN/YEL | ITEM 26 | ITEM 4 (PWR SUPPLY PCB) - P16 | FASTON |

TABLE D
240V POWER TRANSFORMER
WIRING INTERCONNECT AT CHASSIS ASSY

| WIRE COLOR | FROM | TO | CONNECTION TYPE |
|------------|---------|------------------------------------|-----------------|
| VIOLET | ITEM 26 | ITEM 4 (PWR SUPPLY PCB) - P3 | FASTON |
| BK/RED | ITEM 26 | ITEM 4 (PWR SUPPLY PCB) - P5 | FASTON |
| BK/GRN | ITEM 26 | ITEM 4 (PWR SUPPLY PCB) - P7 | FASTON |
| BK/YEL | ITEM 26 | ITEM 4 (PWR SUPPLY PCB) - P8 | FASTON |
| WHT | ITEM 26 | ITEM 4 (PWR SUPPLY PCB) - P9 | FASTON |
| WHT/BK | ITEM 26 | ITEM 4 (PWR SUPPLY PCB) - P10 | FASTON |
| BK | ITEM 26 | ITEM 4 (PWR SUPPLY PCB) - P4 | FASTON |
| RED (2X) | ITEM 26 | ITEM 4 (PWR SUPPLY PCB) - P11, P12 | FASTON |
| GRN (2X) | ITEM 26 | ITEM 4 (PWR SUPPLY PCB) - P13, P14 | FASTON |
| BRN (2X) | ITEM 26 | ITEM 4 (PWR SUPPLY PCB) - P15, P17 | FASTON |
| BRN/YEL | ITEM 26 | ITEM 4 (PWR SUPPLY PCB) - P16 | FASTON |

TABLE C
230V & 220V POWER TRANSFORMER
WIRING INTERCONNECT AT CHASSIS ASSY

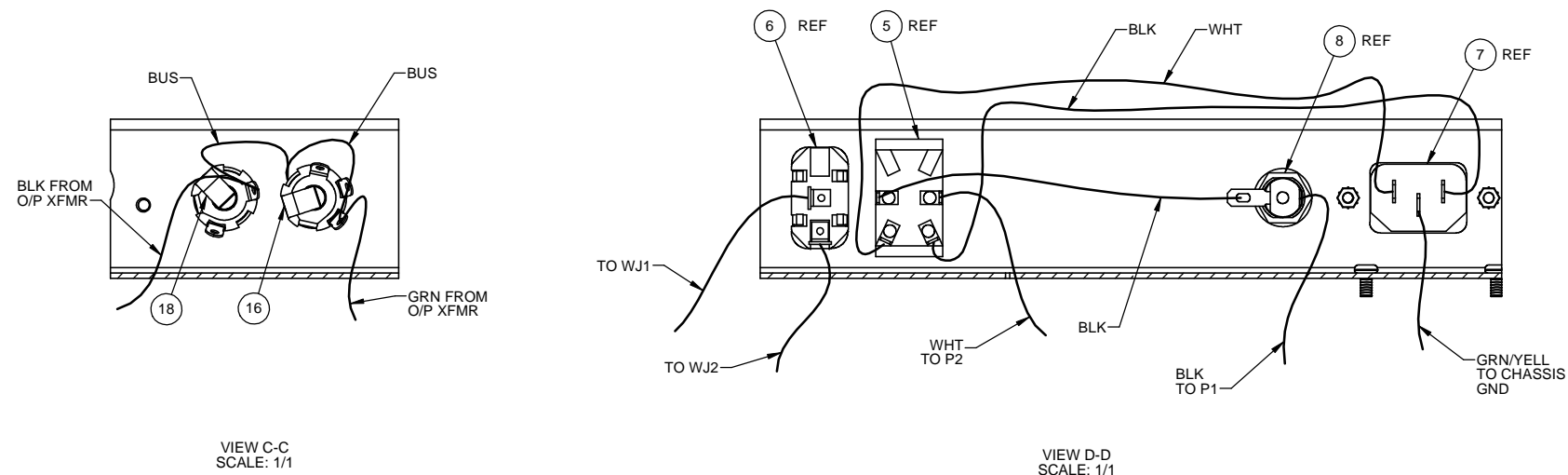
| WIRE COLOR | FROM | TO | CONNECTION TYPE |
|------------|---------|------------------------------------|-----------------|
| VIOLET | ITEM 26 | ITEM 4 (PWR SUPPLY PCB) - P3 | FASTON |
| BK/RED | ITEM 26 | ITEM 4 (PWR SUPPLY PCB) - P5 | FASTON |
| BK/GRN | ITEM 26 | ITEM 4 (PWR SUPPLY PCB) - P7 | FASTON |
| BK/YEL | ITEM 26 | ITEM 4 (PWR SUPPLY PCB) - P8 | FASTON |
| WHT | ITEM 26 | ITEM 4 (PWR SUPPLY PCB) - P9 | FASTON |
| WHT/BK | ITEM 26 | ITEM 4 (PWR SUPPLY PCB) - P4 | FASTON |
| BK | ITEM 26 | ITEM 4 (PWR SUPPLY PCB) - P10 | FASTON |
| RED (2X) | ITEM 26 | ITEM 4 (PWR SUPPLY PCB) - P11, P12 | FASTON |
| GRN (2X) | ITEM 26 | ITEM 4 (PWR SUPPLY PCB) - P13, P14 | FASTON |
| BRN (2X) | ITEM 26 | ITEM 4 (PWR SUPPLY PCB) - P15, P17 | FASTON |
| BRN/YEL | ITEM 26 | ITEM 4 (PWR SUPPLY PCB) - P16 | FASTON |

TABLE E
100V POWER TRANSFORMER
WIRING INTERCONNECT AT CHASSIS ASSY

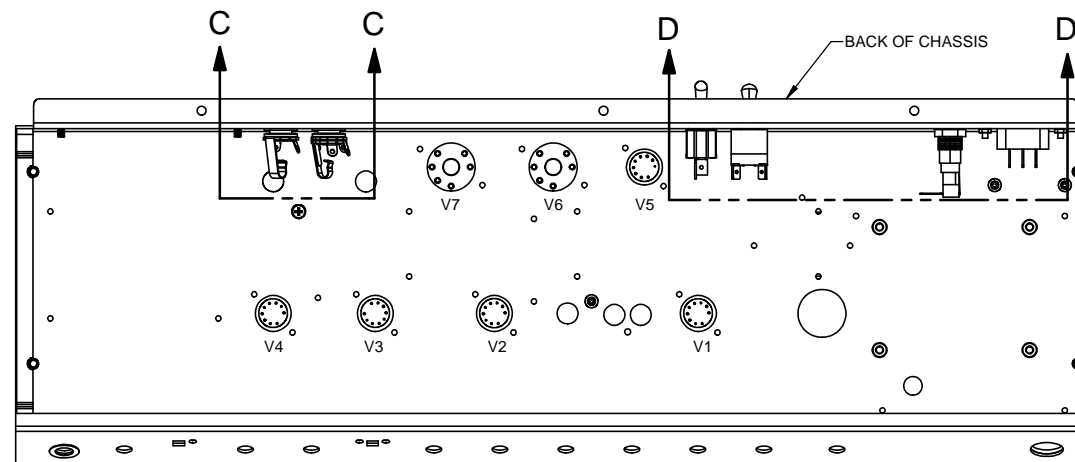
| WIRE COLOR | FROM | TO | CONNECTION TYPE |
|------------|---------|------------------------------------|-----------------|
| VIOLET | ITEM 26 | ITEM 4 (PWR SUPPLY PCB) - P3 | FASTON |
| BK/RED | ITEM 26 | ITEM 4 (PWR SUPPLY PCB) - P5 | FASTON |
| BK/GRN | ITEM 26 | ITEM 4 (PWR SUPPLY PCB) - P7 | FASTON |
| BK/YEL | ITEM 26 | ITEM 4 (PWR SUPPLY PCB) - P6 | FASTON |
| WHT | ITEM 26 | ITEM 4 (PWR SUPPLY PCB) - P4 | FASTON |
| WHT/BK | ITEM 26 | ITEM 4 (PWR SUPPLY PCB) - P9 | FASTON |
| BK | ITEM 26 | ITEM 4 (PWR SUPPLY PCB) - P8 | FASTON |
| RED (2X) | ITEM 26 | ITEM 4 (PWR SUPPLY PCB) - P11, P12 | FASTON |
| GRN (2X) | ITEM 26 | ITEM 4 (PWR SUPPLY PCB) - P13, P14 | FASTON |
| BRN (2X) | ITEM 26 | ITEM 4 (PWR SUPPLY PCB) - P15, P17 | FASTON |
| BRN/YEL | ITEM 26 | ITEM 4 (PWR SUPPLY PCB) - P16 | FASTON |

THIS DOCUMENT CONTAINS INFORMATION OF A PROPRIETARY NATURE TO FENDER MUSICAL INSTRUMENTS AND IS SUBMITTED TO YOU IN CONFIDENCE AND SHALL NOT BE DISCLOSED OR TRANSMITTED TO OTHERS WITHOUT AUTHORIZATION FROM FENDER MUSICAL INSTRUMENTS CORP.

| ITEM LETTER | CONNECTION REFERENCE CHASSIS WIRESET 0078330000 (ITEM 46) |
|-------------|--|
| A | IEC GND TO CHS GND |
| B | BLK WIRE - V1 PIN 9 TO V2 PIN 9 WHT WIRE - V1 PIN 4&5 TO V2 PINS 4&5 BLK WIRE - V2 PIN 9 TO V3 PIN 9 WHT WIRE - V2 PIN 4&5 TO V3 PIN 4&5 BLK WIRE - V5 PIN 9 TO V6 PIN 2 WHT WIRE - V5 PINS 4&5 TO V6 PIN 7 BLK WIRE - V6 PIN 2 TO V7 PIN 2 WHT WIRE - V6 PIN 7 TO V7 PIN 7 |
| C | BLK WIRE - V3 PIN 9 TO V4 PIN 9 WHT WIRE - V3 PINS 4&5 TO V4 PINS 4&5 |
| D | P6 TO P8 |
| E | P7 TO P9 |
| F | P10 TO P26 |
| G | AT P2 TO S1B-1 |
| H | IEC N TO S1B-2 |
| J | AT P1 TO F1 (FUSE) |
| K | IEC L TO S1A-1 |
| L | J8 TIP TO J9 TIP J8 GND AND SHUNT TO 9 GND |
| M | F2 (FUSE) TO S1A-2 |
| N | V3A(2) TO V3B(7) |
| P | V3A(3) TO V3B(8) V5A(3) TO V5B(8) |
| R | PIN 3 ON V5, V3 TO PIN 8 ON V5, V3 |

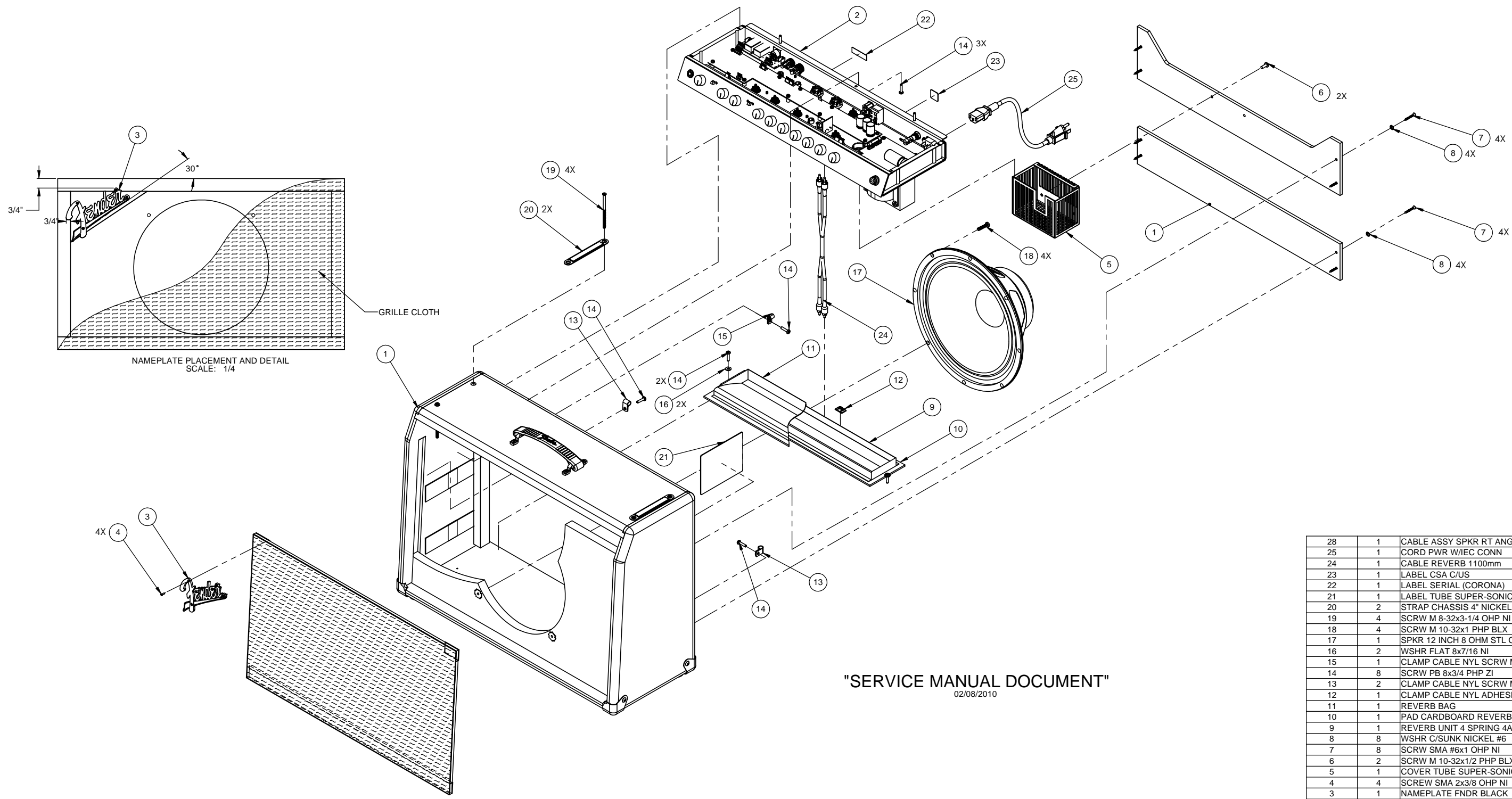


| ITEM LETTER | CONNECTION REFERENCE PCB WIRESET 0078332000 |
|-------------|--|
| A | PIN 8 AT V1,2,4,6,7 TO PCB PIN 8 AT V1,2,4,6,7 PINS 3&8 AT V3,5 TO PCB PIN 8 AT V1,2,4,6,7 PINS 3 & 8 AT V3,5 TO PCB PIN 3 AT V1,2,4,5 PIN 3 AT V1,2,4,5 AT PCB PIN 3 AT V1,2,4,5 |
| B | WJ8A3 TO CHS GND |
| C | WJ22 TO J9 TIP |
| D | PINS 2&7 AT V1,2,4,5 TO PIN 7 AT V3, PIN 5 AT V6,7 |
| E | WJ33 TO CHS GND |
| F | PIN1 & 6 AT V1,2,4,5 PIN AT V6,7 TO PCB PIN 1 & 6 AT V1,2,4,5 PIN 3 AT V6,7 |
| G | WJ23 TO CJS GND |
| H | PIN 4 AT V6,7 TO PCB V6 PIN 4, V7 PIN 4 |
| J | WJ17 TO P35 |
| K | WJ16 TO P34 |
| L | WJ7 TO P23 |
| M | WJ14 TO P25 |
| N | WJ15 TO P24 |
| P | WJ6 TO P22 |
| Q | WJ18 TO P18 |
| R | WJ21 TO P21 |
| S | WJ1 TO S2-1 |
| T | WJ2 TO S2-2 |
| U | WJ5 TO P29 |
| V | BLK WIRE - WJ4 TO V4 PIN 9 WHT WIRE - WJ3 TO V4 PINS 4 & 5 BLK WIRE - WJ9 TO V5 PIN 9 WHT WIRE - WJ8 TO V5 PIN 4 & 5 |



| | | | | |
|---|------------------|------------------------|---------------------------|--------------|
| FENDER MUSICAL INSTRUMENTS CORP. RESEARCH AND DEVELOPMENT CORONA, CALIFORNIA U.S.A. | DRAWN | SIZE D | PART NUMBER 0078315000 | REV A |
| COPYRIGHT -2009- FMIC | DATE 5/7/2009 | FILE NAME: 0078315000A | SCALE: NONE | SHEET 3 of 3 |

THIS DOCUMENT CONTAINS INFORMATION OF A PROPRIETARY NATURE TO FENDER MUSICAL INSTRUMENTS AND IS SUBMITTED TO YOU IN CONFIDENCE AND SHALL NOT BE DISCLOSED OR TRANSMITTED TO OTHERS WITHOUT AUTHORIZATION FROM FENDER MUSICAL INSTRUMENTS CORP.

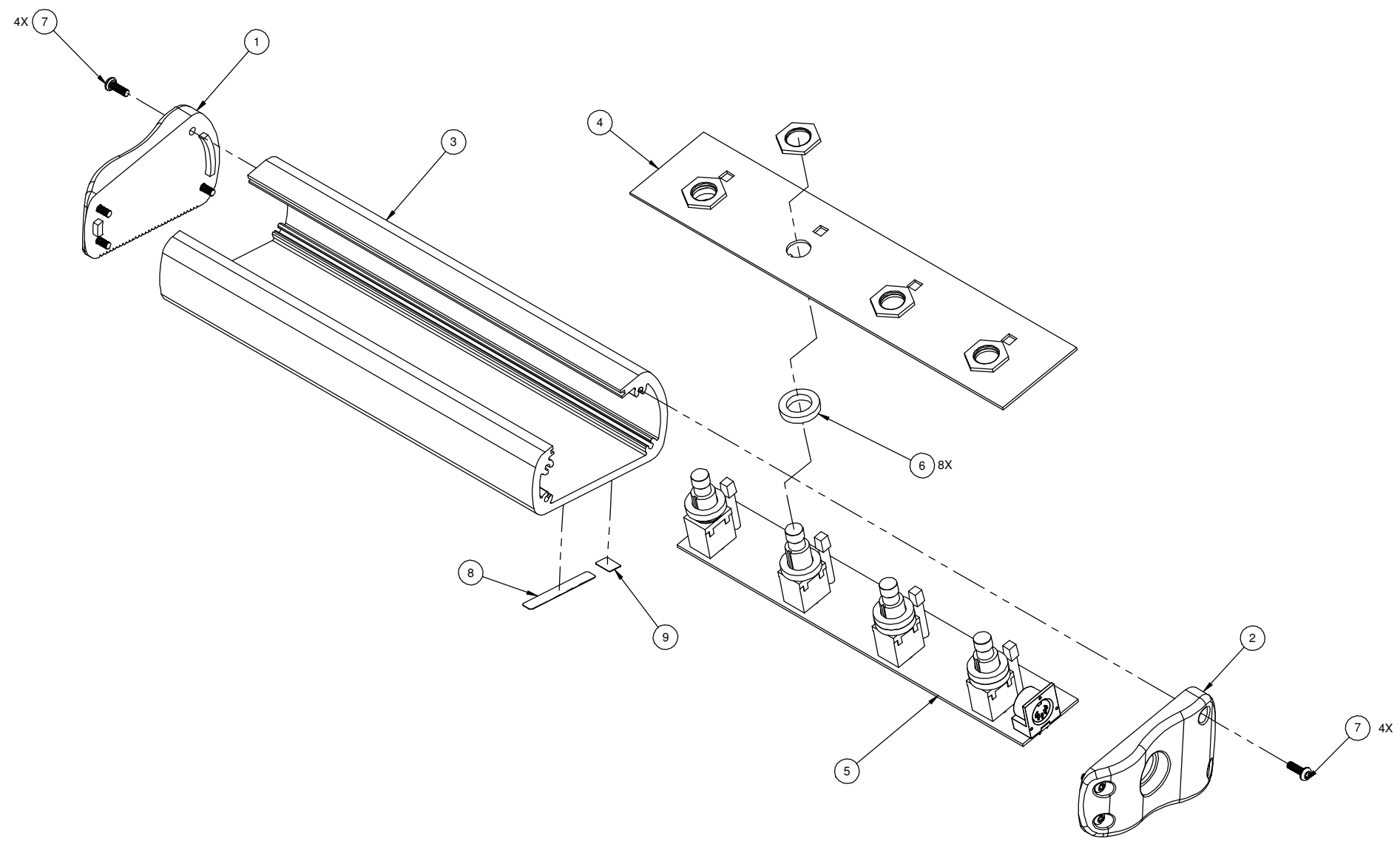


"SERVICE MANUAL DOCUMENT"
02/08/2010

| ITEM | QTY | DESCRIPTION |
|------|-----|-----------------------------------|
| 28 | 1 | CABLE ASSY SPKR RT ANG 33" (N.S.) |
| 25 | 1 | CORD PWR W/IEC CONN |
| 24 | 1 | CABLE REVERB 1100mm |
| 23 | 1 | LABEL CSA C/US |
| 22 | 1 | LABEL SERIAL (CORONA) |
| 21 | 1 | LABEL TUBE SUPER-SONIC 22 |
| 20 | 2 | STRAP CHASSIS 4" NICKEL |
| 19 | 4 | SCRW M 8-32x3-1/4 OHP NI CP |
| 18 | 4 | SCRW M 10-32x1 PHP BLX |
| 17 | 1 | SPKR 12 INCH 8 OHM STL CER |
| 16 | 2 | WSHR FLAT 8x7/16 NI |
| 15 | 1 | CLAMP CABLE NYL SCRW MNT 1/4 |
| 14 | 8 | SCRW PB 8x3/4 PHP ZI |
| 13 | 2 | CLAMP CABLE NYL SCRW MNT 5/16 |
| 12 | 1 | CLAMP CABLE NYL ADHESIVE |
| 11 | 1 | REVERB BAG |
| 10 | 1 | PAD CARDBOARD REVERB #12FN86 |
| 9 | 1 | REVERB UNIT 4 SPRING 4AB3C1B |
| 8 | 8 | WSHR C/SUNK NICKEL #6 |
| 7 | 8 | SCRW SMA #6x1 OHP NI |
| 6 | 2 | SCRW M 10-32x1/2 PHP BLX |
| 5 | 1 | COVER TUBE SUPER-SONIC 22 |
| 4 | 4 | SCREW SMA 2x3/8 OHP NI |
| 3 | 1 | NAMEPLATE FNDR BLACK |
| 2 | 1 | CHASSIS ASSEMBLY SUPER-SONIC 22 |
| 1 | 1 | CABINET ASSY SUPER-SONIC 22 BLK |

| | | | | | | | |
|-----------------|--------------|---|------|-------------|---------------|---|---|
| MATERIAL N/A | | GENERAL TOLERANCES UNLESS OTHERWISE SPECIFIED ENGLISH WOOD FRACT. ±1/32 X ±0.050 XX ±0.020 XXX ±0.010 HOLE DIA +.005 - .001 WOOD HOLE DIA ±0.005 METRIC X ±1 X ±0.5 XX ±0.130 HOLE DIA +0.13 -0.03 ANGLES ANGLES ±0.5° UNMARKED ANGLES --- 90° DO NOT SCALE DRAWING | | ENGINEER | | TITLE | |
| FINISH N/A | | THIRD ANGLE PROJECTION | | DRAWN | | FENDER MUSICAL INSTRUMENTS CORP. RESEARCH AND DEVELOPMENT CORONA, CALIFORNIA U.S.A. | |
| DATE | | 5-29-2009 | | DATE | | END ITEM ASSEMBLY SUPER-SONIC 22 BLACK | |
| CHKD | S.M.E. (OPT) | MGR/DIR | P.E. | SIZE | PART NUMBER | REV | |
| DATE | DATE | DATE | DATE | D | 2160000000 | MASTER/ASSEMBLY | A |
| FILE NAME: | | | | SCALE: NONE | SHEET: 1 of 1 | | |

THIS DOCUMENT CONTAINS INFORMATION OF A PROPRIETARY NATURE TO FENDER MUSICAL INSTRUMENTS AND IS SUBMITTED TO YOU IN CONFIDENCE AND SHALL NOT BE DISCLOSED OR TRANSMITTED TO OTHERS WITHOUT AUTHORIZATION FROM FENDER MUSICAL INSTRUMENTS CORP.



SERVICE MANUAL DOCUMENT
02/02/2010

(N.S.) = NOT SHOWN

| ITEM | QTY | DESCRIPTION |
|------|-----|--------------------------------|
| 9 | 1 | LABEL WEEE SYMBOL |
| 8 | 1 | LABEL "MADE IN MEXICO" |
| 7 | 8 | SCRW SMB 6x3/8 PH PHS BLX |
| 6 | 8 | WSHR NYL .485x.775x.150 TK |
| 5 | 1 | PCB ASSY FTSW 3 BTN DLX 90 DSP |
| 4 | 1 | PLATE TOP FTSW SUPER-SONIC 22 |
| 3 | 1 | HOUSING FTSW 4 BUTTON 2004 |
| 2 | 1 | END CAP FTSW DIN RIGHT SIDE |
| 1 | 1 | END CAP FTSW 2004 LEFT SIDE |

| | | | | | | | |
|----------------------|--|--|--------------|-------------------|------|---|---|
| MATERIAL NONE | | GENERAL TOLERANCES UNLESS OTHERWISE SPECIFIED ENGLISH FRACT. ±1/32 .X ±.050 .XX ±.020 .XXX ±.010 HOLE DIA +.005 -.001 METRIC .X ±0.5 .XX ±0.25 .XXX ±0.130 HOLE DIA +.013 -.003 | | ENGINEER | | Fender® FENDER MUSICAL INSTRUMENTS CORP. RESEARCH AND DEVELOPMENT CORONA, CALIFORNIA U.S.A. | |
| FINISH NONE | | THIRD ANGLE PROJECTION | | DRAWN | | TITLE FOOTSWITCH ASSEMBLY 4 BUTTON | |
| | | ANGLES ANGLES ±0.5° UNMARKED ANGLES - 90° | | DATE 9/29/2005 | | REV C | |
| DO NOT SCALE DRAWING | | CHKD | S.M.E. (OPT) | MGR/DIR | P.E. | SIZE D | PART NUMBER 0069511000 MASTER/ASSEMBLY |
| | | DATE | DATE | DATE | DATE | FILE NAME: 0069511000C | SCALE: NONE SHEET: 1 of 1 |