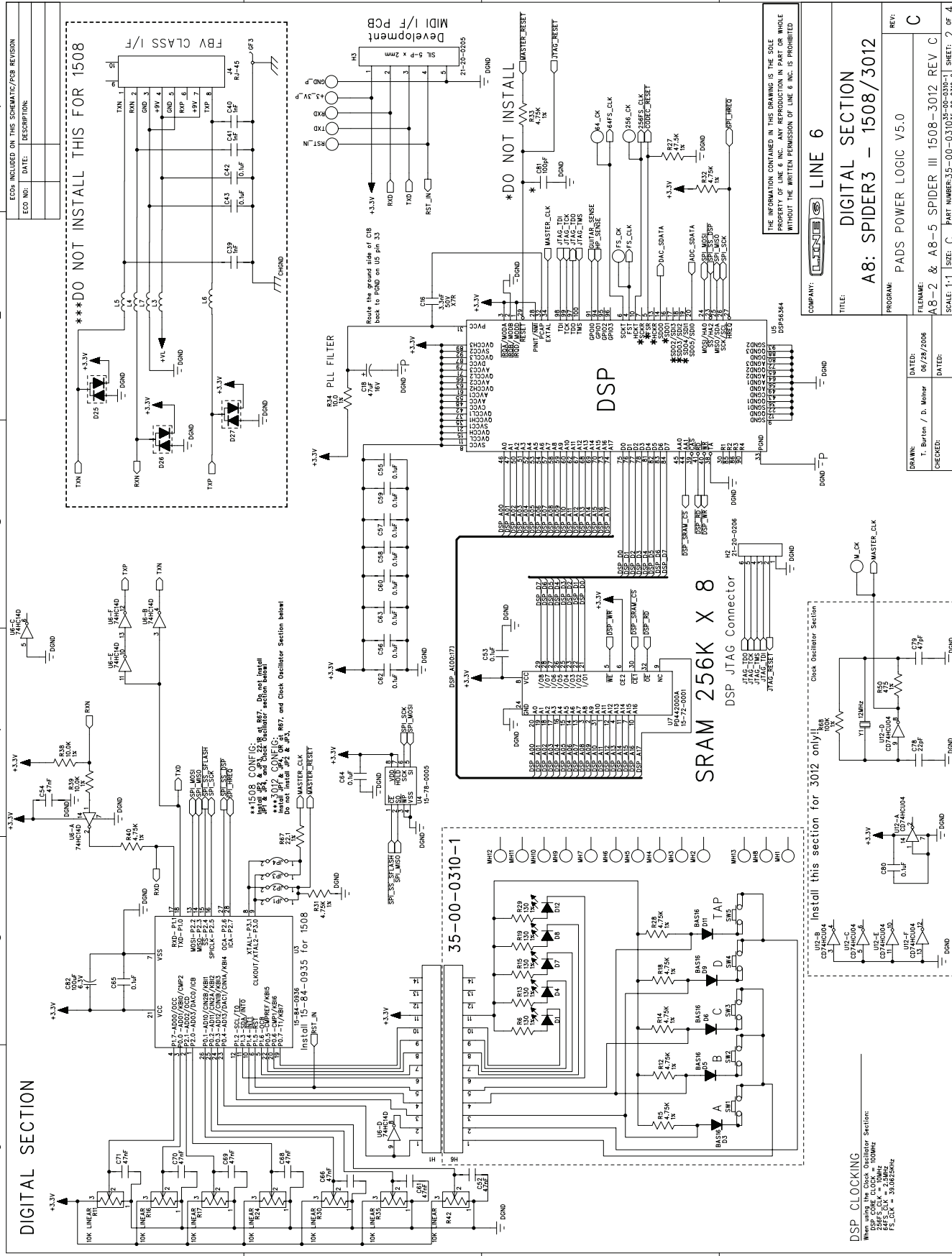




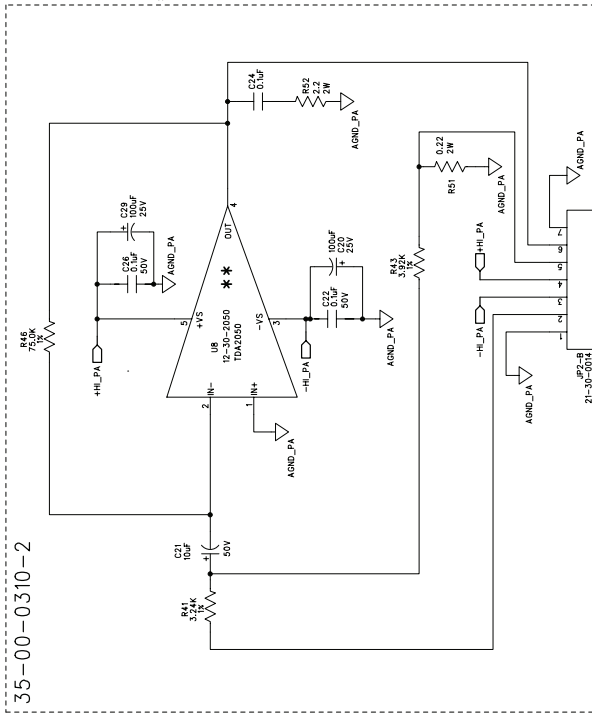
# DIGITAL SECTION



## POWER AMP / HEADPHONE AMP

ECO's INCLUDED ON THIS SCHEMATIC/PCB REVISION		
ECO NO:	DATE:	DESCRIPTION:

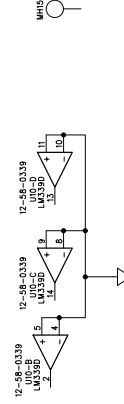
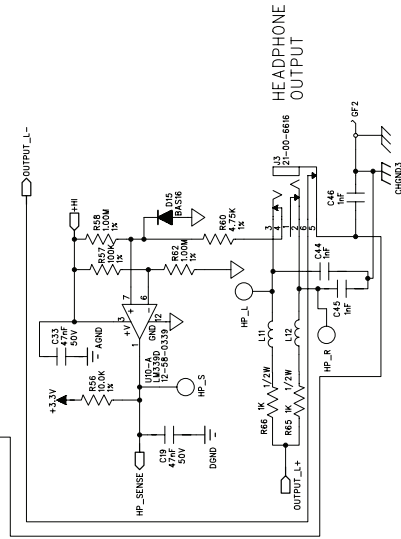
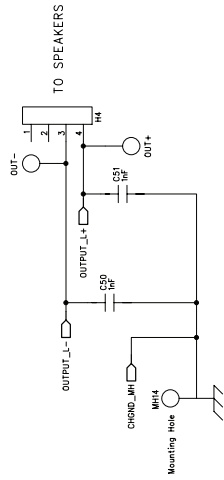
ECO NO:	DATE:	DESCRIPTION:
---------	-------	--------------



```

**U8: INSTALL 12-30-2050 FOR 3012
      INSTALL 12-30-2030 FOR 1508

```



THE INFORMATION CONTAINED IN THIS DRAWING IS THE SOLE PROPERTY OF LINE 6 INC. ANY REPRODUCTION IN PART OR WHOLE WITHOUT THE WRITTEN PERMISSION OF LINE 6 INC. IS PROHIBITED

COMPANY: 

TITLE: A8: SPIDER3 - 1508/3012  
POWER AMP / HEADPHONE AMP

PROGRAM:	PADS POWER LOGIC V5.0	REV:
----------	-----------------------	------

DRAWN:	DATED:
T. BURTON	06/28/2006

DRAWN:	DATED:
T. BURTON	06/28/2006

CHECKED:	DATED:
----------	--------

CHECKED:	DATED:
----------	--------

SCALE: 1:1	SIZE: C	PART NUMBER: 35-00-0310-1	SHEET: 3 OF 4
------------	---------	---------------------------	---------------

SCALE: 1:1	SIZE: C	PART NUMBER: 35-00-0310-1	SHEET: 3 OF 4
------------	---------	---------------------------	---------------

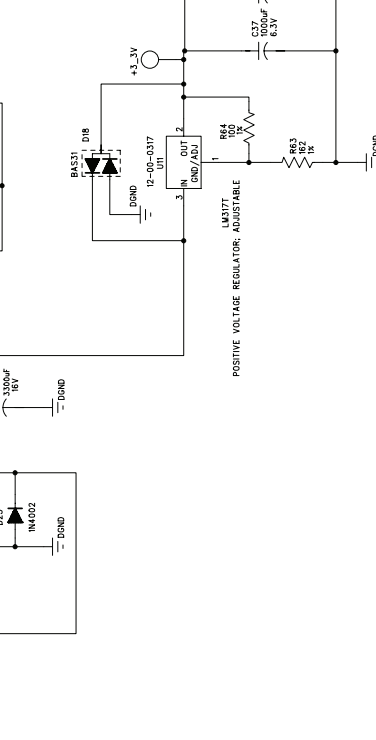
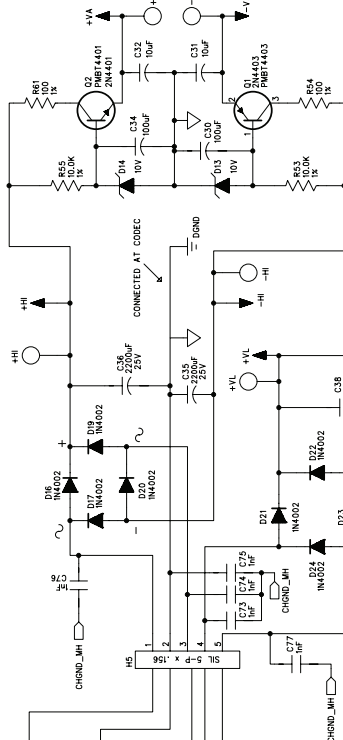
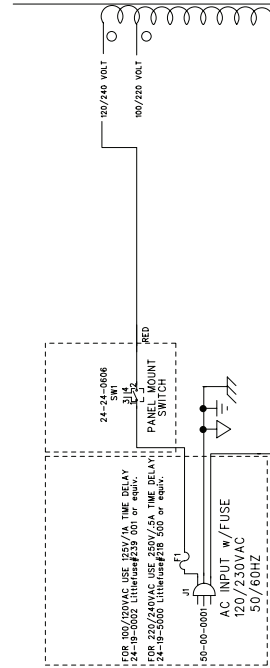
PROGRAM:	PADS POWER LOGIC V5.0	REV:
----------	-----------------------	------

POWER SUPPLY

ECO# INCLUDED ON THIS SCHEMATIC/PCB REVISION

ECO NO: DATE: DESCRIPTION:

DIFFERENT TRANSFORMER  
FOR USA & EUROPE  
150V: 150V-35-0015  
120V/120V = 15-35-0015  
220V/240V = 15-35-0016  
200V: 200V-35-0013  
180V/120V = 15-35-0013  
220V/240V = 15-35-0014



THE INFORMATION CONTAINED IN THIS DRAWING IS THE SOLE  
PROPERTY OF LINE 6 INC. ANY REPRODUCTION IN PART OR WHOLE  
WITHOUT THE WRITTEN PERMISSION OF LINE 6 INC. IS PROHIBITED

COMPANY: LINE 6

TITLE: A8: SPIDER 3 - 1508/3012  
POWER SUPPLY

PROGRAM: PADS POWER LOGIC V5.0

DRAWN: T. BURTON  
DATE: 06/28/2006

CHECKED: DATE:

REV: C

FILENAME: A8-2 & A8-5 SPIDER III 1508-3012 REV C

SHEET: 4 OF 4  
SCALE: 1:1  
PART NUMBER: 35-00-0310-1