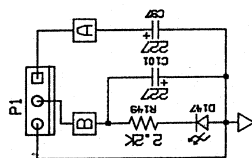


THE PRESENTATION OF ALL INFORMATION IN THIS DOCUMENT IS UNCLASSIFIED. IT IS THE PROPERTY OF THE UNITED STATES GOVERNMENT. REPRODUCTION, USE AND SALE OF THIS INFORMATION IS UNRESTRICTED. RIGHTS THEREIN, AND TO ANY ARTICLE DISCLOSED THEREIN, EXCEPT TO THE EXTENT RIGHTS ARE EXPRESSLY GRANTED TO OTHERS.

NOTE: Certain ECOs will affect the board layout and schematics at times. A boldface number will appear near parts if it is a small change, or a pre-facing note if there are major changes.

NOTES: UNLESS OTHERWISE SPECIFIED,  
1. RMS VOLTAGE WITH 100HZ  
5V (-4608V) INPUT.  
2. SWITCHES OUT. SMALL KNOBS ON 0.  
VOLUME, EQ AND MASTER ON 10.

**NOTE:** Certain ECOs will affect the board layout and schematics at times. A boldface number will appear near parts if it is a small change, or a pre-facing note if there are major changes.



NOTES: UNLESS OTHERWISE SPECIFIED,

1. ☐ RMS VOLTAGE WITH 100HZ 5MV (-460BV) INPUT.
2. SWITCHES OUT. SMALL KNOBS ON 0. VOLUME EQ AND MASTER ON 10.

PCO#	DATE	FIRST SN	PCO#	DATE	FIRST SN	PCO#	DATE	FIRST SN
4	1/91							
5	1/91							

GALLIEN-KRUEGER	MODEL #:	DATE:	DESCRIPTION:
	MB-S PREAMP	1-24-91	MICRO BASS - STD. PREAMP
SCHEMATIC PG: 1 OF: 1	DESIGNED BY:	BOARD #:	PCB#-DATE:
	M.P.J.	406-0061C/D	5 - 1/91
		FROM SN#	TO SN: