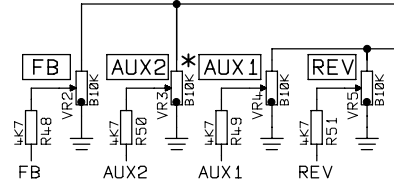
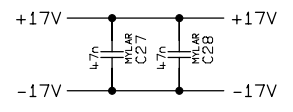
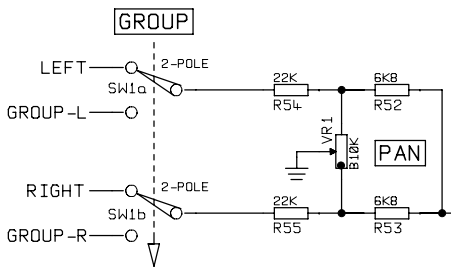
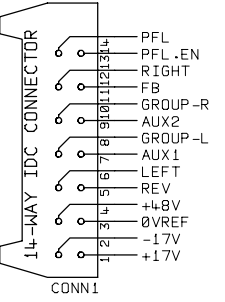


**LINK OPTIONS**

FUNCTION	FIT LINK	REMOVE LINK	FACTORY FITTED
+4.8 VOLTS	LK6		✓
REV + A1 POST FADER	LK1		✓
REV + A1 PRE FADER	LK2	LK1	✗
A2 + FB POST FADER	LK7	LK8	✗
A2 + FB PRE FADER	LK8		✓
PRE FADE POST SOURCE	LK9		✓
PRE FADE PRE EQ	LK10	LK9	✗



NOTE : COMPONENTS MARKED \* = FITTED ON HORIZON 1208 / 1216 ONLY

STUDIOMASTER DIAMOND LTD		TITLE	MONO INPUT CIRCUIT		FILE NAME	R1C4-4.DGM
PRODUCT	POWERHOUSE VISION / HORIZON		PART 1 OF 1		ISSUE No	
VERSIONS	708	712	1208	1216	DRN BY	P.A.
					DATE	22-07-97
						<b>R1C4-4</b>

= FIT COMPONENT WITH BODY 3MM OFF BOARD