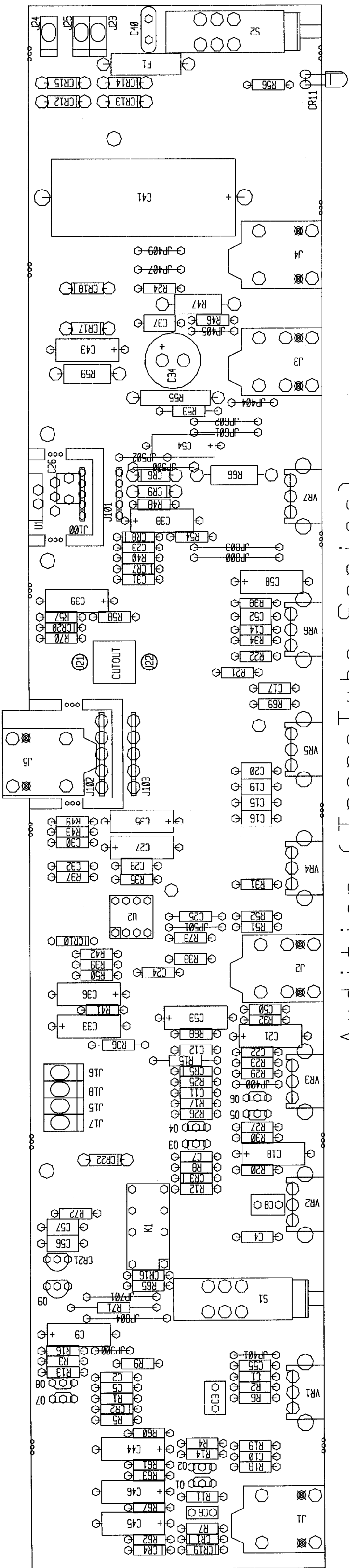


PEAVEY ELECTRONICS CORP.		711 A STREET		39301	
MERIDIAN, MISSISSIPPI					
TITLE		AUDITION '95 (TRANSTUBE SERIES)			
SIZE	CODE	NUMBER	REV		
B		99052351			
PRINT		#81501620			
DATE	8-SEP-95		SHEET	1	OF 1



Audition (Transtube Series)

BOARD NAME: AUDITION TRANSUBE

CIBS PART	DESCRIPTION AND		PART		PART	
	* QTY.	NAME	VALUE	NUMBER	DEVICE DESIGNATIONS	*****
*****	*****	*****	*****	*****	*****	*****
1	.001			70340000	.001MF—10%—50VDC—MON—T&R	C1
1	.047			70340017	.047MF—10%—50VDC—MON—T&R	C2
1	.047M			70330136	.047M 5% 50vdc my T&A	C3
1	4702F			70340058	4702F—10%—50VDC—T/C—T&R	C4
1	.015			70340010	.015MF—10%—50VDC—T/C—T&R	C5
1	.15F			70330113	0.10 MFD 10% 100V STCK FILM T&A	C6
1	.001			70340000	.001MF—10%—50VDC—MON—T&R	C7
1	.047M			70330136	.047M 5% 50vdc my T&A	C8
1	22A25			70320012	22MFD +/-20% 25VDC EL AXL	C9
1	.0068			70340008	.0068MF—10%—50VDC—MON—T&R	C10
1	4702F			70340058	4702F—10%—50VDC—T/C—T&R	C11
1	.022			70340012	.022MF—10%—50VDC—MON—T&R	C12
1	4702F			70340058	4702F—10%—50VDC—T/C—T&R	C14
2	.1P10			70340101	.1MF—10%—50VDC—MON—T&R	C15, C16
-1	.012			70340009	.012MF—10%—50VDC—T/C—T&R	C17
1	2.2A35			70320200	2.2MFD 35VDC LY.CAP T&R	C18
2	.1P10			70340101	.1MF—10%—50VDC—MON—T&R	C19, C20
1	22A25			70320012	22MFD +/-20% 25VDC EL AXL	C21
1	.015			70340010	.015MF—10%—50VDC—T/C—T&R	C22
1	.033			70340014	.033MF—10%—50VDC—MON—T&R	C23
1	.015			70340010	.015MF—10%—50VDC—T/C—T&R	C24
1	.047P80			70340016	.047MF+80-20%—50VDC—MON—T&R	C25
1	.225F2			70330114	0.22 MF 5% 100V STCK FILM T&A	C26
1	2.2A35			70320200	2.2MFD 35VDC LY.CAP T&R	C27
1	.1P10			70340101	.1MF—10%—50VDC—MON—T&R	C29
1	.001			70340000	.001MF—10%—50VDC—MON—T&R	C30
2	.002F			70340054	100PF—10%—50VDC—T/C—T&R	C31, C32
1	22A25			70320012	22MFD +/-20% 25VDC EL AXL	C33
1	.000R35			70320186	1000MF—20%—35VDC—EL—T&A	C34
1	2.2A35			70320200	2.2MFD 35VDC LY.CAP T&R	C35
1	22A25			70320012	22MFD +/-20% 25VDC EL AXL	C36
1	.1P10			70340101	.1MF—10%—50VDC—MON—T&R	C37
2	10A50			70320112	10MFD 50V T&R	C38, C39
1	.01CD			70320248	.01MF—20%—100VDC—CD—T&A	C40
1	2200A63			70320274	2200 MFD 20% 63VDC LYTIC CAP AXL	C41
2	10A50			70320112	10MFD 50V T&R	C43, C44
2	22A25			70320012	22MFD +/-20% 25VDC EL AXL	C45, C46
1	.0068			70340008	.0068MF—10%—50VDC—MON—T&R	C50
1	.1P10			70340101	.1MF—10%—50VDC—MON—T&R	C52
1	10A50			70320112	10MFD 50V T&R	C53
1	2.2A35			70320200	2.2MFD 35VDC LY.CAP T&R	C54
1	1802F			70340056	180PF—10%—50VDC—T/C—T&R	C55
2	.1P10			70340101	.1MF—10%—50VDC—MON—T&R	C56, C57
1	22A25			70320012	22MFD +/-20% 25VDC EL AXL	C58
5	1N4148			70464148	1N4148 75V 10MA SILICON DIODE	CR1, CR2, CR3, CR4, CR5
1	1N4003			70464003	1N4003 200V SILICON DIODE	CR5
2	1N4148			70464148	1N4148 75V 10MA SILICON DIODE	CR7, CR8
1	1N4003			70464003	1N4003 200V SILICON DIODE	CR9

1	1N4148	4148	70464148	1N4148 75V 10MA SILICON DIODE	CR10	70240022	3.3K—1/4W—5%—CF—T&R	R32
1	RALEDRL	RALEDRL	70450053	LED, T-1, RED, W/STOPPER LEAD T&A	CR11	70240025	10K—1/4W—5%—CF—T&R	R33, R34
4	1N4003	1N4003	70464003	1N4003 200V SILICON DIODE	CR12, CR13, CR14, CR15	70240034	100K—1/4W—5%—CF—T&R	R35, R36
1	1N4148	4148	70464148	1N4148 75V 10MA SILICON DIODE	CR16	70240017	1K—1/4W—5%—CF—T&R	R37
2	1N4744	4744	70440102	SZG40102 15V 5% ZENER DIODE	CR17, CR18	70240027	15K—1/4W—5%—CF—T&R	R38
2	1N4148	4148	70464148	1N4148 75V 10MA SILICON DIODE	CR19, CR20	70240034	100K—1/4W—5%—CF—T&R	R39
1	MAC97	MAC97	70460097	MAC97—6 400V .6A TO-92 TRIAC T&A	CR21	70240032	68K—1/4W—5%—CF—T&R	R40
1	1N4744	4744	70440102	SZG40102 15V 5% ZENER DIODE	CR22	70240034	100K—1/4W—5%—CF—T&R	R41
1	3AFECB	3AFCB	70901182	3A FUSE T&R	F1	70240017	1K—1/4W—5%—CF—T&R	R42
1	RAMN6322	71466322	71466322	JACK MONO R/A 1/4" 6.5MM NINS	J1	70240031	47K—1/4W—5%—CF—T&R	R43
1	RASN6323	71466323	71466323	JACK STEREO R/A 1/4" 6.5MM NINS	J2	70240002	4.7—1/4W—5%—CF—T&R	R46
1	RASL6223	71466223	71466223	JACK stereo r/a 1/4" 6.5mm	J3	70210003	100—1W—5%—MO—T&R	R47
2	RAMN6322	71466322	71466322	JACK MONO R/A 1/4" 6.5MM NINS	J4, J5	70240032	68K—1/4W—5%—CF—T&R	R48
4	SPX1U	SPX1U	73717003	1 STAKE PIN	J15, J16, J17, J18	70240013	1.5K—1/4W—5%—CF—T&R	R49
1	WJ8YL12	WJ8YL12	91015128	YL—18G—12" —CPT—205SPD	J21	70240005	15—1/4W—5%—CF—T&R	R50
1	WJ8BL12	WJ8BL12	91014127	BL—18G—12" —CPT—205SPD	J22	70240034	100K—1/4W—5%—CF—T&R	R51, R52
3	SPX1U	SPX1U	73717003	1 STAKE PIN	J23, J24, J25	70240062	2.4K—1/4W—5%—CF—T&R	R53
2	5PRC3J	5PRC3J	70600037	5C PRE-TIN .100 3" JUMPER	J100, J101	70240011	120—1/4W—5%—CF—T&R	R54
2	5CJMP7	70600008	70600008	5 CONDUCTOR - 7" JUMPER CABLE -.156 CTRS	J102, J103	70241101	.33—2W—10%—HW—T&R	R55
1	12VRELAY	71322277	71322277	DPDT OMRON RELAY 12VDC	K1	70240023	4.7K—1/4W—5%—CF—T&R	R56
8	1740	1740	70401740	28C1740SLN 40V, 1A, NPN, LOW NOISE T&A	Q1, Q2, Q3, Q4, Q5, Q6, Q7, Q8	70240025	10K—1/4W—5%—CF—T&R	R57, R58
1	J174	J174	70460174	J—174 30V TO-92 P-CHAN FET T&A	Q9	70210007	1.5K—1W—5%—MO—T&R	R59
1	2.2M	2.2M	70240040	2.2M—1/4W—5%—CF—T&R	R1	70240020	2.2K—1/4W—5%—CF—T&R	R60
1	680K	680K	70240065	680K—1/4W—5%—CF—T&R	R2	70240029	22K—1/4W—5%—CF—T&R	R61
1	33K	33K	70240030	33K—1/4W—5%—CF—T&R	R3	70240013	1.5K—1/4W—5%—CF—T&R	R62, R63
1	150Kp1	150Kp1	70241035	150K—1/4W—1%—MF—T&R	R4	70240013	270—1/4W—5%—CF—T&R	R65
1	1M	1M	70240039	1M—1/4W—5%—CF—T&R	R5	70210007	1.5K—1W—5%—MO—T&R	R66
1	470K	470K	70240038	470K—1/4W—5%—CF—T&R	R6	70240021	2.7K—1/4W—5%—CF—T&R	R67
1	1M	1M	70240039	1M—1/4W—5%—CF—T&R	R7	70240025	10K—1/4W—5%—CF—T&R	R68
1	150Kp1	150Kp1	70241035	150K—1/4W—1%—MF—T&R	R8	70240021	2.7K—1/4W—5%—CF—T&R	R69
1	150K	150K	70240035	150K—1/4W—5%—CF—T&R	R9	70240031	47K—1/4W—5%—CF—T&R	R70
1	47K	47K	70240031	47K—1/4W—5%—CF—T&R	R11	70240008	47—1/4W—5%—CF—T&R	R71
1	1M	1M	70240039	1M—1/4W—5%—CF—T&R	R12	70240039	1M—1/4W—5%—CF—T&R	R72
2	470K	470K	70240038	470K—1/4W—5%—CF—T&R	R13, R14	70240016	680—1/4W—5%—CF—T&R	R73
1	150K	150K	70240035	150K—1/4W—5%—CF—T&R	R15	71322289	DPDT P/P CB MNT SWITCH	S1, S2
1	1.5K	1.5K	70240018	1.5K—1/4W—5%—CF—T&R	R16	70401875	LM1875 PWR-OP-AMP VER. MNT.	U1
1	470K	470K	70240038	470K—1/4W—5%—CF—T&R	R17	4560	DUAL OP AMP IC	U2
1	22K	22K	70240029	22K—1/4W—5%—CF—T&R	R18	71190803	1M 5%A 122 VPC ROTRY D-SHAFT	VR1, VR2
1	68K	68K	70240032	68K—1/4W—5%—CF—T&R	R19	71190800	10KB 12MM VPC ROTARY D-SHAFT	VR3
1	100K	100K	70210034	100K—1/4W—5%—CF—T&R	R20	71190802	50KA 12MM VPC ROTARY D-SHAFT	VR4
1	8.2K	8.2K	70240049	8.2K—1/4W—5%—CF—T&R	R21	71190800	10KB 12MM VPC ROTARY D-SHAFT	VR5
1	47K	47K	70240031	47K—1/4W—5%—CF—T&R	R22	71190801	50KB 12MM VPC ROTARY D-SHAFT	VR6
1	470K	470K	70240038	470K—1/4W—5%—CF—T&R	R23	71190800	10KB 12MM VPC ROTARY D-SHAFT	VR7
1	47PF	47PF	70240090	47PF—1/4W—5%—CF—T&R	R24	*****	*****	*****
1	470K	470K	70240038	470K—1/4W—5%—CF—T&R	R25			
1	1.5K	1.5K	70240018	1.5K—1/4W—5%—CF—T&R	R26			
1	470K	470K	70240038	470K—1/4W—5%—CF—T&R	R27			
1	10K	10K	70240025	10K—1/4W—5%—CF—T&R	R29			
1	.0068		70240022	3.3K—1/4W—5%—CF—T&R	R30			
1	2.7K	2.7K	70240021	2.7K—1/4W—5%—CF—T&R	R31			