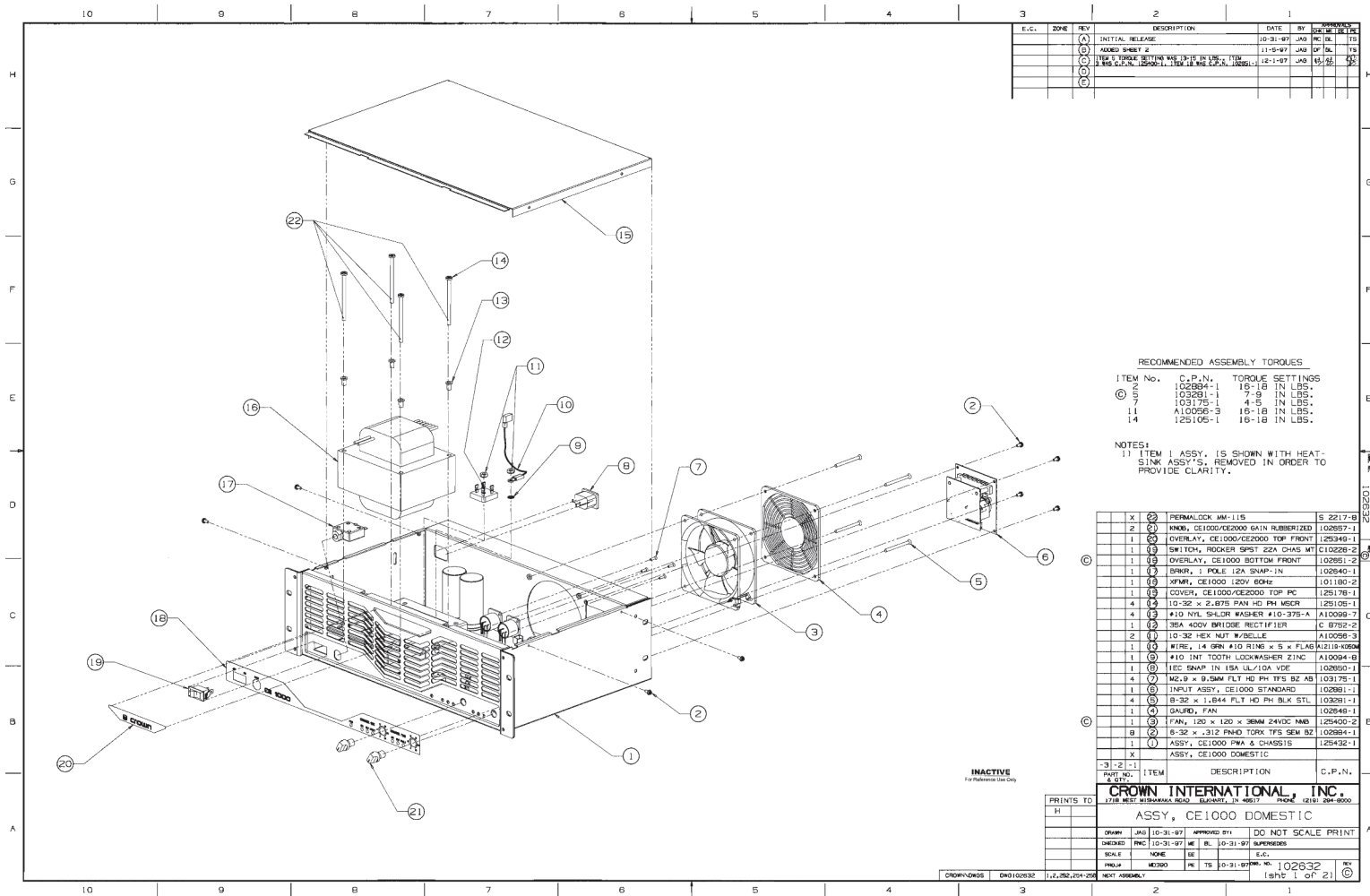

6 Exploded Views, Parts Lists

See illustration on next page (102632).

Obtain CPNs (Crown Part Numbers) from the bill of material following the illustration. The CPNs on the illustration may not be up-to-date.

Notes: 1) Item 1 assy. is shown with heatsink assys. removed in order to provide clarity.

Assy. CE 1000 Domestic



E.C.	206	REV	DESCRIPTION	DATE	BY	CHK'D	APP'D
(A)			INITIAL RELEASE	10-31-97	JAB	MC	TS
(B)			ADDED SHEET 2	11-9-97	JAB	DP	TS
(C)			ITEM 1 TORQUE SETTING CHANGED TO 16-18 IN LBS.	12-1-97	JAB	ES	TS
(D)			REPL. C.P.N. 1000-1-100, 1-100, 1-100, 1-100, 1-100				
(E)							

RECOMMENDED ASSEMBLY TORQUES		
ITEM No.	C.P.N.	TORQUE SETTINGS
(C) 1	10000-1	16-18 IN LBS.
2	10000-2	7-9 IN LBS.
3	10000-3	4-5 IN LBS.
4	10000-4	16-18 IN LBS.
14	125105-1	16-18 IN LBS.

NOTES:
1) ITEM 1 ASSY. IS SHOWN WITH HEAT-SINK ASSY'S. REMOVED IN ORDER TO PROVIDE CLARITY.

X	(C) 1	PERMALOCK AM-115	S 2217-B
2	(C) 2	WIRE, CE1000/CE2000 64IN RUBBERIZED	102937-1
1	(C) 3	OVERLAY, CE1000/CE2000 TOP FRONT	125349-1
1	(C) 4	SWITCH, ROCKER SPST 22A CHAS MT	C10226-2
1	(C) 5	OVERLAY, CE1000 BOTTOM FRONT	102951-2
1	(C) 6	SWIRL, 1 POLE 12A SNAP-IN	102940-1
1	(C) 7	WFR, CE1000 120V 60Hz	101180-2
1	(C) 8	COVER, CE1000/CE2000 TOP PC	125176-1
4	(C) 9	10-32 x 2.875 PAN HD PH MSOR	125105-1
4	(C) 10	#10 NYL SPKR WASHER #10-375-A	A10009-3
1	(C) 11	35A 400V BRIDGE RECTIFIER	C 8752-2
2	(C) 12	10-32 HEX NUT W/BELLE	A10056-3
1	(C) 13	WIRE, 14 GRN #10 RING x 5 x FLAG	A12119-1000A
1	(C) 14	#10 TMT 100TH LOCKWASHER ZINC	A10004-8
1	(C) 15	1EC SNAP IN 15A UL/10A VDE	102950-1
4	(C) 16	M2.9 x 9.5MM FLT HD PH TFS BZ AB	103175-1
1	(C) 17	INPUT ASSY, CE1000 STANDARD	102981-1
4	(C) 18	8-32 x 1.844 FLT HD PH BLK STL	103281-1
1	(C) 19	SAFARI, FAN	102948-1
1	(C) 20	FAN, 120 x 120 x 38MM 24VDC NMB	125400-2
1	(C) 21	8-32 x .312 PHD TORX TFS SEM BZ	102984-1
1	(C) 22	ASSY, CE1000 PWA & CHASSIS	125432-1

INACTIVE
For Replacement Use Only

PRINTS TO		ITEM	DESCRIPTION	C.P.N.
H				
A				
B				
C				
D				
E				
F				
G				
H				

CROWN INTERNATIONAL, INC.
1718 WEST 31ST STREET, SUITE 100, DENVER, CO 80202-3500

ASSY, CE1000 DOMESTIC

DO NOT SCALE PRINT

SCALE: NONE

PROJ: M2300

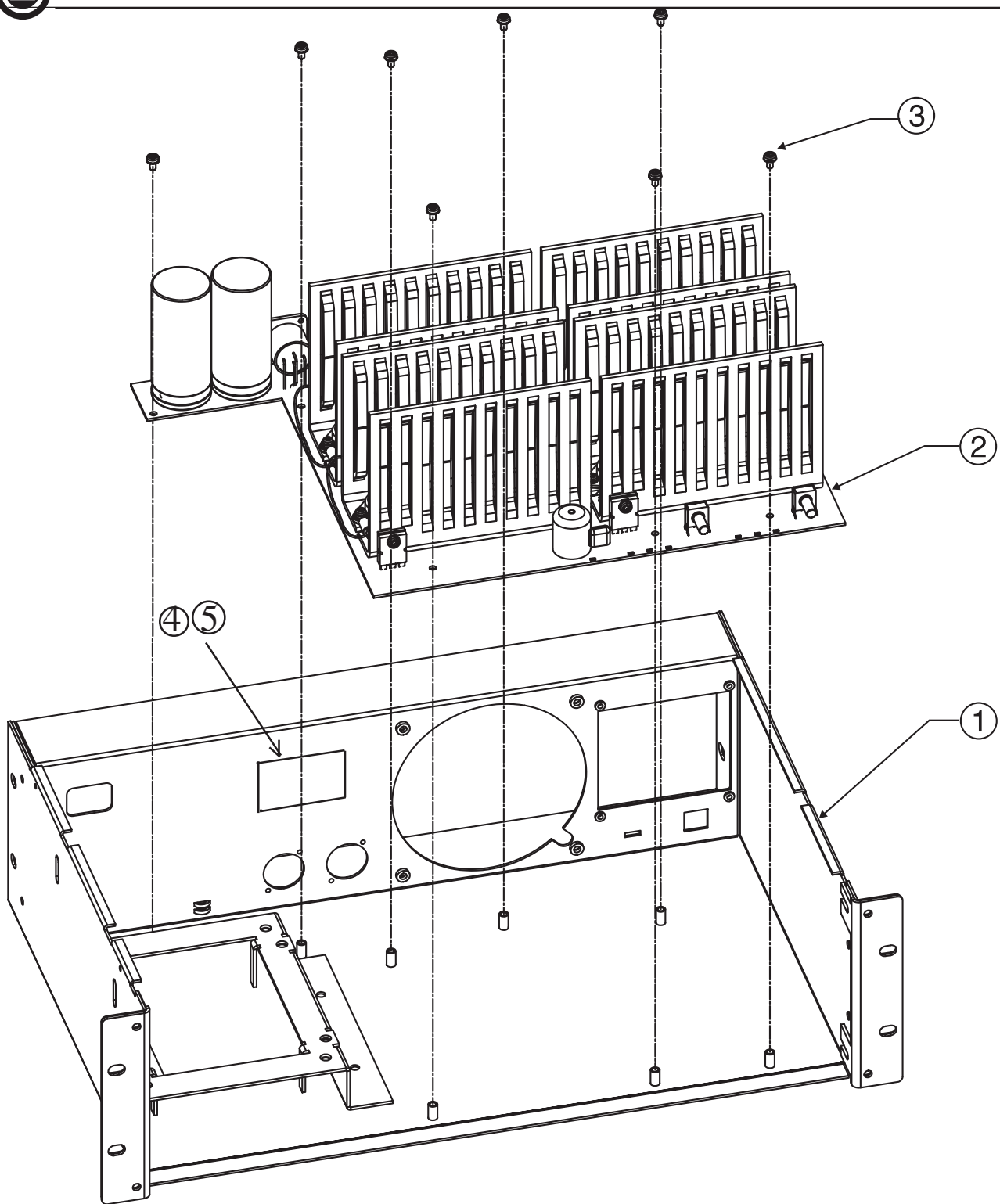
DATE: 10-31-97

BY: JAB

CHK'D: MC

Assy. CE 1000 Domestic

<u>Item</u>	<u>Qty.</u>	<u>Description</u>		<u>CPN</u>
1	1	Chassis, CE 1000/CE 2000 WELD		133817-1
2	8	6-32 x .312 PNHD TORX TFS SEM BZ		102884-1
3	1	Fan, 120 x 120 x 38mm 24VDC NMB	old	125400-2
3	1	Fan, 120 x 120 x 38mm 24VDC 140CFM	new	133551-1
4	1	Guard, Fan		102649-1
5	4	8-32 x 1.844 FLT HD PH BLK STL		103281-1
6	1	Input Assembly, CE1000 Standard		126773-4
7	4	M2.9 x 9.5mm FLT HD PH TFS BZ AB		103175-1
8	1	IEC Snap IN 15A UL/10A VDE		102650-1
9	1	#10 INT Tooth Lockwasher Zinc		A10094-8
10	1	Wire, 14 GRN #10 Ring x 5 x FLAG		A12119-K050M
11	2	10-32 Hex Nut w/Belle		A10056-3
12	1	35A 400V Bridge Rectifier		C 8752-2
13	4	#10 NYL SHLDR Washer #10-375-A		A10099-7
14	4	10-32 x 2.875 PAN HD PH MSCR		125105-1
15	1	Cover, CE 1000/CE 2000 Top PC		133824-1
16	1	XFMR, CE 1000 120V 60HZ		101180-2
17	1	BRKR, 1 Pole 12A Snap-in		102640-1
18	1	Overlay, CE 1000 Bottom Front		102651-5
19	1	Switch, Rocker SPST 22A CHAS MT		126459-1
20	1	Overlay, CE 1000/CE 2000 Top Front		128284-1
21	2	Knob, CE 1000/CE 2000 Gain Rubberized		102657-1
22	X	Permalock MM-115		S 2217-8



Note: Item 1 is shown with front face plate removed in order to provide clarity.

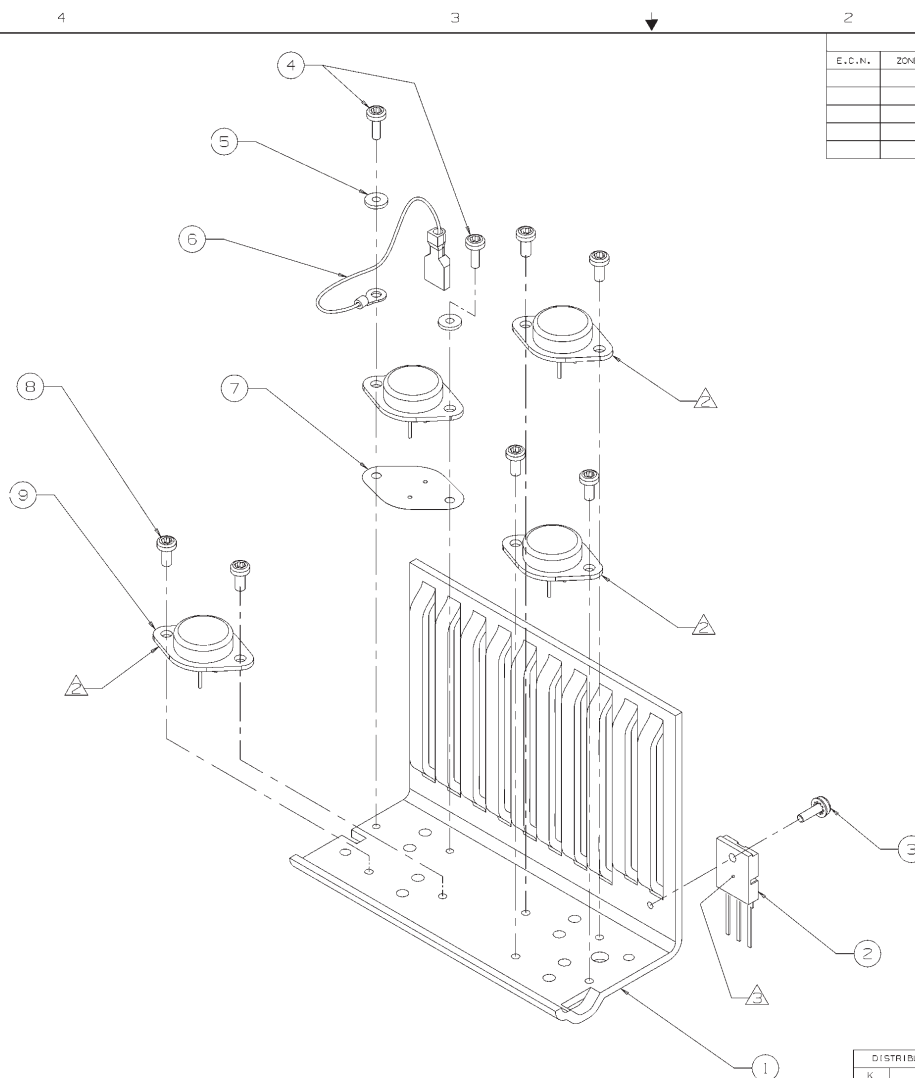
Assy. CE 1000 PWA & Chassis

Assy. CE 1000 PWA & Chassis

<u>Item</u>	<u>Qty.</u>	<u>Description</u>	<u>CPN</u>
1	1	Chassis, CE 1000/CE 2000 WELD/AP/PC/SP	133817-1
2	1	PWA, CE1000 MAIN	127451-4
3	8	6-32 X .25 Torx Pnhd Nylon	132240-10604
4	1	Blank Plate	126730-1
5	2	Screws	126979-1

See illustration on next page (133695-1).

HS Assy. CE 1000 Isolated Ch.1



REVISIONS									
E.C.N.	ZONE	REV	DESCRIPTION	DATE	DWN	CHK	CM	PE	
		(A)	INITIAL RELEASE DERIVED FROM 133695-1 REV 1, TITLE WAS RELOD.	12-17-01	EDT	N/A	MMG	PJ	

ASSEMBLY TORQUES		
ITEM No.	C.P.N.	TORQUE SETTINGS
3	103233-1	12-14 IN LBS.
4	125785-1	10-12 IN LBS.
8	102719-1	12-14 IN LBS.

- NOTES:
- 1) ITEM 1 IS SHOWN SECTIONED IN ORDER TO PROVIDE CLARITY.
 - 2) APPLY WHITE GREASE C.P.N. S 2162-6 ON MATING SURFACE OF ITEM 9 TO HEATSINK.
 - 3) APPLY CLEAR GREASE C.P.N. S 2422-4 ON MATING SURFACE OF ITEM 2 TO HEATSINK.

4	NPN, TO-3 MJ21194 PWR	102659-1
6	6-32 x .312 TORX PAN HD TFS	102719-1
1	ISOLATOR, TO-3 0.16 GOLD C/W	102577-1
1	WIRE, BLK 5" 6 RING x .25 FAST	A11389-A050K
2	SHLDR WSHR, M3 NYLON/GLASS GRN	126017-2
2	4-40 x .375 #6 PNHD T15 SEM STL Z	126785-1
1	M3 x 10 TFS 6-32 TORX PNHD SEM BZ	103233-1
1	2SC5242 NPN 230V 15A 30MHZ	103200-1
1	HEATSINK, CE1000	102606-6

DISTRIBUTION			OWN			EDT			DESCRIPTION			PART NO.		
K			CM	N/A	N/A									
CROWN/DWG			CM	MMG	20102	TITLE			1710 WEST MISHAWAKA RD.			ELKHART, IN 46517		
DWG 133695-1.PRT			PE	PJ	12-17-01	INTERNATIONAL, INC.			PHONE: (219) 294-8000			WWW.CROWNINTL.COM		
TOLERANCE UNLESS OTHERWISE SPECIFIED			SIZE			DWG NO.			133695-1			REV		
.000 - +.020			C			SCALE			1:1			PROJ NO.		
.000 - +.010												MD380		
ANGLES - ±1.0°												SHEET		
DO NOT SCALE DRAWING												1 OF 1		

UNCONTROLLED
UNLESS OTHERWISE MARKED IN RED INK BY CM AS A CONTROLLED COPY, COPIES OF THESE DOCUMENTS AND ASSOCIATED ELECTRONIC FILES ARE UNCONTROLLED AND ARE FOR REFERENCE ONLY.
THESE DRAWINGS, SPECIFICATIONS AND ASSOCIATED ELECTRONIC FILES ARE THE PROPERTY OF CROWN INTERNATIONAL, INC. AND SHALL NOT BE REPRODUCED, COPIED, OR USED AS THE BASIS FOR THE MANUFACTURE OR SALE OF APPARATUS OR DEVICES WITHOUT PERMISSION.
DO NOT SCALE DRAWING

HS Assy. CE 1000 Isolated Ch.1

<u>Item</u>	<u>Qty.</u>	<u>Description</u>	<u>CPN</u>
1	1	Heatsink, CE1000	102606-6
2	1	2SC5242 NPN 230V 15A 30MHZ	103200-1
3	1	M3 x 10 TFS 6-32 TORX PNHD SEM BZ	103233-1
4	2	4-40 x .437 TORX PAN HD TFS SEM	126785-1
5	2	NYL .115 SHLDR WSHR	126017-2
6	1	Wire, BLK 5" 6 RING x .25 FAST	A11389-A050K
7	1	Isolator, TO-3 0.16 GOLD C/W	102577-1
8	6	6-32 x .312 TORX PAN HD TFS	102719-1
9	4	NPN, TO-3 MJ21194 PWR	102659-1

See illustration on next page (102570-3).

HS Assy. CE 1000 Isolated Ch.2

HS Assy. CE 1000 Isolated Ch.2

<u>Item</u>	<u>Qty.</u>	<u>Description</u>	<u>CPN</u>
1	1	Heatsink, CE1000	102606-7
2	1	2SC5242 NPN 230V 15A 30MHZ	103200-1
3	1	M3 x 10 TFS 6-32 TORX PNHD SEM BZ	103233-1
4	4	NPN, TO-3 MJ21194 PWR	102659-1
5	6	6-32 x .312 TORX PAN HD TFS	102719-1
6	1	Isolator, TO-3 0.16 GOLD C/W	102577-1
7	1	Wire, BLK 5" 6 RING x .25 FAST	A11389-A050K
8	2	NYL .115 SHLDR WSHR	126017-2
9	2	4-40 x .437 TORX PAN HD TFS SEM	126785-1

See illustration on next page (133696-1).

HS Assy. CE 1000 Non-isolated Ch.1




ITEM No.	C.P.N.	TORQUE SETTINGS
3	103233-1	12-14 IN. BS.
4	102719-1	12-14 IN. BS.
5	126785-1	10-12 IN. BS.

3 APPLY CLEAR GREASE C.P.N. S 2422-4 CN
MATING SURFACE OF ITEM 2 TO HEATSINK.

UNCONTROLLED
UNLESS OTHERWISE MARKED BY ENR AS A
CONTROLLED COPY, COPIES OF THESE DOCUMENTS AND
ASSOCIATED ELECTRONIC FILES ARE UNCONTROLLED AND
ARE FOR REFERENCE ONLY.

THESE DRAWINGS, SPECIFICATIONS AND ASSOCIATED
ELECTRONIC FILES ARE THE PROPERTY OF KBRN
INTERNATIONAL, INC. AND SHALL NOT BE REPRODUCED,
COPIED, OR USED AS THE BASIS FOR THE MANUFACTURE OR
SALE OF APPARATUS OR DEVICES WITHOUT PERMISSION.

DISTRIBUTION		DK	EDI	12-17-01	 17181 WEST MIDKNAH RD. ELSTON, IL 60117 TEL: 708.354.2000 FAX: 708.354.2000 WWW.CROWN-ITL.COM	
K	CM	N/A	N/A			
CROWNINGS		CM	MMC	1/14/02	TITLE	
Q1133595-1-1PRT	PE	PJ	12-17-01	nS ASM, CE100NO NON-ISO-ATED Cn1		
TOLERANCE UNLESS OTHERWISE SPECIFIED						
+0.01 - +0.00						
ANGLES ±1.0°						
DO NOT SCALE DRAWING						
SIZE		DWG NO.		PROJ. NO.		REV
SCALE 1:1		PROJ. NO. M3090		SHEET		1 OF 1
		133695-1				

HS Assy. CE 1000 Non-isolated Ch.1

<u>Item</u>	<u>Qty.</u>	<u>Description</u>	<u>CPN</u>
1	1	Heatsink, CE1000	102606-6
2	1	2SC5242 NPN 230V 15A 30MHZ	103200-1
3	1	M3 x 10 TFS 6-32 TORX PNHD SEM BZ	103233-1
4	6	6-32 x .312 TORX PAN HD TFS	102719-1
5	2	4-40 x .437 TORX PAN HD TFS SEM	126785-1
6	4	NPN, TO-3 MJ21194 PWR	102659-1

See illustration on next page (102572-3).

HS Assy. CE 1000 Non-isolated Ch.2

8

7

6

5

DWG. NO. 102572-3

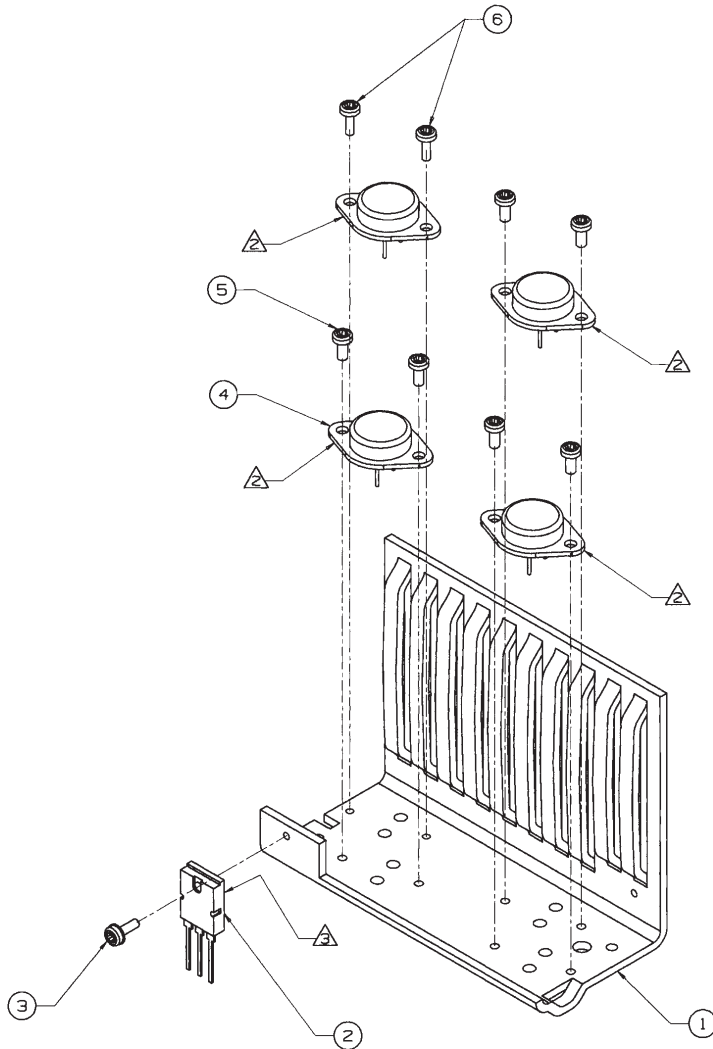
REV

3

2

1

E.C.	ZONE	REV	DESCRIPTION	DATE	BY	CHK	MR	DATE	TS
		(A)	INITIAL RELEASE FOR PRODUCTION	11-19-98	JAG	ET			
01N0777		(B)	CHANGED DISTRIBUTION CODE FROM H TO K	8-21-01	NE				
		(C)							
		(D)							
		(E)							



ASSEMBLY TORQUES

ITEM No.	C.P.N.	TORQUE SETTINGS
3	103233-1	12-14 IN LBS.
5	102719-1	12-14 IN LBS.
6	126785-1	10-12 IN LBS.

NOTES:

1) ITEM 1 IS SHOWN SECTIONED IN ORDER TO PROVIDE CLARITY.

2) APPLY WHITE GREASE C.P.N. S 2162-8 ON MATING SURFACE OF ITEM 4 TO HEATSINK.

3) APPLY CLEAR GREASE C.P.N. S 2422-4 ON MATING SURFACE OF ITEM 2 TO HEATSINK.

(6)	2	4-40 X .375 #6 PNHD T15 SEM STL Z	126785-1
(5)	6	6-32 X .312 TORX PAN HD TFS	102719-1
(4)	4	NPN, TO-3 MJ21194 PWR	102659-1
(3)	1	M3 X 10 TFS 6-32 TORX PNHD SEM BZ	103233-1
(2)	1	25C5242 NPN 230V 15A 30MHZ	103200-1
(1)	1	HEATSINK, CE1000 PC	102606-7
ITEM	QTY	DESCRIPTION	C.P.N.

CROWN INTERNATIONAL, INC.

1718 WEST MISHAWAKA ROAD ELKHART, IN 46517 PHONE (219) 294-8000

HS ASSY, CE1000 NON-ISOLATED CH2

PRINTS TO			
K			
DRAWN	JAG	11-19-98	APPROVED BY:
CHECKED	ET	11-19-98	DO NOT SCALE PRINT
SCALE	1 = 1		SUPERSEDES
PROJ#	MD380		E.C.
TS	11-19-98		REV
102572-3			

CROWN.DWG DWG102572-3

1,252,254-256

NEXT ASSEMBLY 102139

102572-3

REV

8

7

6

5

4

3

2

1

HS Assy. CE 1000 Non-isolated Ch.2

<u>Item</u>	<u>Qty.</u>	<u>Description</u>	<u>CPN</u>
1	1	Heatsink, CE1000	102606-7
2	1	2SC5242 NPN 230V 15A 30MHZ	103200-1
3	1	M3 x 10 TFS 6-32 TORX PNHD SEM BZ	103233-1
4	4	NPN, TO-3 MJ21194 PWR	102659-1
5	6	6-32 x .312 TORX PAN HD TFS	102719-1
6	2	4-40 x .437 TORX PAN HD TFS SEM	126785-1