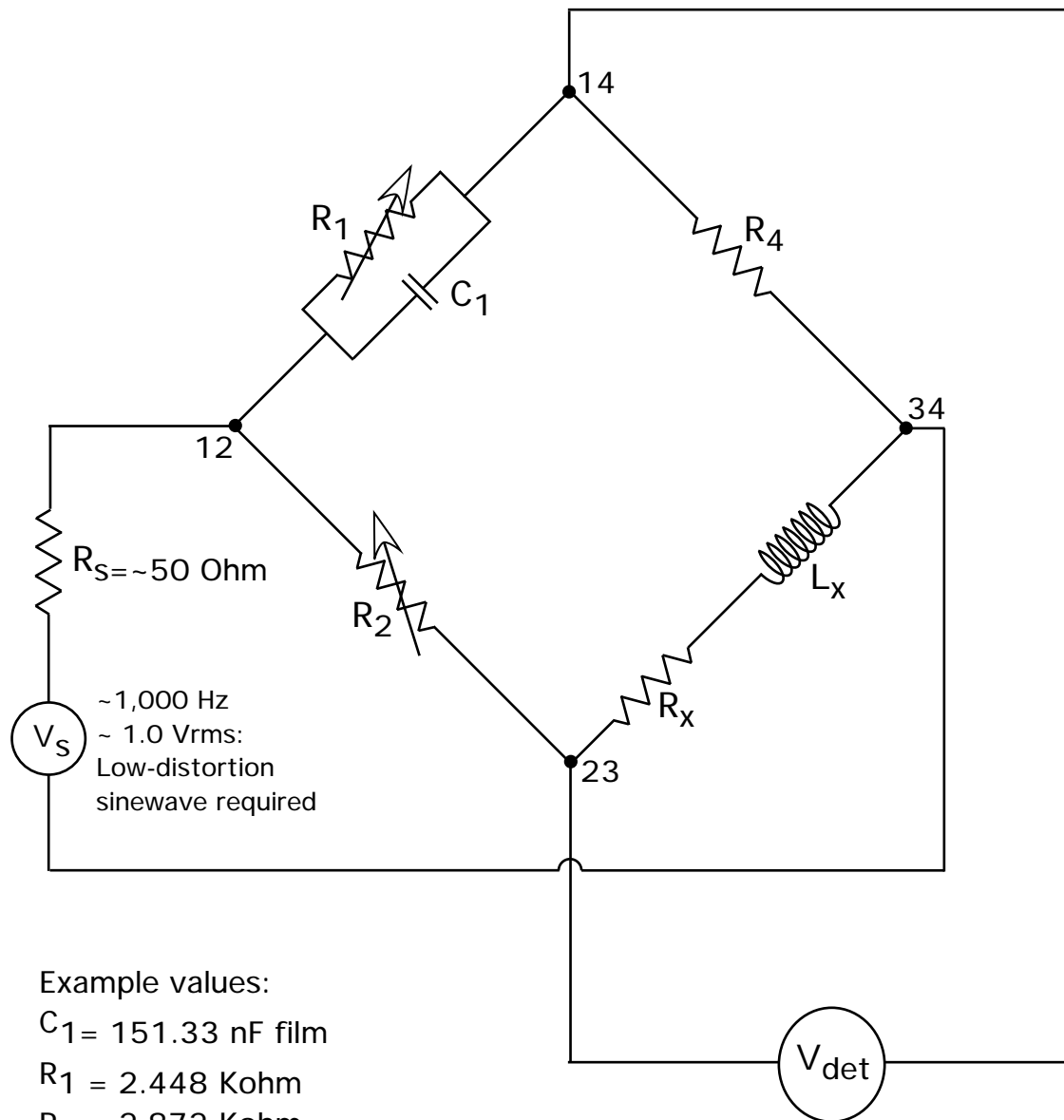


Maxwell-Wein Impedance Bridge

Measures the Inductance and AC Resistance of Guitar Pickups



Example values:

$$C_1 = 151.33 \text{ nF film}$$

$$R_1 = 2.448 \text{ Kohm}$$

$$R_2 = 2.872 \text{ Kohm}$$

$$R_x = 11.724 \text{ Kohm}$$

$$L_x = 4.343 \text{ Henry}$$

$$R_4 = 9.993 \text{ Kohm}$$

At balance (when $V_{\text{det}} \ll 1 \text{ mVrms}$):

$$L_x = R_2 R_4 C_1$$

$$R_x = R_2 R_4 / R_1$$