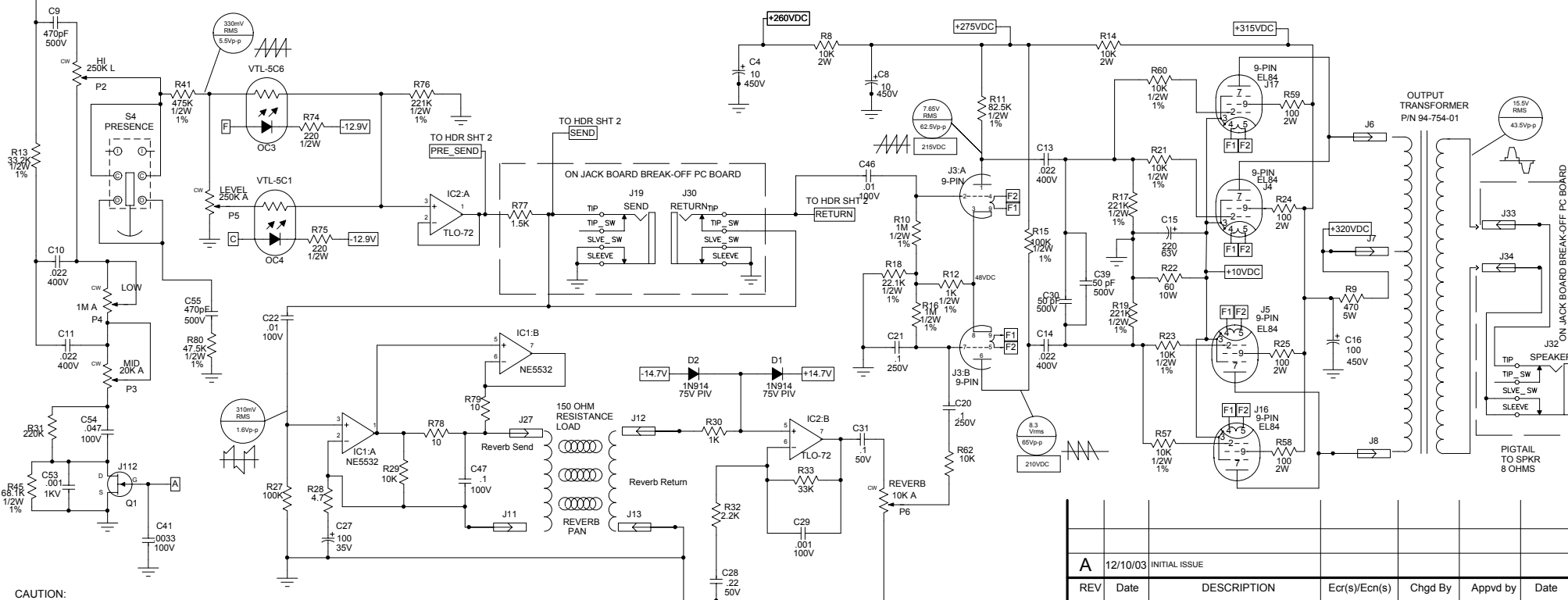
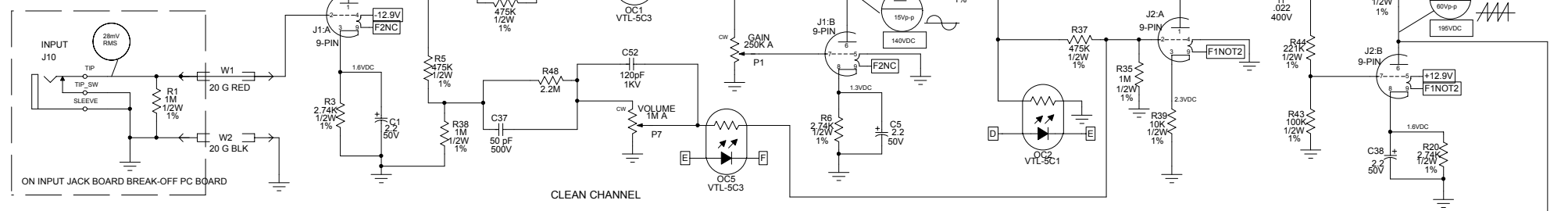


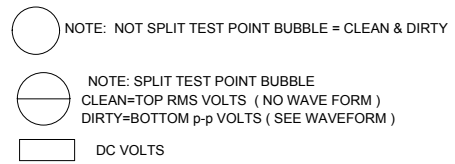
NOTE: TEST POINT CONDITIONS

LINE: 120 Vrms. SPEAKER LOAD: 8 OHM RESISTANCE
 REVERB SEND LOAD: 150 OHM RESISTANCE
 INPUT : 28mVrms @ 500HZ.
 VOLTAGES: ALL DC VOLTAGES MEASURED WITH
 " NO SIGNAL INPUT".
 SETTINGS: GAIN & EQ @ '5', REVERB @ '0'.
 LEVELS @ '10'. PRESENCE & BOOST = 'OFF'



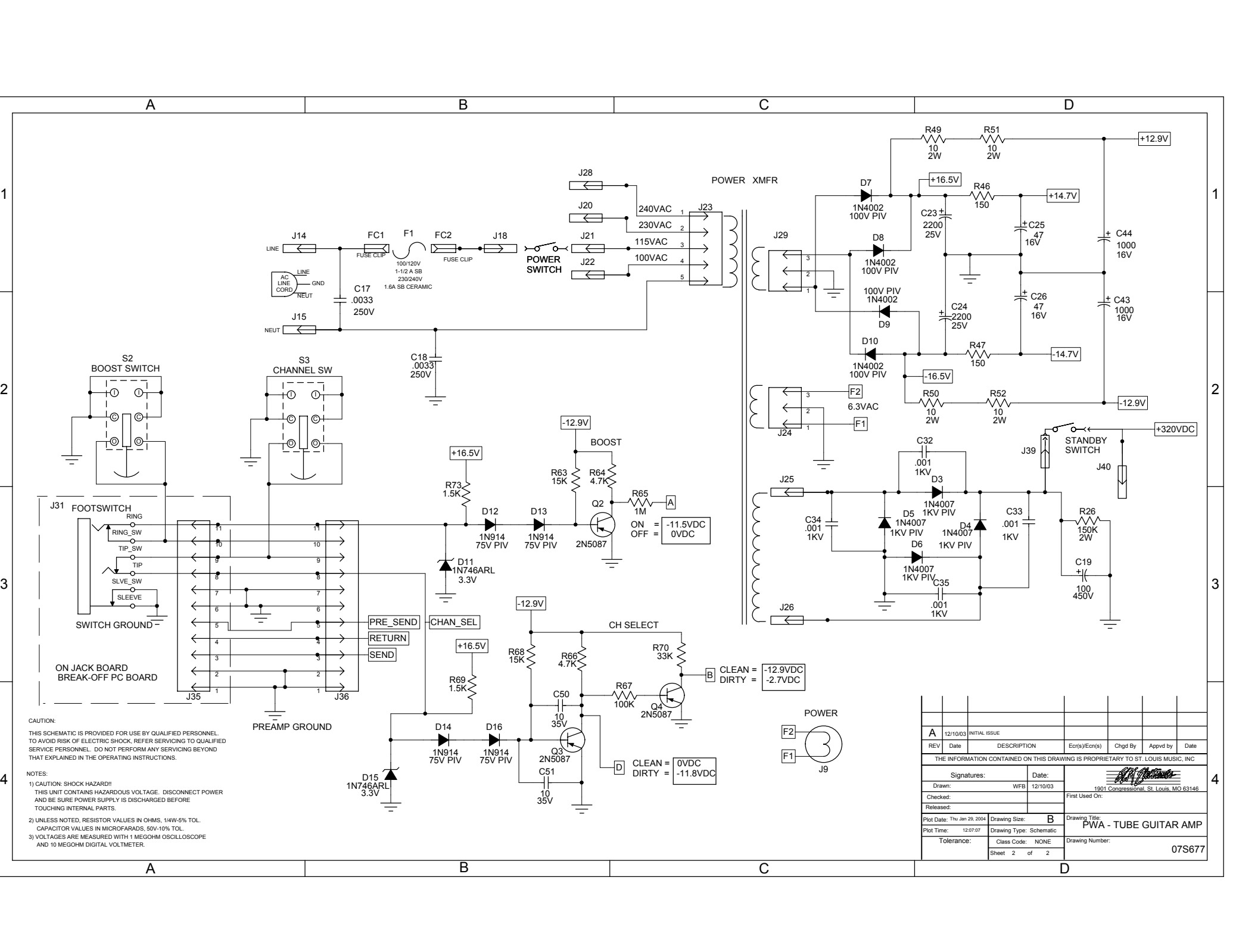
CAUTION:
 THIS SCHEMATIC IS PROVIDED FOR USE BY QUALIFIED PERSONNEL.
 TO AVOID RISK OF ELECTRIC SHOCK, REFER SERVICING TO QUALIFIED
 SERVICE PERSONNEL. DO NOT PERFORM ANY SERVICING BEYOND
 THAT EXPLAINED IN THE OPERATING INSTRUCTIONS.

- NOTES:
 1) CAUTION: SHOCK HAZARD!!
 THIS UNIT CONTAINS HAZARDOUS VOLTAGE. DISCONNECT POWER
 AND BE SURE POWER SUPPLY IS DISCHARGED BEFORE
 TOUCHING INTERNAL PARTS.
 2) UNLESS NOTED, RESISTOR VALUES IN OHMS, 1/4W-5% TOL.
 CAPACITOR VALUES IN MICROFARADS, 50V-10% TOL.
 3) VOLTAGES ARE MEASURED WITH 1 MEGOHM OSCILLOSCOPE
 AND 10 MEGOHM DIGITAL VOLTMETER.




Power Table			
RefDes	+14.7V	-14.7V	
IC1 & IC2	8	4	

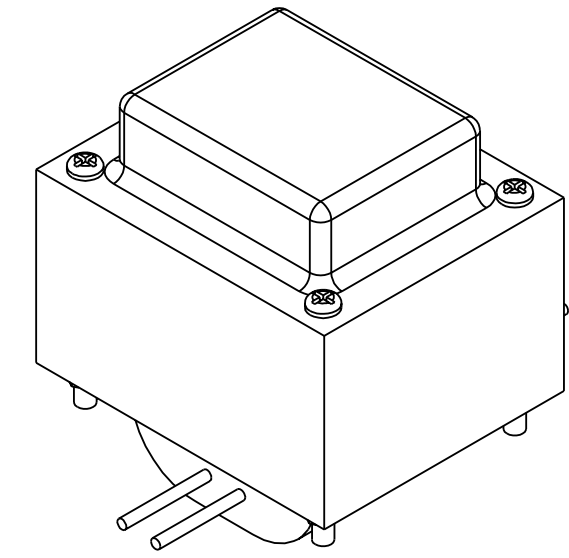
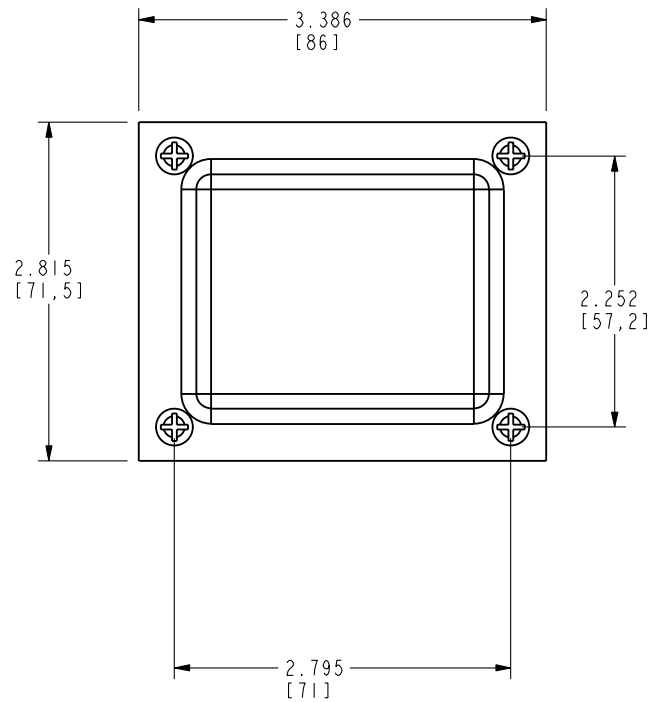
A	12/10/03	INITIAL ISSUE				
REV	Date	DESCRIPTION	Ecr(s)/Ecrn(s)	Chgd By	Appvd by	Date
THE INFORMATION CONTAINED ON THIS DRAWING IS PROPRIETARY TO ST. LOUIS MUSIC, INC.						
Signatures:		Date:		 1901 Congressional, St. Louis, MO 63146		
Drawn: WFB		12/10/03				
Checked:				First Used On:		
Released:				Drawing Title: PWA - TUBE GUITAR AMP		
Plot Date: Thu Jan 29, 2004		Drawing Size: C		Drawing Number: 07S677		
Plot Time: 12:07:06		Drawing Type: Schematic		Drawing Number: 07S677		
Tolerance:		Class Code: NONE		Sheet 1 of 2		



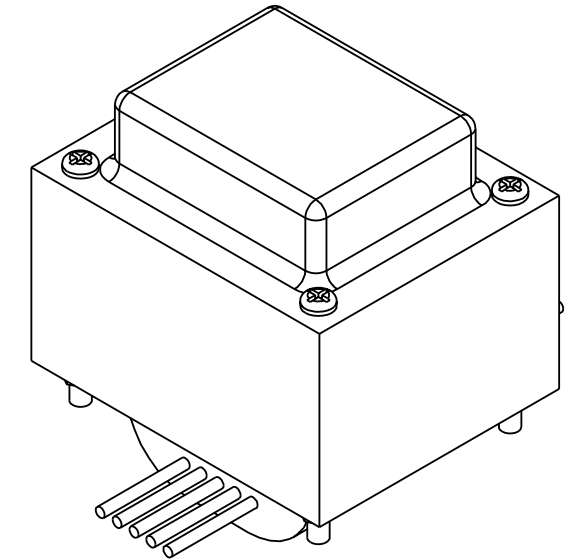
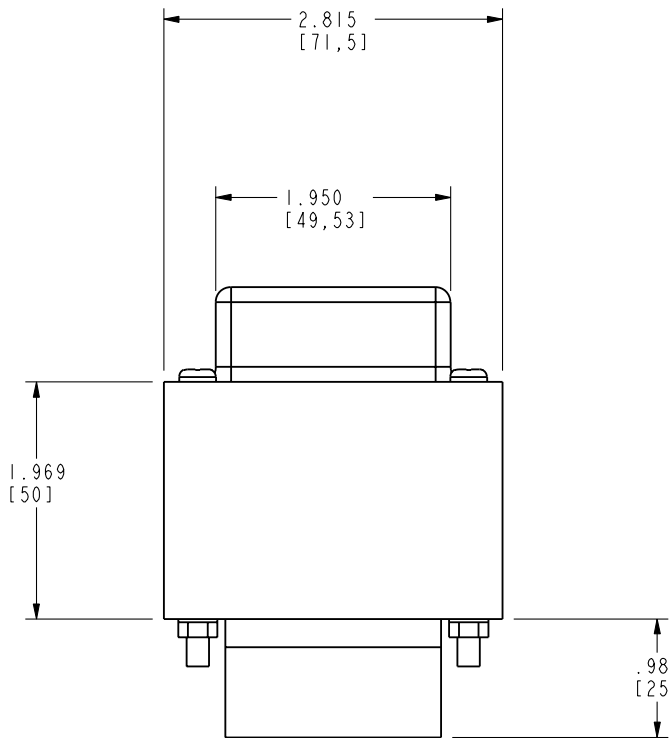
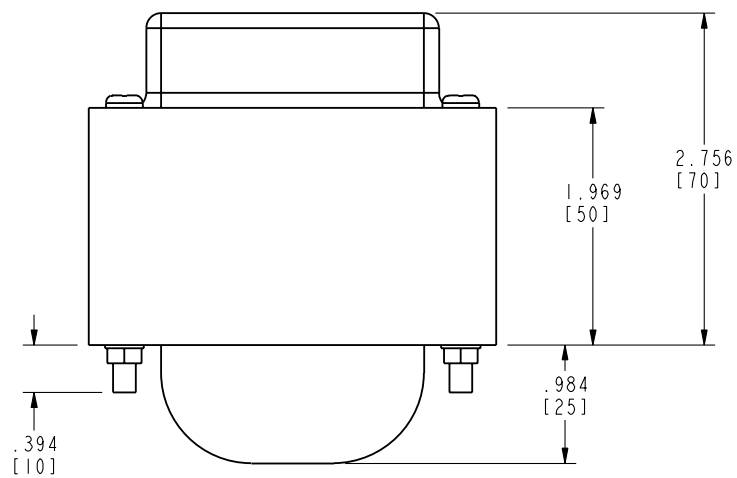
CAUTION:
 THIS SCHEMATIC IS PROVIDED FOR USE BY QUALIFIED PERSONNEL.
 TO AVOID RISK OF ELECTRIC SHOCK, REFER SERVICING TO QUALIFIED
 SERVICE PERSONNEL. DO NOT PERFORM ANY SERVICING BEYOND
 THAT EXPLAINED IN THE OPERATING INSTRUCTIONS.

- NOTES:
- 1) CAUTION: SHOCK HAZARD!!
 THIS UNIT CONTAINS HAZARDOUS VOLTAGE. DISCONNECT POWER
 AND BE SURE POWER SUPPLY IS DISCHARGED BEFORE
 TOUCHING INTERNAL PARTS.
 - 2) UNLESS NOTED, RESISTOR VALUES IN OHMS, 14W-5% TOL.
 CAPACITOR VALUES IN MICROFARADS, 50V-10% TOL.
 - 3) VOLTAGES ARE MEASURED WITH 1 MEGOHM OSCILLOSCOPE
 AND 10 MEGOHM DIGITAL VOLTMETER.

REV	Date	DESCRIPTION	Ecr(s)/Ecn(s)	Chgd By	Appvd by	Date
A	12/10/03	INITIAL ISSUE				
THE INFORMATION CONTAINED ON THIS DRAWING IS PROPRIETARY TO ST. LOUIS MUSIC, INC						
Signatures:		Date:		 1901 Congressional, St. Louis, MO 63146		
Drawn: WFB		Date: 12/10/03		First Used On:		
Checked:		Released:		Plot Date: Thu Jan 29, 2004		
Plot Time: 12:07:07		Drawing Size: B		Drawing Title: PWA - TUBE GUITAR AMP		
Tolerance:		Class Code: NONE		Drawing Number: 07S677		
Sheet 2 of 2						



-02



-41

SOURCE CONTROL DRAWING

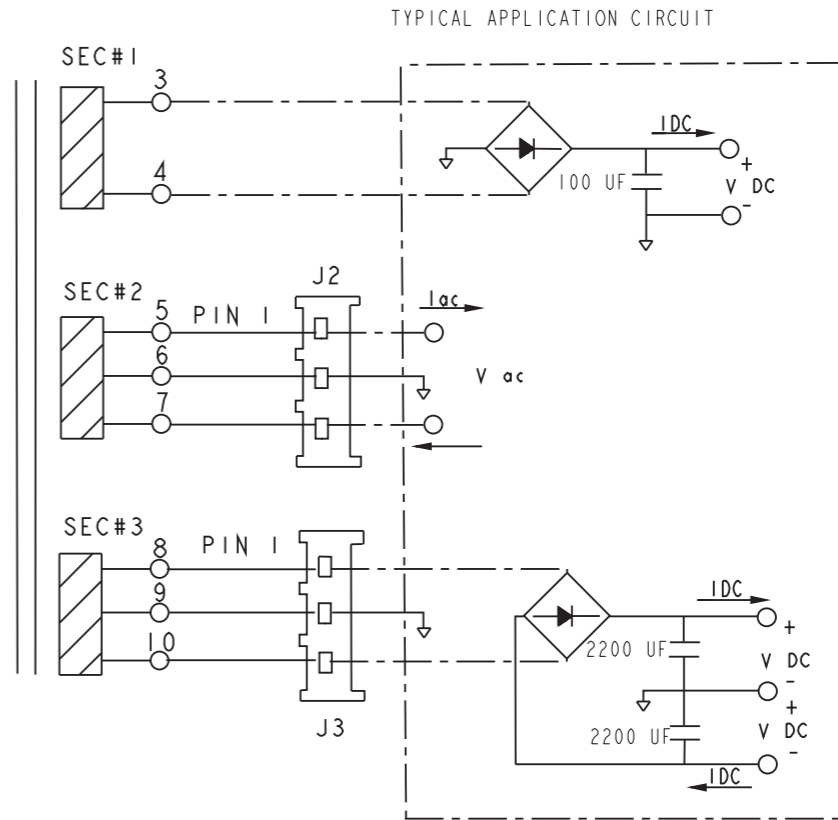
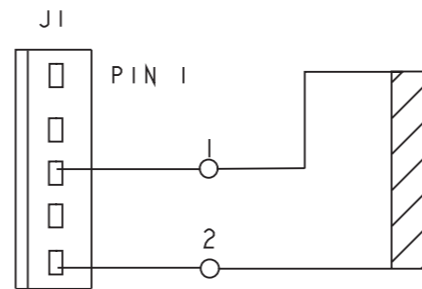
APPROVED SAMPLE #	VENDOR PRINT FILE #	SLM PART #	NAME & ADDRESS OF VENDOR
CMEC1202	VPF00122	94-269-02	CHUANG MEEI ELEC. KAOSIUNG, TAIWAN
CMEC1202	VPF00122	94-269-41	CHUANG MEEI ELEC. KAOSIUNG, TAIWAN

1	08/19/04	ADD CIRCUIT SCHEMATIC UPDATE SPEC TABLES	N01579	DDG		
0	01/06/03	CONTROL ISSUE		JRC		
REV:	DATE:	DESCRIPTION	ECR/ECN NO:	CHNG'D BY:	APPR'D BY:	DATE:
THE INFORMATION CONTAINED ON THIS DRAWING IS PROPRIETARY TO ST. LOUIS MUSIC, INC.						
SIGNATURES:				DATE:		
DRAWN:	JRC			19-Aug-04		
CHK'D:						
RLS'D:						
TOLERANCES:				DRAWING SIZE: 26 by 16.8		DRAWING TITLE:
				DRAWING TYPE:		TRANSFORMER
				CLASS CODE:		DRAWING NO.:
SCALE: 1.000				SHEET: 1 of 3		94-269-XX

SM Electronics
St. Louis, Missouri U.S.A.

94-269-02 Lead Wire Specification					
Item	Description	Color	Gage	Length	Terminals
1	Primary: 120V Hot	BLACK	18 AWG	8.0 inches	J1 Pos.#3, 5-pin Alex 8099 Housing, 94T terminal
2	Primary: N	WHITE	18 AWG	8.0 inches	J1 Pos.#5, 5-pin Alex 8099 Housing, 94T terminal
3	Secondary #1	RED	18 AWG	8.0 inches	0.250x0.032 Fully Insulated Female Spade
4	Secondary #1	RED	18 AWG	8.0 inches	0.250x0.032 Fully Insulated Female Spade
5	Secondary #2	ORANGE	18 AWG	9.0 inches	J2 Pos.#1, 3-pin JST .156 ctn. Housing & Crimp Terminal
6	Secondary #2 : Center Tap	YELLOW	18 AWG	9.0 inches	J2 Pos.#2, 3-pin JST .156 ctn. Housing & Crimp Terminal
7	Secondary #2	ORANGE	18 AWG	9.0 inches	J2 Pos.#3, 3-pin JST .156 ctn. Housing & Crimp Terminal
8	Secondary #3	RED	18 AWG	6.0 inches	J3 Pos.#1, 3-pin JST .156 ctn. Housing & Crimp Terminal
9	Secondary #3 : Center Tap	GREEN	18 AWG	6.0 inches	J3 Pos.#2, 3-pin JST .156 ctn. Housing & Crimp Terminal
10	Secondary #3	RED	18 AWG	6.0 inches	J3 Pos.#3, 3-pin JST .156 ctn. Housing & Crimp Terminal

Note: Wire lengths are measured from transformer endbell to termination housing



-02

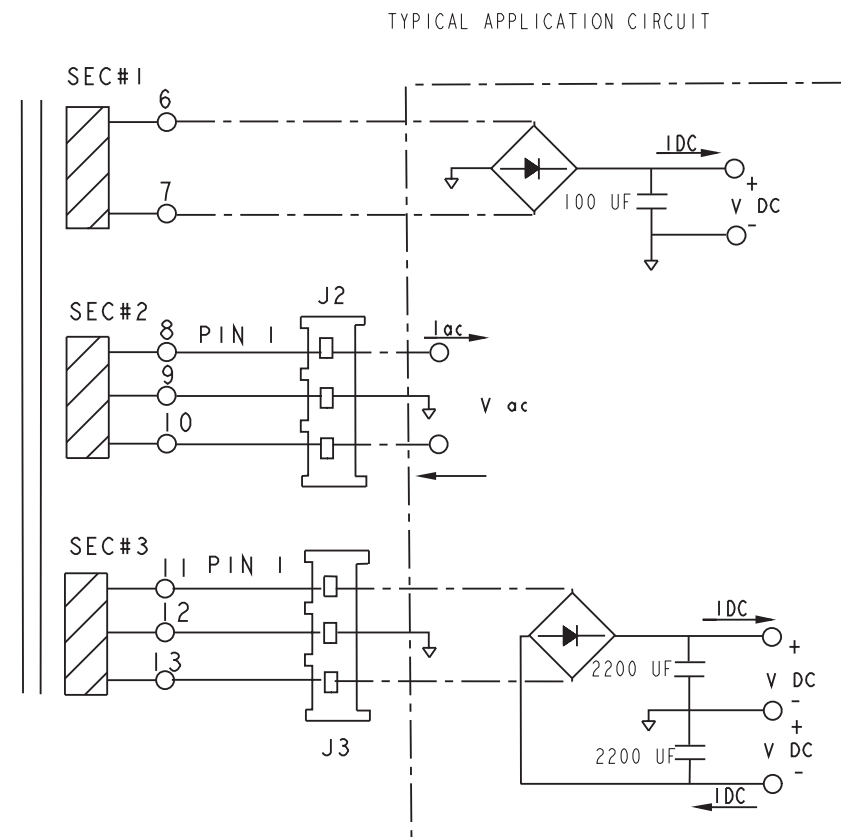
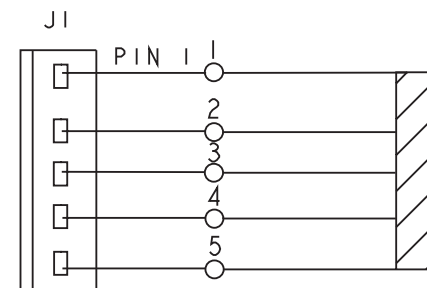
94-269-02 Functional Specification					
Service Type: Audio Power Amplifier Temperature Class: Class B max.					
Compliance Notes: 1. Transformer must comply with UL1411, UL6500, CSA E60065, and CE E60065 Standards 2. Transformer must be marked to identify manufacturer and SLME Part Number					
Construction Notes: 1. Low radiated feild intensity is required - windings are to be wound atevenly spaced turns around the full circumference of the core. 2. Magnetized current at high line (110%) of supply voltage must be less than two times the magnetizing current at minimum line (90%) of supply voltage.					
Electrical Specifications at Load					
Item	Description (Ref. Schematic)	Minimum/Nominal Line		Max. High Line (110%)	
		Voltage	Current	Voltage	Current
Primary 120V	1 Line Hot 2 Line N	120Vac 60Hz	---	132Vac 60Hz	---
Secondary #1	3 & 4 Output	+315 Vdc	0.35 Adc	+348.0 Vdc	0.10 Adc
Secondary #2	5 & 7 Output, 6 Center Tap	6.3 Vac	3.0 Aac	7.0 Vac	0.10 Aac
Secondary #3	8 & 10 Output, 9 Center Tap	±16.0 Vdc	0.30 Adc	±17.75 Vdc	0.05 Adc

Note: "-" indicates data not relivent to functional specifications

1	08/19/04	ADD CIRCUIT SCHEMATIC UPDATE SPEC TABLES	N01579	DDG		
0	01/06/03	CONTROL ISSUE		JRC		
REV:	DATE:	DESCRIPTION	ECR/ECN NO:	CHNG'D BY:	APPR'D BY:	DATE:
THE INFORMATION CONTAINED ON THIS DRAWING IS PROPRIETARY TO ST. LOUIS MUSIC, INC.						
SIGNATURES:			DATE:			
DRAWN:	JRC		19-Aug-04			
CHK'D:						
RLS'D:						
TOLERANCES:	DRAWING SIZE: 26 by 16.8		DRAWING TITLE:			
	DRAWING TYPE:		TRANSFORMER			
	CLASS CODE:		DRAWING NO.:			
SCALE:	0.500	SHEET:	2	of	3	94-269-XX

94-269-41 Lead Wire Specification					
Item	Description	Color	Gage	Length	Terminals
1	Primary: 240V Hot	BROWN	18 AWG	8.0 inches	J1 Pos.#1, 5-pin Alex 8099 Housing, 94T terminal
2	Primary: 230V Hot	GRY/WHT	18 AWG	8.0 inches	J1 Pos.#2, 5-pin Alex 8099 Housing, 94T terminal
3	Primary: 120V Hot	BLACK	18 AWG	8.0 inches	J1 Pos.#3, 5-pin Alex 8099 Housing, 94T terminal
4	Primary: 100V Hot	BLUE	18 AWG	8.0 inches	J1 Pos.#4, 5-pin Alex 8099 Housing, 94T terminal
5	Primary: N	WHITE	18 AWG	8.0 inches	J1 Pos.#5, 5-pin Alex 8099 Housing, 94T terminal
6	Secondary #1	RED	18 AWG	8.0 inches	0.250x0.032 Fully Insulated Female Spade
7	Secondary #1	RED	18 AWG	8.0 inches	0.250x0.032 Fully Insulated Female Spade
8	Secondary #2	ORANGE	18 AWG	9.0 inches	J2 Pos.#1, 3-pin JST .156 ctn. Housing & Crimp Terminal
9	Secondary #2 : Center Tap	YELLOW	18 AWG	9.0 inches	J2 Pos.#2, 3-pin JST .156 ctn. Housing & Crimp Terminal
10	Secondary #2	ORANGE	18 AWG	9.0 inches	J2 Pos.#3, 3-pin JST .156 ctn. Housing & Crimp Terminal
11	Secondary #3	RED	18 AWG	6.0 inches	J3 Pos.#1, 3-pin JST .156 ctn. Housing & Crimp Terminal
12	Secondary #3 : Center Tap	GREEN	18 AWG	6.0 inches	J3 Pos.#2, 3-pin JST .156 ctn. Housing & Crimp Terminal
13	Secondary #3	RED	18 AWG	6.0 inches	J3 Pos.#3, 3-pin JST .156 ctn. Housing & Crimp Terminal

Note: Wire lengths are measured from transformer endbell to termination housing



-41

94-269-41 Functional Specification					
Service Type: Audio Power Amplifier Temperature Class: Class B max.					
Compliance Notes: 1. Transformer must comply with UL1411, UL6500, CSA E60065, and CE E60065 Standards 2. Transformer must be marked to identify manufacturer and SLME Part Number					
Construction Notes: 1. Low radiated field intensity is required - windings are to be wound at evenly spaced turns around the full circumference of the core. 2. Magnetized current at high line (110%) of supply voltage must be less than two times the magnetizing current at minimum line (90%) of supply voltage.					
Electrical Specifications at Load					
Item	Description (Ref. Schematic)	Minimum/Nominal Line		Max. High Line (110%)	
		Voltage	Current	Voltage	Current
Primary 240V	1 Line Hot 5 Line N	240Vac 50Hz	---	264Vac 50Hz	---
Primary 230V	2 Line Hot 5 Line N	230Vac 50Hz	---	254Vac 50Hz	---
Primary 120V	3 Line Hot 5 Line N	120Vac 60Hz	---	132Vac 60Hz	---
Primary 100V	4 Line Hot 5 Line N	100Vac 50/60Hz	---	110Vac 50/60Hz	---
Secondary #1	6 & 7 Output	+315 Vdc	0.35 Adc	348.0 Vdc	0.10 Adc
Secondary #2	8 & 10 Output, 9 Center Tap	6.3 Vac	3.0 Aac	7.0 Vac	0.10 Aac
Secondary #3	11 & 13 Output, 12 Center Tap	±16.0 Vdc	0.30 Adc	±17.75 Vdc	0.05 Adc

Note: "-" indicates data not relevant to functional specifications

SOURCE CONTROL DRAWING

1	08/19/04	ADD CIRCUIT SCHEMATIC UPDATE SPEC TABLE	N01579	DDG		
0	01/06/03	CONTROL ISSUE		JRC		
REV:	DATE:	DESCRIPTION	ECR/ECN NO:	CHNG'D BY:	APPR'D BY:	DATE:
THE INFORMATION CONTAINED ON THIS DRAWING IS PROPRIETARY TO ST. LOUIS MUSIC, INC.						
SIGNATURES:			DATE:			
DRAWN:	JRC		19-Aug-04			
CHK'D:						
RLS'D:						
TOLERANCES:	DRAWING SIZE: 26 by 16.8		DRAWING TITLE:		DRAWING NO.:	
	DRAWING TYPE:		TRANSFORMER			
	CLASS CODE:		DRAWING NO.:		94-269-XX	
SCALE:	0.500	SHEET:	3 of 3			