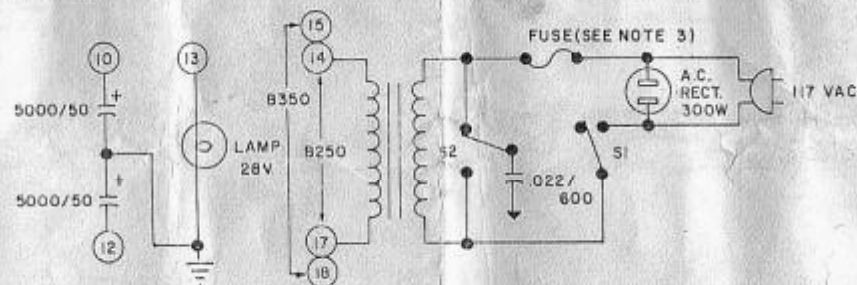


# NOTES:

(1) RESISTORS - VALUES ARE IN OHMS,  
(K=1000) 1/2 WATT, 5%  
UNLESS OTHERWISE NOTED.

(2) CAPACITORS - VALUES ARE IN MFDS,  
UNLESS OTHERWISE NOTED.

(3) B250 - 3A-3AG  
B350 - 3A-5L0-BL0



**EMC**

ELECTRONIC MUSIC  
CORP.  
1230 E. 286 ST.  
CLEVELAND, O. 44132

PRE-AMP AND POWER SUPPLY  
B250 AND B350 BASS AMPLIFIERS

DATE: 6-1-72