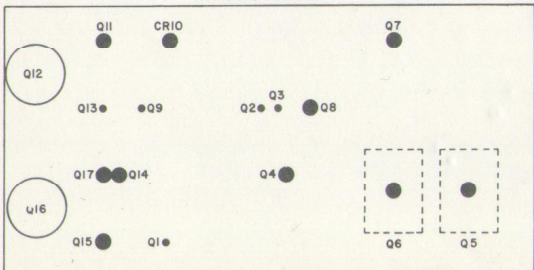


**POWER AMP
+ 8 - REG
PC5032**

- NOTES:
1. ALL RESISTORS ARE 1/2W, 10%, UNLESS NOTED.
 2. ALL CAPACITOR VALUES ARE IN MICROFARADS, UNLESS NOTED.
 3. ALL TRANSISTORS ARE PET8002 OR SE4002, UNLESS NOTED.
 4. DIODE CR3 IS MOUNTED IN A CLIP ON THE CHASSIS.
 5. TRANSISTORS Q18 & Q19 ARE MOUNTED IN A BRACKET ON THE CHASSIS.
 6. VOLTAGES ARE WITH POWER ON, ALL CONTROLS FULL ON, NO SIGNAL AND NO LOAD.

TRANSISTOR DIAGRAM



REV	CD	NO	DATE	BY
1	2.38	5-70	JTS	
2	2.65	7-70	JTS	
3	2.73	7-70	JTS	

PART NUMBER	DESCRIPTION	ITEM
DRN	DATE	TOLERANCES
SPATS	5-70	NONE
NAME	Schematic - POWER	
SCALE	AMR + 8 - REG. PC5032	
NONE	SHR	PART NUMBER
OF 1		002-5032-00

Custom ELECTRONICS, INC.
CHANUTE, KAN. 66720