

GAIN @ 10, SHAPE @ 5, A LEVEL @ 5,  
 GAIN @ 5, TONES @ 5, CCRAVE @ 0, & MASTER @ 18  
 120WAC NO LOAD. SWAP INPUT 500mV P-P

TEST POINT	WAVE SHAPE	A.C. P-P	D.C. SPECIAL CONDITIONS
1	~	180mV	—
2	~	180mV	—
3	~	3.5V	CHANNEL A SELECTED
4	~	3V	CHANNEL A SELECTED
5	~	1.5V	CHANNEL A SELECTED
6	~	200mV	—
7	~	800mV	—
8	~	25V	+4V
9	~	14V	—
10	~	100mV	—
11	~	13V	—
12	~	—	7V
13	~	—	12V
14	~	—	10V
15	~	4 RIPPLE 40V	CHANNEL A SELECTED
16	~	4 RIPPLE 40V	CHANNEL A SELECTED
17	~	—	10V
18	~	—	-15V
19	~	380mV	—

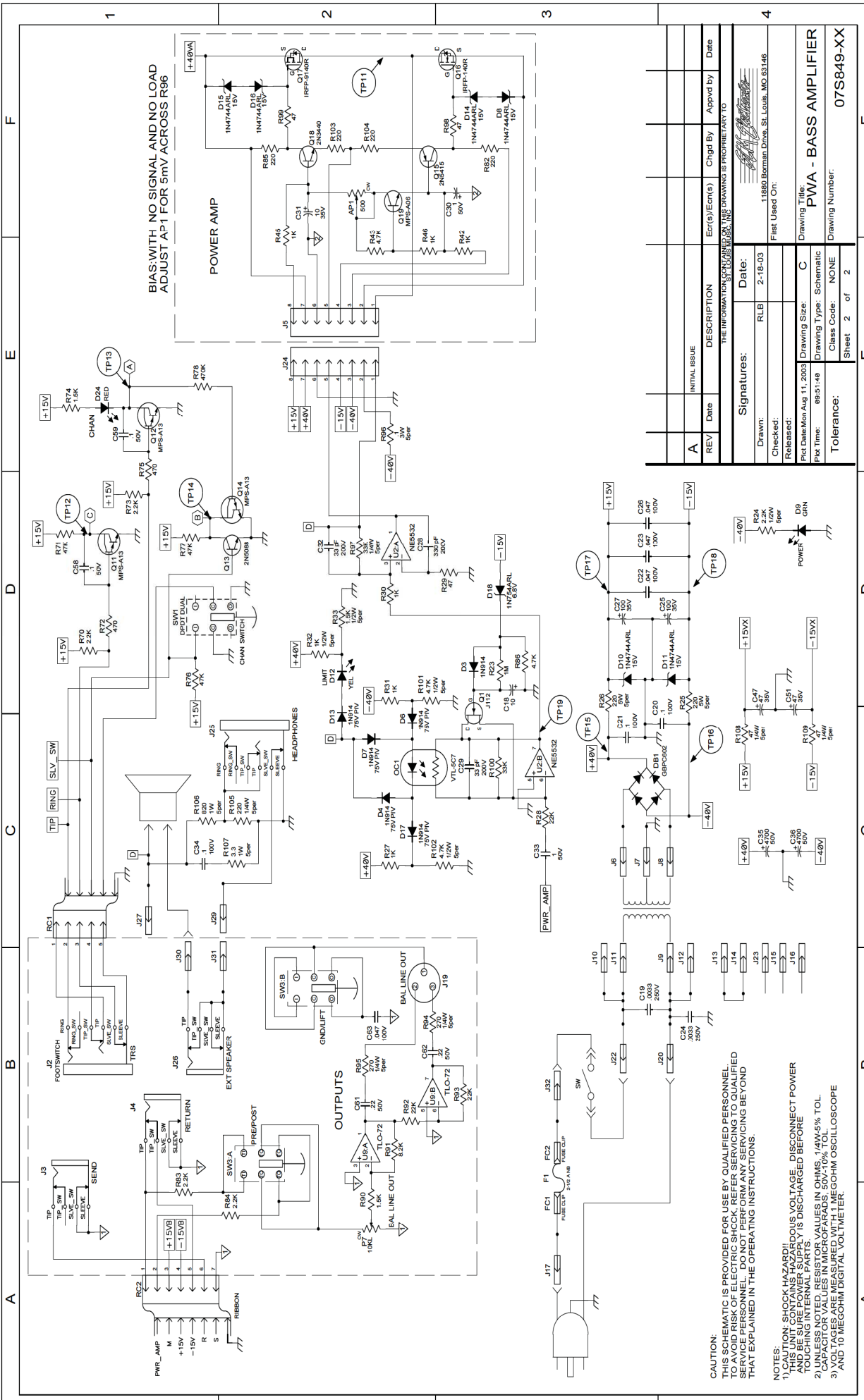
Power Table

Ref. Des.	Device (Type)	Package	C	GRD	+15V	-15V	+15VX	-15VX	+15V6	-15V6
U1	5797281	BDP-3	B	4						
U2	5797281	BDP-3	B	4						
U3	5797281	BDP-3	B	4						
U4	5797281	BDP-3	B	4						
U5	5797281	BDP-3	B	4						
U6	5797281	BDP-3	B	4						
U7	5797281	BDP-3	B	4						
U8	5797281	BDP-3	B	4						
U9	5797281	BDP-3	B	4						
U10	5797281	BDP-3	B	4						
U11	5797281	BDP-3	B	4						
U12	5797281	BDP-3	B	4						
U13	5797281	BDP-3	B	4						
U14	5797281	BDP-3	B	4						
U15	5797281	BDP-3	B	4						
U16	5797281	BDP-3	B	4						
U17	5797281	BDP-3	B	4						
U18	5797281	BDP-3	B	4						
U19	5797281	BDP-3	B	4						
U20	5797281	BDP-3	B	4						
U21	5797281	BDP-3	B	4						
U22	5797281	BDP-3	B	4						
U23	5797281	BDP-3	B	4						
U24	5797281	BDP-3	B	4						
U25	5797281	BDP-3	B	4						
U26	5797281	BDP-3	B	4						
U27	5797281	BDP-3	B	4						
U28	5797281	BDP-3	B	4						
U29	5797281	BDP-3	B	4						
U30	5797281	BDP-3	B	4						
U31	5797281	BDP-3	B	4						
U32	5797281	BDP-3	B	4						
U33	5797281	BDP-3	B	4						
U34	5797281	BDP-3	B	4						
U35	5797281	BDP-3	B	4						
U36	5797281	BDP-3	B	4						
U37	5797281	BDP-3	B	4						
U38	5797281	BDP-3	B	4						
U39	5797281	BDP-3	B	4						
U40	5797281	BDP-3	B	4						
U41	5797281	BDP-3	B	4						
U42	5797281	BDP-3	B	4						
U43	5797281	BDP-3	B	4						
U44	5797281	BDP-3	B	4						
U45	5797281	BDP-3	B	4						
U46	5797281	BDP-3	B	4						
U47	5797281	BDP-3	B	4						
U48	5797281	BDP-3	B	4						
U49	5797281	BDP-3	B	4						
U50	5797281	BDP-3	B	4						
U51	5797281	BDP-3	B	4						
U52	5797281	BDP-3	B	4						
U53	5797281	BDP-3	B	4						
U54	5797281	BDP-3	B	4						
U55	5797281	BDP-3	B	4						
U56	5797281	BDP-3	B	4						
U57	5797281	BDP-3	B	4						
U58	5797281	BDP-3	B	4						
U59	5797281	BDP-3	B	4						
U60	5797281	BDP-3	B	4						
U61	5797281	BDP-3	B	4						
U62	5797281	BDP-3	B	4						
U63	5797281	BDP-3	B	4						
U64	5797281	BDP-3	B	4						
U65	5797281	BDP-3	B	4						
U66	5797281	BDP-3	B	4						
U67	5797281	BDP-3	B	4						
U68	5797281	BDP-3	B	4						
U69	5797281	BDP-3	B	4						
U70	5797281	BDP-3	B	4						
U71	5797281	BDP-3	B	4						
U72	5797281	BDP-3	B	4						
U73	5797281	BDP-3	B	4						
U74	5797281	BDP-3	B	4						
U75	5797281	BDP-3	B	4						
U76	5797281	BDP-3	B	4						
U77	5797281	BDP-3	B	4						
U78	5797281	BDP-3	B	4						
U79	5797281	BDP-3	B	4						
U80	5797281	BDP-3	B	4						
U81	5797281	BDP-3	B	4						
U82	5797281	BDP-3	B	4						
U83	5797281	BDP-3	B	4						
U84	5797281	BDP-3	B	4						
U85	5797281	BDP-3	B	4						
U86	5797281	BDP-3	B	4						
U87	5797281	BDP-3	B	4						
U88	5797281	BDP-3	B	4						
U89	5797281	BDP-3	B	4						
U90	5797281	BDP-3	B	4						
U91	5797281	BDP-3	B	4						
U92	5797281	BDP-3	B	4						
U93	5797281	BDP-3	B	4						
U94	5797281	BDP-3	B	4						
U95	5797281	BDP-3	B	4						
U96	5797281	BDP-3	B	4						
U97	5797281	BDP-3	B	4						
U98	5797281	BDP-3	B	4						
U99	5797281	BDP-3	B	4						
U100	5797281	BDP-3	B	4						

CAUTION:  
 THIS SCHEMATIC IS PROVIDED FOR USE BY QUALIFIED PERSONNEL.  
 TO AVOID RISK OF ELECTRIC SHOCK, REFER SERVICING TO QUALIFIED  
 PERSONNEL. THE INFORMATION CONTAINED HEREIN IS PROPRIETARY TO  
 THAT EXPLAINED IN THE OPERATING INSTRUCTIONS.

NOTES:  
 1) CAUTION: SHOCK HAZARD!!  
 THIS UNIT CONTAINS HAZARDOUS VOLTAGE. DISCONNECT POWER  
 BEFORE SERVICING. CAPACITORS MUST BE DISCHARGED BEFORE  
 TOUCHING INTERNAL PARTS.  
 2) UNLESS NOTED, RESISTOR VALUES IN OHMS, 1/4W-5% TOL.  
 3) CAPACITOR VALUES IN MICROFARADS. 50V-10% TOL.  
 4) 100 OHM 1% DIGITAL VOLTMETER.  
 5) AND 10 MEGOHM DIGITAL VOLTMETER.

REV	INITIAL ISSUE	DESCRIPTION	Est(s)/Ecn(s)	Chgd By	Appvd by	Date
A		THE INFORMATION CONTAINED HEREIN IS PROPRIETARY TO				
		Signature:				
		Date:				
		Drawn:				
		Checked:				
		Released:				
		Tolerance:				
		Drawing Size:				
		Drawing Type:				
		Class Code:				
		Sheet 1 of 2				



BIAS WITH NO SIGNAL AND NO LOAD  
ADJUST AP 1 FOR 5mV ACROSS R96

POWER AMP

- CAUTION: SHOCK HAZARD!!  
THIS SCHEMATIC IS PROVIDED FOR USE BY QUALIFIED PERSONNEL.  
TO AVOID PERSONAL INJURY OR PROPERTY DAMAGE, REFER TO THE QUALIFIED  
TECHNICIAN'S MANUAL FOR THE PWA-1100. DO NOT ATTEMPT TO REPAIR OR  
REPLACE PARTS WITHOUT THE NECESSARY TRAINING AND TOOLS THAT ARE  
SPECIFIED IN THE OPERATING INSTRUCTIONS.
- NOTES:  
1) THIS UNIT CONTAINS HAZARDOUS VOLTAGE. DISCONNECT POWER  
BEFORE SERVICING. CAPACITORS MAY BE CHARGED AFTER THE UNIT IS  
DISCONNECTED FROM THE POWER SOURCE.  
2) UNLESS NOTED, RESISTOR VALUES IN OHMS, 1/4W-5% TOL.  
3) UNLESS NOTED, CAPACITOR VALUES IN MICROFARADS. 50V-10% TOL.  
4) ALL MEASUREMENTS SHOULD BE MADE WITH A 10 MEGOHM DIGITAL VOLTMETER.

REV	DATE	DESCRIPTION	ENG(S)/ECN(S)	CHG'D BY	APPR'D BY	DATE
A		INITIAL ISSUE				

THE INFORMATION CONTAINED IN THIS DRAWING IS PROPRIETARY TO	
Signatures:	Date:
Drawn: RLB	2-18-03
Released:	
First Used On:	
11880 Bowman Drive, St. Louis, MO 63146	

Plot Date: Mon Aug 11, 2003	Drawing Title: PWA - BASS AMPLIFIER
Plot Time: 09:51:48	Drawing Type: Schematic
Tolerance:	Class Code: NONE
Sheet 2 of 2	Drawing Number: 07S849-XX

# INDENTED PARTS LIST BT100Ca

Printed at SLM Electronics

Page: 1

LEVEL	PART NO.	DESCRIPTION	DESCRIPTION2	QUANTITY	UM	MB
0----	BT100Ca	100W 1X15" BASS COMBO	DOMESTIC VERSION	0.00	EA	M
-1---	08-619-01	BT100 COVERED CABINET		1.00	EA	M
--2--	02-450-01	CABINET COVERING GLUE	500 LBS PER DRUM	1.44	LB	B
--2--	04-703-001	BT100 RAW CAB ASSY		1.00	EA	M
---3-	04-703-010	BT100, PANEL BAFFLE		1.00	EA	M
---4-	55-275-01	3/4" 7-PLY MARINETECH	SOLIDCORE PLY END-LO	2.49	FT	B
---3-	04-703-100	BT100, PANEL TOP		1.00	EA	M
---4-	55-175-01	3/4" IND. PARTICLE BD.	BREAK 1/2UNITS ENDLO	2.26	FT	B
---3-	04-703-200	BT100, PANEL SIDE		2.00	EA	M
---4-	55-175-01	3/4" IND. PARTICLE BD.	BREAK 1/2UNITS ENDLO	2.45	FT	B
---3-	04-703-300	BT100, BOTTOM BRD		1.00	EA	M
---4-	55-175-01	3/4" IND. PARTICLE BD.	BREAK 1/2UNITS ENDLO	2.26	FT	B
---3-	04-703-700	BT100, PANEL BACK BRD		1.00	EA	M
---4-	55-175-01	3/4" IND. PARTICLE BD.	BREAK 1/2UNITS ENDLO	2.45	FT	B
---3-	04-703-800	BT100, PANEL TRAY BRD		1.00	EA	M
---4-	55-175-01	3/4" IND. PARTICLE BD.	BREAK 1/2UNITS ENDLO	1.92	FT	B
---3-	04-703-801	BT100 BAFFLE TRAY BRD		1.00	EA	M
---4-	55-175-01	3/4" IND. PARTICLE BD.	BREAK 1/2UNITS ENDLO	0.47	FT	B
---3-	04-703-900	BT100 TOP SIDE CLEAT		2.00	EA	M
---4-	55-175-01	3/4" IND. PARTICLE BD.	BREAK 1/2UNITS ENDLO	0.14	FT	B
---3-	04-703-901	BT100 BOTTOM SIDE	CLEAT	2.00	EA	M
---4-	55-175-01	3/4" IND. PARTICLE BD.	BREAK 1/2UNITS ENDLO	0.04	FT	B
---3-	04-703-902	BT100 BAFFLE CLEAT		1.00	EA	M
---4-	55-377-01	1" GRADE A MDF FIBER-	BOARD 4X8 SHEETS	0.18	FT	B
--2--	26-301-01	BLK SRO		2.59	SY	B
-1---	15B148-20	2-BUTTON FOOTSWITCH		1.00	EA	B
-1---	16-361-01	BT100a CHASSIS ASSY		1.00	EA	M
--2--	07-849-01	BT100 PCB ASSEMBLY		1.00	EA	M
---3-	07-000-00	WAVE SOLDER OPERATION		1.00	EA	M
---4-	01-000-00	NS NO COST PART	DO NOT DELETE THIS R	1.00	EA	B
---3-	07-000-01	GOOP OPERATION		1.00	EA	M
---4-	01-000-00	NS NO COST PART	DO NOT DELETE THIS R	1.00	EA	B
---3-	07A849-01	BT100 PCB SUB ASSY		1.00	EA	M
---4-	06A849-02	BT100 RAW PCB	MOD ON C61 AND C62	1.00	EA	B
---4-	10A102-11	.001 MFD 100V 10% X7R	SA101C102KAA	1.00	EA	B
---4-	10A103-11	.01 MFD 100V 10% X7R	SA201C103KAA	1.00	EA	B
---4-	10A104-01	0.1 MFD 50V 10% X7R	SA305C104KAA	8.00	EA	B
---4-	10A153-01	.015 MFD 50V 10% X7R	SA105C153KAA	4.00	EA	B
---4-	10A221-11	220 PF 100V 10% NPO	SA101A221JAA	1.00	EA	B
---4-	10A222-11	.0022 MFD 100V 10% NPO	SA101C222KAA	1.00	EA	B
---4-	10A223-01	.022 MFD 50V 10% X7R	SA105C223KAA	1.00	EA	B
---4-	10A224-01	.22 MFD 50V 10% X7R	SA305C224KAA	2.00	EA	B
---4-	10A330-21	33 PF 200V 10% NPO	SA102A330JAA	2.00	EA	B
---4-	10A331-21	AI 330PF 200V 10% NPO		1.00	EA	B
---4-	10A332-01	.0033 MFD 100V 10% X7R	SA101C332KAA	2.00	EA	B
---4-	10A471-21	470 PF 200V 10% NPO	MA302A471KAA	1.00	EA	B
---4-	10A473-11	.047 MFD 100V 10% X7R	SA301C473KAA	5.00	EA	B
---4-	10A560-21	.56 PF 200V 5% NPO	SA102A560JAA	4.00	EA	B

Printed on: 7/13/2006 2:42:32 PM

**CRATE** BT100

©2007 LOUD Technologies Inc. All rights reserved

BT100Ca Parts List

PAGE 1

# INDENTED PARTS LIST BT100Ca

Printed at SLM Electronics

LEVEL	PART NO.	DESCRIPTION	DESCRIPTION2	QUANTITY	UM	MB
----	4	10R104-03	.1 MFD RAD POLYCAP			
----	4	10R105-01	1UF 50VDC 10%	3.00	EA	B
----	4	12R105-50	1UF 50V RADIAL TAPED	1.00	EA	B
----	4	12R105-51	1UF 50VNP RADIAL TAPED	4.00	EA	B
----	4	12R106-35	10UF 35V RADIAL TAPED	2.00	EA	B
----	4	12R106-36	10UF 35VNP RADIAL TAPE	3.00	EA	B
----	4	12R107-32	100UF 35V 8 X 11MM	1.00	EA	B
----	4	12R225-50	2.2UF 50V RADIAL TAPED	1.00	EA	B
----	4	12R225-51	2.2UF 50VNP RADIAL TAP	3.00	EA	B
----	4	12R335-51	3.3UF 50VNP RADIAL TAP	1.00	EA	B
----	4	12R476-35	47UF 35V RADIAL TAPED	2.00	EA	B
----	4	17-836-01	.250" PC TAB ON REEL	20.00	EA	B
----	4	21A146-01	1N746ARL 3.3V ZEN DIOD	2.00	EA	B
----	4	21A444-01	1N4744ARL 15V 5% 1WZEN	6.00	EA	B
----	4	21A754-01	1N754ARL 6.8V 1/2W ZEN	1.00	EA	B
----	4	21A914-01	1N914 OR 1N4148 T&R	11.00	EA	B
----	4	37-072-01	TLO-72CP IC CHIP	7.00	EA	B
----	4	37-413-01	CMOS DUAL FLIP/FLOPS	1.00	EA	B
----	4	37-532-01	NE5532 (N/P) DUALOP IC	1.00	EA	B
----	4	76-000-05	22 GA TINNED COPPER	65.00	EA	B
----	4	76-102-01	1K OHM 1/4W 5% RES T&R	14.00	EA	B
----	4	76-103-01	10K OHM 1/4W 5% RES TR	9.00	EA	B
----	4	76-104-01	100K 1/4W 5% RES T&R	6.00	EA	B
----	4	76-105-01	1 MEG 1/4W 5% RES T&R	6.00	EA	B
----	4	76-152-01	1.5K 1/4W 5% RES T&R	2.00	EA	B
----	4	76-153-01	15K OHM 1/4W 5%RES T&R	2.00	EA	B
----	4	76-154-01	150K 1/4W 5% RES T&R	1.00	EA	B
----	4	76-221-01	220 OHM 1/4W 5% RES TR	7.00	EA	B
----	4	76-222-01	2.2K 5% 1/4W RES T&R	8.00	EA	B
----	4	76-223-01	22K OHM 1/4W 5% RES TR	13.00	EA	B
----	4	76-224-01	220K 1/4W 5% RES T&R	2.00	EA	B
----	4	76-271-01	270 OHM 1/4W 5% RES TR	2.00	EA	B
----	4	76-333-01	33K OHM 1/4W 5% RES TR	2.00	EA	B
----	4	76-470-01	47 OHM 1/4W 5% RES T&R	5.00	EA	B
----	4	76-471-01	470 OHM 1/4W 5% RES TR	2.00	EA	B
----	4	76-472-01	4.7K 1/4W 5% RES T&R	3.00	EA	B
----	4	76-473-01	47K 1/4W 5% RES T&R	6.00	EA	B
----	4	76-474-01	470K 1/4W 5% RES T&R	1.00	EA	B
----	4	76-682-01	6.8K 1/4W 5% RES T&R	4.00	EA	B
----	4	76-822-01	8.2K 1/4W 5% RES T&R	1.00	EA	B
----	4	77-102-01	1K 1/2W 5% RES T&R	1.00	EA	B
----	4	77-152-01	1.5K 1/2W 5% RES T&R	1.00	EA	B
----	4	77-222-01	2.2K 1/2W 5% RES T&R	1.00	EA	B
----	4	77-472-01	4.7K 1/2W 5% RES T&R	2.00	EA	B
----	4	78A033-01	3.3OHM 5% 1WATT MET OX	1.00	EA	B
----	4	78A821-01	820 OHM 1W 5% T&R	1.00	EA	B
----	4	96R006-01	MPS-A06	1.00	EA	B
----	4	96R013-01	MPS-A13	3.00	EA	B

Printed on: 7/13/2006 2:42:32 PM

# INDENTED PARTS LIST BT100Ca

Printed at SLM Electronics

LEVEL	PART NO.	DESCRIPTION	DESCRIPTION2	QUANTITY	UM	MB
----	4	96R112-01	J112 FET	1.00	EA	B
----	4	96R175-01	J175 FET TO-92	6.00	EA	B
----	4	96R510-01	2N5210 NPN TO-92	1.00	EA	B
----	4	96R588-01	2N5088 TO-92	3.00	EA	B
----	3	10-332-01	.0033 DISC 20% UL VDE	2.00	EA	B
----	3	12-107-32	100 MFD 35V EL RAD BUL	2.00	EA	B
----	3	12-226-81	22 MFD 50V NP RAD BULK	2.00	EA	B
----	3	12-478-52	4700/50V SNAPIN RADIAL	2.00	EA	B
----	3	17-105-03	3 PIN .1" ST POL LOCK	1.00	EA	B
----	3	17-309-08	MPSS156-8-C HEADER	1.00	EA	B
----	3	17-311-08	MFAS156-8-T R.A. HDR	1.00	EA	B
----	3	21-206-01	KBPC-602 BRIDGE RECTIF	1.00	EA	B
----	3	21-222-01	YELLOW RT ANGLE LED	1.00	EA	B
----	3	21-224-01	RED LED RIGHT ANGLE	1.00	EA	B
----	3	21-227-01	GREEN RT ANGLE LED	1.00	EA	B
----	3	23-309-01	2-1/2A 3AG NORM BLO	1.00	EA	B
----	3	23-926-02	Universal Fuse Clip	2.00	EA	B
----	3	39-116-01	CLIFF S2-BNB-BLK/PC/A	4.00	EA	B
----	3	39-117-01	CLIFF S2-BBB-BLK/PC/A	2.00	EA	B
----	3	39-121-05	DUAL RCA HORIZ MOUNT	1.00	EA	B
----	3	39-308-01	XLR MALE R.A. PC MT	1.00	EA	B
----	3	66-100-01	VTL-5C7 VACTROL	1.00	EA	B
----	3	70-103-77	10KL METAL SHAFT W/NUT	4.00	EA	B
----	3	70-254-77	250KL METALSHAFT W/NUT	1.00	EA	B
----	3	70-503-77	50KL METAL SHAFT W/NUT	6.00	EA	B
----	3	71-501-02	500 OHM TRIMPOT HORIZ.	1.00	EA	B
----	3	78-001-03	.1 OHM 3W 5% RESISTOR	1.00	EA	B
----	3	78-221-05	220 OHM 5WA 5% W/FEET	2.00	EA	B
----	3	88-301-02	DPDT SWITCH W/O BUTTON	1.00	EA	B
----	3	88-303-02	LTPB 2UEE/4UEE NO CAP	2.00	EA	B
----	3	96-014-01	IRFP140 N-CHAN MOSFET	1.00	EA	B
----	3	96-340-01	2N3440 NPN TRANSISTOR	1.00	EA	B
----	3	96-515-01	2N5415 PNP TRANSISTOR	1.00	EA	B
----	3	96-914-01	IRFP9140 P-CHAN MOSFET	1.00	EA	B
----	3	99-195-05	5-PIN 250MM .1" RIBBON	1.00	EA	B
----	3	99-195-27	7 PIN 205mm CABLE	1.00	EA	B
--2--	15-501-01	BT100 SCREENED CHASSIS	MOLEX #A-28100-0628	1.00	EA	B
--2--	30-301-01	CLIFF JACK N/C NUTSET		1.00	EA	B
--2--	30-440-08	#4 X 1/4 IN PLASTITE		6.00	EA	B
--2--	30-631-01	#6 INT LOCKW. ZINC PLT	PPH TFS BLACK ZINC	3.00	EA	B
--2--	30-638-52	6-32 X 3/8 PPH TFS W/		1.00	EA	B
--2--	30-638-53	6-32X3/8" PPH MS SEMS	INT LW SEMS BLK ZINC	2.00	EA	B
--2--	30-639-52	6-32 X 9/16 PPH MS W/	W/INT LOCKW. BLK ZIN	1.00	EA	B
--2--	30-650-53	6-32 X 1/2 PPH MS	INT LW SEMS ZINC	2.00	EA	B
--2--	30-700-01	6-32 HEX KEPNUT ASSY	INT SEMS ZINC	5.00	EA	B
--2--	30-775-01	M7 X .75 DC HEX NUT	ST. W/ZINC PLATE	3.00	EA	B
--2--	30-827-01	#8-32 NUT RETAINER	9.0 X 2.0	11.00	EA	B
--2--	30-834-01	8-32 HEX KEPNUT ASSY	ZINC PLATE	4.00	EA	B

Printed on: 7/13/2006 2:42:32 PM

CRATE

©2007 LOUD Technologies Inc. All rights reserved

BT100Ca Parts List



INDENTED PARTS LIST BT100Ca

Printed at SLM Electronics

LEVEL	PART NO.	DESCRIPTION	DESCRIPTION2	QUANTITY	UM	MB
--2--	30-835-01	8 SAE FLATWASH ZINC	ID AFI STANDARD .188	6.00	EA	B
--2--	35-575-02	BERGQUIST K10-104 INS		2.00	EA	B
--2--	45-224-51	RECT BLK PUSH BUTTON	E-SWITCH #TAD	5.00	EA	B
--2--	45-754-01	BT SERIES GREEN KNOB	W/ SKIRT PANTONE 342	11.00	EA	B
--2--	47-000-02	1/2" SQ.INTER.GRND LAB		1.00	EA	B
--2--	51-232-01	BX-100 XISTOR BRACKET		1.00	EA	B
--2--	68-001-01	4" CABLE TIE 18LBS	BUNDLE -1/16"-7/8"	2.00	EA	B
--2--	85-005-01	BLACK STRAIN RELIEF	SPACER	1.00	EA	B
--2--	85-056-01	1 5/16 X 6-32 HEX ALUM		2.00	EA	B
--2--	85-062-01	1/4" PLASTIC SPACER		2.00	EA	B
--2--	85-100-01	BLACK STRAIN RELIEF	SR 6N3-4	1.00	EA	B
--2--	88-212-01	10AMP SMALL AC SWITCH	WITH "I" MARKING	1.00	EA	B
--2--	94-291-02	94-291-01 REVERS MOUNT		1.00	EA	B
--2--	97-131-08	8 X 8 X 9" HARNESS		1.00	EA	M
--3-	17-300-08	CE156-F-20-8T PIN CON.		2.00	EA	B
--3-	98-209-01	20GA BLUE UL1007 WIRE	5K FT MAX. REEL QTY	72.00	IN	B
--2-	97-152-21	14" 18GA .250/.250 RED		1.00	EA	M
--3-	17-250-02	.250" FULLY INS FASTON	.250 X .032 REELED	2.00	EA	B
--3-	98-182-02	18 GA RED UL1007 WIRE	5K FT MAX. REEL QTY	14.00	IN	B
--2-	97-153-81	8" .187/.250,18GA,BLK		2.00	EA	M
--3-	17-187-01	.187" FULL INS FASTON	.187 X .032 REELED	1.00	EA	B
--3-	17-250-02	.250" FULLY INS FASTON	.250 X .032 REELED	1.00	EA	B
--3-	98-181-01	18 GA BLACK UL1007WIRE	5K FT MAX. REEL QTY	8.00	IN	B
--2-	97-157-01	32".205/.250 BLK WIRE		1.00	EA	M
--3-	17-205-02	.205 X.020 TIN FASTON	22-18ga EXPANDED SLE	1.00	EA	B
--3-	17-250-02	.250" FULLY INS FASTON	.250 X .032 REELED	1.00	EA	B
--3-	98-206-01	20 GA BLACK UL1007WIRE	5K FT MAX. REEL QTY	32.00	IN	B
--2-	97-157-02	32".205/.250 RED WIRE		1.00	EA	M
--3-	17-205-02	.205 X.020 TIN FASTON	22-18ga EXPANDED SLE	1.00	EA	B
--3-	17-250-02	.250" FULLY INS FASTON	.250 X .032 REELED	1.00	EA	B
--3-	98-202-01	20 GA RED UL1007 WIRE	5K FT MAX. REEL QTY	32.00	IN	B
--2-	99-079-01	9' AC CORD ASSY		1.00	EA	B
-1---	18-653-70	BT100 POP BOX		1.00	EA	B
-1---	18-866-06	BT100 SHIP CARTON		1.00	EA	B
-1---	30-612-01	6-18 X 1/2" PPH "A"/T/S	BLACK ZINC	2.00	EA	B
-1---	30-819-10	#9-10 X 1"PPH LO ROOT	#10 HEAD BLACK ZINC	8.00	EA	B
-1---	30-819-51	#8 X 1-3/4 PH OVAL	LO ROOT BLACK ZINC	4.00	EA	B
-1---	30-819-53	#9 w/#10 Head x 1 1/8	Low Root Black Zinc	4.00	EA	B
-1---	30-830-21	#8-32 X 1-1/2 PH OVAL	MS BLACK ZINC	6.00	EA	B
-1---	30-832-01	#8-32 TNUT 1/4"LEBR 3PRG	.209BRDIA.ZINC23/32D	2.00	EA	B
-1---	30-835-71	#8 FLANGED S/STEEL	FINISH WASHER BLK ZI	8.00	EA	B
-1---	30-838-02	8 X 3/4 PH PAN SPECIAL	LEAD SMS TWNFST BLK	16.00	EA	B
-1---	47-078-01	GENERIC LTD WAR CARD		1.00	EA	B
-1---	47-350-02	SERIAL NUMBER LABEL		1.00	EA	B
-1---	47-350-03	SHIP CARTON LABEL		1.00	EA	B
-1---	47-602-01	CRATE-GENERIC HANG TAG		1.00	EA	B
-1---	47-673-01	BT100C OWNERS MANUAL		1.00	EA	B
-1---	47-884-01	BT100 AMP TOPPER		1.00	EA	B

Printed on: 7/13/2006 2:42:32 PM

**CRATE**

BT100

©2007 LOUD Technologies Inc. All rights reserved

BT100Ca Parts List

# INDENTED PARTS LIST BT100Ca

Printed at SLM Electronics

LEVEL	PART NO.	DESCRIPTION	DESCRIPTION2	QUANTITY	UM	MB
-1----	47-906-03	FOOTSWITCH ENCLOSED	LABEL	1.00	EA	B
-1----	51-111-01	PENN 9" STRAP HANDLE	BLACK W/ STEEL INSER	1.00	EA	B
-1----	51-111-02	PENN BLACK PLASTIC	HANDLE ENDS	2.00	EA	B
-1----	51-674-01	BT100 HEX METAL GRILL		1.00	EA	B
-1----	64-559-01	UNIVERSAL SHIPPING PAD	ARCEL MATERIAL	8.00	EA	B
-1----	68-058-01	LOGO		1.00	EA	B
-1----	68-548-01	LRG FRNT CRNR		4.00	EA	B
-1----	68-548-51	LRG REAR CRNR		4.00	EA	B
-1----	68-705-01	42X50 1 MIL HD POLYBAG		1.00	EA	B
-1----	79-001-01	TUNER MODULE	160 PER ROLL CLEAR B	1.00	EA	B
-1----	81-203-01	BLACK RECESS BUMPER	VPF00427	4.00	EA	B
-1----	86-118-14	15" , 40HM, 150W	2.5"VC, 54.7 OZ MAG	1.00	EA	B