

CAUTION:
 THIS SCHEMATIC IS PROVIDED FOR USE BY QUALIFIED PERSONNEL. TO AVOID RISK OF ELECTRIC SHOCK, REFER SERVICING TO QUALIFIED SERVICE PERSONNEL. DO NOT PERFORM ANY SERVICING BEYOND THAT EXPLAINED IN THE OPERATING INSTRUCTIONS.

- NOTES**
- 1) CAUTION: SHOCK HAZARDOUS!
 THIS UNIT CONTAINS HAZARDOUS VOLTAGE. DISCONNECT POWER AND BE SURE POWER SUPPLY IS DISCHARGED BEFORE TOUCHING INTERNAL PARTS.
 - 2) UNLESS NOTED, RESISTOR VALUES IN OHMS, 1/4W-5% TOL. CAPACITOR VALUES IN MICROFARADS, 50V-10% TOL.
 - 3) VOLTAGES ARE MEASURED WITH 1 MEGOHM OSCILLOSCOPE AND 10 MEGOHM DIGITAL VOLTMETER.
 - 4) CHASSIS GROUND ∇ DIRTY GROUND ∇ AUDIO GROUND ∇

TEST POINT CHART

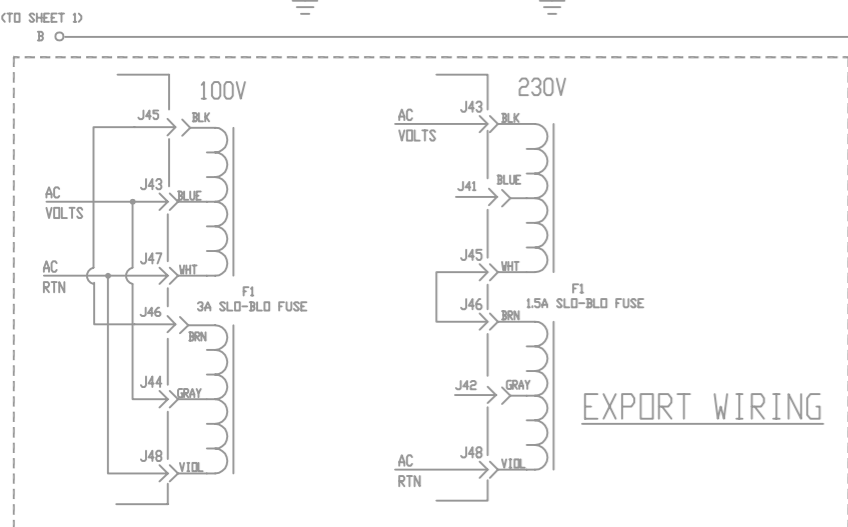
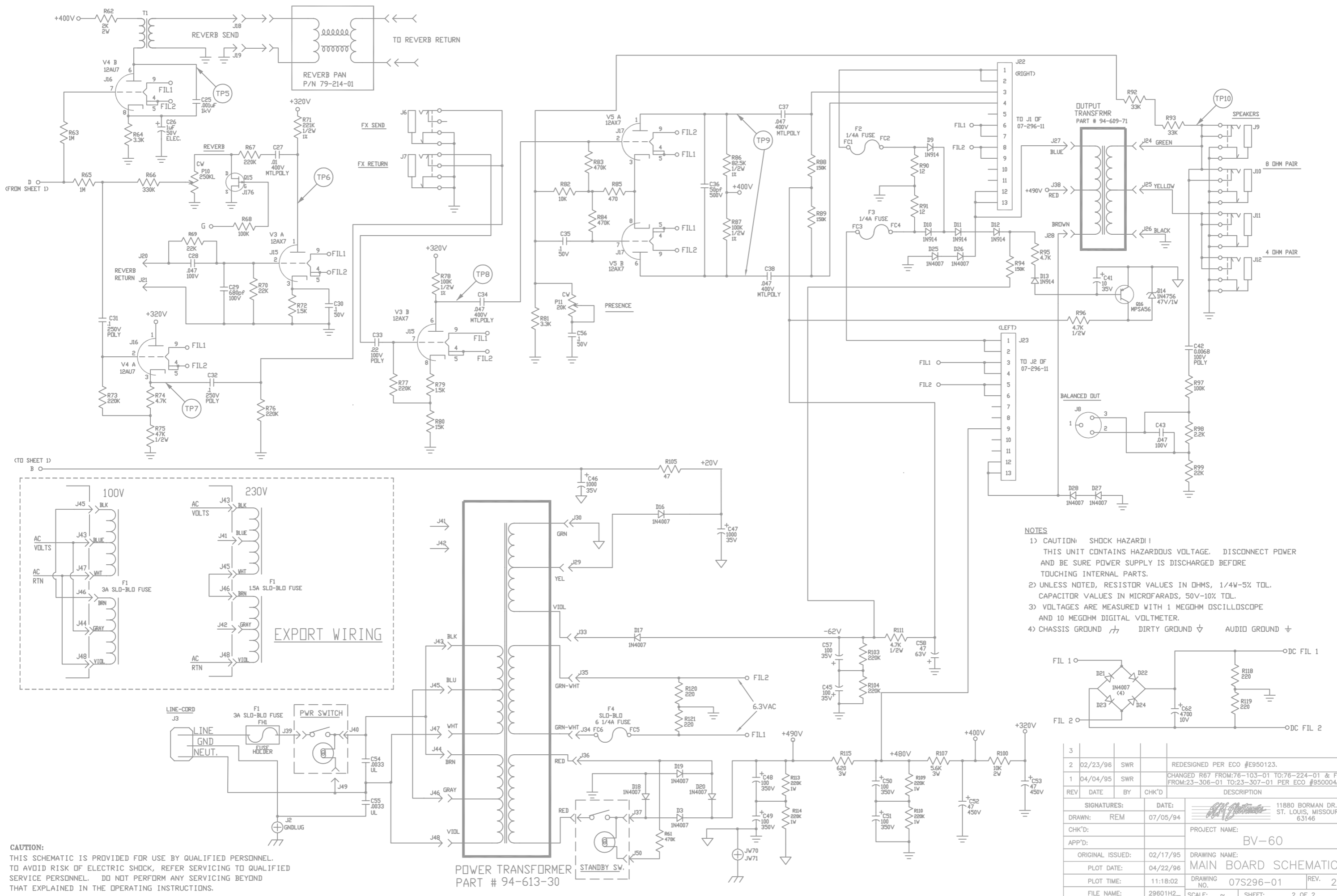
T.P.	D.C. VOLTAGE NO SIGNAL (v)	SIGNAL CHANNEL 1 ACTIVE (Vp-p) 4nVRMS INPUT	SIGNAL CHANNEL 2 ACTIVE (Vp-p) 1nVRMS INPUT
1	190	0.4	0.1
2	190	2.0	0.4
3	160	0.8	0
4	140	11	60
5	380	80	-
6	140	3 (V/ 30nVRMS @ REVERB RETURN)	-
7	120	1.8	1.8
8	210	0	0
9	250	110	110
10	0	55	55
11	-	0.2VDC REVERB OFF; 18VDC REVERB ON	-
12	-	18VDC	0.2VDC
13	-	0.2VDC	18VDC

1KHZ SIGNAL AS ABOVE @ INPUT. ALL CONTROLS @ '0' EXCEPT REVERB AND PRESENCE @ '0', BRIGHT AND BOOST @ 'OUT', 0 OHM LOAD, 150 OHM LOAD ON REVERB.

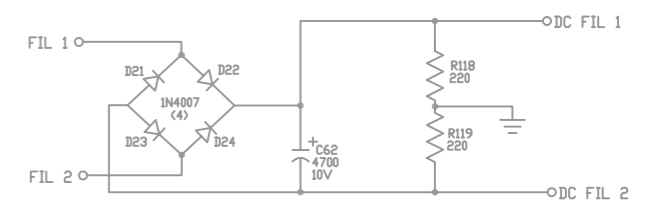
NOT USED
 C40
 C61
 J31
 J32
 R112
 R116
 R117

SIGNATURED:	DATE:	11880 BORMAN DR. ST. LOUIS, MISSOURI 63146
DRAWN: REM	7/01/94	PROJECT NAME: BV-60
CHK'D:		DRAWING NAME: MAIN BOARD SCHEMATIC
APP'D:		DRAWING NO. 07S296-01 REV. 2
ORIGINAL ISSUED: 02/17/95		SCALE: ~ SHEET: 1 OF 2
PLOT DATE: 04/22/96		
PLOT TIME: 11:18:02		
FILE NAME: 29601H2.		

REV	DATE	BY	CHK'D	DESCRIPTION
3				
2	02/23/96	SWR		REDESIGNED PER ECO #E950123.
1	04/04/95	SWR		CHANGED R87 FROM:78-103-01 TO:78-224-01 & F4 FROM:23-306-01 TO:23-307-01 PER ECO #950004A.



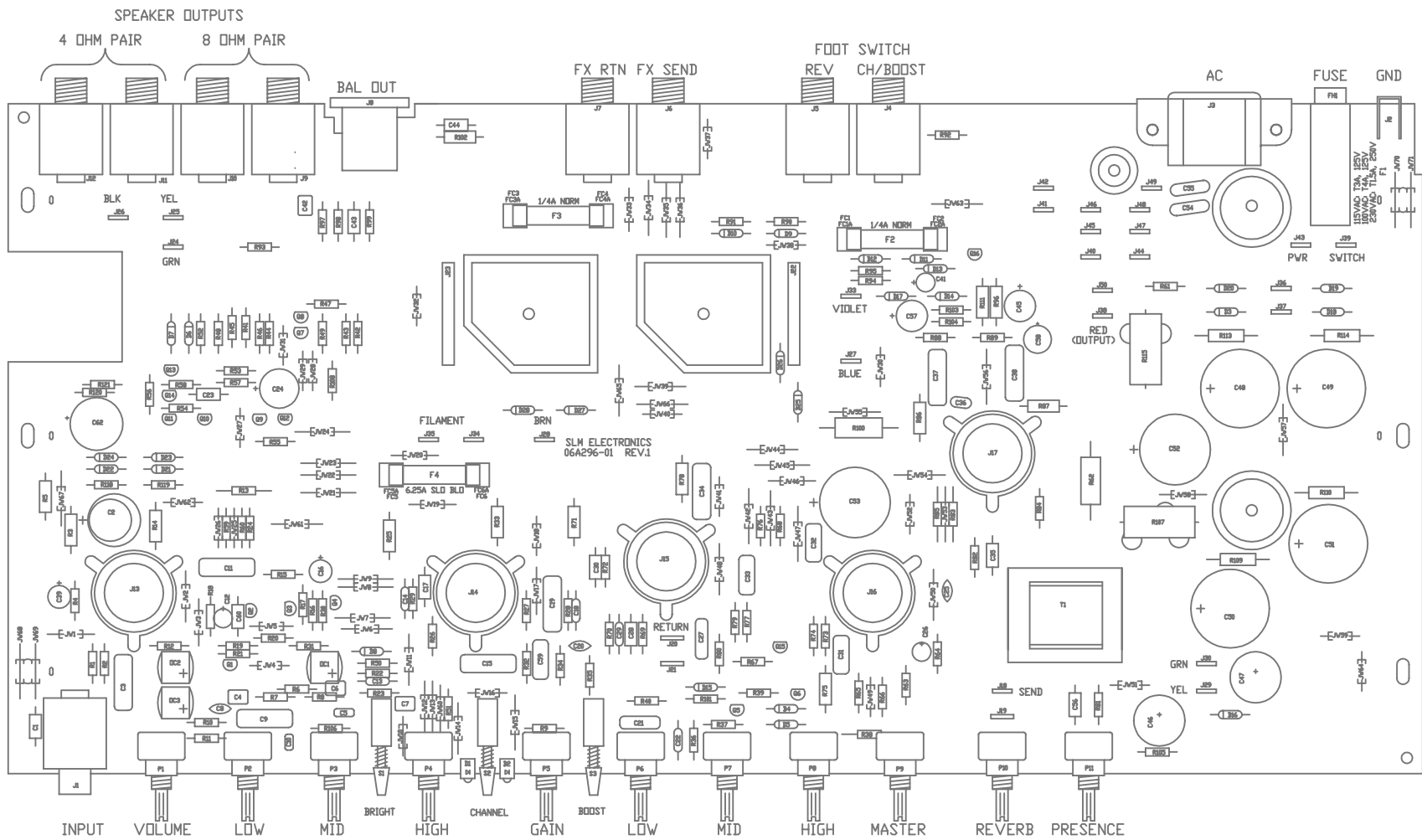
- NOTES**
- 1) CAUTION: SHOCK HAZARD! THIS UNIT CONTAINS HAZARDOUS VOLTAGE. DISCONNECT POWER AND BE SURE POWER SUPPLY IS DISCHARGED BEFORE TOUCHING INTERNAL PARTS.
 - 2) UNLESS NOTED, RESISTOR VALUES IN OHMS, 1/4W-5% TOL. CAPACITOR VALUES IN MICROFARADS, 50V-10% TOL.
 - 3) VOLTAGES ARE MEASURED WITH 1 MEGOHM OSCILLOSCOPE AND 10 MEGOHM DIGITAL VOLTMETER.
 - 4) CHASSIS GROUND \equiv DIRTY GROUND ∇ AUDIO GROUND \pm



3					
2	02/23/96	SWR			REDESIGNED PER ECO #E950123.
1	04/04/95	SWR			CHANGED R67 FROM:76-103-01 TO:76-224-01 & F4 FROM:23-306-01 TO:23-307-01 PER ECO #950004A.
REV	DATE	BY	CHK'D		DESCRIPTION
SIGNATURES:		DATE:		11880 BORMAN DR. ST. LOUIS, MISSOURI 63146	
DRAWN:	REM	07/05/94		PROJECT NAME:	
CHK'D:				BV-60	
APP'D:				DRAWING NAME:	
ORIGINAL ISSUED:	02/17/95			MAIN BOARD SCHEMATIC	
PLOT DATE:	04/22/96			DRAWING NO.	07S296-01
PLOT TIME:	11:18:02			REV.	2
FILE NAME:	29601H2_	SCALE:	~	SHEET:	2 OF 2

CAUTION:
THIS SCHEMATIC IS PROVIDED FOR USE BY QUALIFIED PERSONNEL. TO AVOID RISK OF ELECTRIC SHOCK, REFER SERVICING TO QUALIFIED SERVICE PERSONNEL. DO NOT PERFORM ANY SERVICING BEYOND THAT EXPLAINED IN THE OPERATING INSTRUCTIONS.

POWER TRANSFORMER
PART # 94-613-30




3				
②	02/23/96	SWR		REDESIGNED PER ECO #E950123
◇	04/05/95	SWR		CHANGED R67 FROM:76-103-01 TO:76-224-01 & F4 FROM:23-306-01 TO:23-307-01 PER ECO #950004A.
REV	DATE	BY	CHK'D	DESCRIPTION
SIGNATURES:		DATE:		 11880 BORMAN DR. ST. LOUIS, MISSOURI 63146
DRAWN: REM		7/01/94		
CHK'D:				PROJECT NAME:
APP'D:				BV-60
ORIGINAL ISSUED:		02/17/95		DRAWING NAME:
PLOT DATE:		04/23/96		MAIN BD. PICTORIAL
PLOT TIME:		09:03:18		DRAWING NO. 07P296-01
FILE NAME:		29601P2_		REV. 2
		SCALE: 1:1		SHEET: 1 OF 3

Table with columns: DESIGNATOR, PART #, DESCRIPTION. Rows include components like AP1 (NOT USED), C1-C62 (resistors, capacitors, diodes), D1-D28 (LEDs), and various electronic components like diodes, capacitors, and resistors.

Table with columns: FC1-FC6, F1-F4, J1-J30, J31-J50, DC1-DC3, P1-P11, Q1-Q16. Descriptions include FUSECLIP, 3 A FUSE, T/S, TUBE_SOCKET, SOCKET, and VTL5C6 OPTO.

Table with columns: R1-R72. Descriptions include various resistor values and part numbers like 76-473-01, 76-105-01, 76-104-02, etc.

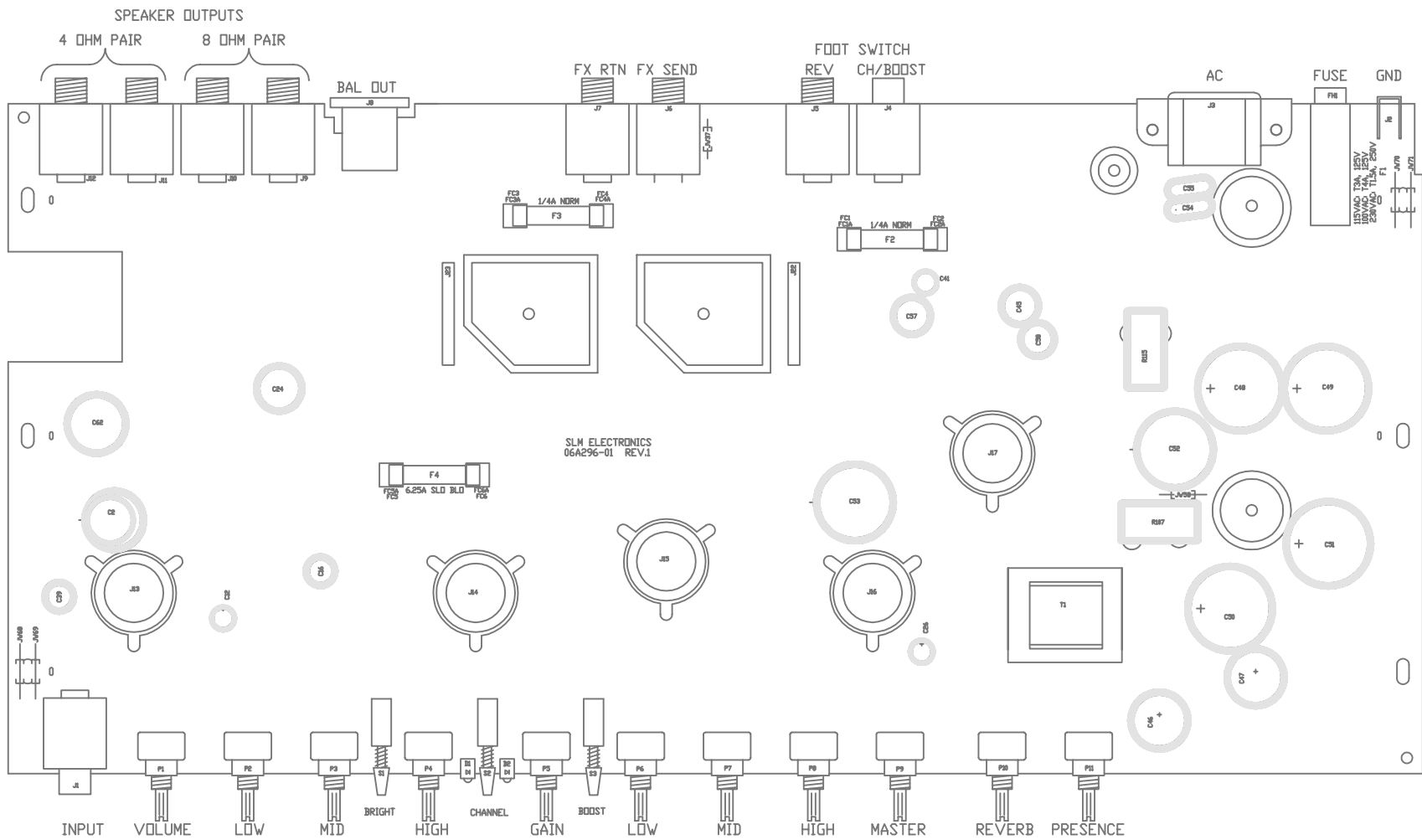
Table with columns: REV, DATE, BY, CHK'D, DESCRIPTION. Revision history for R67 showing changes on 02/23/96 and 04/05/95.

Table with columns: R73-R121, S1-S3, T1, V1-V5, JW1-JW71. Descriptions include various resistor values, DPDT SWITCH, XFMR REV_DRV, and JUMPER WIRE.


Table with columns: QUANTITY, PART #, DESCRIPTION. List of miscellaneous hardware including 06A296-01 PC BOARD, 30-638-53 SCREW, and 30-700-01 NUT.

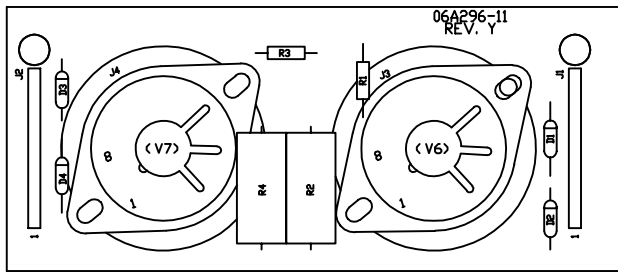
REVISION HISTORY form with columns: REV, DATE, BY, CHK'D, DESCRIPTION. Includes entries for 02/23/96 and 04/05/95.

Signature and project information form. Includes SIGNATURES, DATE (7/01/94), DRAWN (REM), PROJECT NAME (BV-60), PLOT DATE (04/23/96), PLOT TIME (09:03:18), DRAWING NO. (07P296-01), and SHEET (2 OF 3).



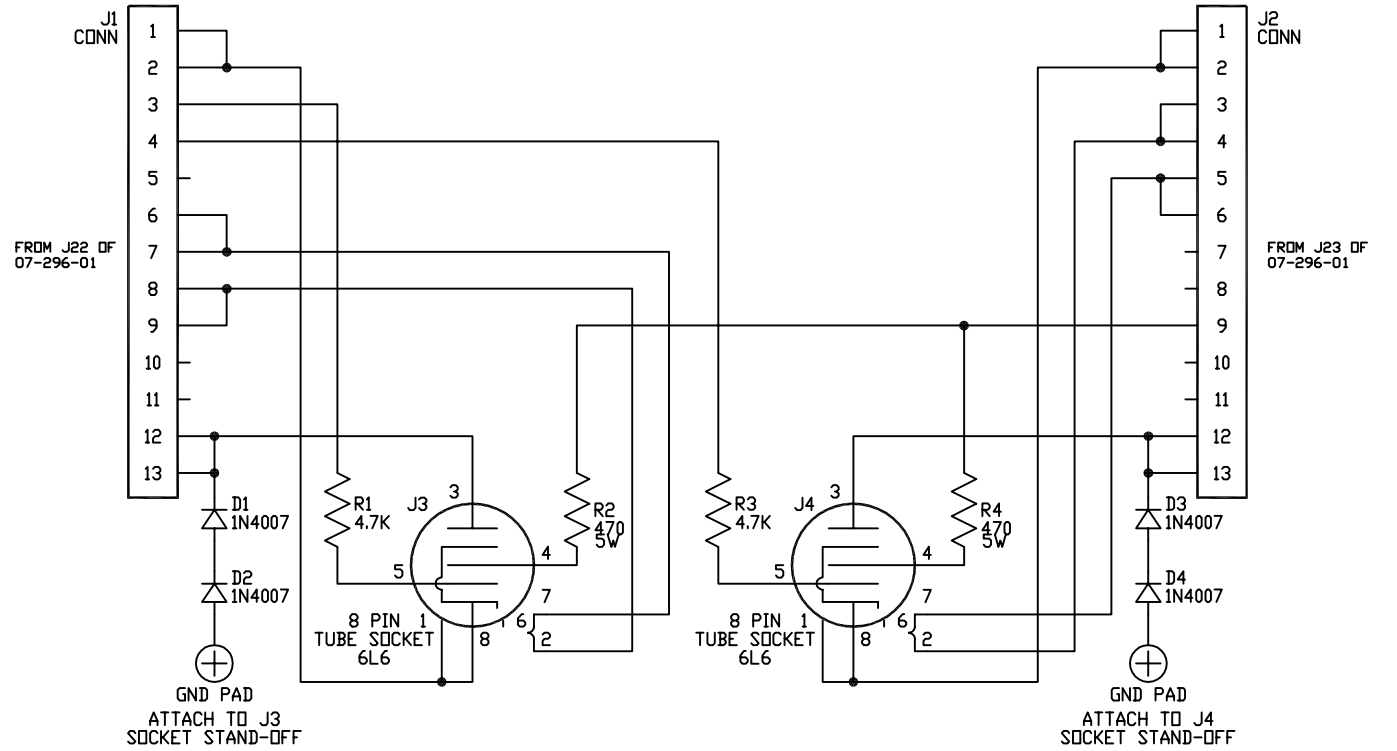
GOOP AS PER USUAL PRACTICE

3				
2	02/23/96	SWR		REDESIGNED PER ECO #E950123
1	04/05/95	SWR		CHANGED R67 FROM:76-103-01 TO:76-224-01 & F4 FROM:23-306-01 TO:23-307-01 PER ECO #950004A.
REV	DATE	BY	CHK'D	DESCRIPTION
SIGNATURES:		DATE:		 11880 BORMAN DR. ST. LOUIS, MISSOURI 63146
DRAWN: REM		7/01/94		
CHK'D:				PROJECT NAME:
APP'D:				BV-60
ORIGINAL ISSUED:		02/17/95	DRAWING NAME:	
PLOT DATE:		04/23/96	GOOP DRAWING	
PLOT TIME:		09:03:18	DRAWING NO.	07P296-01
FILE NAME:		29601P2_	REV.	2
SCALE: 1:1			SHEET: 3 OF 3	



DESIGNATOR PART NUMBER DESCRIPTION

D1	21A407-01	1N4007	
D2	21A407-01	1N4007	
D3	21A407-01	1N4007	
D4	21A407-01	1N4007	
J1	17-101-13	13 PIN	CONNECTOR
J2	17-101-13	13 PIN	CONNECTOR
J3	17-450-08	8 PIN	TUBE SOCKET
J4	17-450-08	8 PIN	TUBE SOCKET
R1	76-472-01	4.7K	
R2	78-471-05	470	5W
R3	76-472-01	4.7K	
R4	78-471-05	470	5W
V6	97-916-02	TESTED 6L6GT TUBES	
V7	97-916-02	TESTED 6L6GT TUBES	
MISC.			
(1)	06A296-11	PC BOARD	
(8)	30-638-53	SCREW	
①(4)	85-133-01	HEX STAND-OFF	



CAUTION:

THIS SCHEMATIC IS PROVIDED FOR USE BY QUALIFIED PERSONNEL. TO AVOID RISK OF ELECTRIC SHOCK, REFER SERVICING TO QUALIFIED SERVICE PERSONNEL. DO NOT PERFORM ANY SERVICING BEYOND THAT EXPLAINED IN THE OPERATING INSTRUCTIONS.

NOTES

- 1) CAUTION: SHOCK HAZARD!!
THIS UNIT CONTAINS HAZARDOUS VOLTAGE. DISCONNECT POWER AND BE SURE POWER SUPPLY IS DISCHARGED BEFORE TOUCHING INTERNAL PARTS.
- 2) UNLESS NOTED, RESISTOR VALUES IN OHMS, 1/4W-5% TOL. CAPACITOR VALUES IN MICROFARADS, 50V-10% TOL.
- 3) VOLTAGES ARE MEASURED WITH 1 MEGOHM OSCILLOSCOPE AND 10 MEGOHM DIGITAL VOLTMETER.
- 4) CHASSIS GROUND \perp CIRCUIT GROUND \perp

①	03/20/95	JCJ		SHORTENED STANDOFFS PER ECO# E0619
REV	DATE	BY	CHK'D	DESCRIPTION
SIGNATURES:		DATE:		11880 BORMAN DR. ST. LOUIS, MISSOURI 63146
DRAWN: ERW		04/27/94		
CHK'D:				PROJECT NAME:
APP'D:				BV-60 TUBE BRD.
ORIGINAL ISSUED:		1		DRAWING NAME:
PLOT DATE:		03/20/95		SCHEMATIC
PLOT TIME:		11:08:14		DRAWING NO. 07P296-11
FILE NAME:		29611P1_		REV. 1_
SCALE: 1:1		SHEET:		1 OF 1