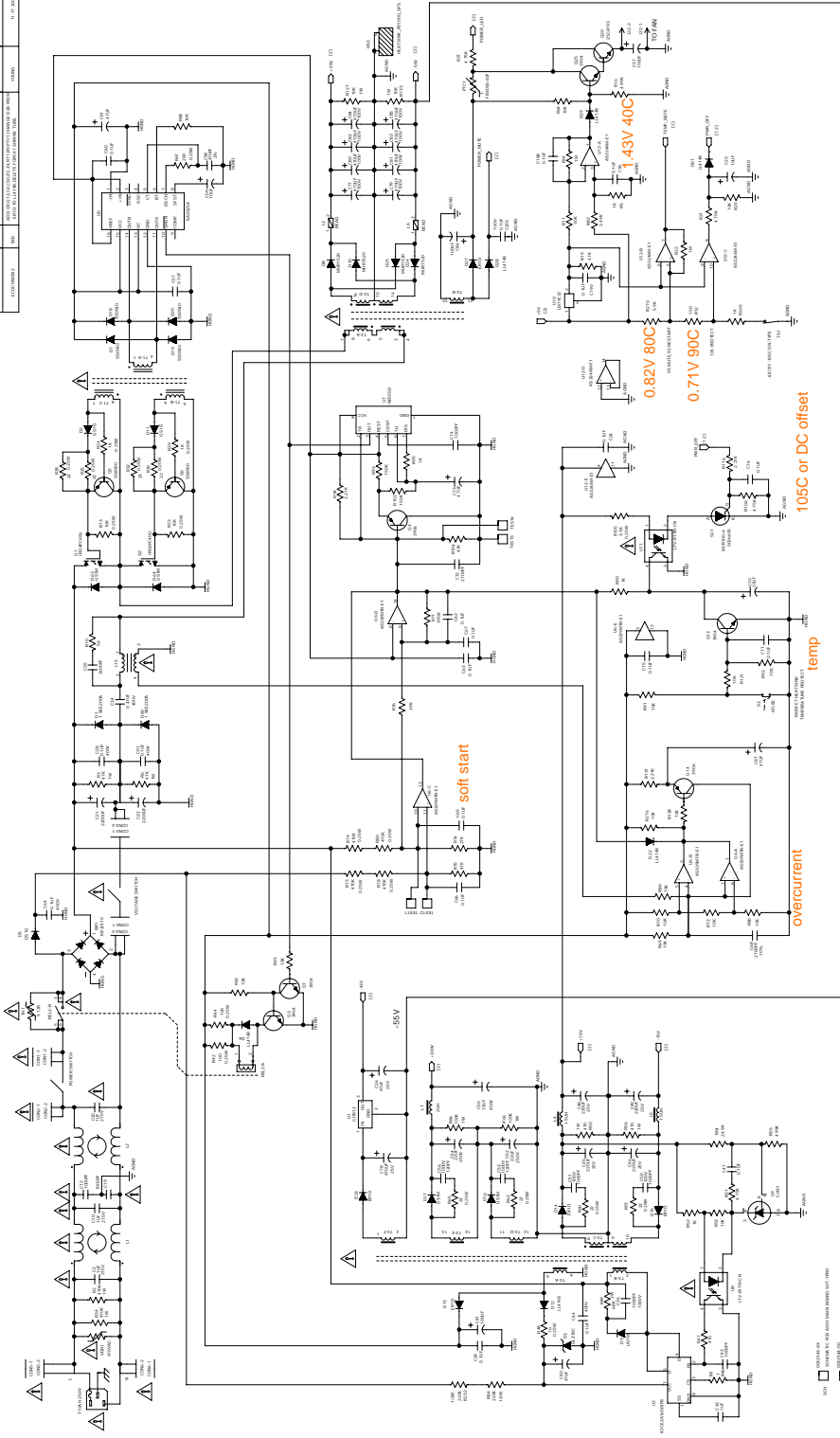


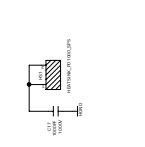
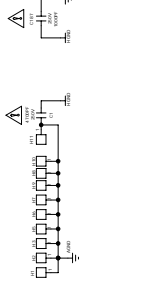
REV. 001	REV. 001	REV. 001	REV. 001	REV. 001
DATE	DESCRIPTION	BY	APPROVED	DATE
03/11/2008	REVISED ELECTRICAL	DM	DM	03/11/2008
03/11/2008	REVISED ELECTRICAL	DM	DM	03/11/2008
03/11/2008	REVISED ELECTRICAL	DM	DM	03/11/2008
03/11/2008	REVISED ELECTRICAL	DM	DM	03/11/2008
03/11/2008	REVISED ELECTRICAL	DM	DM	03/11/2008
03/11/2008	REVISED ELECTRICAL	DM	DM	03/11/2008
03/11/2008	REVISED ELECTRICAL	DM	DM	03/11/2008
03/11/2008	REVISED ELECTRICAL	DM	DM	03/11/2008
03/11/2008	REVISED ELECTRICAL	DM	DM	03/11/2008



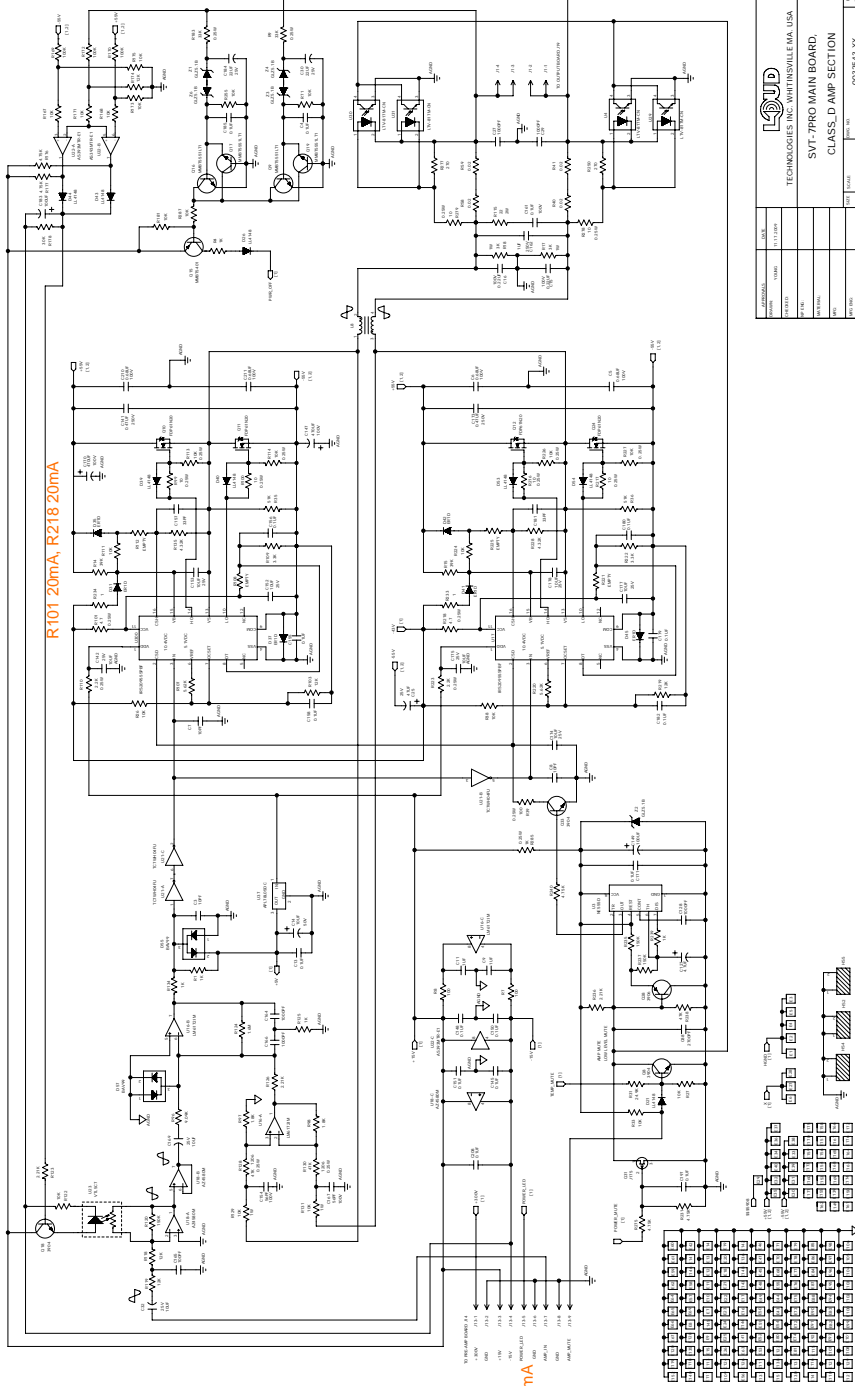
- OVERCURRENT
- TEMP
- SOFT START
- OVERCURRENT
- SOFT START
- TEMP

REV. 001	REV. 001	REV. 001	REV. 001	REV. 001
DATE	DESCRIPTION	BY	APPROVED	DATE
03/11/2008	REVISED ELECTRICAL	DM	DM	03/11/2008
03/11/2008	REVISED ELECTRICAL	DM	DM	03/11/2008
03/11/2008	REVISED ELECTRICAL	DM	DM	03/11/2008
03/11/2008	REVISED ELECTRICAL	DM	DM	03/11/2008
03/11/2008	REVISED ELECTRICAL	DM	DM	03/11/2008
03/11/2008	REVISED ELECTRICAL	DM	DM	03/11/2008
03/11/2008	REVISED ELECTRICAL	DM	DM	03/11/2008
03/11/2008	REVISED ELECTRICAL	DM	DM	03/11/2008
03/11/2008	REVISED ELECTRICAL	DM	DM	03/11/2008

TECHNOLOGIES INC., WOODBRIDGE, VA, USA
   
**SVT-7 PRO MAIN BOARD**
  
**POWER SUPPLY SECTION**



REV.	DESCRIPTION	DATE
1.0	INITIAL DESIGN	11/12/08
1.1	REVISIONS TO BOARD	11/12/08
1.2	REVISIONS TO BOARD	11/12/08
1.3	REVISIONS TO BOARD	11/12/08
1.4	REVISIONS TO BOARD	11/12/08
1.5	REVISIONS TO BOARD	11/12/08
1.6	REVISIONS TO BOARD	11/12/08
1.7	REVISIONS TO BOARD	11/12/08
1.8	REVISIONS TO BOARD	11/12/08
1.9	REVISIONS TO BOARD	11/12/08
2.0	REVISIONS TO BOARD	11/12/08
2.1	REVISIONS TO BOARD	11/12/08
2.2	REVISIONS TO BOARD	11/12/08
2.3	REVISIONS TO BOARD	11/12/08
2.4	REVISIONS TO BOARD	11/12/08
2.5	REVISIONS TO BOARD	11/12/08
2.6	REVISIONS TO BOARD	11/12/08
2.7	REVISIONS TO BOARD	11/12/08
2.8	REVISIONS TO BOARD	11/12/08
2.9	REVISIONS TO BOARD	11/12/08
3.0	REVISIONS TO BOARD	11/12/08



300V 1.2mA  
+15 236mA=  
Heater 168mA + Preamp 68mA  
-15 40.5mA  
=4.5W

REV.	DESCRIPTION	DATE
1.0	INITIAL DESIGN	11/12/08
1.1	REVISIONS TO BOARD	11/12/08
1.2	REVISIONS TO BOARD	11/12/08
1.3	REVISIONS TO BOARD	11/12/08
1.4	REVISIONS TO BOARD	11/12/08
1.5	REVISIONS TO BOARD	11/12/08
1.6	REVISIONS TO BOARD	11/12/08
1.7	REVISIONS TO BOARD	11/12/08
1.8	REVISIONS TO BOARD	11/12/08
1.9	REVISIONS TO BOARD	11/12/08
2.0	REVISIONS TO BOARD	11/12/08
2.1	REVISIONS TO BOARD	11/12/08
2.2	REVISIONS TO BOARD	11/12/08
2.3	REVISIONS TO BOARD	11/12/08
2.4	REVISIONS TO BOARD	11/12/08
2.5	REVISIONS TO BOARD	11/12/08
2.6	REVISIONS TO BOARD	11/12/08
2.7	REVISIONS TO BOARD	11/12/08
2.8	REVISIONS TO BOARD	11/12/08
2.9	REVISIONS TO BOARD	11/12/08
3.0	REVISIONS TO BOARD	11/12/08

**LOUD**  
TECHNOLOGIES INC. QUINCYVILLE MA USA  
SVT-7PRO MAIN BOARD,  
CLASS. D AMP SECTION  
0002843 AX  
REV. 3.0  
DATE 11/12/08  
DRAWN BY  
CHECKED BY

REV.	DATE	BY
3.0	11/12/08	