

REVISIONS C (260100)

DRAWN BHK

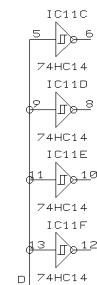
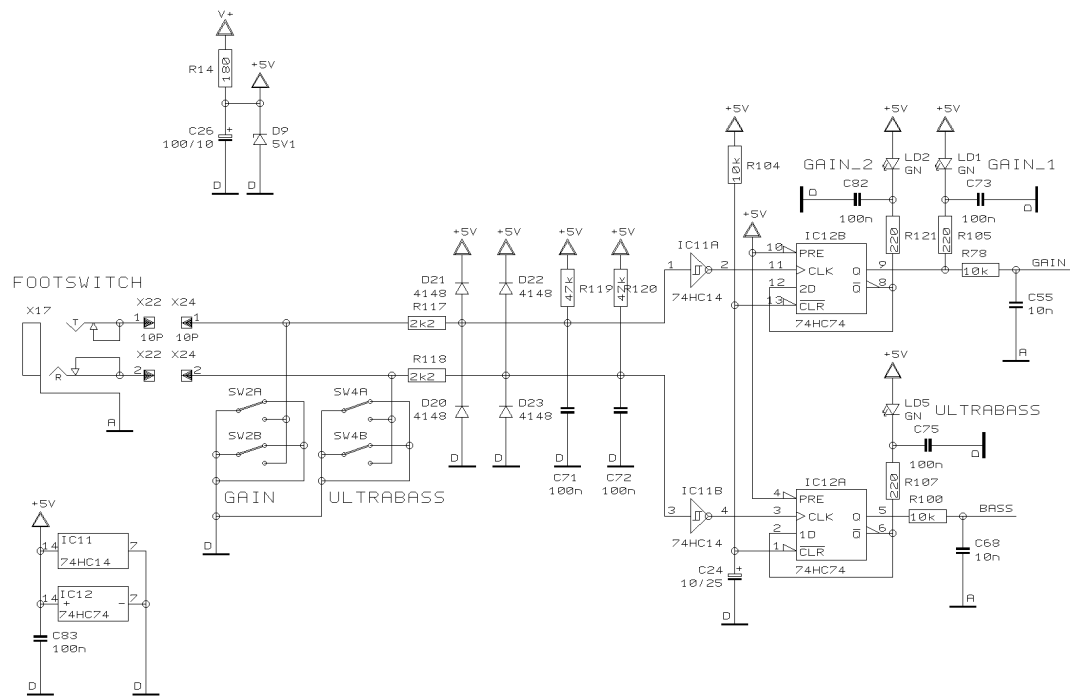
CHECKED

DATE 19.02. 1  
10:34

BEHRINGER®  
Specialized Studio Equipment

PROJECT  
BX1200  
ULTRABASS  
INPUT SECTION

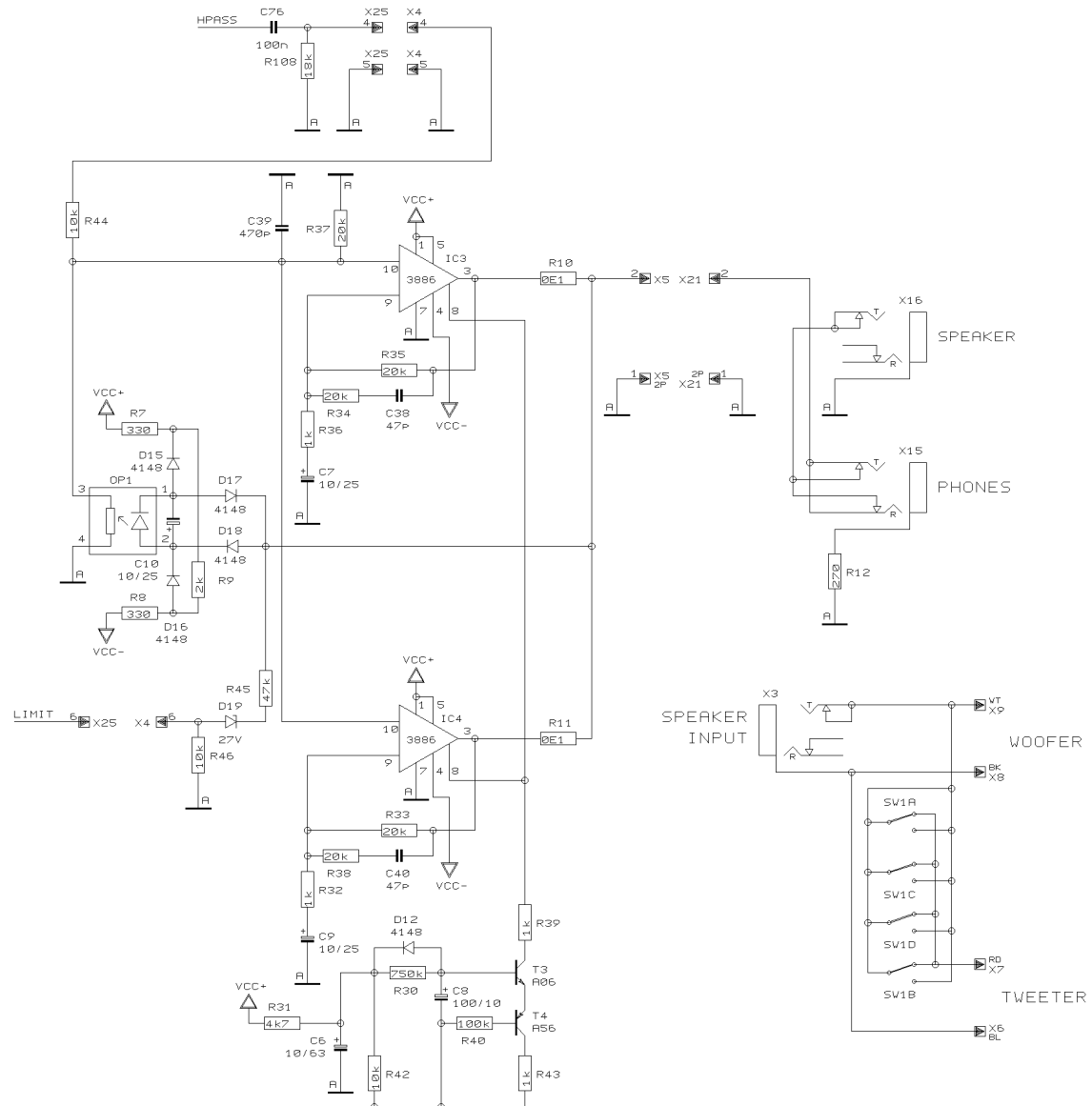
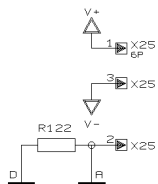
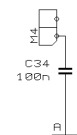
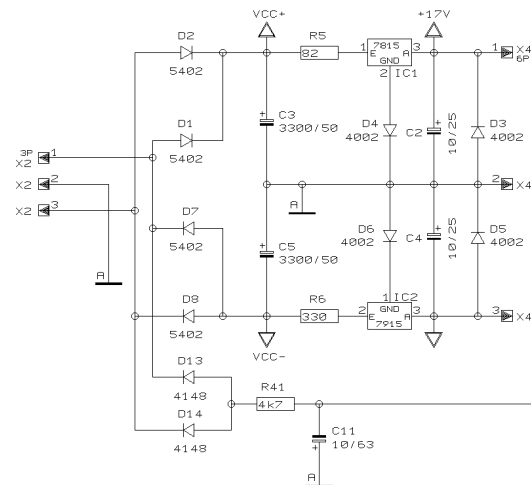
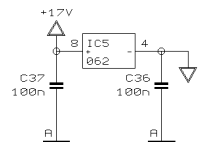
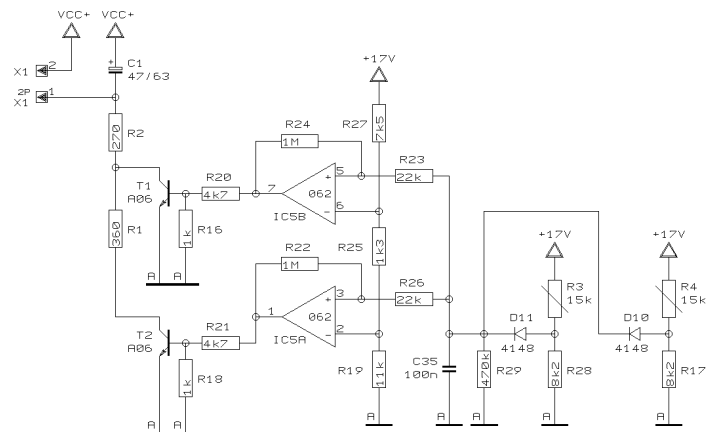
SHEET 1 OF 3 SHEETS TOTAL



|           |     |          |
|-----------|-----|----------|
| REVISIONS |     |          |
| C         |     |          |
| DRAWN     | BHK | CHECKED  |
| DATE      |     | 19.02. 1 |
|           |     | 10:34    |

BEHRINGER®  
Specialized Studio Equipment

PROJECT  
BX1200  
ULTRABASS  
FOOTSWITCH  
SHEET 2 OF 3 SHEETS TOTAL



|           |     |          |
|-----------|-----|----------|
| REVISIONS |     | C        |
| DRAWN     | BHK | CHECKED  |
| DATE      |     | 19.02. 1 |
|           |     | 10:34    |



PROJECT  
BX1200  
ULTRABASS  
BX120

SHEET 3 OF 3 SHEETS TOTAL