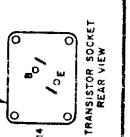
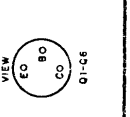
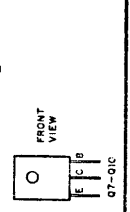


MARANTZ
 MODEL 1B
 STEREO AMPLIFIER
 PART 11-1004

LAST
 R33
 C33
 R42
 L4



SWITCH POSITIONS

POS NO	S1 SELECTOR SWITCH	S5 SPEAKER SWITCH
1 <td>PHONO</td> <td>OFF</td>	PHONO	OFF
2 <td>FM</td> <td>JAIN</td>	FM	JAIN
3 <td>TAPE</td> <td>BOTH</td>	TAPE	BOTH
4 <td>AUX 1</td> <td>REMOTE</td>	AUX 1	REMOTE
5 <td>AUX 2</td> <td></td>	AUX 2	

SYMBOL	PART NO
CR1,CR2	35-1003
CR3,CR4	35-1004
CR5	35-1015
CR6,CR8	35-1009
CR7,CR9	35-1008
CR10,CR11	35-1012
CR12	35-1013
CR18	35-1010
CR19	35-1000
CR16	35-1014
CR15	35-1005
CR13,CR14	35-1002
CR17,CR22	35-1006
CR20,CR21	35-1007

SYMBOL	PART NO
Q1,Q2	34-1014
Q3,Q5	34-1013
Q7,Q10	34-1003
Q8,Q9	34-1002
Q11,Q14	34-1000
Q12,Q13	34-1001
L7,L8	55-1007
K1,K2	56-1000
S1	46-1000
S2,S3	48-1000
S4	48-1004
S5	46-1001
T1	52-1000

NOTES:
 ALL SWITCHES VIEWED FROM FRONT AND SHOWN IN EXTREME COUNTER-CLOCKWISE POSITION 1 UNLESS OTHERWISE NOTED.
 ALL CAPACITORS ARE IN OHMS 1/4W 5%
 * UNLESS OTHERWISE NOTED: DIMENSIONS AND TOLERANCES ARE AS SHOWN FOR OPTIMUM CIRCUIT OPERATION.

99-1046