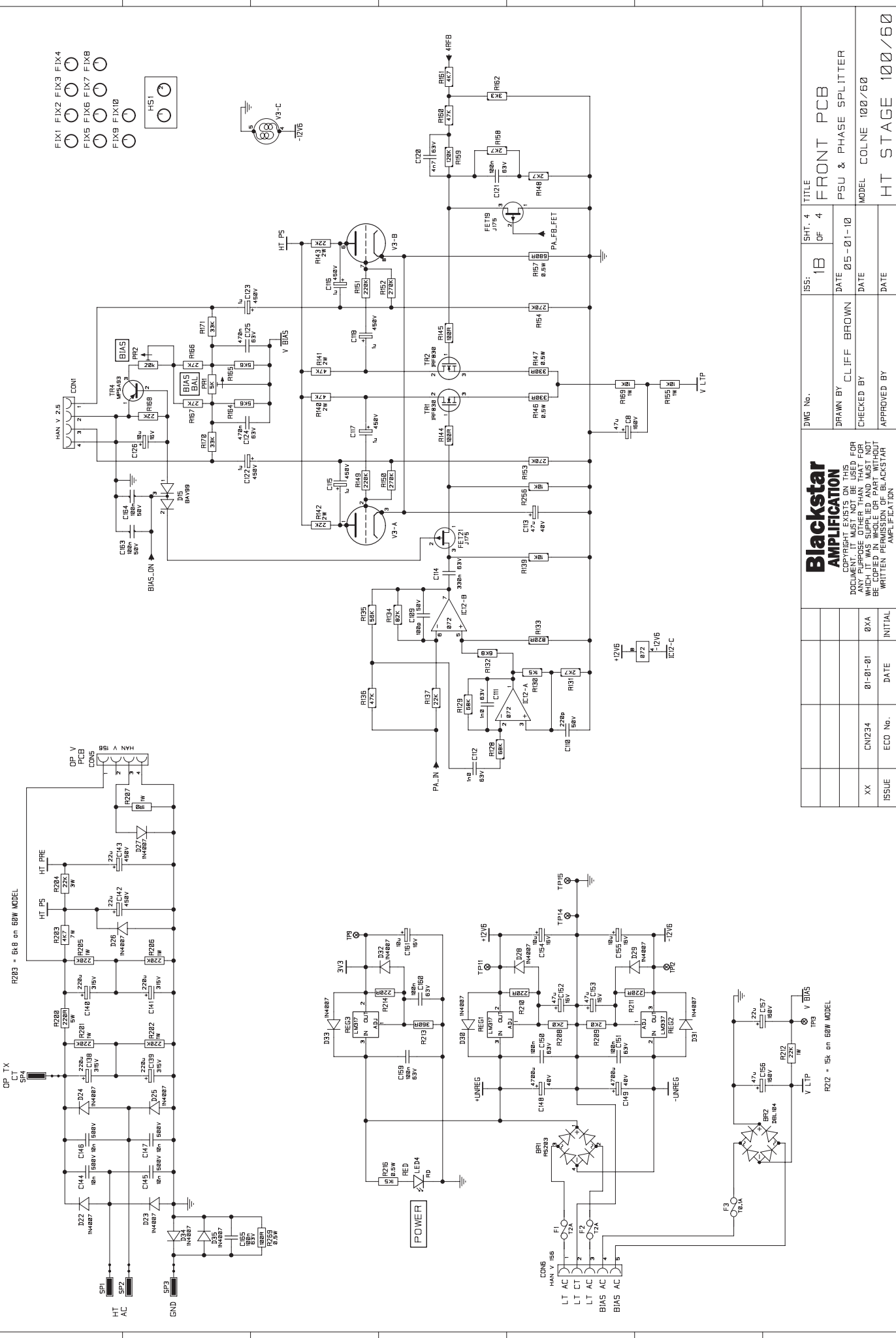
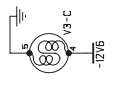


- FIX1 FIX2 FIX3 FIX4
- FIX5 FIX6 FIX7 FIX8
- FIX9 FIX10



**Blackstar**  
AMPLIFICATION

COPYRIGHT EXISTS ON THIS DOCUMENT. IT MUST NOT BE USED FOR REPRODUCTION OR TRANSMISSION WHICH IT WAS SUPPLIED AND MUST NOT BE COPIED IN WHOLE OR PART WITHOUT WRITTEN PERMISSION OF BLACKSTAR AMPLIFICATION.

DWG No.	ISS:	SHT. 4	TITLE
	1B	OF 4	FRONT PCB
DRAWN BY	CLIFF BROWN	DATE	PSU & PHASE SPLITTER
CHECKED BY		DATE	MODEL COLNE 100/60
APPROVED BY		DATE	HT STAGE 100/60

R203 - 6A8 on 60W MODEL

R212 - 5K on 60W MODEL