

PEAVEY
Peavey Electronics Corp.
P. O. Box 2898
Meriden, MD 21301

Title: CLASSIC 50 (II)
Sheet Title: MAIN
Engineers: PJS / JCP
D Sheet 2 of 2 Date: 2-12-2014_15:06

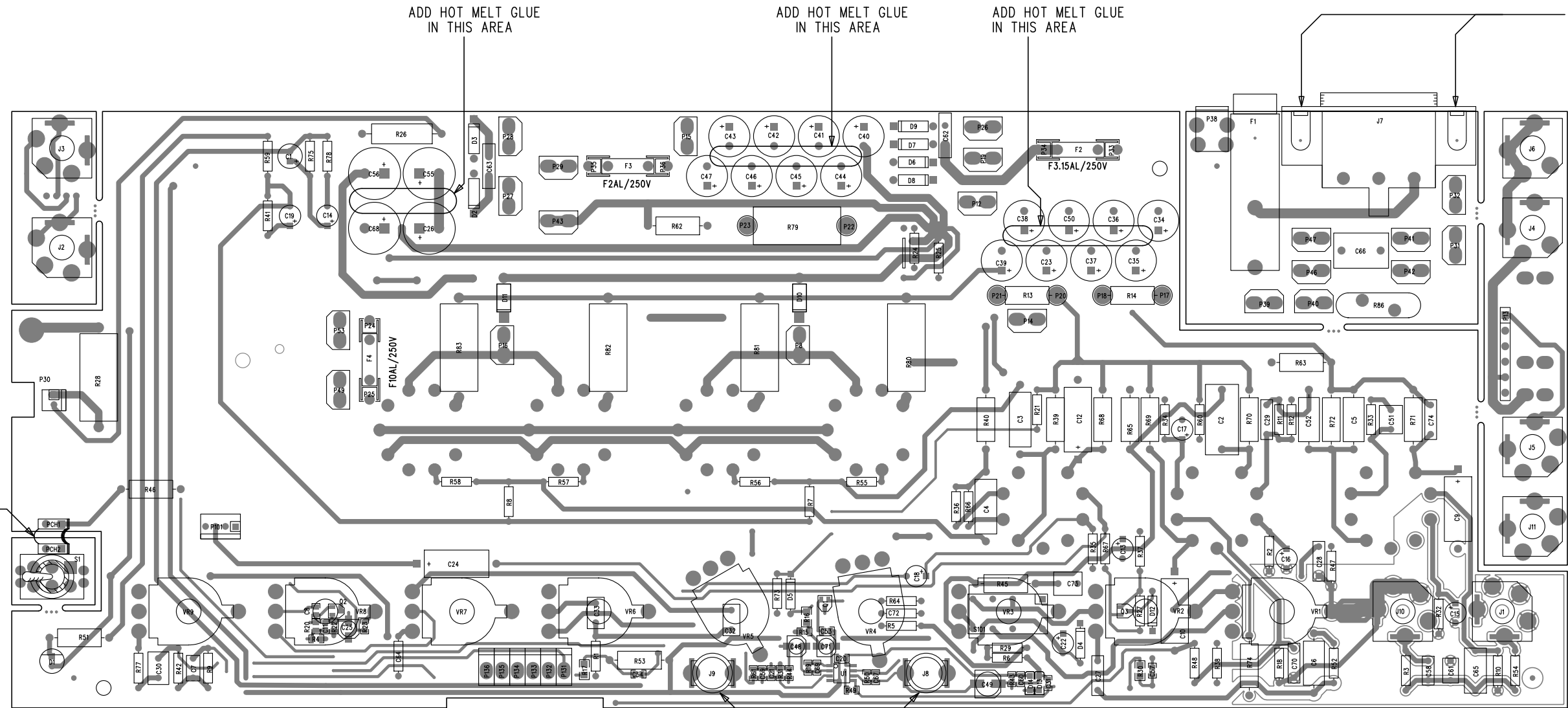
PRIMARY SIDE VIEW

ADD HOT MELT GLUE
IN THIS AREA

ADD HOT MELT GLUE
IN THIS AREA

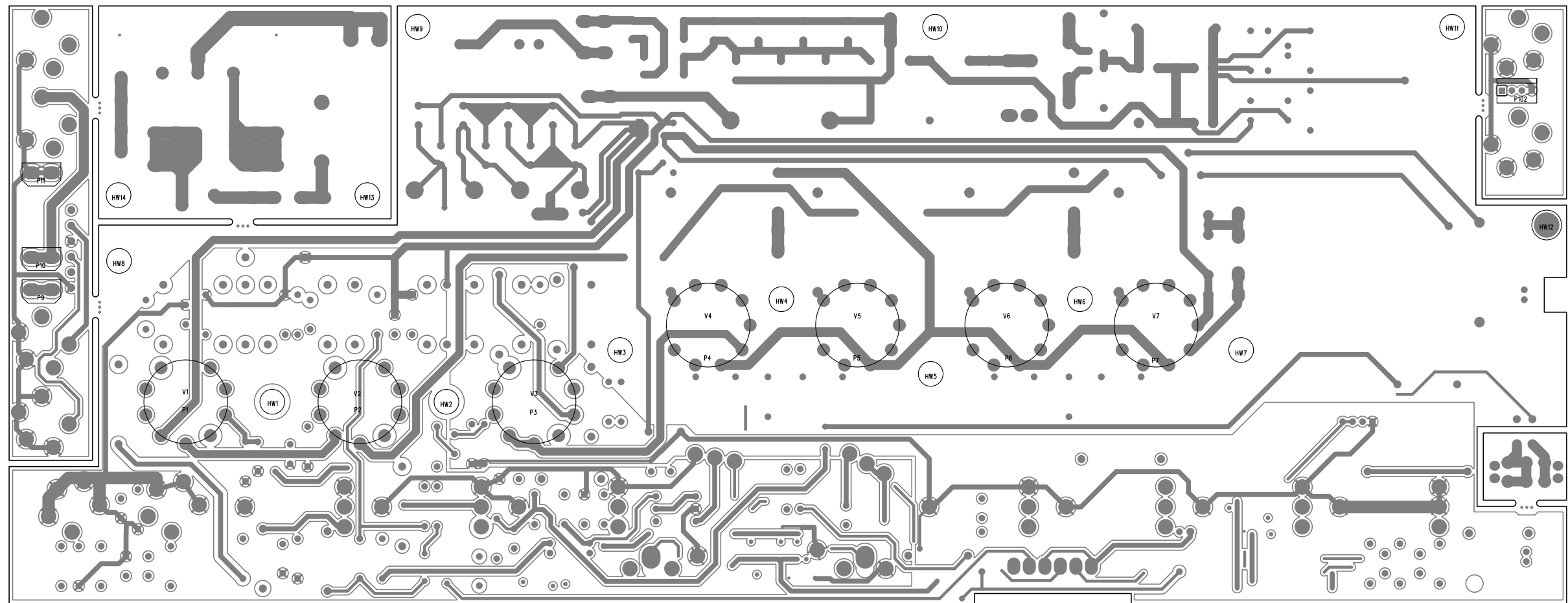
ADD HOT MELT GLUE
IN THIS AREA

SECURE J7 TO PCB USING
(2) 31500954 SCREWS



USE ONE 30600036 CABLE
TO CONNECT PCH1 TO PCH2

BEND CENTER LEAD SO THAT IT
TOUCHES PAD ON THE SECONDARY SIDE
BEFORE SOLDERING



BILL OF MATERIAL REPORT

REPORT DATE/TIME: 2/13/2014 1:43:14 PM

BOARD NAME: CLASSIC 50 II ASSEMBLY LEVEL NUMBER: 29101750D

PROJECT NUMBER: P1000013, P1100030 DESIGNER: JTH-32101837D

Qty.	Part #	Description	Reference Designators
1	30200037	2.2M 1/4W 5% MF 1206	R16
2	30200060	100 1/4W 1% MF 1206	R17 R30
1	30200174	10K 1/10W 1% MF 0805	R50
1	30200188	1.00K 1/10W 1% MF 0805	R61
1	30200194	100K 1/10W 1% MF 0805	R31
1	30200195	1.00M 1/10W 1% MF 0805	R49
1	30200205	47.5K 1/10W 1% MF 0805	R19
2	30200256	22.1K 1/10W 1% MF 0805	R22 R23
1	30200267	2.21K 1/10W 1% MF 0805	R44
1	30200413	2.67K 1/10W 1% MF 0805	R15
2	30200417	464K 1/10W 1% MF 0805	R4 R20
1	30200495	22.1 1/10W 1% MF 0805	R43
2	30210000	1K 1W 5% MO AXL	R45 R65
1	30210002	680 1W 5% MO AXL	R46
1	30210005	22K 1W 5% MO AXL	R13
2	30210008	220K 1W 5% MO AXL	R62 R63
1	30210017	100K 1W 5% MO AXL	R68
1	30210018	10K 1W 5% MO AXL	R14
1	30210024	1.2K 1W 5% MO AXL	R51
2	30210028	1.8K 1W 5% MO AXL	R53 R74
4	30210123	150K 1W 5% MO AXL	R69 R70 R71 R72
1	30240001	150 1/4W 5% CF AXL	R77
1	30240014	330 1/4W 5% CF AXL	R37

6	30240018	1500	1/4W	5%	CF	AXL	R2 R32 R33 R34 R35 R36
1	30240028	18K	1/4W	5%	CF	AXL	R59
1	30240030	33K	1/4W	5%	CF	AXL	R41
5	30240031	47K	1/4W	5%	CF	AXL	R54 R55 R56 R57 R58
2	30240032	68K	1/4W	5%	CF	AXL	R1 R27
1	30240034	100K	1/4W	5%	CF	AXL	R42
1	30240035	150K	1/4W	5%	CF	AXL	R29
6	30240036	220K	1/4W	5%	CF	AXL	R5 R6 R7 R8 R18 R64
1	30240037	330K	1/4W	5%	CF	AXL	R9
2	30240039	1M	1/4W	5%	CF	AXL	R21 R60
2	30240045	51.1K	1/4W	1%	MF	AXL	R38 R73
2	30240090	47	1/4W	5%	FP	AXL	R24 R25
1	30240151	100K	1/4W	1%	MF	AXL	R3
1	30240200	10 OHM	3A			INRUSH LIMITER	R86
2	30241050	10K	1/4W	1%	MF	AXL	R75 R78
3	30241118	1M	1/4W	1%	MF	AXL	R10 R66 R67
3	30241119	464K	1/4W	1%	MF	T&R	R11 R12 R52
2	30241140	2.21M	1/4W	1%	MF	AXL	R47 R48
2	30250018	68K	1W	10%	MO	AXL	R39 R40
1	30250020	390	5W	5%	FP	AXLH	R79
1	30250040	150	5W	10%	WW	AXLH SL	R28
4	30250060	1K	5W	10%	WW	AXLH SL	R80 R81 R82 R83
1	30250083	10	2W	2%	MO	T&R	R26
1	30300081	1UF	50V	20%	EL	SMT4	C25
2	30300084	2.2UF	35V	20%	ELN	SMT4	C48 C71
2	30300088	100PF	50V	5%	NPO	0805	C59 C60
1	30300091	1000PF	50V	5%	NPO	0805	C31
1	30300099	22UF	50V	20%	EL	SMT6	C49

4	30300121	0.1UF	50V	5%	X7R	0805	C8 C11 C20 C21
1	30300154	0.015UF	50V	10%	X7R	0805	C67
2	30300156	0.047UF	50V	10%	X7R	0805	C54 C57
1	30300171	0.047UF	50V	5%	X7R	0805	C53
1	30300234	1800PF	50V	5%	NP0	0805	C69
1	30320096	0.1UF	250V	10%	PE	RADH	C65
2	30320099	0.01UF	1000V	80-20%	Z5U		C62 C63
3	30320105	0.047UF	400V	10%	PES	AXL	C9 C10 C12
1	30320129	0.22UF	250V	10%	PE	RADH	C2
1	30320180	2.2UF	50V	20%	EL	RAD	C13
7	30320181	22UF	50V	20%	EL	RAD	C14 C15 C16 C17 C18 C19 C22
4	30320186	1000UF	35V	20%	EL	RAD	C26 C55 C56 C68
3	30320281	1000PF	630V	10%	PE	AXL	C5 C6 C52
2	30320283	0.022UF	400V	10%	PE	AXL	C3 C4
1	30320334	0.1UF	250V	10%	PE	AXL	C24
1	30320441	39PF	1000V	20%	Z5F	RADH	C61
1	30320556	0.1UF	275V	10%	"X"	RADH	C66
3	30320569	470PF	400V	20%	PP	RADH	C27 C28 C29
1	30320571	220PF	400V	20%	PP	RADH	C74
1	30320572	100PF	400V	20%	PP	RADH	C70
1	30320625	100UF	25V	20%	EL	RAD	C1
16	30320676	10UF	450V	20%	EL	RADIAL	C23 C34 C35 C36 C37 C38 C39 C40 C41 C42 C43 C44 C45 C46 C47 C50
1	30330114	0.22UF	100V	5%	PES	RAD	C73
1	30330116	4700PF	50V	5%	PE	RAD	C7
1	30330128	0.22UF	50V	5%	PE	RAD	C30
2	30330134	0.022UF	50V	5%	PE	RAD	C32 C33

1	30330155	0.01UF 50V 5% PE RAD	C58
1	30330159	0.47UF 63V 5% PES RAD	C51
1	30340057	270PF 50V 10% NPO AXL	C64
1	30340058	470PF 50V 10% NPO AXL	C72
1	30402114	2114 DUAL LN OPAMP DMP8	U1
2	30402873	SR2873 2KV, 250MA DIODE	D10 D11
2	30418138	J111 JFET N SOT23	Q1 Q3
2	30418141	1N758 10V ZENER SOD123	D13 D14
1	30418284	MMBT2907 PNP SOT23	Q2
1	30450879	WHT T1 3/4 LED S-BRT BULK	D1
2	30464003	1N4003 200V 1A SI DIODE	D2 D3
4	30464007	1N4007 1KV, 1A, SI DIODE	D6 D7 D8 D9
3	30464148	1N4148 75V 10MA DIODE	D4 D5 D12
2	30600036	2C .156 STRP STRP 3" JMP	PCH1 PCH2
1	30600134	6C .156 STRP SRCON 5"	P13
1	30600136	0 OHM 22GA JMPR AXL	RGND
4	30806623	EL84/6BQ5 POWER TUBE	V4 V5 V6 V7
3	30806629	12AX7 LOW MICROPHONIC	V1 V2 V3
7	30806631	TUBE SKT 9PIN CERAMIC	P1 P2 P3 P4 P5 P6 P7
1	30901429	EXT. FUSEHOLDER, PC MT	F1
1	30901548	PWR INLET, RA SCREW MT PC RA GND	J7
6	30901714	FUSE CLIP, 5 X 20MM -T&A	P24 P25 P33 P34 P35 P36
1	30901785	SCREW TERM, 6-32 -PCB MT	P38
11	30901853	STND .937 T4-40,SW,AL,ST	HW1 HW2 HW3 HW4 HW5 HW6 HW7 HW8 HW9 HW10 HW11
2	30901890	STND .375 T4-40SW,AL,ST	HW13 HW14
1	31190303	1M20A SNGL 16MM SPD	VR8
1	31190307	20KS SNGL 16MM SPD	VR6

2	31190311	1M5A	SNGL 16MM	SPD	VR2 VR5
1	31190334	250KB	SNGL 16MM	SPD	VR7
1	31190336	10KB	SNGL 16MM	SPD	VR4
1	31190337	10K20A	SNGL 16MM	SPD	VR3
1	31190339	250K20A	SNGL 16MM	SPD	VR1
1	31190364	10K20C	SNGL 16MM	SPD	VR9
1	31322277	RELAY 12V DPDT .5A			S101
1	31322476	SWITCH 2P2T TOGGLE			S1
2	31466214	2 TIP HID JACK NINS W/SPD			J4 J6
6	31466216	STEREO HID JACK INSU W/SP			J1 J2 J3 J5 J10 J11
2	31466604	SNAP-FIT VERT RCA JACK, RED			J8 J9
6	33711818	PIN-F .093 FOR COMP MNTG			P17 P18 P20 P21 P22 P23
21	33716194	SPADE .250 PC MNT .093			P8 P12 P14 P15 P16 P19 P26 P27 P28 P29 P31 P32 P39 P40 P41 P42 P43 P46 P47 P49 P53
6	33717003	1 STAKE PIN .045 .625 TIN			P131 P132 P133 P134 P135 P136
2	33717015	4 HDR V SR .100" TIN LK			P101 P102
1	33717346	2 HDR V SR .100" TIN LK			P30
3	33719167	SPADE .250 PC MNT BULK			P9 P10 P11
1	70901296	STND.937 T4-40,SW,NB,ST			HW12

 END OF BILL OF MATERIAL REPORT
