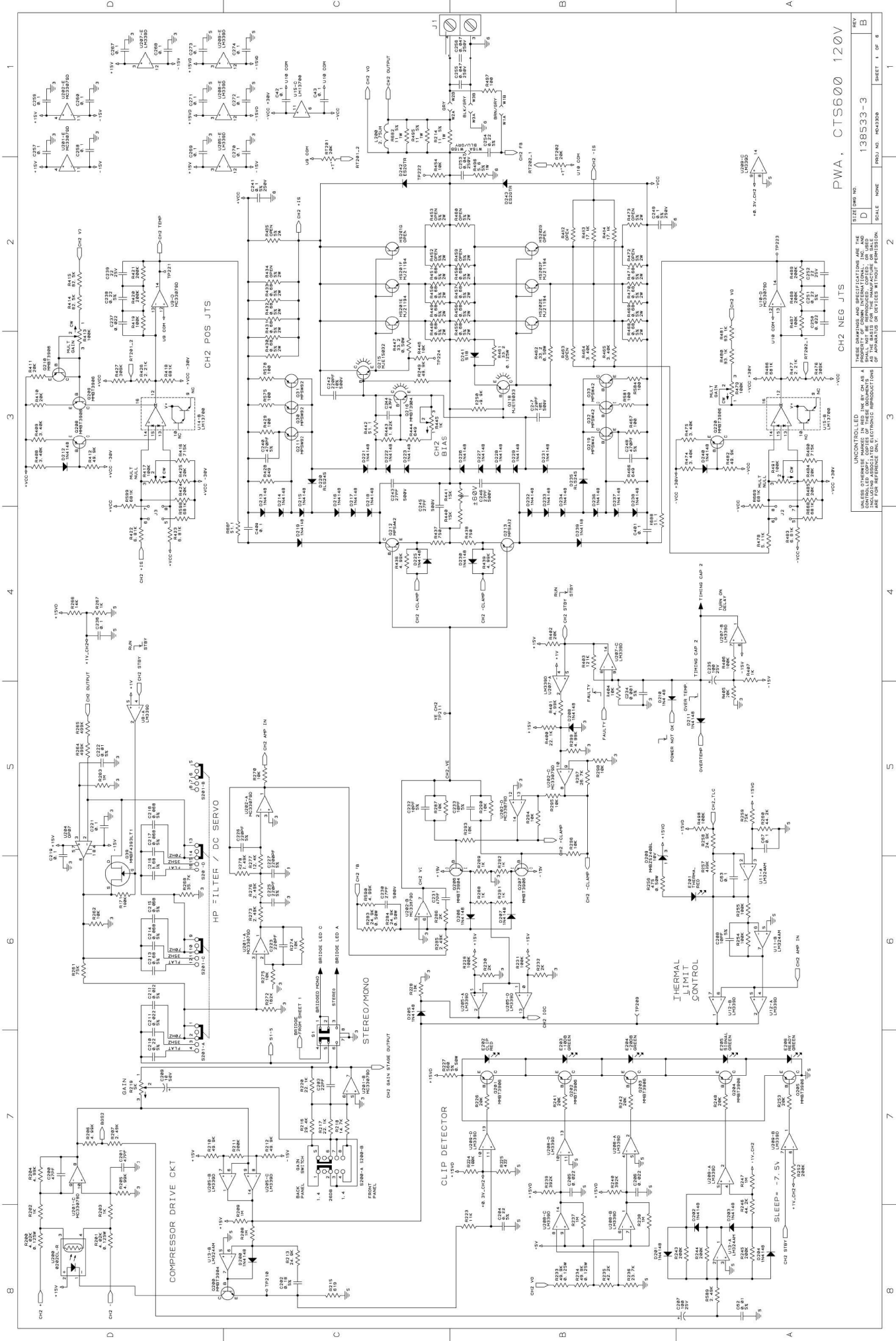


NOTES:
 1. SEE 138533-3-B.XLS FOR PARTS LIST DATA
 2. UNLESS OTHERWISE SPECIFIED, 0.1% TOL.
 3. ALL CAPACITORS ARE IN MICROFARADS
 4. REQUIRE HEATSINKING

UNCONTROLLED
 THESE DRAWINGS AND SPECIFICATIONS ARE THE
 PROPERTY OF THE COMPANY AND SHALL NOT BE
 REPRODUCED OR TRANSMITTED IN ANY FORM OR
 BY ANY MEANS, ELECTRONIC OR MECHANICAL,
 INCLUDING PHOTOCOPIING, RECORDING, OR BY
 ANY INFORMATION STORAGE AND RETRIEVAL
 SYSTEMS, WITHOUT PERMISSION FROM THE
 COMPANY.



PWA, CTS600 120V

REV	138533-3
SCALE	NONE
PROJ. NO.	MA430R
SHEET 1 OF 6	

UNCONTROLLED
 THESE DRAWINGS AND SPECIFICATIONS ARE THE
 PROPERTY OF THE COMPANY. NO PARTS OR MATERIALS
 SHALL BE REPRODUCED OR COPIED, EITHER
 WHOLLY OR IN PART, WITHOUT THE WRITTEN
 PERMISSION OF THE COMPANY.

CH2 NEG JTS

CH2 POS JTS

HP FILTER / DC SERVO

COMPRESSOR DRIVE CKT

CLIP DETECTOR

THERMAL LIMIT CONTROL

CH2 BIAS

CH2 CLAMP

- HOT/NEUTRAL
- PRIMARY ±190V
- PRIMARY ±190V
- PRIMARY ±190V
- PRIMARY 0V
- GROUND
- ±120V-CH1
- ±120V-CH2
- ±120V
- ±26V

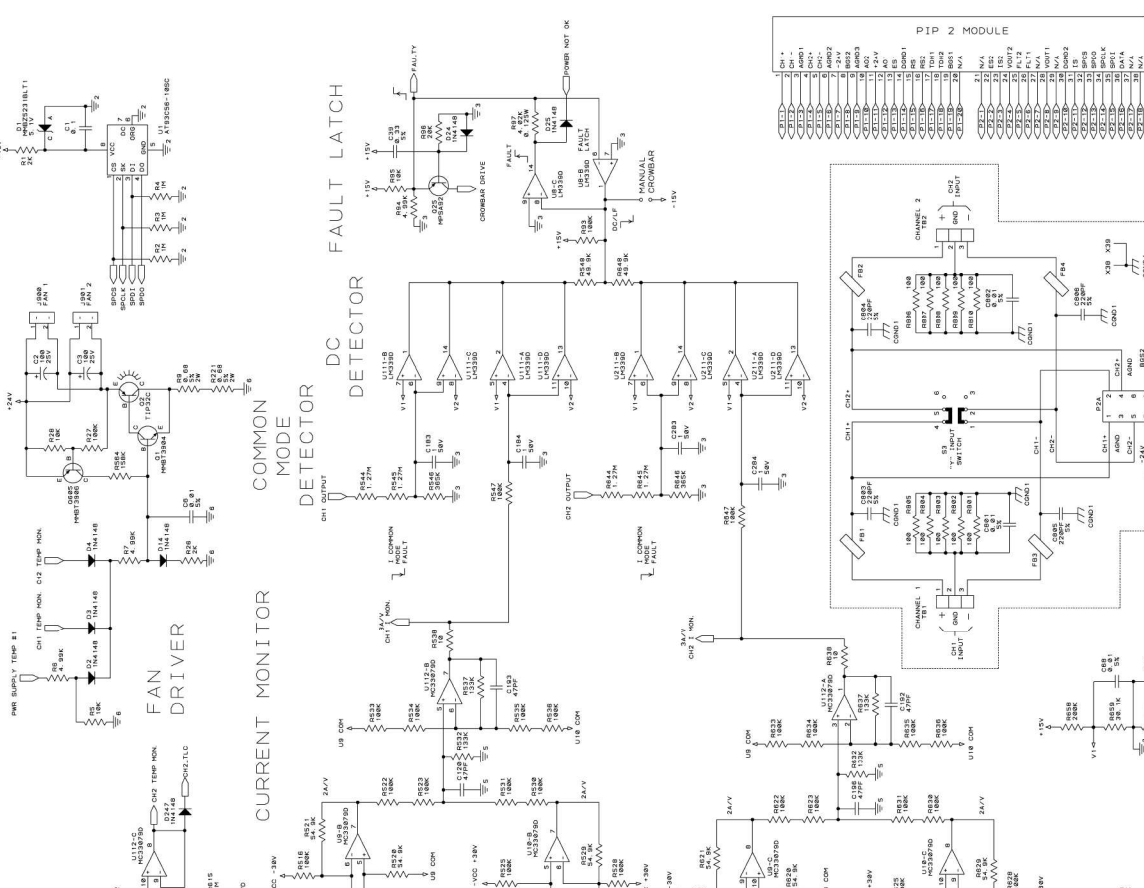
VOLTAGE SPACINGS FOR PWB 138530-3
NUMBERS ARE IN THOUSANDTHS

	HOT/NEUTRAL	PRIMARY ±190V	PRIMARY ±190V	PRIMARY ±190V	PRIMARY 0V	GROUND	±120V-CH1	±120V-CH2	±120V	±26V
HOT/NEUTRAL	5.0	5.0	5.0	5.0	5.0	5.0	5.0	5.0	5.0	5.0
PRIMARY ±190V	5.0	5.0	5.0	5.0	5.0	5.0	5.0	5.0	5.0	5.0
PRIMARY ±190V	5.0	5.0	5.0	5.0	5.0	5.0	5.0	5.0	5.0	5.0
PRIMARY ±190V	5.0	5.0	5.0	5.0	5.0	5.0	5.0	5.0	5.0	5.0
PRIMARY 0V	5.0	5.0	5.0	5.0	5.0	5.0	5.0	5.0	5.0	5.0
GROUND	5.0	5.0	5.0	5.0	5.0	5.0	5.0	5.0	5.0	5.0
±120V-CH1	2.25	2.25	2.25	2.25	2.25	2.25	2.0	1.9	3.5	3.5
±120V-CH2	2.25	2.25	2.25	2.25	2.25	2.25	2.0	3.5	3.5	3.5
±120V	2.25	2.25	2.25	2.25	2.25	2.25	2.0	3.5	3.5	3.5
±26V	2.25	2.25	2.25	2.25	2.25	2.25	2.0	3.5	3.5	2.0

TABLE 3

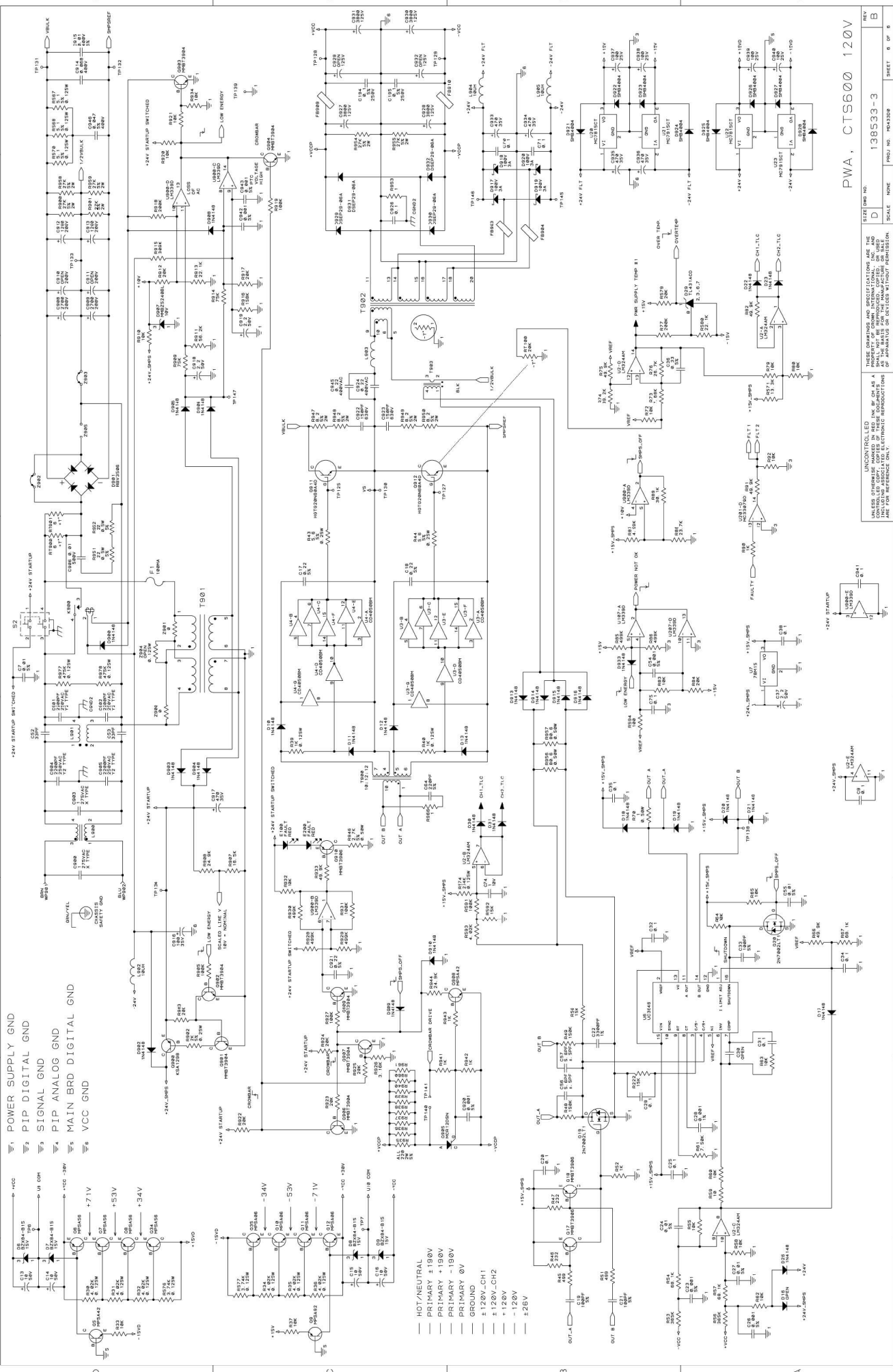
MODEL DIFFERENCE			
CTS600 100V	138520	230V	138530
CTS600 120V	138530	100V	138536
CTS1200 120V	138533	128V	138537
CTS1200 230V	138534	100V	138537

R9991 P/N = A11388-10811	P/N = A11388-10821	P/N = A11388-10831	P/N = A11388-20811	P/N = A11388-20821	P/N = A11388-20831
--------------------------	--------------------	--------------------	--------------------	--------------------	--------------------



PWA, CTS600 120V
SIZE (DWG NO.)
SCALE NONE
PROJ. NO. PA3309
SHEET 1 OF 6
REV B

UNCONTROLLED DRAWING
USE THESE DIMENSIONS AND SPECIFICATIONS AS THE BASIS FOR CONSTRUCTION OF THIS DRAWING. THE USER SHALL BE RESPONSIBLE FOR OBTAINING THE LATEST CONTROLLED COPY OF THESE DOCUMENTS FROM THE MANUFACTURING DEPARTMENT OF ADAPTAVIC OR DEVICES WITHOUT PERMISSION.
REVISIONS:
REV. NO. 1 138533-3
REV. NO. 2 138533-3
REV. NO. 3 138533-3
REV. NO. 4 138533-3
REV. NO. 5 138533-3
REV. NO. 6 138533-3
REV. NO. 7 138533-3
REV. NO. 8 138533-3
REV. NO. 9 138533-3
REV. NO. 10 138533-3
REV. NO. 11 138533-3
REV. NO. 12 138533-3
REV. NO. 13 138533-3
REV. NO. 14 138533-3
REV. NO. 15 138533-3
REV. NO. 16 138533-3
REV. NO. 17 138533-3
REV. NO. 18 138533-3
REV. NO. 19 138533-3
REV. NO. 20 138533-3
REV. NO. 21 138533-3
REV. NO. 22 138533-3
REV. NO. 23 138533-3
REV. NO. 24 138533-3
REV. NO. 25 138533-3
REV. NO. 26 138533-3
REV. NO. 27 138533-3
REV. NO. 28 138533-3
REV. NO. 29 138533-3
REV. NO. 30 138533-3
REV. NO. 31 138533-3
REV. NO. 32 138533-3
REV. NO. 33 138533-3
REV. NO. 34 138533-3
REV. NO. 35 138533-3
REV. NO. 36 138533-3
REV. NO. 37 138533-3
REV. NO. 38 138533-3
REV. NO. 39 138533-3
REV. NO. 40 138533-3
REV. NO. 41 138533-3
REV. NO. 42 138533-3
REV. NO. 43 138533-3
REV. NO. 44 138533-3
REV. NO. 45 138533-3
REV. NO. 46 138533-3
REV. NO. 47 138533-3
REV. NO. 48 138533-3
REV. NO. 49 138533-3
REV. NO. 50 138533-3
REV. NO. 51 138533-3
REV. NO. 52 138533-3
REV. NO. 53 138533-3
REV. NO. 54 138533-3
REV. NO. 55 138533-3
REV. NO. 56 138533-3
REV. NO. 57 138533-3
REV. NO. 58 138533-3
REV. NO. 59 138533-3
REV. NO. 60 138533-3
REV. NO. 61 138533-3
REV. NO. 62 138533-3
REV. NO. 63 138533-3
REV. NO. 64 138533-3
REV. NO. 65 138533-3
REV. NO. 66 138533-3
REV. NO. 67 138533-3
REV. NO. 68 138533-3
REV. NO. 69 138533-3
REV. NO. 70 138533-3
REV. NO. 71 138533-3
REV. NO. 72 138533-3
REV. NO. 73 138533-3
REV. NO. 74 138533-3
REV. NO. 75 138533-3
REV. NO. 76 138533-3
REV. NO. 77 138533-3
REV. NO. 78 138533-3
REV. NO. 79 138533-3
REV. NO. 80 138533-3
REV. NO. 81 138533-3
REV. NO. 82 138533-3
REV. NO. 83 138533-3
REV. NO. 84 138533-3
REV. NO. 85 138533-3
REV. NO. 86 138533-3
REV. NO. 87 138533-3
REV. NO. 88 138533-3
REV. NO. 89 138533-3
REV. NO. 90 138533-3
REV. NO. 91 138533-3
REV. NO. 92 138533-3
REV. NO. 93 138533-3
REV. NO. 94 138533-3
REV. NO. 95 138533-3
REV. NO. 96 138533-3
REV. NO. 97 138533-3
REV. NO. 98 138533-3
REV. NO. 99 138533-3
REV. NO. 100 138533-3



PWA, CTS600 120V