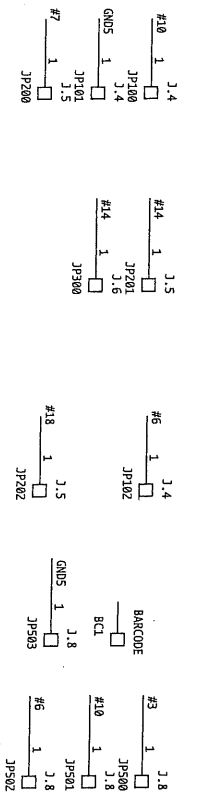
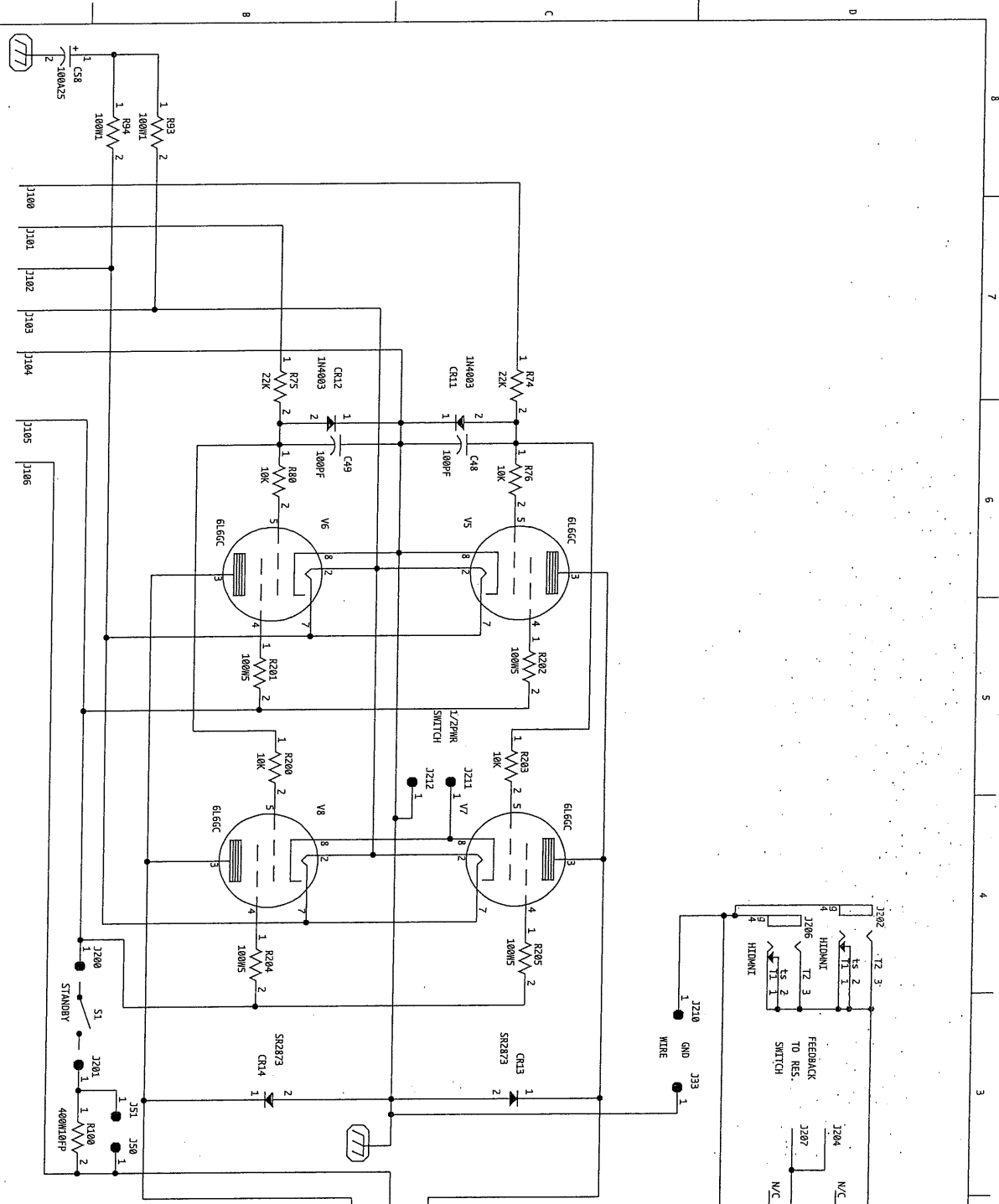


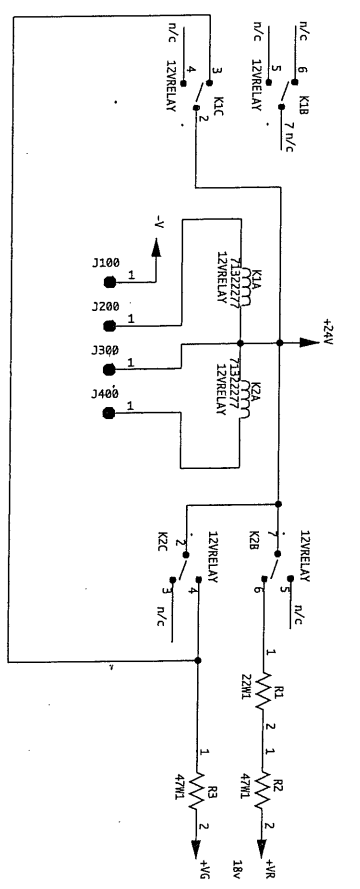
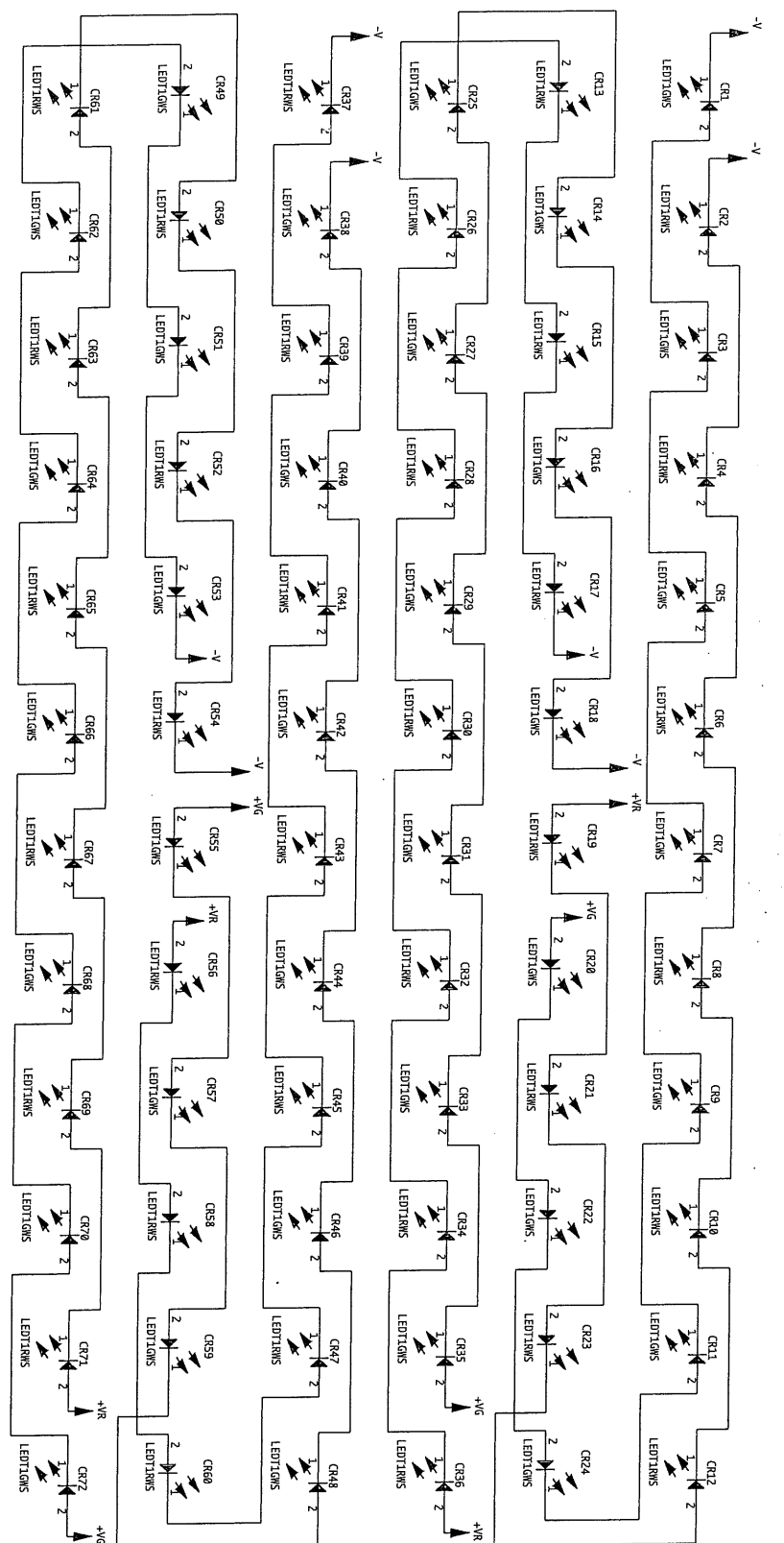
NOTICE: THIS CIRCUITRY IS PROTECTED BY U.S. PATENT NOS. 4,890,351 AND 5,197,102 OWNED BY PEAVEY ELECTRONICS CORP. USE OR COPYING WITHOUT EXPRESS WRITTEN AUTHORITY FROM PEAVEY IS STRICTLY FORBIDDEN AND VIOLATIONS WILL BE PROSECUTED TO THE FULLEST EXTENT ALLOWED UNDER U.S. PATENT LAWS.



PEAVEY ELECTRONICS CORP.		711 A STREET		39301	
MERIDIAN, MISSISSIPPI		39301			
TITLE ULTRA PLUS 120W POWER BOARD					
SIZE	CODE	NUMBER	99052420	REV	
B		#81808059			
PRINT					
DATE	12-DEC-95	SHEET	1 OF 1		

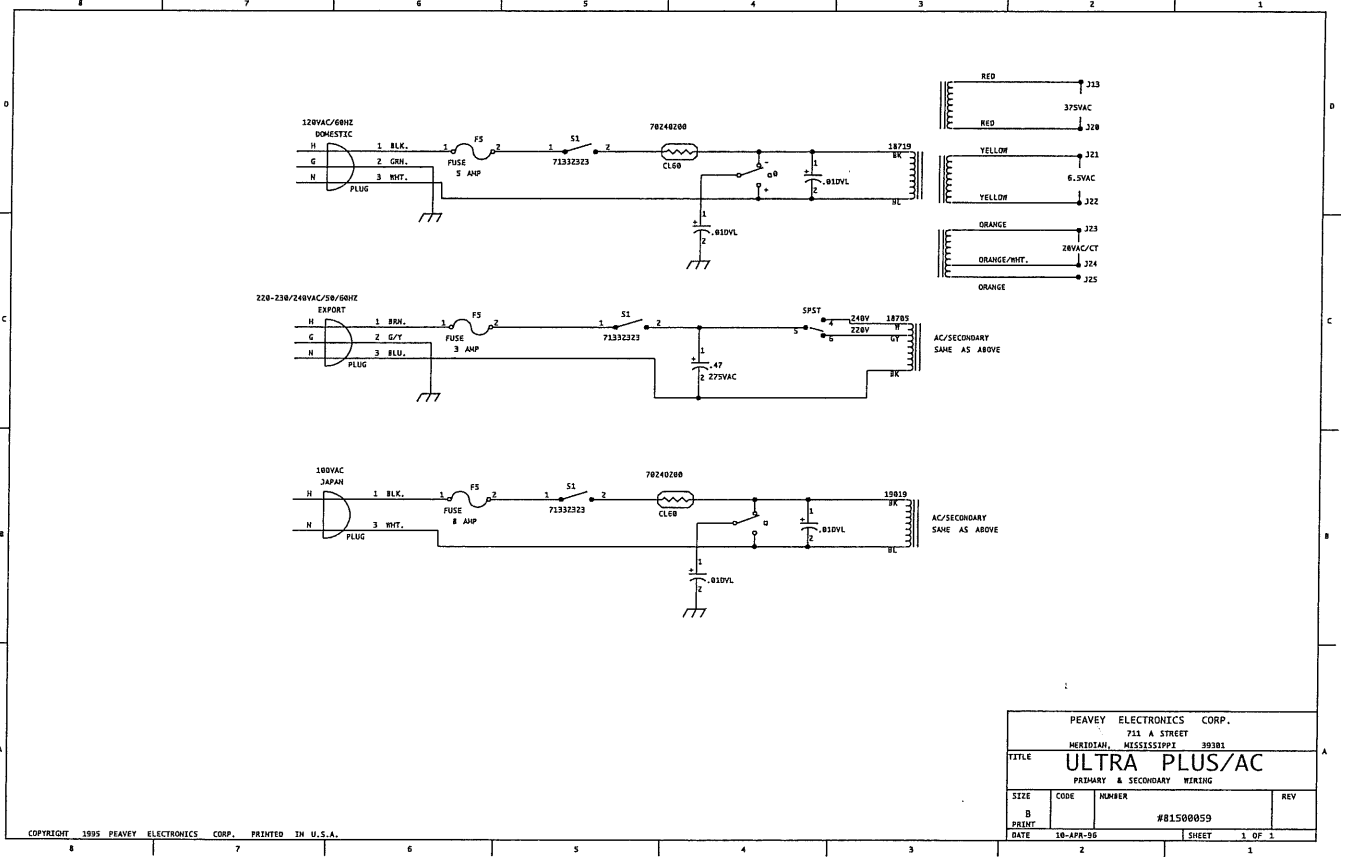
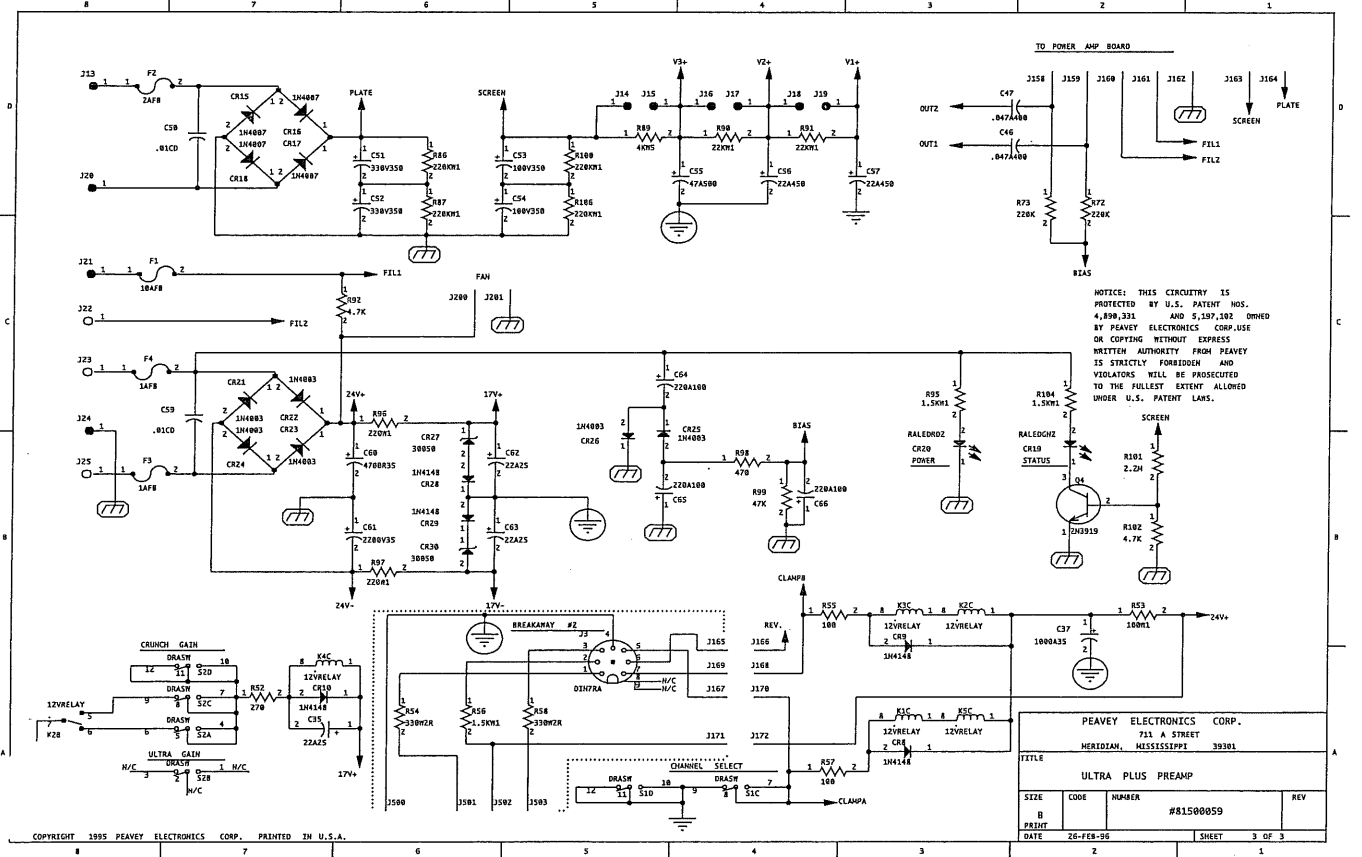
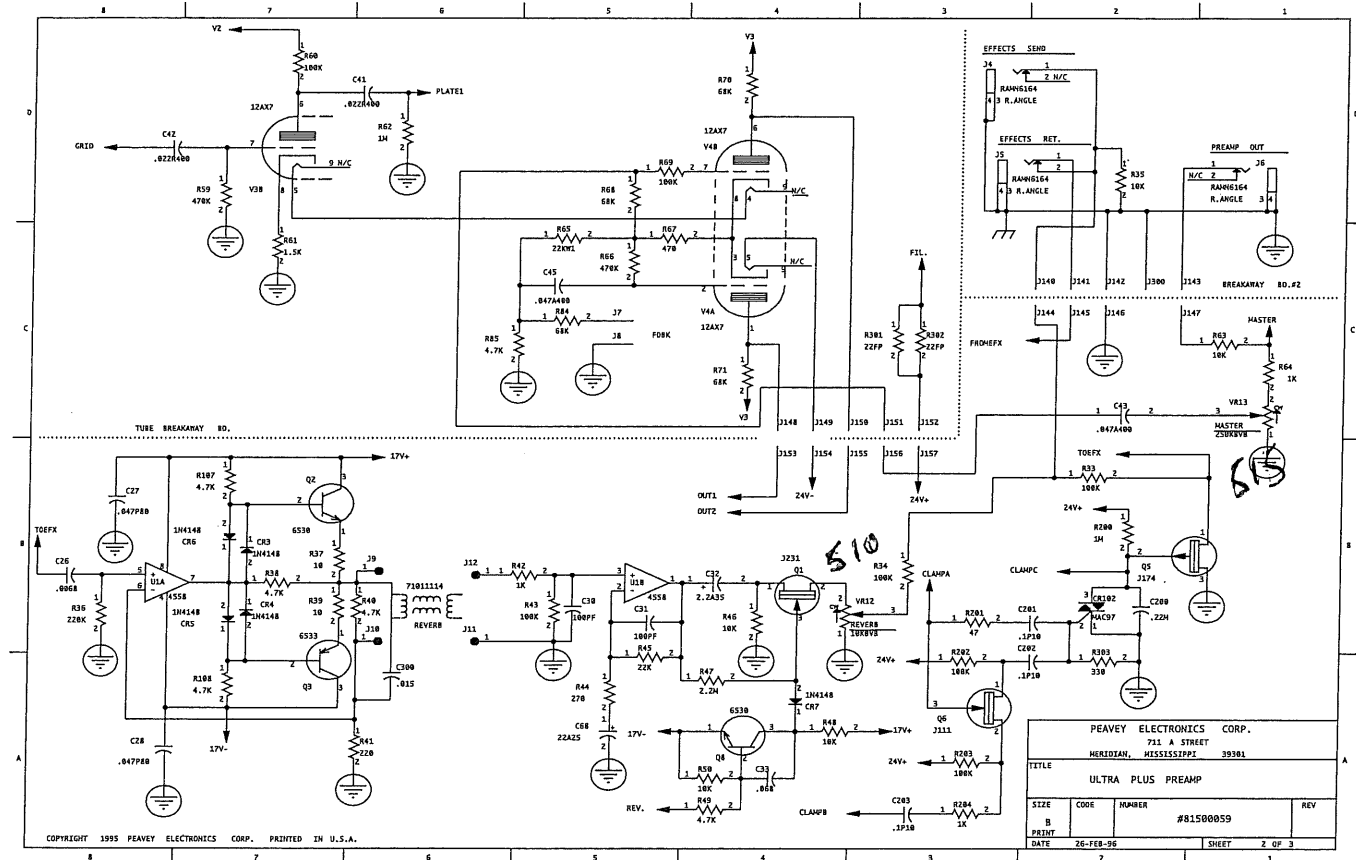
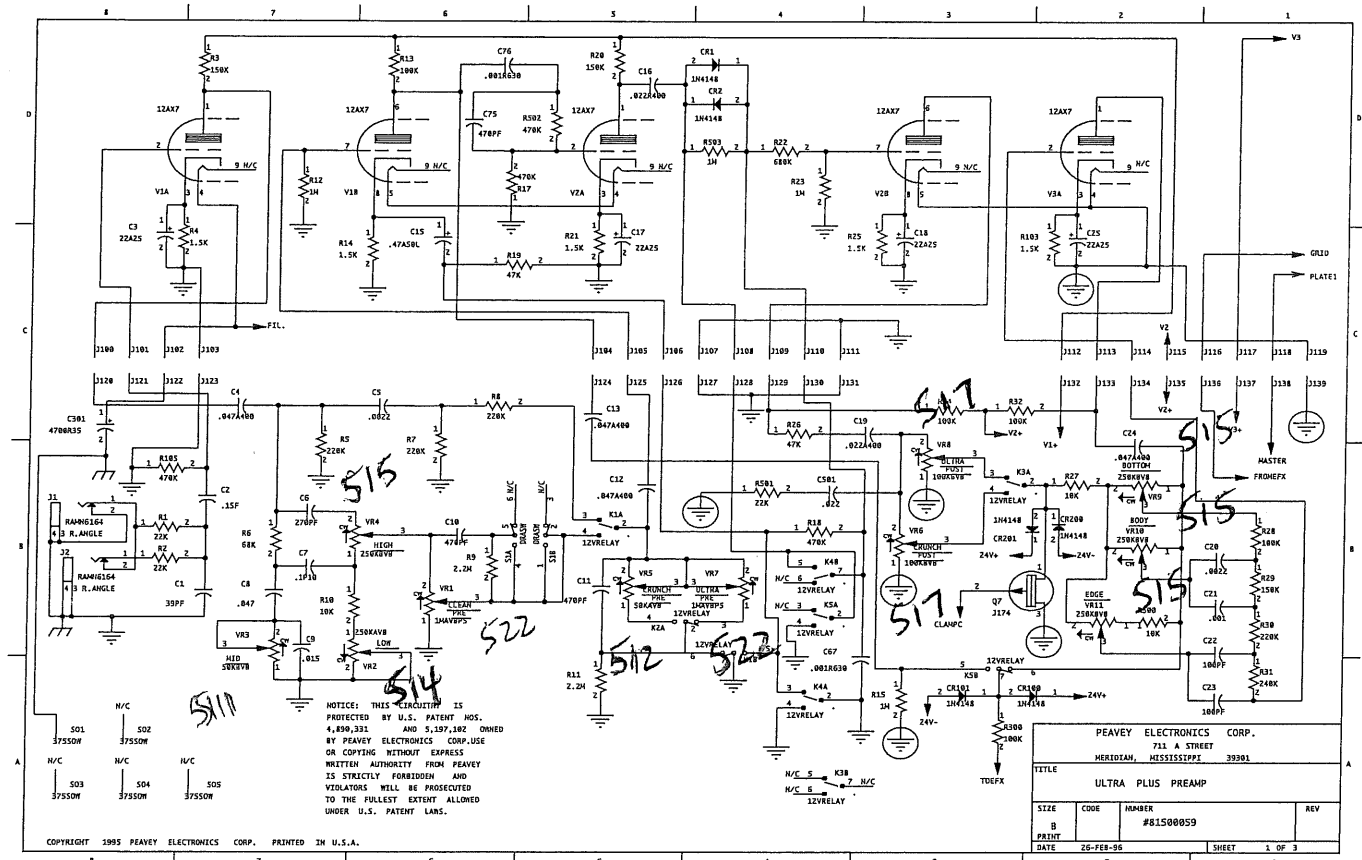


LAST REF. NUM USED: FN UN R3 CR22 MIN SN RELAY 2

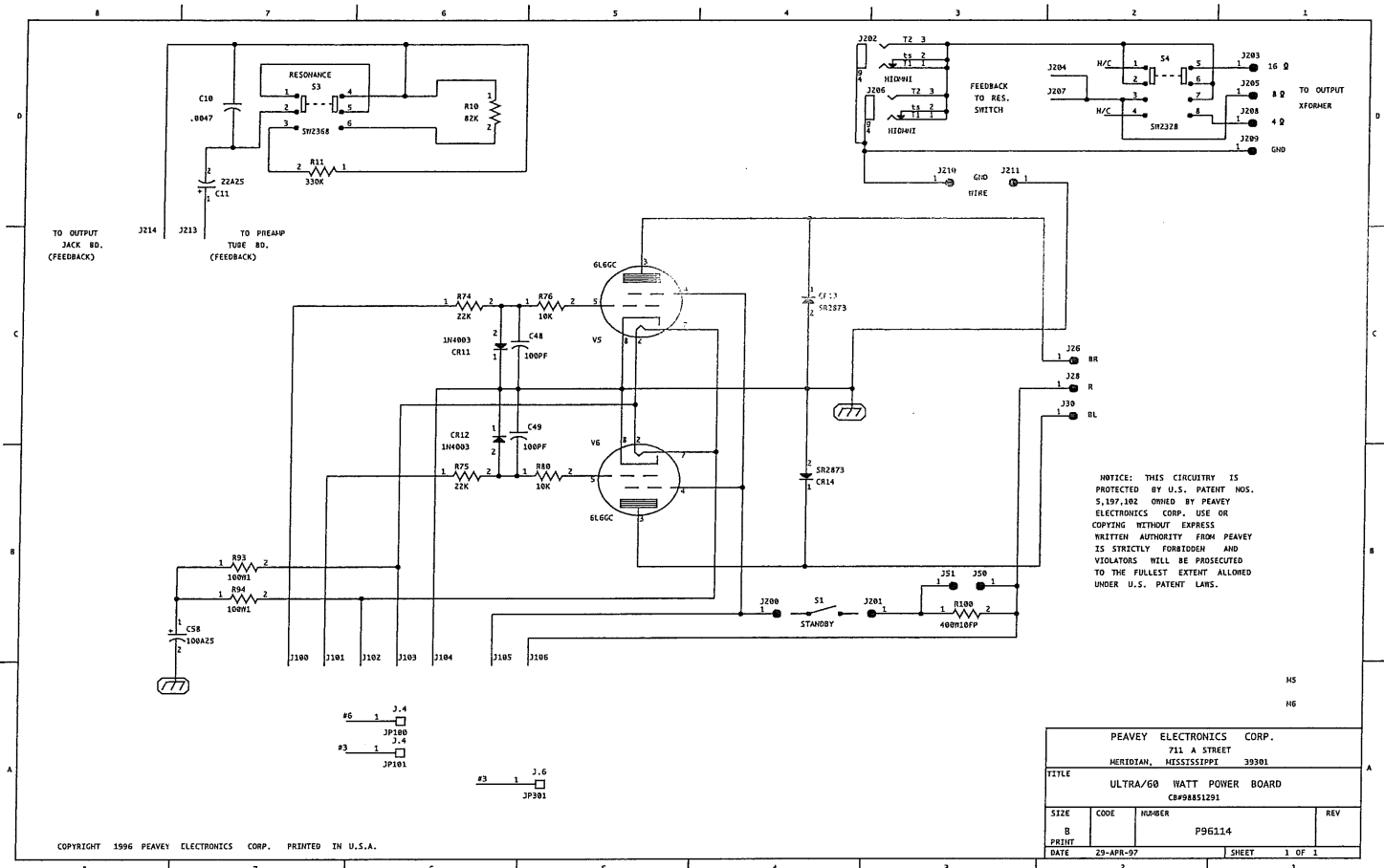


NOTICE: THIS CIRCUITRY IS PROTECTED BY U.S. PATENT NOS. 4,896,331 AND 5,197,182 OWNED BY PEAVEY ELECTRONICS CORP USE OR COPYING WITHOUT EXPRESS WRITTEN AUTHORITY FROM PEAVEY IS STRICTLY FORBIDDEN AND VIOLATIONS WILL BE PROSECUTED TO THE FULLEST EXTENT ALLOWED UNDER U.S. PATENT LAWS.

PEAVEY ELECTRONICS CORP.		711 A STREET		MERIDIAN, MISSISSIPPI 39301	
TITLE <b>ULTRA PLUS LED</b>					
SIZE	CODE	NUMBER	REV		
B		#81500059			
PRINT	DATE	10-APR-95	SHEET	1 OF 1	



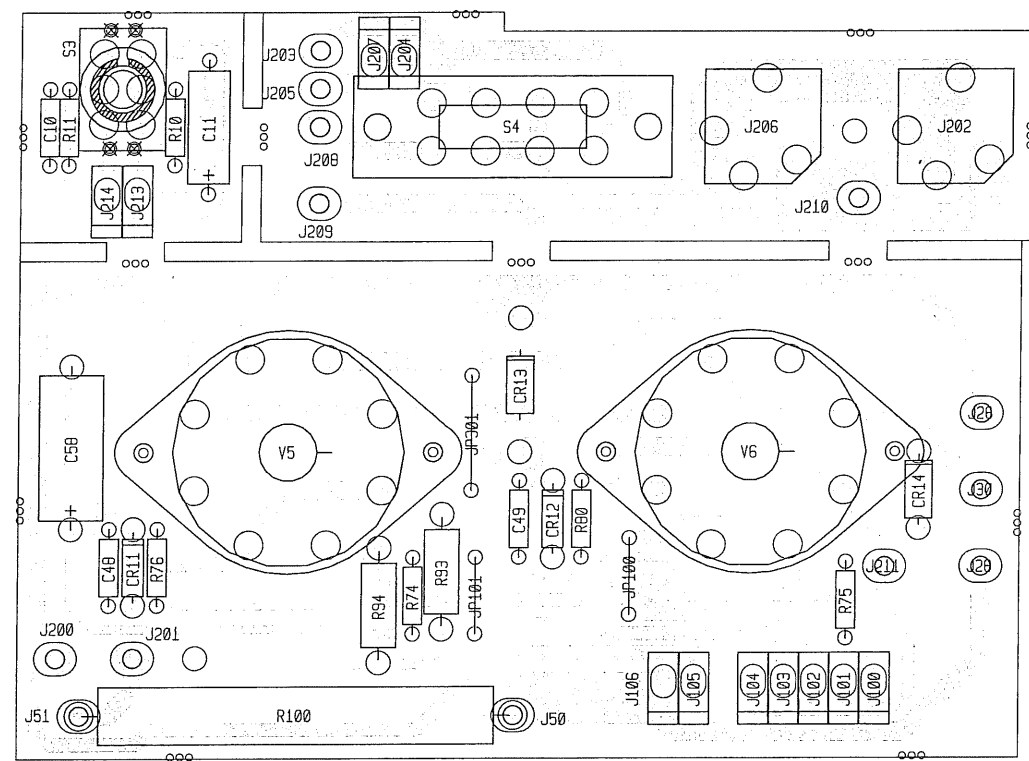
BOARD NAME: ULTRA PLUS PREAMP														
** QTY.	PART NAME	VALUE	PART NUMBER	DESCRIPTION AND DEVICE DESIGNATIONS *****										
1	39PF	39PF	70340052	39PF—50VDC—T/C—T&R C1	10	IN4148	4148	70464148	4700 MFD 35VDC RADIAL SNAP-IN C301	1	1.5K	1.5K	70240018	1.5K-1/4W-5%-CF-T&R R4
1	.1SF	.1SF	70330113	0.10 MFD 10% 100V STCK FILM T&A C2	1	.022	.022	70340012	.022MF-10%-50VDC-MON-T&R C501	1	220K	220K	70240036	220K-1/4W-5%-CF-T&R R5
1	22A25	22A25	70320012	22MFD +/-20% 25VDC EL AXL C3	4	IN4007	1N4007	70464007	IN4148 75V 10MA SILICON DIODE CR1, CR2, CR3, CR4, CR5, CR6, CR7, CR8, CR9, CR10	1	68K	68K	70240032	68K-1/4W-5%-CF-T&R R6
1	.047A400	.047A400	70320105	.047MFD 450 VOLT T&R CAP C4	1	RALEDGN2	RALEDGN2	70450578	SE-8721-D-GN-25MM LDS REC - RIGHT ANGLE CR19	2	220K	220K	70240036	220K-1/4W-5%-CF-T&R R7, R8
1	.0022	.0022	70340004	.0022MF-10%-50VDC-T/C-T&R C5	1	RALEDGR2	RALEDGR2	70450577	SE-8711-D-RD-25MM LDS REC - RIGHT ANGLE CR20	1	2.2M	2.2M	70240040	2.2M-1/4W-5%-CF-T&R R9
1	270PF	270PF	70340057	270PF-10%-50VDC-T/C-T&R C6	6	IN4003	1N4003	70464003	IN4003 200V SILICON DIODE CR21, CR22, CR23, CR24, CR25, CR26	1	10K	10K	70240025	10K-1/4W-5%-CF-T&R R10
1	.1P10	.1P10	70340101	.1MF-10%-50VDC-MON-T&R C7	1	30050	30050	70430050	SZP30050 16V 1 WATT 5% ZENER DIODE T&R CR27	1	2.2M	2.2M	70240040	2.2M-1/4W-5%-CF-T&R R11
1	.047	.047	70340017	.047MF-10%-50VDC-MON-T&R C8	2	IN4148	4148	70464148	IN4148 75V 10MA SILICON DIODE CR28, CR29	1	1M	1M	70240039	1M-1/4W-5%-CF-T&R R12
1	.015	.015	70340010	.015MF-10%-50VDC-T/C-T&R C9	1	30050	30050	70430050	SZP30050 16V 1 WATT 5% ZENER DIODE T&R CR30	1	100K	100K	70240034	100K-1/4W-5%-CF-T&R R13
2	470PF	470PF	70340058	470PF-10%-50VDC-T/C-T&R C10, C11	2	IN4148	4148	70464148	IN4148 75V 10MA SILICON DIODE CR100, CR101	1	1.5K	1.5K	70240018	1.5K-1/4W-5%-CF-T&R R14
2	.047A400	.047A400	70320105	.047MFD 450 VOLT T&R CAP C12, C13	1	MAC97	MAC97	70460097	MAC97-6 400V .6A TO-92 TRIAC T&A CR102	1	1M	1M	70240039	1M-1/4W-5%-CF-T&R R15
1	.47A50L	.47A50L	70340063	.47MFD 50V LOW LEAKAGE C15	2	IN4148	4148	70464148	IN4148 75V 10MA SILICON DIODE CR200, CR201	2	470K	470K	70240038	470K-1/4W-5%-CF-T&R R17, R18
1	.022R400	.022R400	70320106	.022 MFD 400V RADIAL MYLAR C16	1	10AFB	10AFB	70900370	10 AMP F/B FUSE WITH 2 FUSECLIPS #70900816 F1	1	47K	47K	70240031	47K-1/4W-5%-CF-T&R R19
2	22A25	22A25	70320012	22MFD +/-20% 25VDC EL AXL C17, C18	1	2AFB	2AFB	70900133	AGC 2 AMP FUSE F2	1	150K	150K	70240035	150K-1/4W-5%-CF-T&R R20
1	.022A400	.022A400	70320283	.022MF-400V-T&R-CAP C19	2	1AFB	1AFB	70900085	AGC 1 AMP FUSE WITH 2 fuseclips #70900816 F3, F4	1	1.5K	1.5K	70240018	1.5K-1/4W-5%-CF-T&R R21
1	.0022	.0022	70340004	.0022MF-10%-50VDC-T/C-T&R C20	2	RAMN6164	71466164	71466164	JK R/A 12.5MM NIN MONO -88 J1, J2	1	680K	680K	70240065	680K-1/4W-5%-CF-T&R R22
1	.001	.001	70340000	.001MF-10%-50VDC-MON-T&R C21	1	DIN7RA	71466226	71466226	CONN 7P R/A PCMNT DIN W/ 4 MNT. HOLES J3	1	1M	1M	70240039	1M-1/4W-5%-CF-T&R R23
2	100PF	100PF	70340054	100PF-10%-50VDC-T/C-T&R C22, C23	3	RAMN6164	71466164	71466164	JK R/A 12.5MM NIN MONO -88 J4, J5, J6	1	100K	100K	70240034	100K-1/4W-5%-CF-T&R R24
1	.047A400	.047A400	70320105	.047MFD 450 VOLT T&R CAP C24	2	SPX1D	SPX1D	73717003	1 STAKE PIN J7, J8	1	1.5K	1.5K	70240018	1.5K-1/4W-5%-CF-T&R R25
1	22A25	22A25	70320012	22MFD +/-20% 25VDC EL AXL C25	4	MMPD	73711812	73711812	R93-12 PN C.B. MALE MOLEX PIN J9, J10, J11, J12	1	47K	47K	70240031	47K-1/4W-5%-CF-T&R R26
1	.0068	.0068	70340008	.0068MF-10%-50VDC-MON-T&R C26	9	MMPU	73711812	73711812	R93-12 PN C.B. MALE MOLEX PIN J13, J14, J15, J16, J17, J18, J19, J20, J21	1	10K	10K	70240025	10K-1/4W-5%-CF-T&R R27
2	.047P80	.047P80	70340016	.047MF+80-20%-50VDC-MON-T&R C27, C28	2	FMPU	73711811	73711811	M118-171 C.B. FEMALE MOLEX PIN J22, J23	1	100K	100K	70240034	100K-1/4W-5%-CF-T&R R28
2	100PF	100PF	70340054	100PF-10%-50VDC-T/C-T&R C30, C31	1	MMPU	73711812	73711812	R93-12 PN C.B. MALE MOLEX PIN J24	1	150K	150K	70240035	150K-1/4W-5%-CF-T&R R29
1	2.2A35	2.2A35	70320200	2.2MFD 35VDC LY.CAP T&R C32	1	FMPU	73711811	73711811	M118-171 C.B. FEMALE MOLEX PIN J25	1	220K	220K	70240036	220K-1/4W-5%-CF-T&R R30
1	.068	.068	70340018	.068MF-10%-50VDC-MON-T&R C33	20	SPX1D	SPX1D	73717003	1 STAKE PIN J100, J101, J102, J103, J104, J105, J106, J107, J108, J109, J110, J111, J112, J113, J114, J115, J116, J117, J118, J119	3	240K	240K	70241094	240K-1/4W-5%-CF-T&R R31
1	22A25	22A25	70320012	22MFD +/-20% 25VDC EL AXL C35	28	SPX1U	SPX1U	73717003	1 STAKE PIN J120, J121, J122, J123, J124, J125, J126, J127, J128, J129, J130, J131, J132, J133, J134, J135, J136, J137, J138, J139, J140, J141, J142, J143, J144, J145, J146, J147	1	10K	10K	70240025	10K-1/4W-5%-CF-T&R R32, R33, R34
1	1000A35	1000A35	70320038	1000 MFD 35VDC LYTIC CAP C37	5	SPX1D	SPX1D	73717003	1 STAKE PIN J148, J149, J150, J151, J152	1	220K	220K	70240036	220K-1/4W-5%-CF-T&R R35
2	.022R400	.022R400	70320106	.022 MFD 400V RADIAL MYLAR C41, C42	27	SPX1U	SPX1U	73717003	1 STAKE PIN J153, J154, J155, J156, J157, J158, J159, J160, J161, J162, J163, J164, J165, J166, J167, J168, J169, J170, J171, J172, J200, J201, J300, J500, J501, J502, J503	1	10	10	70240003	10-1/4W-5%-CF-T&R R36
4	.047A400	.047A400	70320105	.047MFD 450 VOLT T&R CAP C43, C45, C46, C47	5	SPX1D	SPX1D	73717003	DPTD OMRON RELAY 12VDC K1, K2, K3, K4, K5	1	4.7K	4.7K	70240023	4.7K-1/4W-5%-CF-T&R R37
1	.01CD	.01CD	70320248	.01MF-20%-1000VDC-CD-T&A C50	4	125SOWD	70900788	70900788	SPACER, 1/8,R(#4),.187 SWAGE ALUM. M10, M11, M12, M13	1	10	10	70240003	10-1/4W-5%-CF-T&R R38
2	330V350	330V350	70320169	330 MFD 350 VDC VERT. SNAP-IN C51, C52	1	J231	J231	70460231	2N5951-3586-J231 40V N-CHANNEL FET T&A Q1	1	4.7K	4.7K	70240023	4.7K-1/4W-5%-CF-T&R R39
2	100V350	100V350	70320130	100 MFD 350VDC RADIAL SNAP-IN C53, C54	1	6530	6531	70466531	MPS-6531 TO92 NPN TRANS. Q2	1	220	220	70240058	220-1/4W-5%-CF-T&R R40
1	47A500	47A500	70320005	47MF 500VDC ELECTROLYTIC -AXIAL C55	1	6533	6534	70466533	MPS-6533/34 TO-92 PNP TRANS T&A Q3	1	1K	1K	70240017	1K-1/4W-5%-CF-T&R R41
2	22A450	22A450	70320020	22 MFD 450VDC LYTIC CAP C56, C57	1	2N3919	3919	70463919	SKA-3919 TO92 NPN TRANS T&A Q4	1	100K	100K	70240034	100K-1/4W-5%-CF-T&R R42
1	.01CD	.01CD	70320248	.01MF-20%-1000VDC-CD-T&A C59	1	J174	J174	70460174	J-174 30V TO-92 P-CHAN FET T&A Q5	1	270	270	70240013	270-1/4W-5%-CF-T&R R43
1	4700R35	4700R35	70350200	4700 MFD 35VDC RADIAL SNAP-IN C60	1	J111	J111	70460111	J-111 35V TO-92 NFET LOW T&A Q6	1	22K	22K	70240029	22K-1/4W-5%-CF-T&R R44
1	2200V35	2200V35	70320113	2200 MFD 35VDC RADIAL LYTIC C61	1	J174	J174	70460174	J-174 30V TO-92 P-CHAN FET T&A Q7	1	10K	10K	70240025	10K-1/4W-5%-CF-T&R R45
2	22A25	22A25	70320012	22MFD +/-20% 25VDC EL AXL C62, C63	1	6530	6531	70466531	MPS-6531 TO92 NPN TRANS. Q8	1	2.2M	2.2M	70240040	2.2M-1/4W-5%-CF-T&R R46
3	220A100	220A100	70320017	220 MFD 100VDC LYTIC CAP C64, C65, C66	1	6533	6534	70466533	MPS-6533/34 TO-92 PNP TRANS T&A Q3	1	10K	10K	70240025	10K-1/4W-5%-CF-T&R R47
1	.001R630	.001R630	70320160	.001MFD 630VDC B-BOX C67	1	2N3919	3919	70463919	SKA-3919 TO92 NPN TRANS T&A Q4	1	4.7K	4.7K	70240023	4.7K-1/4W-5%-CF-T&R R48
1	22A25	22A25	70320012	22MFD +/-20% 25VDC EL AXL C68	1	J174	J174	70460174	J-174 30V TO-92 P-CHAN FET T&A Q5	1	10K	10K	70240025	10K-1/4W-5%-CF-T&R R49
1	470PF	470PF	70340058	470PF-10%-50VDC-T/C-T&R C75	1	J111	J111	70460111	J-111 35V TO-92 NFET LOW T&A Q6	1	270	270	70240013	270-1/4W-5%-CF-T&R R50
1	.001R630	.001R630	70320160	.001MFD 630VDC B-BOX C76	1	J174	J174	70460174	J-174 30V TO-92 P-CHAN FET T&A Q7	1	100W1	100W1	70210003	100-1W-5%-MO-T&R R52
1	.22M	.22M	70330128	.22M 5% 50vdc my T&A C200	1	6530	6531	70466531	MPS-6531 TO92 NPN TRANS. Q8	1	330W2R	330W2R	70250074	330-RSS2W-5%-MO-AXL R54
3	.1P10	.1P10	70340101	.1MF-10%-50VDC-MON-T&R C201, C202, C203	2	22K	22K	70240029	22K-1/4W-5%-CF-T&R R1, R2	1	100	100	70240010	100-1/4W-5%-CF-T&R R55
1	.015	.015	70340010	.015MF-10%-50VDC-T/C-T&R C300	1	150K	150K	70240035	150K-1/4W-5%-CF-T&R R3	1	1.5KW1	1.5KW1	70210007	1.5K-1W-5%-MO-T&R R56
														100-1/4W-5%-CF-T&R R57



BOARD NAME: ULTRA+PWR

** QTY.	NAME	VALUE	PART NUMBER	DESCRIPTION AND DEVICE DESIGNATIONS
1	.0047	.0047	70340007	.0047MF-10%-50VDC-MON-T&R C10
1	22A25	22A25	70320012	22MFD +/-20% 25VDC EL AXL C11
2	100PF	100PF	70340054	100PF-10%-50VDC-T/C-T&R C48, C49
1	100A25	100A25	70320014	100 MFD 25VDC LYTIC CAP C58
2	1N4003	1N4003	70464003	1N4003 200V SILICON DIODE CR11, CR12
2	SR2873	SR2873	70402873	SR2873 2KV,250MA SILICON DIODE CR13, CR14
5	MMPD	73711812	73711812	R93-12 PN C.B.MALE MOLEX PIN J26, J28, J30, J50, J51
7	SPX1D	SPX1D	73717003	1 STAKE PIN J100, J101, J102, J103, J104, J105, J106
2	MMPD	73711812	73711812	R93-12 PN C.B. MALE MOLEX PIN J200, J201
1	HIDMNI	71466214	71466214	2 TIP HID JACK NINS W/SPD J202
1	MMPD	73711812	73711812	R93-12 PN C.B.MALE MOLEX PIN J203
1	SPX1D	SPX1D	73717003	1 STAKE PIN J204
1	MMPD	73711812	73711812	R93-12 PN C.B.MALE MOLEX PIN J205
1	HIDMNI	71466214	71466214	2 TIP HID JACK NINS W/SPD J206
1	SPX1D	SPX1D	73717003	1 STAKE PIN J207
4	MMPD	73711812	73711812	R93-12 PN C.B.MALE MOLEX PIN J208, J209, J210, J211
2	SPX1D	SPX1D	73717003	1 STAKE PIN J213, J214
1	82K	82K	70240033	82K-1/4W-5%-CF-T&R R10
1	330K	330K	70240037	330K-1/4W-5%-CF-T&R R11
2	22K	22K	70240029	22K-1/4W-5%-CF-T&R R74, R75
2	10K	10K	70240025	10K-1/4W-5%-CF-T&R R76, R80
2	100W1	100W1	70210003	100-1W-5%-MO-T&R R93, R94
1	400W10FP	400W10FP	70250019	400-10W-10%-FP-AXL R100
1	SW2368	71322368	71322368	SPTT TOGGLE SWITCH S3
1	SW2328	SW2328	71322328	2PPT PC MOUNT SLIDE SWITCH S4
2	6L6GC	6L6GC	70806604	6L6GC VACUUM TUBE W/8 PIN SOCKET V5, V6

\*\*\*\*\*

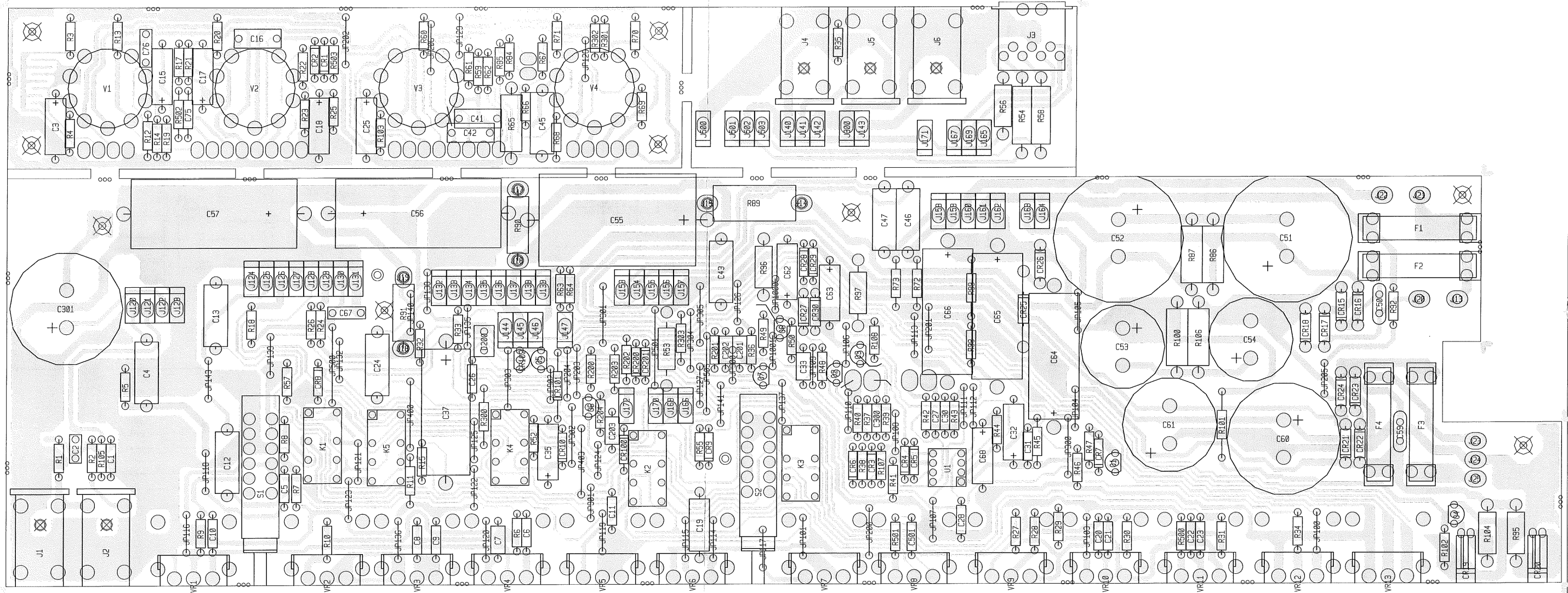


ULTRA 60 POWER

1	330W2R	330W2R	70250074	330-RSS2W-5%-MO-AXL R58
1	470K	470K	70240038	470K-1/4W-5%-CF-T&R R59
1	100K	100K	70240034	100K-1/4W-5%-CF-T&R R60
1	1.5K	1.5K	70240018	1.5K-1/4W-5%-CF-T&R R61
1	1M	1M	70240039	1M-1/4W-5%-CF-T&R R62
1	10K	10K	70240025	10K-1/4W-5%-CF-T&R R63
1	1K	1K	70240017	1K-1/4W-5%-CF-T&R R64
1	22KW1	22KW1	70210005	22K-1W-5%-MO-T&R R65
1	470K	470K	70240038	470K-1/4W-5%-CF-T&R R66
1	470	470	70240015	470-1/4W-5%-CF-T&R R67
1	68K	68K	70240032	68K-1/4W-5%-CF-T&R R68
1	100K	100K	70240034	100K-1/4W-5%-CF-T&R R69
2	68K	68K	70240032	68K-1/4W-5%-CF-T&R R70, R71
2	220K	220K	70240036	220K-1/4W-5%-CF-T&R R72, R73
1	68K	68K	70240032	68K-1/4W-5%-CF-T&R R84
1	4.7K	4.7K	70240023	4.7K-1/4W-5%-CF-T&R R85
2	220KW1	220KW1	70210008	220K-1W-5%-MO-T&R R86, R87
1	4KW5	4KW5	70250050	4K-5W-10%-WW-AXL R89
2	22KW1	22KW1	70210005	22K-1W-5%-MO-T&R R90, R91
1	4.7K	4.7K	70240023	4.7K-1/4W-5%-CF-T&R R92
1	1.5KW1	1.5KW1	70210007	1.5K-1W-5%-MO-T&R R95
2	220W1	220W1	70210019	220-1W-5%-MO-T&R R96, R97
1	470	470	70240015	470-1/4W-5%-CF-T&R R98
1	47K	47K	70240031	47K-1/4W-5%-CF-T&R R99
1	220KW1	220KW1	70210008	220K-1W-5%-MO-T&R R100
1	2.2M	2.2M	70240040	2.2M-1/4W-5%-CF-T&R R101
1	4.7K	4.7K	70240023	4.7K-1/4W-5%-CF-T&R R102
1	1.5K	1.5K	70240018	1.5K-1/4W-5%-CF-T&R R103
1	1.5KW1	1.5KW1	70210007	1.5K-1W-5%-MO-T&R R104
1	470K	470K	70240038	470K-1/4W-5%-CF-T&R R105
1	220KW1	220KW1	70210008	220K-1W-5%-MO-T&R R106
2	4.7K	4.7K	70240023	4.7K-1/4W-5%-CF-T&R R107, R108
1	1M	1M	70240039	1M-1/4W-5%-CF-T&R R200
1	47	47	70240008	47-1/4W-5%-CF-T&R R201
2	100K	100K	70240034	100K-1/4W-5%-CF-T&R R202, R203
1	1K	1K	70240017	1K-1/4W-5%-CF-T&R R204
1	100K	100K	70240034	100K-1/4W-5%-CF-T&R R300
2	22FP	22FP	70240100	22FP-1/4W-5%-FP- R301, R302
1	330	330	70240014	330-1/4W-5%-CF-T&R R303
1	10K	10K	70240025	10K-1/4W-5%-CF-T&R R500
1	22K	22K	70240029	22K-1/4W-5%-CF-T&R R501
1	470K	470K	70240038	470K-1/4W-5%-CF-T&R R502
1	1M	1M	70240039	1M-1/4W-5%-CF-T&R R503
2	DRASW	DRASW	71322256	PC MNT SWITCH DUAL S1, S2
5	375SOW	70900295	70900295	SPACER, 3/8,R(#4),.187 SWAGE ALUM. SO1, SO2, SO3, SO4, SO5
1	4558	4558	70404558	IC RC-4558, P DUAL BI-PKG 10 U1
1	12AX7	12AX7	70806612	12AX7 VACUUM TUBE W/9 PIN PC MNT SOCKET V1, V2, V3, V4
1	1MAVBP5	71190522	71190522	1 MEG AUD MIN VPC 5% TAPER W/BRKT VR1

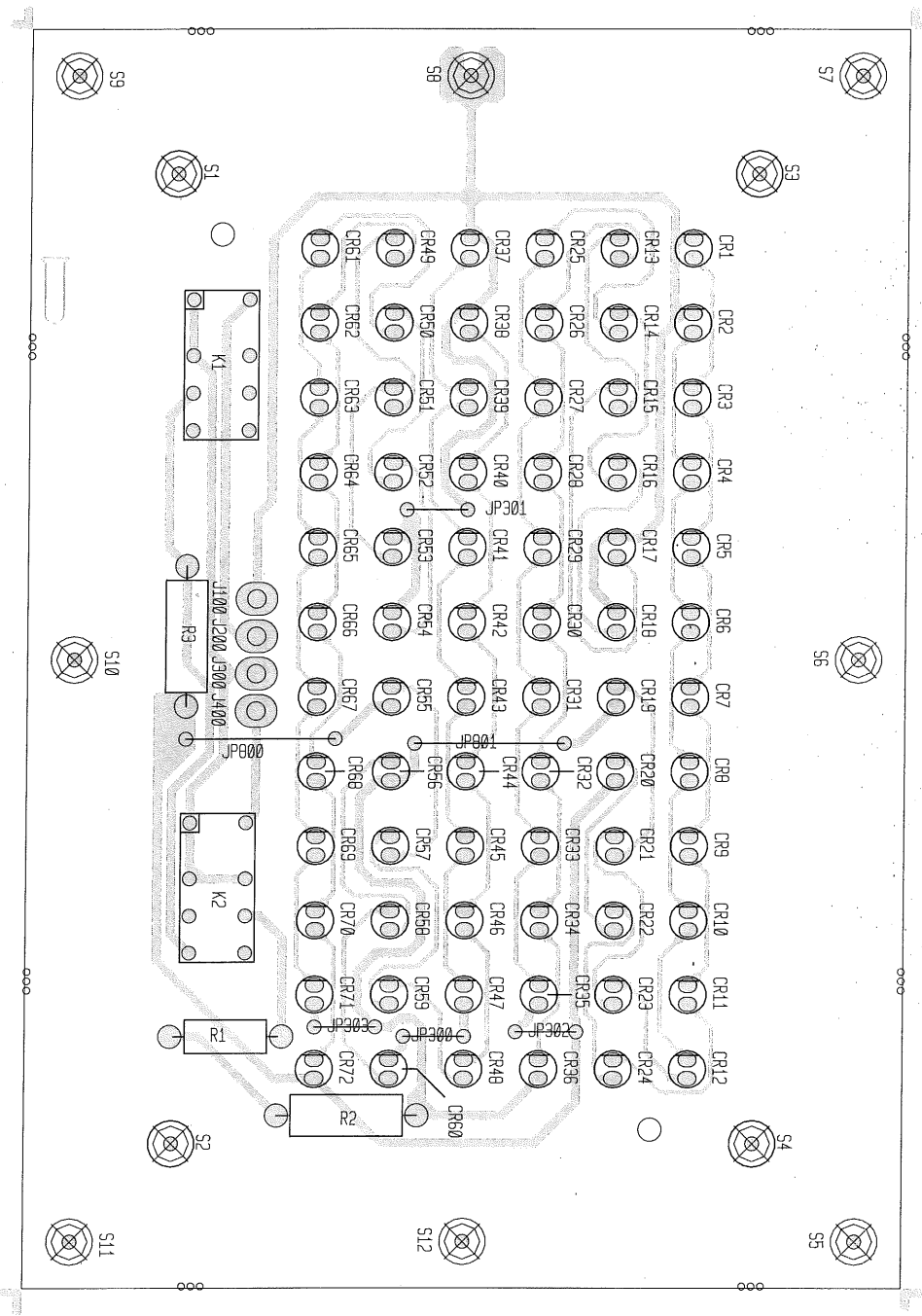
1	250KAVB	71190514	71190514	250K AUD MIN VPC W/BACKET VR2
1	50KBVB	71190511	71190511	50K LIN MIN VPC W/BACKET VR3
1	250KBVB	71190515	71190515	250K LIN MIN VPC W/BACKET VR4
1	50KAVB	71190512	71190512	50K AUD MIN VPC W/BACKET VR5
1	100KBVB	71190517	71190517	100K LIN MIN VPC W/BACKET VR6
1	1MAVBP5	71190522	71190522	1 MEG AUD MIN VPC 5% TAPER W/BRKT VR7
1	100KBVB	71190517	71190517	100K LIN MIN VPC W/BACKET VR8
3	250KBVB	71190515	71190515	250K LIN MIN VPC W/BACKET VR9, VR10, VR11
1	10KBVB	71190510	71190510	10K LIN MIN VPC W/BACKET VR12
1	250KBVB	71190515	71190515	250K LIN MIN VPC W/BACKET VR13

\*\*\*\*\*



Ultra Plus Preamp





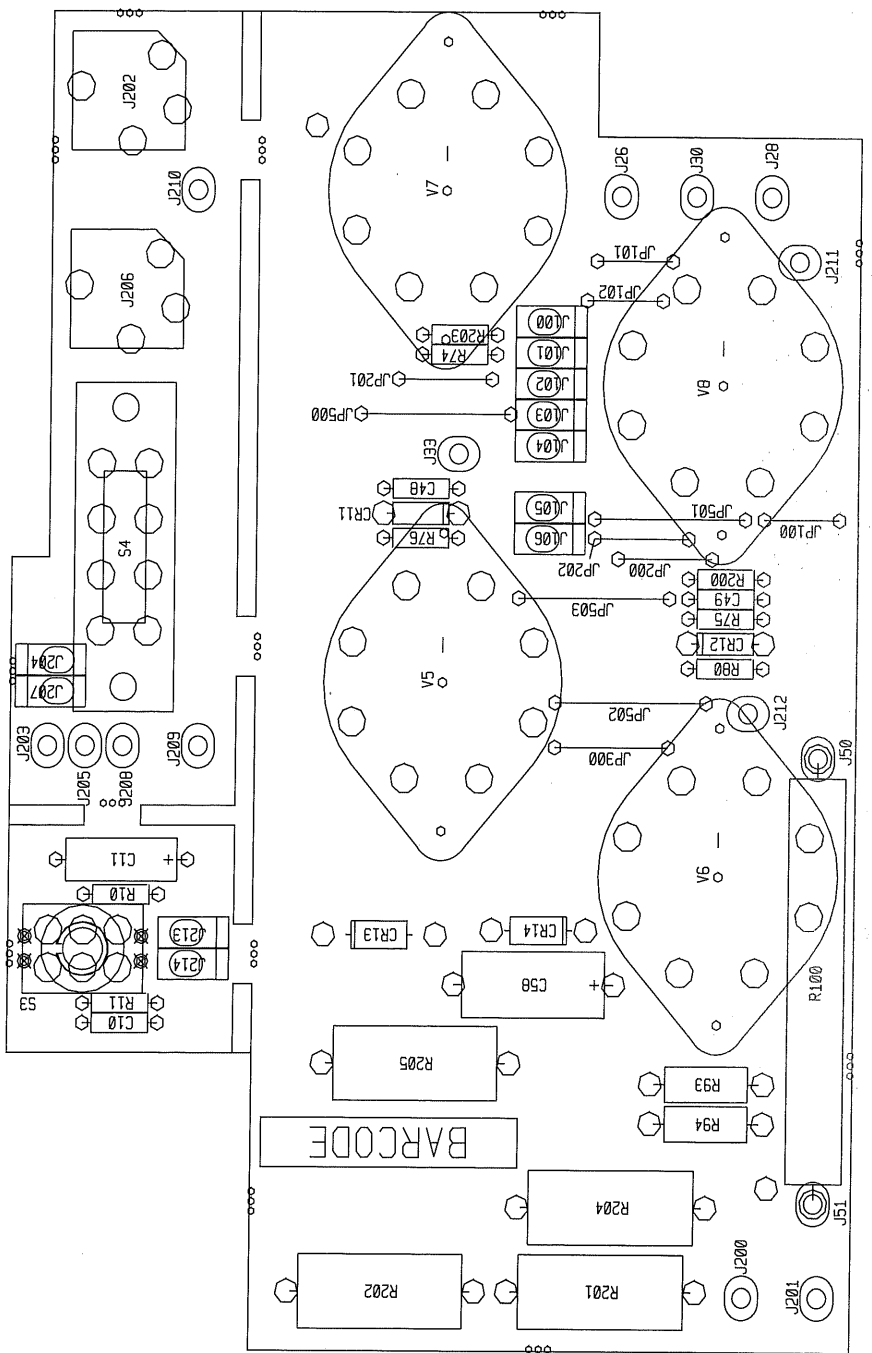
Ultra Plus L.E.D.

B I L L O F M A T E R I A L S R E P O R T

BOARD NAME: ULTRA 120PWR

PART	QTY.	NAME	VALUE	PART	NUMBER	DESCRIPTION AND DEVICE DESIGNATIONS
1	.0047	.0047	.0047	70340007	C10	.0047MF-10%—50VDC—MCA—T&R
1	22K25	22K25	22K25	70320012	C11	22KFD +/-20% 25VDC EL AXL
2	100PF	100PF	100PF	70340054	C11	100PF—10%—50VDC—TTC—T&R
1	100K25	100K25	100K25	70320014	C48, C49	100 MFD 25VDC LYTC CAP
2	1M4003	1M4003	1M4003	70464003	C58	1M4003 200V SILICON DIODE
2	SR2873	SR2873	SR2873	70402873	CR11, CR12	SR2873 2KV, 250MA SILICON DIODE
6	MMPD	73711812	73711812		CR13, CR14	R93-12 PN C.B. MALE MOLEX PIN
7	SPXID	SPXID	73717003			J26, J28, J30, J33, J50, J51
2	MMPD	73711812	73711812			1 STAKE PIN
1	HIDMNI	71466214	71466214			J100, J101, J102, J103, J104, J105, J106
1	MMPD	73711812	73711812			R93-12 PN C.B. MALE MOLEX PIN
1	SPXID	SPXID	73717003			J200, J201
1	MMPD	73711812	73711812			2 TTP HD JACK NINS W/SPD
1	SPXID	SPXID	73717003			J202
1	MMPD	73711812	73711812			R93-12 PN C.B. MALE MOLEX PIN
1	HIDMNI	71466214	71466214			J203
1	SPXID	SPXID	73717003			J204
5	MMPD	73711812	73711812			J205
2	SPXID	SPXID	73717003			R93-12 PN C.B. MALE MOLEX PIN
1	82K	82K	70240033			1 STAKE PIN
1	330K	330K	70240037			J207
2	22K	22K	70240029			R93-12 PN C.B. MALE MOLEX PIN
2	10K	10K	70240025			J208, J209, J210, J211, J212
2	100M1	100M1	70210003			1 STAKE PIN
1	400W10FP	400W10FP	70250019			J213, J214
1	10K	10K	70240025			82K-1/4W-5%—CF—T&R
2	100W5	100W5	70250006			R10
1	10K	10K	70240025			R11
2	100W5	100W5	70250006			22K-1/4W-5%—CF—T&R
1	10K	10K	70240025			R74, R75
2	100W5	100W5	70250006			10K-1/4W-5%—CF—T&R
1	10K	10K	70240025			R76, R80
2	100W5	100W5	70250006			100-1W-5%—MO—T&R
1	SW2328	SW2328	71322328			R93, R94
1	SW2328	SW2328	71322328			400-10W-10%—FP—AXL
4	6L6GC	6L6GC	70806604			R100

\*\*\*\*\*  
 S4  
 2PPT PC MOUNT SLIDE SWITCH  
 S4  
 6L6GC VACUUM TUBE W/8 PIN SOCKET  
 V5, V6, V7, V8  
 \*\*\*\*\*



ULTRA PLUS 120W PWR