


07-792-01 ASSY (TOP SIDE COPPER) TOP VIEW

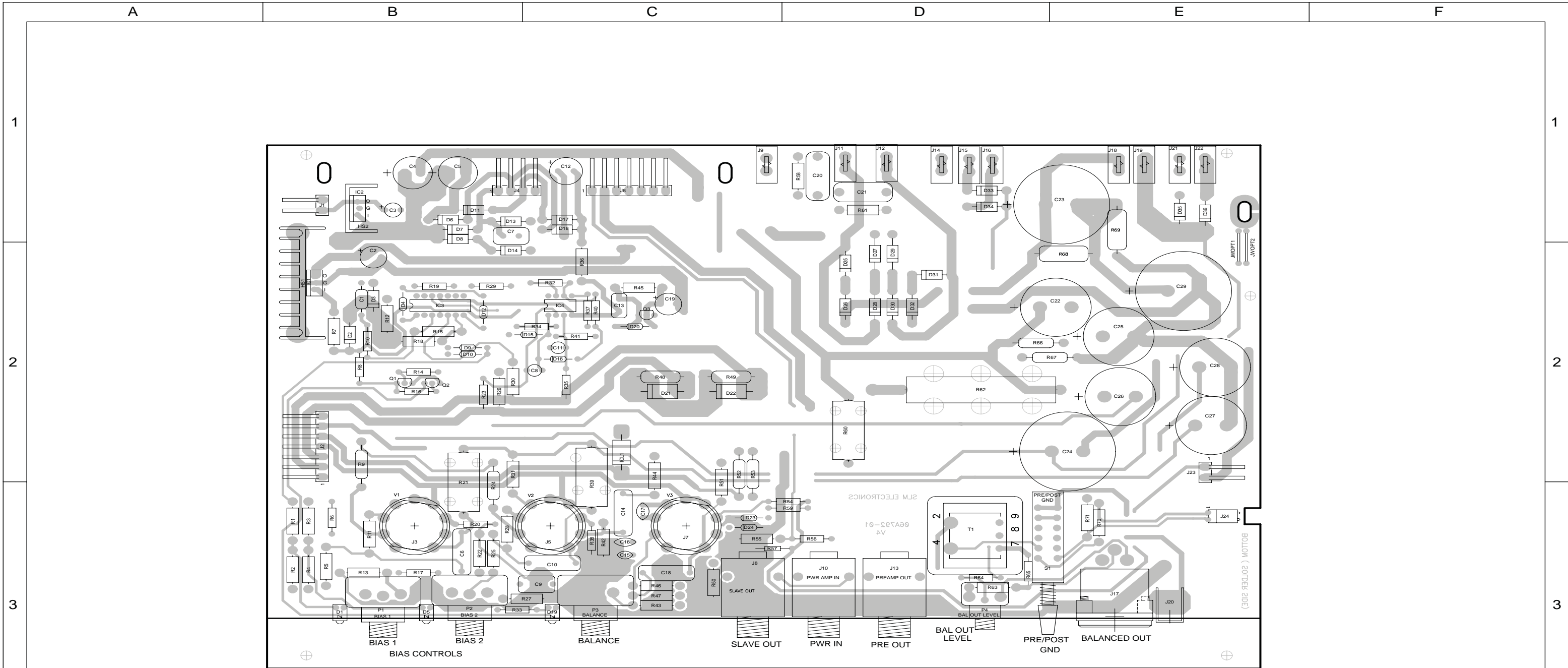
FOR ASSEMBLY P/N: 07-792-01
USE SCHEMATIC # 07S792

- NOTES:
1. APPLY RTV SILICONE SEALANT PER SLM DOCUMENT NUMBER 00A005-00

CAUTION:
THIS ASSEMBLY DRAWING IS PROVIDED FOR USE BY QUALIFIED PERSONNEL.
TO AVOID RISK OF ELECTRIC SHOCK, REFER SERVICING TO QUALIFIED SERVICE PERSONNEL.
DO NOT PERFORM ANY SERVICING BEYOND THAT EXPLAINED IN THE OPERATING INSTRUCTIONS.

REV	Date	DESCRIPTION	Ecr(s)/Ecn(s)	Chgd By	Appvd by	Date
-	-	-	-	-	-	-
A	3/9/06	INITIAL ISSUE				

THE INFORMATION CONTAINED ON THIS DRAWING IS PROPRIETARY TO ST. LOUIS MUSIC, INC.			
Signatures:		Date:	 1901 Congressional, St. Louis, MO 63146
Drawn:	REM	11/03/05	
Checked:		Released:	First Used On:
Plot Date: Tue Mar 14, 2006	Drawing Size: C	Drawing Title: PWA-300W PWR AMP/SUPPLY	
Plot Time: 10:53:44	Drawing Type: ASSEMBLY	Drawing Number: 07-792	
Tolerance:	Class Code: NONE	Sheet 1 of 2	



07-792-01 ASSY (BOTTOM SIDE COPPER) TOP VIEW


FOR ASSEMBLY P/N: 07-792-01
USE SCHEMATIC # 07S792

NOTES:

1. APPLY RTV SILICONE SEALANT PER SLM DOCUMENT NUMBER 00A005-00

CAUTION:
THIS ASSEMBLY DRAWING IS PROVIDED FOR USE BY QUALIFIED PERSONNEL.
TO AVOID RISK OF ELECTRIC SHOCK, REFER SERVICING TO QUALIFIED SERVICE PERSONNEL.
DO NOT PERFORM ANY SERVICING BEYOND THAT EXPLAINED IN THE OPERATING INSTRUCTIONS.

REV	Date	DESCRIPTION	Ecr(s)/Ecn(s)	Chgd By	Appvd by	Date
-	-	-	-	-	-	-
A	3/9/06	INITIAL ISSUE				

THE INFORMATION CONTAINED ON THIS DRAWING IS PROPRIETARY TO ST. LOUIS MUSIC, INC.			
Signatures:		Date:	 1901 Congressional, St. Louis, MO 63146
Drawn:	REM	11/03/05	
Checked:		Released:	First Used On:
Plot Date: Tue Mar 14, 2006	Drawing Size: C	Drawing Title: PWA-300W PWR AMP/SUPPLY	
Plot Time: 10:53:15	Drawing Type: ASSEMBLY	Drawing Number: 07-792	
Tolerance:	Class Code: NONE		
Sheet 2 of 2			