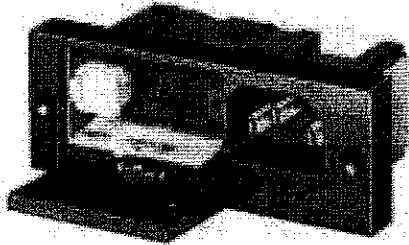


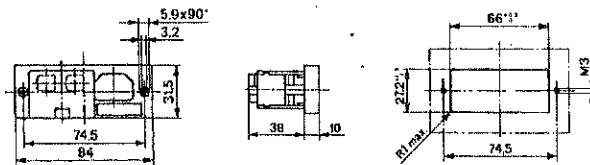
8843 AC Inlet • Series Parallel Voltage Selector • Interchangeable Fusedrawer for 1/4 x 1 1/4" or 5 x 20mm Fuses



Note: Not recommended for new designs. Refer to KE, page 41.

- Power entry module with 1-pole or 2-pole fuseholder
- For "cold" connections 65° C, Protection Class I.
- Screw-on or snap-in mount from front
- Single or double pole shocksafe fuseholder according to IEC 65/VDE 0860 for 1/4 x 1 1/4" or 5 x 20mm fuses (plug removal necessary for fuse replacement)
- Voltage selector with series parallel connections, 4 switch positions
- Solder terminals .118 x .032" (3.0 x 0.8mm)
- 0.5 Nm torque required for M3 screws for screw-on type
- Max. power dissipation according to IEC 127-6 on request. (For information, see page 5).

UL	recognition	10A/250V	File #E93617
CSA	certification	10A/250V	File #LR38456
VDE	approval	10A/250V	File #2096, expert report
SEMKO	approval	10A/250V	} File numbers on request
SEV	approval	10A/250V	



Standards: UL 498; CSA C22.2/182.3; DIN/VDE 0625; SEMKO 9320; IEC 320/C14; EN 60320

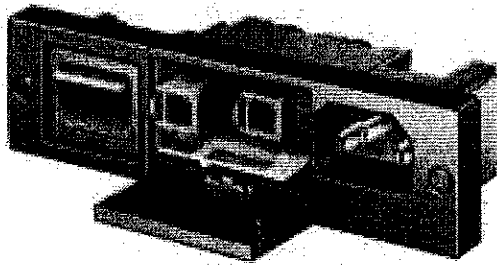


Order Numbers (type)

Note: Casing and fuseholders must be ordered separately. To order fuses, please see page 102.

8843 casing without switch	1-pole fusing	2-pole fusing	Mounting	Fuseholder Inserts* (order 2 inserts for 2-pole casing)
8843.1751 (8843-1.751.60)	8843.1761 (8843-1.761.60)		Screw on	8843.0901 for 1/4 x 1 1/4" (8843-901.60) (6.3x32mm)
8843.1451 (8843-1.451.60)	8843.1461 (8843-1.461.60)		Snap-in	8843.0902 for 5 x 20mm (8843-902.60)

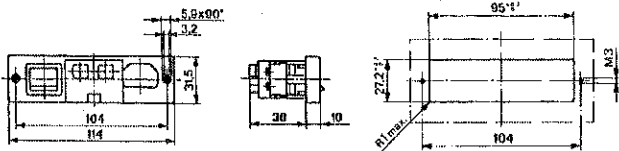
8843 AC Inlet • On/Off Line Switch • Series Parallel Voltage Selector • Interchangeable Fusedrawer for 1/4 x 1 1/4" or 5 x 20mm Fuses



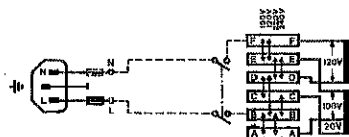
Note: Not recommended for new designs. Refer to KG, page 42.

- Power entry module with 1-pole or 2-pole fuseholder
- For "cold" connections 65° C, Protection Class I.
- Screw-on or snap-in mount from front
- Single or double pole shocksafe fuseholder according to IEC 65/VDE 0860 for 1/4 x 1 1/4" or 5 x 20mm fuses (plug removal necessary for fuse replacement)
- DPST on/off line switch
- Voltage selector with series parallel connections, 4 switch positions
- Solder terminals .118 x .032" (3.0 x 0.8mm)
- 0.5 Nm torque required for M3 screws for screw-on type
- Max. power dissipation according to IEC 127-6 on request. (For information, see page 5).

UL	recognition	10A/250V	File #E93617
CSA	certification	10A/250V	File #LR38456
VDE	approval	10A/250V	File #2096, expert report
SEMKO	approval	10A/250V	} File numbers on request
SEV	approval	10A/250V	



Standards: UL 498; CSA C22.2/182.3; DIN/VDE 0625; SEMKO 9320; IEC 320/C14; EN 60320



Order Numbers (type)

Note: Casing and fuseholders must be ordered separately. To order fuses, please see page 102.

8843 casing with switch	1-pole fusing	2-pole fusing	Mounting	Fuseholder Inserts* (order 2 inserts for 2-pole casing)
8843.4851 (8843-4.851.60)	8843.4861 (8843-4.861.60)		Screw on	8843.0901 for 1/4 x 1 1/4" (8843-901.60) (6.3x32mm)
8843.4451 (8843-4.451.60)	8843.4461 (8843-4.461.60)		Snap-in	8843.0902 for 5 x 20mm (8843-902.60)