

Service Manual

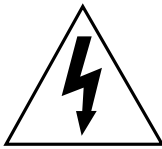
HD 1501



- **Quick Parts List**
- **Schematics**
- **More!**



	CAUTION AVIS RISK OF ELECTRIC SHOCK. DO NOT OPEN RISQUE DE CHOC ELECTRIQUE. NE PAS OUVRIR	
<p>CAUTION: TO REDUCE THE RISK OF ELECTRIC SHOCK DO NOT REMOVE COVER (OR BACK) NO USER-SERVICEABLE PARTS INSIDE. REFER SERVICING TO QUALIFIED PERSONNEL</p> <p>ATTENTION: POUR EVITER LES RISQUES DE CHOC ELECTRIQUE, NE PAS ENLEVER LE COUVERCLE. AUCUN ENTRETIEN DE PIECES INTERIEURES PAR L'USAGER. CONFIER L'ENTRETIEN AU PERSONNEL QUALIFIE.</p> <p>AVIS: POUR EVITER LES RISQUES D'INCENDIE OU D'ELECTROCUTION, N'EXPOSEZ PAS CET ARTICLE A LA PLUIE OU A L'HUMIDITE</p>		



The lightning flash with arrowhead symbol within an equilateral triangle is intended to alert the user to the presence of uninsulated "dangerous voltage" within the product's enclosure, that may be of sufficient magnitude to constitute a risk of electric shock to persons.

Le symbole éclair avec point de flèche à l'intérieur d'un triangle équilatéral est utilisé pour alerter l'utilisateur de la présence à l'intérieur du coffret de "voltage dangereux" non isolé d'ampleur suffisante pour constituer un risque d'électrocution.



The exclamation point within an equilateral triangle is intended to alert the user of the presence of important operating and maintenance (servicing) instructions in the literature accompanying the appliance.

Le point d'exclamation à l'intérieur d'un triangle équilatéral est employé pour alerter les utilisateurs de la présence d'instructions importantes pour le fonctionnement et l'entretien (service) dans le livret d'instruction accompagnant l'appareil.

Safety Warning:



Caution! These instructions are for use by qualified personnel only!
To avoid electric shock, do not perform any servicing unless you are qualified to do so.
Refer all service to qualified personnel.

ESD Warning:



To avoid damage by electrostatic discharge all standard ESD precautions must be taken.



Table of Contents

Specifications 4

!!!Service Bulletins / Kits and Modifications (Please Review Before Servicing)!!!..... 6

Block Diagram 7

Quick Parts 8

Final Assembly Diagrams..... 9

Final Assembly Quick Parts..... 11

Grille Subassembly Diagrams..... 12

Grille Subassembly Quick Parts..... 13

Amplifier Subassembly Diagrams 14

Amplifier Subassembly Quick Parts 21

0031103-XX PCB ASSY LED SR V2 (TOP) 23

0031103-XX PCB ASSY LED SR V2 (BOTTOM) 24

0031103-XX SCHEMATIC LED SR V2 (TOP) 25

0033371-XX PCB ASSY FS INPUT BOARD(TOP) 26

0033371-XX PCB ASSY FS INPUT BOARD(BOTTOM) 27

0033371-XX SCHEMATIC FS INPUT BOARD (I/O_AND_EQ) 28

0033371-XX SCHEMATIC FS INPUT BOARD (COMPRESSOR_LIMITER) 29

0020664-XX PCB ASSY 500/300W CLASS D AMP (TOP) 30

0020664-XX PCB ASSY 500/300W CLASS D AMP (BOTTOM) 31

0020664-XX SCHEMATIC 500/300W CLASS D AMP (CONNECTORS/PROTECTION) 32

0020664-XX SCHEMATIC 500/300W CLASS D AMP (CLASS D AMPLIFIER) 33

0027030-XX PCB ASSY POWER SUPPLY (TOP) 34

0027030-XX PCB ASSY POWER SUPPLY (BOTTOM) 35

0027030-XX SCHEMATIC POWER SUPPLY (MAIN SUPPLY) 36

0027030-XX SCHEMATIC POWER SUPPLY (AUX SUPPLY) 37

0033474-XX PCB ASSY FS OUTPUT BOARD (TOP) 38

0033474-XX PCB ASSY FS OUTPUT BOARD (BOTTOM)..... 39

0033474-XX SCHEMATIC FS OUTPUT FILTER 40



HD1501 SPECIFICATIONS

Acoustic Performance

Frequency Response (-10 dB):	36 Hz – 145 Hz
Frequency Response (-3 dB):	43 Hz – 92 Hz
Max peak SPL (calculated) ¹ :	131 dB
Max peak SPL (measured) ² :	126 dB

Transducer

Diameter:	15.0 in / 381 mm
Voice Coil Diameter:	3.0 in / 76 mm
Diaphragm Material:	Paper
Magnet Material:	Ferrite

Power Amplifier

Rated Power:	600 watts rms 1200 watts peak
THD:	< 0.03%
Design:	Class D
Cooling:	Active, twin thermally controlled vari-speed fans

Input/Output

Input Type:	Female XLR Balanced differential (stereo left/right)
Input Impedance:	20 k Ω
Full Range Output:	Male XLR Balanced (parallel with input)
High Pass Output:	Male XLR Balanced
Output Impedance:	300 Ω
Level Control:	-6 dB to +6 dB

Electronic Crossover

Crossover Type:	24 dB/oct. Symmetrical Linkwitz-Riley
Crossover Frequency:	100 Hz

¹ Calculated from peak driver sensitivity and amplifier power, half space.

² Measured with swept sine at 1 W within operating range, scaled for max power, half space.



Protection Features

Over-excursion Protection:	45 Hz 24 dB/oct. Butterworth High Pass Filter
Thermal Protection:	Amplifier mute, auto reset, twin thermally controlled vari-speed fans
Driver Protection:	Peak/RMS Limiter
Display LEDs:	Power Light ON, Polarity Invert, Thermal, Sig/Limit, Front Power ON

AC Power Requirements

US:	100-120 VAC, 50-60 Hz, 300 watts
Europe:	220-240 VAC, 50-60 Hz, 300 watts
AC Connector:	3-pin IEC 250 VAC, 15 A male

Construction Features

Basic Design:	Rectangular
Material:	15 mm exterior grade premium birch plywood
Finish:	High durability black paint
Handles:	One on each side
Grille:	Powder-coated galvanized steel

Physical Properties

Height:	20.0 in / 508 mm
Width:	18.25 in / 464 mm
Depth:	25.0 in / 635 mm
Weight:	80.0 lb / 36.3 kg

Mounting Methods

Floor mount only

WARNING: The cabinet has no rigging points and is not suitable for rigging. NEVER attempt to suspend the HD1501 by its handles.

Disclaimer

Since we are always striving to make our products better by incorporating new and improved materials, components, and manufacturing methods, we reserve the right to change these specifications at any time without notice.

“Mackie” and the “Running Man” figure are registered trademarks of LOUD Technologies Inc.

All other brand names mentioned are trademarks or registered trademarks of their respective holders, and are hereby acknowledged.



!!!Service Bulletins / Kits and Modifications (Please Review Before Servicing)!!!

Service Bulletins

None as of this document revision.

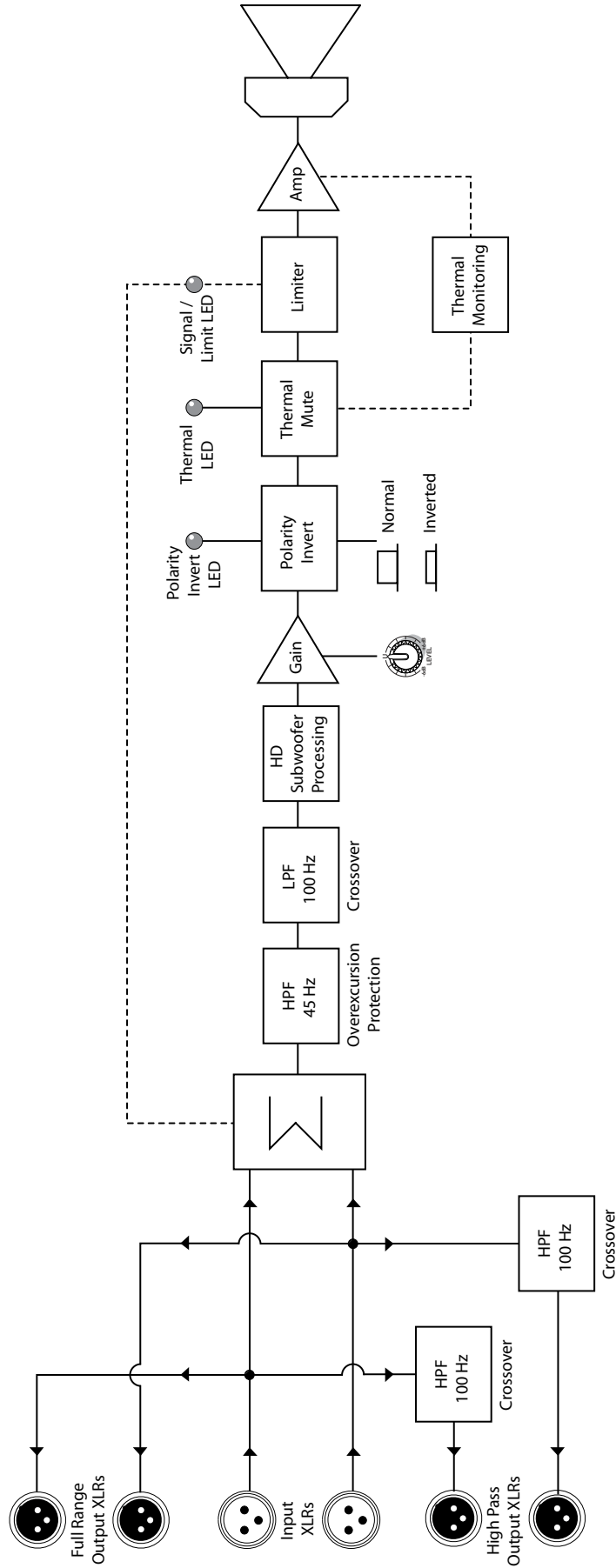
Service Kits

None as of this document revision.

Modifications

None as of this document revision.

NOTES:





Part Number	Description	Retail Price*	Dealer Price*
2036312	Amp Module Kit 100-120V HD1501	\$506.10	\$253.00
2036313	Amp Module Kit 220-240V HD1501	\$506.10	\$253.00
2036312-B	Amp Module Kit 100-120V HD1501 B-Stock	\$430.19	\$215.10
2035577	Grille Kit	\$55.00	\$27.50
2034356	Feet	\$1.50	\$0.75
0006433	Cup Handle Assembly	\$19.00	\$9.50
0015276	LF Driver	\$176.62	\$86.31

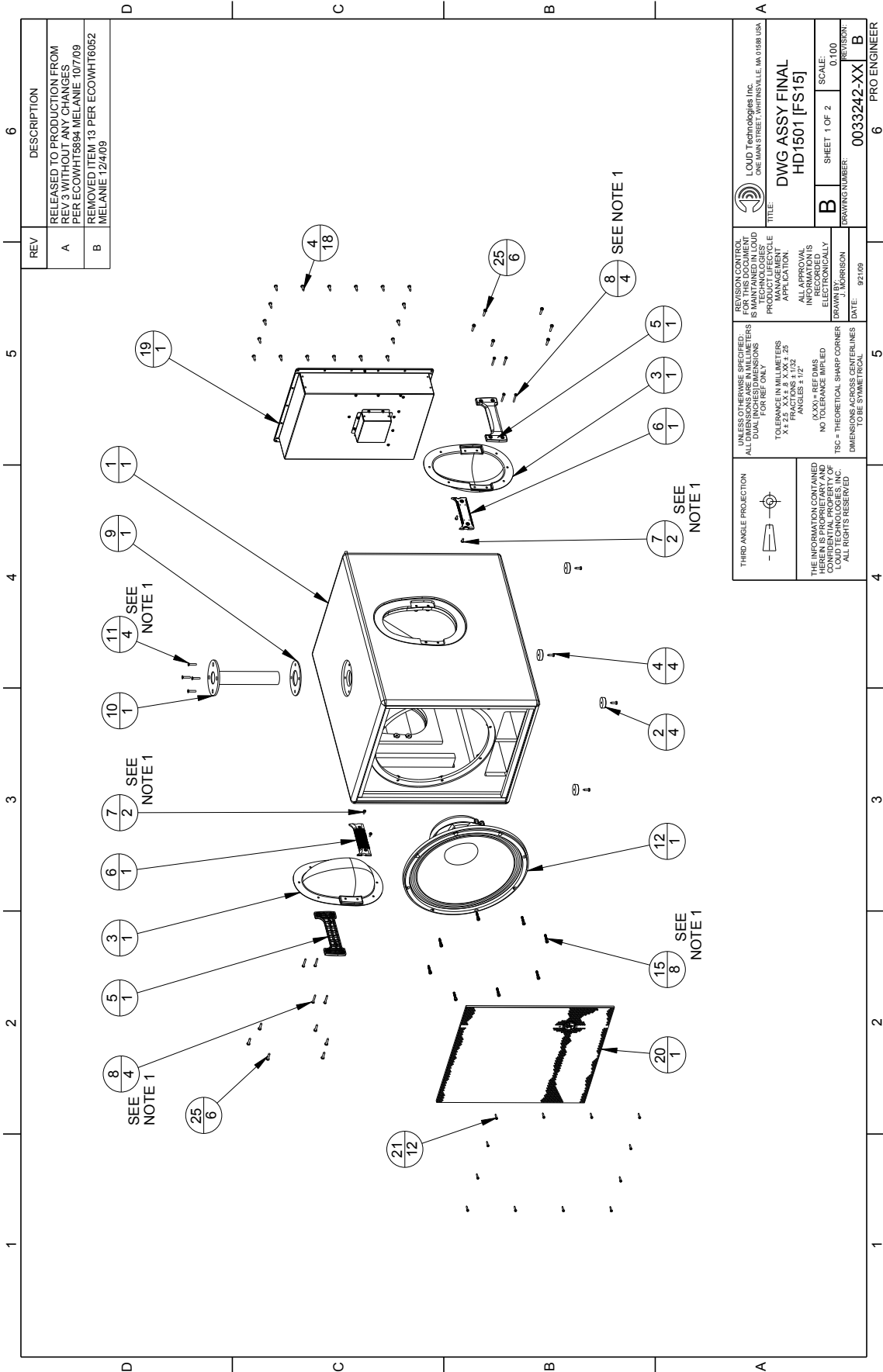
*All pricing is retail and in USD.
Pricing and availability are subject
to change without notice.

Mackie.com



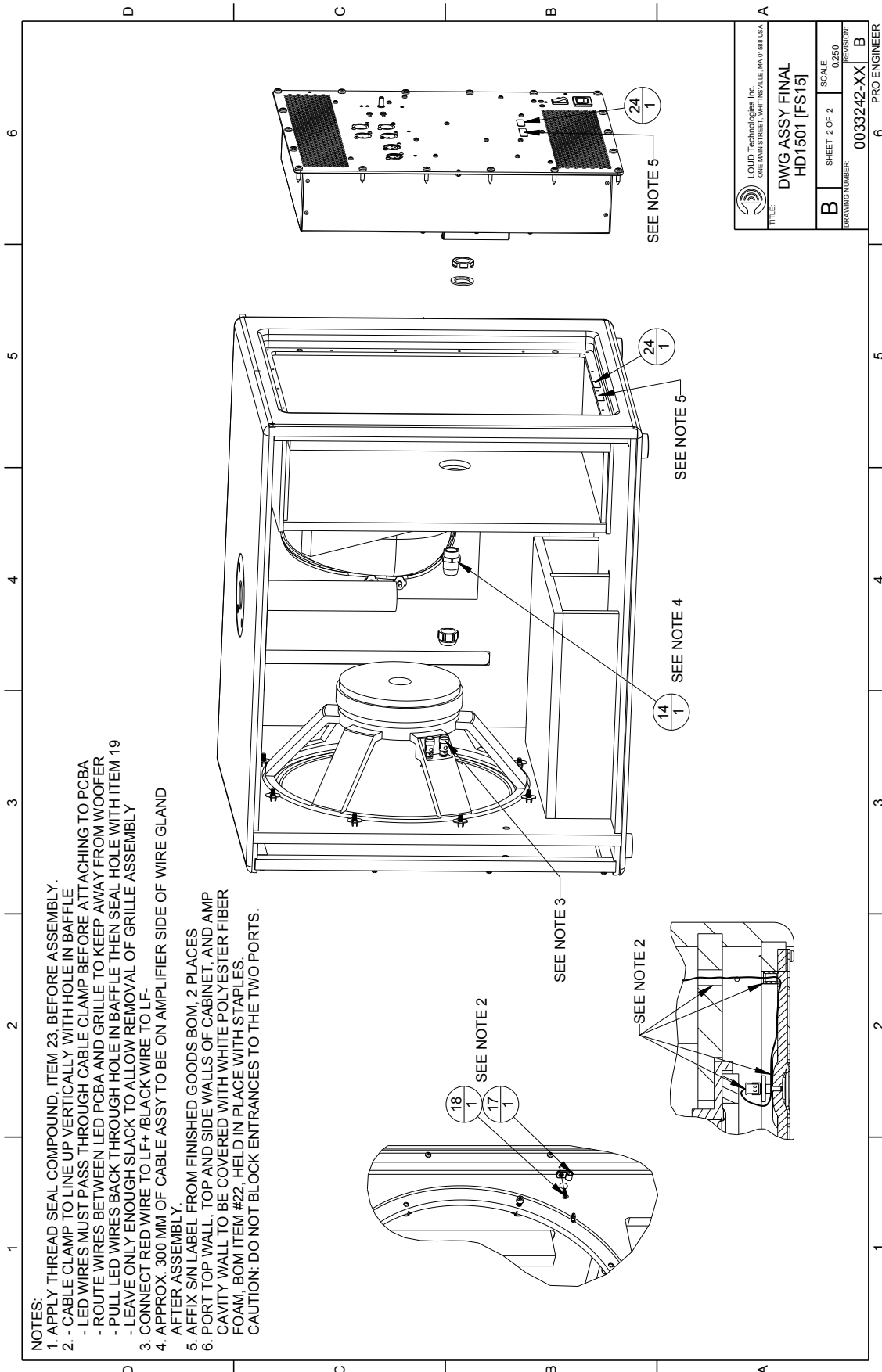
Contact

Phone: 1-800-898-3211 ext. 1623
Email: parts@loudtechinc.com



REV	DESCRIPTION
A	RELEASED TO PRODUCTION FROM REV.3 WITHOUT ANY CHANGES PER ECOVHT5894 MELANIE 10/7/09
B	REMOVED ITEM 13 PER ECOVHT6052 MELANIE 12/4/09

		DIMENSION CONTROL FOR THIS DOCUMENT IS MAINTAINED IN L.O.D. ALL DIMENSIONS ARE IN MILLIMETERS DUAL INCHES DIMENSIONS FOR REF ONLY TOLERANCE IN MILLIMETERS ANGLES ± 1/2° NO TOLERANCE W/ R.D. DIMENSIONS TO CENTER LINES DATE: 9/21/09	
THE INFORMATION CONTAINED HEREIN IS PROPRIETARY AND CONFIDENTIAL PROPERTY OF LIQUID TECHNOLOGIES, INC. ALL RIGHTS RESERVED		REVISION CONTROL ALL PERSONAL INFORMATION IS RECORDED ELECTRONICALLY DRAWN BY: J. MORRISON DATE: 9/21/09	
LIQUID Technologies Inc. ONE MAIN STREET, WHITINSVILLE, MA 01588 USA		TITLE DWG ASSY FINAL HD1501 [FS15]	
SHEET 1 OF 2 SCALE: 0.100		DRAWING NUMBER: 0033242-XX	
B		REVISION: B	
6		PRO ENGINEER	



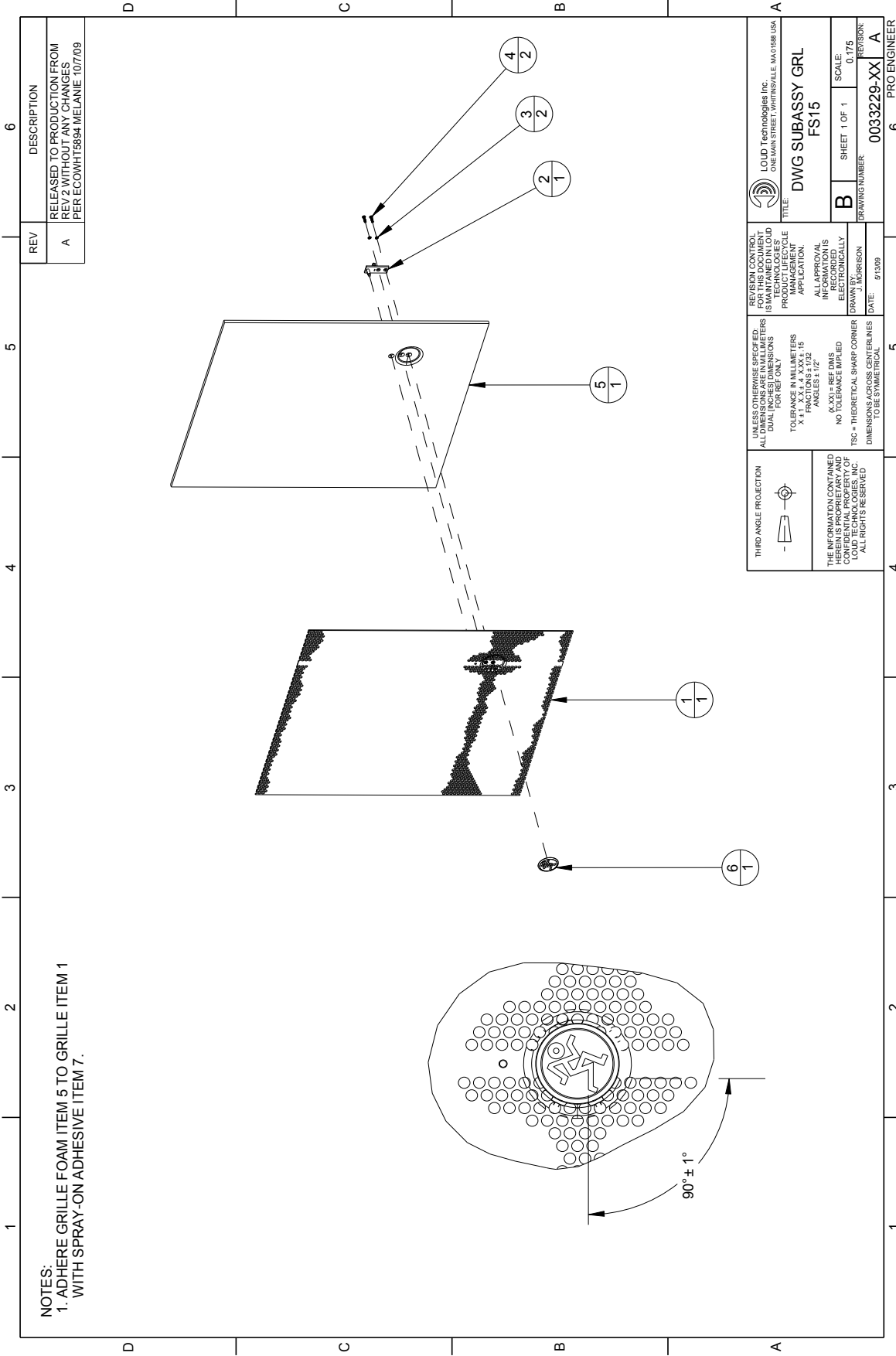
NOTES:

- 1. APPLY THREAD SEAL COMPOUND, ITEM 23, BEFORE ASSEMBLY.
- 2. - CABLE CLAMP TO LINE UP VERTICALLY WITH HOLE IN BAFFLE
- LED WIRES MUST PASS THROUGH CABLE CLAMP BEFORE ATTACHING TO PCBA
- ROUTE WIRES BETWEEN LED PCBA AND GRILLE TO KEEP AWAY FROM WOOFER
- PULL LED WIRES BACK THROUGH HOLE IN BAFFLE THEN SEAL HOLE WITH ITEM 19
- LEAVE ONLY ENOUGH SLACK TO ALLOW REMOVAL OF GRILLE ASSEMBLY
- 3. CONNECT RED WIRE TO LF+ /BLACK WIRE TO LF-
- 4. APPROX. 300 MM OF CABLE ASSY TO BE ON AMPLIFIER SIDE OF WIRE GLAND AFTER ASSEMBLY.
- 5. AFFIX S/N LABEL FROM FINISHED GOODS BOM, 2 PLACES
- 6. PORT TOP WALL, TOP AND SIDE WALLS OF CABINET, AND AMP CAVITY WALL TO BE COVERED WITH WHITE POLYESTER FIBER FOAM. BOM ITEM #22, HELD IN PLACE WITH STAPLES. CAUTION: DO NOT BLOCK ENTRANCES TO THE TWO PORTS.

LOUD Technologies Inc. ONE MAIN STREET, WHITINSVILLE, MA 01888, USA	
TITLE: DWG ASSY FINAL HD1501 [FS15]	
B	SHEET 2 OF 2
SCALE: 0,250	
DRAWING NUMBER: 0033242-XX	REVISION: B
6 PRO ENGINEER	



Item	Part Number	Description
1	0033239	CAB PAINTED BLACK FS15
2	2034356	FOOT RUBBER TOP SOUND JD-3310-N
3	0006433	SUBASSY CUP HANDLE-GASKET 024009 030013 MCK
4	0009940	SCREW/M4.8 X 19 PH PHSMS BLK[DIN7981C]
5	33920590	CAST HANDLE SPKR
6	760-115-00	SIDE HANDLE GRIP SRM450
7	0009937	SCREW M4 X 10 PH PHMS BLK[DIN7500C]
8	51150351	SCR M4 X 30 PH PHMS BLK
9	030012	GASKET/TOP HAT[MCK]
10	2036353	TOP HAT 203MM TOP SOUND BLK
11	0010027	SCREW/M5X25 PH FHMS [DIN965 A]
12	0015276	XDCR DRIVER CONE LC15/3007-8
14	0027236	CONN SKINTOP STRAIN RELIEF BLK
15	0010073	SCR CAP M5x25 SKT STL BLK
16	0033260-04	ASSY AMPLIFIER HD1501 [FS15] 100-120V OEM
17	0031068	CLAMP CABLE NYLON 3/16 INCH DIA BLK
18	0029033	SCR SELFTAP WOOD 3.5X15MM FLH PHILLIP STL BLK ZN
19	0005930	TAPE WEATHERBAN 3M 5354 1/8" X 3/8" CASE
20	0033229	SUBASSY GRL HD1501 [FS15]
21	0010481	SCREW/M3.5 X 19 PH PHSMS BLK[DIN7981C]
22	0032895	POLYESTER FILL 25MM THK
23	730-025-00	LOCTITE 222
24	0033468	LBL REVISION GENERIC 13mm X 9.5mm
25	0009951	SCREW/M4.8 X 25 PH PHSMS BLK[DIN7981C]



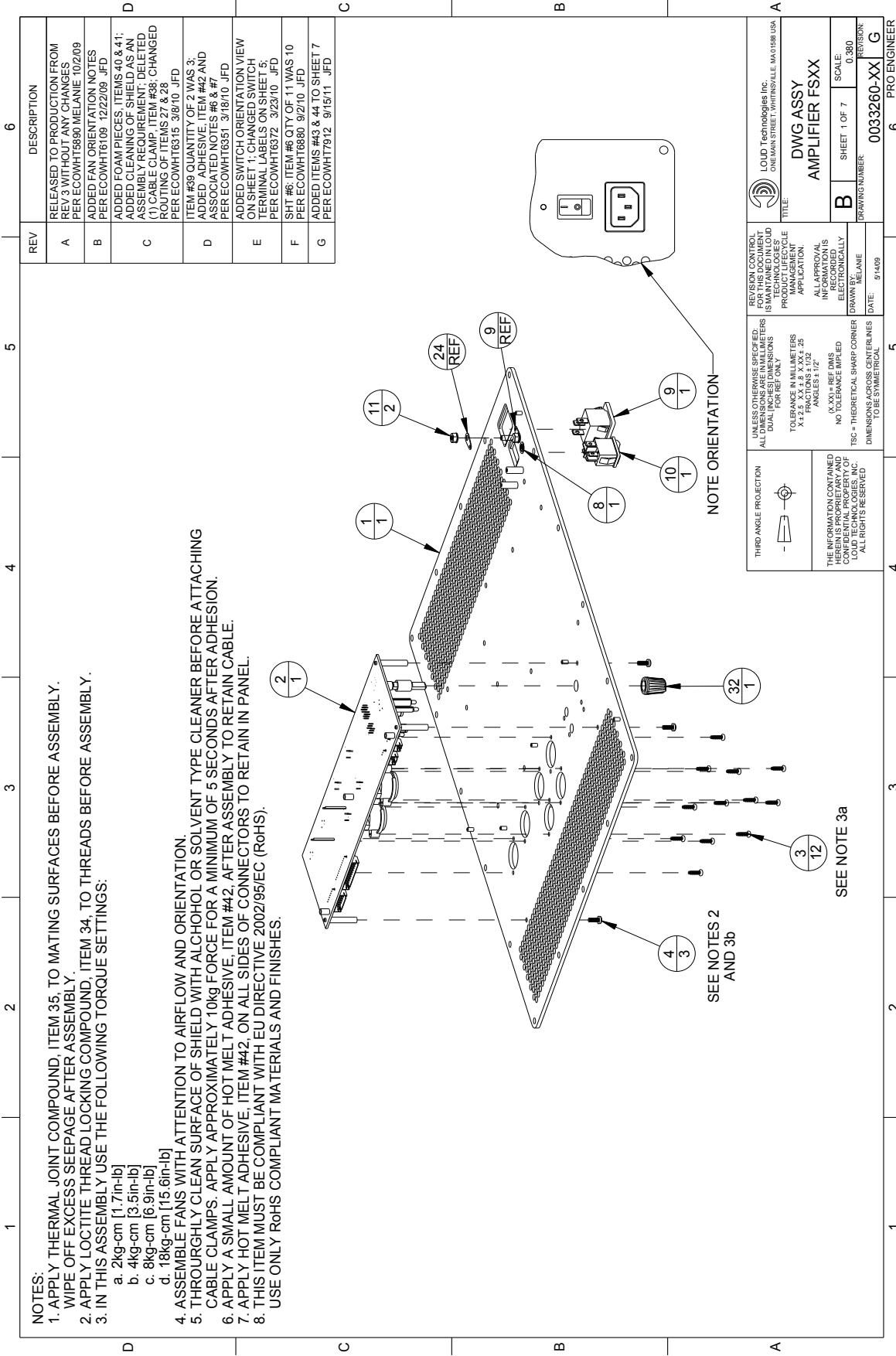
NOTES:
 1. ADHERE GRILLE FOAM ITEM 5 TO GRILLE ITEM 1 WITH SPRAY-ON ADHESIVE ITEM 7.

REV	DESCRIPTION
A	RELEASED TO PRODUCTION FROM PERECOMPT15884 MELANIE 10/7/09

	UNLESS OTHERWISE SPECIFIED: ALL DIMENSIONS ARE IN MILLIMETERS DIMENSIONS FOR REF ONLY TOLERANCE IN MILLIMETERS X ± 1, X.X ± 0.1, X.XX ± 0.05 ANGLES ± 1°	REVISION CONTROL FOR THIS DRAWING IS CONTAINED IN TECHNOLOGIES' PROJECT FILE MANAGEMENT APPLICATION ALL APPROVAL INFORMATION IS ELECTRONICALLY DRAWN BY: J. MORRISON DATE: 9/13/09	LOUD Technologies Inc. ONE MAIN STREET, WHITINSVILLE, MA 01886 USA
	THE INFORMATION CONTAINED HEREIN IS PROPRIETARY AND CONFIDENTIAL PROPERTY OF LOUD TECHNOLOGIES, INC. ALL RIGHTS RESERVED.	TITLE: DWG SUBASSY GRL FS15	SCALE: 0.175
DRAWING NUMBER: 0033229-XX		SHEET 1 OF 1	PRO ENGINEER 6

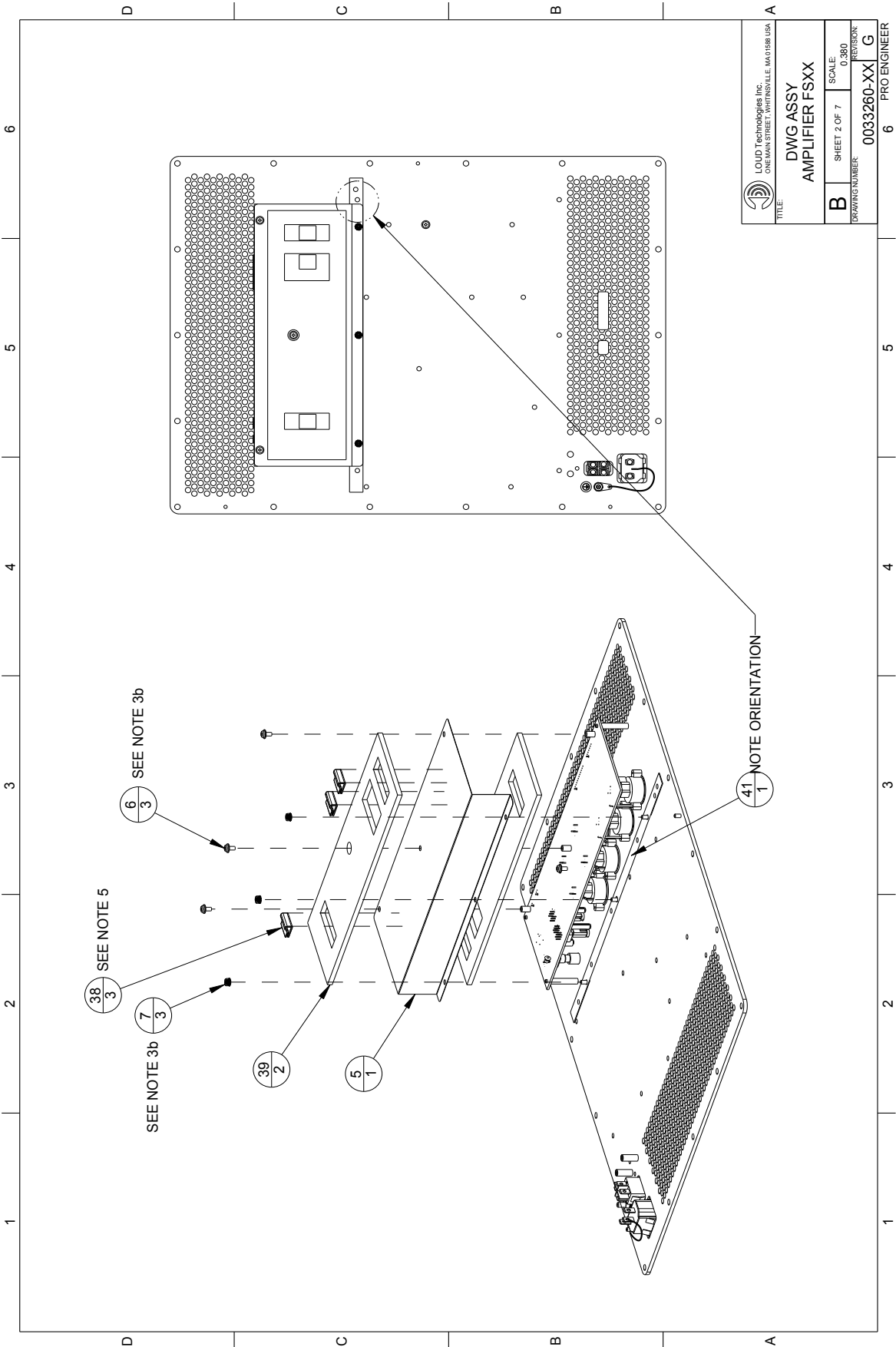


Item	Part Number	Description
1	0033235	GRL FS15
2	0031103-00	PCB ASSY LED SR V2
3	0010037	WASHER/LOCK/M3[DIN127B]
4	0026672	SCR SEMS M3X12 PNH PHILLIP STL BLK ZN
5	0033236	FOAM GRL FS15
6	0025953	LBL LOGO STAMPED METAL RUNNING MAN
7	0005929-90	ADHESIVE/SPRAY/GRILL FOAM/PAIL[CHINA]

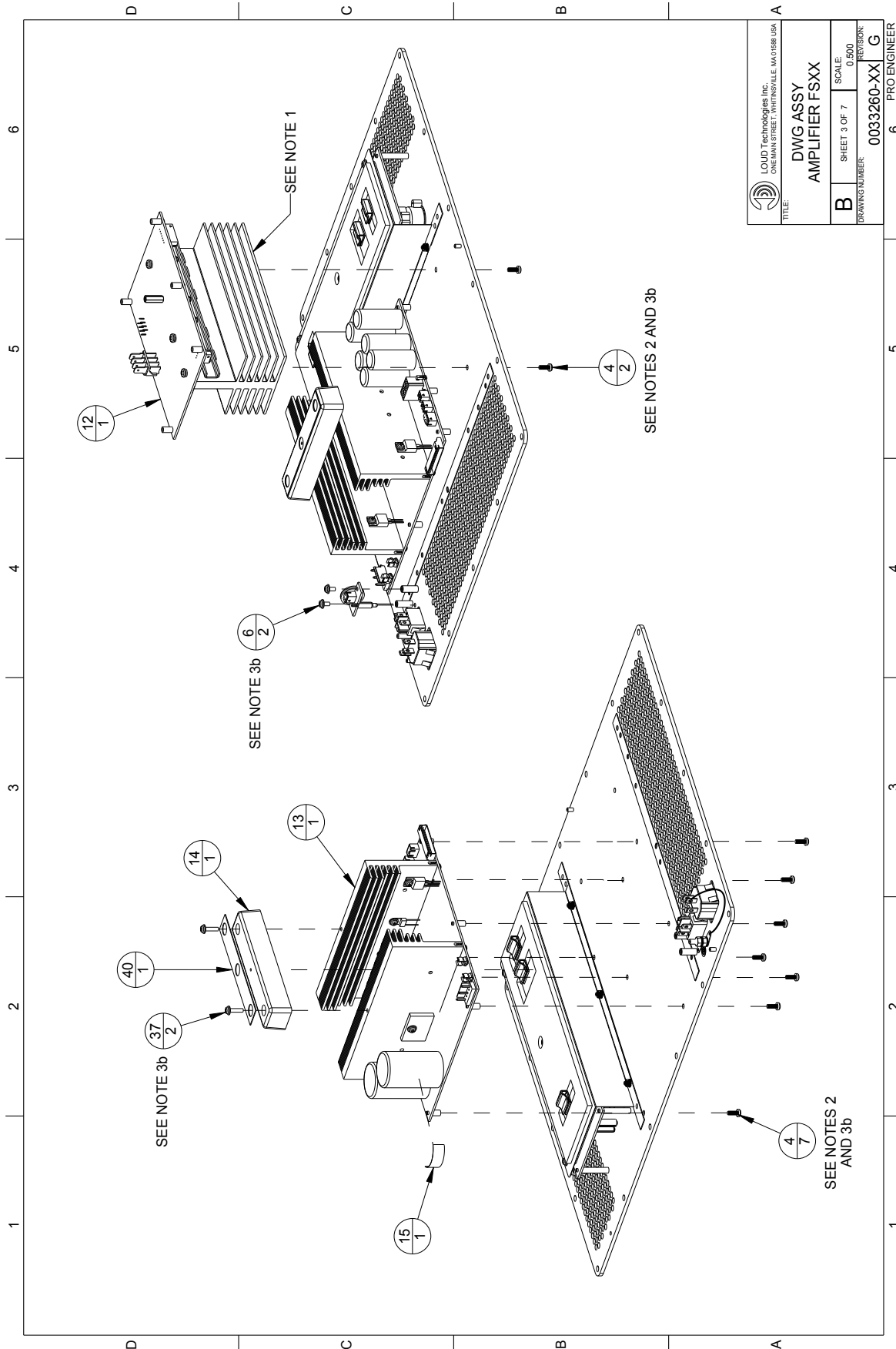


REV	DESCRIPTION
A	RELEASED TO PRODUCTION FROM DRAWING CHANGES PER ECOVHT16860 MELANIE 10/2/09
B	ADDED FAN ORIENTATION NOTES PER ECOVHT16109 12/22/09 JFD
C	ADDED FOAM PIECES, ITEMS 40 & 41; ADDED CLEANING OF SHIELD AS AN ASSEMBLY REQUIREMENT; DELETED (7) CABLE CLAMP, ITEM #38; CHANGED (7) CABLE CLAMP, ITEMS #32 & 24 PER ECOVHT16315 3/6/10 JFD
D	ITEM #69 QUANTITY OF 2 WAS 3; ADDED ADHESIVE, ITEM #42 AND ASSIGNED PARTS #43 & 44 PER ECOVHT16351 3/18/10 JFD
E	ADDED SWITCH ORIENTATION VIEW SHEET LABELS TO SHEET CH PER ECOVHT16372 3/23/10 JFD
F	SHT #6: ITEM #6 QTY OF 11 WAS 10 PER ECOVHT16860 9/2/10 JFD
G	ADDED ITEMS #43 & 44 TO SHEET 7 PER ECOVHT7912 9/15/11 JFD

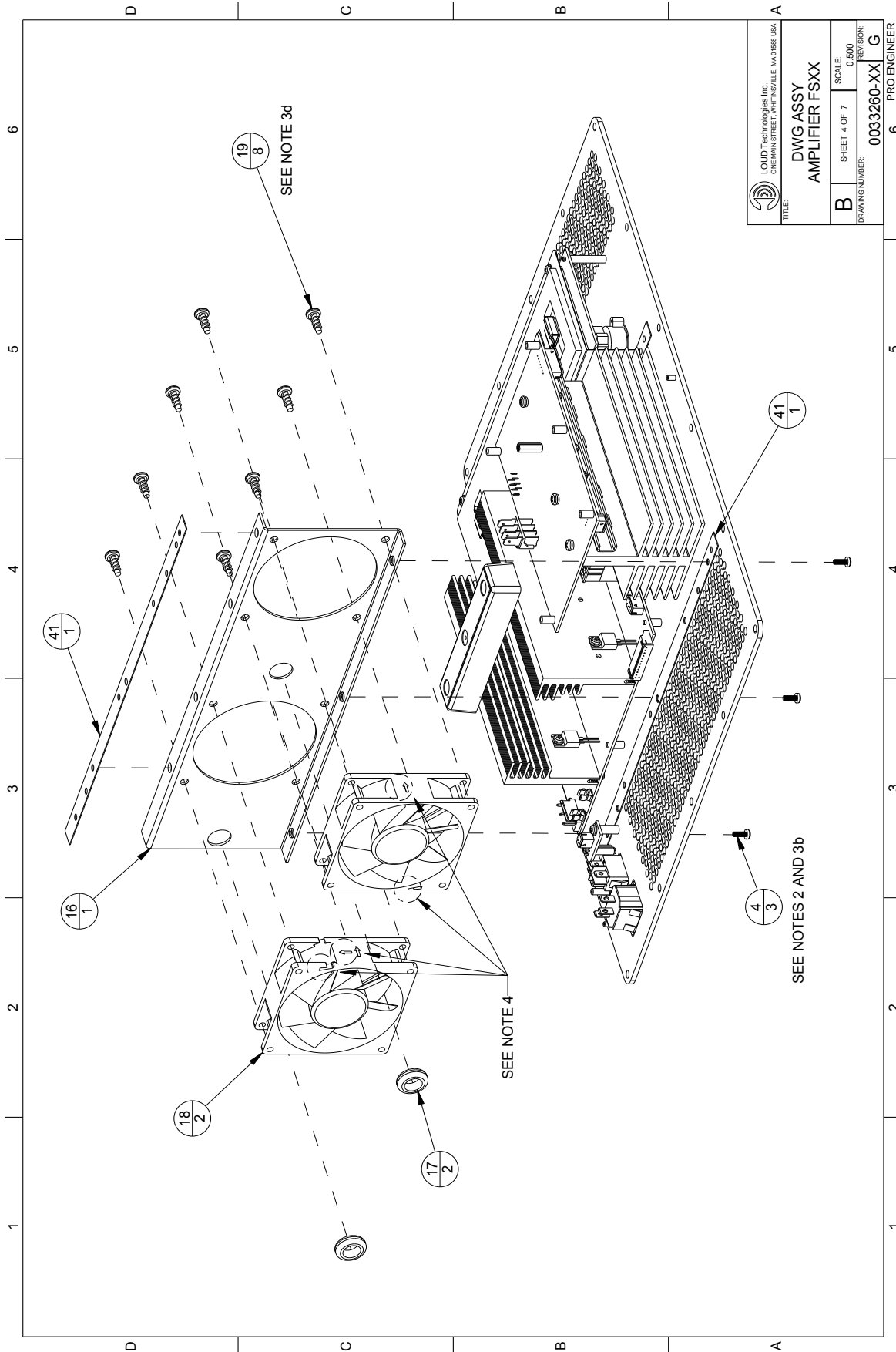
REVISION CONTROL: REVISIONS IN THIS DRAWING IDENTIFIED IN THE PRODUCTION PARTICLE MANAGEMENT SYSTEM ALL APPROVAL INFORMATION IS INFORMATION IS ELECTRONICALLY DRAWN BY: MELANIE DATE: 9/14/09	UNLESS OTHERWISE SPECIFIED: ALL DIMENSIONS ARE IN MILLIMETERS DIMENSIONS FOR REF ONLY TOLERANCE IN MILLIMETERS FRACTIONS DECIMALS ANGLES ± 1/2° (XXX) = REF DIMS NO TOLERANCE IMPLIED TSC = THEORETICAL SHARP CORNER DIMENSIONS ACROSS CENTER LINES TO BE SYMMETRICAL	LOUD Technologies Inc. ONE MAIN STREET, WHITINSVILLE, MA 01888 USA TITLE: DWG ASSY AMPLIFIER FSXX
B	SHEET 1 OF 7	SCALE: 0.380
DRAWING NUMBER: 0033260-XX		PROTECTOR: G
		6 PRO ENGINEER

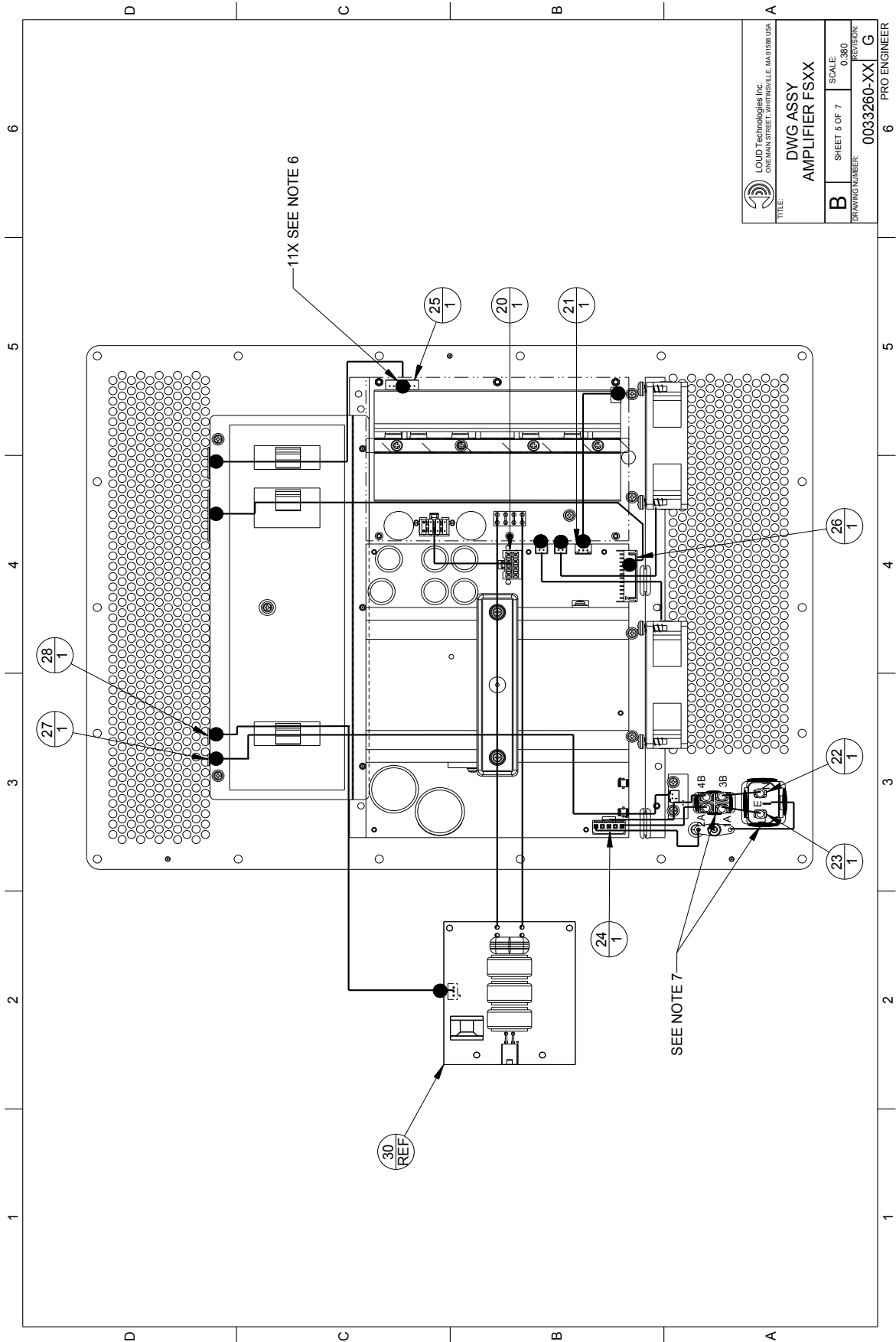


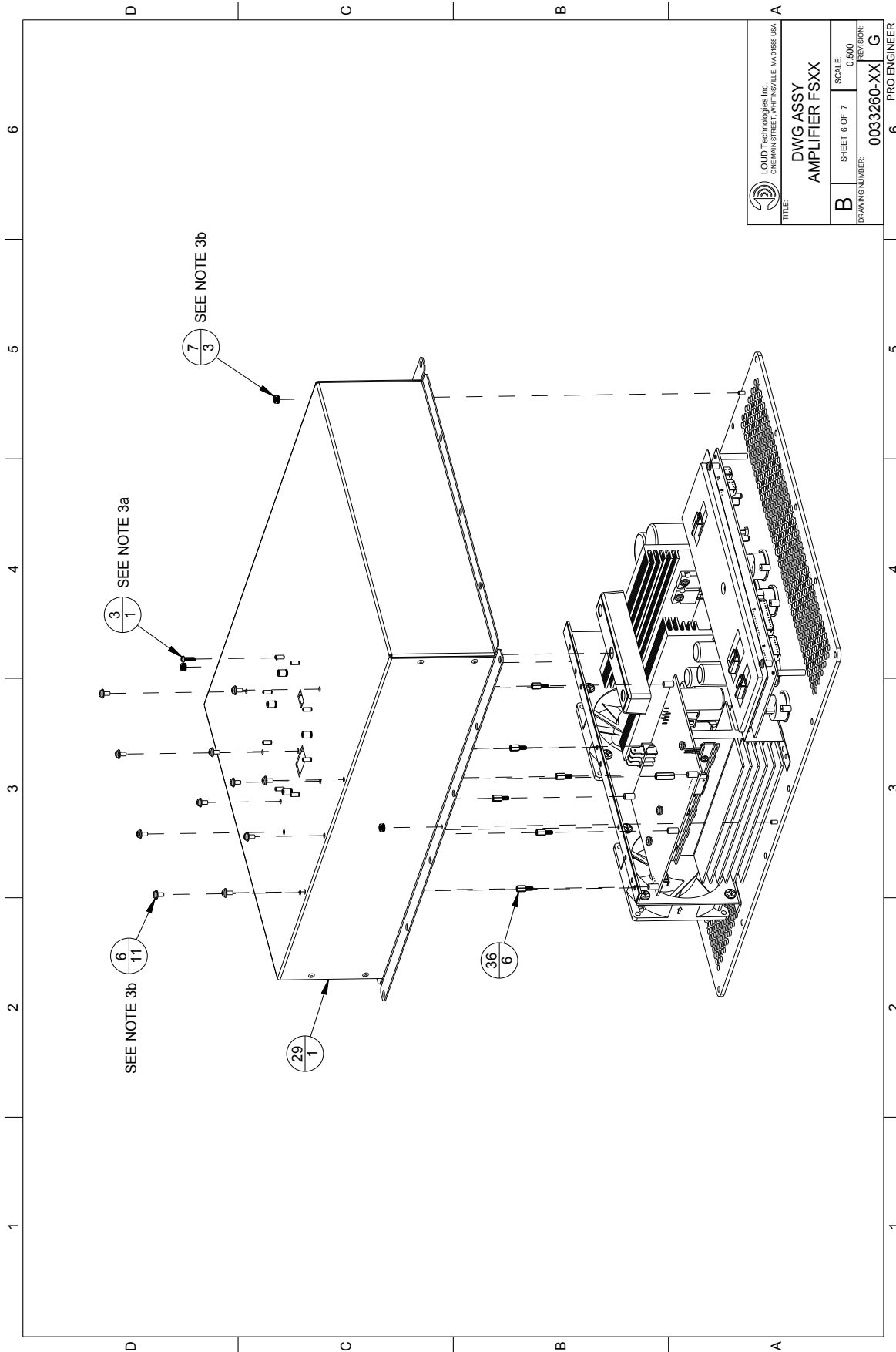
LOUD Technologies Inc. ONE MAIN STREET, WHITINSVILLE, MA 01888 USA	
TITLE: DWG ASSY AMPLIFIER FSXX	
B	SHEET 2 OF 7
SCALE: 0.380	
DRAWING NUMBER: 0033260-XX	
REVISION: G	
PRO ENGINEER 6	



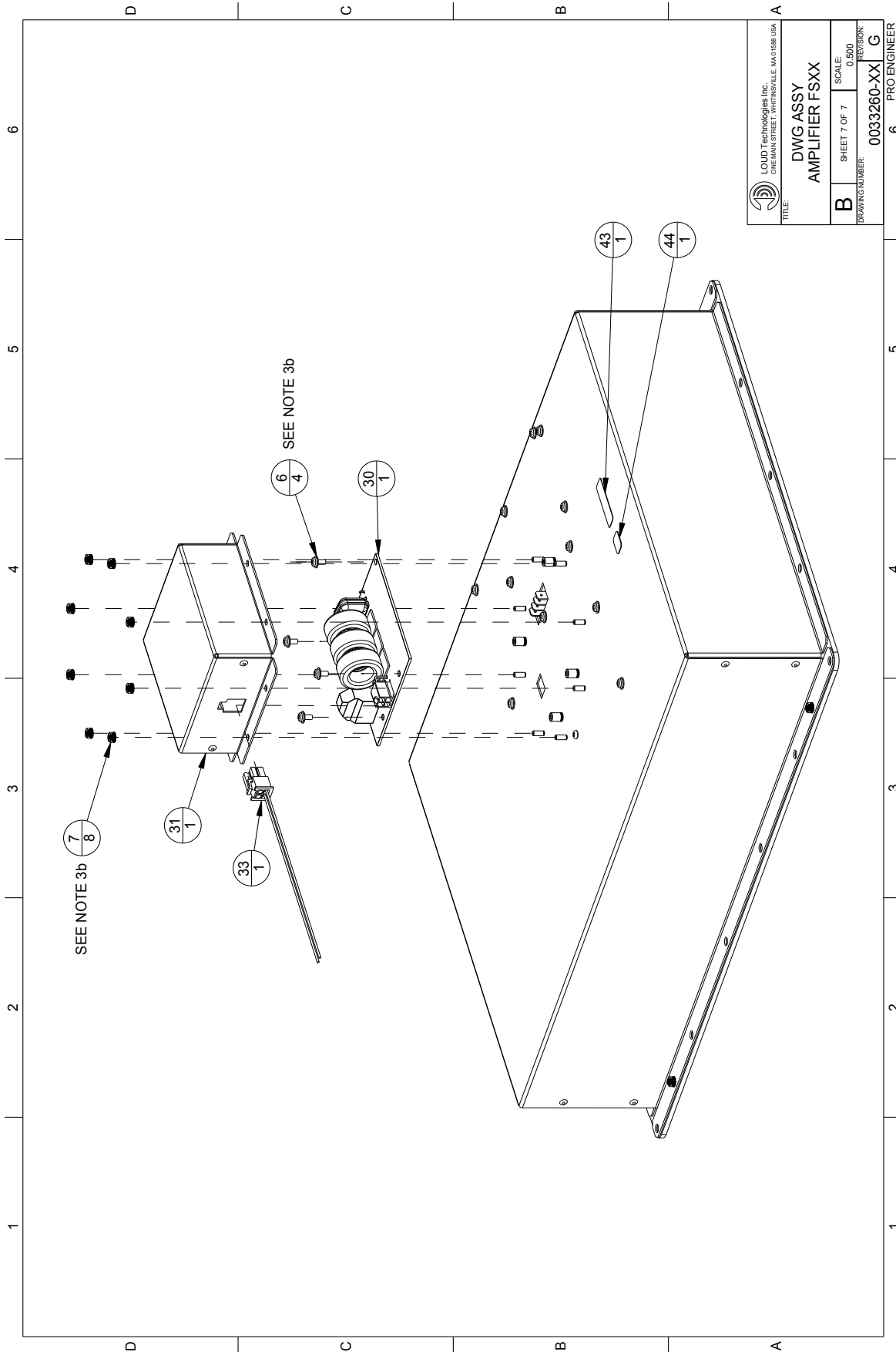
LOUD Technologies Inc. ONE MAIN STREET, WHITINSVILLE, MA 01886 USA	
TITLE: DWG ASSY AMPLIFIER FSXX	
B	SHEET 3 OF 7
SCALE: 0.500	
DRAWING NUMBER: 0033260-XX	
PROVISION: G	
6 PRO ENGINEER	







LOUD Technologies Inc. ONE MAIN STREET, WHITINSVILLE, MA 01888 USA	
TITLE: DWG ASSY AMPLIFIER FSXX	
B	SHEET 6 OF 7
SCALE: 0.500	
DRAWING NUMBER: 0033260-XX	
REVISION: G	
6 PRO ENGINEER	



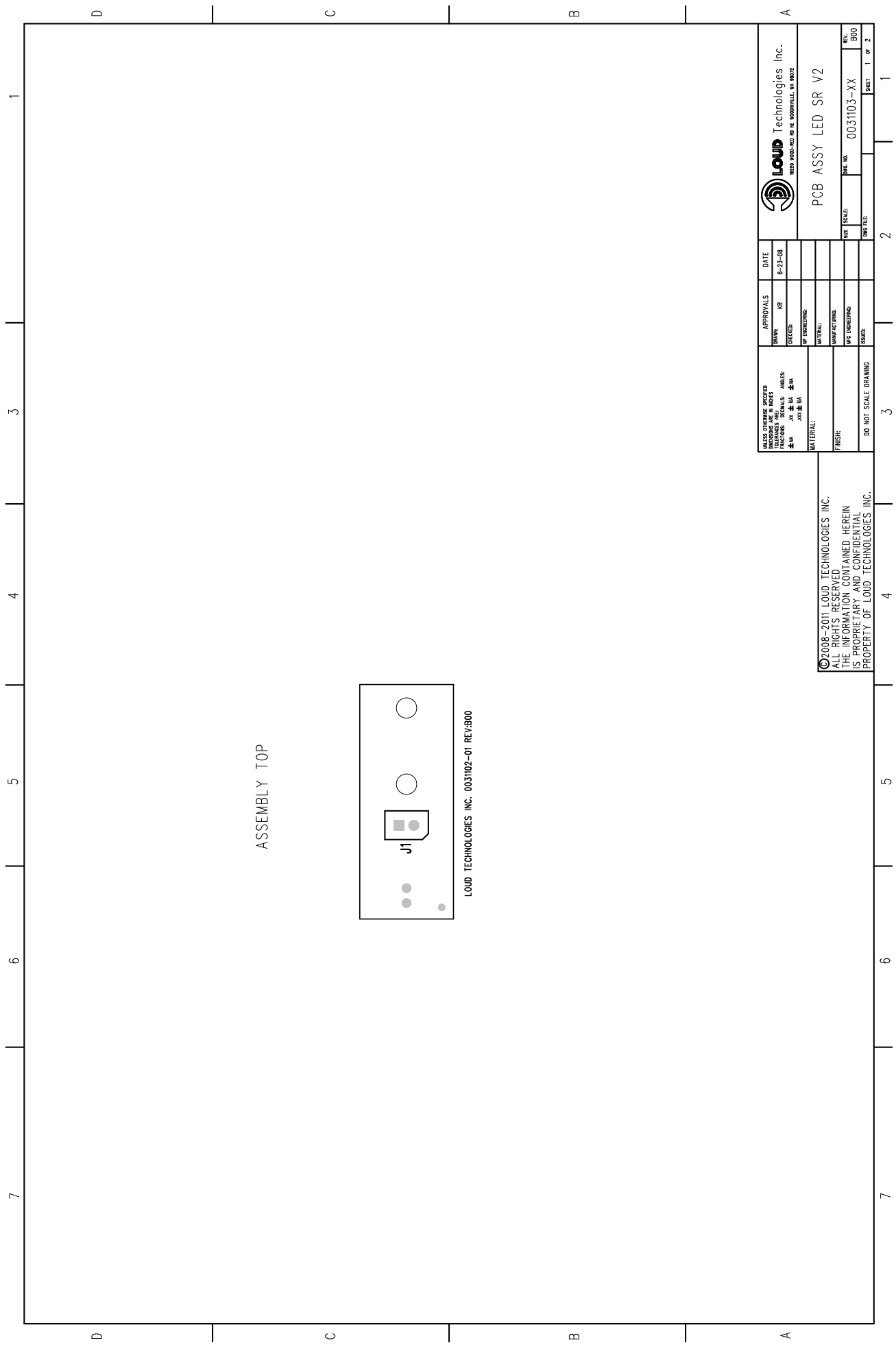
LOUD Technologies Inc. ONE MAIN STREET, WHITINSVILLE, MA 01888 USA	
TITLE: DWG ASSY AMPLIFIER FSXX	
B	SHEET 7 OF 7
SCALE: 0.500	
DRAWING NUMBER: 0033260-XX	
REVISION: G	
6 PRO ENGINEER	



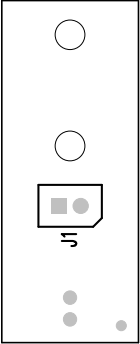
Item	Part Number	Description
1	0033231-00	PANEL AMPLIFIER MCK FS15 100-120V
2	0033371-00	PCB ASSY FS15 INPUT BOARD
3	0025442	SCR SELFTAP PLASTIC M3X10 PNH PHILLIP STL BLK ZN
4	0000623-08	SCR M3 X 8MM PAN MCH PH STL BLK
5	0033532	SHIELD INPUT AMP FSXX
6	0013717-06	SCR M3 X 0.5 X 6MM PAN MCH SEMS ITLW PH STL BLKZC
7	0000659	NUT HEX KEP M3
8	840-120-00	LBL GROUND SYMBOL
9	0018263	SA IEC ASSY W/ 5 CM GROUND WIRE
10	0030476	SWITCH ROCKER DPST 250VAC 10A UL CSA/250VAC 8A/80A VDE
11	0010597	NUT HEX KEP M4
12	0020664-04	PCB ASSY 500W CLASS D AMP FS SPKRS
13	0027030-04	PCB ASSY POWER SUPPLY FS 120V VERSION
14	0031206	SUPPORT MOLDED HEATSINK POW SPLY - PPM MIXERS
15	0000104-00	LBL PWR 500 WATT 100-120 VOLT PWR MIXER
16	0033531	BRKT FAN AMP FSXX
17	740-009-00	GROMMET RUBBER .437ID
18	0025290	ASSY CBL FAN 2 PIN PPM
19	0025444	SCR SELFTAP PLASTIC M5X14 PNH PHILLIP STL NICKEL
20	0025291	ASSY CBL UL1015 16AWG BLK 100MM 8P 4.2MM DUAL ROW
21	0013703-020	ASSY CBL 3 PIN 2.5MM TJC3 SINGLE ROW 20 CM LEN
22	2038291	ASSY CBL 16AWG UL1015 BLU 100MM .187" QDISC
23	2038292	ASSY CBL 16AWG UL1015 BRN 100MM .187" QDISC
24	2033614	ASSY CBL PS TO ON/OFF FS
25	0013707-018	ASSY CBL 7 PIN 2.5MM TJC3 SINGLE ROW 18 CM LEN



Item	Part Number	Description
26	0013712-034	ASSY CBL 12 PIN 2.5MM TJC3 SINGLE ROW 34 CM LEN
27	0013702-036	ASSY CBL 2 PIN 2.5MM TJC3 SINGLE ROW 36 CM LEN
28	0013703-025	ASSY CBL 3 PIN 2.5MM TJC3 SINGLE ROW 25 CM LEN
29	0033237	SHIELD AMPLIFIER FSXX
30	0033474-00	PCB ASSY FS OUTPUT FILTER
31	0033472	SHIELD OUTPUT FSXX
32	0008174-05	KNOB LG ANALOG WHITE 100
33	0033432	ASSY CBL SPEAKER AND FRONT LED FS
34	730-025-00	LOCTITE 222
35	730-001-00	THERMAL COMPOUND
36	0033393	STDF HEX M/F M3 X 7MM BRASS
37	0013717-12	SCR M3 X 0.5 X 12MM PAN MCH SEMS ITLW PH STL BLKZC
38	0010827	FLAT CABLE CLAMP - ADHESIVE BACK - 15mm x 13.3mm
39	2034701	FOAM SHIELD INPUT FS
40	2035127	GASKET SUPPORT PS AMP FS
41	2035128	GASKET SHIELD/FAN AMP FS
42	0008619	HOT MELT/EVA POLYSHOT 1X/BOX 35LBS
43	0032856	LBL SERIAL NUMBER GENERIC 35mm X 9.5mm UL
44	0033468	LBL REVISION GENERIC 13mm X 9.5mm

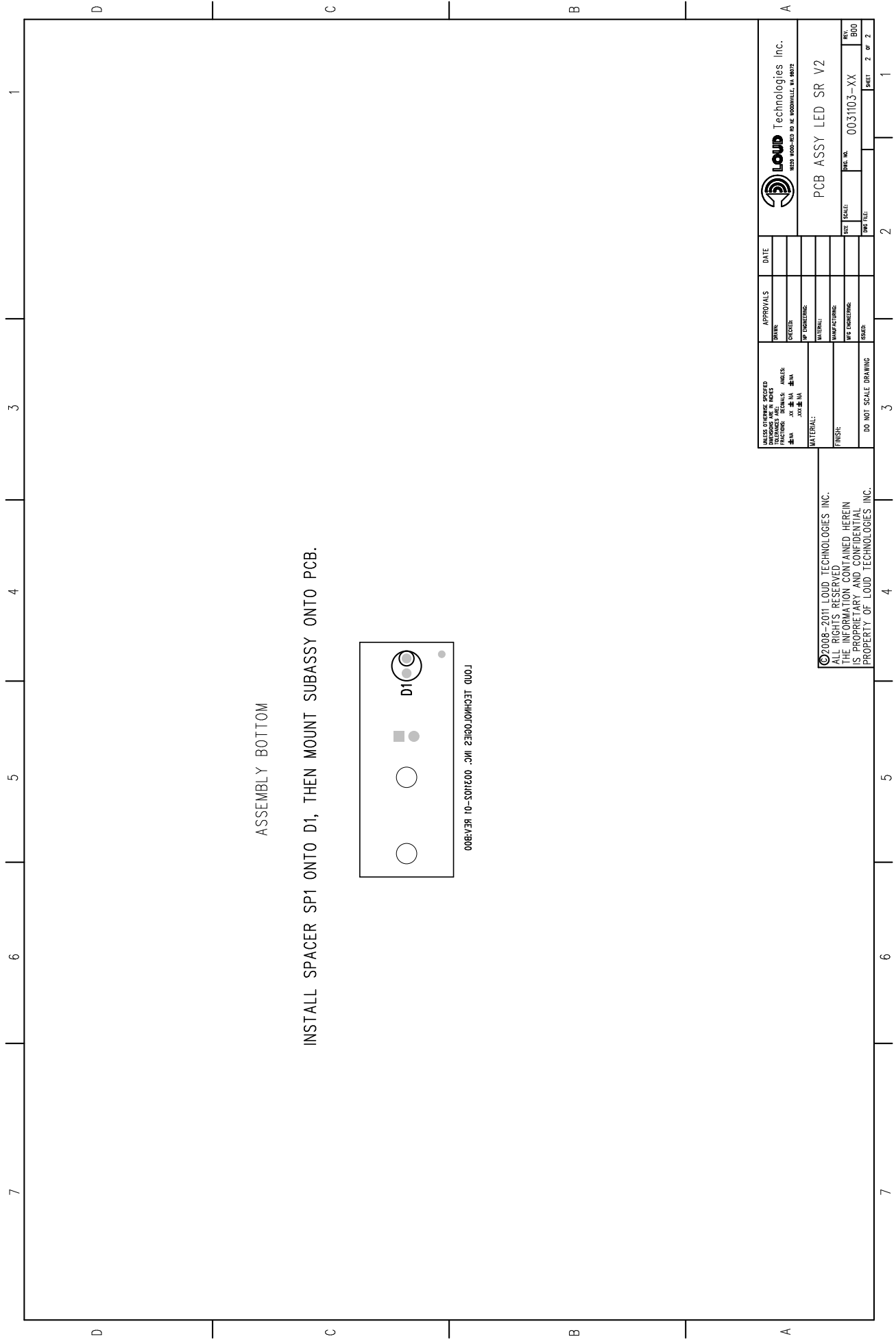


ASSEMBLY TOP



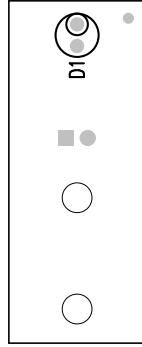
LOUD TECHNOLOGIES INC. 003102-01 REV:B00

UNLESS OTHERWISE SPECIFIED DIMENSIONS ARE IN MILLIMETERS 毫米 英寸 1:1 1:1		APPROVALS DRAWN: KR CHECKER: KR DATE: 6-23-08	LLOUD Technologies Inc. 1103 1000 RD W. WOODVILLE, MA 01072
MATERIAL: FINISH:		MANUFACTURING: DATE DIMENSIONING: ISSUED:	PCB ASSY LED SR V2 SIZE: 003103-XX SHEET: 1 OF 2
©2008-2011 LOUD TECHNOLOGIES INC. ALL RIGHTS RESERVED. THE INFORMATION CONTAINED HEREIN IS PROPRIETARY AND CONFIDENTIAL PROPERTY OF LOUD TECHNOLOGIES INC.		DO NOT SCALE DRAWING	



ASSEMBLY BOTTOM

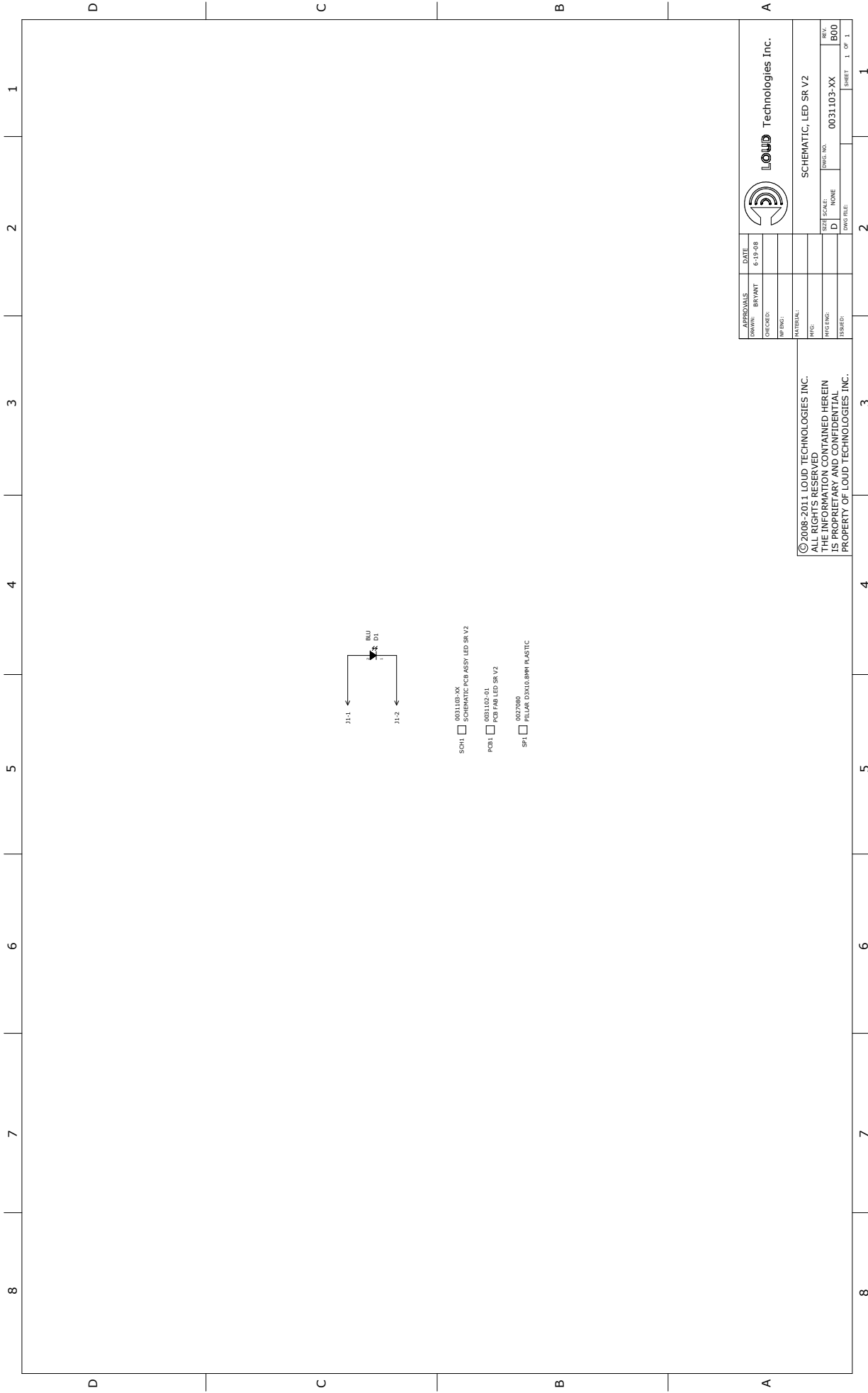
INSTALL SPACER SP1 ONTO D1, THEN MOUNT SUBASSY ONTO PCB.



00EVR 10-S01E00 .JMI 23100.00H0ZT 000J

UNLESS OTHERWISE SPECIFIED TOLERANCES ARE: DIMS: .015 IN HOLE DIA: .001 IN DIA: .001 IN ANGLES: .001 IN FIN: .001 IN	APPROVALS DRAWN: _____ CHECKED: _____ IN CHARGE: _____ MATERIAL: _____ MANUFACTURING: _____ WTE DIMENSIONS: _____ ISSUED: _____	DATE _____	LLOUD Technologies Inc. 1035 1000-103 RD W. WOODVILLE, MA 01072
	WATER: _____ FINISH: _____ DO NOT SCALE DRAWING	PCB ASSY LED SR V2 SIZE: _____ SHEET: 2 OF 2	

©2008-2011 LOUD TECHNOLOGIES INC.
 ALL RIGHTS RESERVED.
 THE INFORMATION CONTAINED HEREIN
 IS PROPRIETARY AND CONFIDENTIAL
 PROPERTY OF LOUD TECHNOLOGIES INC.



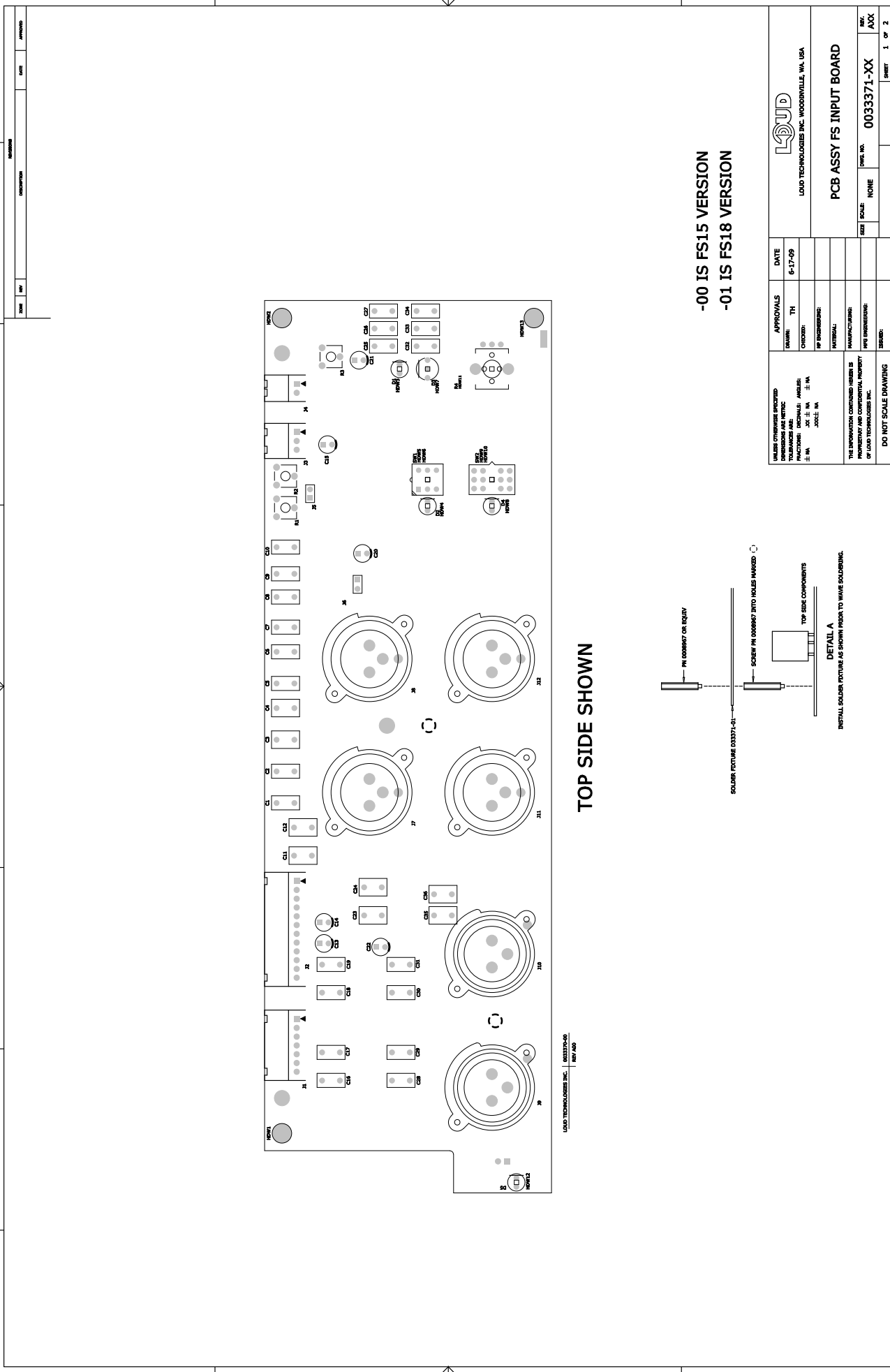
- SCH 0031103-XX SCHEMATIC PCB ASSY LED SR V2
- PCB1 0031103-01 PCB FAB LED SR V2
- SPI 0027080 PILLAR DIM10.8MM PLASTIC

APPROVALS		DATE
DRAWN:	BRYANT	6-19-08
CHECKED:		
IN ENG:		
MATERIAL:		
MFG:		
PHYS ENG:		
ISSUED:		

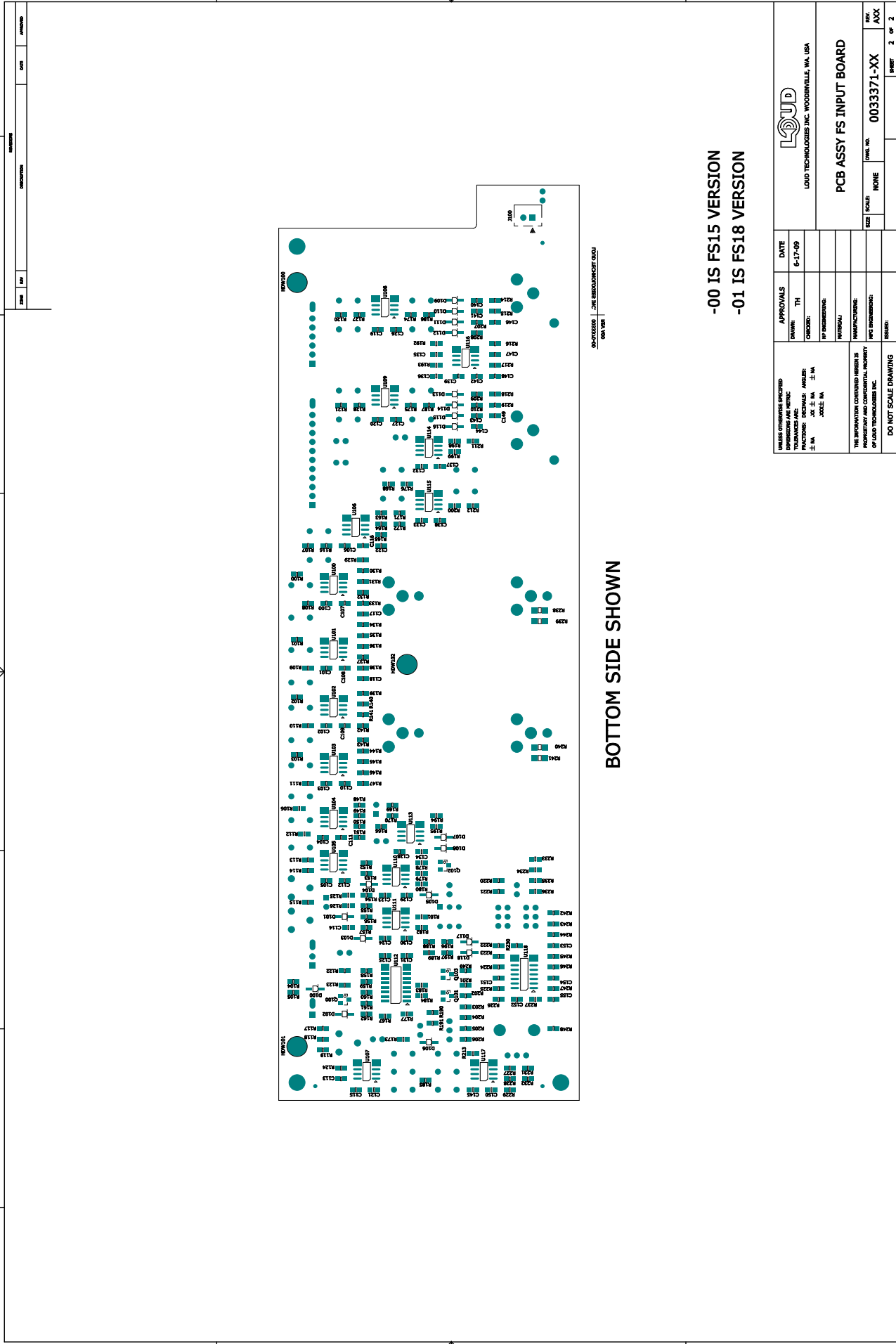
© 2008-2011 LOUD TECHNOLOGIES INC.
 ALL RIGHTS RESERVED.
 THE INFORMATION CONTAINED HEREIN
 IS PROPRIETARY AND CONFIDENTIAL
 PROPERTY OF LOUD TECHNOLOGIES INC.

LOUD Technologies Inc.	
SCHEMATIC, LED SR V2	
SIZE:	D
SCALE:	NONE
DWG NO:	0031103-XX
REV:	B00
SHEET 1 OF 1	

1 2 3 4 5 6 7 8



1 2 3 4 5 6 7 8



BOTTOM SIDE SHOWN

-00 IS FS15 VERSION
-01 IS FS18 VERSION

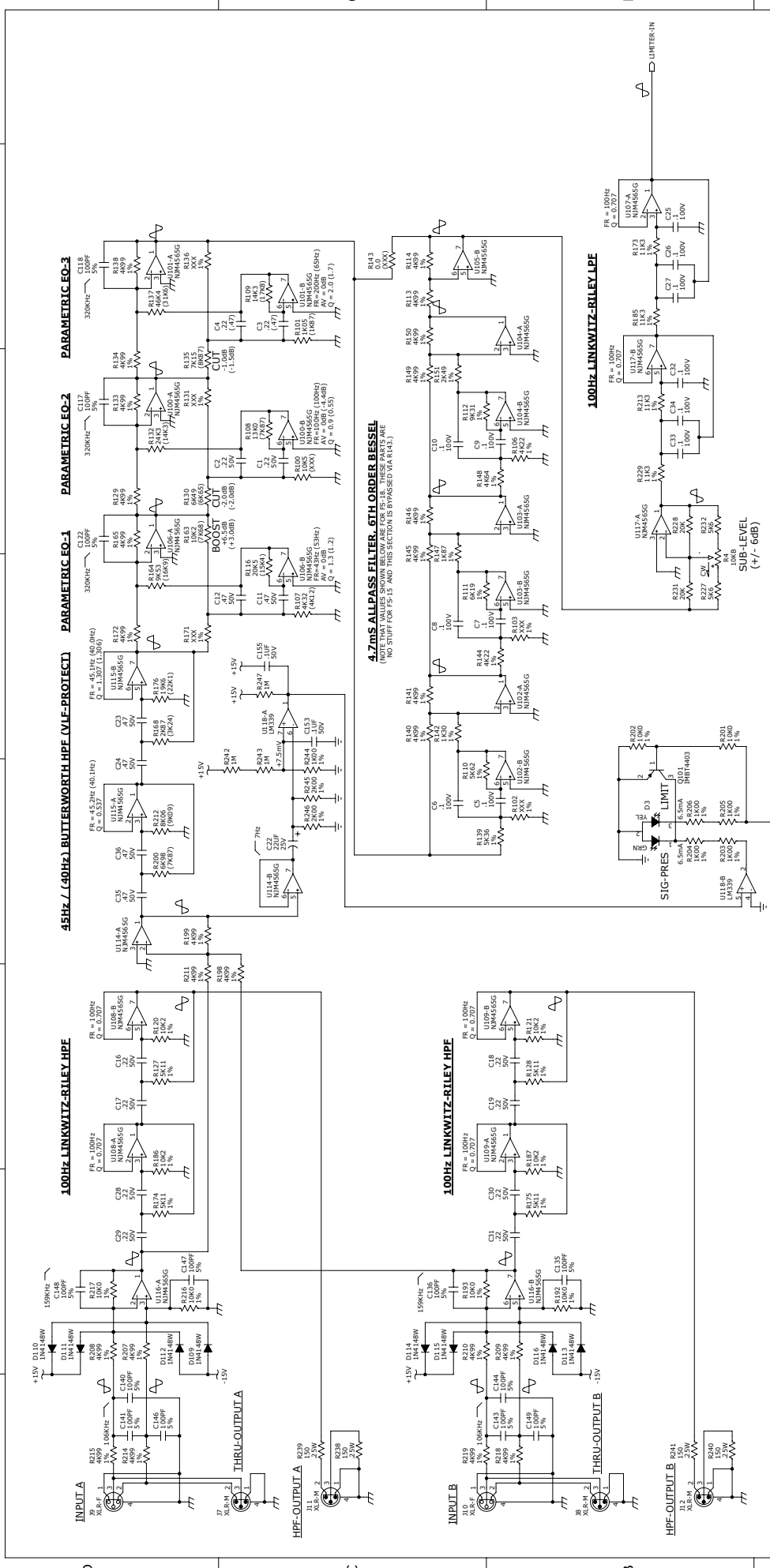
DATE: 06/17/09
DRAWN: TH

RELEASE OF THIS DRAWING CONSTITUTES ACCEPTANCE OF THE INFORMATION CONTAINED HEREIN. THE INFORMATION CONTAINED HEREIN IS PROPRIETARY AND CONFIDENTIAL PROPERTY OF LUD TECHNOLOGIES INC.		APPROVALS: DATE: 6-17-09	
THE INFORMATION CONTAINED HEREIN IS PROPRIETARY AND CONFIDENTIAL PROPERTY OF LUD TECHNOLOGIES INC.		CHECKED: BY:	
DO NOT SCALE DRAWING		MATERIAL:	
MANUFACTURING:		SCALE: NONE	
PART NUMBER:		INCL. NO. 0033371-XX	
SERIAL:		REV. AXX	
SHEET 2 OF 2		1	

0033371-XX SCHEMATIC FS INPUT BOARD (I/O_AND_EQ)

HD1501 SERVICE MANUAL

1 2 3 4 5 6 7 8



NOTE: VALUES SHOWN IN () ARE ALTERNATE VALUES USED IN FS-1.8 PRODUCT. PCB ASSY FS-1.8 INPUT BOARD: 0033371-00. PCB ASSY FS-1.8 INPUT BOARD: 0033371-01.

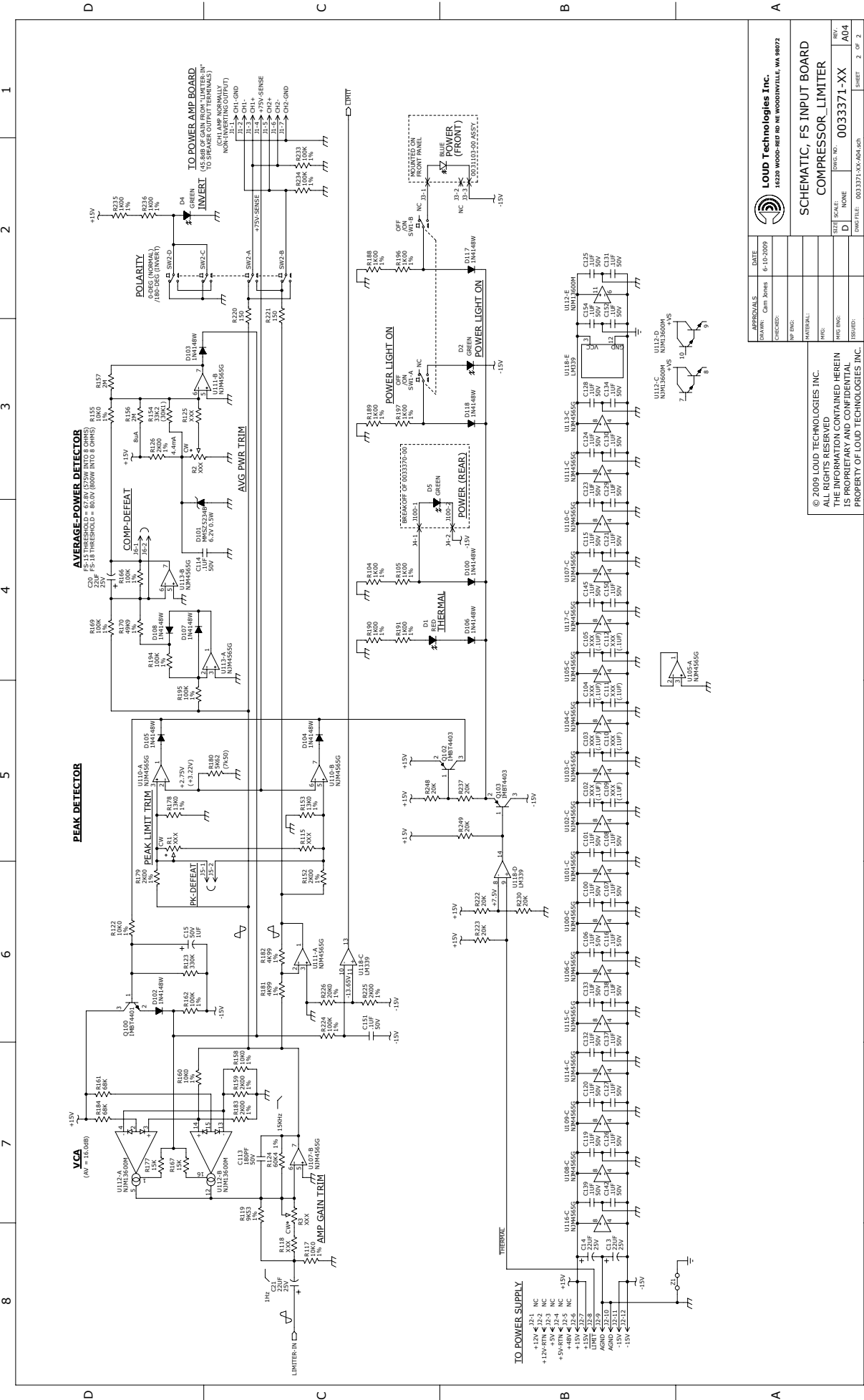
APPROVALS	DATE
DESIGNED: Cam Jones	6-10-2009
CHECKED:	
DATE:	
APPROVED:	

LOUD Technologies Inc. 1420 WOOD-BEER RD NE WOODSVILLE, VA 24092	
SCHEMATIC, FS INPUT BOARD	
I/O_AND_EQ	
REV.:	A04
SIZE:	D
SCALE:	NONE
DATE:	6-10-2009
FILE:	0033371-XX-A04.45h
SHEET:	1 OF 2

© 2009 LOUD TECHNOLOGIES INC.
ALL RIGHTS RESERVED
THE INFORMATION CONTAINED HEREIN IS PROPRIETARY AND CONFIDENTIAL
PROPERTY OF LOUD TECHNOLOGIES INC.

0033371-XX SCHEMATIC FS INPUT BOARD
(COMPRESSOR_LIMITER)

HD1501 SERVICE MANUAL



APPROVALS:	DATE:
DRAWN: Cam Jones	6-10-2009
CHECKED:	
BY ENG:	
MATERIAL:	
WFO:	
REV ENG:	
ISSUED:	

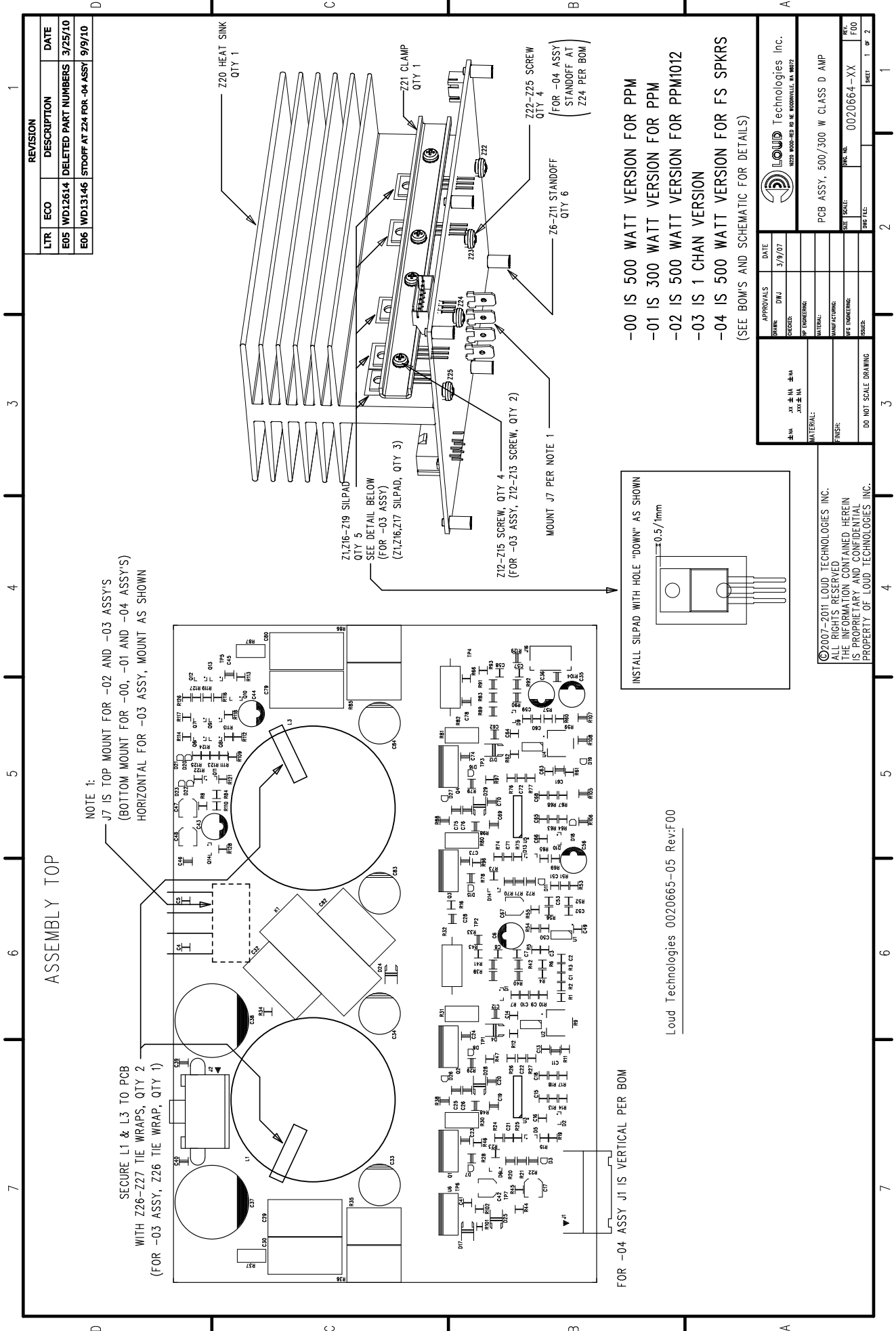
© 2009 LOUD TECHNOLOGIES INC.
ALL RIGHTS RESERVED.
THE INFORMATION CONTAINED HEREIN
IS PROPRIETARY AND CONFIDENTIAL.
PROPERTY OF LOUD TECHNOLOGIES INC.

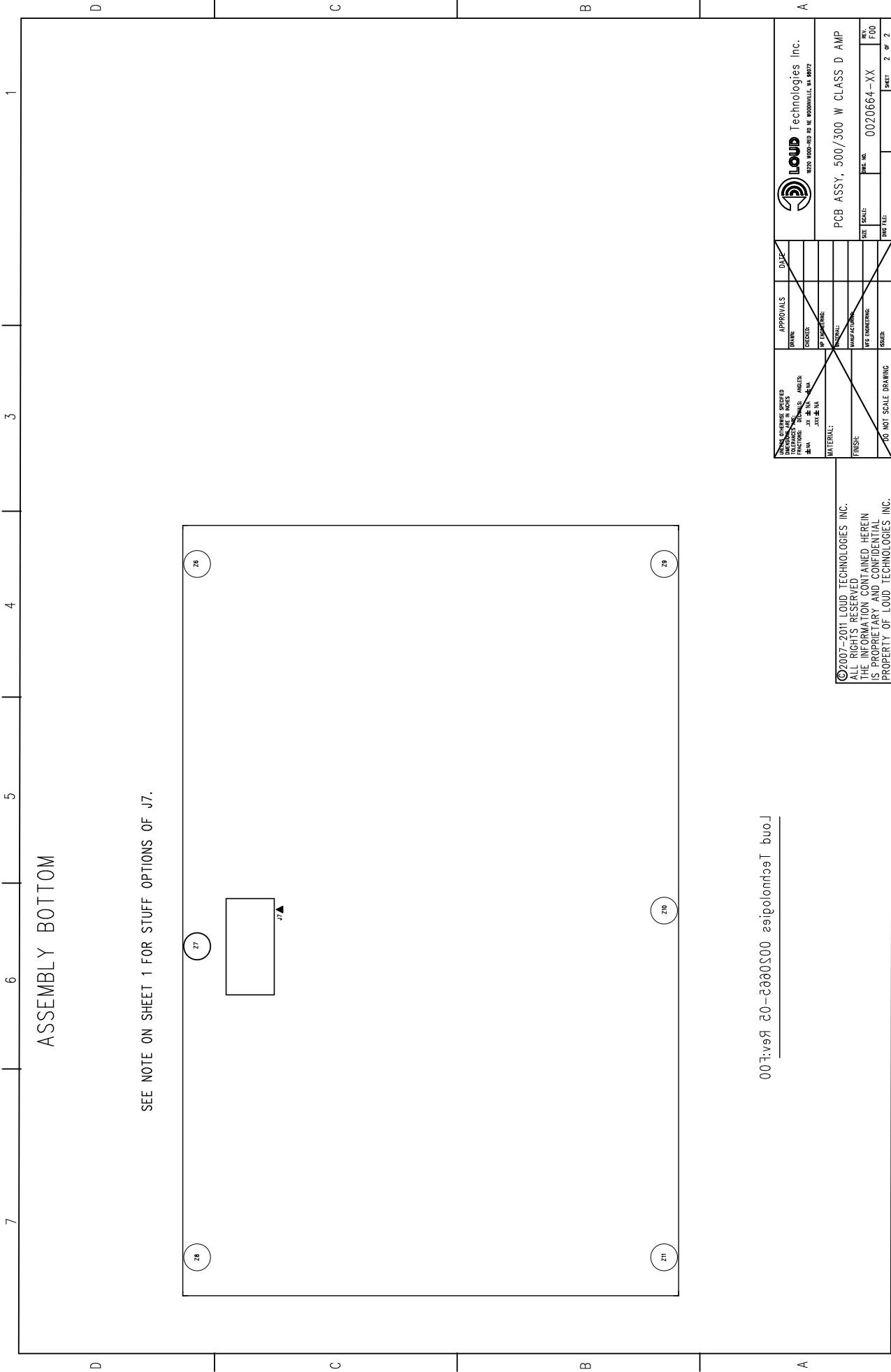
LOUD Technologies Inc.
16210 WOOD-RED RD NE WOODINVILLE, WA 98072

SCHEMATIC, FS INPUT BOARD
COMPRESSOR_LIMITER

SIZE: SCALE: 0033371-XX
D NONE
REV: A04

DWG FILE: 0033371-XX-004-020
SHEET 2 OF 2

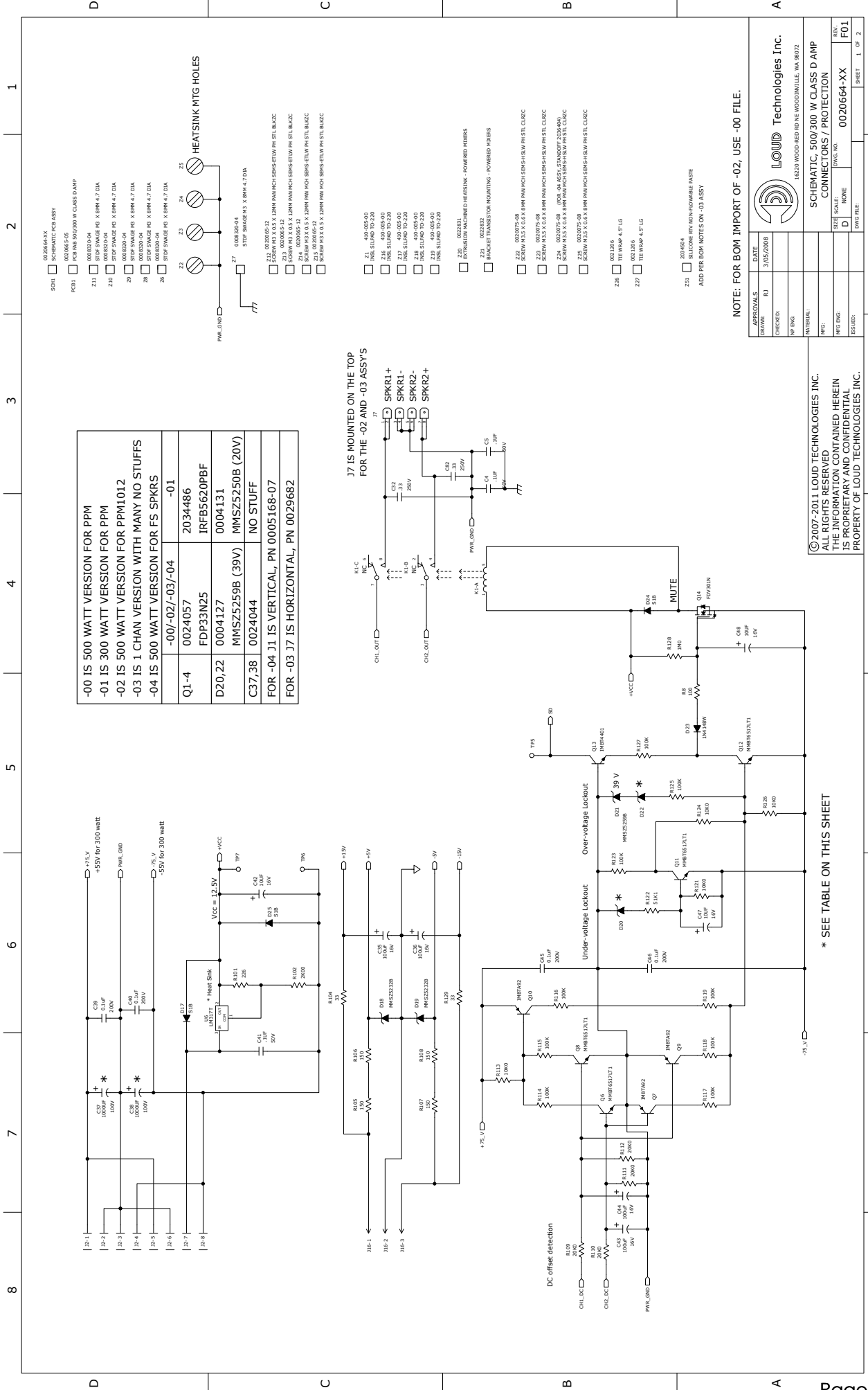




0020664-XX Rev. E.00

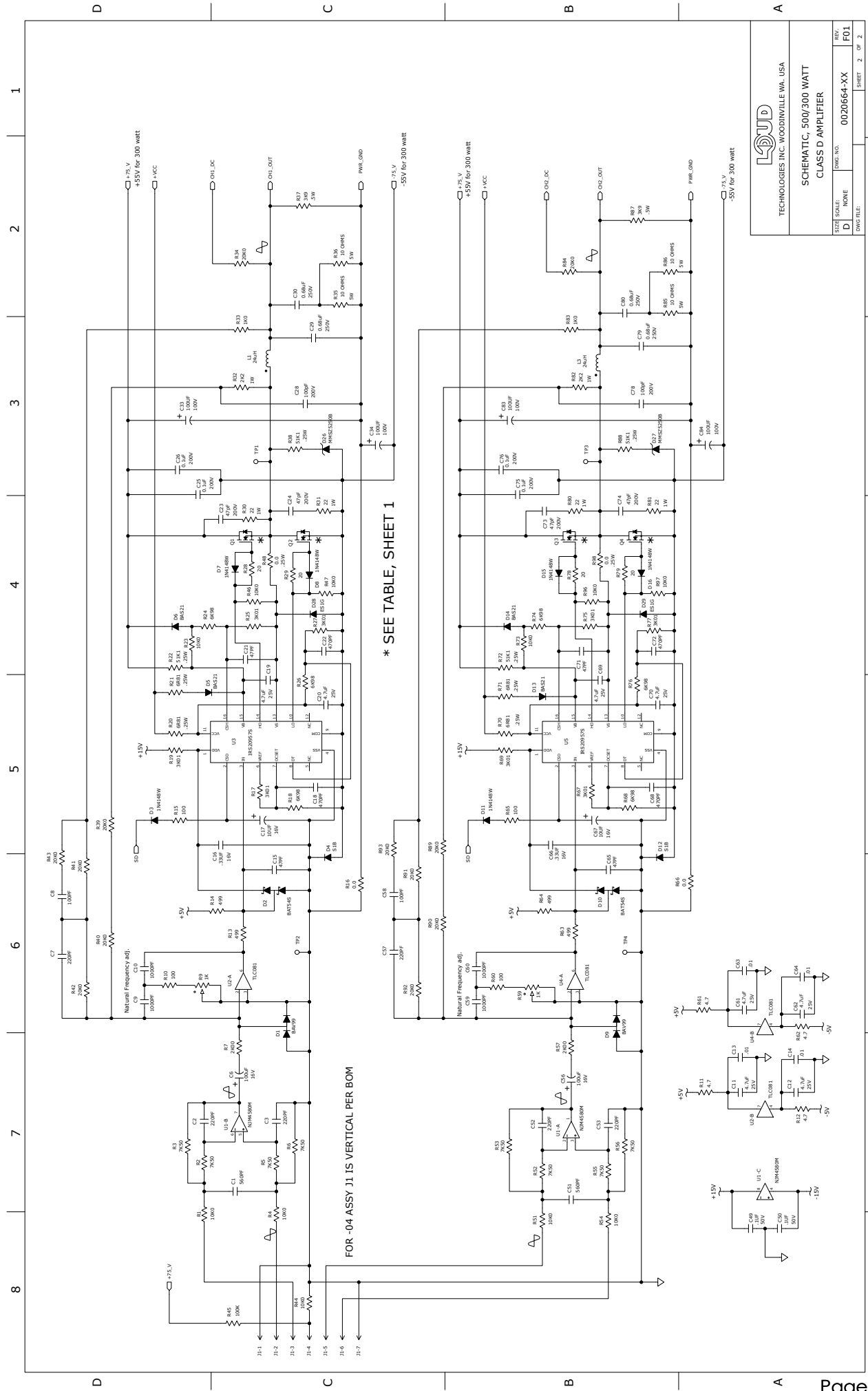
THIS DRAWING SHOULD BE USED AS A GUIDE ONLY. DIMENSIONS ARE IN INCHES. FRACTIONS: 1/16, 1/8, 1/4, 3/8, 1/2, 5/8, 3/4, 7/8, 1.0. DECIMALS: .0005, .001, .002, .005, .01, .02, .05, .1, .2, .5, 1.0.	APPROVALS DESIGNED BY: _____ CHECKED BY: _____ DATE: _____ DRAWN BY: _____ DATE: _____ MANUFACTURING: _____ DATE: _____ SOLDER: _____	DATE: _____ DRAWN BY: _____ DATE: _____ MANUFACTURING: _____ DATE: _____ SOLDER: _____	LLOUD Technologies Inc. 1020 1000-RED RD NE BOONVILLE, W. 06072

©2007-2011 LOUD TECHNOLOGIES INC.
 ALL RIGHTS RESERVED
 THE INFORMATION CONTAINED HEREIN
 IS PROPRIETARY AND CONFIDENTIAL
 PROPERTY OF LOUD TECHNOLOGIES INC.



0020664-XX SCHEMATIC 500/300 W CLASS D AMP
(CLASS D AMPLIFIER)

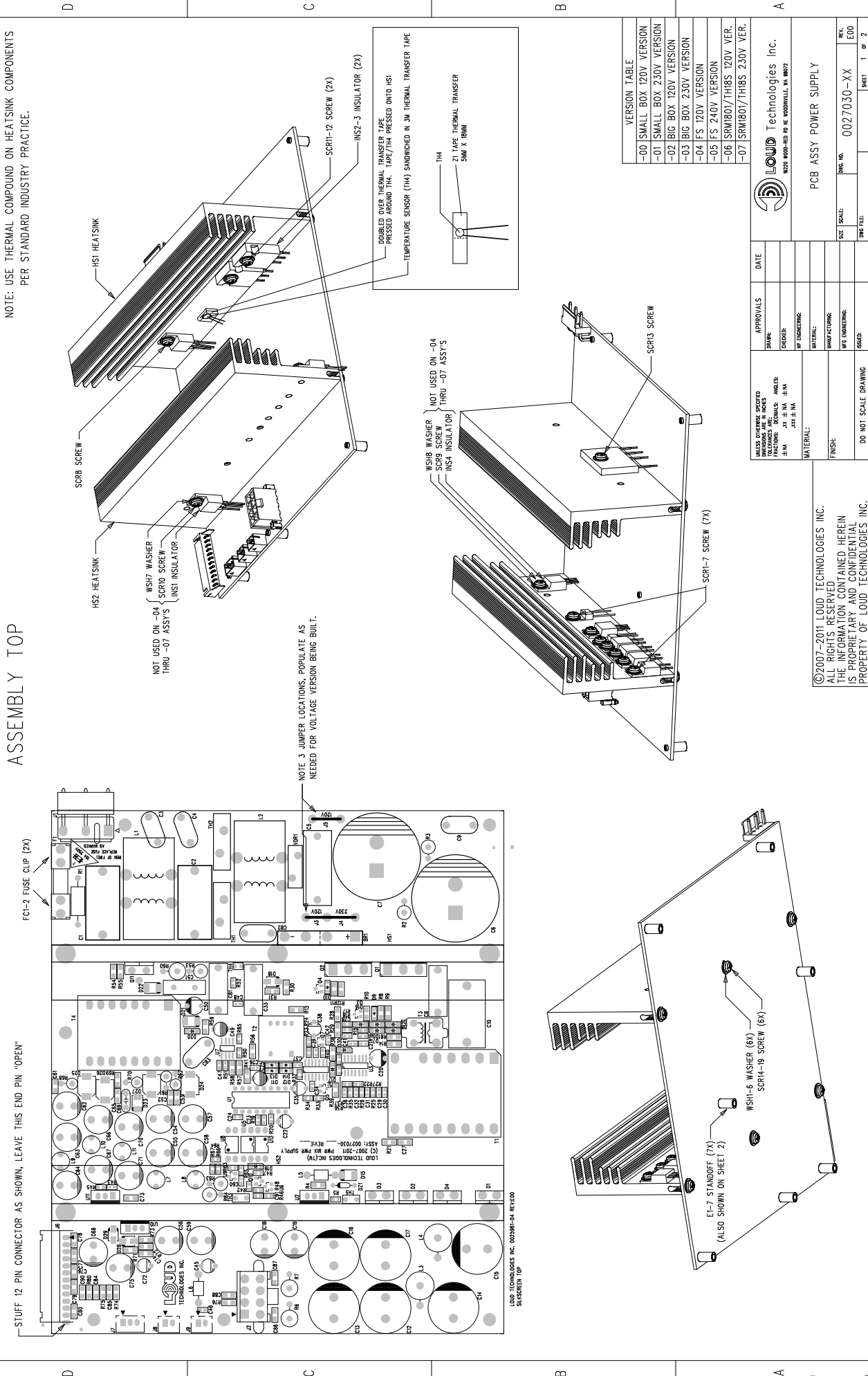
HD1501 SERVICE MANUAL



TECHNOLOGIES INC. WOODINVILLE WA, USA	
SCHEMATIC 500/300 WATT CLASS D AMPLIFIER	
SIZE: D	SCALE: NONE
DWG. NO.: 0020664-XX	REV.: F01
SHEET: 2	OF: 2

ASSEMBLY TOP

NOTE: USE THERMAL COMPOUND ON HEATSINK COMPONENTS PER STANDARD INDUSTRY PRACTICE.



©2007-2011 LOUD TECHNOLOGIES INC. ALL RIGHTS RESERVED. THE INFORMATION CONTAINED HEREIN IS PROPRIETARY AND CONFIDENTIAL. PROPERTY OF LOUD TECHNOLOGIES INC.

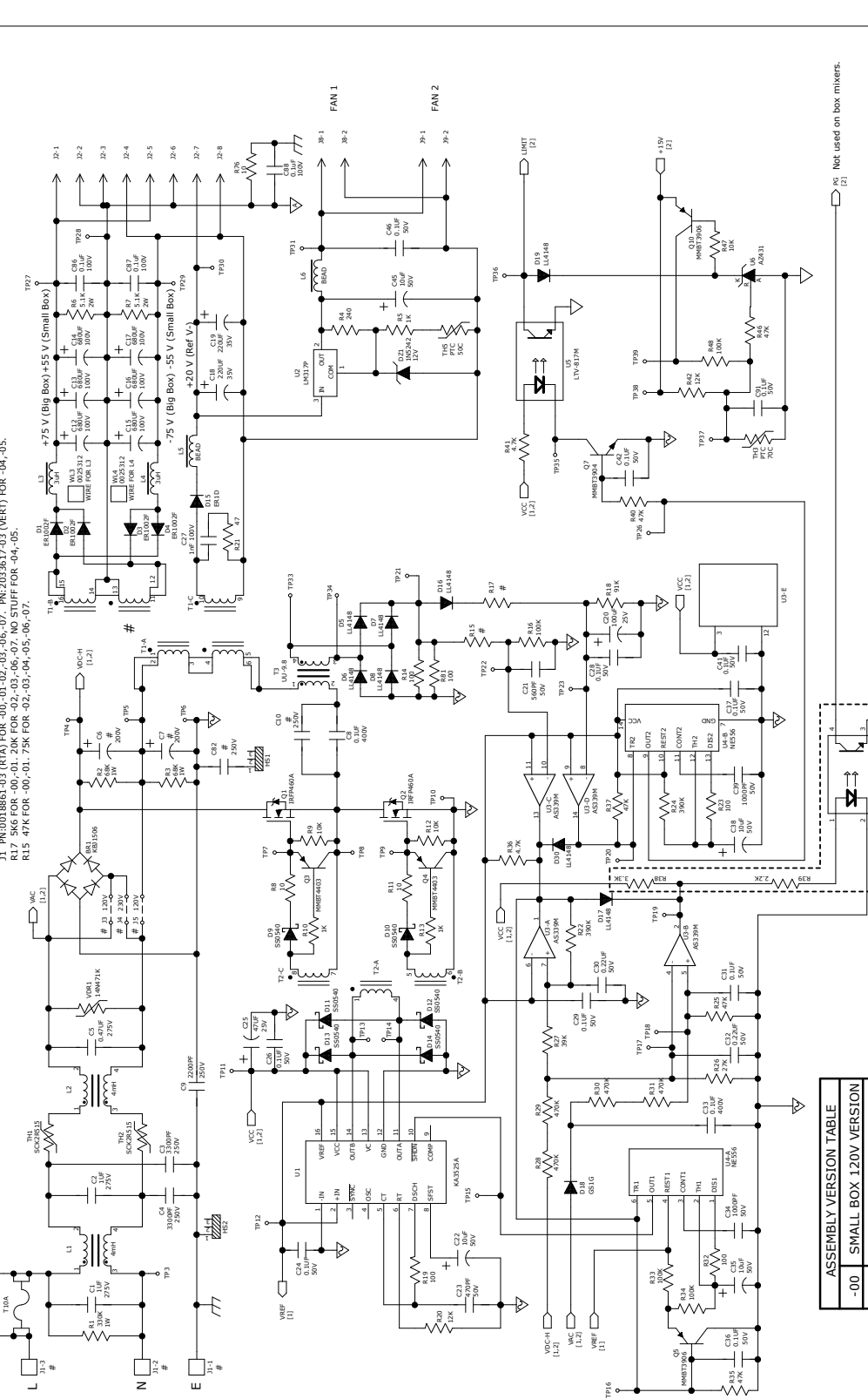
UNLESS OTHERWISE SPECIFIED, DIMENSIONS ARE IN INCHES.	DATE	APPROVALS
INCHES: 1/16, 1/8, 3/16, 1/2, 5/8, 3/4, 7/8, 1	DATE	DATE
MILLIMETERS: 4, 6, 8, 10, 12, 15, 18, 20, 25, 30, 35, 40, 45, 50, 55, 60, 65, 70, 75, 80, 85, 90, 95, 100	DATE	DATE
FINISH: .0005	DATE	DATE
DO NOT SCALE DRAWING	DATE	DATE
MATERIAL:	DATE	DATE
MANUFACTURING:	DATE	DATE
INSPECTION:	DATE	DATE
SIZE SCALE:	DATE	DATE
DWG NO.:	DATE	DATE
REV.:	DATE	DATE
0027030-XX	DATE	DATE
E00	DATE	DATE
1 OF 2	DATE	DATE



6 5 4 3 2 1

NOTES
 C6, C7 1500µF FOR -00, -01. 2200µF FOR -02, -03, -04, -05, -06, -07.
 C10 0.47µF FOR -00, -01. 0.68µF FOR -02, -03, -04, -05, -06, -07.
 C12 220µF FOR -00, -01, -02, -03. 330µF FOR -04, -05, -06, -07.
 C14 220µF FOR -00, -01, -02, -03, -04, -05, -06, -07.
 C23 470µF FOR -00, -01, -02, -03, -04, -05, -06, -07.
 C32 100µF FOR -00, -01, -02, -03, -04, -05, -06, -07.
 C33 100µF FOR -00, -01, -02, -03, -04, -05, -06, -07.
 C34 NO STUFF FOR -00, -02, -04, -06.
 J1 PN0018861-03 (RTA) FOR -00, -01, -02, -03, -06, -07. PN2033617-03 (VERT) FOR -04, -05.
 R17 5K6 FOR -00, -01. 20K FOR -02, -03, -06, -07. NO STUFF FOR -04, -05.
 R15 47K FOR -00, -01. 75K FOR -02, -03, -04, -05, -06, -07.

HARDWARE
 * DENOTES PARTS NOT USED ON -04, -05, -06, -07.
 S0K1 SCREW M4X10
 S0K2 SCREW M4X10
 S0K3 SCREW M4X10
 S0K4 SCREW M4X10
 S0K5 SCREW M4X10
 S0K6 SCREW M4X10
 S0K7 SCREW M4X10
 S0K8 SCREW M4X10
 S0K9 SCREW M4X10
 S0K10 SCREW M4X10
 S0K11 SCREW M4X10
 S0K12 SCREW M4X12
 S0K13 SCREW M4X12
 S0K14 SCREW M4X12
 S0K15 SCREW M4X12
 S0K16 SCREW M4X12
 S0K17 SCREW M4X12
 S0K18 SCREW M4X12
 S0K19 SCREW M4X12
 S0K20 SCREW M4X12
 S0K21 SCREW M4X12
 S0K22 SCREW M4X12
 S0K23 SCREW M4X12
 S0K24 SCREW M4X12
 S0K25 SCREW M4X12
 S0K26 SCREW M4X12
 S0K27 SCREW M4X12
 S0K28 SCREW M4X12
 S0K29 SCREW M4X12
 S0K30 SCREW M4X12
 S0K31 SCREW M4X12
 S0K32 SCREW M4X12
 S0K33 SCREW M4X12
 S0K34 SCREW M4X12
 S0K35 SCREW M4X12
 S0K36 SCREW M4X12
 S0K37 SCREW M4X12
 S0K38 SCREW M4X12
 S0K39 SCREW M4X12
 S0K40 SCREW M4X12
 S0K41 SCREW M4X12
 S0K42 SCREW M4X12
 S0K43 SCREW M4X12
 S0K44 SCREW M4X12
 S0K45 SCREW M4X12
 S0K46 SCREW M4X12
 S0K47 SCREW M4X12
 S0K48 SCREW M4X12
 S0K49 SCREW M4X12
 S0K50 SCREW M4X12
 S0K51 SCREW M4X12
 S0K52 SCREW M4X12
 S0K53 SCREW M4X12
 S0K54 SCREW M4X12
 S0K55 SCREW M4X12
 S0K56 SCREW M4X12
 S0K57 SCREW M4X12
 S0K58 SCREW M4X12
 S0K59 SCREW M4X12
 S0K60 SCREW M4X12
 S0K61 SCREW M4X12
 S0K62 SCREW M4X12
 S0K63 SCREW M4X12
 S0K64 SCREW M4X12
 S0K65 SCREW M4X12
 S0K66 SCREW M4X12
 S0K67 SCREW M4X12
 S0K68 SCREW M4X12
 S0K69 SCREW M4X12
 S0K70 SCREW M4X12
 S0K71 SCREW M4X12
 S0K72 SCREW M4X12
 S0K73 SCREW M4X12
 S0K74 SCREW M4X12
 S0K75 SCREW M4X12
 S0K76 SCREW M4X12
 S0K77 SCREW M4X12
 S0K78 SCREW M4X12
 S0K79 SCREW M4X12
 S0K80 SCREW M4X12
 S0K81 SCREW M4X12
 S0K82 SCREW M4X12
 S0K83 SCREW M4X12
 S0K84 SCREW M4X12
 S0K85 SCREW M4X12
 S0K86 SCREW M4X12
 S0K87 SCREW M4X12
 S0K88 SCREW M4X12
 S0K89 SCREW M4X12
 S0K90 SCREW M4X12
 S0K91 SCREW M4X12
 S0K92 SCREW M4X12
 S0K93 SCREW M4X12
 S0K94 SCREW M4X12
 S0K95 SCREW M4X12
 S0K96 SCREW M4X12
 S0K97 SCREW M4X12
 S0K98 SCREW M4X12
 S0K99 SCREW M4X12
 S0K100 SCREW M4X12



ASSEMBLY VERSION TABLE

Version	Component
-00	SMALL BOX 120V VERSION
-01	SMALL BOX 230V VERSION
-02	BIG BOX 230V VERSION
-03	BIG BOX 120V VERSION
-04	FS 120V VERSION
-05	FS 240V VERSION
-06	SRM1801/TH18S 120V
-07	SRM1801/TH18S 230V

APPROVALS
 DATE: 6/25/2008
 DRAWN: RJ
 CHECKED:
 NP ENG:
 MATERIAL:
 MFG:
 MFG ENG:
 ISSUED:

© 2007-2011 LOUD TECHNOLOGIES INC.
 ALL RIGHTS RESERVED
 THE INFORMATION CONTAINED HEREIN
 IS PROPRIETARY AND CONFIDENTIAL
 PROPERTY OF LOUD TECHNOLOGIES INC.

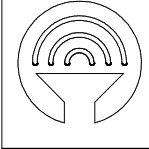
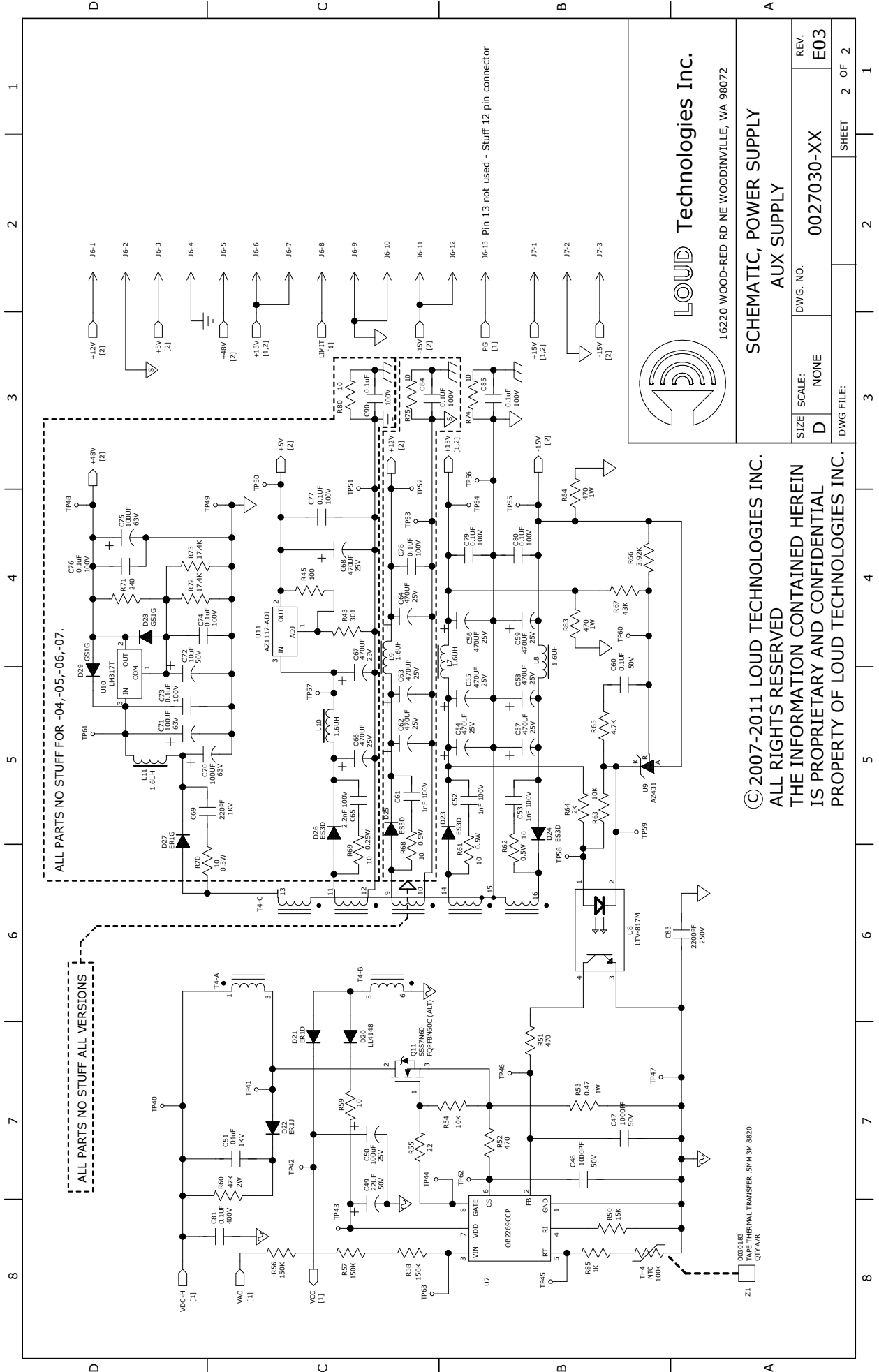
0027030-XX PCB ASSY SCHEMATIC, PM PS
 002581-04 PCB FAB POWERED MIXER POWER SUPPLY BOARD

NO STUFF, ALL VERSIONS

© 2007-2011 LOUD TECHNOLOGIES INC.
 16220 WOOD-RED RD NE WOODINVILLE, WA 98072

SCHEMATIC, POWER SUPPLY
 MAIN SUPPLY

SIZE SCALE: NONE
 DWG. NO: 0027030-XX
 REV: E03
 SHEET: 1 OF 2



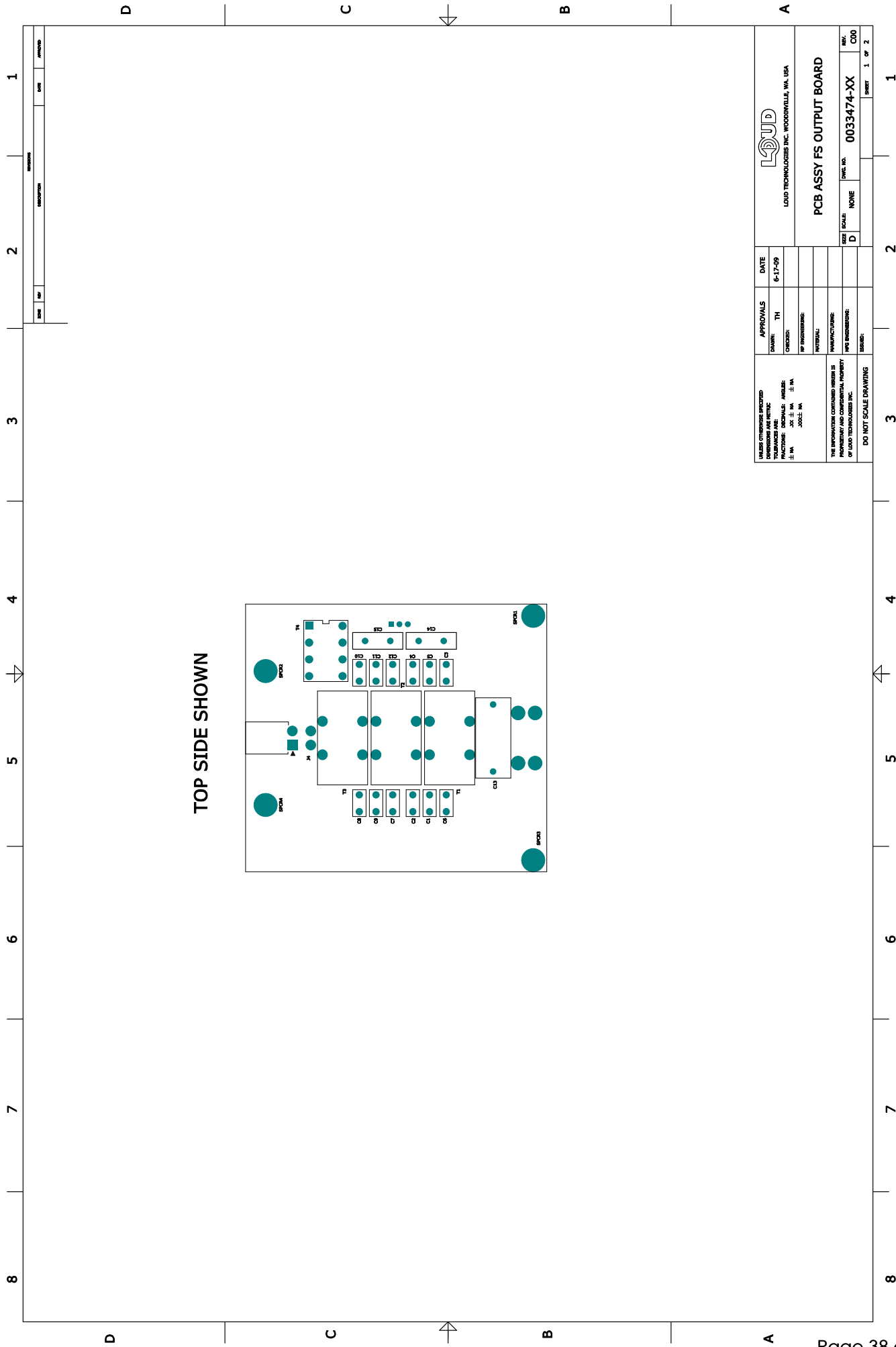
LOUD Technologies Inc.

16220 WOOD-RED RD NE WOODINVILLE, WA 98072

SCHEMATIC, POWER SUPPLY
AUX SUPPLY

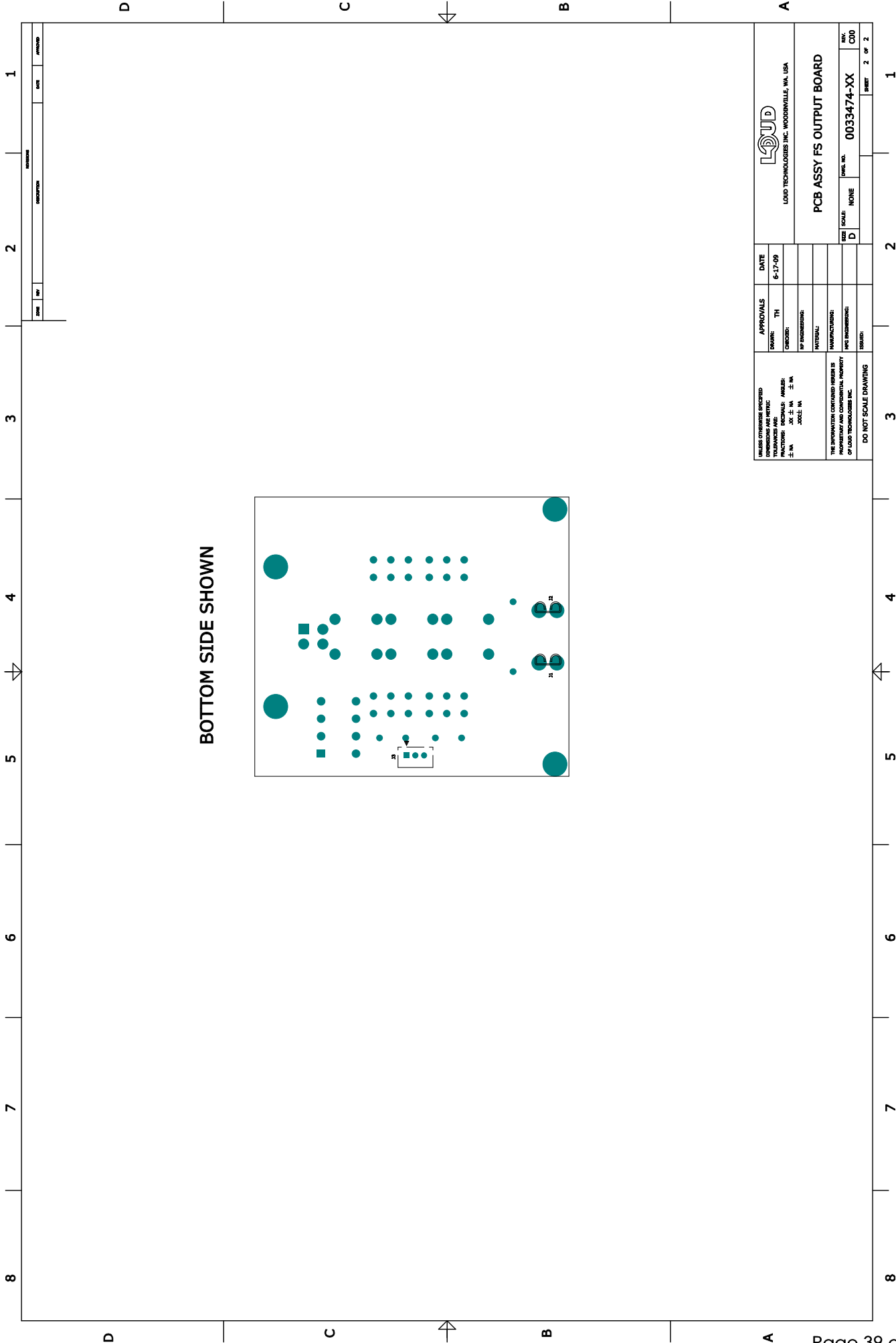
SIZE	SCALE:	DWG. NO.	REV.
D	NONE	0027030-XX	E03
DWG FILE:			SHEET 2 OF 2

© 2007-2011 LOUD TECHNOLOGIES INC.
ALL RIGHTS RESERVED
THE INFORMATION CONTAINED HEREIN
IS PROPRIETARY AND CONFIDENTIAL
PROPERTY OF LOUD TECHNOLOGIES INC.



TOP SIDE SHOWN

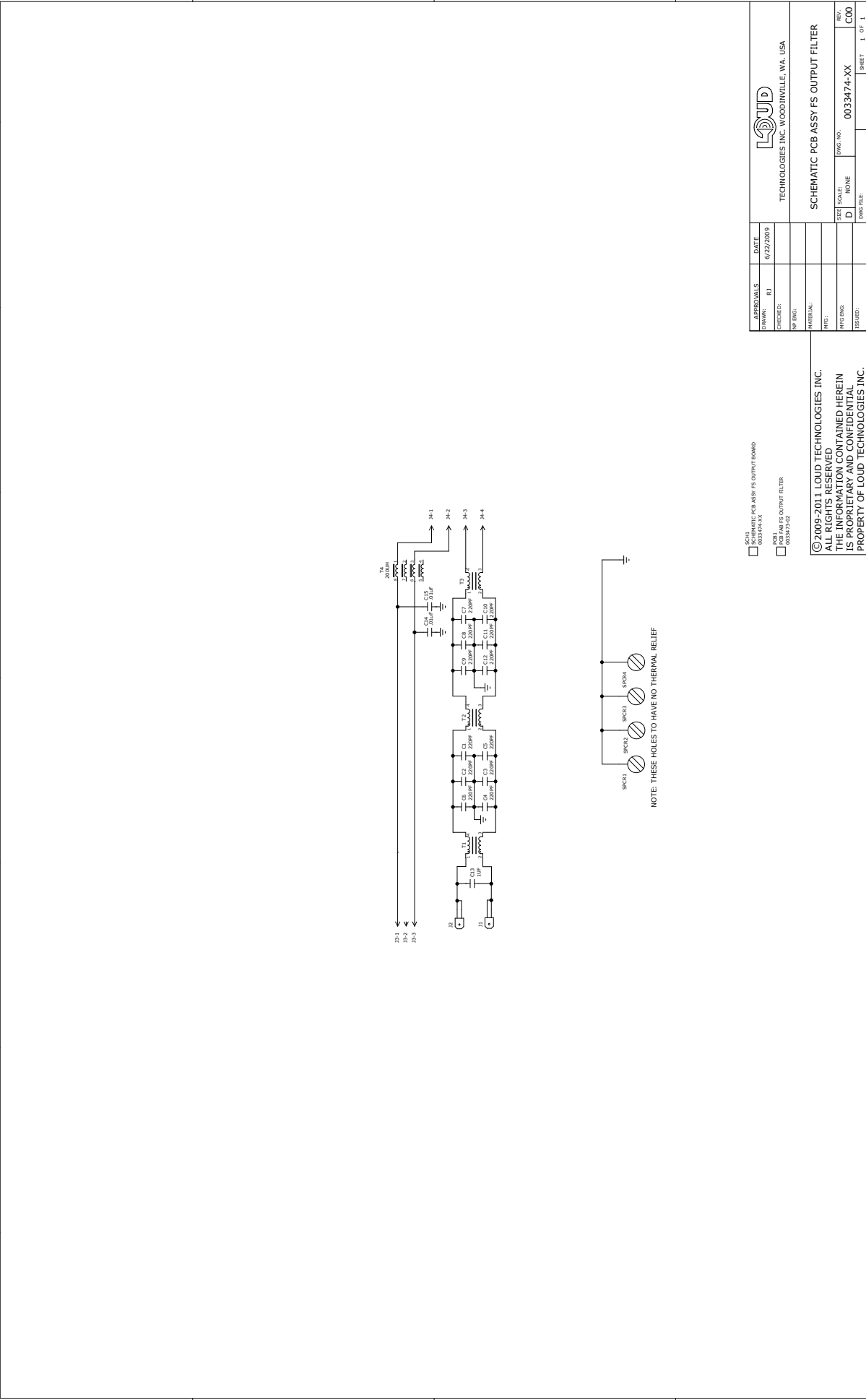
UNLESS OTHERWISE SPECIFIED DIMENSIONS ARE METRIC DIMENSIONS IN PARENTHESES ARE INCHES FINISHES: SOLDERABLE ANNEAL: 100 ± 0.1 IN ± 0.004 IN 100 ± 0.1 IN ± 0.004 IN	APPROVALS DRAWN: TH CHECKED: [Signature] BY: [Signature] DATE: 6-17-09	L ^{TD} LOUD TECHNOLOGIES INC. WOODBRIDGE, VA, USA
THE INFORMATION CONTAINED HEREIN IS PROPRIETARY AND CONFIDENTIAL PROPERTY OF LOUD TECHNOLOGIES INC. DO NOT SCALE DRAWING	MATERIAL: MANUFACTURER: MFG. IDENTIFICATION: ISSUED:	SIZE: NONE DWG. NO.: 0033474-XX REV.: COO SHEET 1 OF 2



BOTTOM SIDE SHOWN

ALL RIGHTS RESERVED. REPRODUCING OR TRANSMITTING IN ANY FORM OR BY ANY MEANS IS PROHIBITED WITHOUT THE WRITTEN PERMISSION OF LSI LOGIC.		APPROVALS DRAWN: TH CHECKED:	DATE 6-17-09
THE INFORMATION CONTAINED HEREIN IS PROPRIETARY AND CONFIDENTIAL PROPERTY OF LSI LOGIC.		BY PERMISSION: INTERNAL:	PCB SCALE D NONE
DO NOT SCALE DRAWING		MANUFACTURING: SPEC. REQUIREMENTS:	REV. C/D 0033474-XX
LSI LOGIC LSI LOGIC TECHNOLOGIES INC. WOODBRIDGE, VA, USA		PCB ASSY FS OUTPUT BOARD	
		SHEET 2 OF 2	1

8 7 6 5 4 3 2 1



NOTE: THESE HOLES TO HAVE NO THERMAL RELIEF

APPROVALS	DATE
DESIGNED BY: RJ	8/22/2009
CHECKED:	
DATE:	
BY:	
MATERIAL:	
REV:	
DATE:	
BY:	
DATE:	
BY:	

SCHEMATIC FOR ASSYS OUTPUT BOARD
0033474-XX
FOR ASSYS OUTPUT FILTER
0033474-XX

© 2009-2011 LOUD TECHNOLOGIES INC.
ALL RIGHTS RESERVED
THE INFORMATION CONTAINED HEREIN
IS PROPRIETARY AND CONFIDENTIAL
PROPERTY OF LOUD TECHNOLOGIES INC.

LOUD
TECHNOLOGIES INC. WOODINVILLE, WA, USA

SCHEMATIC PCB ASSYS OUTPUT FILTER

SIZE: D
SCALE: NONE
REV: C00
DWG FILE: 0033474-XX
SHEET: 1 OF 1