

KC-600

STEREO MIXING KEYBOARD AMPLIFIER

SERVICE NOTES

Issued by RJA

Table of Contents

Cautionary Notes	2	Important Notes When Bundling the Wiring	15
Specifications	3	Wiring Diagram/Block Diagram	16
Location of Controls	4	Wiring List	18
Location of Controls	5	Parts List	20
Exploded View	6	Input Output Test	22
Exploded View Parts List	7	Circuit Board (Jack, Pre, PS1, Rotary SW Board)	24
Plain View	8	Circuit Diagram (Jack Board)	26
Plain View Parts List	9	Circuit Diagram (Pre Board: 1/4)	28
Exploded View (Fig.A)	10	Circuit Diagram (Pre Board: 2/4)	30
Exploded View (Fig.A) Parts List	11	Circuit Diagram (Pre Board: 3/4)	32
Plain View (Fig.A)	12	Circuit Diagram (Pre Board: 4/4)	34
Plain View (Fig.A) Parts List	13	Circuit Diagram (PS1 Board)	36
Exploded View (Fig.B)	14	Circuit Diagram (Rotary SW Board)	38
Plain View (Fig.B)	15	Circuit Board (IF Board)	39
Disassembly Procedure	15	Circuit Diagram (IF Board)	40



Copyright © 2018 Roland Corporation

All rights reserved. No part of this publication may be reproduced in any form without the written permission of Roland Corporation.

Cautionary Notes

Before beginning the procedure, please read through this document. The matters described may differ according to the model.

No User Data

This product cannot save user data. Backing up user data during servicing is not required.

Part Replacement

When replacing components near the power-supply circuit or a heat-generating circuit (such as a circuit provided with a heat sink or including a cement resistor), carry out the procedure according to the instructions with respect to the part number, direction, and attachment position (mounting so as to leave an air gap between the component and the circuit board, etc.).

Parts List

A component whose part code is ***** will not be supplied as a service part because one of the following reasons applies.

- Because it is supplied as an assembled part (under a different part code).
- Because a number of circuit boards are grouped together and supplied as a single circuit board (under a different part code).
- Because supply is prohibited due to copyright restrictions.
- Because reissuance is restricted.
- Because the part is made to order (at current market price).
- Because it is carried in electronic data on the Roland web site.
- Because it is a package or an accessory irrelevant to the function maintenance of the main body.
- Because it can be replaced with an article on the market. (battery or etc.)

Circuit Diagram

In the circuit diagram, "NIU" is an abbreviation for "Not in Use," and "UnPop" is an abbreviation for "Unpopulated." They both mean non-mounted components. The circuit board and circuit board diagram show silk-screened indications, but no components are mounted.

There are cases that the circuit diagrams are omitted. This omission will happen to the highly integrated digital circuit boards (e.g. Main Board etc) that are virtually impossible to repair nor analyze.

Roland Japan Warranty

Please send the problem report with followings when the defect occurred within one year from production and within one month from the first customer's purchase.

- Model name:
- Serial number:
- Version:
- Purchase date by the first customer: yyyy/mm/dd
- Symptom:
- Frequency: always, sometimes or seldom
- Confirmed the symptom at your service dept: Yes/No

Please send the problem report to rjasc@roland.co.jp.

Specifications

Roland KC-600: STEREO MIXING KEYBOARD AMPLIFIER

Rated Power Output

200 W

Nominal Input Level (1 kHz)

CH1 (BALANCED, L/MONO, R): -50-- -20 dBu

CH2 (L/MONO, R): -20 dBu

CH3 (L/MONO, R): -20 dBu

CH4/MONITOR IN (L/MONO, R): -20 dBu

AUX IN (L, R, STEREO): -10 dBu

STEREO LINK (IN): 0 dBu

Nominal Output Level (1 kHz)

LINE OUT (L/MONO, R): +4 dBu

LINE OUT (BALANCED L, R): +4 dBu

STEREO LINK (OUT): 0 dBu

SUB OUT: +4 dBu

Speakers

Full Range: 38 cm (15 inches) x 1

Horn Tweeter: x 1

Controls

SHAPE button

POWER switch

GND LIFT switch

[CH1]

MIC/LINE knob

[CH2]

LINE knob

[CH3]

LINE knob

[CH4]

LINE knob

OUTPUT SEL knob

[AUX IN]

LEVEL knob

[PHONES]

VOLUME knob

[EQUALIZER]

LOW knob

MIDDLE knob

HIGH knob

MASTER knob

Indicator

Power

Connectors

CH1 (BALANCED) jack: XLR type

CH1 (L/MONO, R) jacks: 1/4-inch phone type

CH2 (L/MONO, R) jacks: 1/4-inch phone type

CH3 (L/MONO, R) jacks: 1/4-inch phone type

CH4/MONITOR IN (L/MONO, R) jacks: 1/4-inch phone type

LINE OUT (L/MONO, R) jacks: 1/4-inch phone type

LINE OUT (BALANCED L, R) jacks: XLR type

AUX IN (L, R) jacks: RCA phono type

AUX IN (STEREO) jacks: Stereo miniature phone type

SUB OUT jack: 1/4-inch phone type

STEREO LINK (IN, OUT) jacks: 1/4-inch phone type

PHONES jack: Stereo 1/4-inch TRS phone type (mono signal output)

Power Consumption

50 W

Dimensions

590 (W) x 445 (D) x 590 (H) mm (including casters)

23-1/4 (W) x 17-9/16 (D) x 23-1/4 (H) inches (including casters)

590 (W) x 445 (D) x 536 (H) mm (excluding casters)

23-1/4 (W) x 17-9/16 (D) x 21-1/8 (H) inches (excluding casters)

Weight

29 kg

63 lbs 15 oz

Accessory

AC Cord (#00894378, #5100029165, #5100012292, #00894389, #00907001, #5100013842, #03450323, #5100013648)

Owner's Manual (#5100058175, #5100059204)

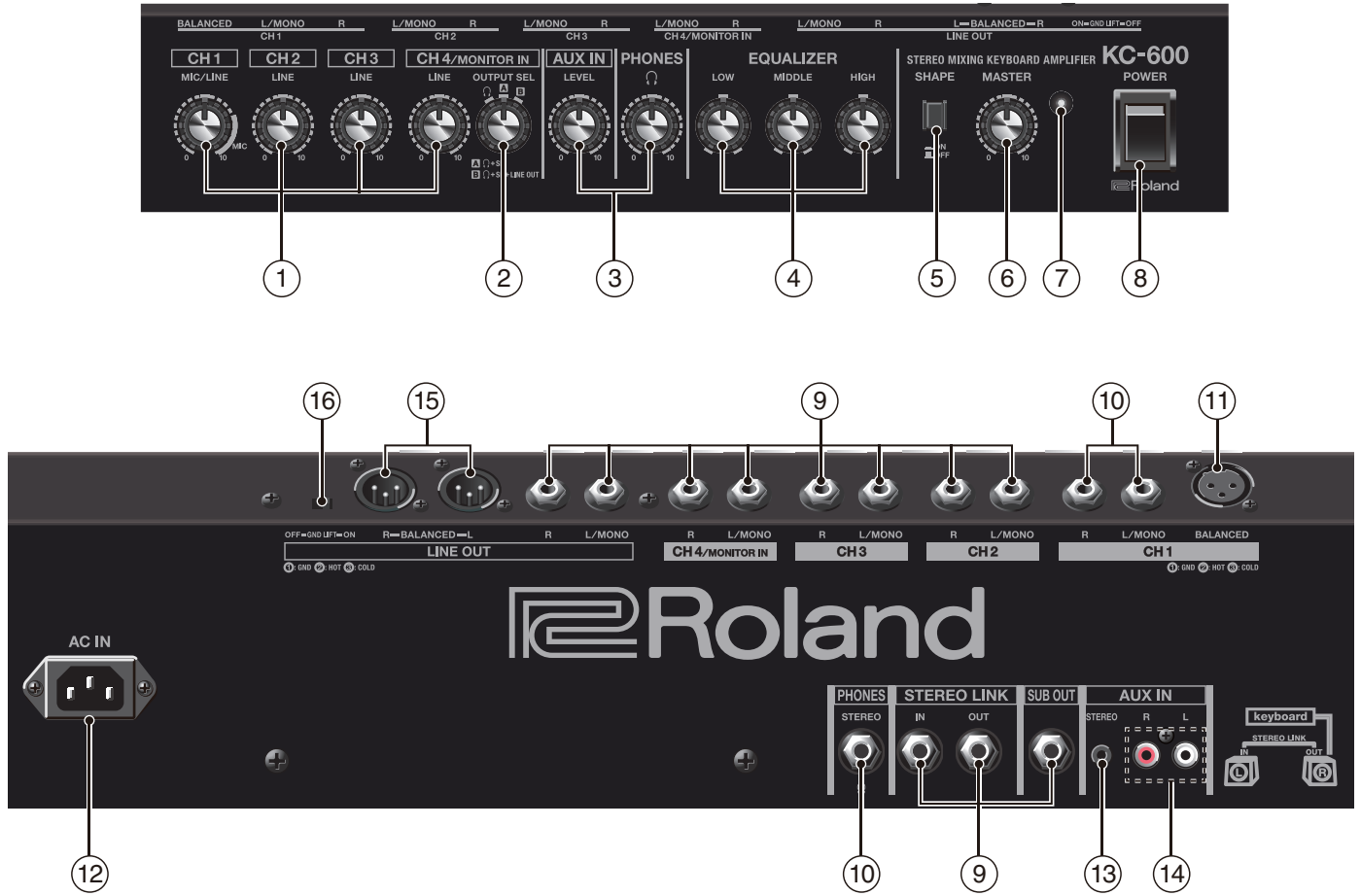
Caster (#5100046029) x 4

* 0 dBu = 0.775 Vrms

* Printed matters will not be supplied after the end of the production. Then, download the electronic file from the Roland web site.

* In the interest of product improvement, the specifications and/or appearance of this unit are subject to change without prior notice.

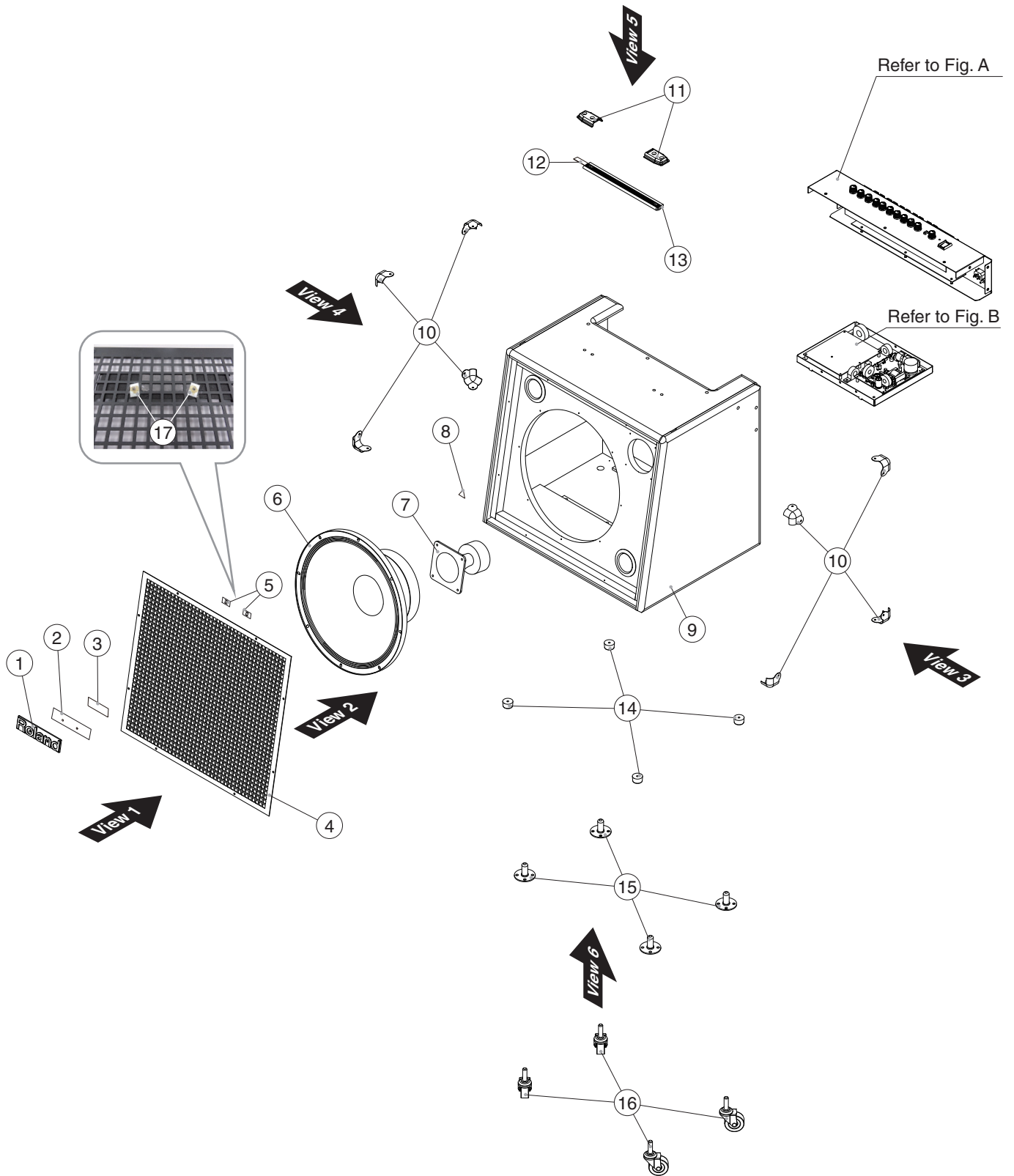
Location of Controls



Location of Controls

No.	Part Code	Part Name	Description	Q'ty
1	5100057924	R-KNOB	BASE + PLATE	4
	5100026268	ROTARY POTENTIOMETER	RK14K1220A4P	4
	*****	NUT		4
	*****	WASHER	attached to VR	4
2	5100057924	R-KNOB	BASE + PLATE	1
	13119218	ROTARY SWITCH	SRBM132400	1
	*****	NUT M7		1
	*****	WASHER M7	attached to SW	1
3	5100057924	R-KNOB	BASE + PLATE	2
	01120156	ROTARY POTENTIOMETER	RK14K12B0A5B 10KBX2	2
	*****	NUT		2
	*****	WASHER	attached to VR	2
4	5100057924	R-KNOB	BASE + PLATE	3
	5100026264	ROTARY POTENTIOMETER	RK11K1120091	3
	*****	NUT		3
	*****	WASHER	attached to VR	3
5	5100016833	BUTTON	710-11033-02-00	1
	01782623	SWITCH	SPUP128100	1
6	5100057924	R-KNOB	BASE + PLATE	1
	5100026263	ROTARY POTENTIOMETER	RK11K1120AA4	1
	*****	NUT		1
	*****	WASHER	attached to VR	1
7	5100003360	LED	L-934MBD-F01 (153-L-934MBDLF)	1
8	01786012	SEESAW SWITCH	JW-M11RKK	1
	01786045	SW HOLDER	AT-217K	1
	5100046598	POWER SW CUSHION		2
9	5100024419	6.5MM JACK	PJ-644C-04-EP(610-11020-01-00)	11
	5100046593	JACK SPACER		11
	*****	NUT		11
	*****	WASHER	attached to Jack	11
10	5100031944	6.5MM JACK	PJ-644C-EP	3
	5100046593	JACK SPACER		3
	*****	NUT		3
	*****	WASHER	attached to Jack	3
11	5100029984	XLR CONNECTOR	CT3-12FB-EP	1
12	5100051443	M1909-C	AC INLET	1
13	5100050453	3.5MM JACK	HSJ2000-01-010	1
14	5100020312	RCA CONNECTOR	HSP-252V3P-04(610-11032-04-00)	1
15	00122123	XLR CONNECTOR	YKF52-5003N	2
16	5100026336	SLIDE SWITCH	SSSU122500	1

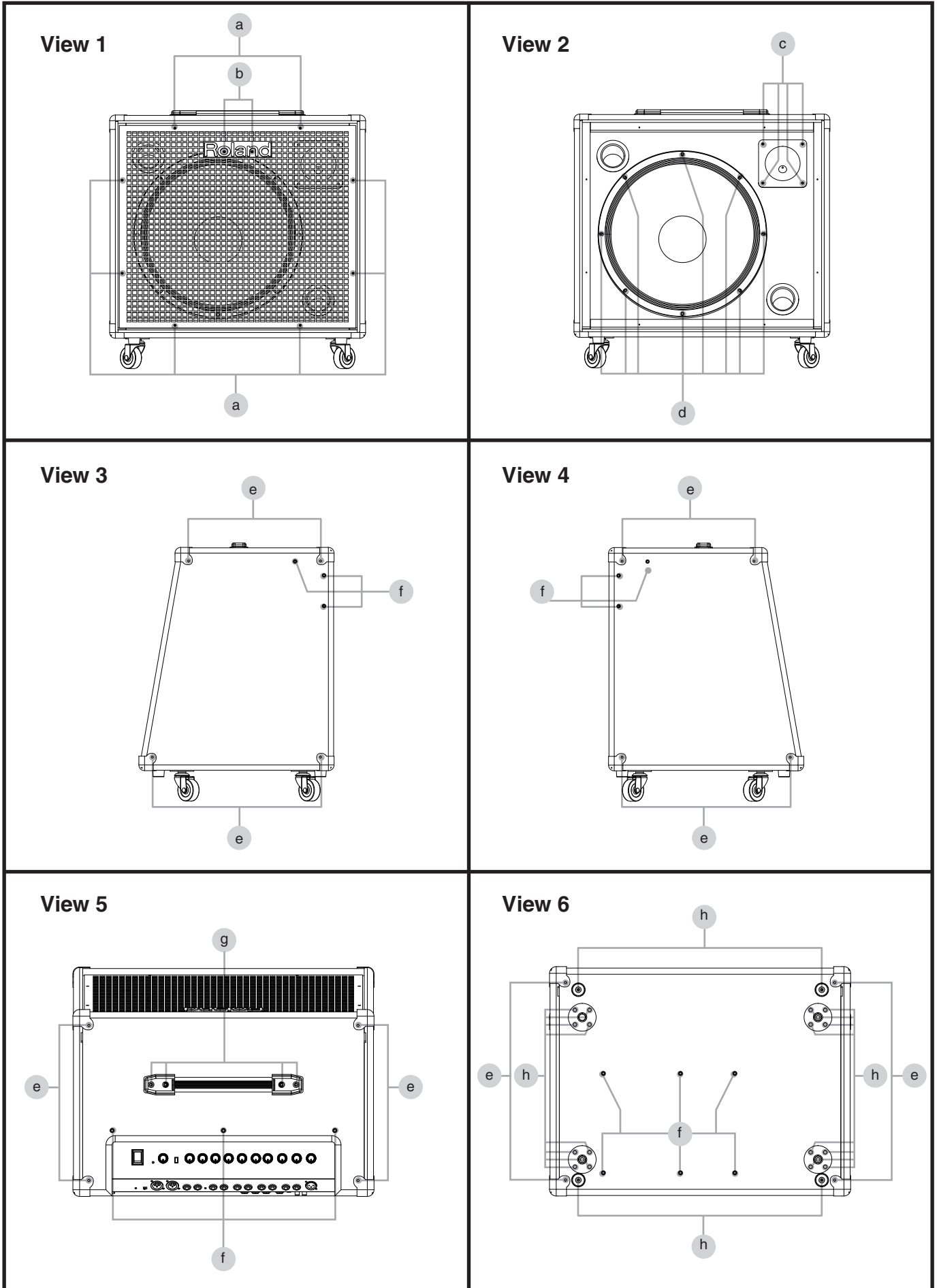
Exploded View



Exploded View Parts List

No.	Part Code	Part Name	Description	Q'ty
	5100057291	GRILLE ASSY		1
	<i>* This unit includes the following parts.</i>			
1	5100007646	ROLAND BADGE	SLV H38 DHG	1
2	5100057946	FELT	148X30X0.5T	1
3	5100032020	ADHESIVE TAPE	NITTO #5000NS W24MM 50M	-
4	*****	GRILLE		1
5	40011689	SPEED NUT M3	F-TYPE	2
17	40122445	ADHESIVE CEMEDINE SUPER-X	NO.8008 170G/135ML	-
6	5100058064	SPEAKER	W1208-093A	1
7	5100058059	SPEAKER	TH08-094A	1
	5100057293	CABINET ASSY	W/O SPEAKER	1
	<i>* This unit includes the following parts.</i>			
8	40562234	UL LIGHTNING FLASH SEAL	CAUTION	1
9	*****	CABINET		1
10	5100049816	CORNER COVER		8
14	5100041039	FOOT	EK1206	4
15	5100046028	CASTER SOCKET		4
11	5100046027	HANDLE HOLDER		2
12	5100046026	HANDLE PLATE		1
13	5100046025	HANDLE		1
16	5100046029	CASTER		4

Plain View



Plain View Parts List

View 1

No.	Part Code	Part Name	Description	Q'ty
a	40010667	SCREW 4X16	TRUSS TAPPING A FE BZC	8
b	40230789	SCREW M3X10	OVAL MACHINE BZC	2

View 2

No.	Part Code	Part Name	Description	Q'ty
c	40010689	SCREW 4X25	TRUSS TAPPING A FE BZC	4
d	40019023	SCREW 4X20	BINDING TAPPING A BZC	8

View 3

No.	Part Code	Part Name	Description	Q'ty
e	5100033933	SCREW 3.5X16	TRUSS TAPPING A BZC	4
f	5100049804	SCREW M5X35 (D13.5)	TRUSS MACHINE BZC	3

View 4

No.	Part Code	Part Name	Description	Q'ty
e	5100033933	SCREW 3.5X16	TRUSS TAPPING A BZC	4
f	5100049804	SCREW M5X35 (D13.5)	TRUSS MACHINE BZC	3

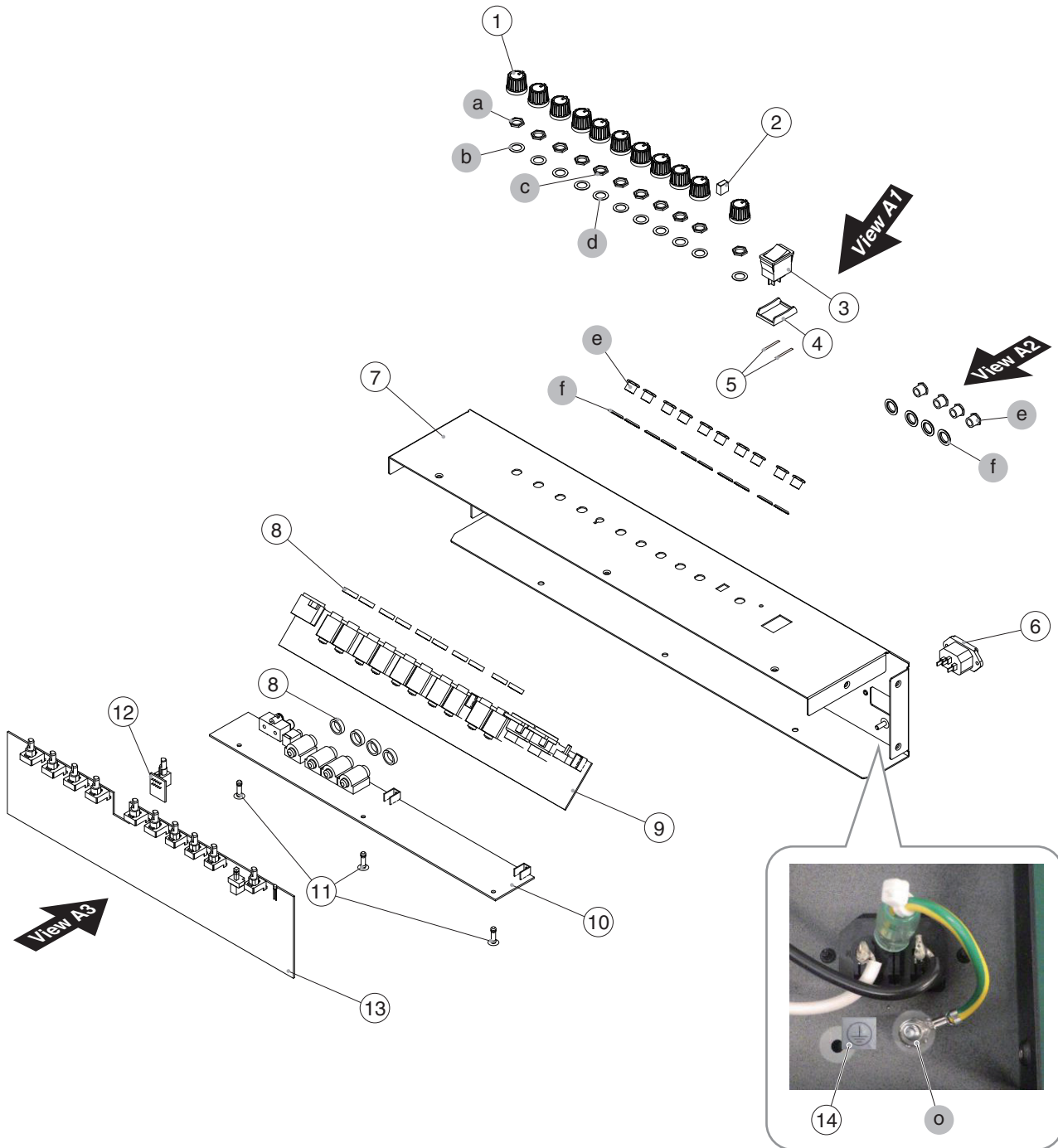
View 5

No.	Part Code	Part Name	Description	Q'ty
e	5100033933	SCREW 3.5X16	TRUSS TAPPING A BZC	4
f	5100049804	SCREW M5X35 (D13.5)	TRUSS MACHINE BZC	3
g	40010489	SCREW M5X30	OVAL FE BZC	4

View 6

No.	Part Code	Part Name	Description	Q'ty
e	5100033933	SCREW 3.5X16	TRUSS TAPPING A BZC	4
f	5100049804	SCREW M5X35 (D13.5)	TRUSS MACHINE BZC	6
h	40010678	SCREW 4X20	TRUSS TAPPING A FE BZC	20

Exploded View (Fig.A)

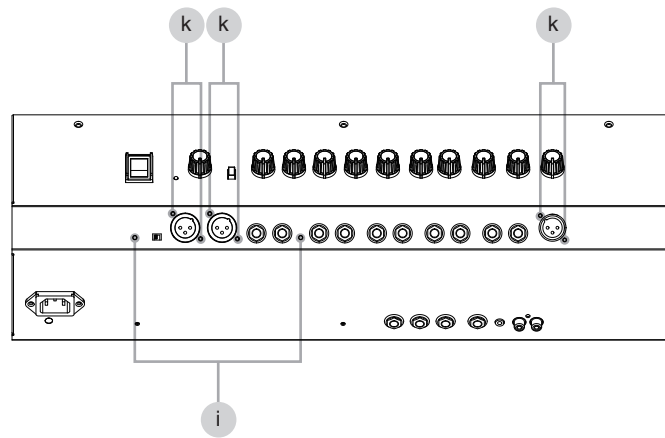


Exploded View (Fig.A) Parts List

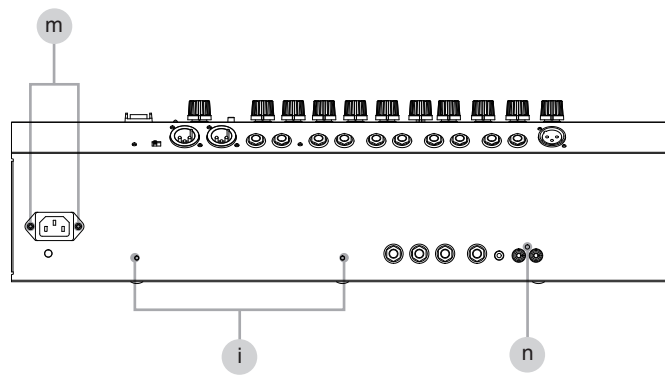
No.	Part Code	Part Name	Description	Q'ty
1	5100057924	R-KNOB	BASE + PLATE	11
2	5100016833	BUTTON	710-11033-02-00	1
3	01786012	SEESAW SWITCH	JW-M11RKK	1
4	01786045	SW HOLDER	AT-217K	1
5	5100046598	POWER SW CUSHION		2
6	5100051443	AC INLET	M1909-C	1
7	5100057820	CHASSIS		1
8	5100046593	JACK SPACER		14
	5100057296	MAIN SHEET ASSY		1
		<i>* This unit includes the following parts.</i>		
9	*****	JACK BOARD		1
10	*****	PS1 BOARD		1
12	*****	ROTARY SW BOARD		1
13	*****	PRE BOARD		1
11	5100057927	PWB SPACER	RBS-12	3
14	40013812	CAUTION SEAL	IEC #142	1
a	*****	NUT	attached to VR	10
b	*****	WASHER	attached to VR	10
c	*****	NUT M7	attached to SW	1
d	*****	WASHER M7	attached to SW	1
e	*****	NUT	attached to Jack	14
f	*****	WASHER	attached to Jack	14
o	5100050484	HEX NUT M4	W/SPW ZC	1
	40011889	EXTERNAL TOOTH WASHER M4	FECM	1

Plain View (Fig.A)

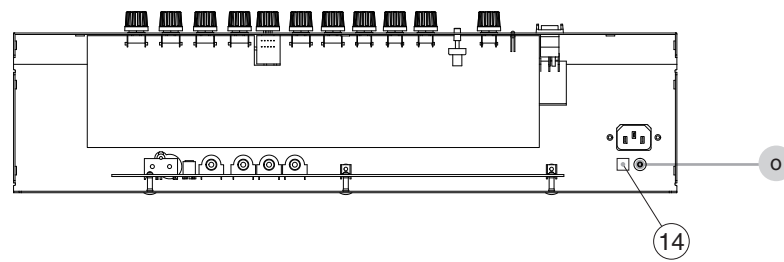
View A1



View A2



View A3



Plain View (Fig.A) Parts List

View A1

No.	Part Code	Part Name	Description	Q'ty
i	40237101	SCREW M3X8	PAN MACHINE W /SW+SMALL PW BZC	2
k	5100032950	SCREW 2.9X9	BINDING TAPTITE B BZC	6

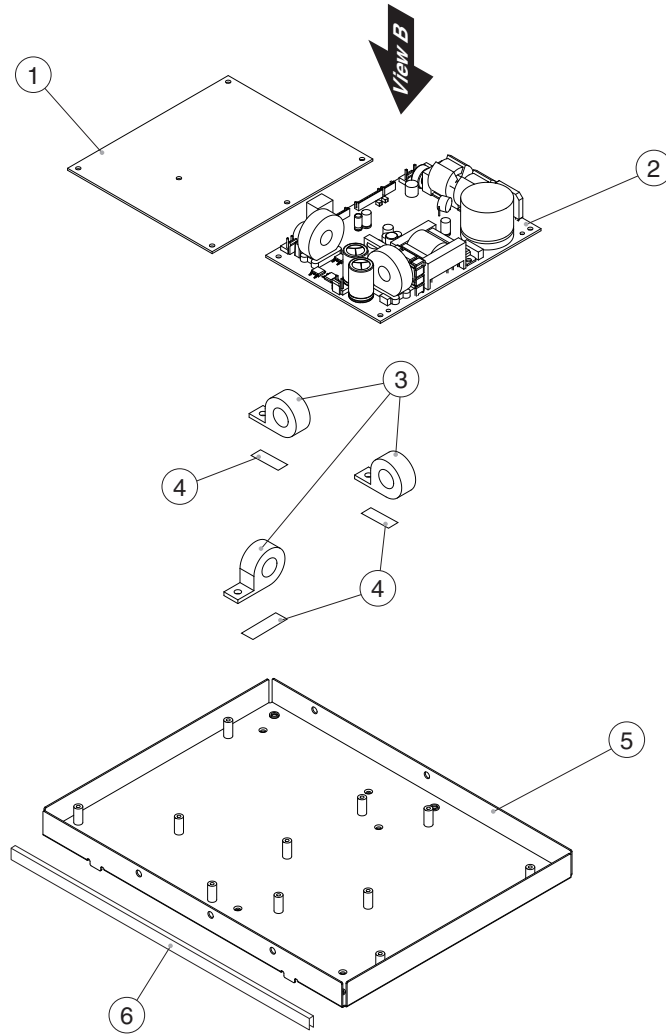
View A2

No.	Part Code	Part Name	Description	Q'ty
i	40237101	SCREW M3X8	PAN MACHINE W /SW+SMALL PW BZC	2
m	40011156	SCREW 3X8	FLAT TAPTITE B BZC	2
n	40011101	SCREW 3X8	BINDING TAPTITE B BZC	1

View A3

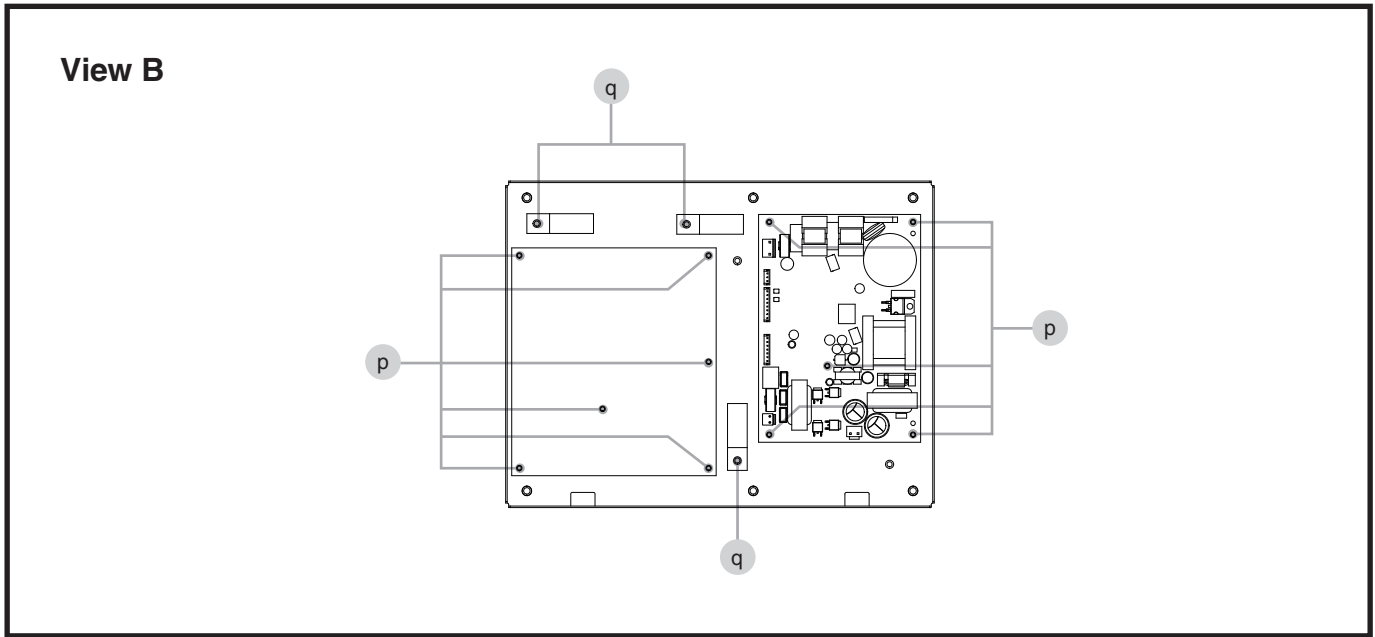
No.	Part Code	Part Name	Description	Q'ty
14	40013812	CAUTION SEAL	IEC #142	1
o	5100050484	HEX NUT M4	W /SPW ZC	1
	40011889	EXTERNAL TOOTH WASHER M4	FECM	1

Exploded View (Fig.B)



No.	Part Code	Part Name	Description	Q'ty
1	5100057304	IF BOARD ASSY		1
2	5100056488	POWER SUPPLY UNIT	300ASC UNIVERSAL	1
3	12449438	FERRITE-CORE	ESD-R-25DB	3
4	40345056	DOUBLE-FACED TAPE	#500 W10MM 20M 20P(CM)	-
5	5100057928	SUB CHASSIS		1
6	40122612	ACETATE TAPE	NITTO #5 BLACK W10MM 30M 20P	-

Plain View (Fig.B)



No.	Part Code	Part Name	Description	Q'ty
p	40017934	SCREW M3X6	PAN MACHINE W/SW+PW(L) FE ZC	11
q	40013001	SCREW M4X8	PAN MACHINE W/SW+PW BZC	3

Disassembly Procedure

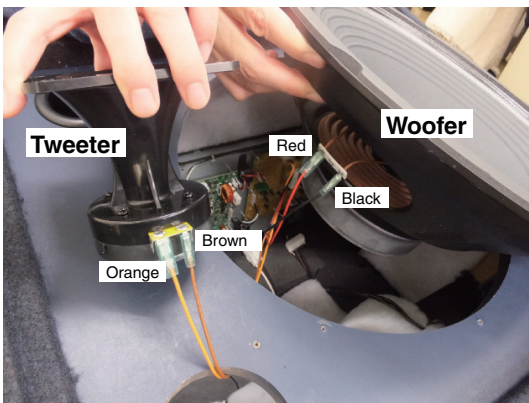
Detaching the Chassis Assy

1. Remove screws **f** (x 3) in **View 5** at **Plain View** (p. 8).
2. Remove screws **f** (x 3) in **View 3** and screws **f** (x 3) in **View 4** at **Plain View** (p. 8).
3. Slide the Chassis Assy a short distance toward the rear side and disconnect wirings (x 3).
4. Pull out the Chassis Assy slowly.

Detaching the Speaker

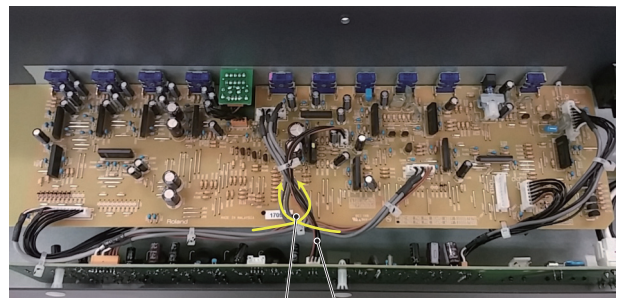
1. Remove screws **a** (x 8) in **View 1** at **Plain View** (p. 8) and detach the Grill Assy.
2. Remove screws **c** (x 4) and **d** (x 8) in **View 2** at **Plain View** (p. 8).
3. Detach the speakers slowly and disconnect wirings connected to the speakers.

* When connecting the wirings, refer to the following figure.



Important Notes When Bundling the Wiring

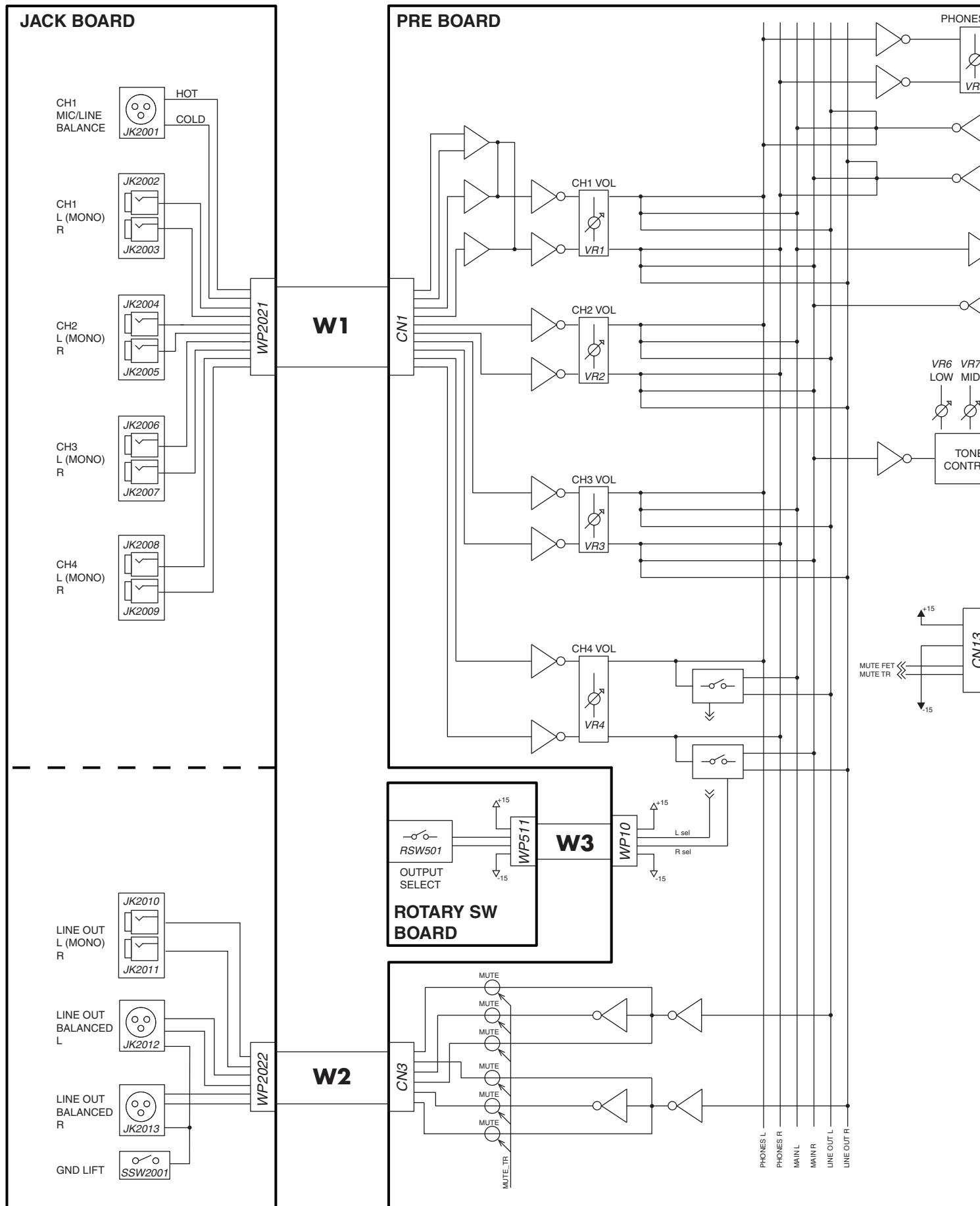
* When bundling the wiring, give attention to the following points.

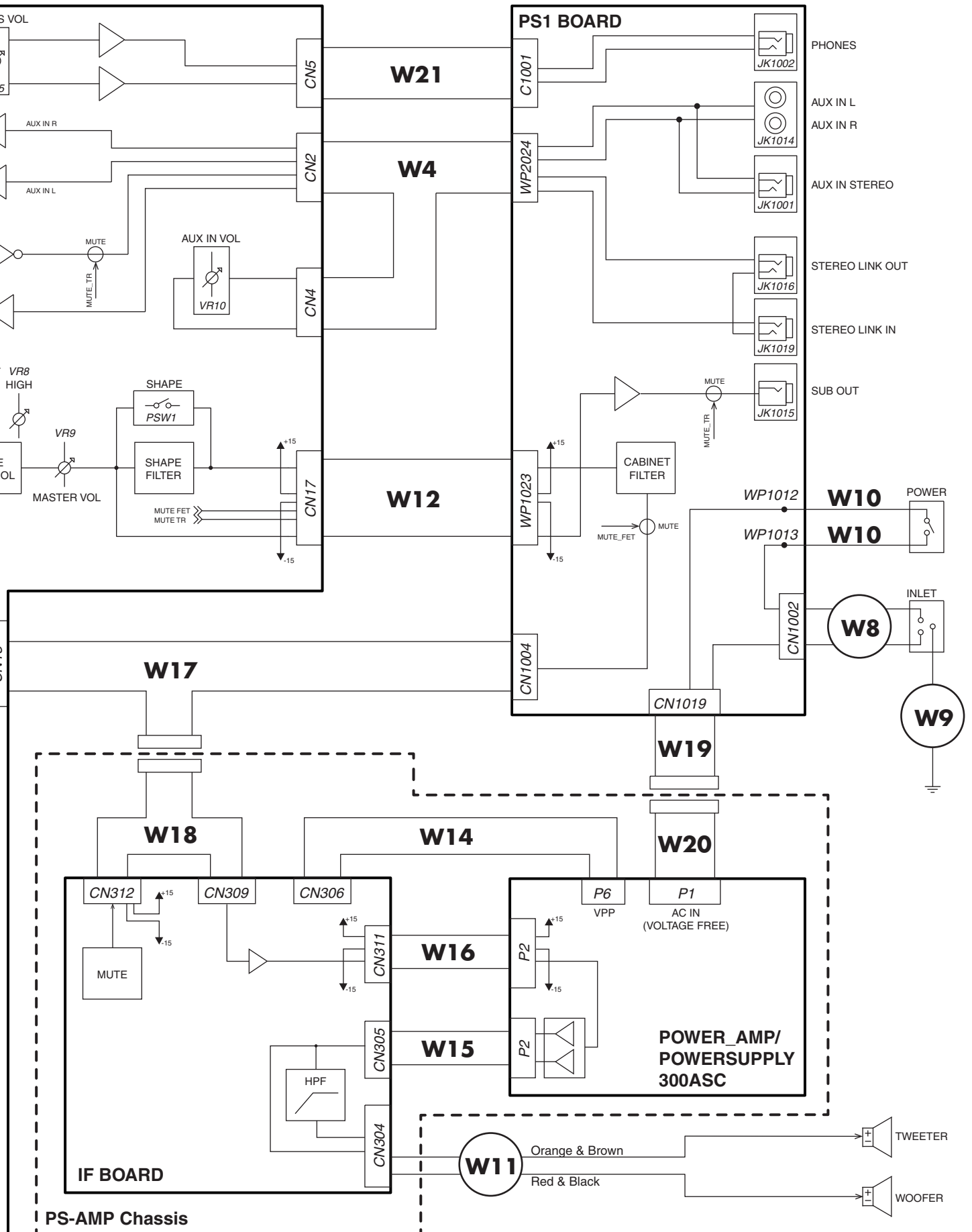


Cross the left and right wirings and bundle them.

Do not bundle this wiring.

Wiring Diagram/Block Diagram





Wiring List

No.	Part Code	Part Name	Description	Q'ty
W1	5100057355	WIRING	W1 (2547/1007#28)	1
W2	5100057357	WIRING	W2 (1007#28 7X150-PHR-SAN-F)	1
W3	5100057308	WIRING	W3 (1007#28 4X50-SAN-SAN-F)	2
W4	5100057309	WIRING	W4 (1185/1007#28)	1
W8	5100057345	WIRING	W8 (1672#18-WHT/BLK)	1
W9	5100048516	WIRING	W17 (1015#18-GRN&YEL)	1
W10	5100057310	WIRING	W10 (1672#18-BLK)	2
W11	5100057346	WIRING	W11 (1015#22-OR/BN/BK/RD)	1
W12	5100057311	WIRING	W12 (1185/1007#28)	1
W14	5100057348	WIRING	W14 (1007#18 2X280-NVR-NVR-F)	1
W15	5100057349	WIRING	W15 (1015#22 2X150-VHR-VHR-F)	1
W16	5100057350	WIRING	W16 (1007#24/2547#28)	1
W17	5100058012	WIRING	W17 (1015#18-GRN&YEL)	1
W18	5100058013	WIRING	W18 (1185#28/1007#26)	1
W19	5100058014	WIRING	W19 (1672#18-WHT/BLK)	1
W20	5100058016	WIRING	W20 (1672#18-WHT/BLK)	1
W21	5100058018	WIRING	W21 (1007#28 3X110-PHR-PHR-F)	1

Parts List

Safety Precautions:

The parts marked Δ have safety-related characteristics. Use only listed parts for replacement.

Due to one or more of the following reasons, parts with parts code ***** cannot be supplied as service parts.

- Supply is prohibited due to copyright restrictions.
- It is carried in electronic data on the Roland web site.
- The part is made to order (at current market price).
- It can be replaced with an article on the market. (battery or etc.)
- It is a package or an accessory irrelevant to the function maintenance of the main body.
- A number of circuit boards are grouped together and supplied as a single circuit board (under a different part code).
- Reissuance is restricted.
- It is supplied as an assembled part (under a different part code).

Note: The parts marked # are new. (initial parts) The description "Q'ty" means a necessary number of the parts per one product.

CASING				
#	5100057293	CABINET ASSY	W/O SPEAKER	1
#	5100057291	GRILLE ASSY		1
CHASSIS				
#	5100057820	CHASSIS		1
#	5100057928	SUB CHASSIS		1
KNOB, BUTTON				
	5100057924	R-KNOB	BASE + PLATE	11
	5100016833	BUTTON	710-11033-02-00	1
SWITCH				
	13119218	ROTARY SWITCH	SRBM132400	1
#	5100026336	SLIDE SWITCH	SSSU122500	1
	Δ 01786012	SEESAW SWITCH	JW-M11RKK	1
	01782623	SWITCH	SPUP128100	1
JACK, EXT TERMINAL				
	5100050453	3.5MM JACK	HSJ2000-01-010	1
	5100024419	6.5MM JACK	PJ-644C-04-EP(610-11020-01-00)	11
	5100031944	6.5MM JACK	PJ-644C-EP	3
	5100029984	XLR CONNECTOR	CT3-12FB-EP	1
	00122123	XLR CONNECTOR	YKF52-5003N	2
	5100020312	RCA CONNECTOR	HSP-252V3P-04(610-11032-04-00)	1
POWER SUPPLY UNIT				
#	Δ 5100056488	POWER SUPPLY UNIT	300ASC UNIVERSAL	1
SPEAKER, BUZZER				
#	5100058064	SPEAKER	W1508-094A	1
#	5100058059	SPEAKER	TH08-094A	1
PWB ASSY				
#	5100057296	MAIN SHEET ASSY		1
	* This unit includes the following parts.			
	*****	JACK BOARD		1
	*****	PRE BOARD		1
	*****	ROTARY SW BOARD		1
	*****	PS1 BOARD		1
#	5100057304	IF BOARD ASSY		1
DIODE				
	5100003360	LED	L-934MBD-F01 (153-L-934MBDLF)	1
POTENTIOMETER				
	5100026264	ROTARY POTENTIOMETER	RK11K1120091	3
	5100026263	ROTARY POTENTIOMETER	RK11K1120AA4	1
#	5100026268	ROTARY POTENTIOMETER	RK14K1220A4P	4
	01120156	ROTARY POTENTIOMETER	RK14K12B0A5B 10K BX2	2
FUSE, FUSE HOLDER				
	Δ 03670512	FUSE	5ST 5-R 5A /250V	FUSE1 on PS1 Board
				1

WIRING, CABLE

#	5100057355	WIRING	W1 (2547/1007#28)	1
#	5100057357	WIRING	W2 (1007#28 7X150-PHR-SAN-F)	1
#	5100057308	WIRING	W3 (1007#28 4X50-SAN-SAN-F)	2
#	5100057309	WIRING	W4 (1185/1007#28)	1
#	△ 5100057345	WIRING	W8 (1672#18-WHT/BLK)	1
#	5100057310	WIRING	W10 (1672#18-BLK)	2
#	5100057346	WIRING	W11 (1015#22-OR/BN/BK/RD)	1
#	5100057311	WIRING	W12 (1185/1007#28)	1
#	5100057348	WIRING	W14 (1007#18 2X280-NVR-NVR-F)	1
#	5100057349	WIRING	W15 (1015#22 2X150-VHR-VHR-F)	1
#	5100057350	WIRING	W16 (1007#24/2547#28)	1
#	△ 5100048516	WIRING	W17 (1015#18-GRN&YEL)	1
#	5100058012	WIRING	W17 (1185#28/1007#26)	1
#	5100058013	WIRING	W18 (1185#28/1007#26)	1
#	△ 5100058014	WIRING	W19 (1672#18-WHT/BLK)	1
#	△ 5100058016	WIRING	W20 (1672#18-WHT/BLK)	1
#	5100058018	WIRING	W21 (1007#28 3X110-PHR-PHR-F)	1

AC INLET, OUTLET

5100051443	M1909-C	AC INLET	1
------------	---------	----------	---

SCREWS

40017934	SCREW M3X6	PAN MACHINE W/SW+PW(L) FE ZC	11
40237101	SCREW M3X8	PAN MACHINE W/SW+SMALL PW BZC	4
40230789	SCREW M3X10	OVAL MACHINE BZC	2
40013001	SCREW M4X8	PAN MACHINE W/SW+PW BZC	3
40010489	SCREW M5X30	OVAL FE BZC	4
5100049804	SCREW M5X35 (D13.5)	TRUSS MACHINE BZC	15
5100032950	SCREW 2.9X9	BINDING TAPTITE B BZC	6
40011101	SCREW 3X8	BINDING TAPTITE B BZC	1
40011156	SCREW 3X8	FLAT TAPTITE B BZC	2
5100033933	SCREW 3.5X16	TRUSS TAPPING A BZC	16
40010667	SCREW 4X16	TRUSS TAPPING A FE BZC	8
40019023	SCREW 4X20	BINDING TAPPING A BZC	8
40010678	SCREW 4X20	TRUSS TAPPING A FE BZC	20
40010689	SCREW 4X25	TRUSS TAPPING A FE BZC	4
5100050484	HEX NUT M4	W/SPW ZC	1
40011689	SPEED NUT M3	F-TYPE	2
40011889	EXTERNAL TOOTH WASHER M4	FECM	1

MISCELLANEOUS

5100046025	HANDLE		1	
5100046026	HANDLE PLATE		1	
5100046027	HANDLE HOLDER		2	
5100046028	CASTER SOCKET		4	
5100007646	ROLAND BADGE	SLV H38 DHG	1	
5100049816	CORNER COVER		8	
5100041039	FOOT	EK1206	4	
12449438	FERRITE-CORE	ESD-R-25DB	3	
#	△ 5100057927	PWB SPACER	RBS-12	3
5100046593	JACK SPACER		14	
01786045	SW HOLDER	AT-217K	1	
5100005338	TERMINAL SLEEVE	TP-008 UL-G	1	
#	△ 5100057946	FELT	148X30X0.5T	1
40016523	INSULOK TIE 100M/M T-18R	(1000 PCS ORDERING PER)	19	
5100046598	POWER SW CUSHION		2	
△ 40013812	CAUTION SEAL	IEC #142	1	
△ 40562234	UL LIGHTNING FLASH SEAL	CAUTION	1	
40122612	ACETATE TAPE	NITTO #5 BLACK W10MM 30M 20P	-	
40345056	DOUBLE-FACED TAPE	#500 W10MM 20M 20P(CM)	-	
5100032020	ADHESIVE TAPE	NITTO #5000NS W24MM 50M	-	
40122445	ADHESIVE CEMEDINE SUPER-X	NO.8008 170G/135ML	-	

ACCESSORIES (Standard)

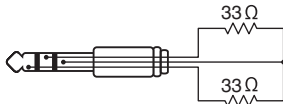
△	03340956	AC CORD SET PSE (W/ADAPTOR)	100V YA-101/YP-3NB/YC-13	(19) for 100V	1
△	00894378	AC CORD SET	120V SP301+IS14 SJT18/3	(22) for 117VU, 117U/CS	1
△	5100029165	AC CORD SET	115TW 2.5M SP301+IS14 VCTF	(25) for 115VTW	1
△	5100012292	AC CORD SET	117VBL 2.5M 3P DAIKEI 117VBL	(26) for 117VBL	1
△	00894389	AC CORD SET	230V SP22+IS14 H05VV-F3G1.0	(32) for 230VEU	1
△	00907001	AC CORD SET	240VE SP-62+IS-14	(49) for 230VE	1
△	5100013842	AC CORD SET	240VA 2.5M SAA HIRAKAWA	(59) for 240VA	1
△	03450323	AC CORD SET	220V YP-36 YC-13D	(65) for 220VCN	1
△	5100013648	AC CORD SET	220VK 10A 3P-3P 2.5M	(66) for 220VK	1
	5100046029	CASTER			4
#	5100058175	OWNER'S MANUAL	MULTILANGUAGE		1
#	5100059204	OWNER'S MANUAL	CHINESE		1

Input Output Test

Items Required

- Oscillator
- Noise meter
- DI-1 (ATT switch: -40 dB)
- Dummy plug (x 2)
- Dummy resistances (8Ω x 1)
- Connection cables

- 1/4-inch stereo phone plug with 33Ω load resistors



Testing Method

Following the table below, input the indicated signal to each input jack, and verify that a signal with the indicated value is output via the corresponding output jack.

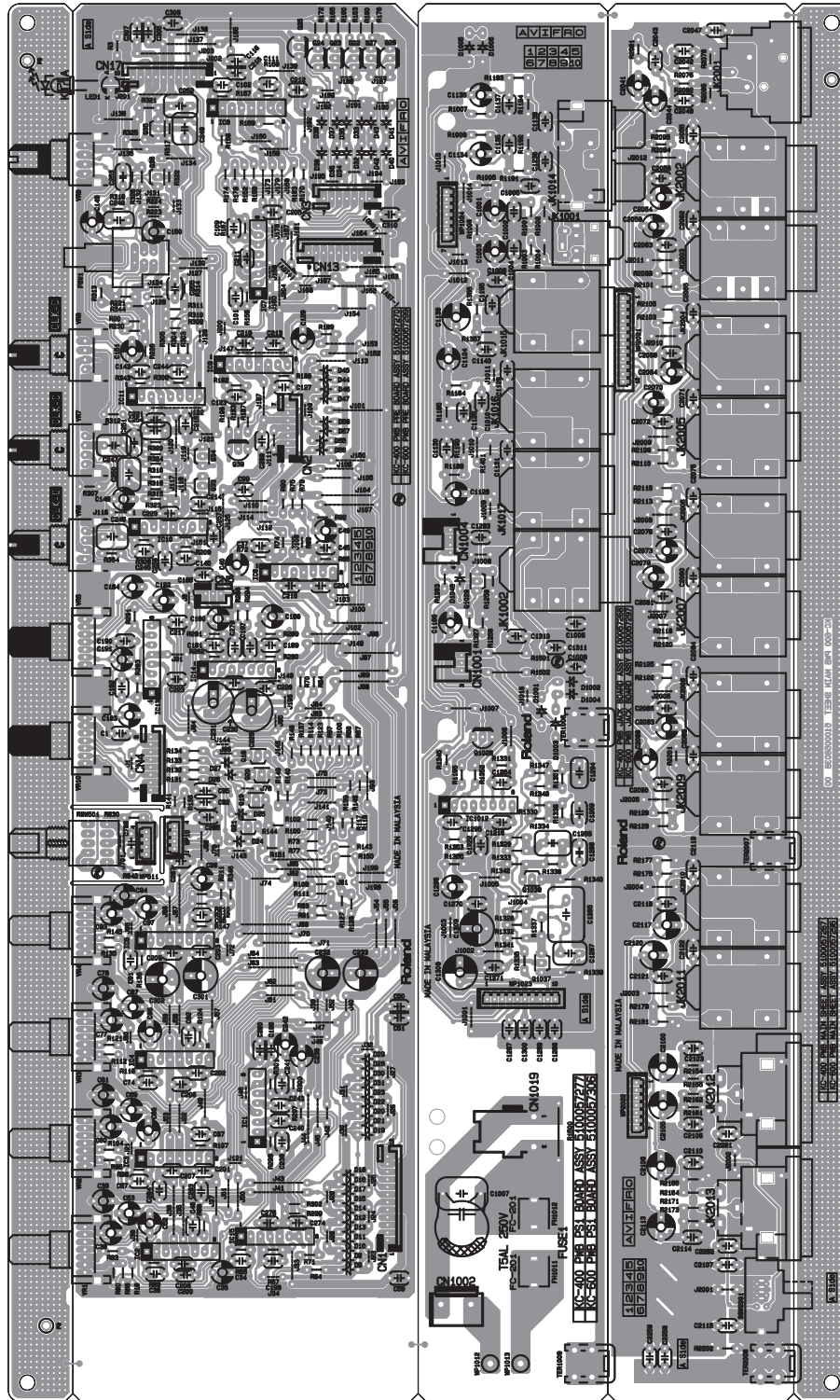
- * For PHONES OUT Test, connect a 1/4-inch stereo phone plug with 33Ω load resistors to the **PHONES** jack.
- * Input a balanced signal to the **CH1 BALANCED** connector via DI-1. Set the ATT switch on the DI-1 to -40 dB and input the signal indicated on the table to the INPUT jack on the DI-1.
- * Connect a 8Ω dummy resistance to the output terminals for the speaker instead of the speaker.
- * Amp output is BTL (bridge output). When connecting the measuring device, take the another ground.
- * When connecting a plug to the PHONES jack on this product, speaker's sound is not muted.
- * Speaker produces a small sound in PHONES OUT Test, however this is a normal operation.

W

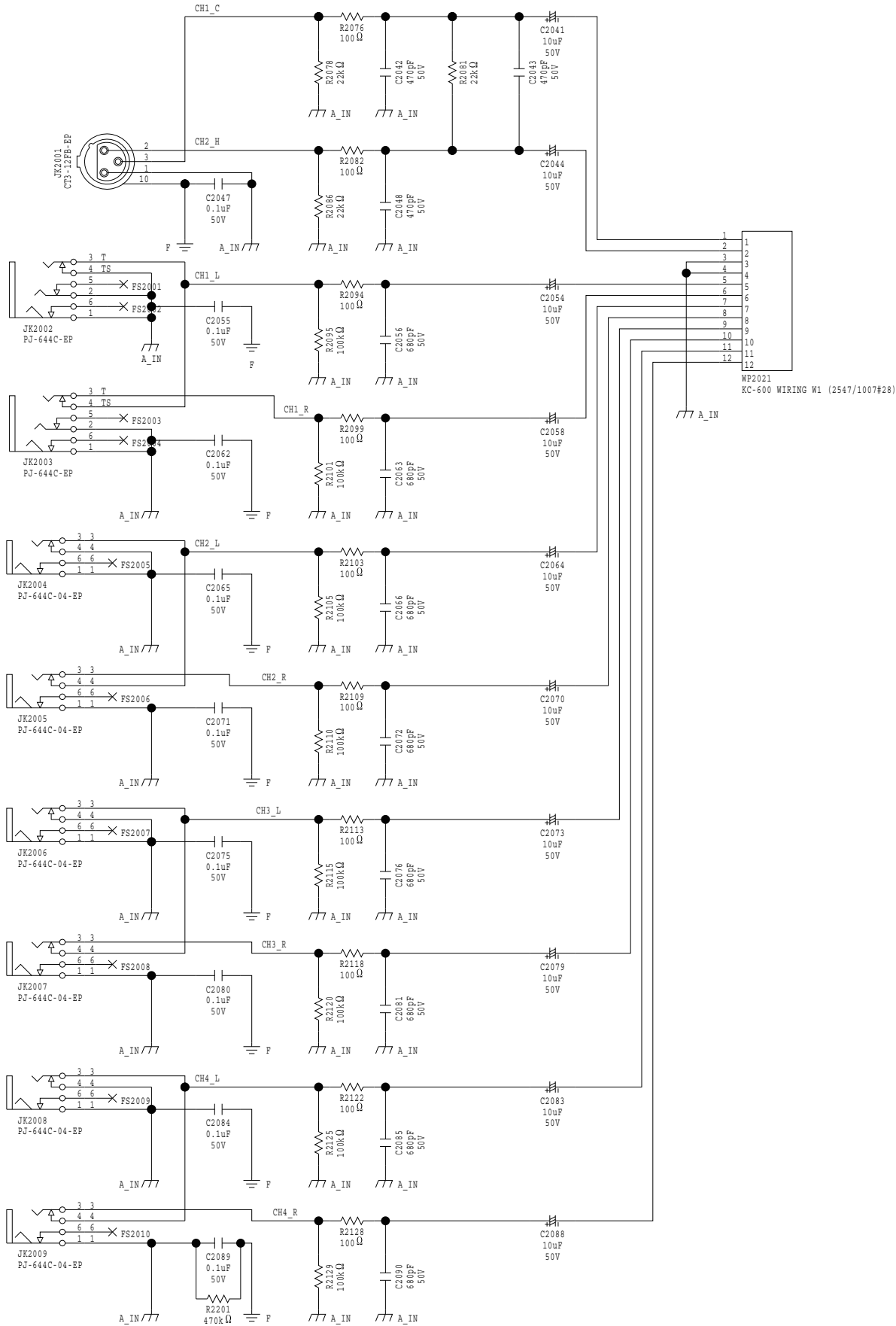
	Setting	Input Jack	Input Signal	Output Jack/Terminals	Output Level
LINE OUT Test	CH 1-4: Max OUTPUT SEL: B AUX IN: Max PHONES: Min EQ LOW/MID/HIGH: Center SHAPE: OFF MASTER: Min	CH1 L/MONO (CH1 R: Insert Open Plug)	1 kHz, -50 dBm, Sin	LINE OUT L/MONO (LINE OUT R: Insert open Plug)	-4.0 dBm±3.0 dB
		CH2 L/MONO (CH2 R: Insert Open Plug)	1 kHz, -20 dBm, Sin		+3.5 dBm±3.0 dB
		CH3 L/MONO (CH3 R: Insert Open Plug)	1 kHz, -20 dBm, Sin		+3.5 dBm±3.0 dB
		CH4 L/MONO (CH4 R: Insert Open Plug)	1 kHz, -20 dBm, Sin		+3.5 dBm±3.0 dB
		AUX IN STEREO L (Mini)	1 kHz, -10 dBm, Sin		-1.0 dBm±3.0 dB
		AUX IN L (RCA phono)	1 kHz, -10 dBm, Sin		-4.0 dBm±3.0 dB
		CH1 R	1 kHz, -50 dBm, Sin	LINE OUT R	-4.0 dBm±3.0 dB
		CH2 R	1 kHz, -20 dBm, Sin		+3.5 dBm±3.0 dB
		CH3 R	1 kHz, -20 dBm, Sin		+3.5 dBm±3.0 dB
		CH4 R	1 kHz, -20 dBm, Sin		+3.5 dBm±3.0 dB
		AUX IN STEREO R (Mini)	1 kHz, -10 dBm, Sin		-1.0 dBm±3.0 dB
		AUX IN R (RCA phono)	1 kHz, -10 dBm, Sin		-4.0 dBm±3.0 dB
		CH1 BALANCED	1 kHz, -15 dBm, Sin (to DI-1 INPUT)	LINE OUT L/MONO (LINE OUT R: Not Insert Plug)	-10.0 dBm±3.0 dB
		CH1 L/MONO (CH1 R: Not Insert Plug)	1 kHz, -50 dBm, Sin		-4.0 dBm±3.0 dB
	CH2 L/MONO (CH2 R: Not Insert Plug)	1 kHz, -20 dBm, Sin	+3.5 dBm±3.0 dB		
	CH3 L/MONO (CH3 R: Not Insert Plug)	1 kHz, -20 dBm, Sin	+3.5 dBm±3.0 dB		
	CH4 L/MONO (CH4 R: Not Insert Plug)	1 kHz, -20 dBm, Sin	+3.5 dBm±3.0 dB		
	AUX IN L (RCA phono)	1 kHz, -10 dBm, Sin	-10.0 dBm±3.0 dB		
	AUX IN R (RCA phono)	1 kHz, -10 dBm, Sin	-10.0 dBm±3.0 dB		
	CH 1-4: Max OUTPUT SEL: B AUX IN: Max PHONES: Min EQ LOW/MID/HIGH: Center SHAPE: OFF MASTER: Min GND LIFT: OFF	AUX IN L (RCA phono)	1 kHz, -10 dBm, Sin		LINE OUT L BALANCED (HOT-GND)
			1 kHz, -10 dBm, Sin	LINE OUT L BALANCED (COLD-GND)	-4.5 dBm±3.0 dB
		AUX IN R (RCA phono)	1 kHz, -10 dBm, Sin	LINE OUT R BALANCED (HOT-GND)	-4.5 dBm±3.0 dB
			1 kHz, -10 dBm, Sin	LINE OUT R BALANCED (COLD-GND)	-4.5 dBm±3.0 dB

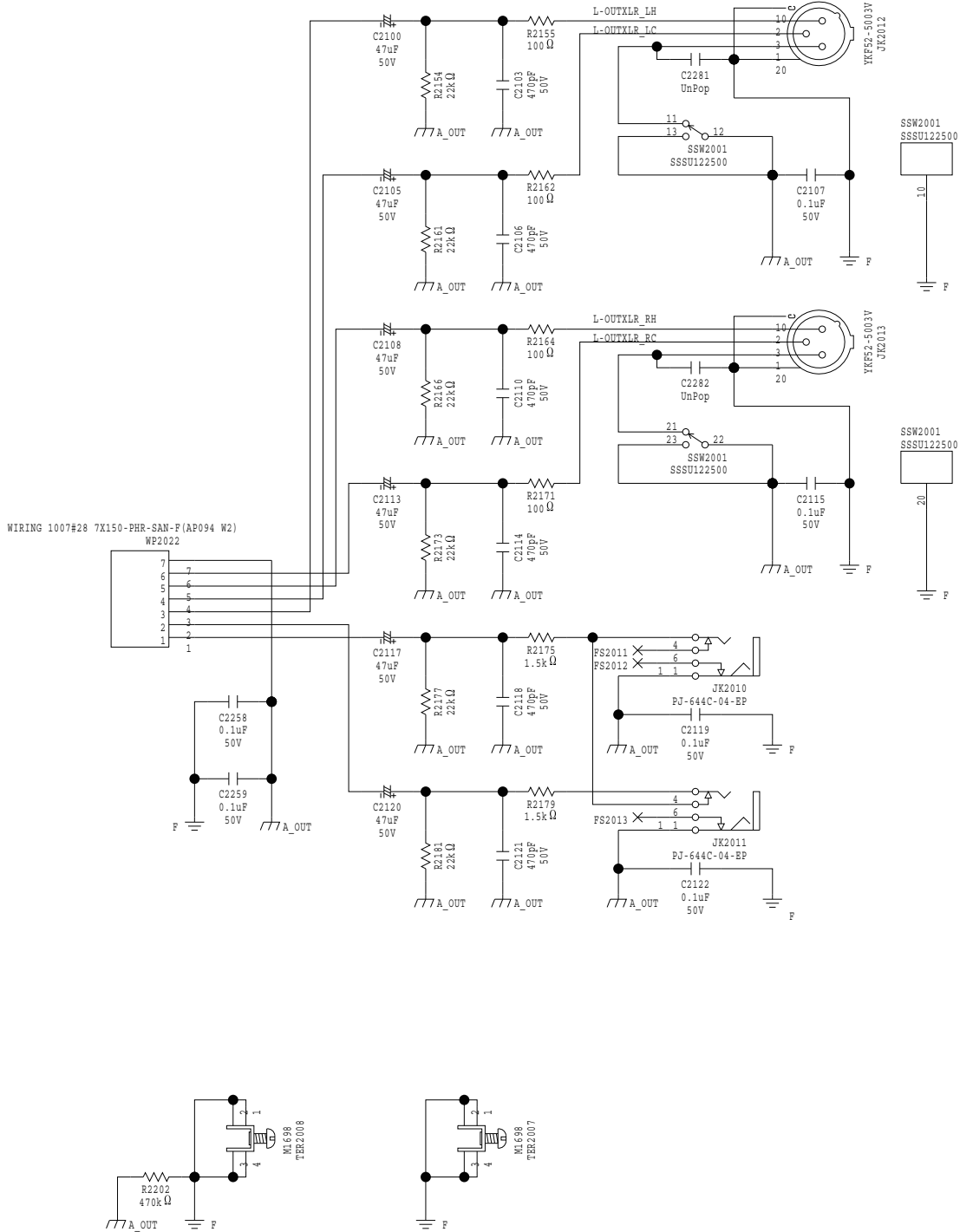
	Setting	Input Jack	Input Signal	Output Jack/Terminals	Output Level
PHONES OUT Test	CH 1-3: Min CH4: Max OUTPUT SEL: Ω AUX IN: Min PHONES: Max EQ LOW/MID/HIGH: Center SHAPE: OFF MASTER: Min CH 4 R: Not Insert Plug	CH4 L/MONO (CH4 R: Not Insert Plug)	1 kHz, -30 dBm, Sin	PHONES L (33 Ω Load)	+5.5 dBm \pm 3.0 dB
			1 kHz, -30 dBm, Sin	PHONES R (33 Ω Load)	+5.5 dBm \pm 3.0 dB
STEREO LINK OUT Test	CH 1-3: Min CH4: Max OUTPUT SEL: A AUX IN: Min PHONES: Min EQ W/MID/HIGH: Center SHAPE: OFF MASTER: Min	CH4 L/MONO (CH4 R: Not Insert Plug)	1 kHz, -20 dBm, Sin	STEREO LINK OUT	+1.0 dBm \pm 3.0 dB
WOOFER OUT Test	CH 1-3: Min CH4: Max OUTPUT SEL: A AUX IN: Min PHONES: Min EQ LOW/MID/HIGH: Center SHAPE: OFF MASTER: Max WOOFER OUT: 8 Ω Dummy Load TWEETER OUT: Open	STEREO LINK IN	1 kHz, -20 dBm, Sin	WOOFER OUT (8 Ω Dummy Load)	+18.0 dBm \pm 3.0 dB
TWEETER OUT Test	CH 1-3: Min CH4: Max OUTPUT SEL: A AUX IN: Min PHONES: Min EQ LOW/MID/HIGH: Center SHAPE: OFF MASTER: Max WOOFER OUT: Open TWEETER OUT: 8 Ω Dummy Load	STEREO LINK IN	2 kHz, -20 dBm, Sin	TWEETER OUT (8 Ω Dummy Load)	+3.5 dBm \pm 3.0 dB
EQ MAX Test	CH 1-3: Min CH4: Max OUTPUT SEL: A AUX IN: Min PHONES: Min EQ LOW/MID/HIGH: Max SHAPE: OFF MASTER: Max WOOFER OUT: 8 Ω Dummy Load TWEETER OUT: Open	STEREO LINK IN	100 Hz, -30 dBm, Sin	WOOFER OUT (8 Ω Dummy Load)	+21.5 dBm \pm 3.0 dB
			1 kHz, -30 dBm, Sin	WOOFER OUT (8 Ω Dummy Load)	+15.5 dBm \pm 3.0 dB
			10 kHz, -30 dBm, Sin	WOOFER OUT (8 Ω Dummy Load)	+30.5 dBm \pm 3.0 dB
EQ MIN Test	CH 1-3: Min CH4: Max OUTPUT SEL: A AUX IN: Max PHONES: Min EQ LOW/MID/HIGH: Min SHAPE: OFF MASTER: Max WOOFER OUT: 8 Ω Dummy Load TWEETER OUT: Open	STEREO LINK IN	100 Hz, -30 dBm, Sin	WOOFER OUT (8 Ω Dummy Load)	+0.5 dBm \pm 3.1 dB
			1 kHz, -30 dBm, Sin	WOOFER OUT (8 Ω Dummy Load)	-4.5 dBm \pm 3.1 dB
			10 kHz, -30 dBm, Sin	WOOFER OUT (8 Ω Dummy Load)	+1.5 dBm \pm 3.1 dB
SHAPE SW Test	CH 1-3: Min CH4: Max OUTPUT SEL: A AUX IN: Max PHONES: Min EQ LOW/MID/HIGH: enter SHAPE: ON MASTER: Max WOOFER OUT: 8 Ω Dummy Load TWEETER OUT: Open	STEREO LINK IN	10 kHz, -30 dBm, Sin	WOOFER OUT (8 Ω Dummy Load)	+22.3 dBm \pm 3.0 dB
SUB OUT Test	CH 1-3: Min CH4: Max OUTPUT SEL: A AUX IN: Max PHONES: Min EQ LOW/MID/HIGH: enter SHAPE: OFF MASTER: Max WOOFER OUT: Open TWEETER OUT: Open	CH4 L/MONO (CH4 R: Not Insert Plug)	1 kHz, -20 dBm, Sin	SUB OUT	+11.0 dBm \pm 3.0 dB

Circuit Board (Jack, Pre, PS1, Rotary SW Board)

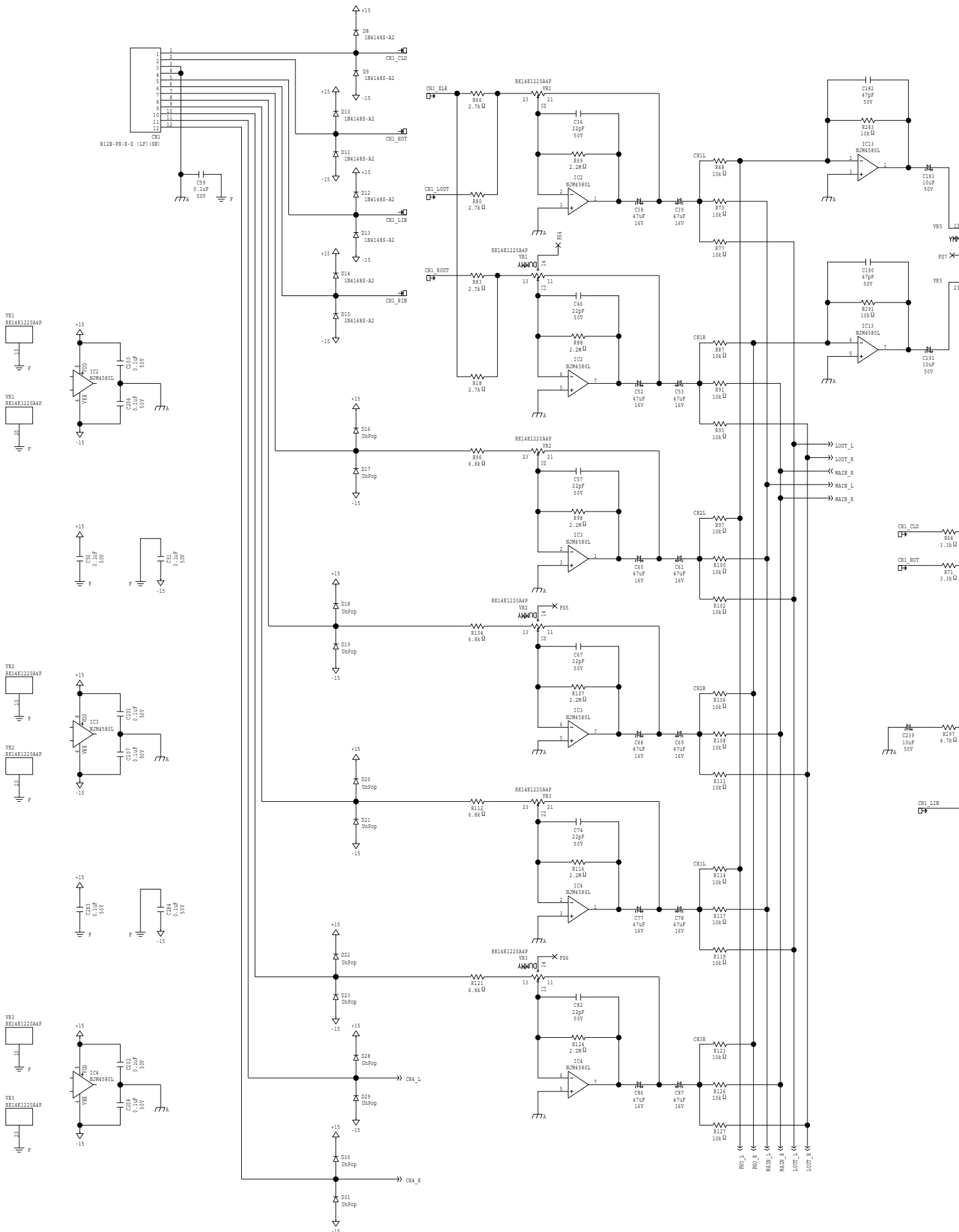


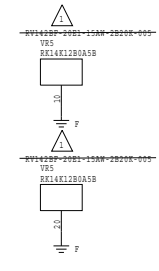
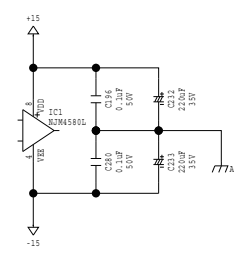
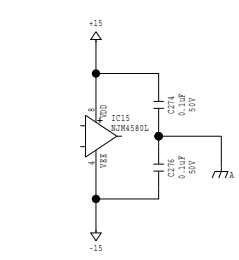
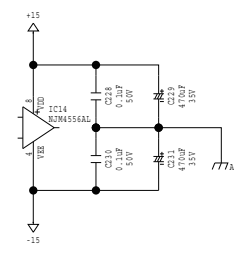
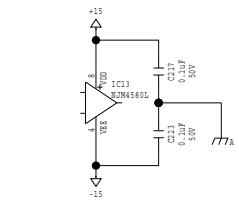
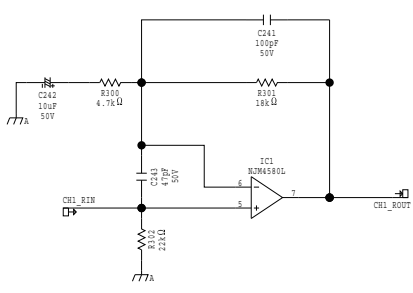
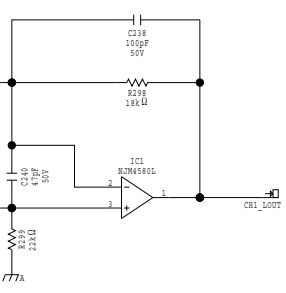
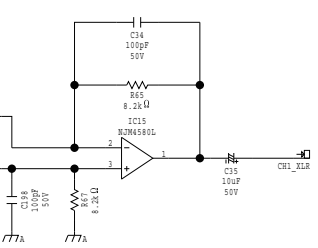
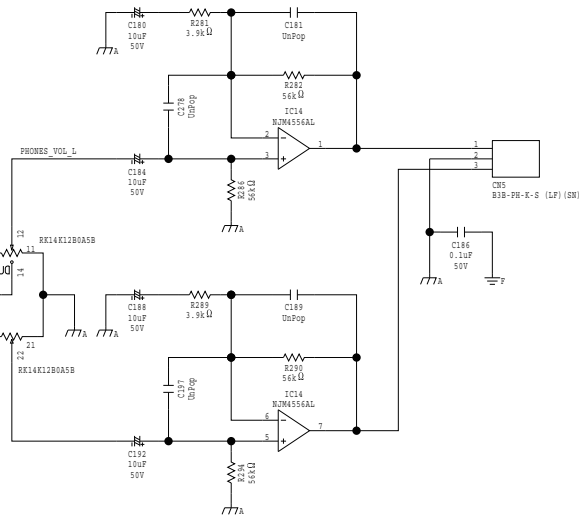
Circuit Diagram (Jack Board)



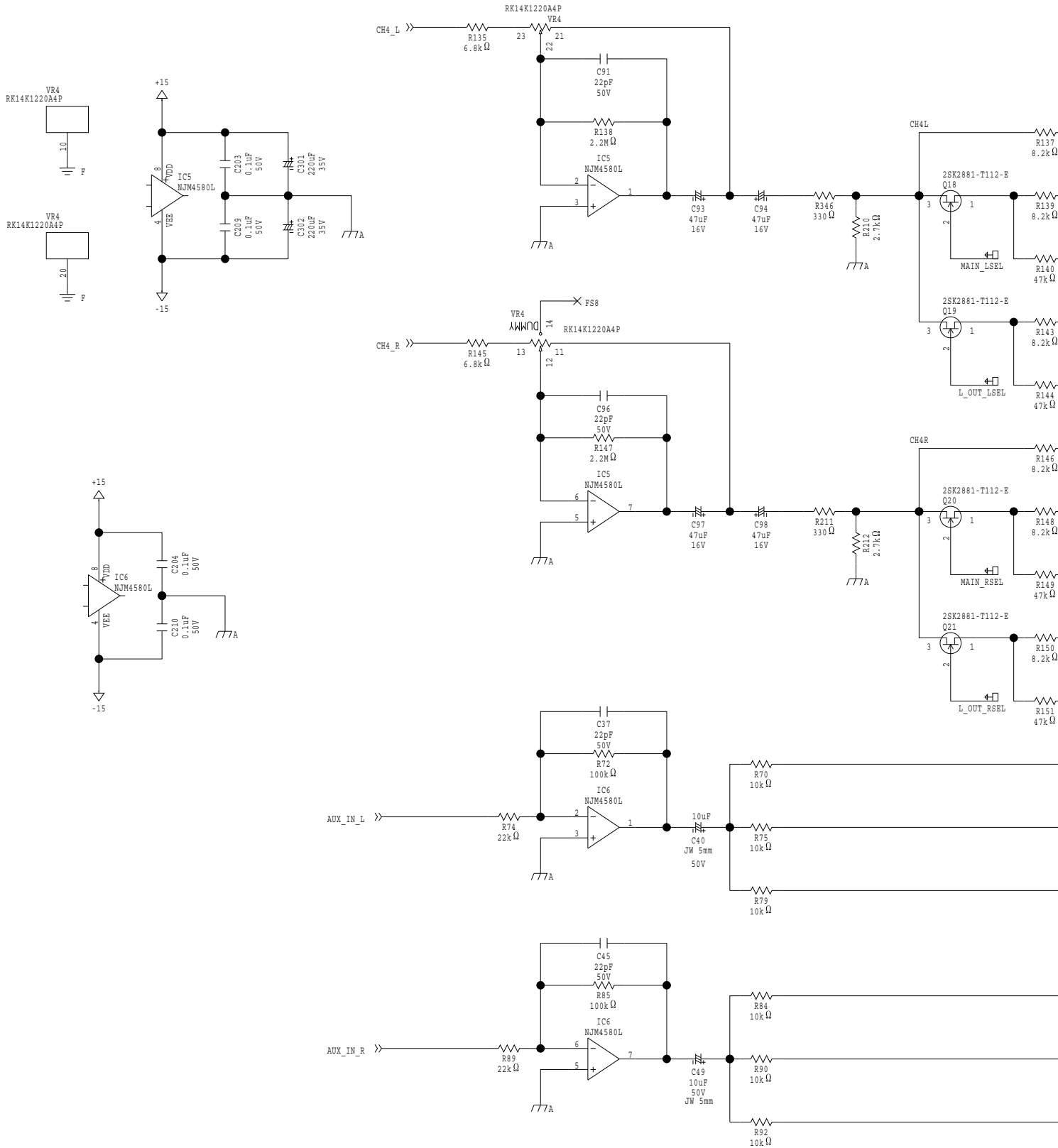


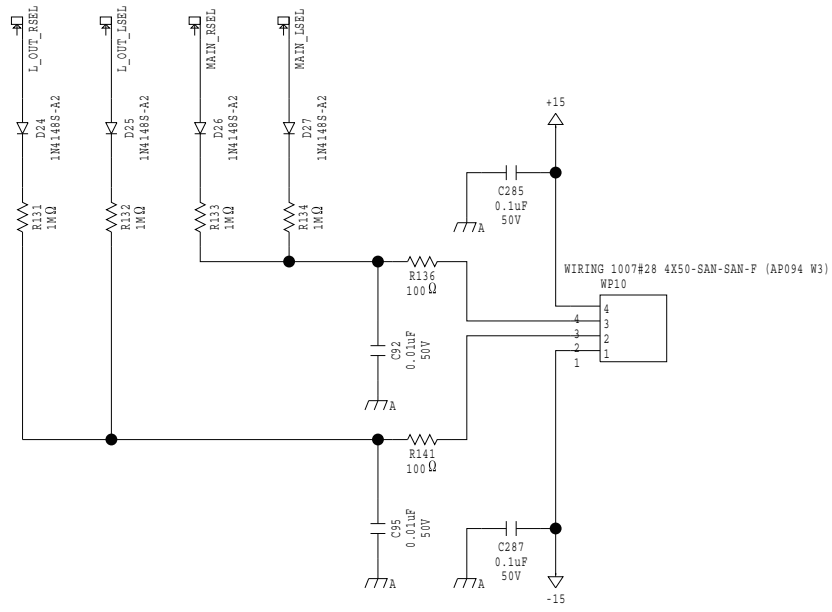
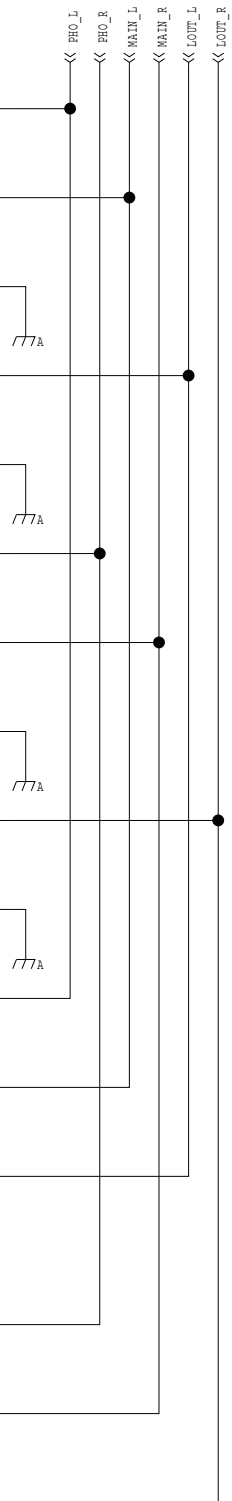
Circuit Diagram (Pre Board: 1/4)



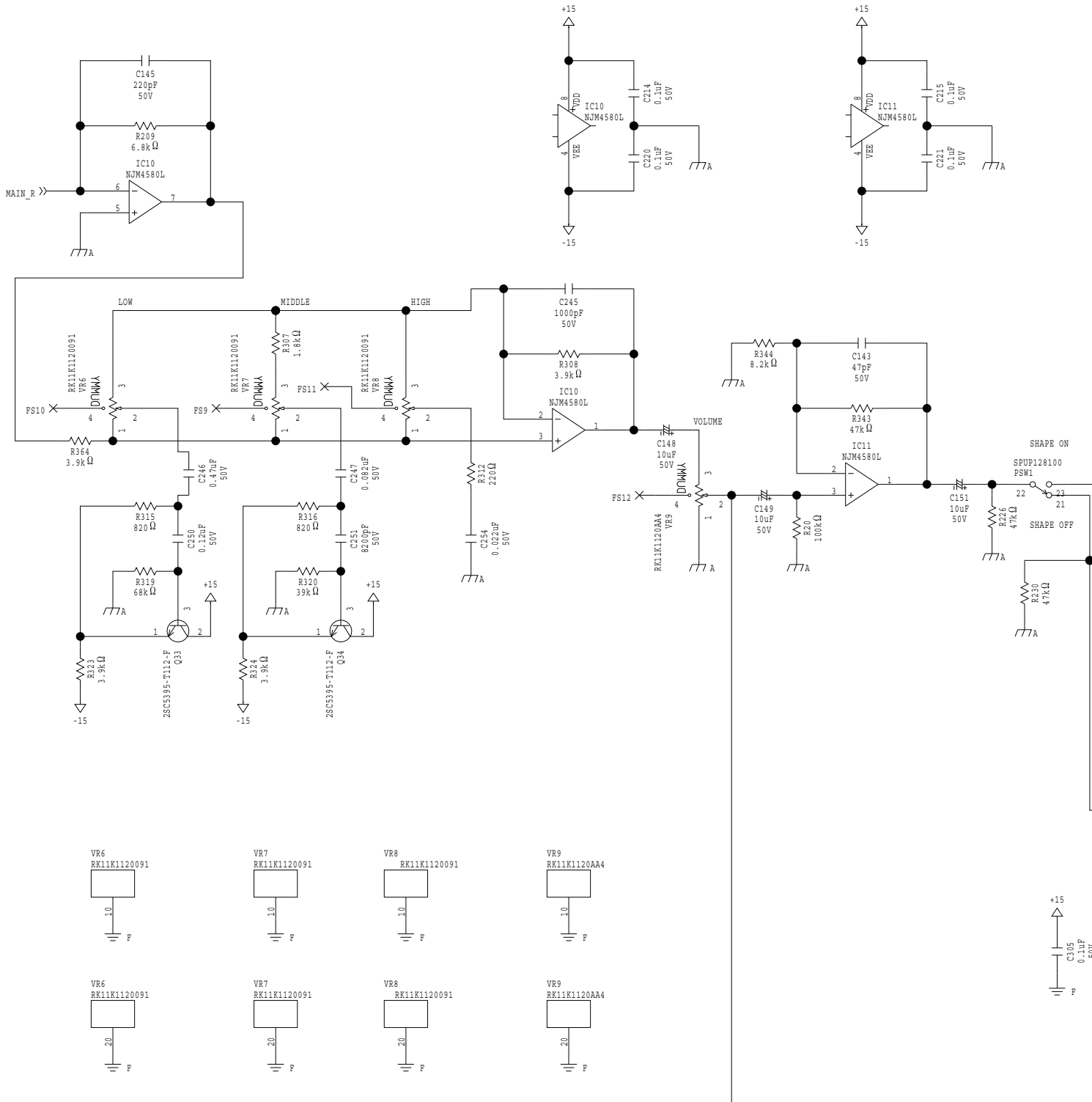


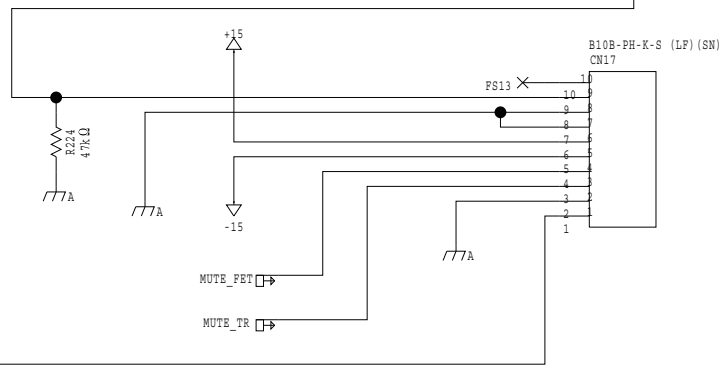
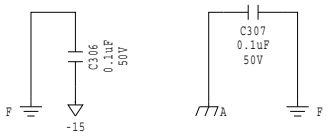
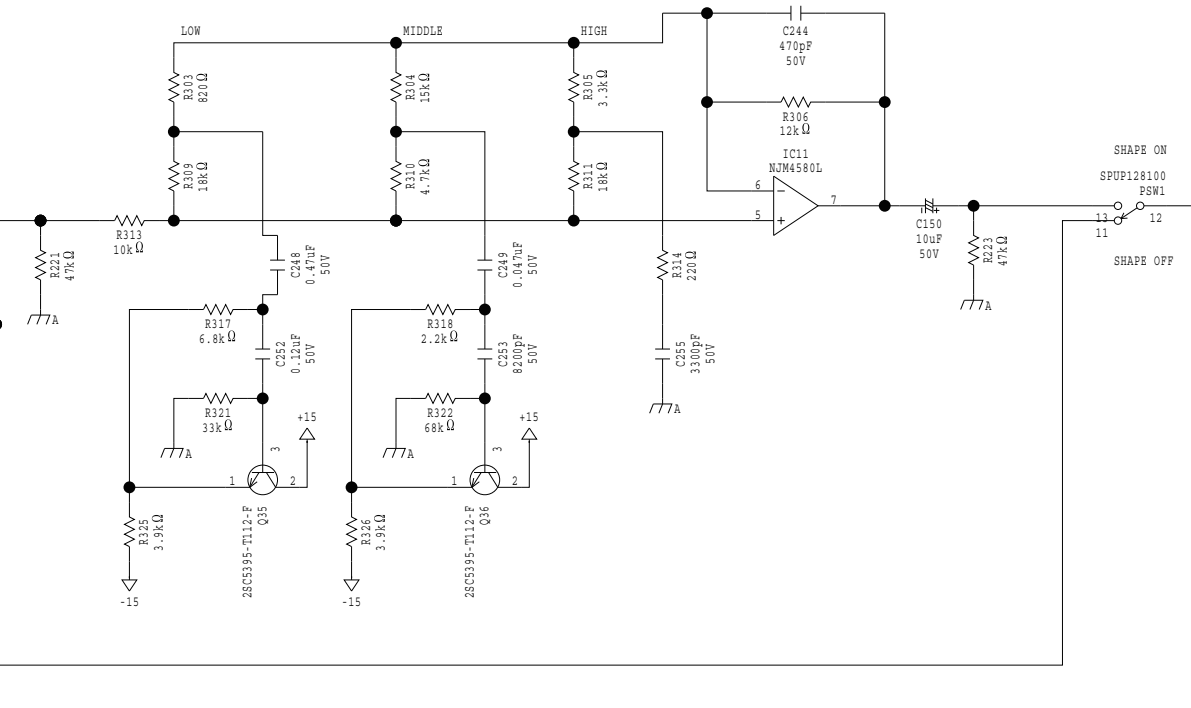
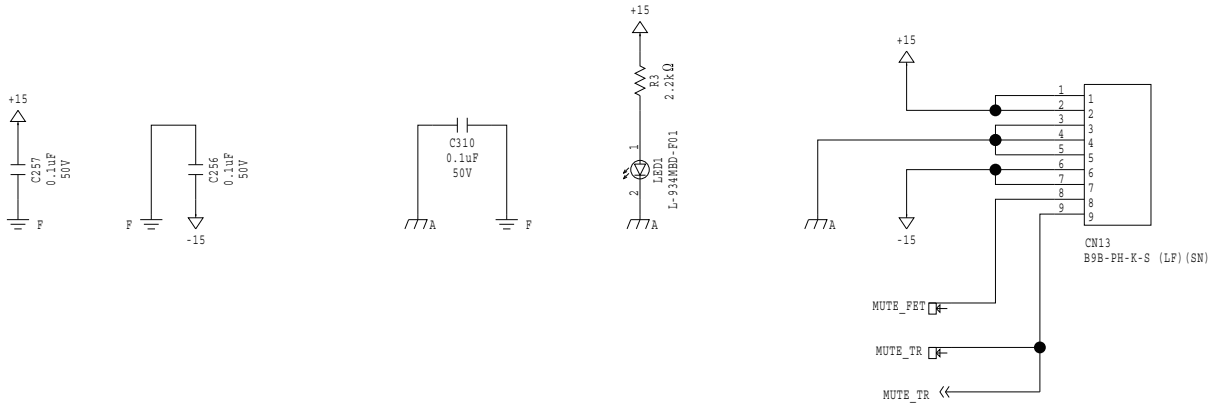
Circuit Diagram (Pre Board: 2/4)



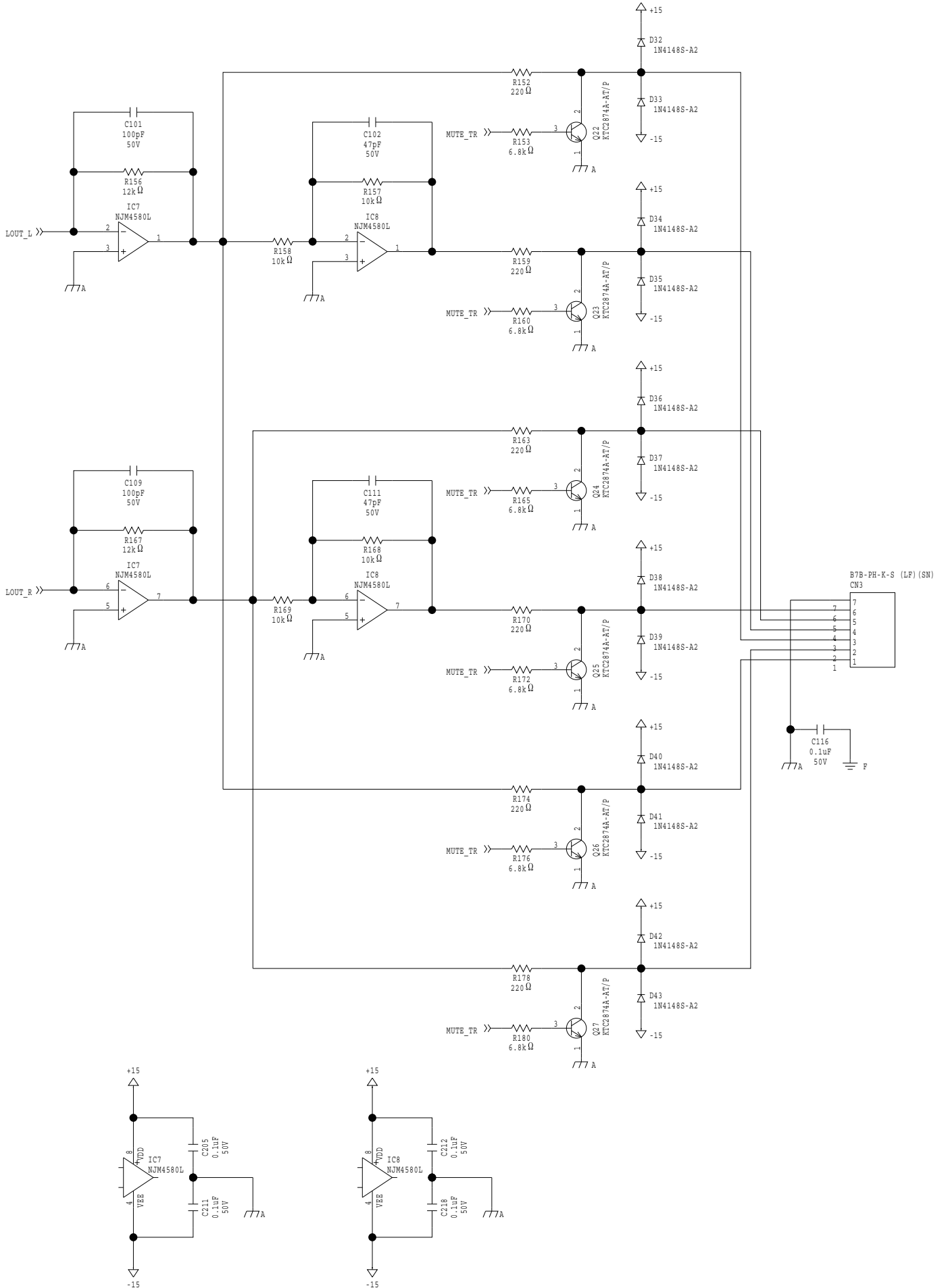


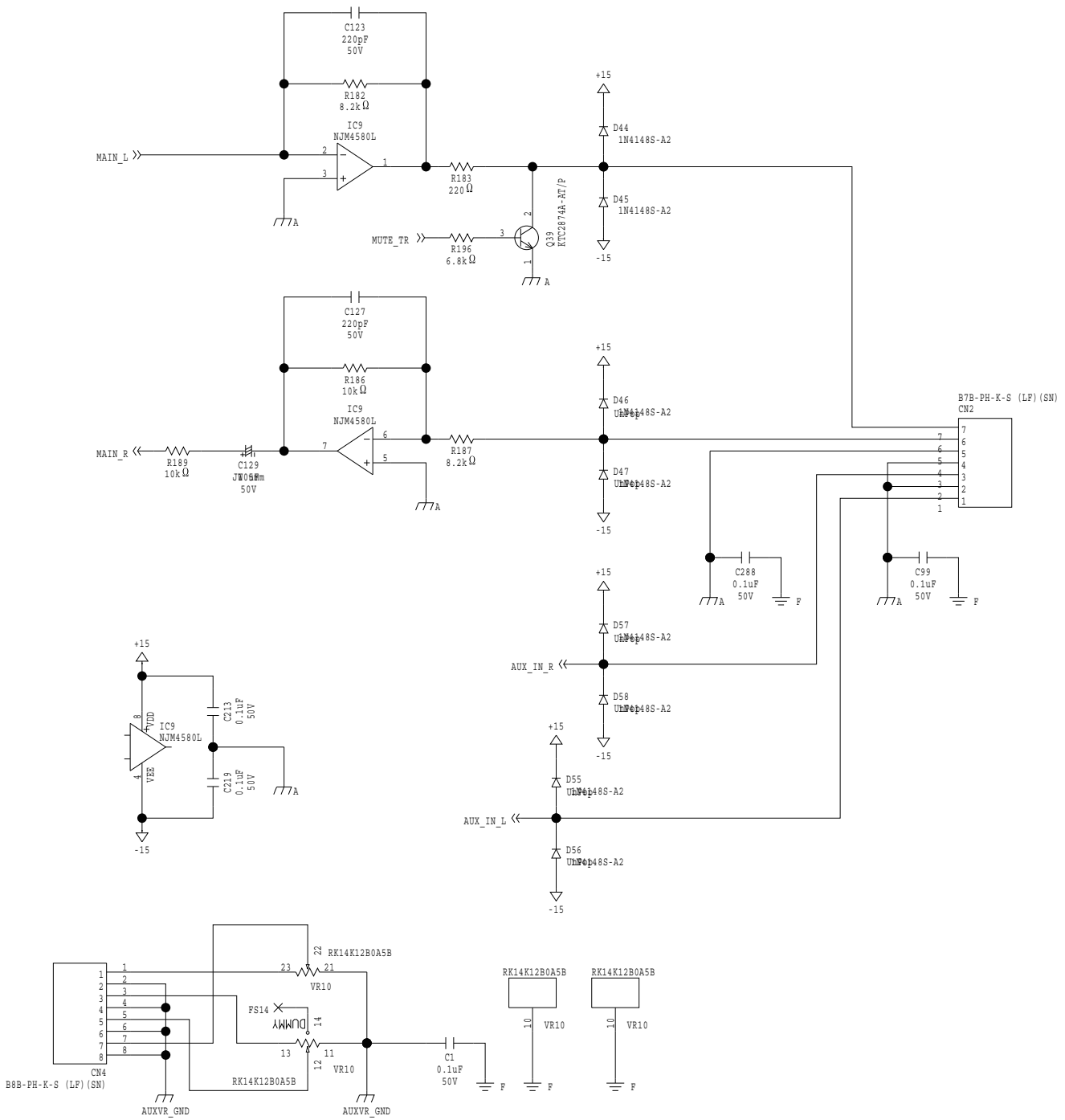
Circuit Diagram (Pre Board: 3/4)



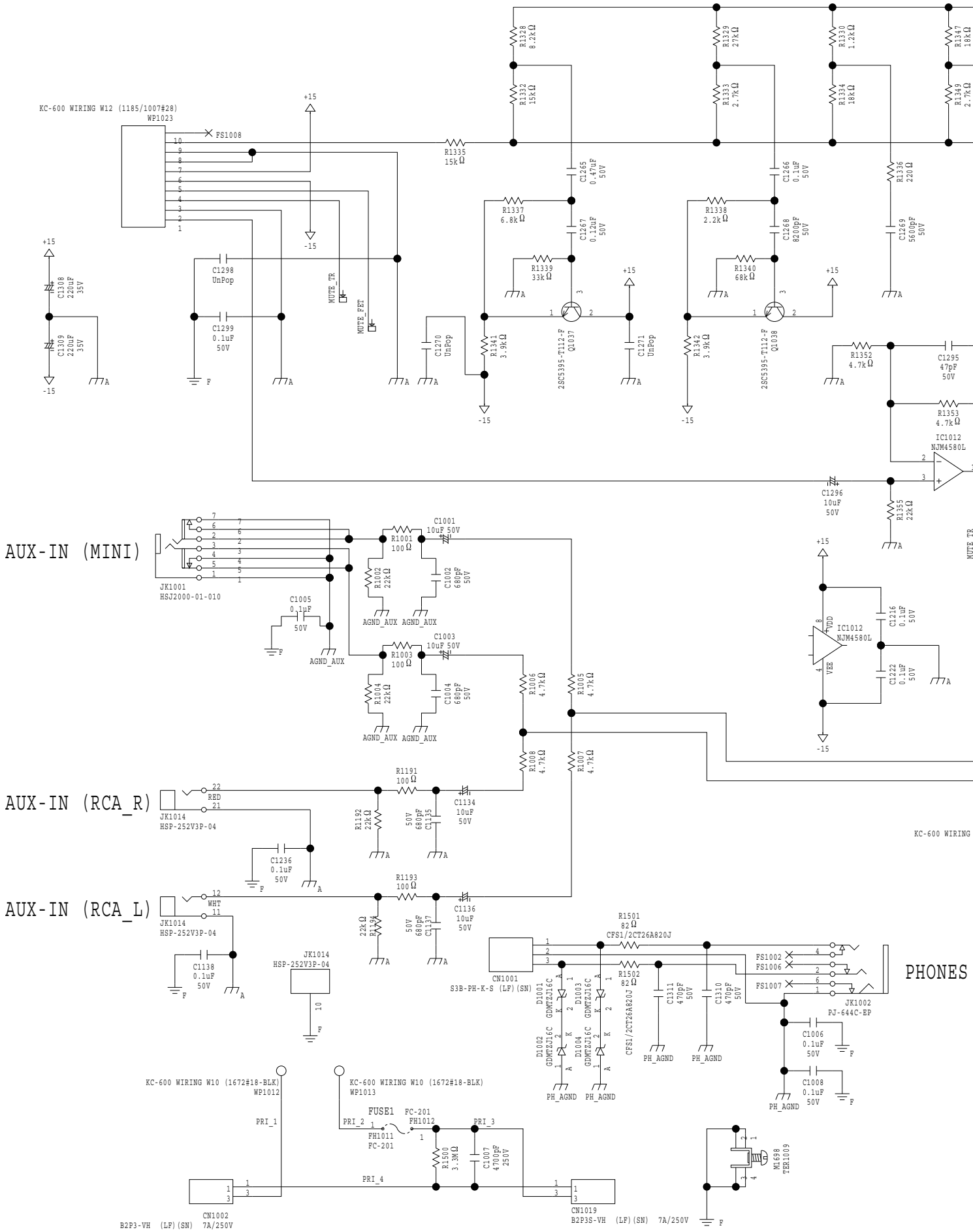


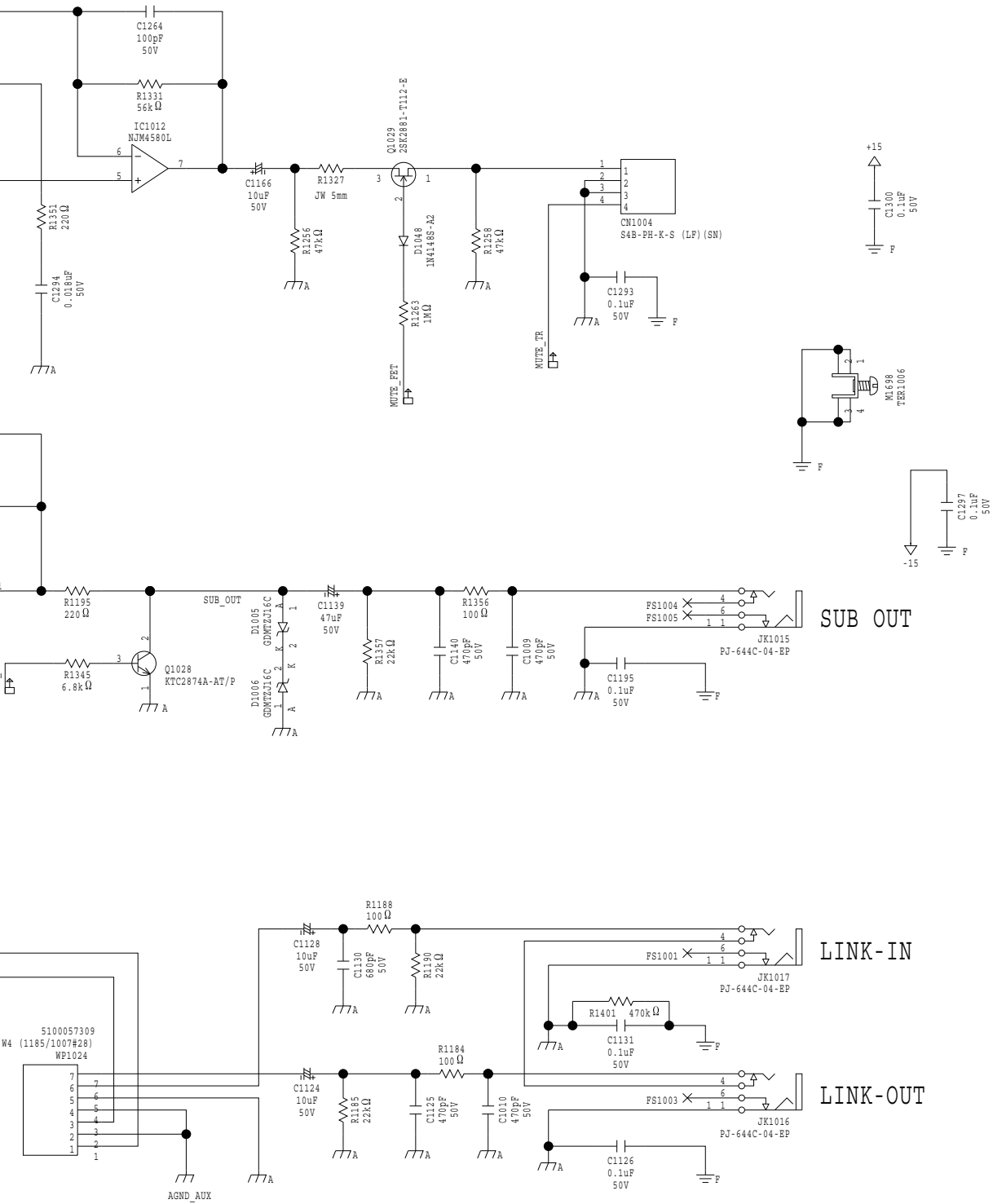
Circuit Diagram (Pre Board: 4/4)



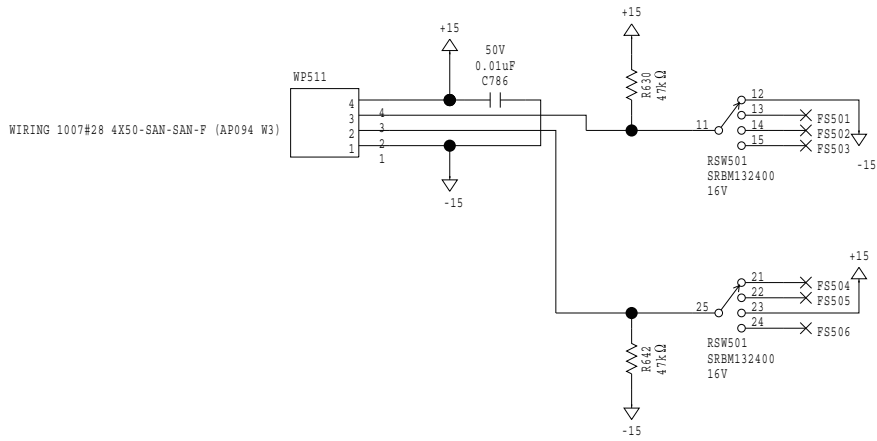


Circuit Diagram (PS1 Board)

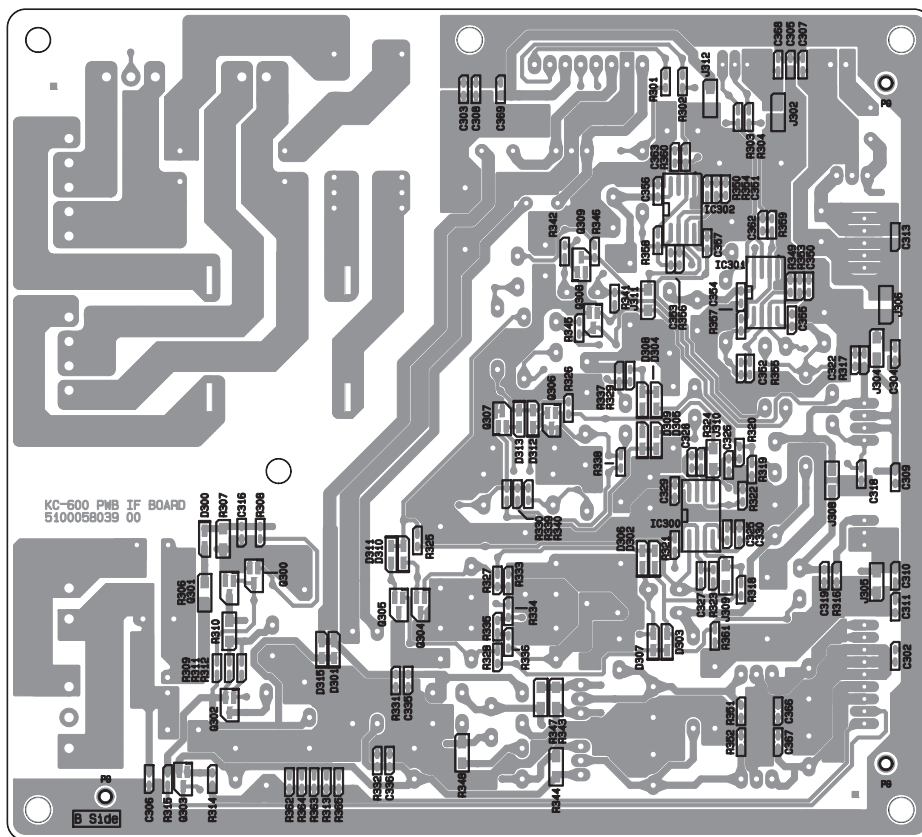
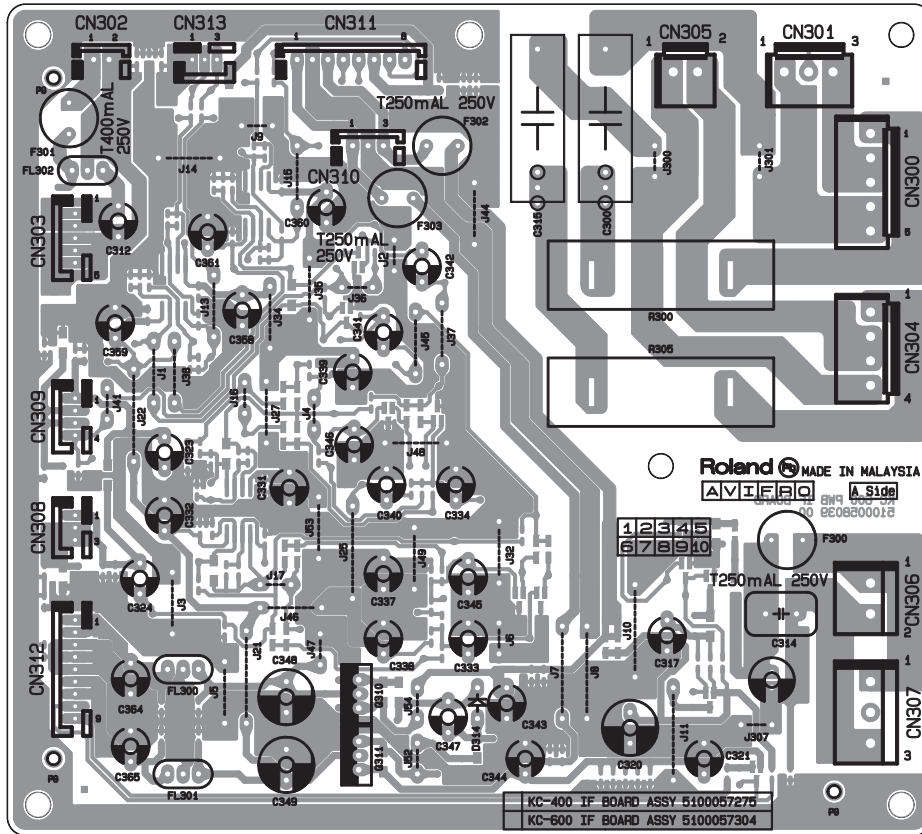




Circuit Diagram (Rotary SW Board)



Circuit Board (IF Board)



Circuit Diagram (IF Board)

