

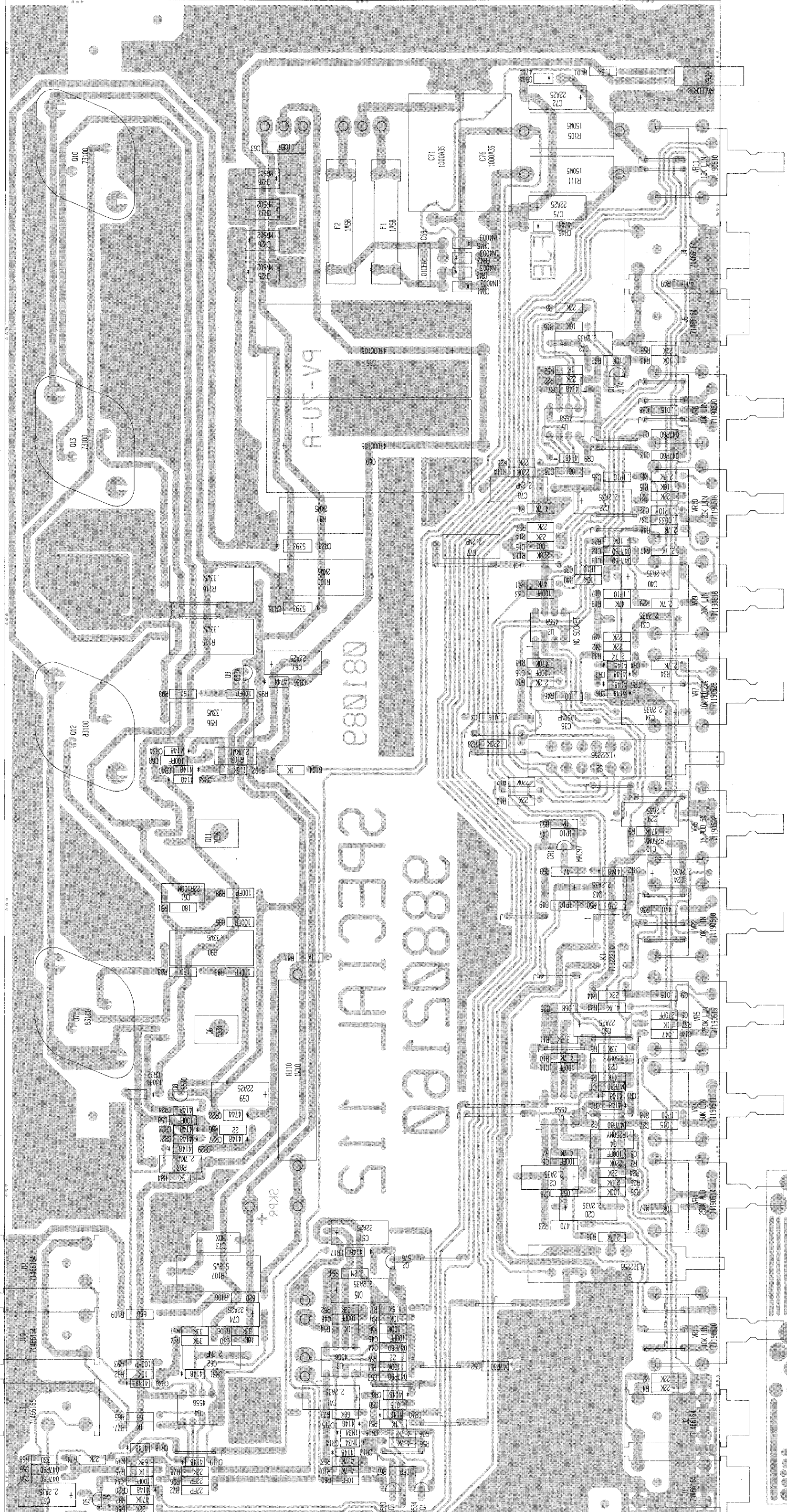
NOTES:
 ALL RESISTORS 1/4W UNLESS NOTED
 ALL RESISTORS IN OHMS UNLESS NOTED
 ALL POTS ARE LINEAR UNLESS NOTED
 ALL CAPS ARE POLYESTER UNLESS NOTED
 ALL DIODES 1N4148 UNLESS NOTED
 VOLTAGES MAY VARY FROM UNIT TO UNIT
 LAST REFERENCE DESIGNATOR USED:
 BUILT UNDER U.S. PATENT NO. 4,811,401
 CR46 R116 C78 G13 U5 S4 J25

SPECIAL 112 '89

BO. #98602180

PEAVEY ELECTRONICS CORP.	
DESIGNED BY	MS
DRAWN BY	FRH
C.B. CK.	DATE 10-11-87
CK. BY	John C. Johnson
APPR.	J. Ed

REMOTE SWITCH
PREAMP OUT
POWER AMP IN



HIGH GAIN
LOW GAIN
NORMAL GAIN
CHANNEL
PRE
BRIGHT
LON
MID
HIGH
PRESENCE
SUPERSAT
SHIFT GAIN
LEAD GAIN
POST
BOTTOM
BODY
EDGE
SEND
EFFECTS
RETURN
REVERB
LEVEL
POWER