
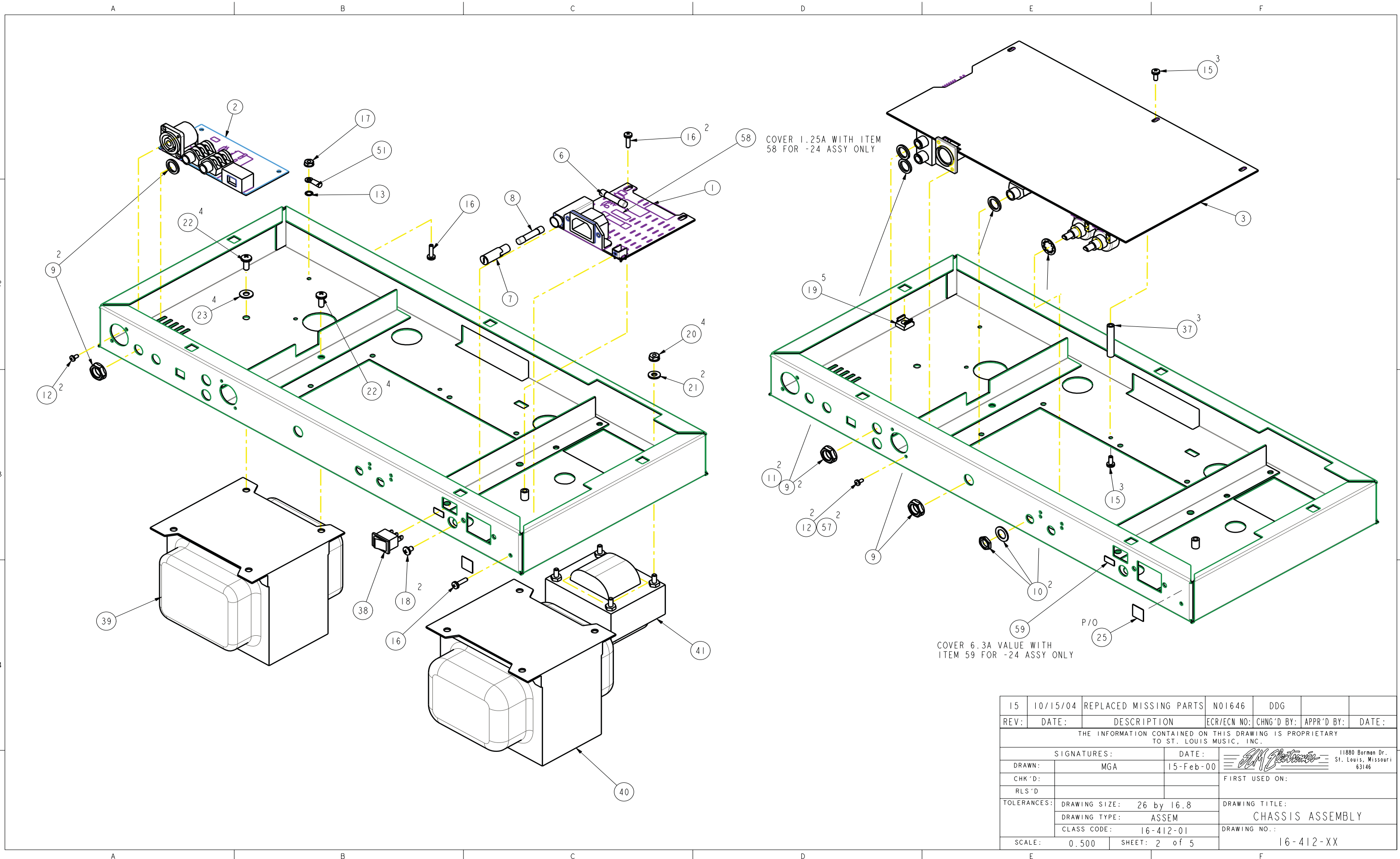

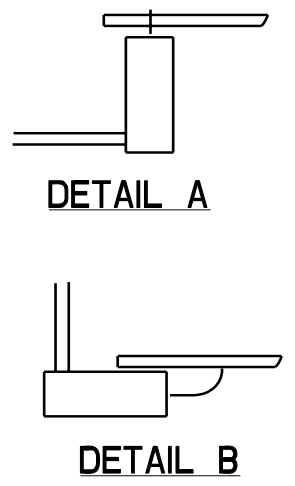
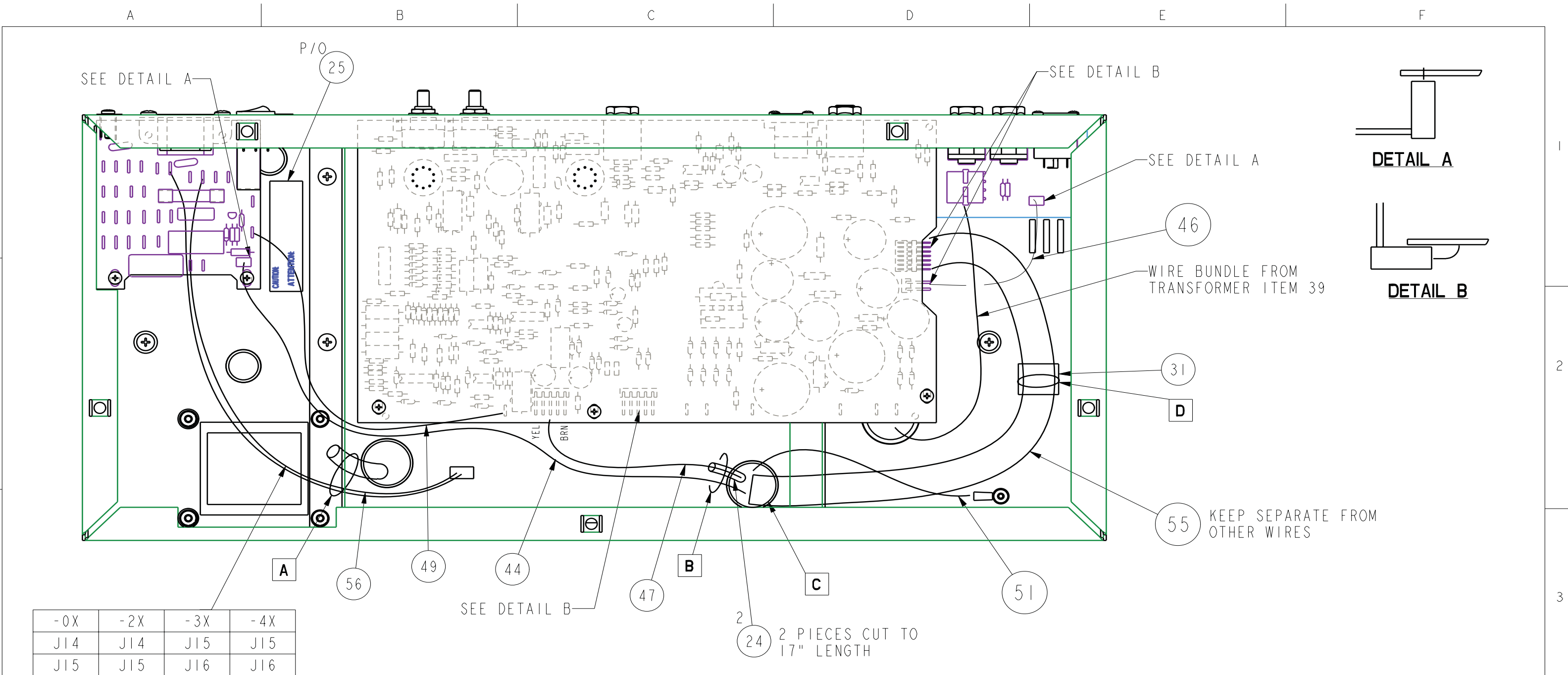


15	10/15/04	REPLACED MISSING PARTS	N01646	DDG		
14	08/20/02	ADDED FUSES & LABELS	N00913	JRC		
13	01/18/02	CHNG'D 47-000-02 TO P/O 47-000-01 ADDED 1 68-001-01	N00740	DDA		
12	02/21/00	REVISED AND REDRAWN AS	N00222	MGA		
11	09/15/98	SEE ECO FOR REV HISTORY AND AUTOMATE BOM	980531 980513	JRC		
10	07/27/98	REMOVED 30-013-01 ADDED 30-637-02	970504 980466	MAG		
9	03/16/98	ADDED 47-000-01 / DELETE ONE CABLE TIE MADE CHANGES PER MARKUP	980113	DDA		
8	01/05/98	ADDED 240V WIRING	970831	MAG		
7	09/16/97	CHGD QTY OF 81-404-01 FROM 1 TO 2 MOVED 47-000-02 TO OUTSIDE OF CHASSIS	970525	MAG		
6	07/08/97	CHANGED FUSE INFO	970341	DDA		
5	12/23/96	REV PER 950562	950562	LMA		
4	01/16/96	ADD PREP TO 230V WIRING	950271	DMM		
3	11/21/95	ADD 68-001-91 (CABLE TIE ANCHOR) 68-001-01 (CABLE TIE)	950379	DMM		
2	10/03/94	ADDED NOTE		GM		
1	04/13/94	CHANGED 15A FUSE TO 10A		GM		

REV:	DATE:	DESCRIPTION	ECR/ECN NO:	CHNG'D BY:	APPR'D BY:	DATE:
THE INFORMATION CONTAINED ON THIS DRAWING IS PROPRIETARY TO ST. LOUIS MUSIC, INC.						
SIGNATURES:		DATE:	 11880 Borman Dr. St. Louis, Missouri 63146			
DRAWN:	MGA	15-Feb-00	FIRST USED ON:			
CHK'D:						
RLS'D:						
TOLERANCES:	DRAWING SIZE: 26 by 16.8	DRAWING TITLE:		CHASSIS ASSEMBLY		
	DRAWING TYPE: ASSEM	DRAWING NO.:		16-412-XX		
	CLASS CODE: 16-412-01	SCALE: 0.400		SHEET: 1 of 5		




15	10/15/04	REPLACED MISSING PARTS	N01646	DDG		
REV:	DATE:	DESCRIPTION	ECR/ECN NO:	CHNG'D BY:	APPR'D BY:	DATE:
THE INFORMATION CONTAINED ON THIS DRAWING IS PROPRIETARY TO ST. LOUIS MUSIC, INC.						
SIGNATURES:			DATE:			
DRAWN:	MGA		15-Feb-00		11880 Borman Dr., St. Louis, Missouri 63146	
CHK'D:					FIRST USED ON:	
RLS'D:						
TOLERANCES:	DRAWING SIZE: 26 by 16.8			DRAWING TITLE:		
	DRAWING TYPE: ASSEM			CHASSIS ASSEMBLY		
	CLASS CODE: 16-412-01			DRAWING NO.:		
SCALE:	0.500	SHEET:	2 of 5	16-412-XX		



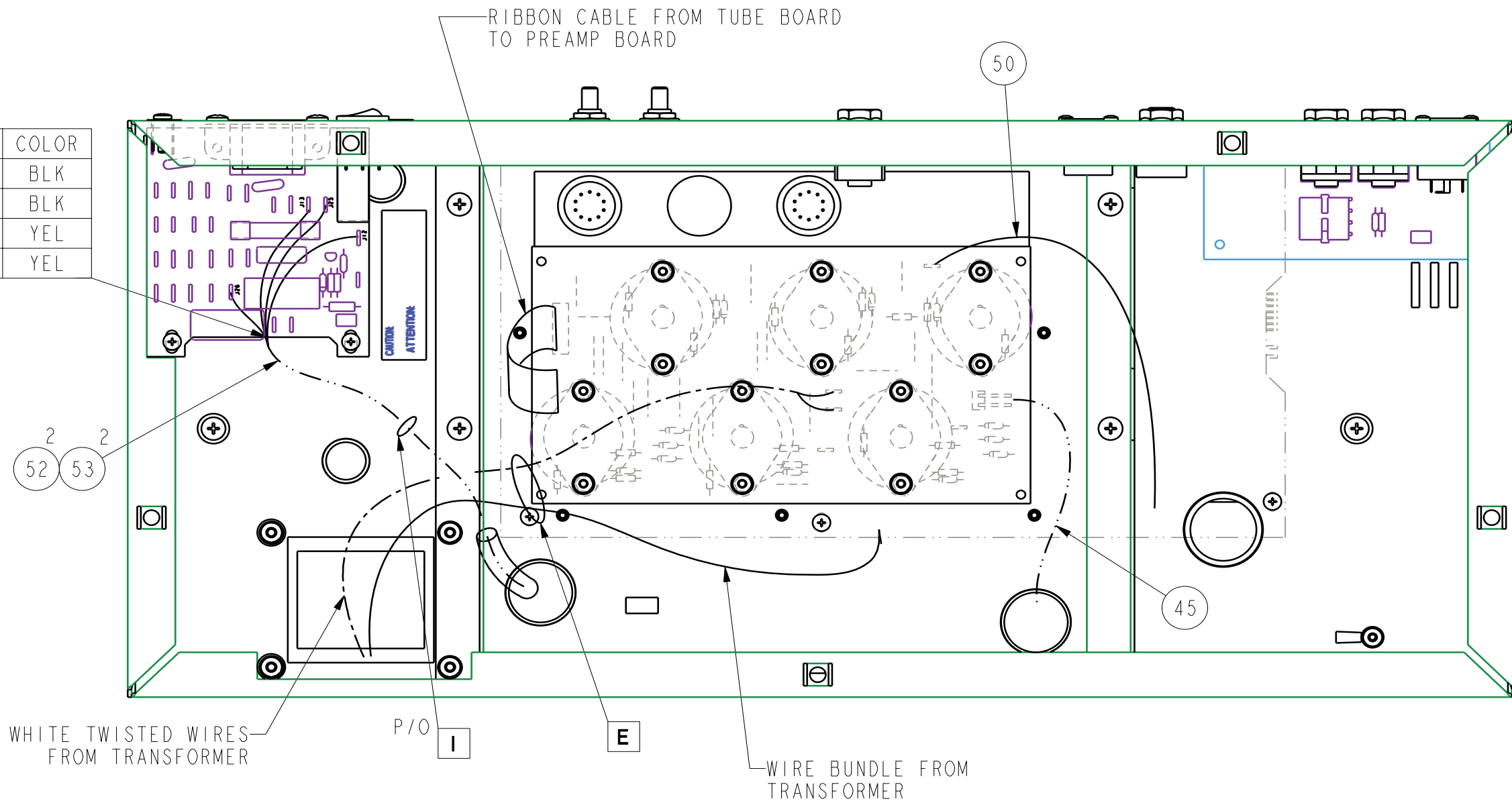
-0X	-2X	-3X	-4X
J14	J14	J15	J15
J15	J15	J16	J16

**WIRE TIE LOCATIONS**

- A) TIE FAN WIRES TO TUBING
- B) TIE TUBE TO SECONDARY WIRES
- C) TIE ALL WIRES AS THEY COME THRU GROMMET
- D) TIE RIBBON CABLE TO ADHESIVE WIRE TAB


15	10/15/04	REPLACED MISSING PARTS	N01646	DDG		
REV:	DATE:	DESCRIPTION	ECR/ECN NO:	CHNG'D BY:	APPR'D BY:	DATE:
THE INFORMATION CONTAINED ON THIS DRAWING IS PROPRIETARY TO ST. LOUIS MUSIC, INC.						
SIGNATURES:			DATE:		 11880 Borman Dr. St. Louis, Missouri 63146	
DRAWN:	MGA		18-Feb-00	FIRST USED ON:		
CHK'D:						
RLS'D:						
TOLERANCES:	DRAWING SIZE:	B		DRAWING TITLE:		
	DRAWING TYPE:	ASSEM		CHASSIS ASSEMBLY		
	CLASS CODE:			DRAWING NO.:		
SCALE:	0.500	SHEET:	3 of 5		16-412-XX	

J-NO	COLOR
J12	BLK
J13	BLK
J25	YEL
J26	YEL



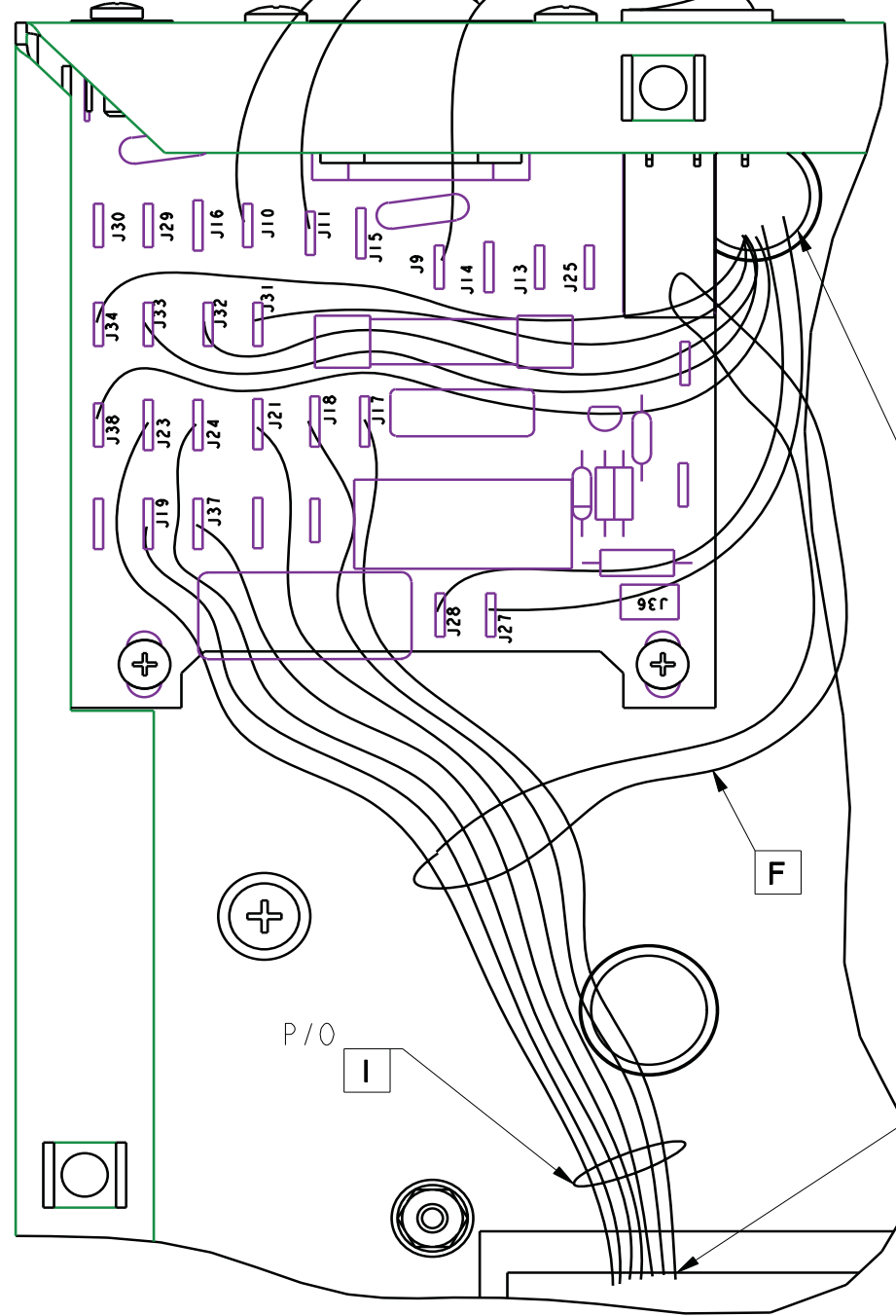
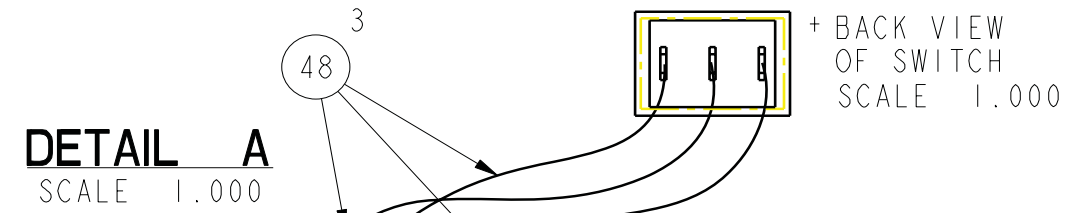
**WIRE TIE LOCATIONS**

- E) TIE SECONDARY WIRES AND PREPS TO HOLE IN PC BOARD
- I) TIE SWITCH WIRES TO PRIMARY WIRES

15	10/15/04	REPLACED MISSING PARTS	N01646	DDG		
REV:	DATE:	DESCRIPTION	ECR/ECN NO:	CHNG'D BY:	APPR'D BY:	DATE:
THE INFORMATION CONTAINED ON THIS DRAWING IS PROPRIETARY TO ST. LOUIS MUSIC, INC.						
SIGNATURES:			DATE:		 11880 Borman Dr. St. Louis, Missouri 63146	
DRAWN:	MGA		18-Feb-00	FIRST USED ON:		
CHK'D:						
RLS'D:						
TOLERANCES:	DRAWING SIZE:	B	DRAWING TITLE:		CHASSIS ASSEMBLY	
	DRAWING TYPE:	ASSEM	DRAWING NO.:		16-412-XX	
	CLASS CODE:					
SCALE:	0.500	SHEET:	4 of 5			

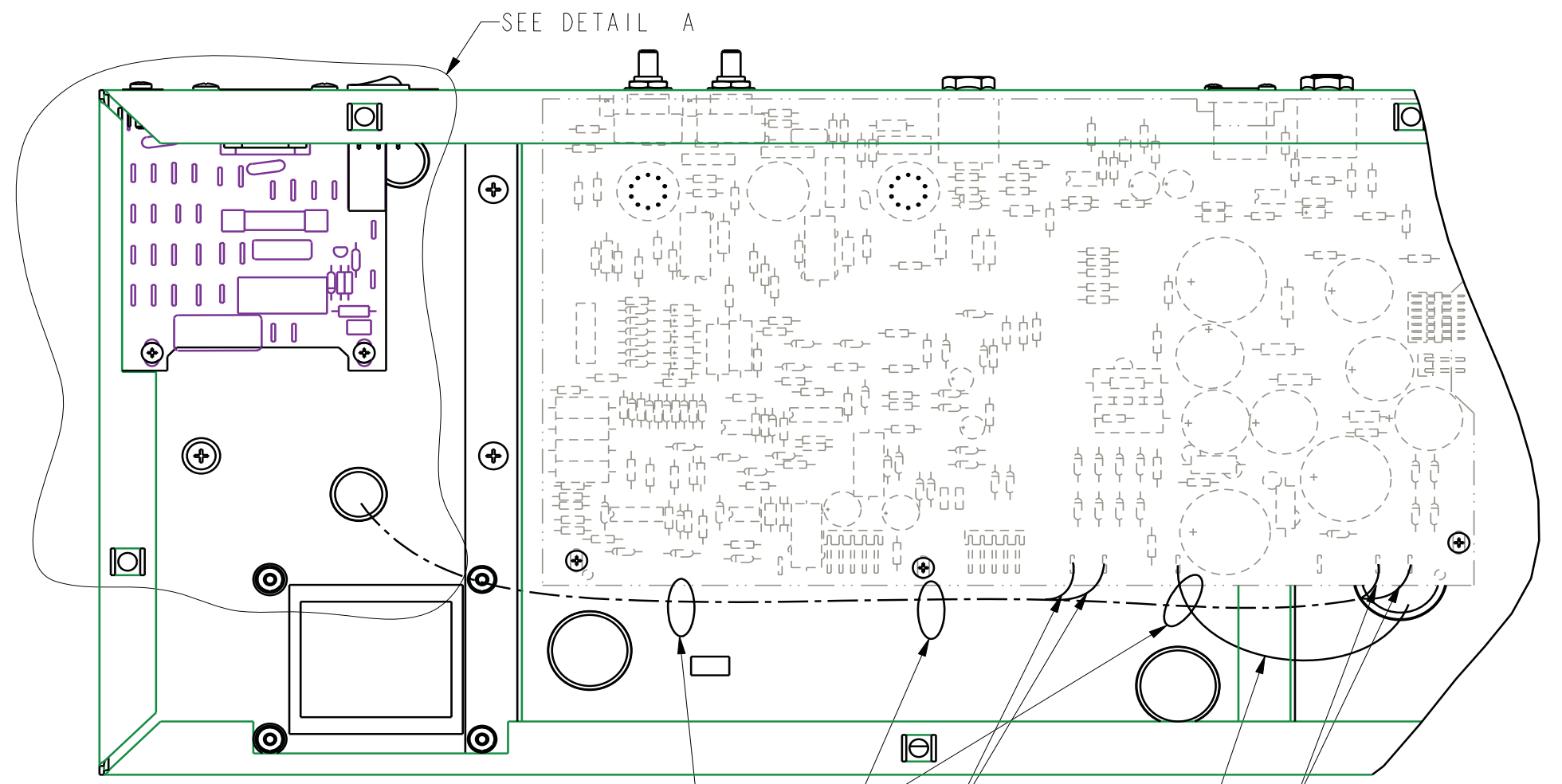
**WIRE TIE LOCATIONS**

- F) TIE PRIMARY WIRES AS SHOWN
- G) TIE ALL WIRES THAT ROUTE THRU THIS AREA
- H) TIE ALL WIRES THAT ROUTE THRU THIS AREA EXCEPT FAN WIRES



COLOR	-0X	-2X	-3X	-4X
BLK	J27	J33	J38	J27
BRN	J28	J34	J30	J30
WHT	J31	J31	J29	J29
BRN-WHT	J32	J32	J32	J32
BLU	J33	J27	J33	J33
GRY	J34	J28	J34	J34
BLU-WHT	J38	J38	J27	J38

COLOR	-0X	-2X	-3X	-4X
BLK	J17	J23	J37	J17
BRN	J18	J24	J20	J20
BLU-WHT	J37	J37	J17	J37
WHT	J21	J21	J19	J19
BLU	J23	J17	J23	J23
GRY	J24	J18	J24	J24
VIO	J22	J22	J22	J22



15	10/15/04	REPLACED MISSING PARTS	N01646	DDG		
REV:	DATE:	DESCRIPTION	ECR/ECN NO:	CHNG'D BY:	APPR'D BY:	DATE:
THE INFORMATION CONTAINED ON THIS DRAWING IS PROPRIETARY TO ST. LOUIS MUSIC, INC.						
SIGNATURES:			DATE:		11880 Borman Dr. St. Louis, Missouri 63146	
DRAWN:	MGA	18-Feb-00		FIRST USED ON:		
CHK'D:						
RLS'D:						
TOLERANCES:	DRAWING SIZE:	B		DRAWING TITLE:		
	DRAWING TYPE:	ASSEM		CHASSIS ASSEMBLY		
	CLASS CODE:			DRAWING NO.:		
SCALE:	0.500	SHEET:	5 of 5		16-412-XX	