

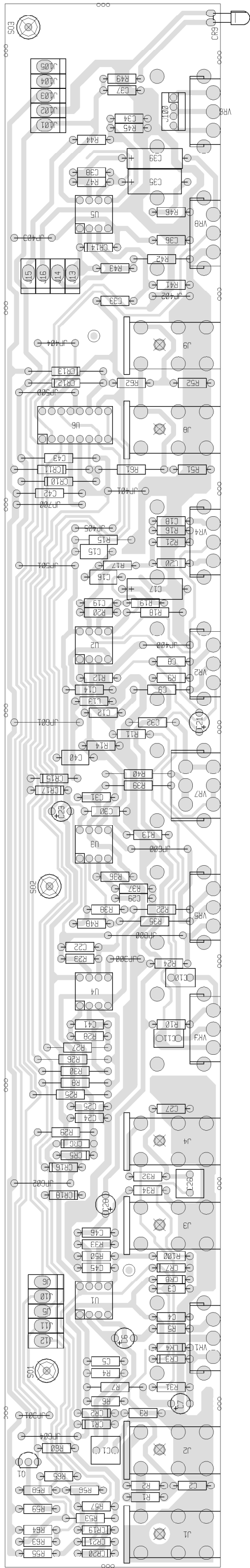
COPYRIGHT 2003 PEAVEY ELECTRONICS CORPORATION

"COMPANY PROPRIETARY INFORMATION"

PEAVEY ELECTRONICS CORP.  
711 A STREET  
MERIDIAN, MISSISSIPPI 39301

TITLE NASHVILLE 1000 PREAMP CB

SIZE	CODE	NUMBER	REV
C	JCF	72120054/99050950	A
PRINT			
DATE	6-MAR-2003		SHEET 1 OF 1



# Nashville 1000 PREAMP

BILL OF MATERIALS REPORT

BOARD NAME: NASHVILLE 1000      REPORT DATE: 3MAR03  
 ASSEMBLY LEVEL NUMBER: 99052503  
 PROJECT NUMBER: P9700089

CBDS

PART      PART      DESCRIPTION AND  
 \*\* QTY. NAME    VALUE    NUMBER    DEVICE DESIGNATIONS \*\*\*\*\*  
 \*\*\*\*\*

1	98852500	98852500	ECN20591	PCB
1	.0033	.0033	70340006	.0033MF---10%---50VDC---T/C---T&R C31
2	.0047	.0047	70340007	.0047MF---10%---50VDC---MON---T&R C8, C9
3	.015	.015	70340010	.015MF---10%---50VDC---T/C---T&R C18, C20, C33
1	.033	.033	70340014	.033MF---10%---50VDC---MON---T&R C32
2	.047M	.047M	70330136	.047M 5% 50vdc my T&A C10, C11
2	.047P80	.047P80	70340016	.047MF--+80-20%--50VDC---MON---T&R C36, C37
10	.1	.1	70340100	.1MF---180-20%--50VDC---AXL---T&R C3, C4, C13, C14, C24, C25, C29, C30, C42, C43
3	.1P10	.1P10	70340101	.1MF-----10%---50VDC---MON---T&R C15, C16, C40
2	.82M	.82M	70330122	.82mf 5% 50vdc my T&A C1, C26
2	1.5K	1.5K	70240018	1.5K--1/4W--5%---CF--T&R R16, R46
1	10	10	70240003	10---1/4W--5%---CF--T&R R56
2	100	100	70240010	100---1/4W--5%---CF--T&R R8, R65
5	100K	100K	70240034	100K--1/4W--5%---CF--T&R R28, R41, R45, R50, R100
9	100PF	100PF	70340054	100PF-----10%---50VDC---T/C---T&R C2, C5, C19, C22, C27, C34, C38, C41, C46

9 10K 10K 70240025 10K---1/4W--5%----CF--T&R  
 R6, R11, R14, R21, R24, R33, R34, R39,  
 R40

1 10KBVB 71190510 71190510 10K LIN MIN VPC W/BRACKET  
 VR8

1 10PF 10PF 70340050 10PF-----5%-----T/C----T&R  
 C45

1 1A50NP 1A50NP 70320138 1MFD 10% 50VNP EL T&R  
 C35

12 1K 1K 70240017 1K----1/4W--5%----CF--T&R  
 R9, R12, R29, R31, R32, R44, R53, R55,  
 R57, R60, R61, R62

2 1M 1M 70240039 1M----1/4W--5%----CF--T&R  
 R51, R52

20 1N4148 4148 70464148 1N4148 75V 10MA SILICON DIODE  
 CR1, CR2, CR3, CR4, CR5, CR6, CR7, CR8,  
 CR10, CR11, CR12, CR13, CR14, CR15,  
 CR16, CR17, CR18, CR19, CR20, CR21

2 2.2A35 2.2A35 70320200 2.2MFD 35VDC LY.CAP T&R  
 C17, C39

1 2.7K 2.7K 70240021 2.7K--1/4W--5%----CF--T&R  
 R7

2 22 22 70240007 22----1/4W--5%----CF--T&R  
 R25, R26

1 220K 220K 70240036 220K--1/4W--5%----CF--T&R  
 R3

14 22K 22K 70240029 22K---1/4W--5%----CF--T&R  
 R1, R22, R23, R27, R30, R35, R36, R37,  
 R38, R47, R48, R58, R63, R64

5 22R50 22R50 70320181 22MF-----20%----50VDC---EL--T&A  
 C6, C7, C21, C23, C28

1 270PF 270PF 70340057 270PF-----10%----50VDC---T/C----T&R  
 C12

1 2N3904 3904 70463904 3904/SPS7239 TO 92 NPN T&A  
 Q1

3 33K 33K 70240030 33K---1/4W--5%----CF--T&R  
 R4, R19, R20

4 4.7K 4.7K 70240023 4.7K--1/4W--5%----CF--T&R

R10, R13, R43, R59

5 4560 4560 70414560 4560 DUAL OP AMP IC  
U1, U2, U3, U4, U5

1 470 470 70240015 470---1/4W--5%----CF--T&R  
R5

1 47K 47K 70240031 47K---1/4W--5%----CF--T&R  
R2

1 4PHVL 4PHVL 73717015 4 PIN HEADER VERT. W/LOCK  
J100

3 500STW 70901859 70901859 SPCR,R,TA-40X1/2,SW,AL,ST  
SO1, SO2, SO3

4 50KBVB 71190511 71190511 50K LIN MIN VPC W/BRACKET  
VR2, VR3, VR4, VR5

3 68K 68K 70240032 68K---1/4W--5%----CF--T&R  
R15, R17, R18

1 820 820 70240019 820---1/4W--5%----CF--T&R  
R49

1 DG211 DG211 70420211 DG211 C.J.I.C.  
U6

2 J325 J 70600005 22GA JUMPER WIRES T&R  
JP300, JP301,

6 J4 J 70600005 22GA JUMPER WIRES T&R  
JP400, JP401, JP402, JP403, JP404,  
JP405,

2 J5 J 70600005 22GA JUMPER WIRES T&R  
JP500, JP501,

4 J6 J 70600005 22GA JUMPER WIRES T&R  
JP600, JP601, JP602, JP604,

1 J7 J 70600005 22GA JUMPER WIRES T&R  
JP700,

1 J8 J 70600005 22GA JUMPER WIRES T&R  
JP800,

2 POT0510 71190510 71190510 10K LIN.MIN.VPC W/BRACKET  
VR1, VR6

1 POT0531 71190531 71190531 100KC/100KC DUAL MIN VPC

VR7

1 RALEDRSL RALEDRSL 70450053 LED, T-1, RED, W/STOPPER LEAD T&A

CR9

6 RASN6165 71466165 71466165 JK R/A 12.5MM NIN STEREO -88

J1, J2, J3, J4, J8, J9

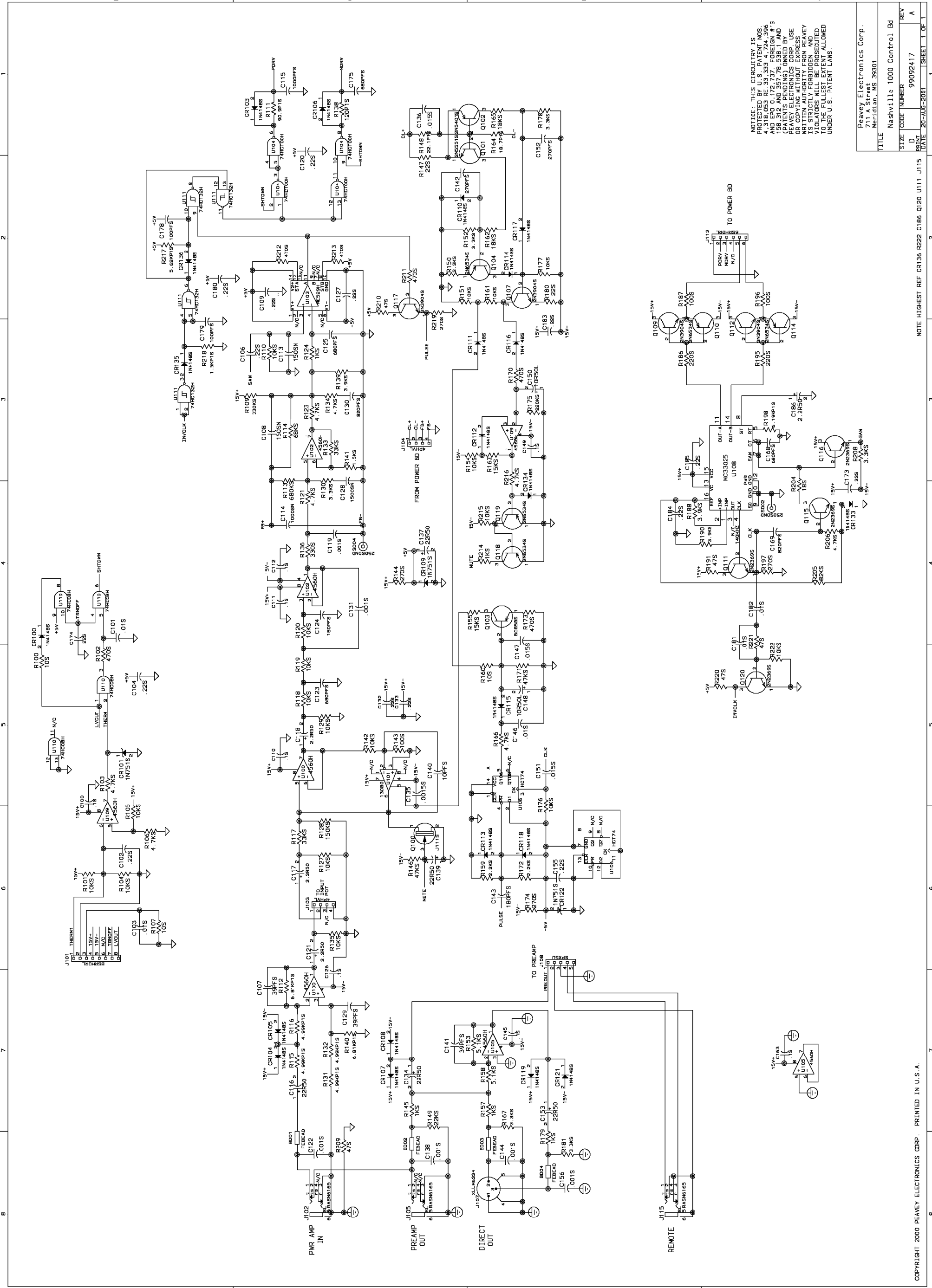
4 SPX1D SPX1D 73717003 1 STAKE PIN

J13, J14, J15, J16

10 SPX1U SPX1U 73717003 1 STAKE PIN

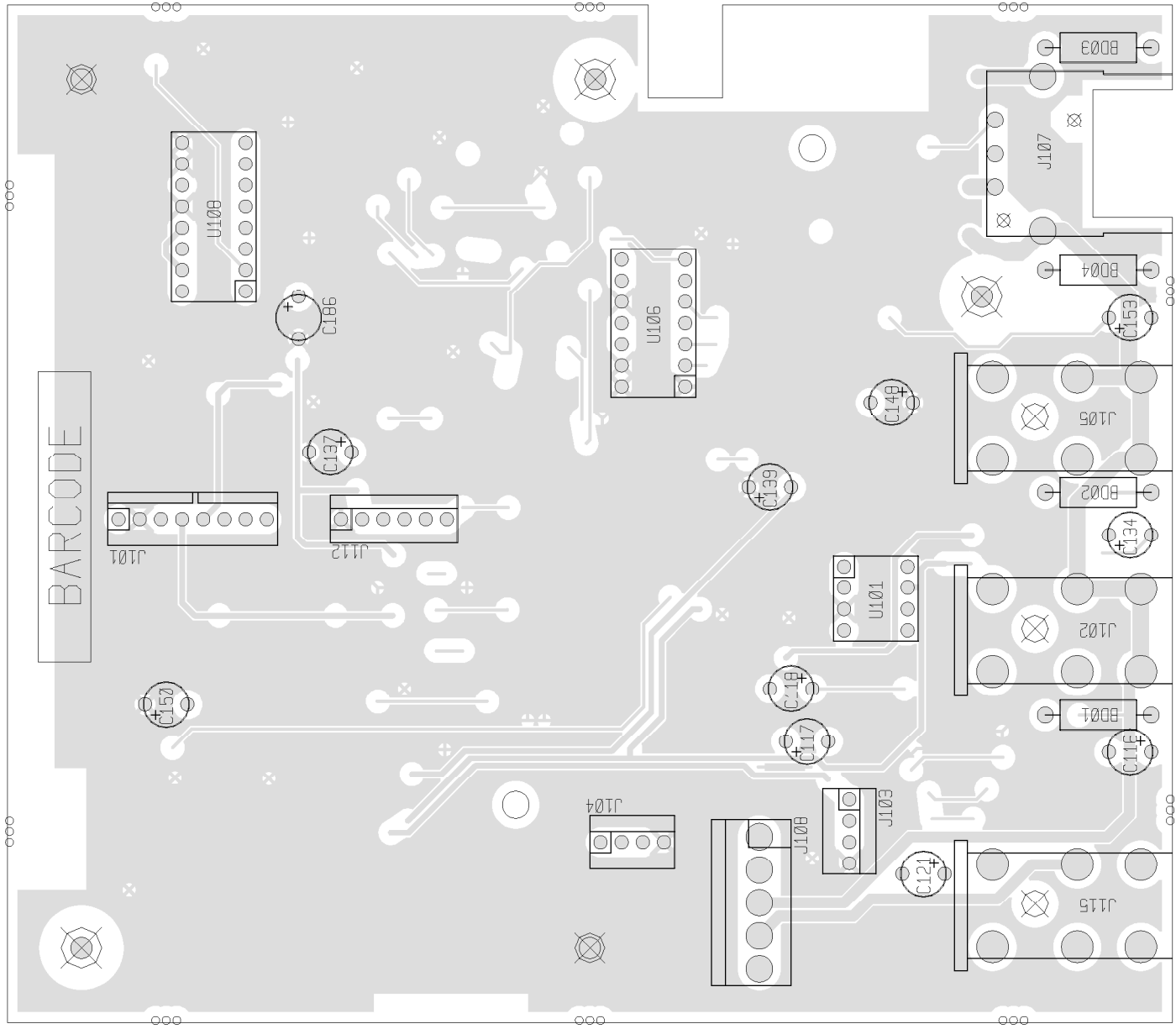
J5, J6, J10, J11, J12, J101, J102, J103,  
J104, J105

\*\*\*\*\*  
\* END OF BILL OF MATERIALS REPORT \*  
\*\*\*\*\*

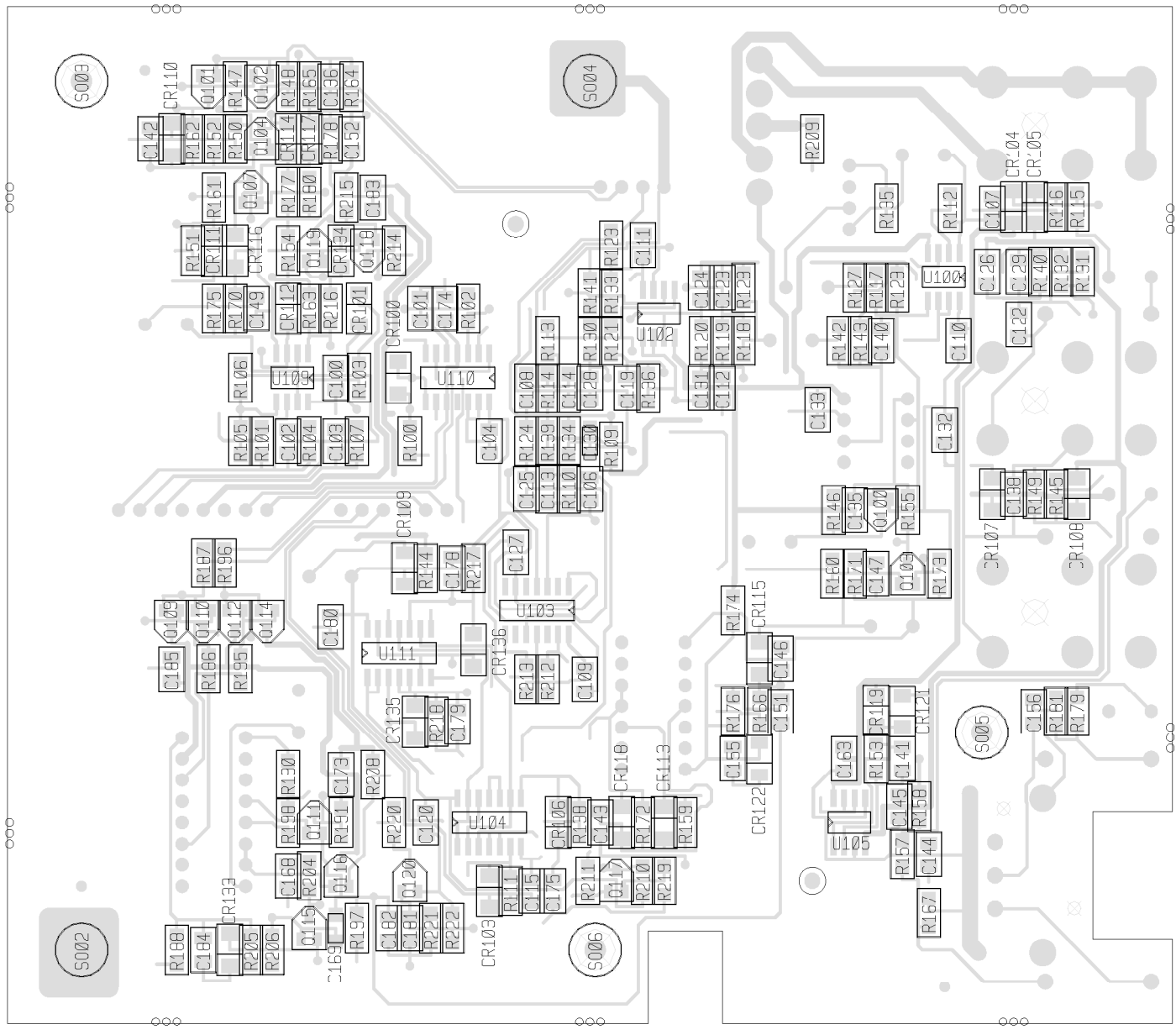


NOTICE: THIS CIRCUITRY IS PROTECTED BY U.S. PATENT NOS. 4,318,053 RE. 33,333 4,724,396 AND EPO 0,172,737. FOREIGN #S 1,387,845 1,387,846 1,387,847 1,387,848 1,387,849 1,387,850 1,387,851 1,387,852 1,387,853 1,387,854 1,387,855 1,387,856 1,387,857 1,387,858 1,387,859 1,387,860 1,387,861 1,387,862 1,387,863 1,387,864 1,387,865 1,387,866 1,387,867 1,387,868 1,387,869 1,387,870 1,387,871 1,387,872 1,387,873 1,387,874 1,387,875 1,387,876 1,387,877 1,387,878 1,387,879 1,387,880 1,387,881 1,387,882 1,387,883 1,387,884 1,387,885 1,387,886 1,387,887 1,387,888 1,387,889 1,387,890 1,387,891 1,387,892 1,387,893 1,387,894 1,387,895 1,387,896 1,387,897 1,387,898 1,387,899 1,387,900 1,387,901 1,387,902 1,387,903 1,387,904 1,387,905 1,387,906 1,387,907 1,387,908 1,387,909 1,387,910 1,387,911 1,387,912 1,387,913 1,387,914 1,387,915 1,387,916 1,387,917 1,387,918 1,387,919 1,387,920 1,387,921 1,387,922 1,387,923 1,387,924 1,387,925 1,387,926 1,387,927 1,387,928 1,387,929 1,387,930 1,387,931 1,387,932 1,387,933 1,387,934 1,387,935 1,387,936 1,387,937 1,387,938 1,387,939 1,387,940 1,387,941 1,387,942 1,387,943 1,387,944 1,387,945 1,387,946 1,387,947 1,387,948 1,387,949 1,387,950 1,387,951 1,387,952 1,387,953 1,387,954 1,387,955 1,387,956 1,387,957 1,387,958 1,387,959 1,387,960 1,387,961 1,387,962 1,387,963 1,387,964 1,387,965 1,387,966 1,387,967 1,387,968 1,387,969 1,387,970 1,387,971 1,387,972 1,387,973 1,387,974 1,387,975 1,387,976 1,387,977 1,387,978 1,387,979 1,387,980 1,387,981 1,387,982 1,387,983 1,387,984 1,387,985 1,387,986 1,387,987 1,387,988 1,387,989 1,387,990 1,387,991 1,387,992 1,387,993 1,387,994 1,387,995 1,387,996 1,387,997 1,387,998 1,387,999 1,387,1000

Peavey Electronics Corp. 711 A Street Meridian, MS 39301	
TITLE	Nashville 1000 Control Bd
SIZE	D
CODE	NUMBER
REV	99092417
DATE	20-AUG-2001
SHEET 1 OF 1	



component-side



secondary-side

# NASHVILLE 1000 CONTROL BOARD



BILL OF MATERIALS REPORT

BOARD NAME: NASHIKIN      REPORT DATE: 15MAR00  
 ASSEMBLY LEVEL NUMBER: 99092417  
 PROJECT NUMBER: P9700089

CBDS

PART      PART      DESCRIPTION AND  
 \*\* QTY. NAME    VALUE    NUMBER    DEVICE DESIGNATIONS \*\*\*\*\*  
 \*\*\*\*\*

1	72100590	72100590	ECN19551	PCB
1	.0015S	.0015	70300037	.0015MF X7R 50V 10% SMT 1206 C135
6	.001S	.001	70300036	.001MF X7R 50V 10% SMT 1206 C119, C122, C131, C138, C144, C156
3	.015S	.015	70300024	.015UF--SURFACE MNT--1206 PACK C136, C147, C151
5	.01S	.01	70300023	.01MF X7R 50V 10% SMT 1206 C101, C103, C146, C181, C182
8	.1S	.1	70300035	.1MF Z5U 50V 20% SMT 1206 C100, C110, C111, C112, C126, C145, C149, C163
15	.22S	.22	70300069	.22MF-X7R-25V-10%-SMT C102, C104, C106, C109, C120, C127, C132, C133, C155, C173, C174, C180, C183, C184, C185
1	1.5KP1S	1.5KP1	70200128	1.5K--1/8W--1%--SMT1206 R218
1	1.5KS	1.5K	70200020	1.5K--1/8W--5%---smt R141
1	1000PFS	1000PF	70300014	1000PF COG 50V 5% SMT 1206 C115
1	1000SN	1000N	70300067	1000PF-NPO-100V-5%-SMT C114
2	100PFS	100PF	70300044	100PF COG 50V 5% SMT 1206 C178, C179
3	100S	100	70200013	100---1/8w--5%---smt R143, R187, R196
18	10KS	10K	70200028	10K--1/8W--5%---SMT R101, R104, R105, R110, R118, R119, R120, R127, R129, R135, R142, R151, R154, R161, R176, R177, R215, R222
1	10PFS	10PF	70300010	10PF COG 50V 5% SMT 1206

C140

2 10R50L 10R50L 70320185 10MF-----20%---50VDC---LL--T&A  
C148, C150

3 10S 10 70200011 10---1/8w--5%---smt  
R100, R107, R160

1 120P1S 120P1 70200076 120---1/8w--1%---SMT 1206  
R138

1 13080 13080 70413080 LM3080N CUSTOM SELECTED  
U101

1 1500SN 1500N 70300072 1500PF-NPO-50V-5%-SMT  
C128

1 150KS 150K 70200109 150K-1/8W--5%---SM  
R128

2 150SN 150N 70300065 150PF-NPO-50V-5%-SMT  
C108, C113

2 15KS 15K 70200080 15K--1/8W--5%---SM  
R155, R163

1 18.7P1S 18.7p1 70200100 18.7k-1/8w-1%-smt-1206  
R164

2 180PFS 180PF 70300054 180PF----SURFACE MNT--1206 PACK  
C124, C143

2 18KS 18K 70200030 18K--1/8W--5%---SMT  
R162, R165

1 18S 18 70200116 18-1/4W-5%-SMT-1206  
R204

5 1KS 1K 70200019 1k---1/8w--5%---smt  
R124, R145, R157, R179, R214

22 1N4148S 4148 70418026 1N4148 (LL34) DIODE SMT  
CR100, CR103, CR104, CR105, CR106,  
CR107, CR108, CR110, CR111, CR112,  
CR113, CR114, CR115, CR116, CR117,  
CR118, CR119, CR121, CR133, CR134,  
CR135, CR136

3 1N751S 1N751 70418027 5.1V, 5%, 500MW, ZENER, SMT (LL34)  
CR101, CR109, CR122

3 2.2KS 2.2K 70200021 2.2K---1/8W--5%---smt  
R150, R159, R172

4 2.2R50 2.2R50 70320180 2.2MF-----20%----50VDC---EL--T&A  
C117, C118, C121, C186

1 22.1P1S 22.1p1 70200101 22.1-1/8w-1%-smt-1206  
R148

1 220KS 220K 70200044 220K--1/8W--5%---SMT  
R175

2 220S 220 70200016 220---1/8w--5%---smt  
R186, R195

1 22KS 22K 70200031 22K--1/8W--5%---SMT  
R149

5 22R50 22R50 70320181 22MF-----20%----50VDC---EL--T&A  
C116, C134, C137, C139, C153

2 22S 22 70200052 22----1/8W--5%---SMT  
R147, R180

2 250SOND 70900915 70900915 4-40 X 1/4 SWAGE SPACER NICKEL  
SO02, SO04

3 250SOWD 70900785 70900785 SPACER, 1/4,R(#4),.187 SWAGE ALUM.  
SO03, SO05, SO06

2 270PFS 270pf 70300052 270pf 50wvdc 10% xr7 1206  
C142, C152

4 270S 270 70200017 270---1/8w--5%---smt  
R144, R174, R197, R219

4 2N2369S 2N2369 70418134 2N2369 NPN (SOT23)  
Q111, Q115, Q116, Q120

4 2N3904S 2N3904 70418135 2N3904 NPN (SOT23)  
Q107, Q109, Q112, Q117

1 2N5401S 2N5401 70418136 2N5401 PNP (SOT23)  
Q102

1 2N5551S 2N5551 70418137 2N5551 NPN (SOT23)  
Q101

5 2N6534S 6534 70418033 2N6533/34 PNP (SOT-23) XSISTOR SMT  
Q104, Q110, Q114, Q118, Q119

6 3.3KS 3.3K 70200023 3.3K--1/8W--5%---smt  
R130, R152, R167, R178, R181, R208

3 3.9KS 3.9K 70200024 3.9K--1/8w--5%---smt

R139, R188, R190

1 330KS 330K 70200073 330K-1/8W--5%----SM  
R109

1 330S 330 70200071 330--1/8W--5%----SM  
R136

2 33KS 33K 70200063 33K--1/8W--5%----SM  
R117, R133

3 39PFS 39PF 70300012 39PF COG 50V 5% SMT 1206  
C107, C129, C141

8 4.7KS 4.7K 70200025 4.7K--1/8W--5%---smt  
R103, R106, R121, R123, R134, R166,  
R206, R216

4 4.99KP1S 4.99kp1 70200049 4.99k--1/8W--1%---SMT  
R115, R116, R131, R132

4 4560H 4560 70418053 4560 DL OP AMP SOIC-8  
U100, U102, U105, U109

6 470S 470 70200046 470--1/8W--5%---SMT  
R102, R170, R173, R211, R212, R213

2 47KS 47K 70200032 47K---1/8W--5%---SMT  
R146, R171

5 47S 47 70200012 47---1/8w--5%---smt  
R191, R209, R210, R220, R221

2 4PHVL 4PHVL 73717015 4 PIN HEADER VERT. W/LOCK  
J103, J104

2 5.1KS 5.1K 70200094 5.1K---1/8w--5%---SMT1206  
R153, R158

1 5.62KP1S 5.62KP1 70200118 5.62K--1/8W--1%---SMT  
R217

1 6.19KP1S 6.19K 70200148 6.19K--1/8W--1%---SMT--1206  
R198

2 6.81KP1S 6.81K 70200084 6.81K---1/8W--1%---SMT 1206  
R112, R140

1 680KS 680K 70200113 680K--1/8W--5%---SMT-1206  
R113

4 680PFS 680PF 70300016 680PF---COG-50V---5%---SMT--1206 PACK

C123, C125, C168, C175

1 68KS 68K 70200033 68K--1/8W--5%---SMT

R114

1 6SRHDRL 73717123 73717123 6 PIN .100 S/R HEADER LOCKING

J112

1 74HC08H 74HC08 70418001 74HC08 (SO14) SMT

U110

1 74HC132H 74HC132 70418121 74HC132D NAND GATE SMT

U111

1 74HC100H 74HC100 70418042 74HC100 (SO14) SMT

U104

2 820PFS 820PF 70300053 820PF-SURFACE MNT--1206 PACK

C130, C169

1 82KS 82K 70200112 82K-1/8W-5%-SMT-1206

R205

1 8SRHDRL 73717010 73717010 8 PIN HEADER W/LOCK

J101

1 90.9P1S 90.9P1 70200142 90.9--1/8W--1%---SMT1206

R111

1 BC858S BC858 70418066 BC858CLT1,SOT23,PNP

Q103

4 FEBEAD FEBEAD 70502122 FERRITE BEAD INDUCTOR

BD01, BD02, BD03, BD04

1 HCT74 74HCT74 70430074 74HCT74 CMOS DUAL FLIP FLOP

U106

1 J111S J111 70418138 J111 N-CH JFET SOT23-SMT

Q100

1 MC33025 MC33025 70433025 MC33025P PULSE WIDTH MODULATOR

U108

1 NE529H NE529H 70418186 NE529 HI-SPD VLTG CMP SMT

U103

3 RASN6165 71466165 71466165 JK R/A 12.5MM NIN STEREO -88

J102, J105, J115

1 SPX5U SPX5U 73717003 5 EACH OF STAKE PINS

J108

1 XLKM6224 71466224 71466224 xlr,male 6.5mm pc mt

J107

\*\*\*\*\*  
\* END OF BILL OF MATERIALS REPORT \*  
\*\*\*\*\*