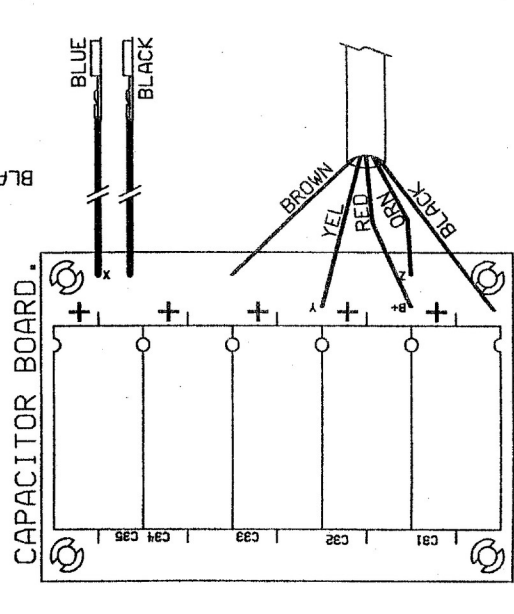
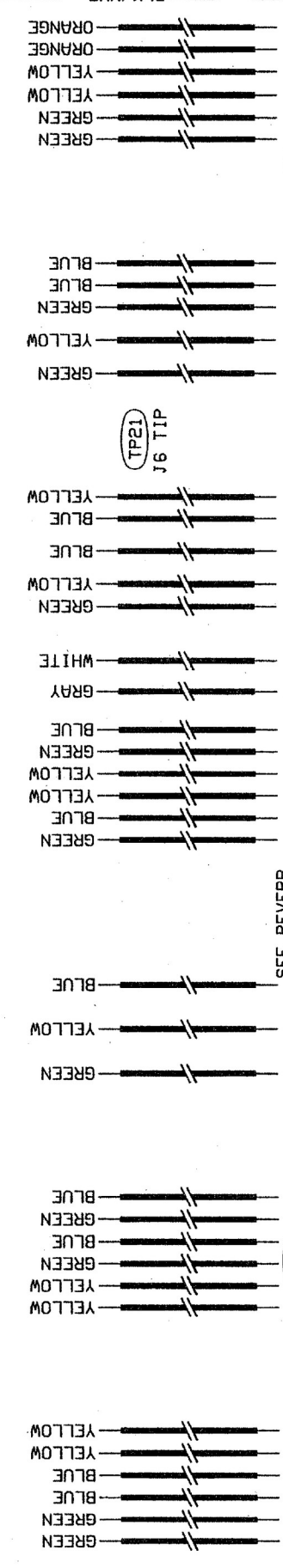
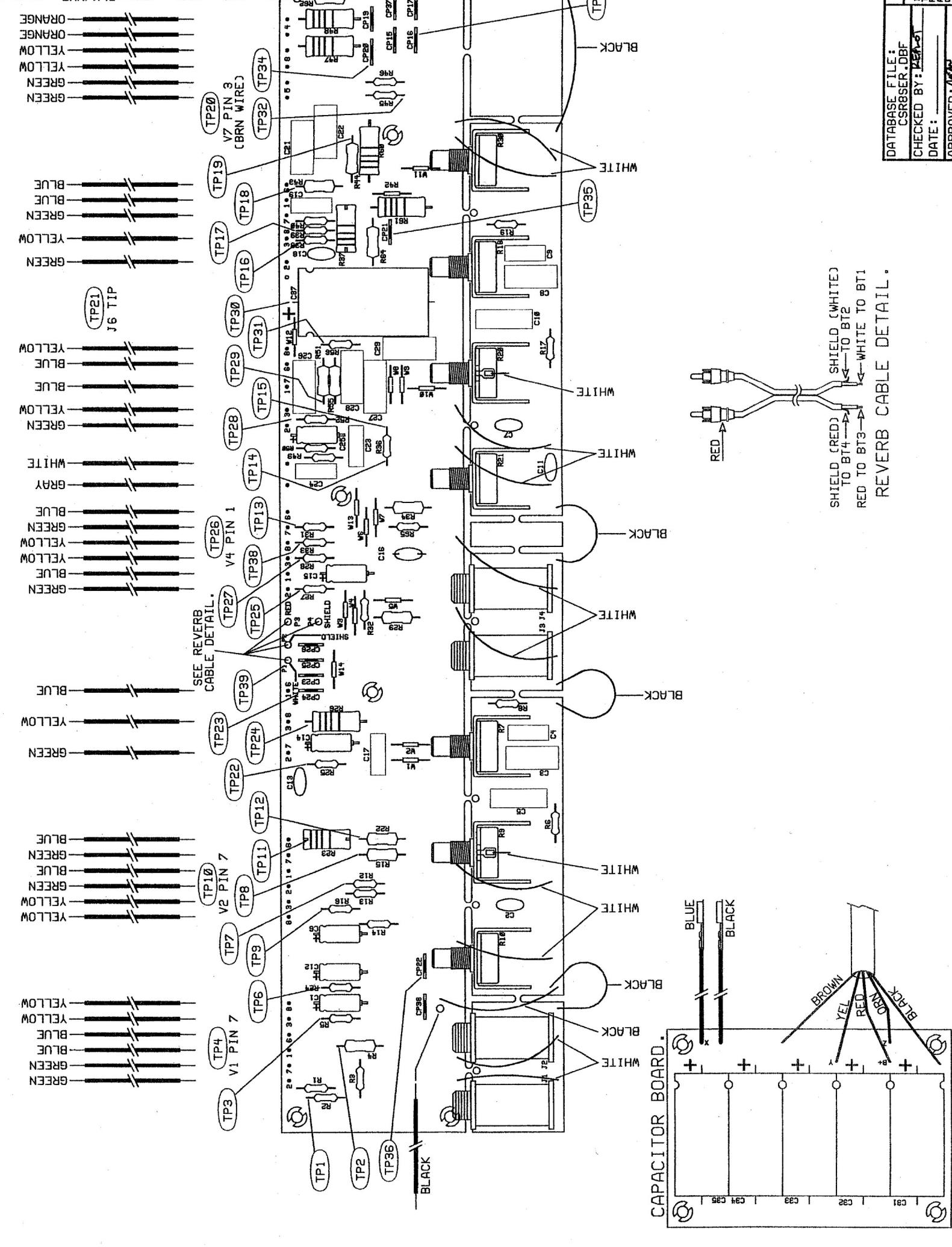


1 2 3 4 5 6

C B A

REVISIONS				
ZONE	REV.	DESCRIPTION	DATE	APPROVED
	A	RELEASED CSR8	21-OCT-94	
	B	EC 1306	30-JAN-95	



NOTES: 1.) PCB SHOWN AS FABRICATED, EXCEPT WITH CAPACITOR BREAK-AWAY BOARD SEPARATED.
2.) TP5 DELETED.

PROPRIETARY
 THIS DRAWING DOCUMENT CONTAINS INFORMATION WHICH IS PROPRIETARY TO AND IS THE PROPERTY OF THE FENDER MUSICAL INSTRUMENTS CO. AND SHOULD NOT BE USED, REPRODUCED OR COPIED IN ANY MANNER WITHOUT THE EXPRESSED WRITTEN CONSENT FROM:
 FENDER MUSICAL INSTRUMENTS CO.
 REGIONAL HEADQUARTERS
 CORONA, CA U.S.A.

MUSICAL INSTRUMENTS
 Corona, California U.S.A.

TITLE: SERVICE DIAGRAM FOR CUSTOM VIBROLUX REVERB AMP

SIZE: **D** DRAWN: WHY/MDW REV. **B**
 ENGR: ZINKY DRAWING NUMBER: **047556**

SCALE: NONE DATE: 27-APR-90 SHEET 1 OF 1

DATABASE FILE: CSR8SER.DBF
 CHECKED BY: MSA-01
 DATE:
 APPROVED:
 DATE: 21-APR-2000
 TOLERANCES: UNLESS OTHERWISE NOTED
 X.X ±0.050"
 X.XX ±0.010"
 X.XXX ±0.005"
 ANGLES ±0.500°

FILM/DWG: SERVICE DIAGRAM	DATE: 27-APR-90
DATABASE: CSR8SER.DBF	DATE: 27-APR-90
LAYERS PLOTTED: 1 2 3 4	10
15 19	

1 2 3 4 5 6