



Plane nose



Quick fix nut



Fully threaded nose

## 1/4" Jacks – Stacking Jacks



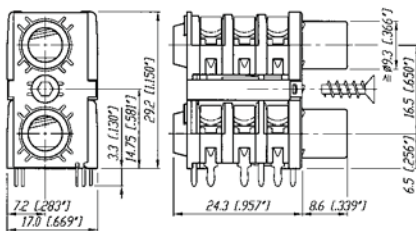
NSJ12HC



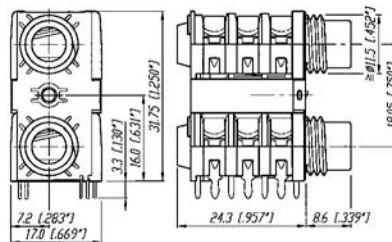
NSJ12HF-1

- Mono and stereo dual slim jack socket for PCB mounting with switch contacts
- Mounting method by either two quick fix or threaded nuts or one single center screw
- Highest board packing density as two jacks are in a single footprint, fit in 1 RU
- Version with fully and half threaded nose, full nose, quick-fit and plane

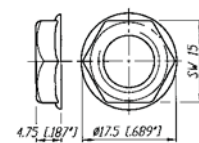
NSJ12HC



NSJ12HH-1



NRJ-NUT-B



Specifications	Vertical Jack	Locking Cable & Chassis Jack	M Jack	Slim Jack	Stacking Jack
----------------	---------------	------------------------------	--------	-----------	---------------

## Electrical

Contact resistance	- initial	< 10 mΩ	< 6 mΩ	< 15 mΩ	< 10 mΩ	-
	- Top row	-	-	-	-	< 15 mΩ
	- Bottom row	-	-	-	-	< 10 mΩ
Switch contact resistance	- for silver	-	-	< 30 mΩ	< 25 mΩ	-
	- for gold	< 15 mΩ	-	-	< 10 mΩ	-
	- Top row	-	-	-	-	< 15 mΩ
	- Bottom row	-	-	-	-	< 10 mΩ
Insulation resistance	≥ 1GΩ @ 500 V dc	●	●	●	●	●
Dielectric strength	1 kV dc	●	●	●	●	●
Rated current	3 A	●	10 A	●	●	●
Rated switch contact current	0.5 A @ 50 V	0.25 A @ 12 V	-	●	●	●

## Mechanical

Lifetime	> 10'000 cycles	●	●	●	●	●
Insertion / withdrawal force		<20N / >8N	<30N / >20N	<30N / >10N	<30N / >10N	<30N / >10N
Cap opening torque		25 N cm / 9.84 N in	-	-	-	-
Locking force		-	> 80 N	-	-	-
Wire size	(∅... max. for soldering tag)	-	1 mm <sup>2</sup> / 18 AWG ∅	-	-	-
Cable O.D. (FC6 only)		-	3.5 - 8.0 mm	-	-	-
Panel thickness		1.2 - 1.5 mm [0.047 - 0.06"]	-	-	-	-
	- Full nose type	-	-	< 3.0 mm	< 3.0 mm	-
	- Half nose type	-	-	< 1.0 mm	< 1.0 mm	-
	- Chrome nose	-	-	< 4.7 mm	-	-
	- NSJ*HL	-	-	-	-	1.0 - 1.6 mm
	- NSJ*HC	-	-	-	-	> 1.0 mm

## Material

Shell / Handle	PA 6.6 30% GR	●	ZnAl4Cu1	●	●	●
Shell Coating	Ni or black	-	●	-	-	-
	- FP6P: (PA 6.6 30% GR)	-	●	-	-	-
Insulation	PA 6.6 30% GR	-	●	-	-	-
Contacts	CuSn6	●	CuBe2/CuZn37 (ground)	●	●	●
Contact surface	gal 2 μm Ag / 0.2 μm Au	0.2 μm Au	2 μm Ag	●	●	gal 2 μm Ag
Cap / Nut / Washer	PA 6.6 30% GR	POM	-	●	●	●
Ring Nut	Brass (Ni plated)	-	-	-	●	●
Chuck	-	-	POM	-	-	-
Bushing	-	-	PA 6.6 15% GR + PUR	-	-	-

## Environmental

Solderability complies with	IEC 60068-2-20	●	●	●	●	●
Standard Compatibility						
	EIA RS 453 + IEC 60603-11	NJ*FD	●	●	●	●
	B-GAUGE BPO 316, MIL-J-641/3	NJ*TB	-	-	-	-
Temperature range	-25 °C to +70 °C	●	●	●	●	●
Flammability	UL94 V-0	-	●	●	●	●

**Circuits:**

Mono unswitched	Mono switched	Stereo unswitched	2x switching (normalling) Stereo	3x switching (normalling) Stereo
N*J2**	N*J4**	N*J3**	N*J5**	N*J6**

EXCEPTION: NRJ\*HM-1-PRE & NRJ\*HH(F)-1 ..... Sleeve not switched