

SERVICE DOCUMENTATION



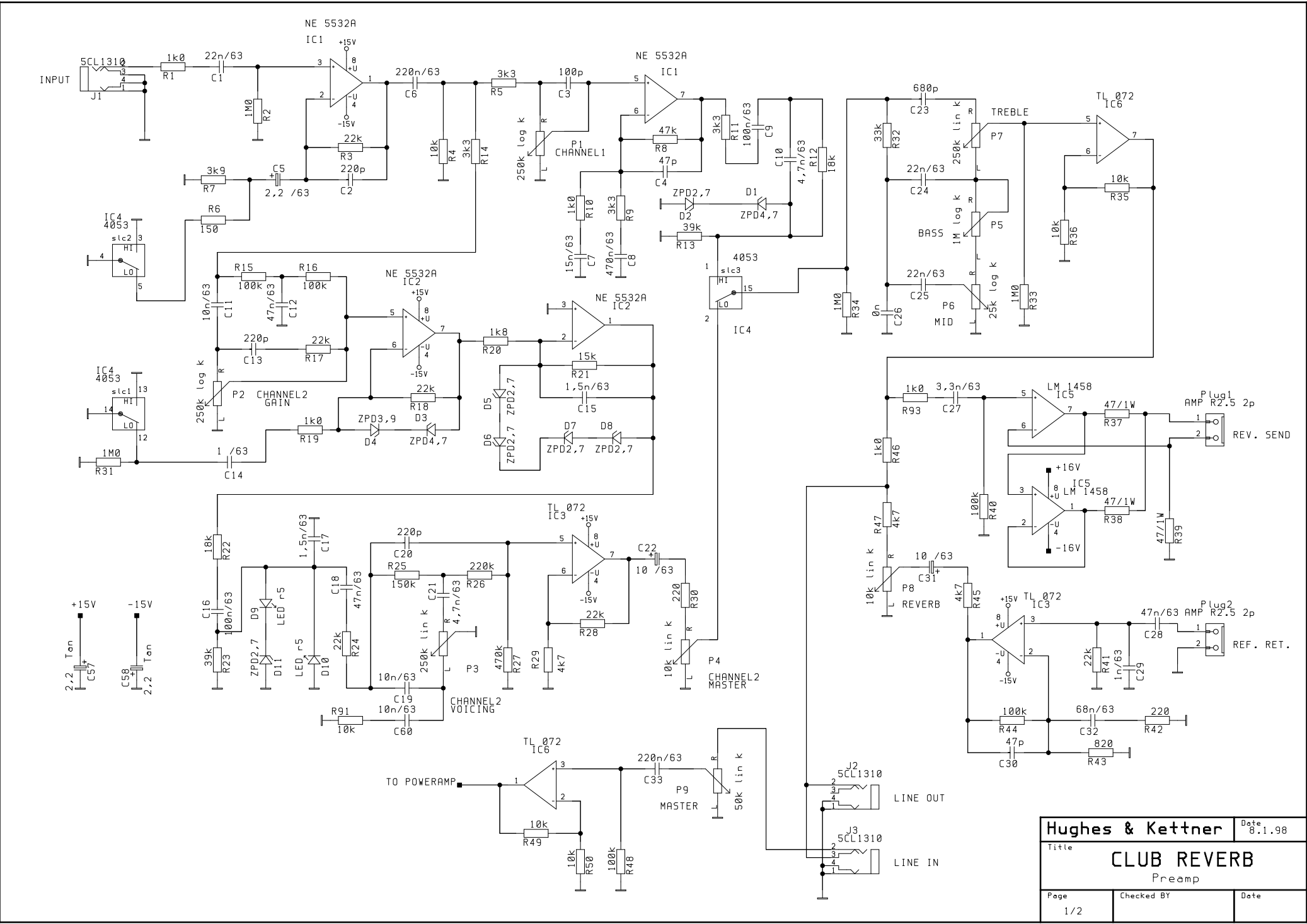
Club Reverb

Inhaltsverzeichnis/ Contents

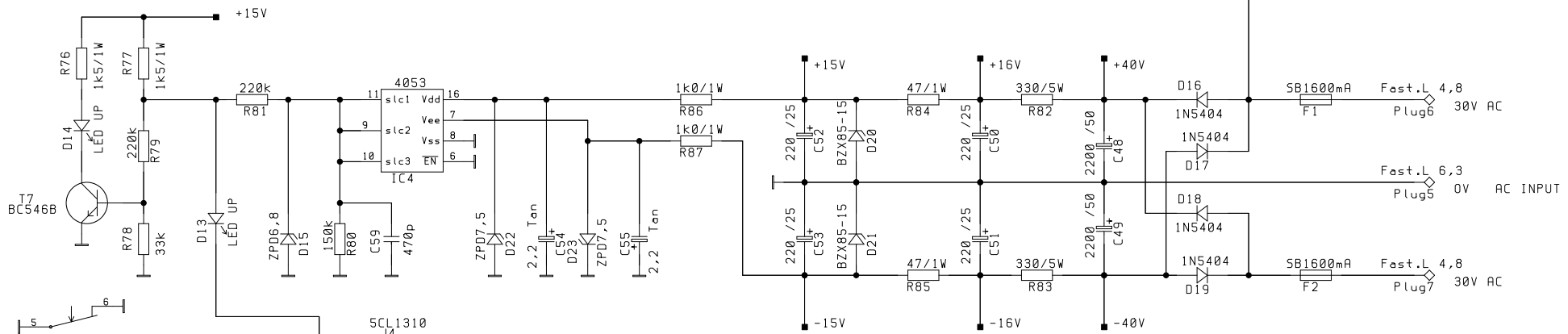
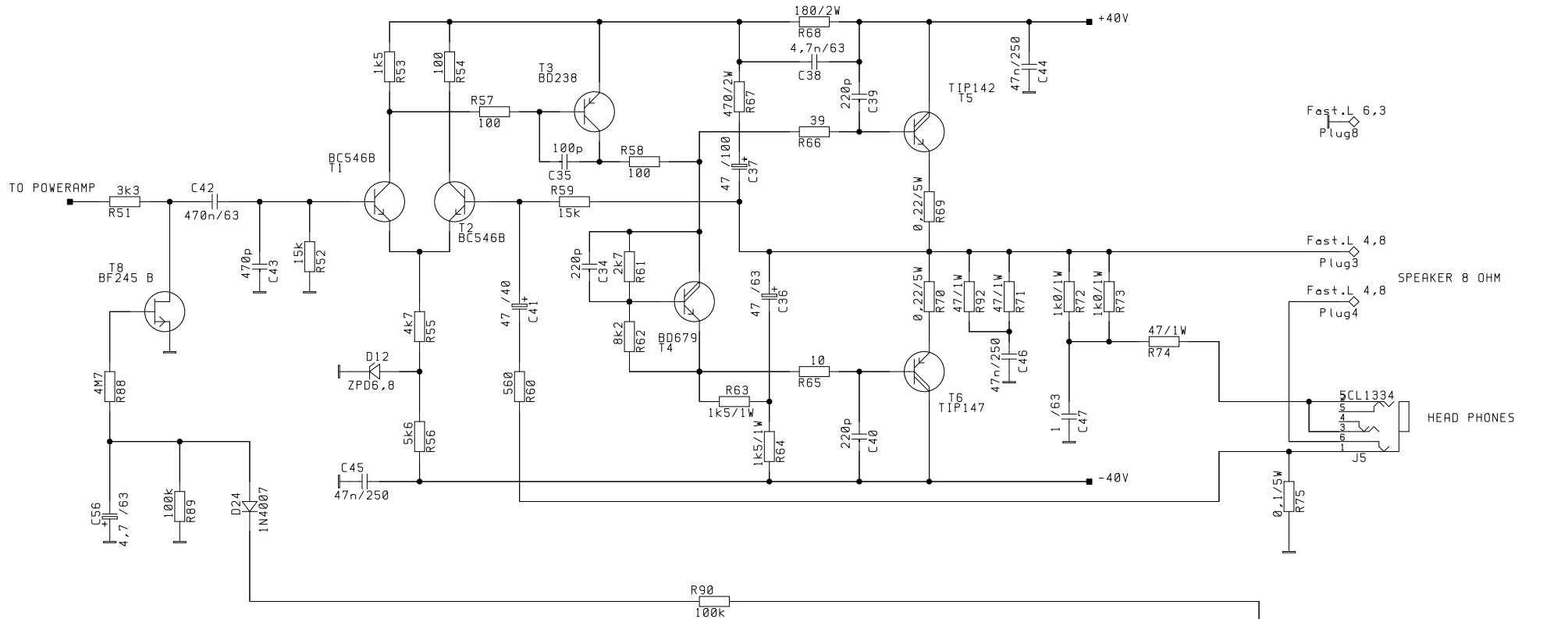
- 1 Schaltpläne/ schematic diagrams**
- 2 Bestückungspläne/ component parts**
- 3 Explosionszeichnung/ explosion drawings**
- 4 Bestellnummern/ order no.**
- 5 Bestellinformationen/ ordering informations**
- 6 Technische Daten/ technical data**

GD/ 08.11. 99

1 Schaltpläne/ schematics



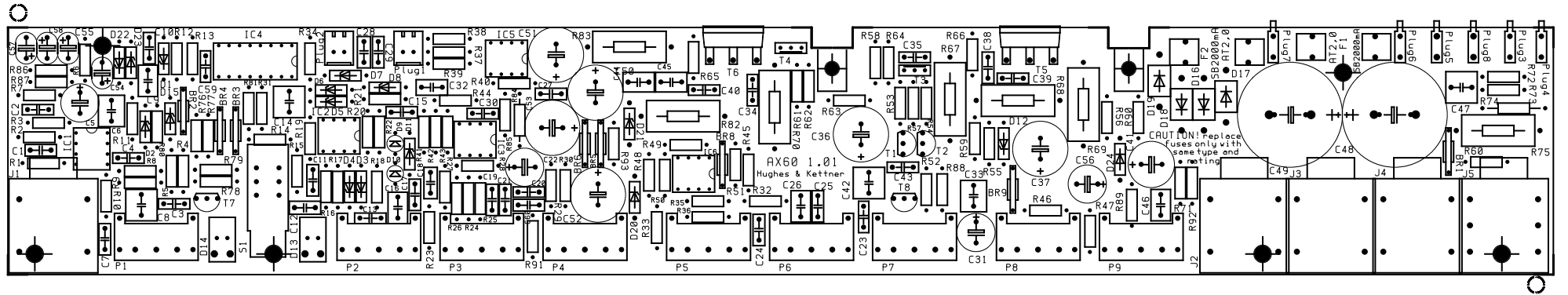
Hughes & Kettner		Date
Title		8.1.98
CLUB REVERB		
Preamp		
Page	Checked BY	Date
1/2		



Hughes & Kettner		Date
Title		8.1.98
CLUB REVERB		
Poweramp		
Page	Checked BY	Date
2/2		

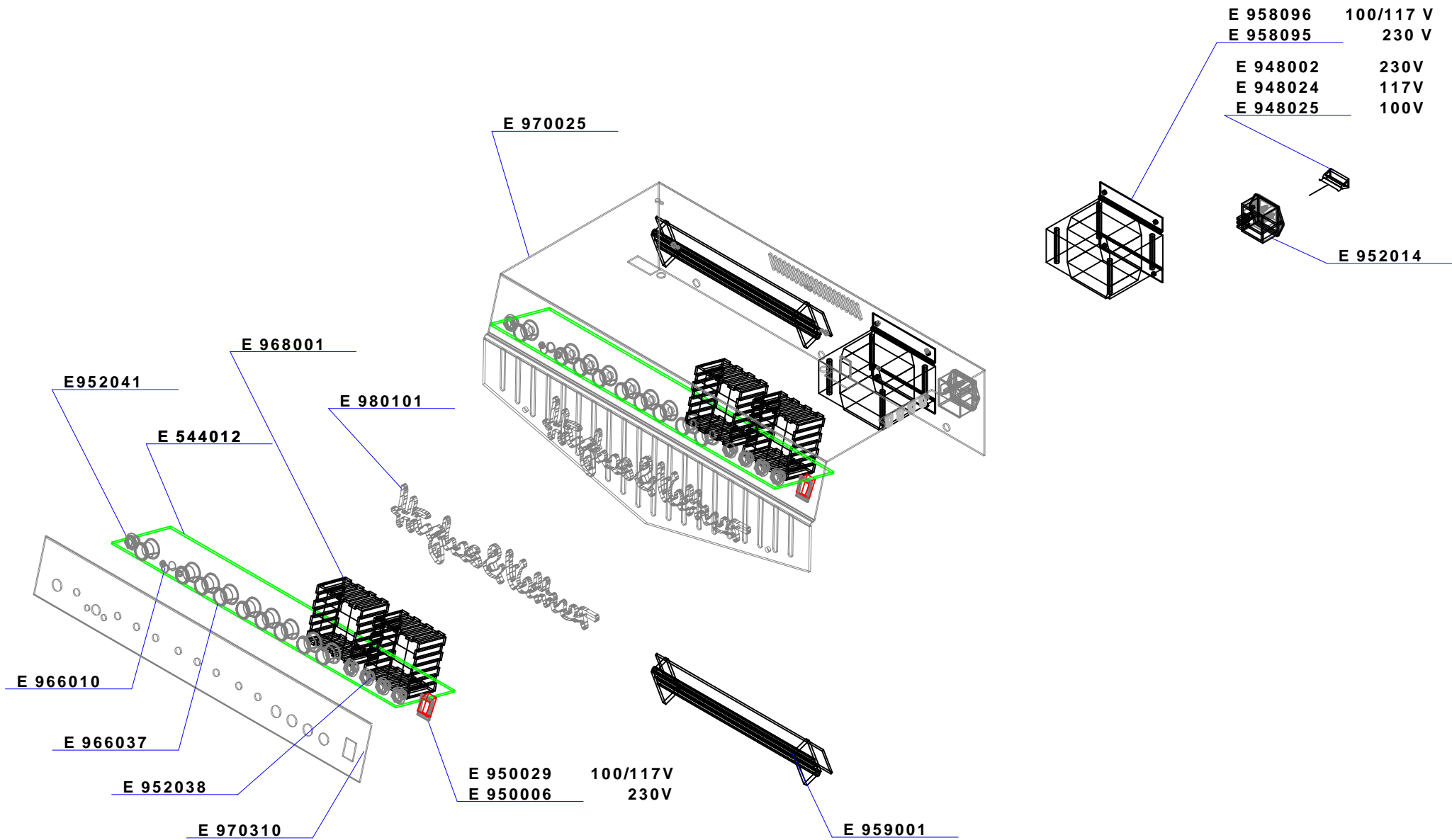
GD/ 08.11. 99

2 Bestückungspläne/ component parts

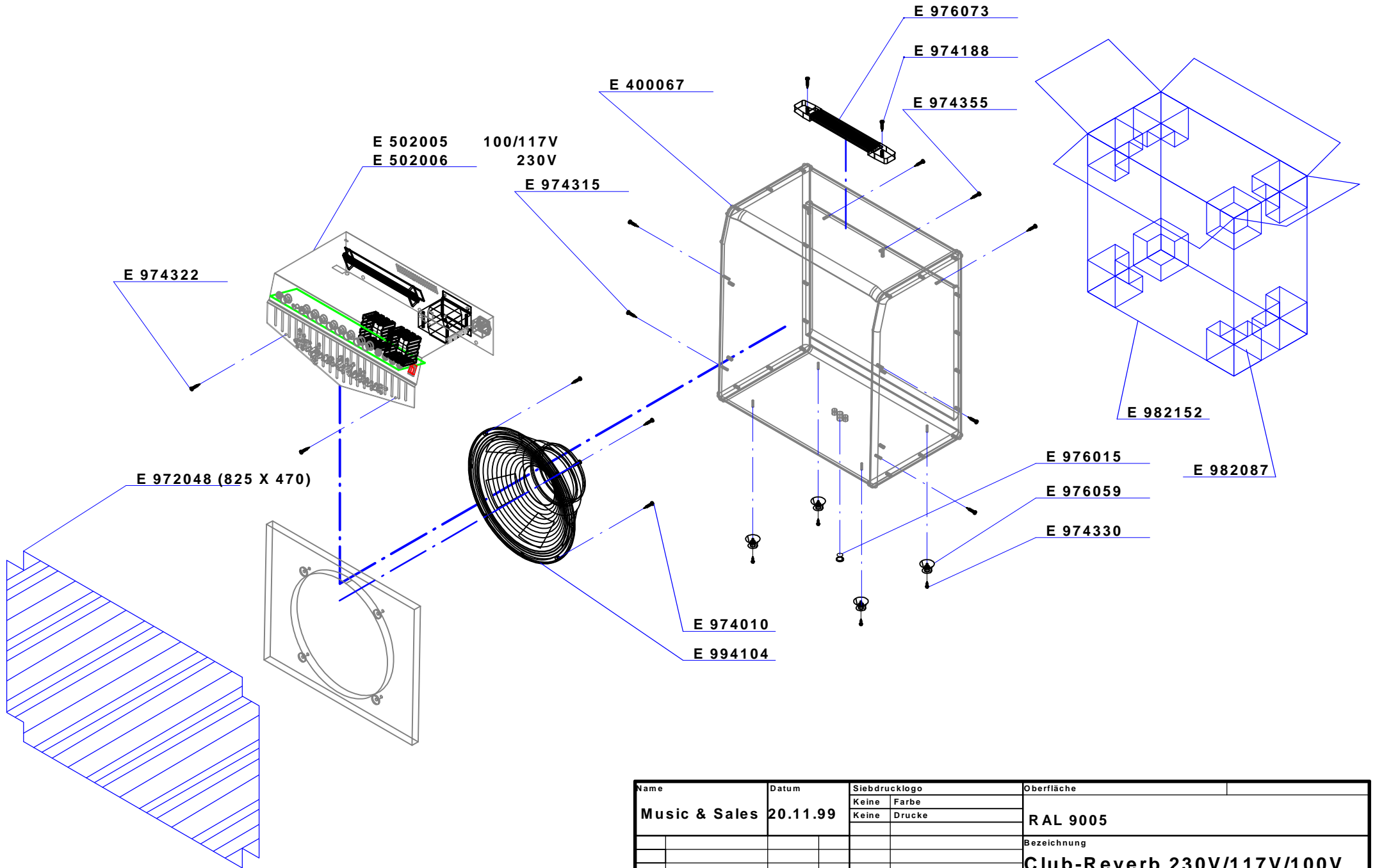


GD/ 08.11. 99

3 Explosionszeichnung/ explosion drawings



Name	Datum	Siebdrucklogo		Oberfläche
		Keine	Farbe	
Music & Sales	20.11.99	Keine	Drucke	
				Bezeichnung
				Club-Reverb Chassis 100/117V E502005
				Club-Reverb Chassis 230V E502006



Name	Datum	Siebdrucklogo		Oberfläche
		Keine	Farbe	
Music & Sales	20.11.99	Keine	Drucke	RAL 9005
				Bezeichnung
				Club-Reverb 230V/117V/100V

4 Bestellnummern/ order no. Club Reverb

no.	schematic position	name	specs	part no.
1	mains switch (230V)	switch	230V	E 950 006
2	mains switch (100/ 117V)	switch	117V	E 950 029
3	mains transformer	transformer	230V	E 958 095
4	mains transformer	transformer	100/ 117V	E 958 096
5	P1 (clean vol)	pot	250 K Ω log, mono	E 914 044
6	P2 (lead gain)	pot	250 K Ω log, mono	E 914 044
7	P3 (lead voicing)	pot	250 K Ω lin, mono	E 914 043
8	P4 (lead master)	pot	10 K Ω lin, mono	E 914 033
9	P5 (bass)	pot	1 M Ω log, mono	E 914 047
10	P6 (mid)	pot	25 K Ω log, mono	E 914 048
11	P7 (treble)	pot	250 K Ω lin, mono	E 914 043
12	P8 (reverb)	pot	10 K Ω lin, mono	E 914 033
13	P9 (master vol)	pot	50 K Ω lin, mono	E 914 035
14	S1 (channel select)	switch	2 x um	E 950 001
15	D16- D19	rectifier	1N5404/ 3A/ 400V	E 934 025
16	D20, D21	z-diode	15V/ 1,3W	E 934 004
17	D22, D23	z-diode	7,5V/ 0,5W	E 934 021
18	D24	rectifier	1N4007/ 1A/ 1000V	E 934 023
19	T1	transistor	BC546B	E 938 009
20	T2	transistor	BC546B	E 938 009
21	T3	transistor	BD238	E 938 022
22	T4	transistor	BD679	E 938 024
23	T5	transistor	TIP142	E 938 032
24	T6	transistor	Tip147	E 938 033
25	T7	transistor	BC546B	E 938 009
26	T8	transistor	BF245B	E 938 028
27	IC 1	OP amp	NE5532A	E 940 004
28	IC 2	OP amp	NE5532A	E 940 004
29	IC 3	OP amp	TL072	E 940 018
30	IC 4	multiplexer	HCF 4053	E 940 002
31	IC 5	OP amp	LM 1458N	E 940 011
32	IC 6	OP amp	TL072	E 940 018

5 Bestellinformationen/ ordering informations

Bestellinformationen und Ersatzteilbestellungen

Deutschland:

Music & Sales

Leipziger Straße 3

D- 66606 St. Wendel

Service

Tel.: 06851/ 905 333

Fax: 06851/ 905 100

E-mail: service@musicandsales.com

Technische Fragen

Tel.:06851/ 905 330

E-mail: service@musicandsales.com

Sparepart orders and technical questions for all other countries:

contact your local distributor or

Hughes & Kettner

Leipzigerstr. 3

66606 St. Wendel

Germany

Tel.: +49 6851/905 210

Fax: +49 6851/905 200

Email: intlservice_handk@musicandsales.com

6 Technische Daten/ technical data

Club Reverb

Eingänge/ inputs:

Input: Buchse/ connection: $\frac{1}{4}$ " phone jack
Bauart Eingang/ input type: unbalanced
Eingangsimpedanz/ input impedance: 1 M Ω
Empfindlichkeit/ sensitivity: - 10 dB
max. Eingangspegel/ max.input level: +10 dB

Line In: Buchse/ connection: $\frac{1}{4}$ " phone jack
Bauart Eingang/ input type: unbalanced
Eingangsimpedanz/ input impedance: 47 k Ω
Empfindlichkeit/ sensitivity: 0 dB
max. Eingangspegel/ max.input level: +6 dB

Ausgänge/ outputs:

Line Out: Buchse/ connection: $\frac{1}{4}$ " phone jack
Bauart Ausgang/ output type: unbalanced
Ausgangsimpedanz/ output impedance: 1 k Ω
Ausgangspegel/ output level: 0 dB
max. Ausgangspegel/ max.output level: +6 dB

Headphones: Buchse/ connection: $\frac{1}{4}$ " phone jack stereo
Ausgangsimpedanz/ output impedance: 330 Ω
Ausgangspegel/ output level: 100 mW into 4- 600

Power amp:

65 Watts (RMS) into 8 Ω @ k = 1%

Speaker out:

Anzahl/ no.: none

Speaker:

no.\ size: 1 x 12"
type \ name: Celestion\ Rock Driver Junior
impedance: 8 Ohm
power handling: 70 Watt
power handling programm: 100 Watt

Allgemeine elektrische Daten/ general electrical data:

Schutzklasse I/ protection class 1 (protectively earthed)

Netzspannung/ mains voltage: 230V Netzsicherung/ fuse: T 500 mA
Netzspannung/ mains voltage: 117V Netzsicherung/ fuse: T 1 A oder SB 1 A
Netzspannung/ mains voltage: 100V Netzsicherung/ fuse: T 1,25 A

max. Stromaufnahme/ max. current: 560 mA @ 230V
max. Leistungsaufnahme/ max. power consumption: 130 VA @ 8 Ω
Netzspannungsbereich/ mains voltage range: +/- 10 %
Umgebungstemperaturbereich/ temperatur range: - 10 °C bis + 60 ° C
interne Sicherungen/ internal fuses: 2 x T 2 A

Allgemeine mechanische Daten/ general mechanical data:

Abmessungen/ sizes: Breite/ width: 465 mm Höhe/ height: 495 mm Tiefe/ depth: 255 mm
Gewicht/ weight: 15 kg