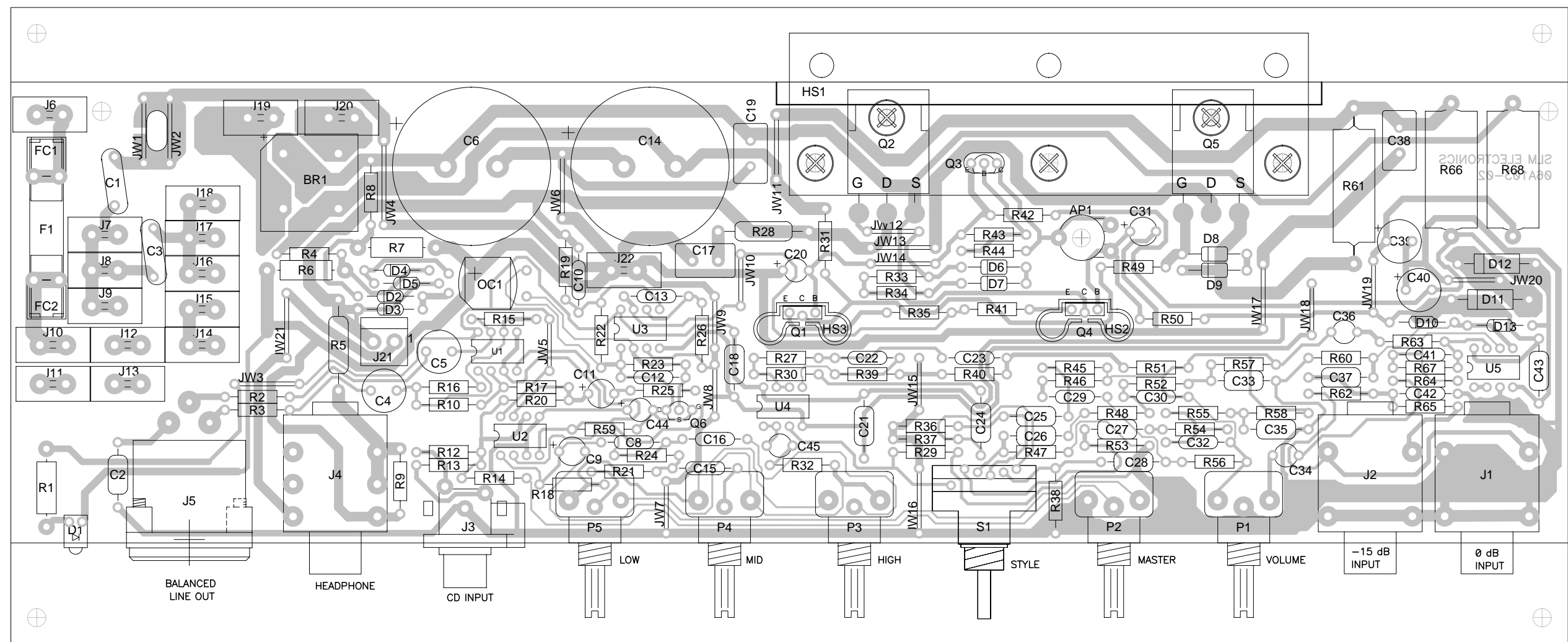



SLM ELECTRONICS  
06A103-02 REV 0



PWA P/N 07-103-02

NOTES:  
1. GOOP IN ACCORDANCE WITH PRODUCTION S.O.P.

CAUTION:  
THIS ASSEMBLY DRAWING IS PROVIDED FOR USE BY QUALIFIED PERSONNEL.  
TO AVOID RISK OF ELECTRIC SHOCK, REFER SERVICING TO QUALIFIED SERVICE PERSONNEL.  
DO NOT PERFORM ANY SERVICING BEYOND THAT EXPLAINED IN THE OPERATING INSTRUCTIONS.

1	7/28/99	PCB TO-02 ASSY TO -02 SWAPPED J21 PINS & ROTATED IT. CHGD HEADPHONE GND TRACES DELETED MOD FOR -01. FUSE VALUE CHG ON SILKSCREEN.	N00062	REM		
0	7/01/99	CONTROL ISSUE	ECR00047 ECR990512-01	REM		
REV	Date	DESCRIPTION	Ecr(s)/Ecn(s)	Chgd By	Appvd by	Date
THE INFORMATION CONTAINED ON THIS DRAWING IS PROPRIETARY TO ST. LOUIS MUSIC, INC.						
Signatures:		Date:		 11880 Borman Drive, St. Louis, MO 63146		
Drawn: REM		1/21/99				
Checked: -		-				
Released:						
Tolerance:		Drawing Size: B		Drawing Title: PWA-BASS AMPLIFIER		
		Drawing Type: ASSEMBLY		Drawing Number: 07-103-XX		
		Class Code: NONE				
		Sheet 1 of 1				

1	7/28/99	PWB TO -02	N00062	REM		
0	7/1/99	ADDED JW21	ECR00047	REM		
		CONTROL ISSUE				
Rev.	Date	DESC.	ECR(s)/ECN(s)	Chgd by	Appvd by	DATE
THE INFORMATION CONTAINED ON THIS DRAWING IS PROPRIETARY TO						
ST. LOUIS MUSIC, INC.						
		SLM Electronics				
		11880 Borman Drive, St. Louis, MO 63141				
		Signatures:	Date:			
Drawn: REM			6/17/99			
Checked:				First Used On:	BA115a	
Released:						
Tolerance:	Drawing Size:	A	Drawing Title:	PWA-BASS AMPLIFIER		
	Drawing Type:	PL				
	Class Code:		Drawing No.:	07-103-PL		
	Scale:	N/A				

ASSEMBLY PART #

07-103-02

REVISION 1

ITEM	QTY	REFDES	P/N	DESC
1	1	PWB1	06A103-02	BA115a RAW PC BOARD
2	2	C1	10-332-01	.0033 UF [20% TOL] UL/VDE DISK
		C3		
3	1	C41	10A101-21	100 PF 200V 10% NPO
4	1	C32	10A102-11	.001 uF 100V 10% X7R
5	1	C29	10A153-01	.015 uF 50V 10% X7R
6	1	C16	10A222-11	.0022uF 100V 10% NPO
7	1	C15	10A223-01	.022 uF 50V 10% X7R
8	5	C24	10A224-01	.22 uF 50V 10% X7R
		C25		
		C26		
		C27		
		C28		
9	2	C10	10A330-21	33 pF 200V 10% NPO
		C12		
10	1	C13	10A331-11	330 pF 100V 10% NPO
11	2	C22	10A333-01	.033 uF 50V 10% X7R
		C23		
12	1	C30	10A472-11	.0047 uF 100V 10% X7R
13	7	C2	10A473-11	.047 uF 100V 10% X7R
		C18		
		C21		
		C33		
		C35		
		C37		
		C43		
14	2	C8	10A560-21	56 pF 200V 5% NPO
		C42		
15	3	C17	10R104-03	.1 uF 100V 10% RAD POLY
		C19		
		C38		
16	2	C6	12-478-52	4700 uF 50V 20% EL
		C14		
17	2	C20	12R105-50	1 uF 50V 20% EL
		C44		
18	1	C36	12R105-51	1 uF 50V 20% EL NP
19	3	C9	12R106-35	10 uF 35V 20% EL
		C11		
		C31		
20	2	C39	12R107-32	100 uF 35V 20% EL
		C40		
21	2	C34	12R225-51	2.2 uF 50V 20% EL NP
		C45		
22	2	C4	12R226-81	22 uF 50V 20% EL NP
		C5		
23	1	J21	17-309-02	.156" ST POL MPSS156-2-D HEADER
24	14	J6	17-836-01	.250 PC TAB STBL LOC 6021-6
		J7		
		J8		

ASSEMBLY PART #

07-103-02

REVISION 1

ITEM	QTY	REFDES	P/N	DESC
		J9		
		J11		
		J12		
		J13		
		J14		
		J15		
		J16		
		J17		
		J19		
		J20		
		J22		
25	2	J10	17-894-01	.187 PC TAB STBL LOC 6024-6
		J18		
26	1	BR1	21-206-01	KBPC-602 BRIDGE RECTIF
27	1	D1	21-501-01	RED LED ASSY, HI EFF.
28	2	D11	21-553-01	1N5353B 16V ZEN DIODE
		D12		
29	4	D6	21A444-01	15V 1W ZENER 14 ohm Zz
		D7		
		D8		
		D9		
30	6	D2	21A914-01	75V PIV 10mA/1V .5W
		D3		
		D4		
		D5		
		D10		
		D13		
31	1	F1	23-309-01	2-1/2A 3AG NORM BLO
32	2	FC1	23-926-02	Universal Fuse Clip
		FC2		
33	3	SCREW3	30-638-53	6-32X3/8 PPH MS SEMS
		SCREW4		
		SCREW5		
34	2	SCREW1	30-650-53	6-32 X 1/2 PPH MS
		SCREW2		
35	3	NUT1	30-700-01	6-32 HEX KEPNUT ASSY
		NUT2		
		NUT3		
36	2	HS2	33-004-01	HEATSINK CLIP
		HS3		
37	1	HS1	33-444-01	KX-100 HEATSINK BRAKT
38	2	INS1	35-575-02	BERQUIST K10-104 INS
		INS2		
39	4	U1	37-072-01	TLO-72CP DUAL OP-AMP
		U2		
		U4		
		U5		
40	1	U3	37-532-01	NE5532(N/P) DUAL OP-AMP
41	2	J1	39-119-01	T/S JACK HORIZ CHROME NUT
		J2		

ASSEMBLY PART #

07-103-02

REVISION 1

ITEM	QTY	REFDES	P/N	DESC
42	1	J4	39-120-01	T/R/S JACK CHROME NUT
43	1	J3	39-121-05	DUAL RCA HORIZ MOUNT
44	1	J5	39-321-01	BELTON MALE HORIZ XLR
45	1	OC1	66-100-01	VTL-5C7 VACTROL
46	3	P3	70-133-01	50K LINEAR 30%@50% (10% TOL)
		P4		
		P5		
47	1	P2	70-203-23	20K REV AUDIO 15%@50% [20% TOL]
48	1	P1	70-503-23	50K REV AUDIO [10% TOL]
49	1	AP1	71-501-02	500 OHM TRIMPOT HORZ.
50	21	JW1	76-000-05	22 GA TINNED COPPER
		JW2		
		JW3		
		JW4		
		JW5		
		JW6		
		JW7		
		JW8		
		JW9		
		JW10		
		JW11		
		JW12		
		JW13		
		JW14		
		JW15		
		JW16		
		JW17		
		JW18		
		JW19		
		JW20		
		JW21		
51	8	R4	76-102-01	1K OHM .25W 5% RESISTOR
		R8		
		R18		
		R22		
		R32		
		R42		
		R43		
		R50		
52	2	R25	76-103-01	10K OHM .25W 5% RESISTOR
		R67		
53	7	R12	76-104-01	100K OHM .25W 5% RESISTOR
		R13		
		R14		
		R20		
		R29		
		R39		
		R65		
54	1	R59	76-105-01	1M OHM .25W 5% RESISTOR
55	5	R9	76-221-01	220 OHM .25W 5% RESISTOR

ASSEMBLY PART #

07-103-02

REVISION 1

ITEM	QTY	REFDES	P/N	DESC
		R31		
		R34		
		R35		
		R41		
56	2	R51	76-222-01	2.2K OHM .25W 5% RESISTOR
		R64		
57	15	R10	76-223-01	22K OHM .25W 5% RESISTOR
		R15		
		R16		
		R17		
		R21		
		R30		
		R36		
		R37		
		R38		
		R46		
		R48		
		R52		
		R54		
		R57		
		R62		
58	1	R60	76-224-01	220K OHM .25W 5% RESISTOR
59	2	R2	76-271-01	270 OHM .25W 5% RESISTOR
		R3		
60	1	R19	76-333-01	33K OHM .25W 5% RESISTOR
61	3	R26	76-470-01	47 OHM .25W 5% RESISTOR
		R33		
		R49		
62	3	R40	76-472-01	4.7K OHM .25W 5% RESISTOR
		R44		
		R63		
63	9	R23	76-473-01	47K OHM .25W 5% RESISTOR
		R24		
		R27		
		R45		
		R47		
		R53		
		R55		
		R56		
		R58		
64	1	R1	77-222-01	2.2K OHM .5W 5% RESISTOR
65	2	R6	77-332-01	3.3K OHM .5W 5% RESISTOR
		R7		
66	1	R61	78-001-03	.1 OHM 3W 5% WIREWOUND
67	1	R28	78-033-01	3.3 OHM 1W 5% MOX OR CF BULK
68	2	R66	78-271-05	270 OHM 5W 5% W/FEET
		R68		
69	1	R5	78-821-01	820 OHM 1W 5% MOX OR CF BULK
70	1	S1	88-108-01	5PST ROTARY RA PC MT
71	1	Q5	96-014-01	IRFP140R N-CH 100V 125W 27A

ASSEMBLY PART #

07-103-02

REVISION 1

ITEM	QTY	REFDES	P/N	DESC
72	1	Q4	96-034-01	MJE340 NPN 300V 20W .5A
73	1	Q1	96-035-01	MJE350 PNP -300V 20W -.5A
74	1	Q2	96-914-01	IRFP9140R P-CH -100V 150W -19A
75	1	Q3	96R006-01	MPSA06 NPN 80V 1.5W .5A
76	1	Q6	96R112-01	J112 N-CH -35Vdg -5Vgs(off) 50ohmRdsON
77	0		0	0