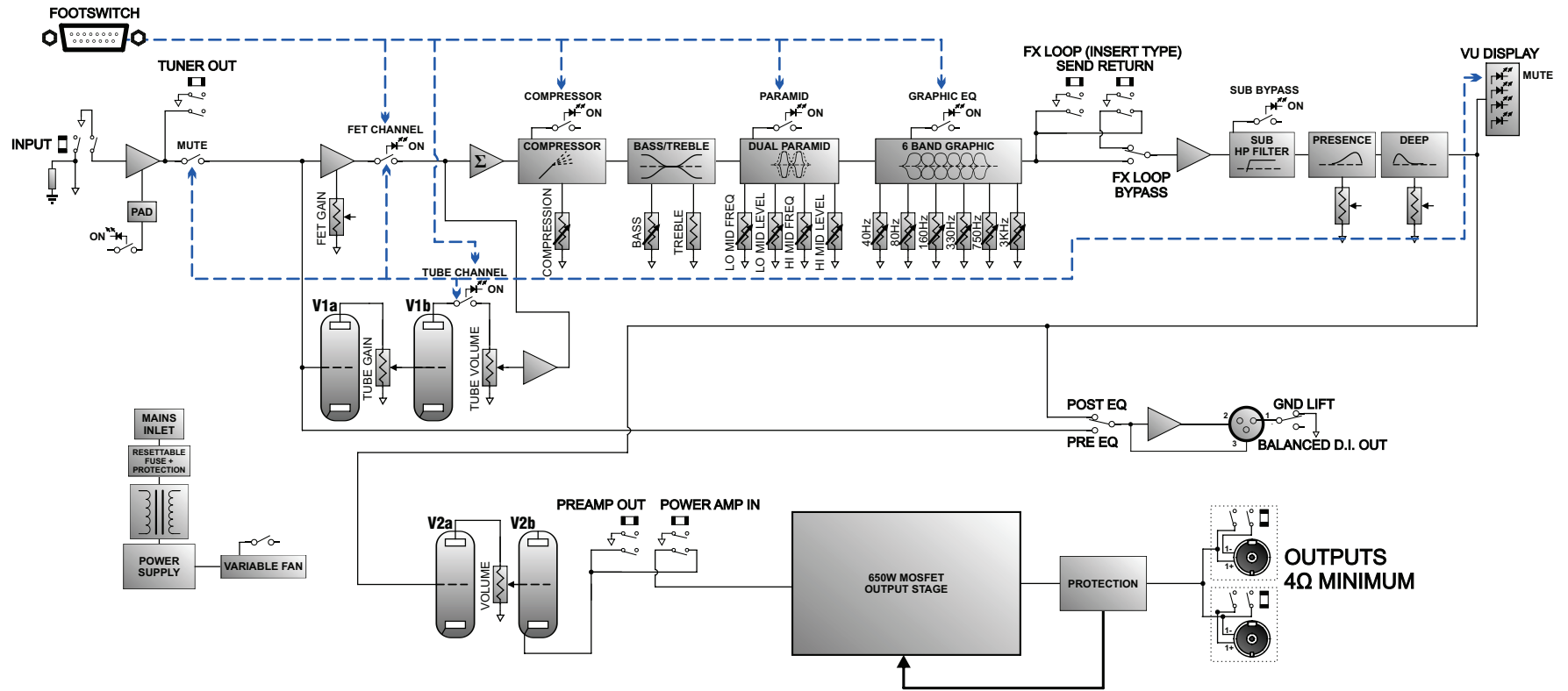


**MXF**

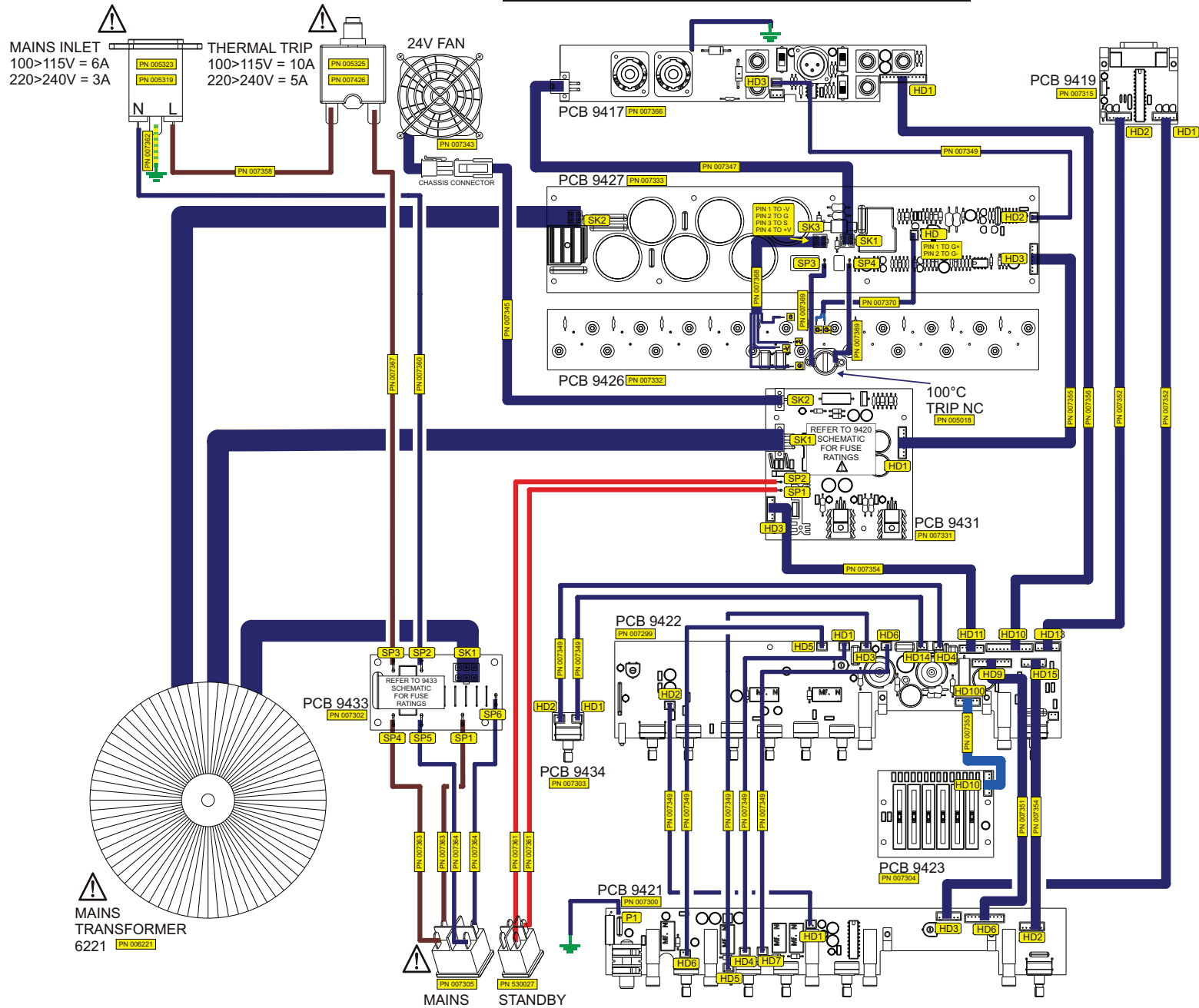
*Service Information*

**Laney**  
POWER TO THE MUSIC  
[www.laney.co.uk](http://www.laney.co.uk)

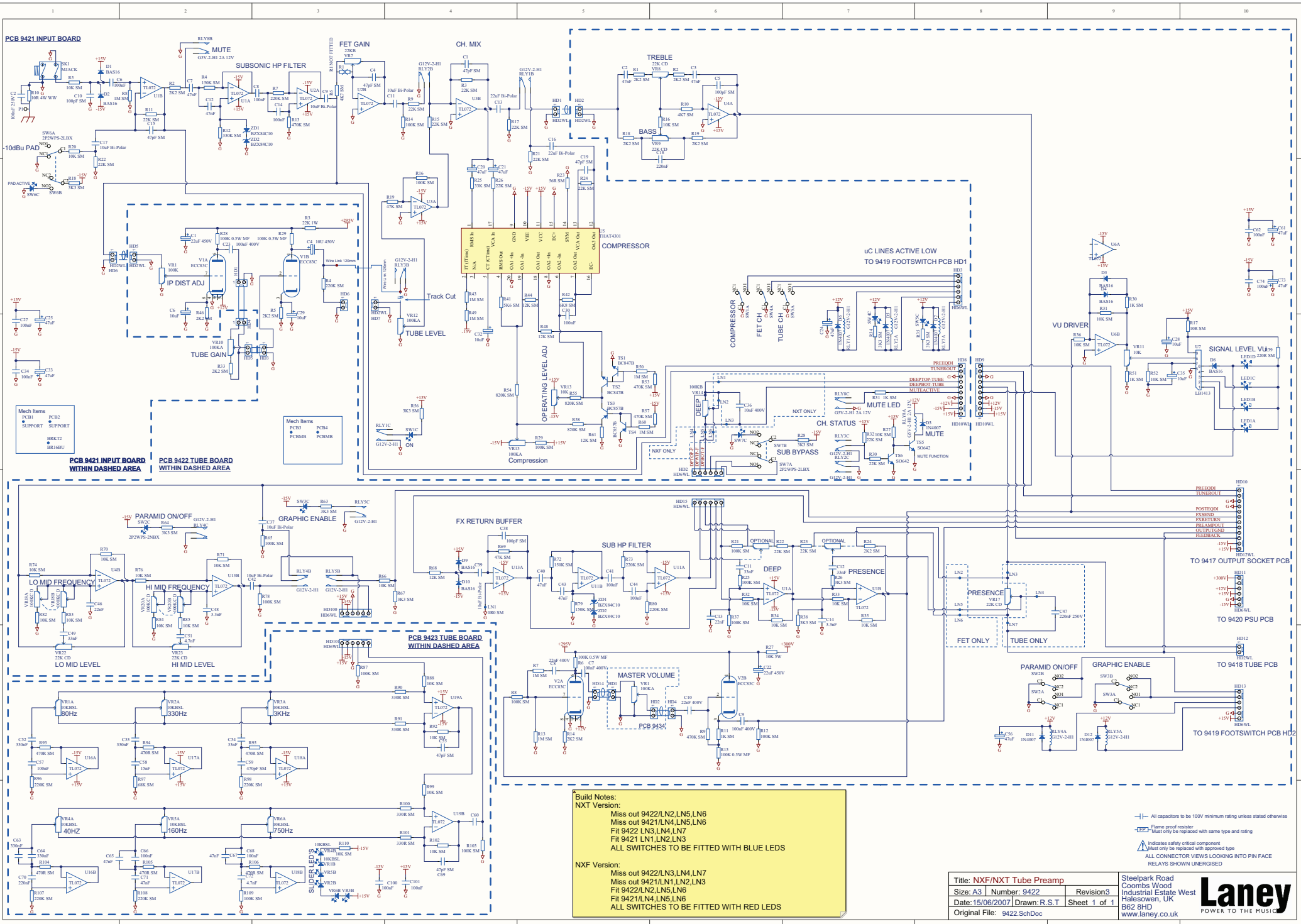
# NXF BLOCK DIAGRAM (SERVICE MANUAL)



# NXF SYSTEM WIRING DIAGRAM



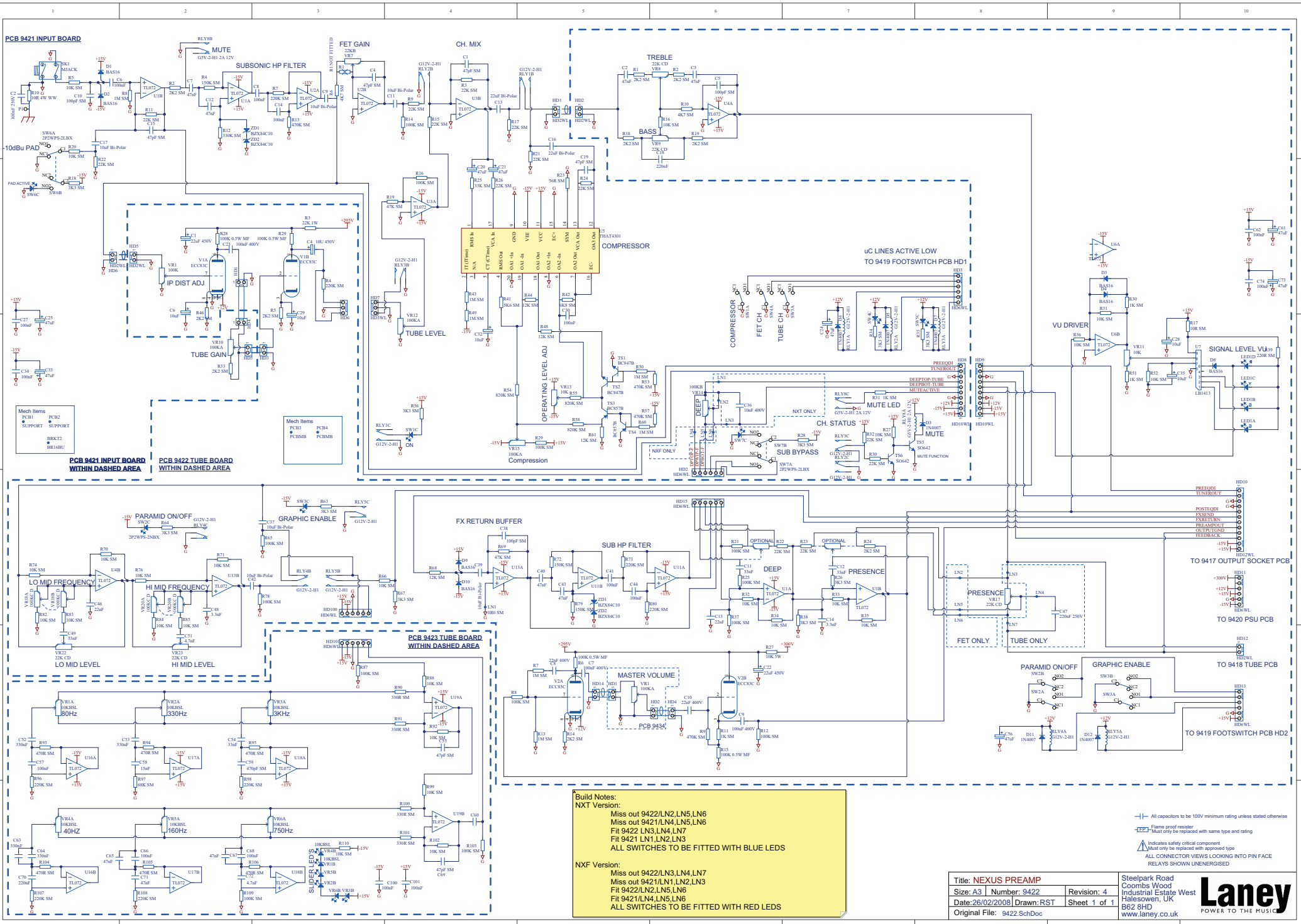
PCBS ALL VIEWED FROM CONNECTOR SIDE. ACTUAL ORIENTATION IN UNIT MAY DIFFER



**Build Notes:**  
**NXT Version:**  
 Miss out 9422/LN2, LN5, LN6  
 Miss out 9421/LN4, LN5, LN6  
 Fit 9422/LN3, LN4, LN7  
 Fit 9421/LN1, LN2, LN3  
 ALL SWITCHES TO BE FITTED WITH BLUE LEDS

**NXF Version:**  
 Miss out 9422/LN3, LN4, LN7  
 Miss out 9421/LN1, LN2, LN3  
 Fit 9422/LN2, LN5, LN6  
 Fit 9421/LN4, LN5, LN6  
 ALL SWITCHES TO BE FITTED WITH RED LEDS

All capacitors to be 100V minimum rating unless stated otherwise  
 Flame proof resistor  
 Must only be replaced with same type and rating  
 Indicates safety critical component  
 Must only be replaced with approved type  
 ALL CONNECTOR VIEWS LOOKING INTO PIN FACE  
 RELAYS SHOW UNERGED

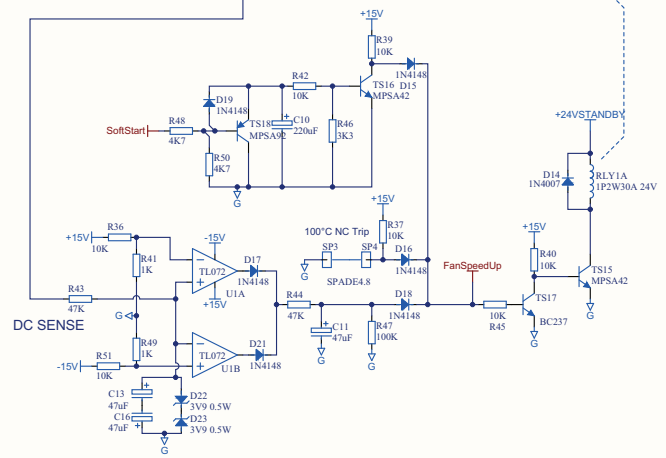
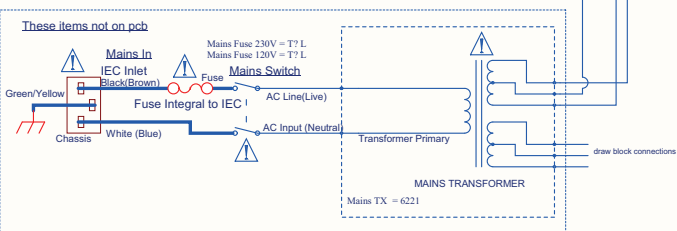
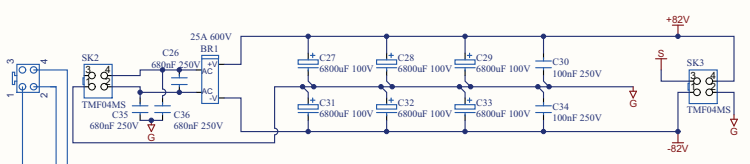
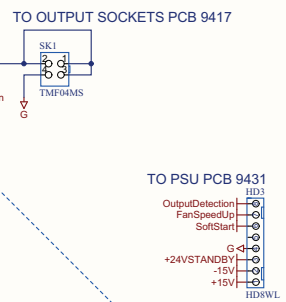
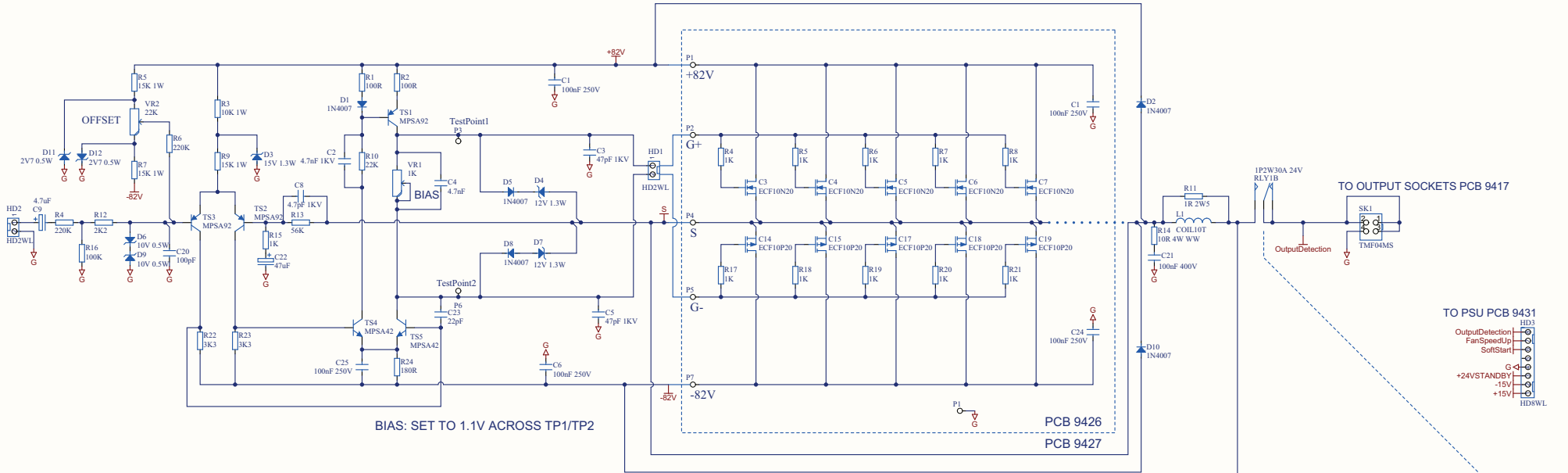


**Build Notes:**

**NXT Version:**  
 Miss out 9422/LN2, LN5, LN6  
 Miss out 9421/LN4, LN5, LN6  
 Fit 9422/LN3, LN4, LN7  
 Fit 9421/LN1, LN2, LN3  
 ALL SWITCHES TO BE FITTED WITH BLUE LEDES

**NXF Version:**  
 Miss out 9422/LN3, LN4, LN7  
 Miss out 9421/LN1, LN2, LN3  
 Fit 9422/LN2, LN5, LN6  
 Fit 9421/LN4, LN5, LN6  
 ALL SWITCHES TO BE FITTED WITH RED LEDES

+ All capacitors to be 100V minimum rating unless stated otherwise  
 FR Flame proof resistor  
 \* Must only be replaced with same type and rating  
 ! Indicates safety critical component  
 ! Must only be replaced with approved type  
 ALL CONNECTOR VIEWS LOOKING INTO PIN FACE  
 RELAYS SHOW UNENERGISED

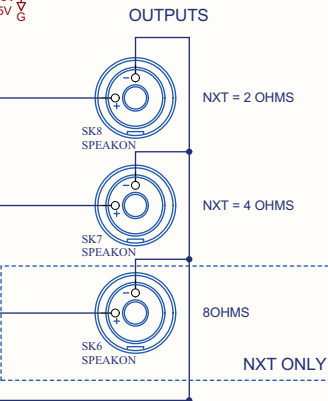
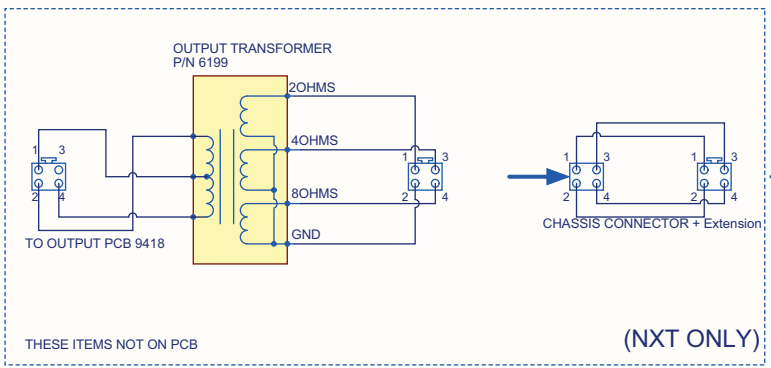
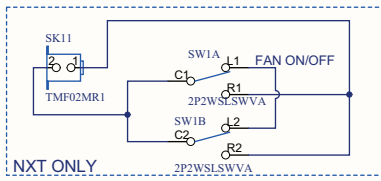
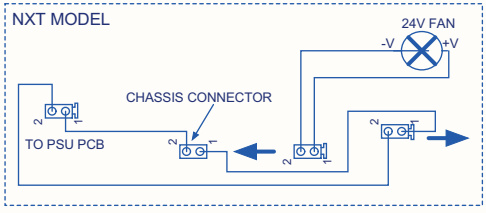
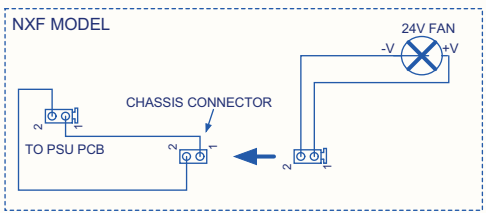
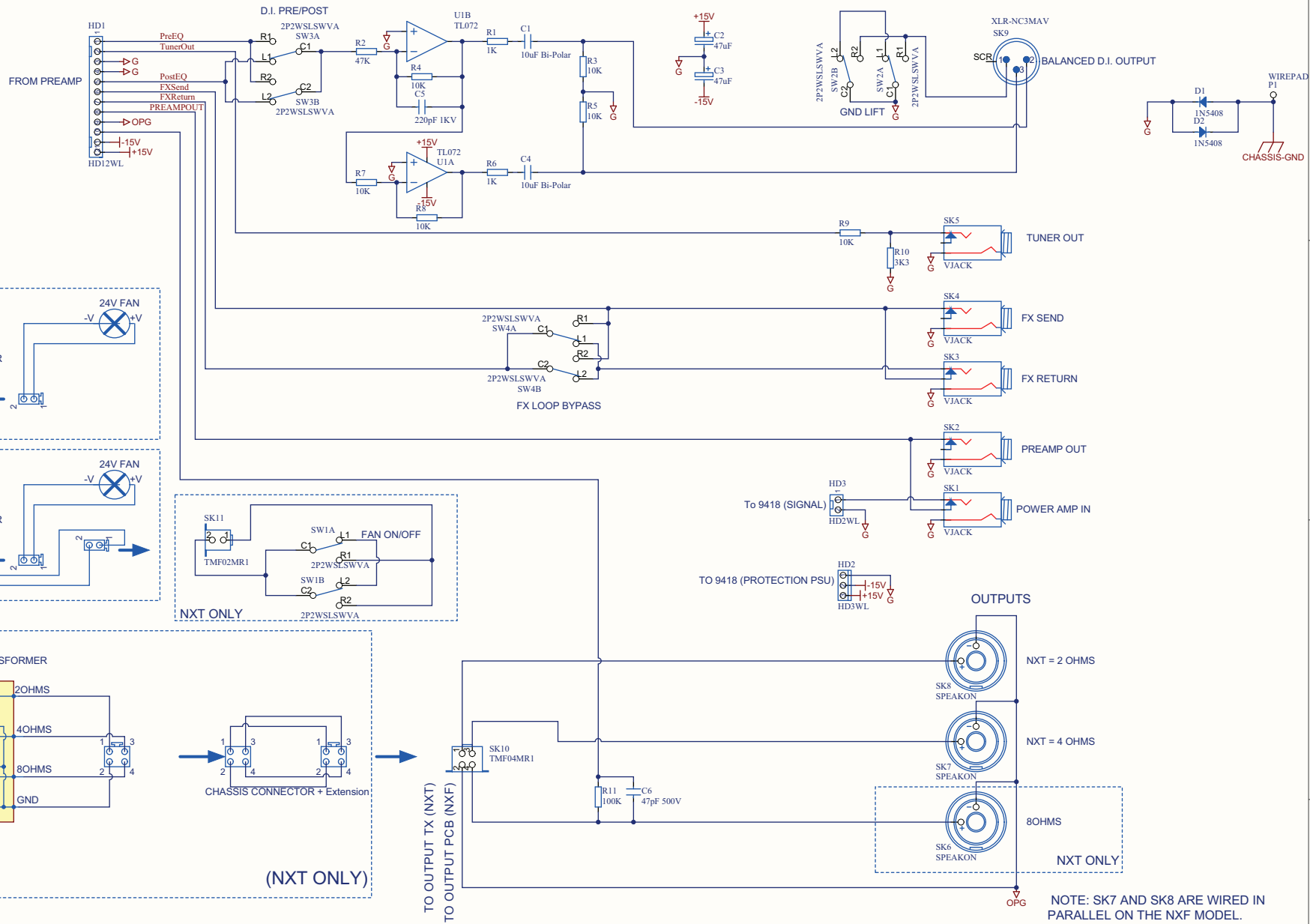


Title: NXF Output module		
Size: A3	Number: 9427	Revision: 3
Date: 07/02/2007	Time: 12:39:06	Sheet 1 of 1
Original File: 9427.SchDoc		

SteelPark Road  
Coombs Wood  
Industrial Estate West  
Halesowen  
UK  
www.laney.co.uk

# Laney

POWER TO THE MUSIC

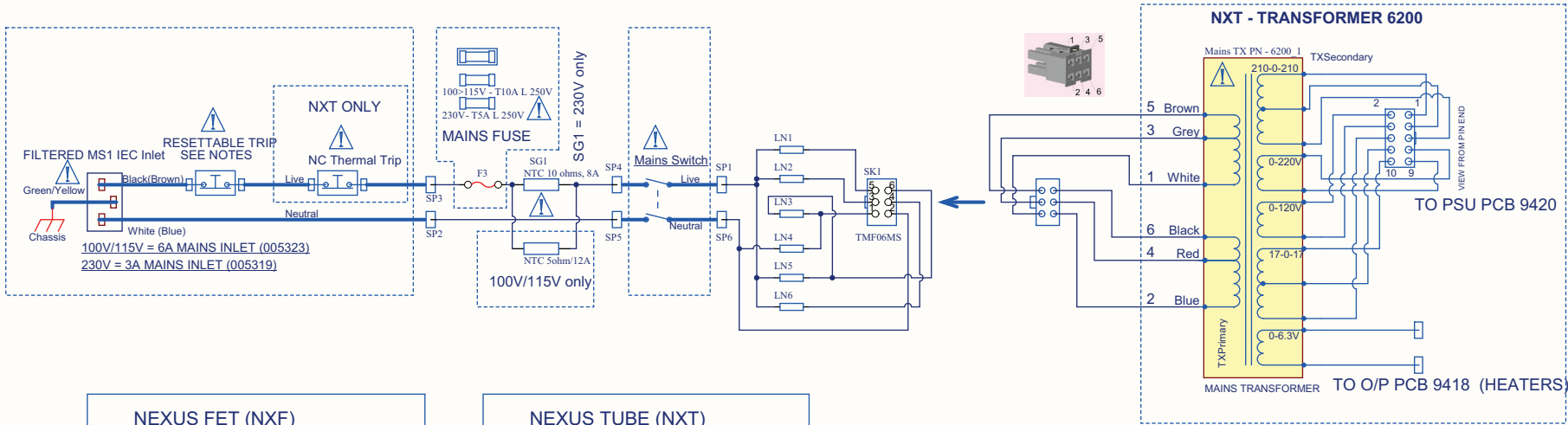


NOTE: SK7 AND SK8 ARE WIRED IN PARALLEL ON THE NXF MODEL. YOU MAY DRIVE THE AMP TO A MINIMUM OF 4 OHMS TOTAL IMPEDANCE ON THE NXF.

- All capacitors to be 100V minimum rating unless stated otherwise
- Flame proof resistor  
Must only be replaced with same type and rating
- Indicates safety critical component  
Must only be replaced with approved type

Title: NXF/NXT Output Socket PCB		
Size: A3	Number: 9417	Revision: 4
Date: 20/02/2008	Time: 11:59:42	Sheet 1 of 1
Original File: 9417.SchDoc		

Steelpark Road  
 Coombs Wood  
 Industrial Estate West  
 Halesowen  
 UK  
[www.laney.co.uk](http://www.laney.co.uk)



**NEXUS FET (NXF)**  
**VOLTAGE SELECTION**

~230V FIT LN1, LN3 only  
 MAINS FUSE = T5A L (005531)  
 RESETTABLE TRIP = 5A (007426)  
 MAINS INLET = 3A (005319)  
 SG1 = 10 OHM 8A (003031)

~115V FIT LN1, LN4, LN5 only  
 MAINS FUSE = T10A L (540023)  
 RESETTABLE TRIP = 10A (005325)  
 MAINS INLET = 6A (005323)  
 SG1 = 5 OHM 12A (003032)

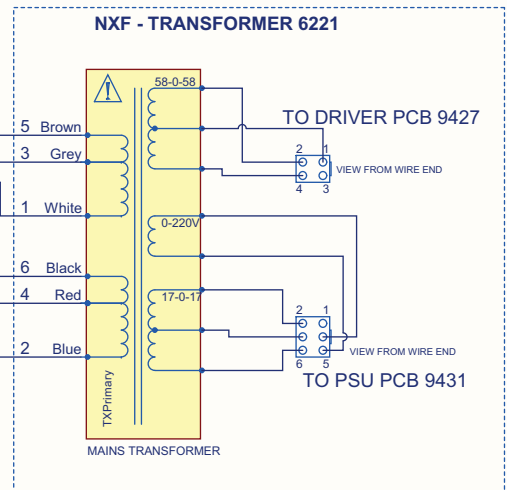
~100V FIT LN2, LN4, LN6 only  
 MAINS FUSE = T10A L (540023)  
 RESETTABLE TRIP = 10A (005325)  
 MAINS INLET = 6A (005323)  
 SG1 = 5 OHM 12A (003032)

**NEXUS TUBE (NXT)**  
**VOLTAGE SELECTION**

~230V FIT LN1, LN3 only  
 MAINS FUSE = T5A L (005531)  
 RESETTABLE TRIP = 5A (007426)  
 MAINS INLET = 3A (005319)  
 SG1 = 10 OHM 8A (003031)

~115V FIT LN1, LN4, LN5 only  
 MAINS FUSE = T10A L (540023)  
 RESETTABLE TRIP = 10A (005325)  
 MAINS INLET = 6A (005323)  
 SG1 = 5 OHM 12A (003032)

~100V FIT LN2, LN4, LN6 only  
 MAINS FUSE = T10A L (540023)  
 RESETTABLE TRIP = 10A (005325)  
 MAINS INLET = 6A (005323)  
 SG1 = 5 OHM 12A (003032)

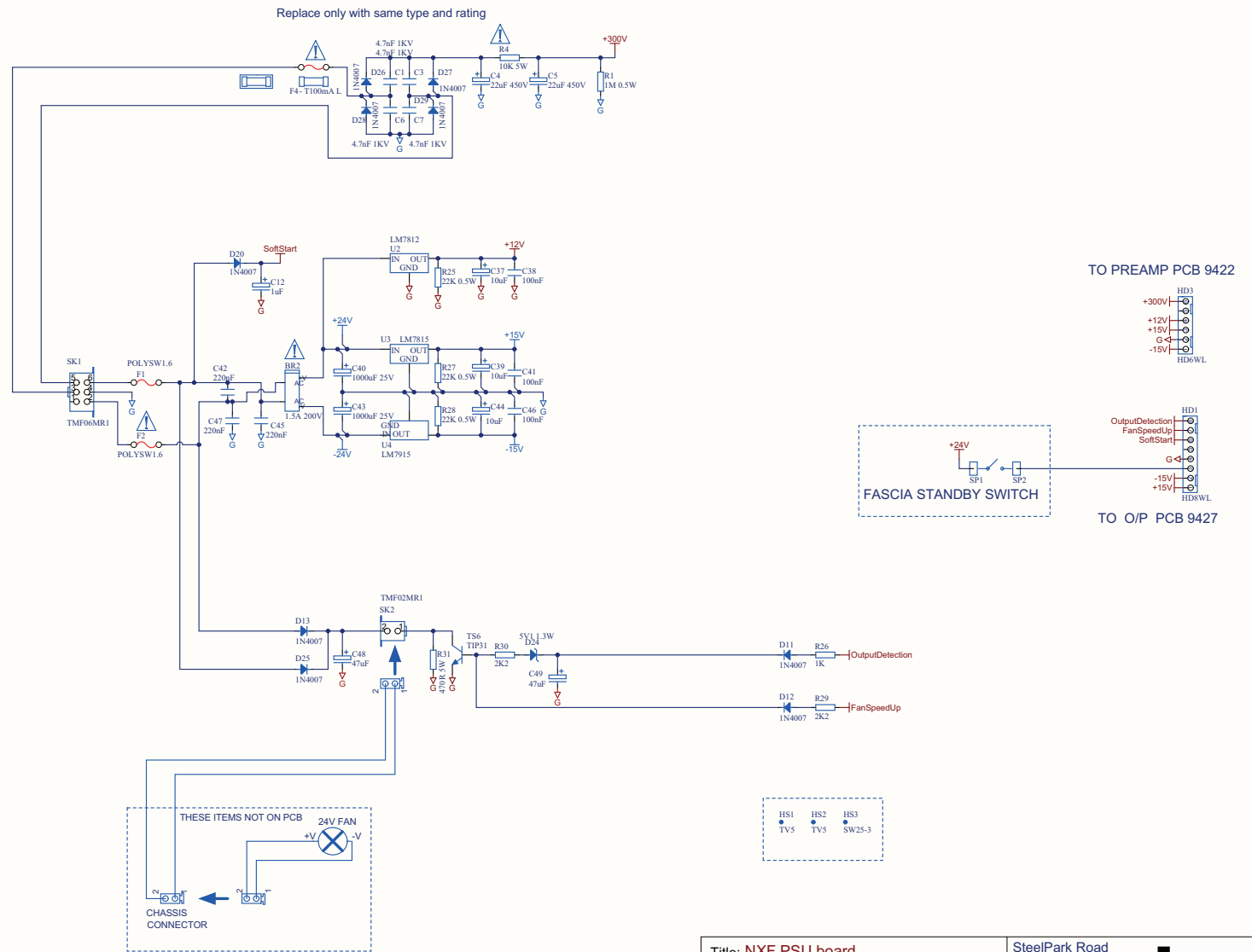


ITEMS WITHIN DASHED AREA ARE NOT ON PCB OR ARE OPTIONS

- ⎓ All capacitors to be 100V minimum rating unless stated otherwise
  - FP Flame proof resistor  
Must only be replaced with same type and rating
  - ⚠ Indicates safety critical component  
Must only be replaced with approved type
- ALL CONNECTOR VIEWS LOOKING INTO PIN FACE

Title: NXF/NXT MAINS SELECTION PCB			Steelpark Road Coombs Wood Industrial Estate West Halesowen UK www.laney.co.uk	
Size: A3	Number: 9433	Revision: 4		
Date: 26/02/2008	Time: 17:17:35	Sheet 1 of 1		
Original File: 9433.SchDoc				

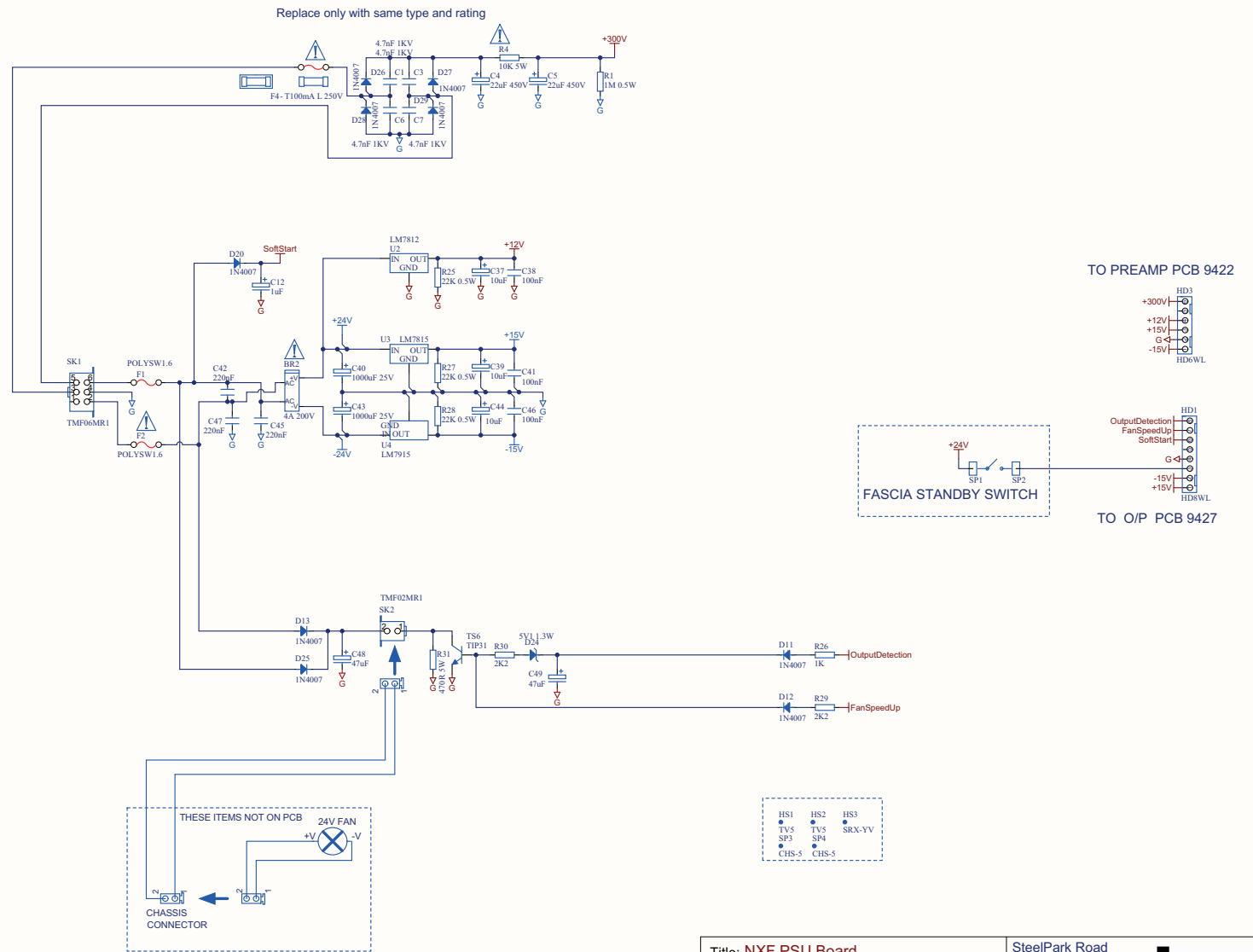




Title: NXF PSU board		
Size: A3	Number: 9431	Revision: 3
Date: 15/08/2007	Time: 09:56:24	Sheet 1 of 1
Original File: 9431.SchDoc		

SteelPark Road  
 Coombs Wood  
 Industrial Estate West  
 Halesowen  
 UK  
[www.laney.co.uk](http://www.laney.co.uk)

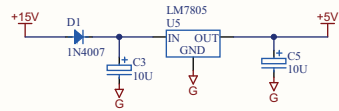
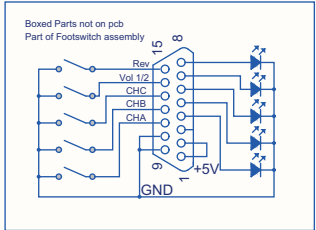
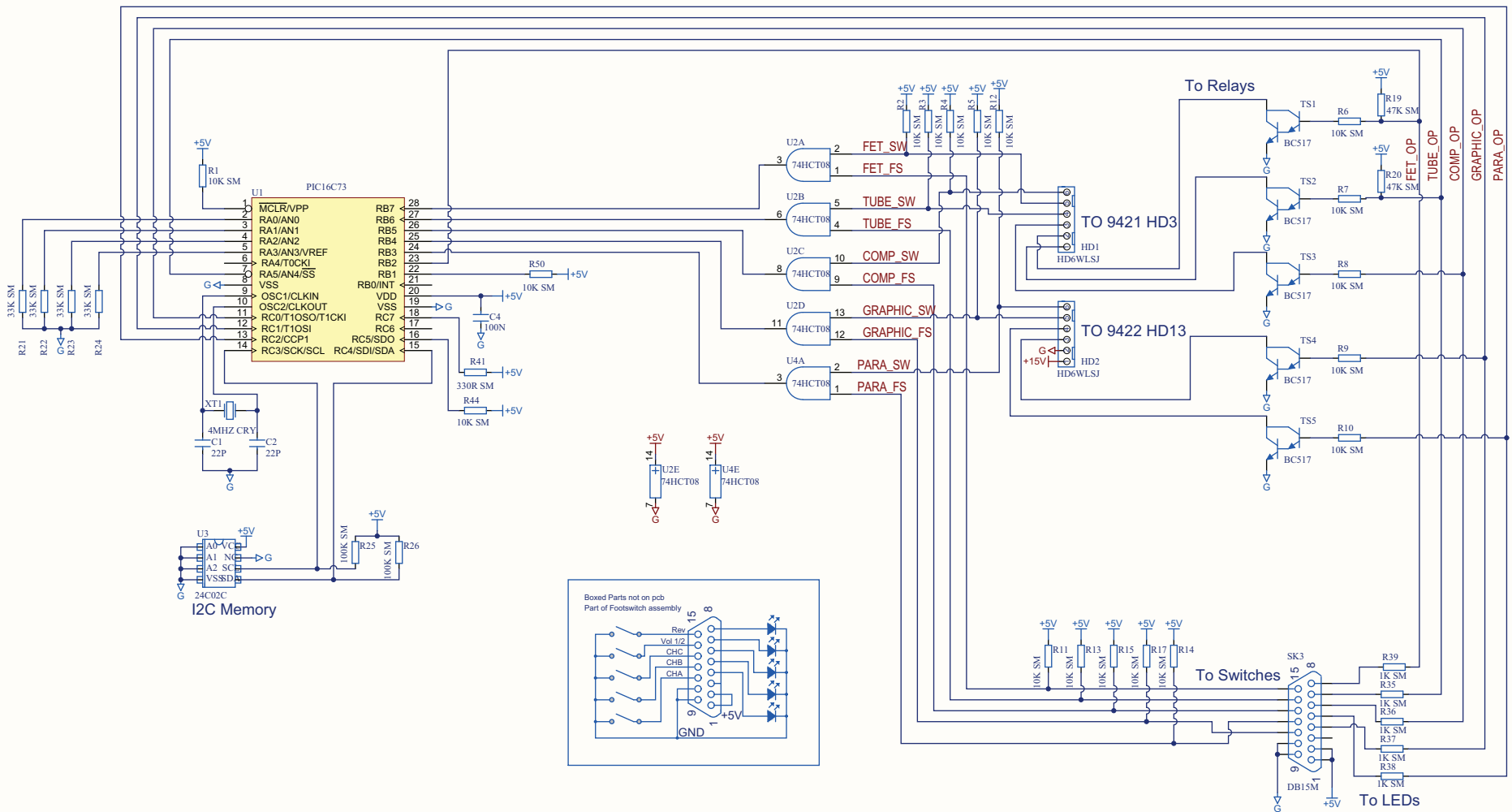
**Laney**  
 POWER TO THE MUSIC



Title: NXF PSU Board		
Size: A3	Number: 9431	Revision: 4
Date: 25/02/2008	Time: 16:07:59	Sheet 1 of 1
Original File: 9431.SchDoc		



SteelPark Road  
 Coombs Wood  
 Industrial Estate West  
 Halesowen  
 UK  
[www.laney.co.uk](http://www.laney.co.uk)

**Laney**  
 POWER TO THE MUSIC



**Mech Items**

- PCB1    PCB2
- •
- SUPPORT SUPPORT

 Flame proof resistor  
 Must only be replaced with same type and rating  
 Indicates safety critical component  
 Must only be replaced with approved type

Title: Nexus Footswitch Controller		
Size: A3	Number: 9419	Revision: 3
Date: 20/02/2008	Time: 15:20:05	Sheet 1 of 1
Original File: 9419.Sch		

Steelpark Road  
 Coombs Wood  
 Industrial Estate West  
 Halesowen  
 UK  
 www.laney.co.uk

**Laney**  
 POWER TO THE MUSIC

Nexus Bass Amplifiers can be adapted to run from different voltages by making changes in three places.

1. The Power Switch
2. Mains Inlet & Resettable Trip
3. The Voltage Selection PCB

### 2. Mains Inlet & Resettable Trip;

The mains inlet & resettable trips must be changed as set out in the table below for the various voltages.

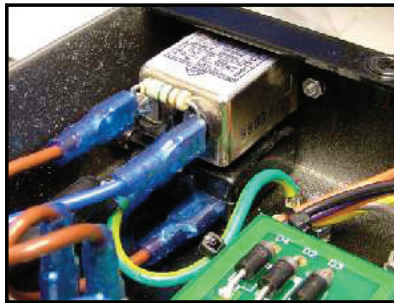
The items are located at the rear of the amplifier as in the photo.

The Mains Inlet is secured by 2 x M3 screws, nuts & washers, & the resettable trip is secured by 1 x hex nut.

3A  
005319



6A  
005323



5A  
007426



10A  
005325



	NXT		NXF	
	100-115V	230V	100-115V	230V
EMI Filtered Mains Inlet	6A - 005323	3A - 005319	6A - 005323	3A - 005319
Resettable Trip	10A - 005325	5A - 007426	10A - 005325	5A - 007426

### 1. Power switch;

In general appearance the 2 switches look the same, but use 007305 for 230V & 007435 for 100 -115V range.



007305

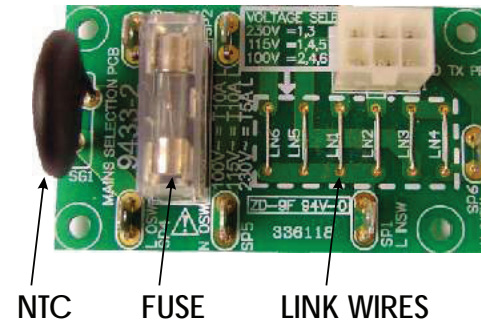


007435

### 3. Voltage Selection PCB;

The Voltage Selection PCB is located in the front of the chassis by the power & standby switch & is secured by 4 self tapping screws.

The fuse, NTC & link wires, on the PCB must be configured for the required voltage as set out in the table.

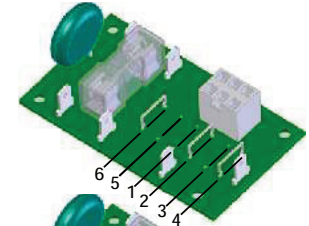


NTC

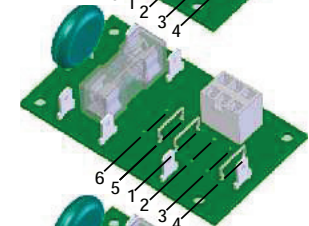
FUSE

LINK WIRES

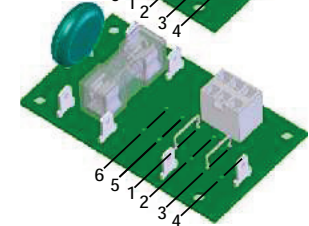
100V



115V



230V



	LINK WIRES						FUSE	NTC
	1	2	3	4	5	6		
100V		*		*		*	T10A L 540023	SURGE GUARD 003032 12A
115V	*			*	*		T10A L 540023	SURGE GUARD 003032 12A
230V	*		*				T5A L 005531	SURGE GUARD 003031 8A

Model No. NXF (Nexus Fet)				
SPARES ITEM	DESCRIPTION	PART No.		
Mains Transformer	100-230V	5600-6221 NXF Mains Transformer	006221	
Switch	Standby	DPST Black Rocker Switch	530027	
	Power 230V	DPST Double Width Red Illuminated Rocker Switch	007305	
	Power 100/120V	DPST Double Width Red Illuminated Rocker Switch	007435	
Resettable Trip	100-120V	Resettable Trip 10A	005325	
	230V	Resettable Trip 5A	007426	
	All	100 Degree Thermal Trip	007402	
PCBs	9417	NXF Output PCB Complete (2 Socket)	007396	
		Tuner out, Fx	6.3 Vertical Insulated Jack Skt	
		Send/Return, Power Amp Out, Preamp In		
		D.1. Out	Male XLR Socket PCB Mount (NON-Chassis Gnd Type)	
		Loudspeakers	Speakon Combi Connector	
		Gnd Lift, Pre-Eq, Bypass, Fan	Vertical Slide Switch	
		Switch		
		9421	NXF Input Preamp (Red LED) PCB Complete	007328
		Pots	Fet Gain	22K Lin 6mm Spline
			Tube Gain	100K Log 6mm Spline
		Tube Level	100K Log 6mm Spline	
		Compressor	100K Lin 6mm Spline	
		Deep	100K Lin 6mm Spline	
		Pot Bracket	005127	
	Switch	Sub	2P2W Illuminated Latching Push Switch (Red)	
		Pad		
		Compressor On	2P2W Illuminated NON-Latching Push Switch	
		Tube On, Fet On	(Red)	
	Sockets	Input	6.3 Mono Jack Skt standoff type	
	Safety	Resistor 10R 4W	005097	
			007395	
9422		NXT Tube Preamp (Red LED) PCB Complete	007326	
		Pots	Bass	22K Lin Centre Detent 6mm Spline
			Pot Bracket	005127
			Treble	22K Lin Centre Detent 6mm Spline
			Lo-Mid Freq	100K Antilog 6mm Spline Dual
			Lo-Mid Level	22K Lin Centre Detent 6mm Spline
			Hi-Mid Freq	100K Antilog 6mm Spline Dual
			Hi-Mid Level	22K Lin Centre Detent 6mm Spline
			Presence	22K Lin Centre Detent 6mm Spline
			Pot Bracket	005127
		Switch	Graphic On	2P2W Illuminated NON-Latching Push Switch
			Paramid On	(Red)
		Safety	Resistor 22K 1W	001401
			Resistor 10K 5W	001714
			Capacitor 22uF 450V	007204
	9423	Slider	NXF Graphic EQ (Red LED) PCB Complete	007329
			10K Illuminated Slider (Red LED)	007399
9426		Safety	NXF Fet Mounting PCB Complete	
			Exicon 10N20 Lateral Mosfet	
			Exicon 10P20 Lateral Mosfet	
			K177 TO3 Koolpad	
9433		Safety	NXF/NXT Voltage selection PCB Complete	
			100-120V	
			230V	
			100-120V	
			230V	

PCBs	9431	NXF PSU PCB Complete	007330	
		Safety		
		1.5A 200V Bridge	003017	
		Resistor 10K 5W	001714	
		Resistor 470R 5W	001700	
		Capacitor- 1000uF 25V	002009	
		1.6A Polyswitch MF-R160-0-99	007403	
		T100mA Spiral wound 20mm	005586	
		9427	NXF Fet Driver PCB Complete	007333
		Safety		
	25A 600V Glass Passivated Bridge Rectifier	007400		
	Capacitor- 6800uF 100V	007404		
	Resistor 10R 4W	007395		
	9419	NXF/NXT footswitch Microcontroller PCB Complete	007315	
	9434	NXF/NXT Master Volume Support PCB Complete	007303	
Badge		Diecast Laney Badge (116mm)	007188	
		Badge Support Brkt	007296	
Control Knob		Small	007309-F	
		Large	007310-F	
		Push Switch	007311-F	
Mains Lead		Country Dependant		
		EMI Filtered Mains Inlet 6A	005323	
Mains Inlet Socket	100-120V	EMI Filtered Mains Inlet 3A	005319	
	230V			
Foot Switch		FS7 Footswitch	007321	
		Footswitch Lead 15 Pin "D" Type	005088	
Cabinet		Cabinet	007283	
		Covered Carcass only (No Fittings)	007284	
		Grill	007284	
		Top Grill	007285	
		Rear Grill	007285	
		Feet	007250	
Manual		25mm high 38mm round rubber feet	007262	
		Handle	007262	
		Bar Handle - Steel/Plastic - Top 90°	007035	
Tubes		Corner	007035	
		NXF User Manual	007338	
		Tube	005548	
		ECC83 Std	005548	
Fan		ECC83 Hi Grade	005570	
		Retainer	005027	
		ECC83 Small Clip	005027	
		NXF/NXT 24V DC Fan With TMF02FC Connector	007343	
		80mm Chrome Finger Guard	005555	