



# Service Manual

Created: 14 March 2015



## V-AMPIRE LX1200H

### 2 x 60-Watt Digital Guitar Modeling Amplifier Head

Specifications .....	2
PCB Schematic .....	3
Parts List .....	8
Exploded Drawing .....	23

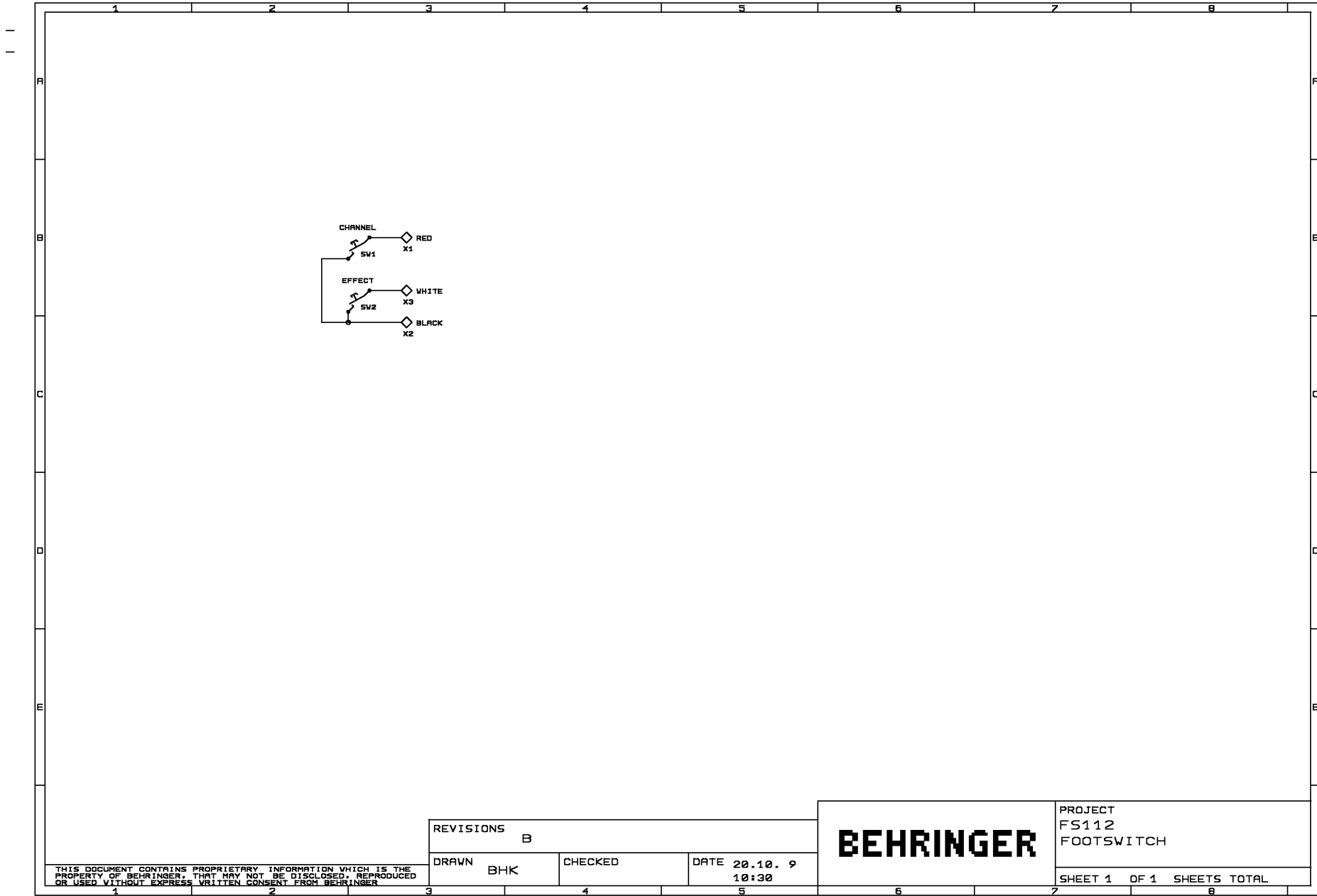
[behringer.com](http://behringer.com)

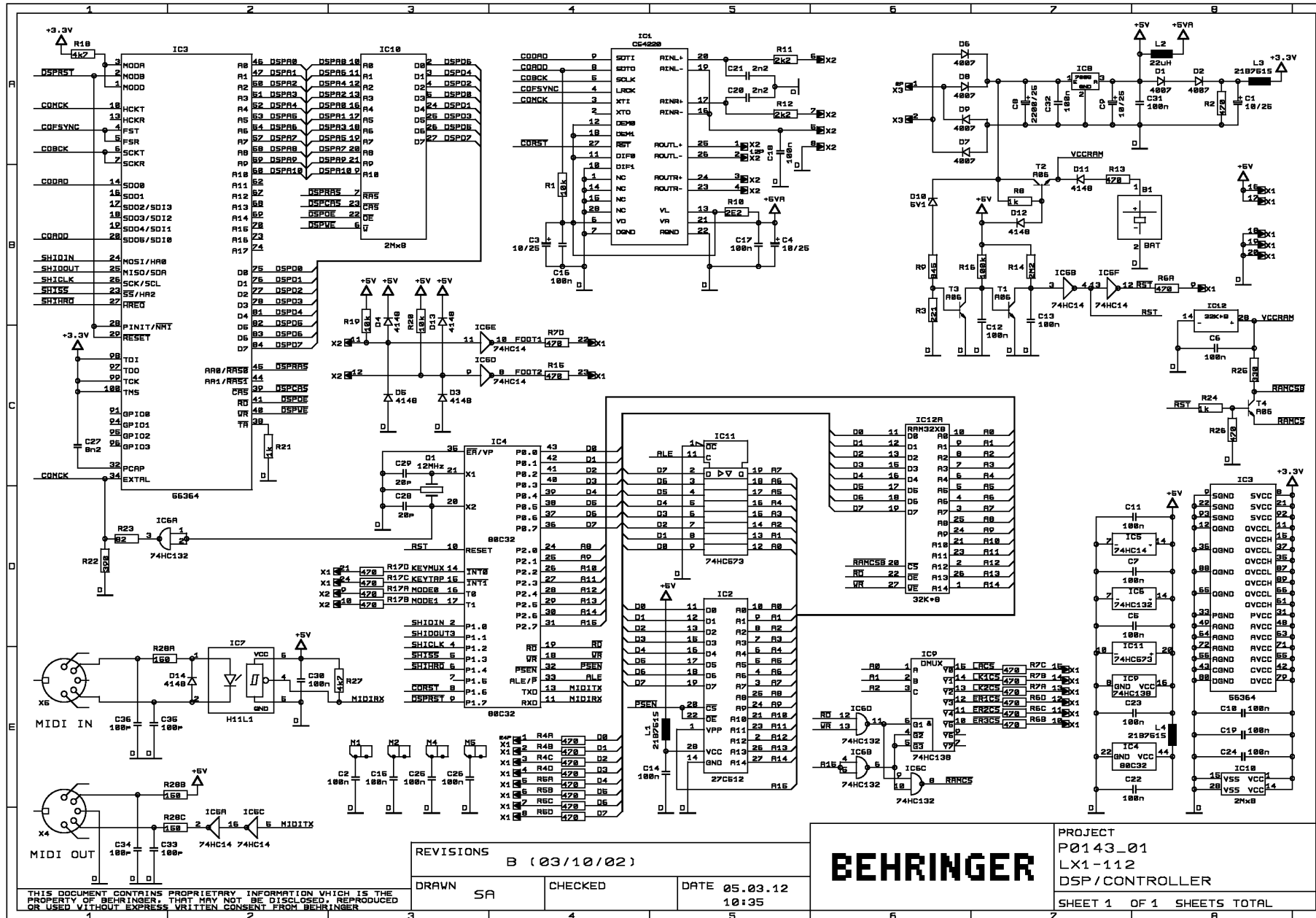


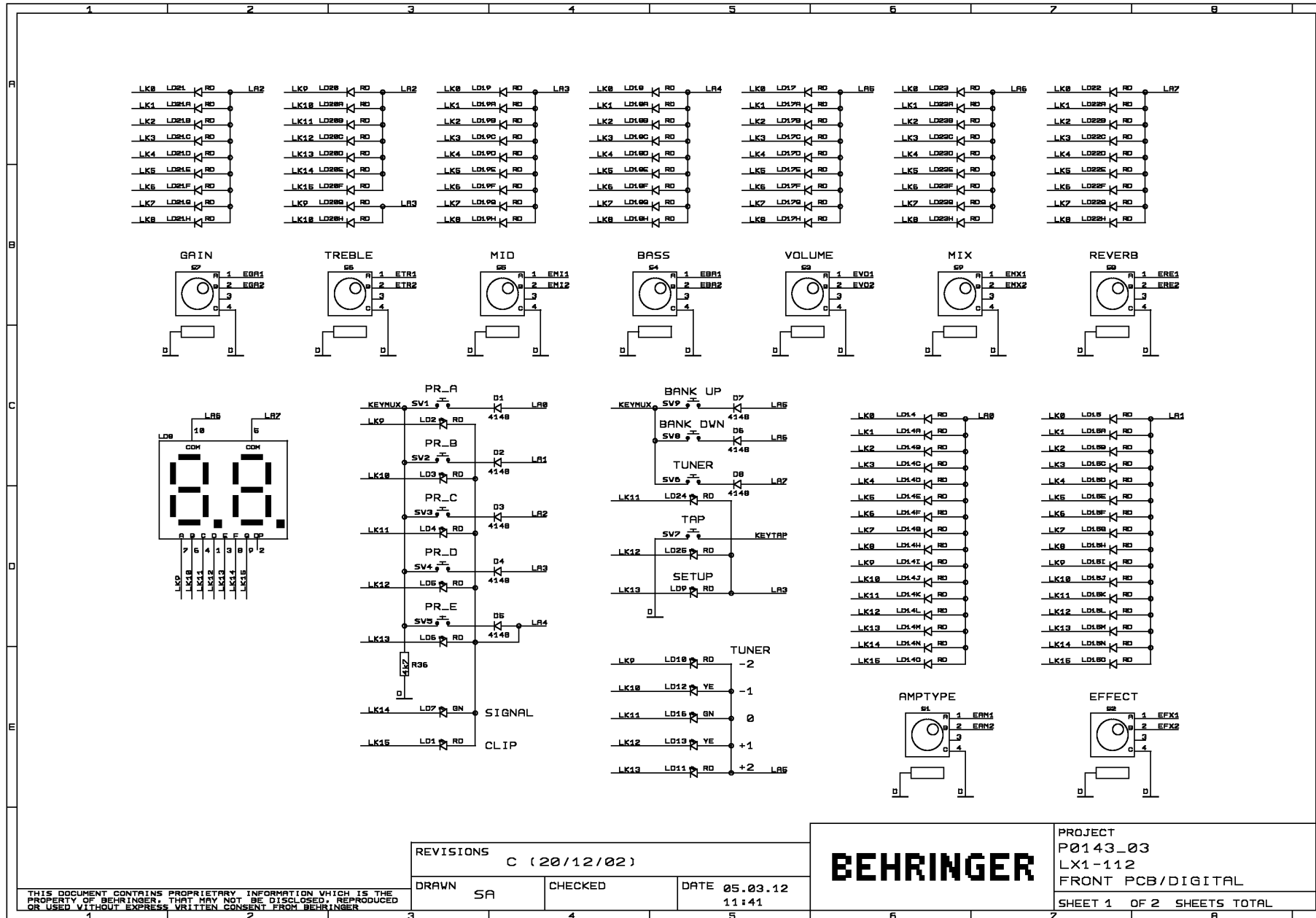
# V-AMPIRE LX1200H

## Specifications

- 32 authentic amp models, 15 speaker cabinet simulations, 16 multi-FX such as noise gate, compressor, wah-wah, modulation effects, delay, reverb etc.
- 120-Watt mono or 2 x 60-Watt stereo operation
- 125 memory locations, divided into 25 banks of 5 presets each
- Intuitive rotary controls with dedicated LED indicators
- 15 rear-panel connectors allow comprehensive routing to suit virtually any conceivable application—plus MIDI In, Out/Thru
- MIDI implementation includes program changes, control changes and SysEx, allowing complete MIDI automation through our free Windows editor software
- Balanced stereo XLR DI Out with ground lift and switchable ULTRA-G speaker simulation
- Pre DSP send/return for dry recording and wet monitoring
- Extremely low-noise instrument input ensures maximum guitar signal integrity
- Adjustable stereo Aux input for line-level signals (CD, soundcard, monitoring etc.)—can be re-configured to feed headphones only, for in-ear monitoring applications
- Frequency-compensated stereo Headphone output with adjustable volume
- Super-precise and adjustable auto-chromatic tuner
- High-quality components and exceptionally rugged construction ensure long life
- Conceived and designed by BEHRINGER Germany







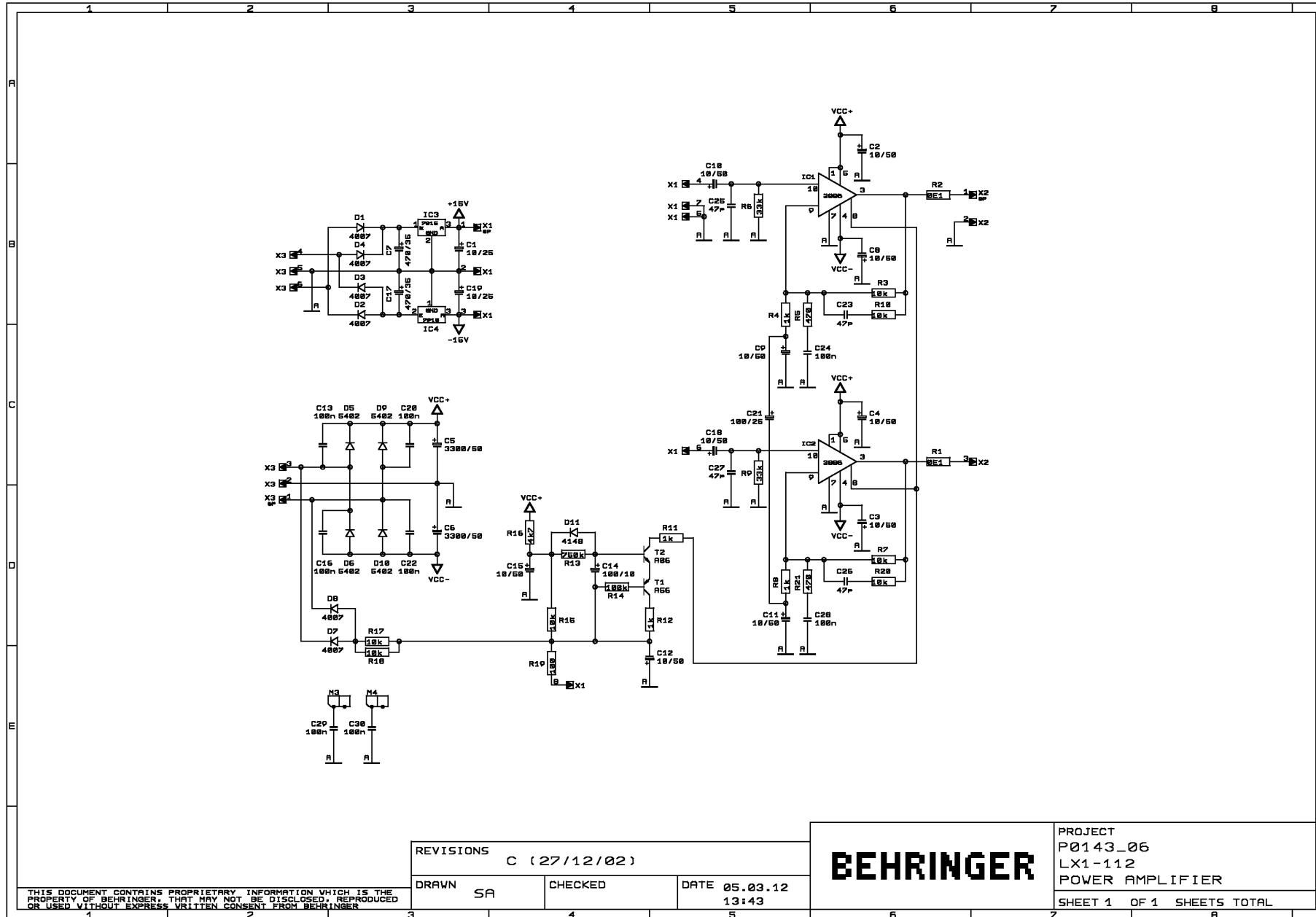
REVISIONS		
C (20/12/02)		
DRAWN	CHECKED	DATE
SA		05.03.12
		11:41

**BEHRINGER**

PROJECT  
P0143\_03  
LX1-112  
FRONT PCB/DIGITAL  
SHEET 1 OF 2 SHEETS TOTAL

THIS DOCUMENT CONTAINS PROPRIETARY INFORMATION WHICH IS THE PROPERTY OF BEHRINGER. THAT MAY NOT BE DISCLOSED, REPRODUCED OR USED WITHOUT EXPRESS WRITTEN CONSENT FROM BEHRINGER.





**Hi Pcb Assemblies**

	Quantity	Unit	S.Sku	M.Sku	Description	Reference Designators	Notes
1	1.0000	PC	Q05-14301-02465	A05-14301-02465	PCB ASSEMBLY:LX112 LX210 LX1200H;PCB:1;DSP;REV:B;HI;NO:203100		
2	1.0000	PC	Q05-14303-02467	A05-14303-02467	PCB ASSEMBLY:LX112 LX210 LX1200H;PCB:3;FRONT;REV:C;HI;NO:223120		
3	1.0000	PC	Q05-14304-02468	A05-14304-02468	PCB ASSEMBLY:LX112 LX210 LX1200H;PCB:4;INPUT;REV:C;HI;NO:224120		
4	1.0000	PC	Q05-14305-02469	A05-14305-02469	PCB ASSEMBLY:LX112 LX210 LX1200H;PCB:5;POTENTIOMETER;REV:C;HI;NO:225120		
5	1.0000	PC		A05-14306-02470	PCB ASSEMBLY:LX112 LX210 LX1200H;PCB:6;POWER-AMP;REV:C;HI;NO:230120		
6	1.0000	PC	Q05-31902-06957	A05-31902-06957	PCB ASSEMBLY:LX1200H;PCB:2;REAR;REV:C;HI;NO:306010		
7	1.0000	PC		A05-31906-03279	PCB ASSEMBLY:LX1200H;PCB:6;POWER-AMP;REV:C;HI;NO:230120		



Cable

	Quantity	Unit	S.Sku	M.Sku	Description	Reference Designators	Notes
1	0.3120	M		A74-00000-00708	WIRE,RAW FLAT CABLE;UL2651;AWG:28;POLES:8;GRAY;PIN1:RED;PITCH:1mm27		
2	0.2320	M		A74-00000-00712	WIRE,RAW FLAT CABLE;UL2651;AWG:28;POLES:12;GRAY;PIN1:RED;PITCH:1mm27		
3	0.2320	M		A74-00000-00724	WIRE,RAW FLAT CABLE;UL2651;AWG:28;POLES:24;GRAY;PIN1:RED;PITCH:1mm27		
4	0.0000	PC		A74-00020-22712	CABLE;FLAT;P2mm54;LENGTH:220mm;AWG:28;FC2/FD;+10/-0mm;POLES:12		
5	0.0000	PC		A74-00040-20724	CABLE;FLAT;P2mm54;LENGTH:220mm;AWG:28;FC2/FD;+10/-0mm;POLES:24		
6	0.0000	PC		A74-00160-30708	CABLE;FLAT;P2mm54;LENGTH:300mm;AWG:28;FC4/FD;+10/-0mm;POLES:08		
7	1.0000	PC		A74-90020-22712	CABLE;FLAT;P2mm54;LENGTH:220mm;ZEE;AWG:28;FC2/FD;+10/-0mm;ZEE;POLES:12	[4: {1.0}(X4)]	
8	1.0000	PC		A74-90040-20724	CABLE;FLAT;P2mm54;LENGTH:220mm;ZEE;AWG:28;FC2/FD;+10/-0mm;ZEE;POLES:24	[3: {1.0}(X5)]	
9	1.0000	PC		A74-90160-30708	CABLE;FLAT;P2mm54;LENGTH:300mm;ZEE;AWG:28;FC4/FD;+10/-0mm;ZEE;POLES:08	[LX1200H:2: {1.0}(X13)]	
10	0.0000	PC		A81-05030-86742	WIRE HARNESS;LENGTH:50mm;AWG:26;P:2mm;JST;HOUSING-BOARD IN CONNECTOR;POLES:8;PIN1 RED/OTHERS BLK;		
11	1.0000	PC		A81-05030-86842	WIRE HARNESS;LENGTH:50mm;AWG:26;P:2mm;ZEE;HOUSING-BOARD IN CONNECTOR;POLES:8;PIN1 RED/OTHERS BLK;	[5: {1.0}(X1)]	
12	0.0000	PC		A81-12031-26742	WIRE HARNESS;LENGTH:120mm;AWG:26;P:2mm;SHS;HOUSING-BOARD IN CONNECTOR;POLES:12;PIN1 RED/OTHERS BLK		
13	1.0000	PC	Q81-12031-26842	A81-12031-26842	WIRE HARNESS;LENGTH:120mm;AWG:26;UL2468;P:2mm;SHS;ZEE;HOUSING-BOARD IN CONNECTOR;POLES:12;PIN1 RED/OTHERS BLK	[LX1200H:2: {1.0}(X6)]	
14	1.0000	PC		A88-30012-06088	CABLE;SPEAKER;LX1-112;LENGTH:300mm;ZEE;AWG:18;P:3mm96;JST;HOUSING-5mm STRIP/TIN;POLES:3;SPEC.NO:30331		
15	0.0000	PC		A88-30012-30331	CABLE;SPEAKER;LX1-112;LENGTH:300mm;AWG:18;P:3mm96;JST;HOUSING-5mm STRIP/TIN;POLES:3;SPEC.NO:30331		
16	1.0000	PC		A89-50031-25481	FOOTSWITCH CABLE;FS112;LENGTH:5000mm;F-CORE;POLES:3;COLOR:BLK;SPEC.NO:25481		
17	0.0000	PC		A76-18050-06505	CABLE;AC-CORD;LENGTH:180cm;VERSION:SAA;PLUG:HE105 ISOLATED;SAA H05VV-F 3x0.75mm2;CONN.HP-3;PANYU		(SAA)
18	1.0000	PC	Q76-15042-05624	A76-15042-05624	CABLE;AC-CORD;W/POLYBAG;LENGTH:150cm;H05VV-F3G0.75MM2;VERSION;UK;SPEC.NO.05624		(UK)
19	1.0000	PC	Q76-15212-03119	A76-15212-03119	CABLE;AC-CORD;W/POLYBAG;LENGTH:152cm;H05VV-F 3G 0.75MM2;VERSION;EU;SPEC.NO.03119		(EU)
20	1.0000	PC	Q76-18050-47490	A76-18050-47490	CABLE;AC-CORD;LENGTH:180cm;VERSION:SAA;PLUG:HE105 ISOLATED;SAA H05VV-F 3x0.75mm2;CONN.HP-3;SPEC.NO:47490		(SAA)
21	1.0000	PC	Q76-15222-06417	A76-15222-06417	CABLE;AC-CORD;W/POLYBAG;LENGTH:152cm;AWG:18;VERSION;UL;SPEC.NO:06417		(UL)
22	1.0000	PC	Q76-15032-55649	A76-15032-55649	CABLE;AC-CORD;CLASS II;W/POLYBAG;JAPAN;LENGTH:150cm;POLES:3;APPROVAL:PSE;JS1553 + VCTF 3x0.75mm2 + V1528		(HM)

Capacitor

	Quantity	Unit	S.Sku	M.Sku	Description	Reference Designators	Notes
1	1.0000	PC			CAP E;100uF;10V;PITCH:2mm5;5mm x 11mm;VERTICAL 12.7-15-9mm	[P0143:06: {1.0}(C14)]	*NOT available in DP
2	2.0000	PC			CAP E;10uF;25V;PITCH:2mm5;5mm x 11mm;VERTICAL 12.7-15-9mm	[P0143:06: {2.0}(C1,C19)]	*NOT available in DP
3	1.0000	PC			CAP E;100uF;25V;PITCH:2mm5;6mm x 12mm;VERTICAL 12.7-15-9mm	[P0143:06: {1.0}(C21)]	*NOT available in DP
4	10.0000	PC			CAP E;10uF;50V;PITCH:2mm5;5mm x 11mm;VERTICAL 12.7-15-9mm	[P0143:06: {10.0}(C2-C4,C8-C12,C15,C18)]	*NOT available in DP
5	4.0000	PC			CAP E;10uF;25V;PITCH:2mm5;5mm x 11mm;PRECUT:3mm2 - 0/+0mm2	[1: {4.0}(C1,C3-C4,C9)]	*NOT available in DP
6	2.0000	PC			CAP E;22uF;25V;PITCH:2mm5;5mm x 11mm;PRECUT:3mm2 - 0/+0mm2	[4: {2.0}(C5-C6)]	*NOT available in DP
7	8.0000	PC			CAP E;47uF;25V;PITCH:2mm5;5mm x 11mm;PRECUT:3mm2 - 0/+0mm2	[3: {1.0}(C10)]	*NOT available in DP
8	1.0000	PC			CAP E;2mF2;25V;PITCH:5mm;13mm x 21mm;PRECUT:3mm2 - 0/+0mm2	[1: {1.0}(C8)]	*NOT available in DP
9	2.0000	PC			CAP E;470uF;35V;PITCH:5mm;10mm x 20mm;PRECUT:3mm2 - 0/+0mm2	[6: {2.0}(C7,C17)]	*NOT available in DP
10	13.0000	PC			CAP E;10uF;50V;PITCH:2mm5;5mm x 11mm;PRECUT:3mm2 - 0/+0mm2	[3: {1.0}(C9)]	*NOT available in DP
11	2.0000	PC			CAP E;3mF3;50V;PITCH:7mm5;18mm x 36mm;PRECUT:3mm2 - 0/+0mm2	[6: {2.0}(C5-C6)]	*NOT available in DP
12	4.0000	PC			CAP E;47uF;63V;PITCH:2mm5;6mm3 x 11mm;PRECUT:3mm2 - 0/+0mm2	[LX1200H:2: {4.0}(C11-C14)]	*NOT available in DP
13	2.0000	PC			CAP CER;20pF;50V;20%;SMT603	[1: {2.0}(C28-C29)]	*NOT available in DP
14	4.0000	PC			CAP CER;47pF;50V;5%;COG(NPO);SMT603	[4: {1.0}(C39)]	*NOT available in DP
15	26.0000	PC			CAP CER;100pF;50V;20%;SMT603	[1: {4.0}(C33-C36)]	*NOT available in DP
16	2.0000	PC			CAP CER;330pF;50V;20%;SMT603	[2: {2.0}(C21-C22)]	*NOT available in DP
17	4.0000	PC			CAP CER;470pF;50V;10%;SMT603	[2: {4.0}(C39-C42)]	*NOT available in DP
18	2.0000	PC			CAP CER;1nF;50V;10%;SMT603	[2: {2.0}(C44,C50)]	*NOT available in DP
19	10.0000	PC			CAP CER;2nF2;50V;10%;SMT603	[1: {2.0}(C20-C21)]	*NOT available in DP
20	1.0000	PC			CAP CER;8nF2;50V;10%;SMT603	[1: {1.0}(C27)]	*NOT available in DP
21	3.0000	PC			CAP CER;10nF;50V;10%;SMT805	[2: {3.0}(C16,C32,C43)]	*NOT available in DP
22	6.0000	PC			CAP CER;22nF;50V;10%;SMT805	[2: {6.0}(C23-C25,C31,C55-C56)]	*NOT available in DP
23	25.0000	PC			CAP CER;100nF;50V;+80/-20%;SMT805	[1: {22.0}(C2,C5-C7,C10-C19,C22-C26,C30-C32)]	*NOT available in DP
24	26.0000	PC			CAP CER;100nF;50V;X7R;10%;SMT805	[3: {15.0}(C16-C17,C27-C32,C36-C38,C40-C43)]	*NOT available in DP
25	4.0000	PC			CAP FILM;100nF;100V;MPF;10%;PITCH:5mm;BOX;VERTICAL 12.7-15-9mm	[P0143:06: {4.0}(C13,C16,C20,C22)]	*NOT available in DP
26	1.0000	PC			CAP FILM;10nF;50V;MPF;10%;PITCH:5mm;BOX;PRECUT:3mm1 +/- 0mm5	[4: {1.0}(C12)]	*NOT available in DP
27	1.0000	PC			CAP FILM;100nF;100V;MPF;10%;PITCH:5mm;BOX;PRECUT:3mm1 +/- 0mm5	[4: {1.0}(C11)]	*NOT available in DP

Circuit Protector

	Quantity	Unit	S.Sku	M.Sku	Description	Reference Designators	Notes
1	1.0000	PC	R22-01513-25001	B22-01513-25001	FUSE;2A5;250V;SLOW BLOW;H-TYPE;5mm x 20mm		(EU, UK, SAA)
2	1.0000	PC	R22-01515-00001	B22-01515-00001	FUSE;5A;250V;SLOW BLOW;H-TYPE;5mm x 20mm		(UL, HM)

**Coil**

	Quantity	Unit	S.Sku	M.Sku	Description	Reference Designators	Notes
1	1.0000	PC		B33-12206-00520	COIL;RADIAL;22uH;L:1mm91;(CW45-220K)	[1: {1.0}{L2}]	
2	3.0000	PC	R39-00000-03394	B39-00000-03394	COIL;SMD;BEAD;SMD0805;(BLM21BD751SN1D)	[1: {3.0}{L1,L3-L4}]	

**Connector**

	Quantity	Unit	S.Sku	M.Sku	Description	Reference Designators	Notes
1	3.0000	PC		B84-25006-06016	CRIMP TERMINAL;PITCH:3mm96;AWG24-26;A3961T1B-2C		
2	1.0000	PC	R84-30060-06009	B84-30060-06009	JACKET;FOR 6mm35 AMP CONNECTOR;PVC;STRAIGHT;DIAMETER:4mm		
3	1.0000	PC		B84-32050-05839	CRIMP CONNECTOR;AMP;RECEPTABLE;6mm3 x 7mm5;AWG 14-18;WIRE MOUNT;STRAIGHT;250 SERIES		
4	1.0000	PC		B84-42050-00155	CRIMP CONNECTOR;LUG;INNER DIA:4mm3;AWG 14-18;WIRE MOUNT;STRAIGHT		
5	2.0000	PC		B93-63007-49632	CONNECTOR;BARE JUMPER;WIRE DIAMETER:0mm7;LENGTH:30mm	[6: {2.0}{R1-R2}]	
6	1.0000	PC	R93-80000-01038	B93-80000-01038	CONNECTOR;BATTERY HOLDER;(H2611)	[1: {1.0}{PCB1}]	
7	2.0000	PC	R95-01320-03303	B95-01320-03303	CONNECTOR;XLR;SOCKET;MALE;STRAIGHT;POLES:3	[LX1200H:2: {2.0}{X7-X8}]	
8	1.0000	PC	R84-39000-33065	B84-39000-33065	CONNECTOR;AWG 14-16;CLOSED ENDED;W/ NYLON66 COVER;APPROVALS:UL-CSA		(EU, UL, UK, SAA)

**Diode**

	Quantity	Unit	S.Sku	M.Sku	Description	Reference Designators	Notes
1	12.0000	PC			DIODE;1N4007;DO41	[1: {6.0}{D1-D2,D6-D9}]	*NOT available in DP
2	4.0000	PC			DIODE;1N5402;DO201AD;TEMIC OR FC	[6: {4.0}{D5-D6,D9-D10}]	*NOT available in DP
3	16.0000	PC			DIODE;LL4148;LL34;TEMIC OR FC	[1: {7.0}{D3-D5,D11-D14}]	*NOT available in DP
4	1.0000	PC			DIODE;ZMM05V1;SMD1206	[1: {1.0}{D10}]	*NOT available in DP

**Display**

	Quantity	Unit	S.Sku	M.Sku	Description	Reference Designators	Notes
1	1.0000	PC		C28-27040-28239	DISPLAY;LED;HEIGHT:0in4;PATTERN:8.8.;RD;4264V-10/RP197;PINS;19mm7	[3: {1.0}{LD12}]	

Hardware

	Quantity	Unit	S.Sku	M.Sku	Description	Reference Designators	Notes
1	6.0000	PC			NAIL;DIA:1mm12;LENGTH:10mm;18-GAUGE (0.49*0.40) FINISH;GALVANIZED		*NOT available in DP
2	50.0000	PC			NAIL;CROWN:2mm2;WIDTH:1mm27;THICKNESS:1mm0;LENGTH:25mm;18-GAUGE (0.49*0.40) FINISH;GALVANIZED		*NOT available in DP
3	16.0000	PC			NAIL;STAPLE;CROWN 10mm;LEGLNGTH:10mm;WIDTH:1.2mm;THICKNESS:0mm6;FINISH: GALVANIZED		*NOT available in DP
4	90.0000	PC			NAIL;STAPLE;CROWN 10mm;LEGLNGTH:6mm;WIDTH:1.2mm;THICKNESS:0mm6;FINISH:G ALVANIZED		*NOT available in DP
5	5.0000	PC			CABLE TIE;NYLON;4in;COLOR:		*NOT available in DP
6	2.6400	G			THERM-GREASE;COLOR:WHT;SPEC.NO:09286		*NOT available in DP
7	4.6200	G			SCREWLOCK;SPEC.NO:01090		*NOT available in DP
8	1.0000	PC			HEX.NUT;INNER DIA;M3mm;SURFACE:ZINC		*NOT available in DP
9	5.0000	PC			HEX. NUT;INNER DIA;M4mm;SURFACE:ZINC		*NOT available in DP
10	2.0000	PC			T-NUT;INNER DIA;M5mm;W/PRONG;SURFACE:ZINC/BLACK		*NOT available in DP
11	1.0000	PC			HEX. NUT;INNER DIA;M7mm;THICKNESS:2mm;SURFACE:ZINC/SILVER		*NOT available in DP
12	6.0000	PC			HEX. NUT;FOR JACK;M 3/8in;HEXWRENCH:11mm;THICKNESS:2mm;SURFACE:NICKEL/SLV		*NOT available in DP
13	1.0000	PC			HEX. NUT;FOR JACK;M 3/8in;HEXWRENCH:11mm;THICKNESS:2mm4;SURFACE:NICKEL/BLA CK		*NOT available in DP
14	2.0000	PC			HEX. NUT;FOR JACK;M 3/8in;HEXWRENCH:11mm;THICKNESS:2mm4;SURFACE:NICKEL/SILV ER		*NOT available in DP
15	1.0000	PC			HEX. NUT;FOR JACK;M12;HEXWRENCH:14mm;THICKNESS:2mm;SURFACE:NICKEL/B LACK		*NOT available in DP
16	8.0000	PC			WASHER;RUBBER;10mm*2.5mm;COLOR:BLK;DST.NO:001;DPT.NO:00 105;(SC-WA-01-045x100x025-RU-BLK-REVA.DWG)		*NOT available in DP
17	1.0000	PC	V87-00100-13981	F87-00100-13981	GASKET1;P0143;DST.NO:001;DPT.NO:13981;(P0143-GASKET1- REVA.DWG)		
18	2.0000	PC		F87-01000-12070	PAD;RUBBER;6mm*2mm5;COLOR:BLK;DWG.NO:12070;(R14-GUITAR- RUBBERPAD-REVB.DWG)		
19	20.0000	PC			SCREW;A;4 MM;13 MM;TRUSS;3.94 MM;CHROME;PHILIPS REC.;1.5 MM;A4*13mm;PHILIPS		*NOT available in DP
20	4.0000	PC			SCREW;A2mm6*13mm;HEAD:FLAT;INSERT:PHILIPS REC.;SURFACE:BLACK/ZINC		*NOT available in DP
21	9.0000	PC			SCREW;M3mm*6mm;HEAD:PAN;INSERT:PHILIPS REC.;SURFACE:SILVER/ZINC		*NOT available in DP
22	10.0000	PC			SCREW;M3mm*6mm;HEAD:PAN;INSERT:PHILLIPS REC.;SURFACE:BLACK/ZINC		*NOT available in DP
23	6.0000	PC			SCREW;M3mm*6mm;PITCH:0mm5;HEAD:FLAT;INSERT:PHILIPS REC.;SURFACE:BLACK/ZINC		*NOT available in DP
24	4.0000	PC			SCREW;BT3mm*8mm;HEAD:PAN;INSERT:PHILIPS REC.;SURFACE:ZINC		*NOT available in DP
25	4.0000	PC			SCREW;BT3mm*8mm;HEAD:PAN;INSERT:PHILLIPS REC.;SURFACE:BLACK/ZINC		*NOT available in DP
26	2.0000	PC			SCREW;M3mm*8mm;HEAD:PAN;INSERT:PHILLIPS REC.;SURFACE:BLACK/ZINC		*NOT available in DP
27	2.0000	PC			SCREW;M3mm*10mm;HEAD:PAN;INSERT:PHILIPS REC.;SURFACE:BLACK/ZINC		*NOT available in DP
28	1.0000	PC			SCREW;M3mm*11mm;HEAD:BINDING;INSERT:PHILIPS REC.;SURFACE:BLACK/ZINC		*NOT available in DP

	Quantity	Unit	S.Sku	M.Sku	Description	Reference Designators	Notes
29	6.0000	PC			SCREW;M4mm*6mm;HEAD:PAN;INSERT:PHILIPS REC.;SURFACE:BLACK/ZINC		*NOT available in DP
30	1.0000	PC			SCREW;M4mm*10mm;HEAD:BINDING;INSERT:PHILIPS REC.;SURFACE:SILVER/ZINC		*NOT available in DP
31	4.0000	PC			SCREW;M4mm*16mm;HEAD:BINDING;INSERT:PHILIPS REC.;SURFACE:BLACK/ZINC		*NOT available in DP
32	6.0000	PC			SCREW;M4mm*30mm;HEAD:OVAL;INSERT:PHILIPS REC.;SURFACE:BLACK/ZINC		*NOT available in DP
33	4.0000	PC			SCREW;A4mm*32mm;HEAD:FLAT;INSERT:PHILIPS REC.;SURFACE:BLACK/ZINC		*NOT available in DP
34	4.0000	PC			SCREW;A4mm*32mm;HEAD:PAN WASHER;INSERT:PHILIPS REC.;SURFACE:BLACK/ZINC		*NOT available in DP
35	4.0000	PC			SCREW;M4mm*40mm;HEAD:OVAL;INSERT:PHILIPS REC.;SURFACE:BLACK/ZINC		*NOT available in DP
36	4.0000	PC			SCREW;A5mm*18mm;HEAD:PAN;INSERT:PHILIPS REC.;SURFACE:BLACK/ZINC		*NOT available in DP
37	2.0000	PC			SCREW;M5mm*25mm;HEAD:PAN;INSERT:PHILIPS REC.;SURFACE:BLACK/ZINC		*NOT available in DP
38	2.0000	PC		F89-13000-00002	INSULATION SHEET;GLIMMER;TO3886 W/HOLE		
39	1.0000	PC			SHIELD01;PCB;LX1-112;DWG.NO:31802;(LX1-112-PCBSHIELD01-REVB.DWG)		*NOT available in DP
40	1.0000	PC			SHIELD02;PCB;LX1-112;DWG.NO:30810;(LX1-112-PCBSHIELD02-REVA.DWG)		*NOT available in DP
41	1.0000	PC			SILICA GEL;MASS;30g;SPEC.NO:30QB-BB2001-4		*NOT available in DP
42	2.0000	PC			SPRING;CYLINDRICAL;F5112;6mm*14mm8;CARBON STEEL;DWG. NO:04288;(R14-FCB1010-SPRING-REVA.DWG)		*NOT available in DP
43	2.0000	PC			STUD;THREAD-DIA;3mm;LENGTH:11mm;INT/INT		*NOT available in DP
44	0.0300	M			SHRINKING TUBE;INNER DIA;4mm;SPEC.NO:01098		*NOT available in DP
45	0.0900	M			SHRINKING TUBE;INNER DIA;6mm;SPEC.NO:01099		*NOT available in DP
46	3.0000	PC			WASHER;PLAIN;INNER DIA:3mm;OUTER DIA:6mm;THICKNESS:0mm5		*NOT available in DP
47	4.0000	PC			WASHER;PLAIN;INNER DIA:4mm;OUTER DIA:10mm;THICKNESS:1mm;PLATING;NICKEL		*NOT available in DP
48	1.0000	PC			WASHER;PLAIN;INNER DIA:7mm2;OUTER DIA:12mm;THICKNESS:0mm5;SURFACE:ZINC/SILVER		*NOT available in DP
49	2.0000	PC			WASHER;PLAIN;INNER DIA:9mm6;OUTER DIA:13mm;THICKNESS:0mm5;PLATING;NICKEL		*NOT available in DP
50	1.0000	PC			WASHER;PLAIN;INNER DIA:10mm1;OUTER DIA:14mm;THICKNESS:0mm45;PLATING;NI/BLACK		*NOT available in DP
51	1.0000	PC			WASHER;PLAIN;INNER DIA:12mm3;OUTER DIA:16mm6;THICKNESS:0mm5;SURFACE:NICKEL/BLACK		*NOT available in DP
52	5.0000	PC			WASHER;EXTERNAL TEETH;INNER DIA:3mm;OUTER DIA:6mm;THICKNESS:0mm5		*NOT available in DP
53	6.0000	PC			WASHER;EXTERNAL TEETH;INNER DIA:4mm;OUTER DIA:7mm;THICKNESS:1mm7		*NOT available in DP
54	10.0000	PC			WASHER;DONUT;INNER DIA:5mm5;OUTER DIA:16mm;THICKNESS:2mm6;PLATING;BLACK/ZINC		*NOT available in DP
55	1.0000	PC		F97-17000-04145	SHEET;FOAM;FOOTSWITCH;F5112;W/ DURABLE ADHESIVE;DWG.NO:04145;(R14-GX112-FOAM-REVA.DWG)		
56	1.0000	PC			BUSHING;CABLE;F5112;NYLON;DWG.NO:04141;(R14-CABLEBUSHING-REVA.DWG)		*NOT available in DP
57	2.0000	PC			BUSHING;MINIATURE;NYLON;DWG.NO:27886;(R20-SC-PLA_NYLBUSHM3x1_4.DWG)		*NOT available in DP
58	4.0000	PC			SCREW;M3mm*6mm;PITCH:0mm5;HEAD:FLAT;DIA:4mm5;INSERT:PHILIPS REC.;SURFACE:BLACK/ZINC		*NOT available in DP

## Ic

	Quantity	Unit	S.Sku	M.Sku	Description	Reference Designators	Notes
1	1.0000	PC	S60-54422-00528	C60-22422-00528	IC;AD/DA;V4220M;SSOP	[1: {1.0}]{IC1}	
2	0.0000	PC		C60-54422-00528	IC;AD/DA;CS4220;SOP		
3	2.0000	PC	S61-55388-61311	C61-55388-61311	IC;POWER AMP;LM3886;T		
4	5.0000	PC		C73-00000-29050	IC;OPAMP;SMD;SOP;8;BA4580RF	[4: {1.0}]{IC7}	
5	3.0000	PC	S73-58007-40514	C73-31007-40514	IC;OPAMP OPAMP;TL074;SOP;	[2: {3.0}]{IC2-IC3,IC7}	
6	1.0000	PC	S73-58007-22208	C73-58007-22208	IC;OPAMP OPAMP;TL072;SOP;BRAND:ST ONLY	[4: {1.0}]{IC6}	
7	1.0000	PC		C73-59458-00408	IC;OPAMP OPAMP;NJM4580L;SIP	[4: {1.0}]{IC1}	
8	0.0000	PC	S73-59458-00508	C73-59458-00508	IC;OPAMP OPAMP;NJM4580;SOP		
9	1.0000	PC	S77-05107-03110	C77-05107-03110	IC;VOLT.REGULATOR;7805F;FULLPACK;TO220	[1: {1.0}]{IC8}	
10	1.0000	PC	S77-15107-03110	C77-15107-03110	IC;VOLT.REGULATOR;7815F;FULLPACK;TO220	[6: {1.0}]{IC3}	
11	1.0000	PC	S77-15207-03110	C77-15207-03110	IC;VOLT.REGULATOR;7915F;FULLPACK;TO220	[6: {1.0}]{IC4}	
12	1.0000	PC	T17-06009-06041	D17-06009-06041	IC;DRAM;2M x 8 3.3V;60ns;FPM;SOJ28-400	[1: {1.0}]{IC10}	
13	1.0000	PC	T18-96636-41800	D18-96636-41800	IC;DSP;56364;TQFP	[1: {1.0}]{IC3}	
14	1.0000	PC	T22-31001-40514	D22-31001-40514	IC;LOGIC;74HC14;SOP	[1: {1.0}]{IC5}	
15	1.0000	PC	T22-31013-20514	D22-31013-20514	IC;LOGIC;74HC132;SOP	[1: {1.0}]{IC6}	
16	1.0000	PC	T22-31013-80516	D22-31013-80516	IC;LOGIC;74HC138;SOP	[1: {1.0}]{IC9}	
17	3.0000	PC	T22-31024-40520	D22-31024-40520	IC;LOGIC;74HC244;SOP	[3: {3.0}]{IC2,IC5,IC9}	
18	1.0000	PC	T22-31027-30520	D22-31027-30520	IC;LOGIC;74HC273;SOP	[3: {1.0}]{IC3}	
19	1.0000	PC	T22-31057-30520	D22-31057-30520	IC;LOGIC;74HC573;SOP	[1: {1.0}]{IC11}	
20	2.0000	PC	T24-84627-30520	D24-84627-30520	IC;MICROCONTROLLER;TPIC6B273;SOP	[3: {2.0}]{IC4,IC8}	
21	1.0000	PC	T24-92321-60244	D24-92321-60244	IC;MICROCONTROLLER;80C32-16;PLCC	[1: {1.0}]{IC4}	
22	1.0000	PC	T27-01501-15670	D27-01501-15670	IC;EPROM;27C512-150TP;DIP;OTP	[1: {1.0}]{IC2}	
23	1.0000	PC	T29-07005-00470	D29-07005-00470	IC;SRAM;(STANDBY;32K x 8 5V;70ns;LOW POWER;SOP28;<5uA)	[1: {1.0}]{IC12}	
24	2.0000	PC	T30-06405-30516	D30-06405-30516	IC;SWITCH/MUX;CD4053-SB1;SOP;MOT/THOMSON ONLY;SOP	[2: {2.0}]{IC4-IC5}	

## Led

	Quantity	Unit	S.Sku	M.Sku	Description	Reference Designators	Notes
1	2.0000	PC		E10-23565-00575	LED HIB;2mm x 4mm;GREEN	[3: {2.0}]{LD7,LD16}	
2	2.0000	PC		E10-29585-00577	LED HIB;2mm x 4mm;YELLOW	[3: {2.0}]{LD8,LD13}	
3	4.0000	PC		E12-27630-00576	LED;2mm x 4mm;RD	[3: {4.0}]{LD1,LD9-LD11}	
4	7.0000	PC		E12-57630-00591	LED;RD;3mm ROUND NO BOTTOM RING	[3: {7.0}]{LD2-LD6,LD24-LD25}	

**Metal Part**

	Quantity	Unit	S.Sku	M.Sku	Description	Reference Designators	Notes
1	1.0000	PC		A62-07400-18216	METAL;BOTTOM;FS112G;BLACK;DWG.NO:18216;(R14-GX-FOOTBOTTOM-REVC.DWG)		
2	1.0000	PC		A63-00300-11554	METAL;HEATSINK;P0143;ALU;EXTRUSION;ANODIZING;BLACK;DST.NO:3;DPT.NO:11554;(LX1-112-HEATSINK-REVC.DWG)		
3	1.0000	PC		A63-02000-26332	METAL;HEATSINK;P0154;DWG.NO:26332;(LX1 PRO-SP-HEATSINK-REVA.DWG)		
4	1.0000	PC	Q65-00200-01677	A65-00200-01677	METAL;BELT;GX-SERIES;DST.NO:002;DPT.NO:01677;(R14-MET-BELT-REVB.DWG)		
5	1.0000	PC		A65-00300-00287	METAL;PCB HOLDER;LX1-112;DST.NO:003;DPT.NO:00287;(LX1-112-PCBHOLDER01-REVC.DWG)		
6	2.0000	PC		A65-02500-28207	METAL;CORNER;STEEL;CHROME PLATED;002;DWG.NO:28207;(MCORNER-BEG002-REVC.DWG)		
7	1.0000	PC		A65-02500-28208	METAL;CORNER;STEEL;CHROME PLATED;007;DWG.NO:28208;(MCORNER-BEG007-REVE.DWG)		
8	1.0000	PC		A65-02500-28209	METAL;CORNER;STEEL;CHROME PLATED;008;DWG.NO:28209;(MCORNER-BEG008-REVD.DWG)		
9	4.0000	PC		A65-02500-30273	METAL;CORNER;STEEL;CHROME PLATED;DWG.NO:30273;(MCORNER-BEG001-REVE.DWG)		
10	2.0000	PC		A65-04700-04125	METAL;HANDLE FIXATION;BG-SERIES;(STAINLESS) STEEL;DWG.NO:04125;(R14-MET_H-COVER-REVA.DWG)		
11	2.0000	PC		A65-15000-04134	METAL;SPACER;LENGTH:4mm4;HOLE DIA:3mm5;DWG.NO:04134;(R14-FS112-SPACER-REVA.DWG)		
12	1.0000	PC		J02-00000-63942	METAL;POA5N;SECC 1.6mm;COVER;STAMPING;SPRAYING;BLACK;D020		
13	1.0000	PC		J02-00700-30837	METAL;TOP CABINET;LX1200H;MATERIAL:SECC 1.2;PRINTED;FST.NO:007;DPT.NO:30837;(LX1-112-TOP-CABINET-REVD.DWG)		
14	1.0000	PC		J02-00700-30917	METAL;BACK REAR;LX1200H;PRINTED;FST.NO:007;DPT.NO:30917;(LX1-112-REAR-CABINET-REVF.DWG)		

Plastic Part

	Quantity	Unit	S.Sku	M.Sku	Description	Reference Designators	Notes
1	4.0000	PC	W51-00300-06264	G51-00300-06264	RUBBER FOOT;ROUND;BIG;DWG.NO:06264;(R14-RUBFOOT_WASHER-REVA.DWG)		
2	1.0000	PC	W52-00500-09353	G52-00500-09353	KNOB;SWITCH;UB-S;DST.NO:005;DPT.NO:09353;(UB-S_SWKNOB-REVE.DWG)		
3	1.0000	PC	W52-20500-01697	G52-20500-01697	KNOB;POT;BLACK;DWG.NO:01697;(R14-MX-KNB004-REVD.DWG)		
4	1.0000	PC	W52-20500-28076	G52-20500-28076	KNOB;POT;LX1PRO;BLACK;DWG.NO:28076;(LX1PRO-PKNOB01-REVD.DWG)		
5	2.0000	PC	W52-80500-09382	G52-80500-09382	KNOB;SWITCH;FOOTPEDALS;BLACK;DWG.NO:09382;(R14-GUITAR-SWITCHKNOB1-REVA.DWG)		
6	9.0000	PC	W52-90500-28075	G52-90500-28075	KNOB;ENCODER;LX1PRO;BLACK;DWG.NO:28075;(LX1PRO-ENCKNOB01-REVD.DWG)		
7	1.0000	PC	W53-14000-01976	G53-14000-01976	PLASTIC;SPACER;ABS;BLACK;LENGTH:14MM2;(SWITCHSPACER14_2MM.DWG)		
8	1.0000	PC		G53-55203-46662	SPEAKER STRIP;PVC;LENGTH:742mm;THICKNESS:1mm3;W/ SILVER ROPE;EFFECTIVE WIDTH:8mm2;BEAD RADIUS:2mm13		
9	1.0000	PC		G56-00000-31551	PLASTIC;FILLET;LX1-112;DWG.NO:31551;(LX1-112-PLASTIC_FILLET-REVA.DWG)		
10	1.0000	PC	W58-00200-01081	G58-00200-01081	PLASTIC;HANDLE;P0357;PVC;EXTRUSION;BLACK;DST.NO:002;DPT.NO:01081;(R14-PLA-BELT-REVB.DWG)		
11	1.0000	PC		G58-00400-11799	PLASTIC;LED FRAME 08;LX1PRO;PC-385;DST.NO:004;DPT.NO:11799;(LX1PRO-LEDFRAME08-REVD.DWG)		
12	7.0000	PC	W58-00400-11802	G58-00400-11802	PLASTIC;LED FRAME 09;LX1PRO;PC-385;DST.NO:004;DPT.NO:11802;(LX1PRO-LEDFRAME09-REVD.DWG)		
13	2.0000	PC	W58-00400-14417	G58-00400-14417	PLASTIC;LED FRAME 16;LX1PRO;MATERIAL:PC-385;DST.NO:004;DPT.NO:14417;(LX1PRO-LEDFRAME16-REVD.DWG)		
14	7.0000	PC		G58-00500-09352	PLASTIC;LED FRAME;VAMP;TYP:01;ABS;DST.NO:005;DPT.NO:09352;(VAMP-LEDFRAME-1-REVE.DWG)	[3: {7.0}(LD2-LD6,LD24-LD25)]	
15	2.0000	PC		G58-00800-01124	PLASTIC;ENCODER WINDOW 16;LX1PRO;DST.NO:008;DPT.NO:01124;(LX1PRO-ENCWIN16-REVD.DWG)		
16	8.0000	PC		G58-00900-01123	PLASTIC;ENCODER WINDOW 09;LX1PRO;DST.NO:009;DPT.NO:01123;(LX1PRO-ENCWIN09-REVD.DWG)		
17	2.0000	PC		G58-13100-28126	PLASTIC;TKNOB WINDOW;LX1 PRO;ABS;DWG.NO:28126;(LX1PRO-TKWIN-REVB.DWG)		
18	7.0000	PC	W58-13700-26525	G58-13700-26525	PLASTIC;TKNOB WINDOW;LX1 PRO;ACRYL;DWG.NO:26525;(LX1PRO-TKWIN-REVB.DWG)		
19	1.0000	PC		G58-19100-28034	PLASTIC;7SEG FRAME;BLACK;LX1PRO;ABS;DWG.NO:28034;(LX1PRO-7SEGFRAME-BLK-REVC.DWG)		
20	1.0000	PC		G58-19100-28077	PLASTIC;7SEG FRAME;CHROME;LX1PRO;ABS;DWG.NO:28077;(LX1PRO-7SEGFRAME-CR-REVC.DWG)		
21	8.0000	PC		G58-38100-28645	PLASTIC;ENCODER FRAME 09;LX1PRO;ABS;BLACK;DWG.NO:28645;(LX1PRO-ENCFRAME09-REVD.DWG)		
22	2.0000	PC		G58-38100-28646	PLASTIC;ENCODER FRAME 16;LX1PRO;ABS;BLACK;DWG.NO:28646;(LX1PRO-ENCFRAME16-REVD.DWG)		
23	2.0000	PC		G58-53000-25624	PLASTIC;BASE;P0089;ABS;YS1285A;BLACK;FS112 FS114 FCB1010;COLOR:BLK;DWG.NO:25624;(R14-GUITAR-SWITCHBASE1-REVB.DWG)		
24	9.0000	PC		G58-53100-27680	PLASTIC;FRAME;P0154;ABS;COLOR:BLK;DWG.NO:2768;(LX1PRO-TKNFRAME-REVD.DWG)		
25	1.0000	PC	Y62-00100-00075	I62-00100-00075	KNOB;TACT SWITCH;LX1 PRO;BLACK;A-PRINTED;FILMSET NO:001;DWG.NO:00075;(LX1PRO-TKNOB-WL1-REVD.DWG)		



	Quantity	Unit	S.Sku	M.Sku	Description	Reference Designators	Notes
26	1.0000	PC	Y62-00200-00075	I62-00200-00075	KNOB;TACT SWITCH;LX1 PRO;BLACK;B;PRINTED;FILMSET NO:002;DWG.NO:00075;(LX1 PRO-TKNOB-WL1-REVD.DWG)		
27	1.0000	PC	Y62-00300-00075	I62-00300-00075	KNOB;TACT SWITCH;LX1 PRO;BLACK;C;PRINTED;FILMSET NO:003;DWG.NO:00075;(LX1 PRO-TKNOB-WL1-REVD.DWG)		
28	1.0000	PC	Y62-00400-00075	I62-00400-00075	KNOB;TACT SWITCH;LX1 PRO;BLACK;D;PRINTED;FILMSET NO:004;DWG.NO:00075;(LX1 PRO-TKNOB-WL1-REVD.DWG)		
29	1.0000	PC	Y62-00500-00075	I62-00500-00075	KNOB;TACT SWITCH;LX1 PRO;BLACK;E;PRINTED;FILMSET NO:005;DWG.NO:00075;(LX1 PRO-TKNOB-WL1-REVD.DWG)		
30	1.0000	PC		I62-00600-00075	KNOB;TACT SWITCH;LX1 PRO;BLACK;<;PRINTED;FILMSET NO:006;DWG.NO:00075;(LX1 PRO-TKNOB-WL1-REVD.DWG)		
31	1.0000	PC	Y62-00700-00075	I62-00700-00075	KNOB;TACT SWITCH;LX1 PRO;BLACK;>;PRINTED;FILMSET NO:007;DWG.NO:00075;(LX1 PRO-TKNOB-WL1-REVD.DWG)		
32	1.0000	PC	Y62-00800-00075	I62-00800-00075	KNOB;TACT SWITCH;LX1 PRO;BLACK;TAP;PRINTED;FILMSET NO:008;DWG.NO:00075;(LX1 PRO-TKNOB-WL1-REVD.DWG)		
33	1.0000	PC	Y62-00900-00075	I62-00900-00075	KNOB;TACT SWITCH;LX1 PRO;BLACK;TUNER;PRINTED;FILMSET NO:009;DWG.NO:00075;(LX1 PRO-TKNOB-WL1-REVD.DWG)		
34	1.0000	PC		I64-00300-26540	PLASTIC;LED DISPLAY WINDOW;LX1-112;ACRYL;PRINTED;FILMSET NO:003;DWG.NO:26540;(LX1 PRO-7SEGWIN-REVB.DWG)		
35	2.0000	PC	W58-40100-04229	I68-00000-40599	PLASTIC;P0000;HANDLECOVER;B001		
36	1.0000	PC	Y68-00100-27051	I68-00100-27051	PLASTIC;SMALL LOGO;ABS;SILVER;PRINTED;FILMSET NO:001;DWG.NO:27051;(GX112-PLALOGOSMALL-REVB.DWG)		

Plug Socket

	Quantity	Unit	S.Sku	M.Sku	Description	Reference Designators	Notes
1	1.0000	PC	W61-65208-03288	G61-65208-03288	BOX HEADER;POLES:08;2 ROW;STRAIGHT;PITCH:2mm54;SCM-08S	[6: {1.0}(X1)]	
2	1.0000	PC	W61-65212-03290	G61-65212-03290	BOX HEADER;POLES:12;2 ROW;STRAIGHT;PITCH:2mm54;SCM-12S	[LX1200H:2: {1.0}(X12)]	
3	1.0000	PC		G61-65224-03293	BOX HEADER;POLES:24;2 ROW;STRAIGHT;PITCH:2mm54;SCM-24S	[1: {1.0}(X1)]	
4	1.0000	PC	W61-75208-05767	G61-75208-05767	CABLE HEADER;POLES:8;2 ROW;IDE;STRAIGHT;PITCH:2mm54;FC-8P		
5	1.0000	PC	W61-75212-05332	G61-75212-05332	CABLE HEADER;POLES:12;2 ROW;IDE;STRAIGHT;PITCH:2mm54;FC-12P		
6	1.0000	PC		G61-75224-05413	CABLE HEADER;POLES:24;2 ROW;IDE;STRAIGHT;PITCH:2mm54;FC-24P		
7	1.0000	PC	W61-85208-08163	G61-85208-08163	TRANSITION PLUG;FLAT CABLE;POLES:8;ROWS:2;STRAIGHT;PITCH:2mm54;BLACK;FD-08P		
8	1.0000	PC	W61-85212-08163	G61-85212-08163	TRANSITION PLUG;FLAT CABLE;POLES:12;ROWS:2;STRAIGHT;PITCH:2mm54;BLACK;FD-12P		
9	1.0000	PC		G61-85224-08163	TRANSITION PLUG;FLAT CABLE;POLES:24;ROWS:2;STRAIGHT;PITCH:2mm54;BLACK;FD-24P		
10	1.0000	PC		G63-01028-01063	SOCKET;DIP;SPACING:15mm24		
11	6.0000	PC	W64-01211-03174	G64-01211-03174	PLUG;JACK STEREO 6mm3;STRAIGHT SOLDER;W/O MET.RNG.;MET.BUSH.;NO NUT/WASHER;(JY-6351G-02-250)	[LX1200H:2: {6.0}(X1-X2,X5,X9-X11)]	
12	1.0000	PC	W64-01232-34349	G64-01232-34349	PLUG;JACK STEREO 6mm3;STRAIGHT SOLDER;W MET.RNG.;PLA.BUSH.;NO NUT/WASHER;(JY-6336-01-090)	[4: {1.0}(X2)]	
13	3.0000	PC	W64-16212-00005	G64-16212-00005	PLUG;PCB;PLUG;JACK STEREO 6mm3;STRAIGHTPCB LUGS;NO NUT/WASHER;METAL BUSHING;(CHUNSHENG PJ-632HA)	[4: {1.0}(X3)]	
14	0.0000	PC	W67-20103-01396	G67-20103-01396	PLUG;AC SOCK;W FUSE;COLOR:BLK;POLES:03;(RONG-FENG RF-2004-C-4.8)		
15	1.0000	PC	W71-23108-03189	G71-23108-03189	WAFER;POLES:8;STRAIGHT;PITCH:2 mm;1 ROW;JS1125-08	[4: {1.0}(X6)]	
16	1.0000	PC	W71-23112-03192	G71-23112-03192	WAFER;POLES:12;STRAIGHT;PITCH:2 mm;1 ROW;JS1125-12	[1: {1.0}(X2)]	
17	1.0000	PC	W71-24102-20590	G71-24102-20590	WAFER;POLES:2;STRAIGHT;PITCH:2.5 mm;1 ROW;JS1001-02	[1: {1.0}(X3)]	
18	1.0000	PC	W71-27103-03195	G71-27103-03195	WAFER;POLES:3;STRAIGHT;PITCH:3.96 mm;1 ROW;JS4001-03	[6: {1.0}(X2)]	
19	1.0000	PC		G71-27106-03842	WAFER;POLES:6;STRAIGHT;PITCH:3.96 mm;1 ROW;JS4001-06	[6: {1.0}(X3)]	
20	20.0000	PC		G71-43000-05662	HOUSING;TERMINAL;SPH-002T-P0.5L		
21	1.0000	PC		G71-43108-05631	PLUG;HOUSING;P:2mm0;POLES:8;1 ROW;STRAIGHT;PITCH:2mm0		
22	1.0000	PC		G71-43112-05634	PLUG;HOUSING;P:2mm0;POLES:12;1 ROW;STRAIGHT;PITCH:2mm0		
23	1.0000	PC		G71-47103-05841	PLUG;HOUSING;A3961H00;PITCH:3mm96;POLES:3;ROWS:1;UL94-V0;STRAIGHT		
24	20.0000	PC	W71-80000-05663	G71-80000-05663	BD.-IN-CONN;TERMINAL;SAN-002T-0.8A		
25	1.0000	PC	W71-83108-05652	G71-83108-05652	BOARD-IN-CONNECTOR;POLES:8;ROWS:1;STRAIGHT;PITCH:2 mm		
26	1.0000	PC	W71-83112-05657	G71-83112-05657	BOARD-IN-CONNECTOR;POLES:12;ROWS:1;STRAIGHT;PITCH:2 mm		
27	2.0000	PC	W76-10580-03132	G76-10580-03132	PLUG;DIN;PLUG;FEMALE;POLES:5;ANGLED	[1: {2.0}(X4-X5)]	
28	1.0000	PC		G67-20103-01421	PLUG;AC SOCK;W FUSE;COLOR:BLK;POLES:03;(JACKSON JR-101-1F)		(EU, UL, UK, SAA, HM)
29	1.0000	PC		G67-20103-01421	PLUG;AC SOCK;W FUSE;COLOR:BLK;POLES:03;(JACKSON JR-101-1F)		

**Power Supply**

	Quantity	Unit	S.Sku	M.Sku	Description	Reference Designators	Notes
1	1.0000	PC	W83-02153-01037	G83-02153-01037	BUTTON-CELL;CAPACITY;215mAh;3V;SPEC.NO:01037;(CR2032)		
2	1.0000	PC	Z65-71436-43606	J65-71436-43606	TRAF0;EI-POWER;LX1-112;SA96-269M-3600AF-BEH2-R0;SAA 240V;STANDARD SUCCESS;SPEC.NO:43606		(UK, SAA)
3	1.0000	PC	Z65-71437-33052	J65-71437-33052	TRAF0;EI-96;LX1-112;SJ96-330M-2400DF-BEH1-R0;JP 100V;STANDARD SUCCESS;SPEC.NO:33052		(HM)
4	1.0000	PC	Z65-71439-31762	J65-71439-31762	TRAF0;EI-96;LX1-112;SD96-330M-2400DF-BEH1-R4;EU 120/230V;STANDARD SUCCESS;SPEC.NO:31762		(EU, UL)

**Quarz**

	Quantity	Unit	S.Sku	M.Sku	Description	Reference Designators	Notes
1	1.0000	PC	X65-10471-20000	H65-10471-20000	QUARZ;RESONATOR;12MHz;HC49U FUNDAMENTAL	[1: (1.0)(Q1)]	

Resistor

	Quantity	Unit	S.Sku	M.Sku	Description	Reference Designators	Notes
1	1.0000	PC			RESISTOR;CARBON;0ohm;5%;0W063;SMD603	[2: {1.0}(R17)]	*NOT available in DP
2	1.0000	PC			RESISTOR;CARBON;2ohm2;5%;0W063;SMD603	[1: {1.0}(R10)]	*NOT available in DP
3	2.0000	PC			RESISTOR;CARBON;47ohm;5%;0W063;SMD603	[4: {2.0}(R17-R18)]	*NOT available in DP
4	1.0000	PC			RESISTOR;CARBON;82ohm;5%;0W063;SMD603	[1: {1.0}(R23)]	*NOT available in DP
5	5.0000	PC			RESISTOR;CARBON;100ohm;5%;0W063;SMD603	[4: {1.0}(R13)]	*NOT available in DP
6	1.0000	PC			RESISTOR;CARBON;330ohm;5%;0W063;SMD603	[1: {1.0}(R25)]	*NOT available in DP
7	1.0000	PC			RESISTOR;CARBON;390ohm;5%;0W063;SMD603	[1: {1.0}(R22)]	*NOT available in DP
8	4.0000	PC			RESISTOR;CARBON;470ohm;5%;0W063;SMD603	[1: {2.0}(R15,R26)]	*NOT available in DP
9	7.0000	PC			RESISTOR;CARBON;1Kohm;5%;0W063;SMD603	[1: {3.0}(R8,R21,R24)]	*NOT available in DP
10	4.0000	PC			RESISTOR;CARBON;1Kohm5;5%;0W063;SMD603	[2: {4.0}(R9,R54,R63,R66)]	*NOT available in DP
11	4.0000	PC			RESISTOR;CARBON;2Kohm2;5%;0W063;SMD603	[1: {2.0}(R11-R12)]	*NOT available in DP
12	6.0000	PC			RESISTOR;CARBON;2Kohm7;5%;0W063;SMD603	[2: {6.0}(R23,R30,R32-R33,R41,R68)]	*NOT available in DP
13	12.0000	PC			RESISTOR;CARBON;4Kohm7;5%;0W063;SMD603	[1: {2.0}(R18,R27)]	*NOT available in DP
14	2.0000	PC			RESISTOR;CARBON;5Kohm6;5%;0W063;SMD603	[2: {2.0}(R27,R43)]	*NOT available in DP
15	1.0000	PC			RESISTOR;CARBON;6Kohm2;5%;0W063;SMD603	[4: {1.0}(R10)]	*NOT available in DP
16	2.0000	PC			RESISTOR;CARBON;8Kohm2;5%;0W063;SMD603	[2: {2.0}(R15-R16)]	*NOT available in DP
17	7.0000	PC			RESISTOR;CARBON;10Kohm;5%;0W063;SMD603	[1: {3.0}(R1,R19-R20)]	*NOT available in DP
18	1.0000	PC			RESISTOR;CARBON;12Kohm;5%;0W063;SMD603	[2: {1.0}(R42)]	*NOT available in DP
19	3.0000	PC			RESISTOR;CARBON;22Kohm;5%;0W063;SMD603	[4: {1.0}(R19)]	*NOT available in DP
20	2.0000	PC			RESISTOR;CARBON;33Kohm;5%;0W063;SMD603	[2: {2.0}(R49,R69)]	*NOT available in DP
21	2.0000	PC			RESISTOR;CARBON;39Kohm;5%;0W063;SMD603	[2: {2.0}(R4,R25)]	*NOT available in DP
22	4.0000	PC			RESISTOR;CARBON;47Kohm;5%;0W063;SMD603	[2: {4.0}(R10,R44-R45,R67)]	*NOT available in DP
23	1.0000	PC			RESISTOR;CARBON;100Kohm;5%;0W063;SMD603	[1: {1.0}(R16)]	*NOT available in DP
24	2.0000	PC			RESISTOR;CARBON;220Kohm;5%;0W063;SMD603	[2: {2.0}(R47-R48)]	*NOT available in DP
25	1.0000	PC			RESISTOR;CARBON;2Mohm2;5%;0W063;SMD603	[1: {1.0}(R14)]	*NOT available in DP
26	1.0000	PC			RESISTOR;METAL;221ohm;1%;0W063;SMD603	[1: {1.0}(R3)]	*NOT available in DP
27	1.0000	PC			RESISTOR;METAL;845ohm;1%;0W063;SMD603	[1: {1.0}(R9)]	*NOT available in DP
28	1.0000	PC			RESISTOR;METAL;10Kohm;1%;0W063;SMD603	[4: {1.0}(R12)]	*NOT available in DP
29	1.0000	PC			RESISTOR;METAL;1Mohm;1%;0W063;SMD603	[4: {1.0}(R11)]	*NOT available in DP
30	16.0000	PC			RESISTOR;CARBON;47ohm;5%;0W1;SMD805	[3: {16.0}(R20-R35)]	*NOT available in DP
31	1.0000	PC			RESISTOR;CARBON;100ohm;5%;0W1;SMD805	[6: {1.0}(R19)]	*NOT available in DP
32	2.0000	PC			RESISTOR;CARBON;470ohm;5%;0W1;SMD805	[1: {2.0}(R2,R13)]	*NOT available in DP
33	2.0000	PC			RESISTOR;CARBON;1Kohm;5%;0W1;SMD805	[6: {2.0}(R11-R12)]	*NOT available in DP
34	1.0000	PC			RESISTOR;CARBON;4Kohm7;5%;0W1;SMD805	[6: {1.0}(R16)]	*NOT available in DP
35	3.0000	PC			RESISTOR;CARBON;10Kohm;5%;0W1;SMD805	[6: {3.0}(R15,R17-R18)]	*NOT available in DP
36	2.0000	PC			RESISTOR;CARBON;33Kohm;5%;0W1;SMD805	[6: {2.0}(R6,R9)]	*NOT available in DP
37	1.0000	PC			RESISTOR;CARBON;100Kohm;5%;0W1;SMD805	[6: {1.0}(R14)]	*NOT available in DP
38	1.0000	PC			RESISTOR;CARBON;750Kohm;5%;0W1;SMD805	[6: {1.0}(R13)]	*NOT available in DP
39	2.0000	PC			RESISTOR;METAL;1Kohm;1%;0W1;SMD805	[6: {2.0}(R4,R8)]	*NOT available in DP
40	2.0000	PC			RESISTOR;METAL;10Kohm;1%;0W1;SMD805	[6: {2.0}(R3,R7)]	*NOT available in DP
41	1.0000	PC			RESISTOR;ARRAY;100ohm;SMD1206;CAY16-101J4	[2: {1.0}(R39)]	*NOT available in DP
42	1.0000	PC			RESISTOR;ARRAY;150ohm;SMD1206;CAY16-150J4	[1: {1.0}(R28)]	*NOT available in DP
43	5.0000	PC			RESISTOR;ARRAY;470ohm;SMD1206;CAY16-471J4	[1: {5.0}(R4-R7,R17)]	*NOT available in DP
44	2.0000	PC			RESISTOR;ARRAY;2Kohm7;SMD1206;CAY16-227J4	[2: {2.0}(R21,R37)]	*NOT available in DP
45	3.0000	PC			RESISTOR;ARRAY;4Kohm7;SMD1206;CAY16-472J4	[2: {3.0}(R36,R51,R57)]	*NOT available in DP

	Quantity	Unit	S.Sku	M.Sku	Description	Reference Designators	Notes
46	7.0000	PC			RESISTOR;ARRAY;10Kohm;SMD1206;CAY16-103J4	[3: {4.0}(R3-R5,R14)]	*NOT available in DP
47	2.0000	PC			RESISTOR;ARRAY;15Kohm;SMD1206;CAY16-153J4	[2: {2.0}(R58-R59)]	*NOT available in DP
48	2.0000	PC			RESISTOR;ARRAY;18Kohm;SMD1206;CAY16-183J4	[2: {2.0}(R20,R50)]	*NOT available in DP
49	1.0000	PC			RESISTOR;ARRAY;22Kohm;SMD1206;CAY16-223J4	[2: {1.0}(R1)]	*NOT available in DP
50	2.0000	PC			RESISTOR;ARRAY;39Kohm;SMD1206;CAY16-393J4	[2: {2.0}(R2,R35)]	*NOT available in DP
51	1.0000	PC			RESISTOR;ARRAY;68Kohm;SMD1206;CAY16-683J4	[2: {1.0}(R19)]	*NOT available in DP
52	1.0000	PC			RESISTOR;ARRAY;100Kohm;SMD1206;CAY16-104J4	[2: {1.0}(R56)]	*NOT available in DP
53	2.0000	PC			RESISTOR;METAL;47ohm;1%;0W25;LEAD WIRE	[4: {2.0}(R1-R2)]	*NOT available in DP
54	2.0000	PC			RESISTOR;CARBON;0ohm1;5%;2W;LEAD WIRE	[LX1200H:6: {2.0}(R1-R2)]	*NOT available in DP

**Potentiometer**

	Quantity	Unit	S.Sku	M.Sku	Description	Reference Designators	Notes
1	1.0000	PC		I03-80141-01953	POTENTIOMETER;10Kohm;TAPER:A;QUAD;SHAFT:26mm6;NO DETENTS;NO NUT/WASHER;(TOPROOT RK0976G2H01-F26.6A-A10K-O)	[5: {1.0}(VR1)]	
2	1.0000	PC		I03-88151-04356	POTENTIOMETER;100Kohm;TAPER:A;SHAFT:30mm;STEREO;W/O CC;HIGH TORQUE;40-100gf;(TOPROOT RK112GV01-F30B12-A100KSB-O-H)	[LX1200H:2: {1.0}(VR1)]	

**Encoder**

	Quantity	Unit	S.Sku	M.Sku	Description	Reference Designators	Notes
1	7.0000	PC		I32-62425-02057	ENCODER;12mm;PULSES:24;DETENTS:NONE;25MM;(NOBLE RE0123PBV25FINB1-2-24E)	[3: {7.0}(S3-S9)]	
2	2.0000	PC	Y32-32425-09452	I32-62425-02058	ENCODER;12mm;PULSES:24;DETENTS:24;25MM;NO NUT/WASHER;(NOBLE RE0123PBV25FINB1-2-24PCE)	[3: {2.0}(S1-S2)]	

**Switch**

	Quantity	Unit	S.Sku	M.Sku	Description	Reference Designators	Notes
1	1.0000	PC	Y77-03422-02778	I77-03422-02778	SWITCH;RADIAL;2P2T;PCB VERSION;LOCKING;NONSHORT;RAD2P	[LX1200H:2: {1.0}(SW1)]	
2	1.0000	PC	Y84-02221-36039	I84-02221-36039	SWITCH;ROCKER;2P1T;WHITE LINE MARKING HO;LOCKING;NONSHORT;AMP TABS;V-0;6(6)A;125/250V;(CHILY3072-KGP15T1C01B02BKBKTV		
3	2.0000	PC	Y87-43811-03768	I87-43811-03768	SWITCH;TACTILE;POLES:1;HEIGHT:4mm3;PCB VERSION;NONLOCK;NONSHORT	[90100: {2.0}(SW1-SW2)]	
4	9.0000	PC	Y87-73811-12842	I87-73811-12842	SWITCH;TACTILE;POLES:1;HEIGHT:7mm3;PCB VERSION;+STEM;NONLOCK;NONSHORT	[3: {9.0}(SW1-SW9)]	

**Transistor**

	Quantity	Unit	S.Sku	M.Sku	Description	Reference Designators	Notes
1	13.0000	PC			TRANSISTOR;MBTA06;SOT	[1: {4.0}(T1-T4)]	*NOT available in DP
2	1.0000	PC			TRANSISTOR;MBTA56;SOT	[6: {1.0}(T1)]	*NOT available in DP

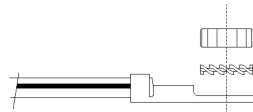
**Cover**

	Quantity	Unit	S.Sku	M.Sku	Description	Reference Designators	Notes
1	0.6700	YD		J11-81370-40465	VINYL COVERING;#62;0.8T;WIDTH:1370mm;COLOR:BLACK;(JIANG-MEN #62/54in)		



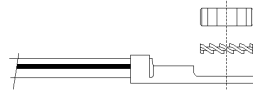
option: only for projects with PE-cable to PCB !

ASSEMBLED CABLE  
(Yellow/Green) to PCB

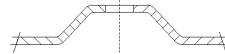


HEX NUT SC-NUHEXM04  
 WASHER TEETH EXTERNAL SC-WATEEXT4x7x1.7   
 ASSEMBLED CABLE WITH LUG 4.3mm WI-00/07/xxxx/07/05/00/18/34/00

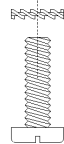
ASSEMBLED CABLE  
(Yellow/Green) to Power Conn.



HEX NUT SC-NUHEXM04  
 WASHER TEETH EXTERNAL SC-WATEEXT4x7x1.7   
 ASSEMBLED CABLE WITH LUG 4.3mm WI-00/07/xxxx/07/05/00/18/34/00



METAL CASE  
 WASHER TEETH EXTERNAL SC-WATEEXT4x7x1.7



SCREW SC-M04x16-02-B-ZP-SLV  
 (standard length, can be variable if required)

Part:		Name		Date	Project:
ASSEMBLE DRAWING		Drawn		PEUSE	08.01.1996
		File		R14-ASSEMBLE-PE-SCREW-REVD.DWG	
Drawing-No.:	X		Part-No.:		
			Color of Part		
			Printing		
			Surface		
D	changed from M3 to M4	03.06.2003	SCHOMMER	Scale	
C	add optional block, delete P-IDs	11.03.2002	MERKEL	Material	
B	adjust Part-IDs	11.04.2001	MERKEL	Units	
A		08.01.1996	PEUSE	Behringer	
Rev.	Modification	Date	Name	Part-ID:	DRA-ASSEMBLE/PE-SCREW



Page 1  
of 1



We Hear You