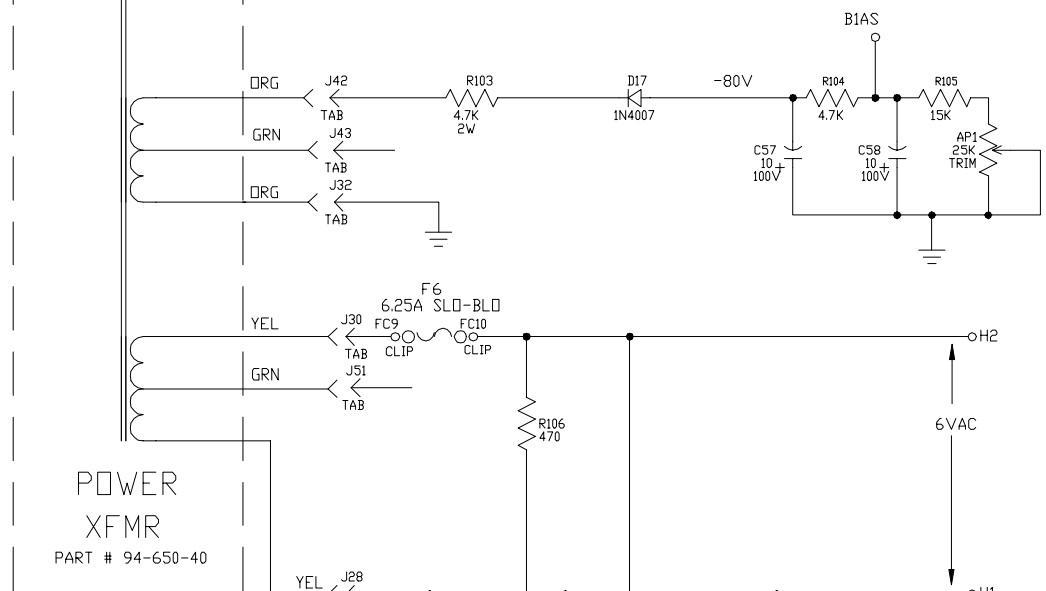
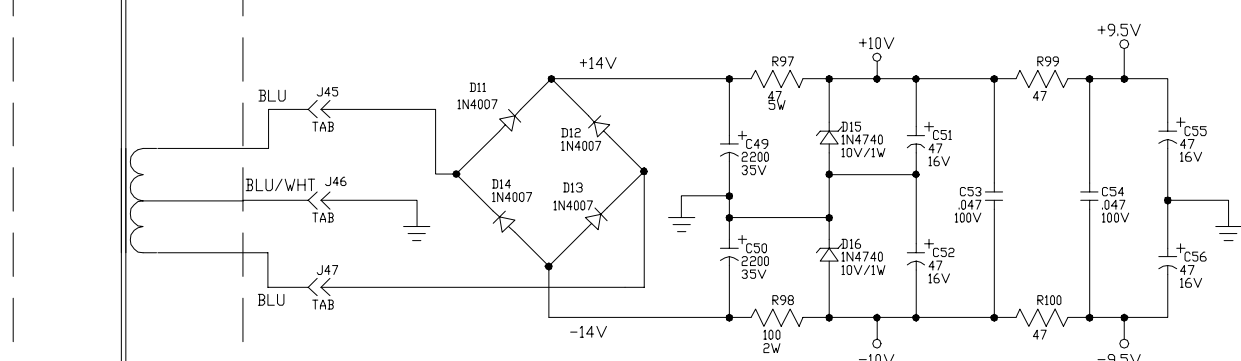


EXPORT WIRING



TEST POINT CHART

T.P. #	D.C. VOLTAGE NO SIGNAL (V)	SIGNAL, CHANNEL 1 ACTIVE (VP-P)	SIGNAL, CHANNEL 2 ACTIVE (VP-P)
1	205	0.3	0.3
2	215	0.02	0.02
3	215	0.03	2.2
4	185	---	0.14
5	200	---	105
6	215	---	130 (CLIPPED)
7	0	6	
8	0	2 W/.03VP-P SIGNAL FROM REV.	
9	0	0.6	
10	0	1.7	
11	265	22	15 (CLIPPED)
12	0	12	7.5 (CLIPPED)
13	---	0.2VDC	10VDC
14	---	10VDC	0.2VDC
15	---	0.2VDC (FX ON)	10VDC (FX OFF)

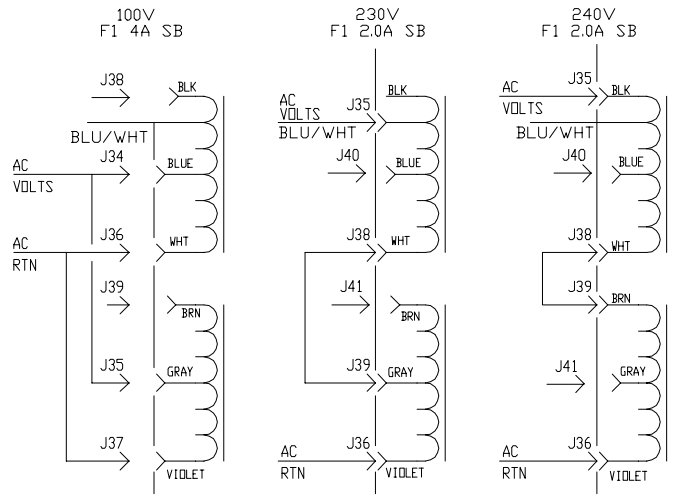
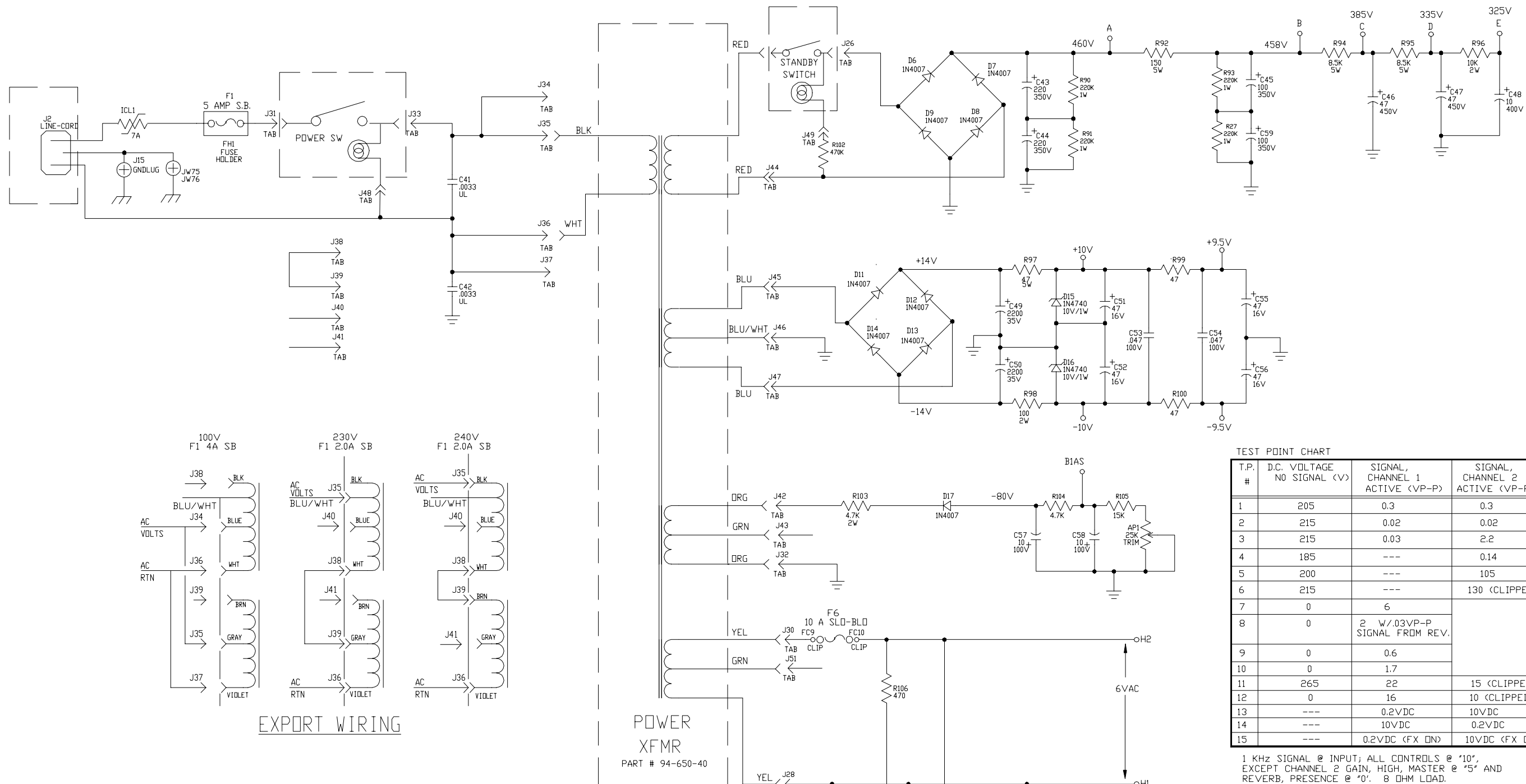
1 KHz SIGNAL @ INPUT; ALL CONTROLS @ "10", EXCEPT CHANNEL 2 GAIN, HIGH, MASTER @ "5" AND REVERB, PRESENCE @ "0". 8 OHM LOAD.

P/N 07-105-02
SUPERCEDES 07S295-51 !

- NOTES
- CAUTION: SHOCK HAZARD!! THIS UNIT CONTAINS HAZARDOUS VOLTAGE. DISCONNECT POWER AND BE SURE POWER SUPPLY IS DISCHARGED BEFORE TOUCHING INTERNAL PARTS.
 - UNLESS NOTED, RESISTOR VALUES IN OHMS, 1/4W-5% TOL. CAPACITOR VALUES IN MICROFARADS, 50V-10% TOL.
 - VOLTAGES ARE MEASURED WITH 1 MEGOHM OSCILLOSCOPE AND 10 MEGOHM DIGITAL VOLTMETER.
 - CHASSIS GROUND \uparrow DIRTY GROUND \downarrow SIGNAL GROUND \pm

- BIAS CALIBRATION PROCEDURE
- CONNECT UNIT TO PROPER AC LINE VOLTAGE.
 - ALLOW UNIT TO WARM UP AT LEAST 5 MINUTES.
 - WITH NO SIGNAL APPLIED ADJUST AP1 FOR 85 WATTS (0.8A DOMESTIC) DRAW FROM THE LINE.
 - ALTERNATE METHOD: WITH ENOUGH SIGNAL (CLEAN) TO JUST CLIP OUTPUT ADJUST AP1 FOR SLIGHT CROSSOVER DISTORTION VISIBLE ON OSCILLOSCOPE TRACE.

1	10/4/00	CHGD PARTS PER ECRN N00085	N00085	WFB	
0		CONTROL ISSUE			
INITIAL ISSUE					
REV:	DATE:	DESCRIPTION	ECR/ECN NO:	CHNG'D BY:	APPR'D BY:
THIS INFORMATION CONTAINED ON THIS DRAWING IS PROPRIETARY TO ST. LOUIS MUSIC, INC.					
SIGNATURES:		DATE:			
DRAWN: REM		2/19/99			
CHK'D:		FIRST USED ON:		BV120HBb	
RLSD:		DRAWING TITLE:		SCHEMATIC - GUITAR AMP	
TOLERANCES:		DRAWING SIZE: D		DRAWING NO.:	
		CLASS CODE:		07S105-XX	
SCALE: NONE		SHEET: 1 of 6			



TEST POINT CHART

T.P. #	D.C. VOLTAGE NO SIGNAL (V)	SIGNAL, CHANNEL 1 ACTIVE (VP-P)	SIGNAL, CHANNEL 2 ACTIVE (VP-P)
1	205	0.3	0.3
2	215	0.02	0.02
3	215	0.03	2.2
4	185	---	0.14
5	200	---	105
6	215	---	130 (CLIPPED)
7	0	6	
8	0	2 W/.03VP-P SIGNAL FROM REV.	
9	0	0.6	
10	0	1.7	
11	265	22	15 (CLIPPED)
12	0	16	10 (CLIPPED)
13	---	0.2VDC	10VDC
14	---	10VDC	0.2VDC
15	---	0.2VDC (FX ON)	10VDC (FX OFF)

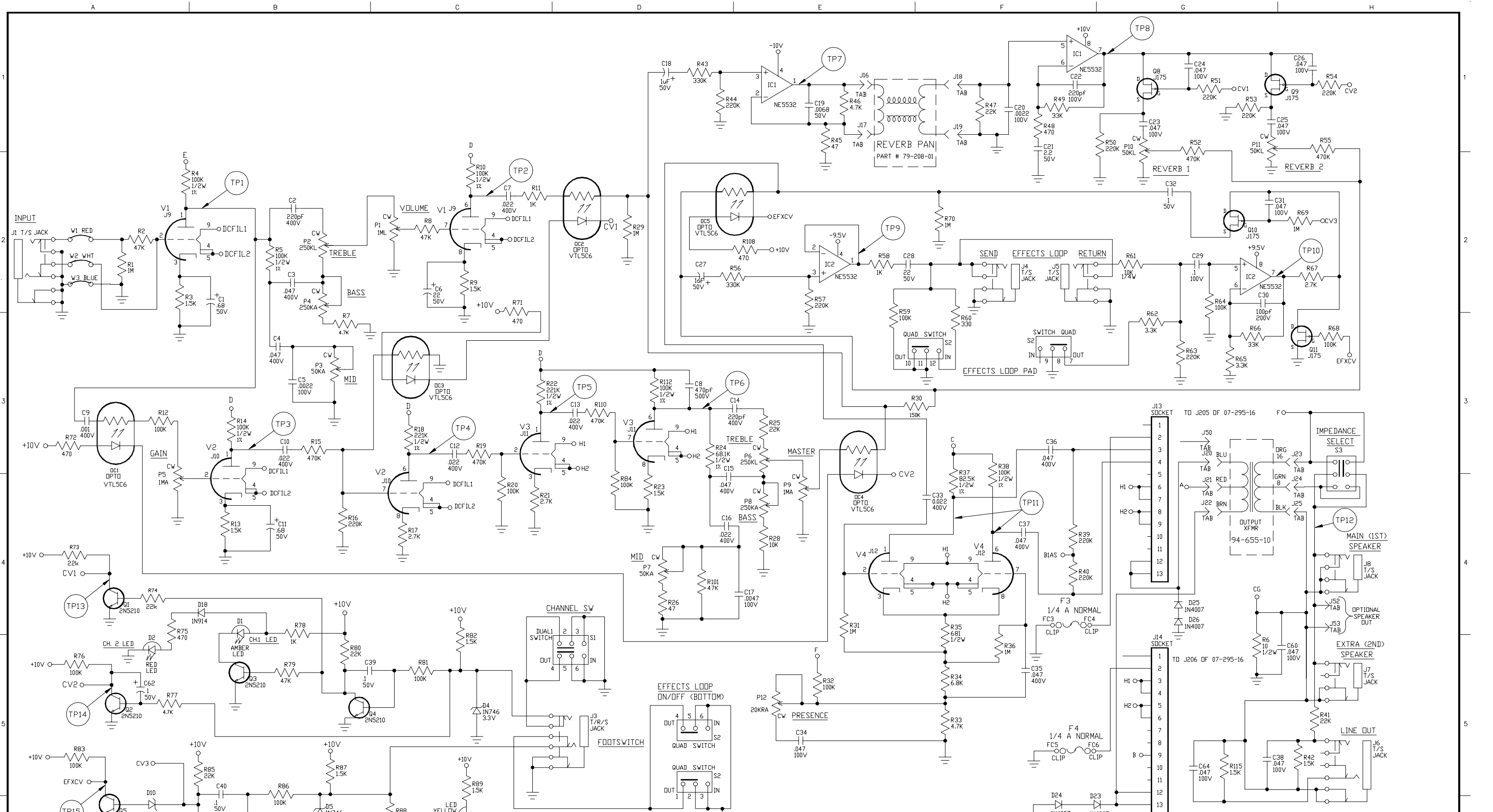
1 KHz SIGNAL @ INPUT; ALL CONTROLS @ '10', EXCEPT CHANNEL 2 GAIN, HIGH, MASTER @ '5' AND REVERB, PRESENCE @ '0'. 8 OHM LOAD.

- NOTES**
- 1) CAUTION: SHOCK HAZARD! THIS UNIT CONTAINS HAZARDOUS VOLTAGE. DISCONNECT POWER AND BE SURE POWER SUPPLY IS DISCHARGED BEFORE TOUCHING INTERNAL PARTS.
 - 2) UNLESS NOTED, RESISTOR VALUES IN OHMS, 1/4W-5% TOL. CAPACITOR VALUES IN MICROFARADS, 50V-10% TOL.
 - 3) VOLTAGES ARE MEASURED WITH 1 MEGOHM OSCILLOSCOPE AND 10 MEGOHM DIGITAL VOLTMETER.
 - 4) CHASSIS GROUND \uparrow DIRTY GROUND ∇ SIGNAL GROUND \oplus

- BIAS CALIBRATION PROCEDURE**
- 1) CONNECT UNIT TO PROPER AC LINE VOLTAGE.
 - 2) ALLOW UNIT TO WARM UP AT LEAST 5 MINUTES.
 - 3) WITH NO SIGNAL APPLIED ADJUST AP1 FOR 120 WATTS (1.3A DOMESTIC) DRAW FROM THE LINE.
 - 4) ALTERNATE METHOD: WITH ENOUGH SIGNAL (CLEAN) TO JUST CLIP OUTPUT ADJUST AP1 FOR SLIGHT CROSSOVER DISTORTION VISIBLE ON OSCILLOSCOPE TRACE.

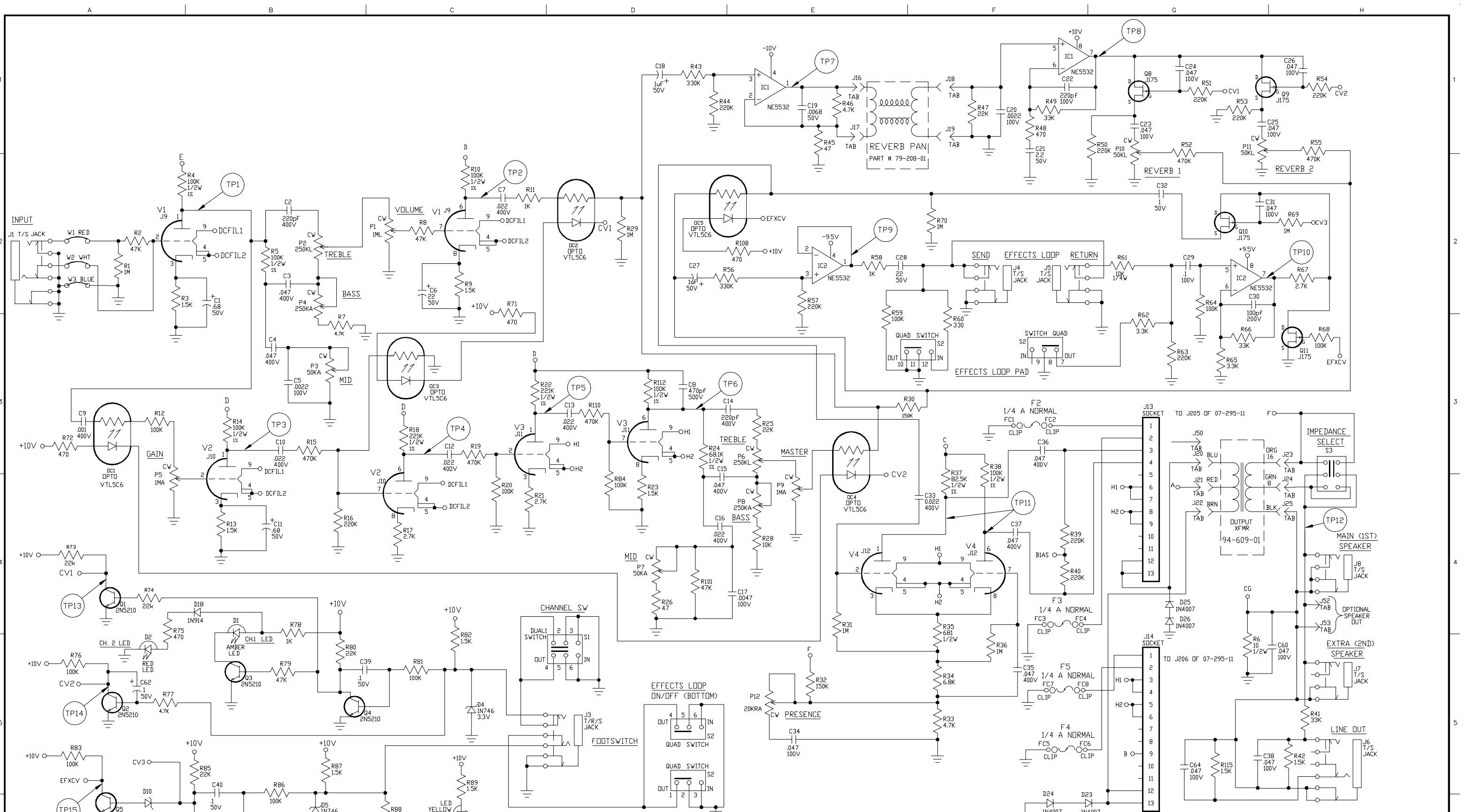
P/N 07-105-01
SUPERCEDES 07S295-01 I

0	SEE SH1 1 FOR REV HISTORY				
REV:	DATE:	DESCRIPTION	ECR/ECN NO:	CHNG'D BY:	APPR'D BY:
THIS INFORMATION CONTAINED ON THIS DRAWING IS PROPRIETARY TO ST. LOUIS MUSIC, INC.					
SIGNATURES:		DATE:	11880 Borman Dr. St. Louis, Missouri 63146		
DRAWN:	REM	2/19/99	FIRST USED ON:		
CHK'D:			BV120HBb		
RLS'D:			DRAWING TITLE:		
DRAWING SIZE: D		DRAWING TYPE: SCHEMATIC		SCHEMATIC - GUITAR AMP	
CLASS CODE:		SCALE: NONE		DRAWING NO.:	
SHEET: 2 of 6		07S105-XX			



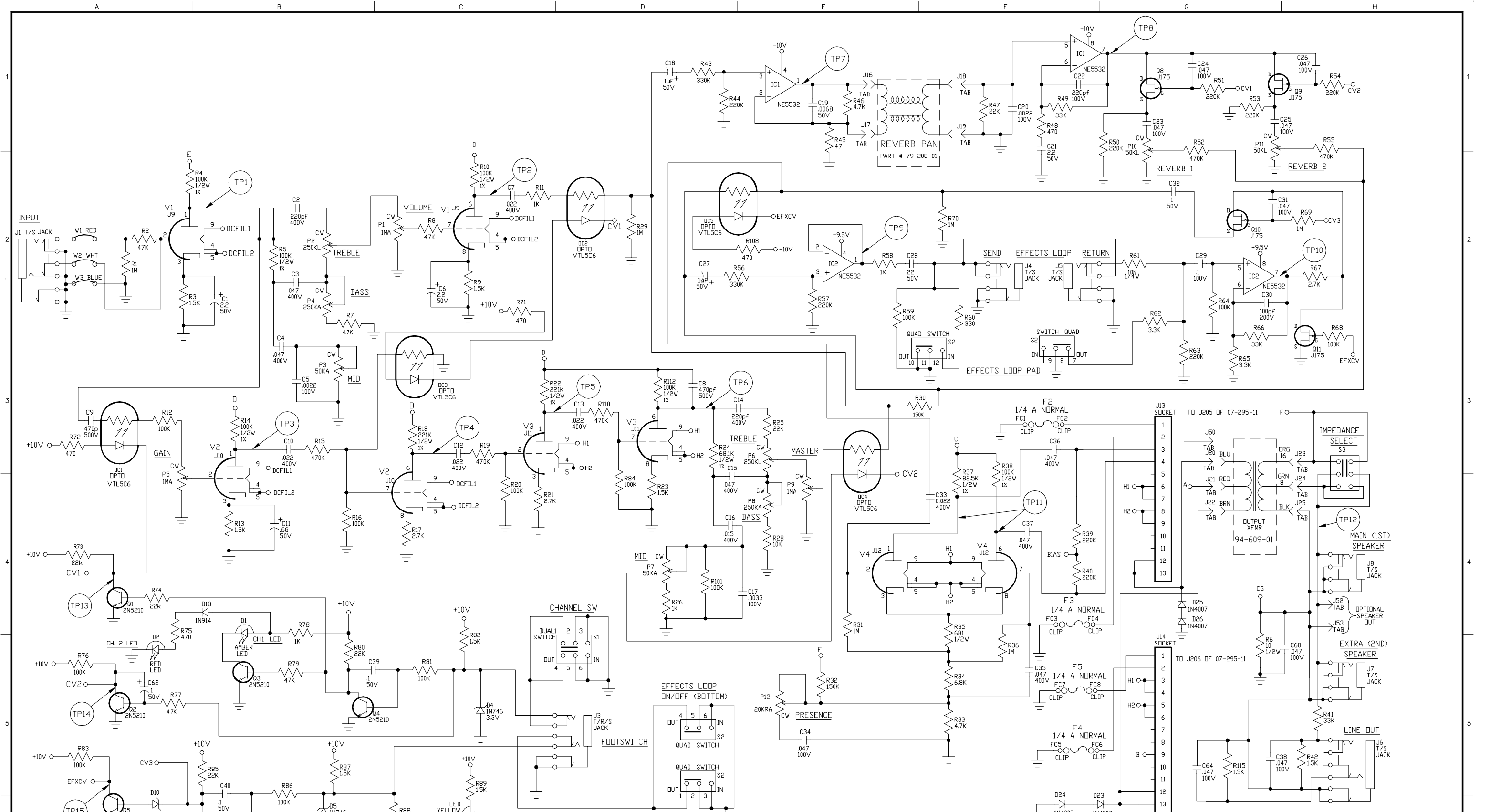
P/N 07-105-02
SUPERCEDES 07S295-51 !

REV:	DATE:	DESCRIPTION:	ECR/ECN NO.:	CHNG'D BY:	APPR'D BY:	DATE:
SEE SH1 FOR REV HISTORY						
THIS INFORMATION CONTAINED ON THIS DRAWING IS PROPRIETARY TO ST. LOUIS MUSIC, INC.						
SIGNATURES:		DATE:		11880 Borman Dr. St. Louis, Missouri 63146		
DRAWN: REM		2/19/99		BVM Electronics		
CHK'D:				FIRST USED ON: BV120HBb		
RLS'D:				DRAWING TITLE: SCHEMATIC - GUITAR AMP		
DRAWING NO.:		07S105-XX		DRAWING NO.:		
TOLERANCES:		DRAWING SIZE: D		SCALE: NONE		
CLASS CODE:		DRAWING TYPE: SCHEMATIC		SHEET: 3 OF 6		



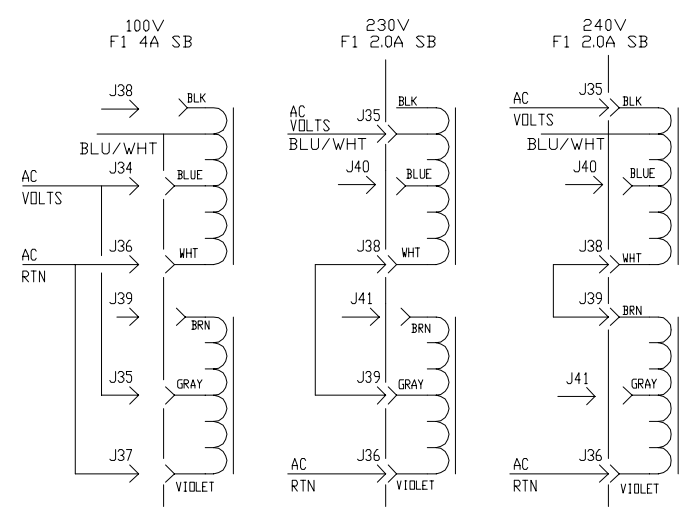
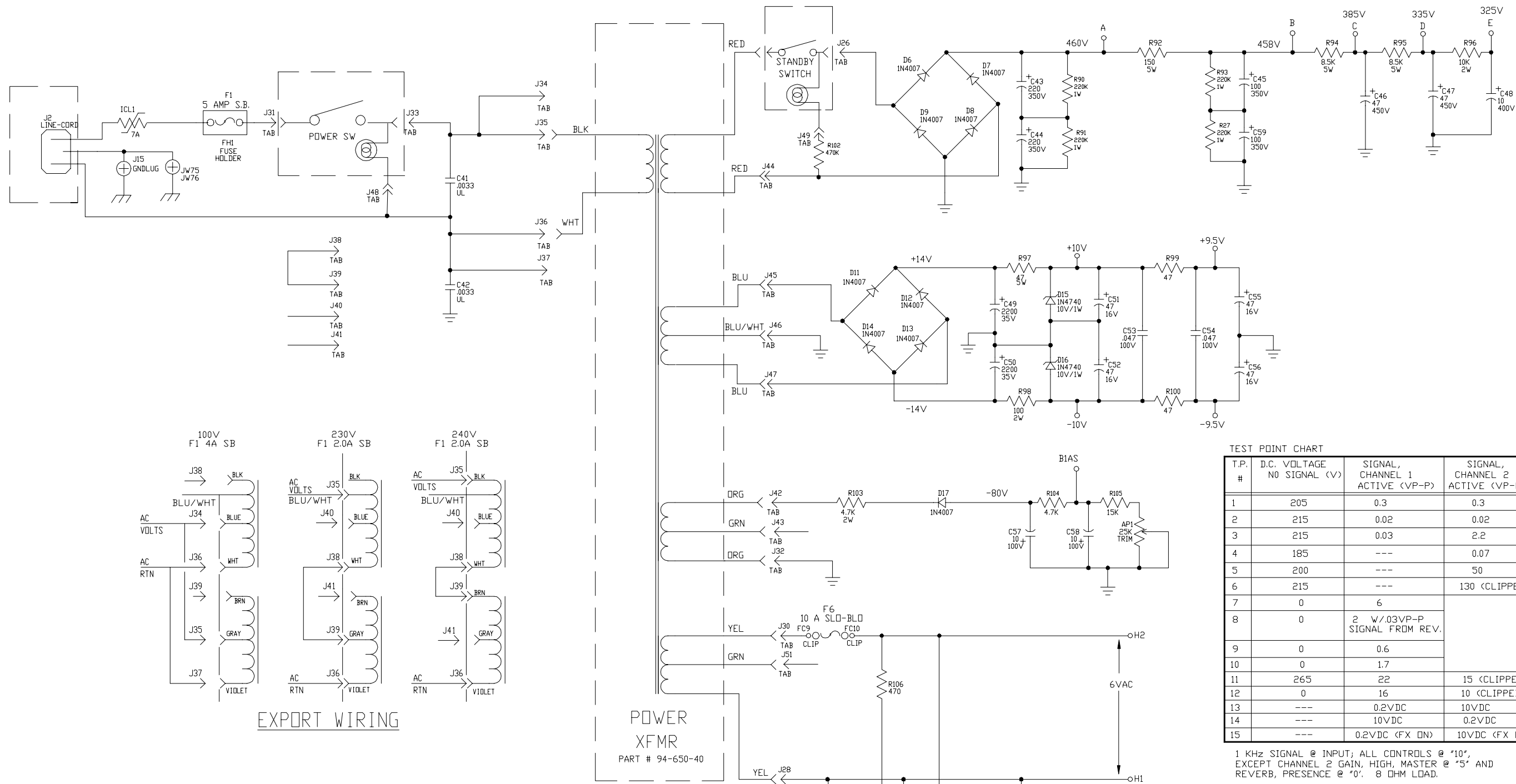
P/N 07-105-01
SUPERCEDES 07S295-01 I

REV:	DATE:	DESCRIPTION	ECR/ECN NO:	CHNG'D BY:	APP'D BY:	DATE:
SEE SHT 1 FOR REV HISTORY						
THIS INFORMATION CONTAINED ON THIS DRAWING IS PROPRIETARY TO ST. LOUIS MUSIC, INC.						
SIGNATURES:		DATE:		11880 Borman Dr. St. Louis, Missouri 63146		
DRAWN: REM		2/19/99		FIRST USED ON: BV120HBb		
CHK'D:				DRAWING TITLE: SCHEMATIC - GUITAR AMP		
RLS'D:				DRAWING NO.:		
TOLERANCES:		DRAWING SIZE: D		DRAWING NO.:		
		DRAWING TYPE: SCHEMATIC		DRAWING NO.:		
		CLASS CODE:		DRAWING NO.:		
		SCALE: NONE		DRAWING NO.:		
		SHEET: 4 OF 6		DRAWING NO.:		
				DRAWING NO.:		



P/N 07-105-03
SUPERCEDES 07S295-02 !

REV:	DATE:	DESCRIPTION	ECR/ECN NO:	CHNG'D BY:	APPR'D BY:	DATE:
SEE SHT 1 FOR REV HISTORY						
THIS INFORMATION CONTAINED ON THIS DRAWING IS PROPRIETARY TO ST. LOUIS MUSIC, INC.						
SIGNATURES:		DATE:		11880 Borman Dr. St. Louis, Missouri 63146		
DRAWN: REM		2/19/99		FIRST USED ON: BV120HBb		
CHK'D:				DRAWING TITLE: SCHEMATIC - GUITAR AMP		
RLS'D:				DRAWING NO.:		
TOLERANCES:		DRAWING SIZE: D		SCALE: NONE		
		DRAWING TYPE: SCHEMATIC		SHEET: 5 OF 6		
		CLASS CODE:		07S105-XX		



EXPORT WIRING

POWER XFMR
PART # 94-650-40

TEST POINT CHART

T.P. #	D.C. VOLTAGE NO SIGNAL (V)	SIGNAL, CHANNEL 1 ACTIVE (VP-P)	SIGNAL, CHANNEL 2 ACTIVE (VP-P)
1	205	0.3	0.3
2	215	0.02	0.02
3	215	0.03	2.2
4	185	---	0.07
5	200	---	50
6	215	---	130 (CLIPPED)
7	0	6	
8	0	2 W/0.3VP-P SIGNAL FROM REV.	
9	0	0.6	
10	0	1.7	
11	265	22	15 (CLIPPED)
12	0	16	10 (CLIPPED)
13	---	0.2VDC	10VDC
14	---	10VDC	0.2VDC
15	---	0.2VDC (FX ON)	10VDC (FX OFF)

1 KHz SIGNAL @ INPUT; ALL CONTROLS @ '10', EXCEPT CHANNEL 2 GAIN, HIGH, MASTER @ '5' AND REVERB, PRESENCE @ '0'. 8 OHM LOAD.

P/N 07-105-03
SUPERCEDES 07S295-02 I

- NOTES
- 1) CAUTION: SHOCK HAZARD!! THIS UNIT CONTAINS HAZARDOUS VOLTAGE. DISCONNECT POWER AND BE SURE POWER SUPPLY IS DISCHARGED BEFORE TOUCHING INTERNAL PARTS.
 - 2) UNLESS NOTED, RESISTOR VALUES IN OHMS, 1/4W-5% TOL. CAPACITOR VALUES IN MICROFARADS, 50V-10% TOL.
 - 3) VOLTAGES ARE MEASURED WITH 1 MEGOHM OSCILLOSCOPE AND 10 MEGOHM DIGITAL VOLTMETER.
 - 4) CHASSIS GROUND ⚡ DIRTY GROUND ⚡ SIGNAL GROUND ⚡

- BIAS CALIBRATION PROCEDURE
- 1) CONNECT UNIT TO PROPER AC LINE VOLTAGE.
 - 2) ALLOW UNIT TO WARM UP AT LEAST 5 MINUTES.
 - 3) WITH NO SIGNAL APPLIED ADJUST AP1 FOR 120 WATTS (1.3A DOMESTIC) DRAW FROM THE LINE.
 - 4) ALTERNATE METHOD: WITH ENOUGH SIGNAL (CLEAN) TO JUST CLIP OUTPUT ADJUST AP1 FOR SLIGHT CROSSOVER DISTORTION VISIBLE ON OSCILLOSCOPE TRACE.

0	SEE SHT 1 FOR REV HISTORY				
REV:	DATE:	DESCRIPTION	ECR/ECN NO:	CHNG'D BY:	APPR'D BY:
THIS INFORMATION CONTAINED ON THIS DRAWING IS PROPRIETARY TO ST. LOUIS MUSIC, INC.					
SIGNATURES:		DATE:		11880 Borman Dr. St. Louis, Missouri 63146	
DRAWN: REM		2/19/99		FIRST USED ON: BV120HBb	
CHK'D:				DRAWING TITLE: SCHEMATIC - GUITAR AMP	
RLS'D:				DRAWING NO.: 07S105-XX	
TOLERANCES:		DRAWING SIZE: D		SCALE: NONE	
		SHEET: 6 of 6			