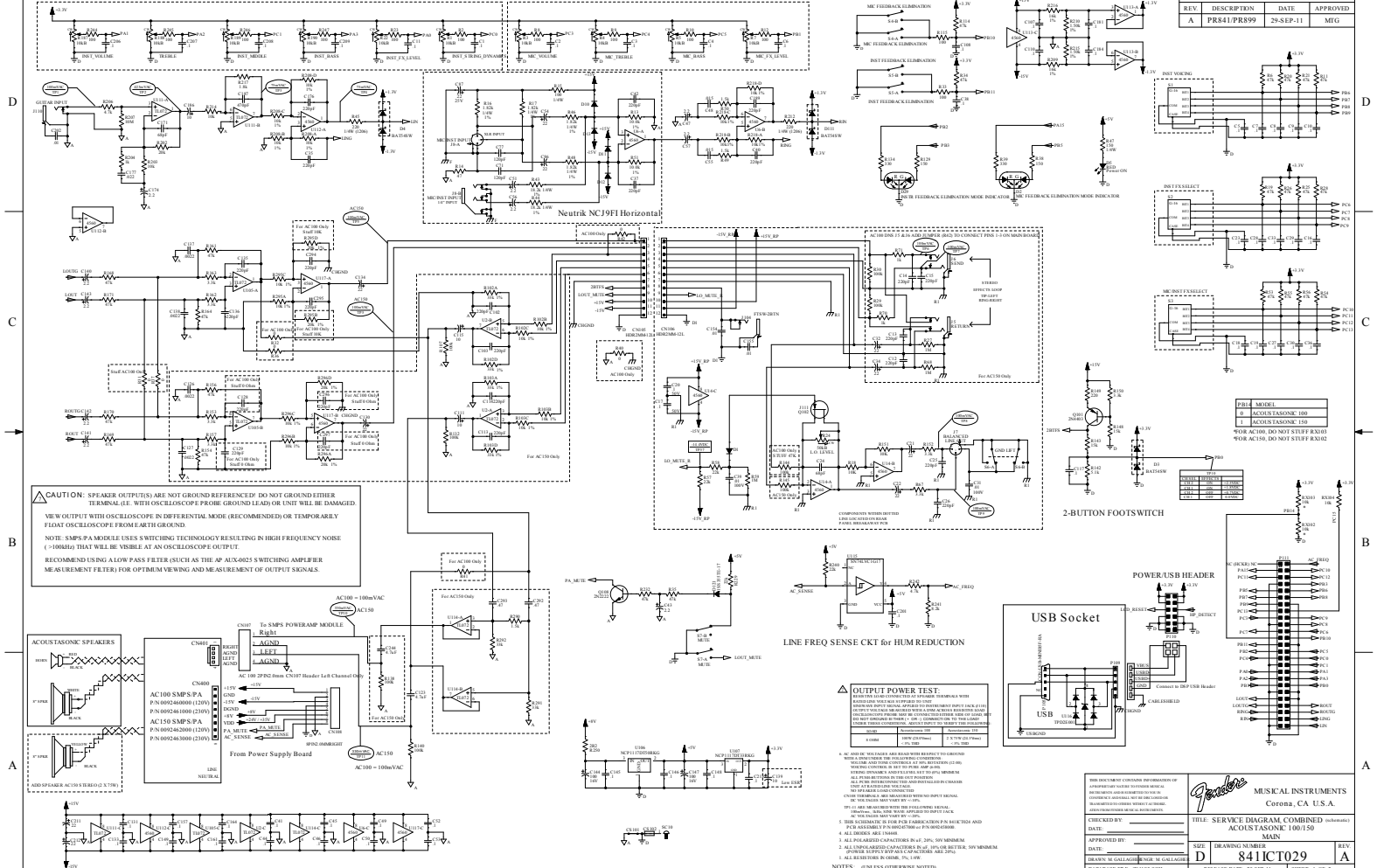
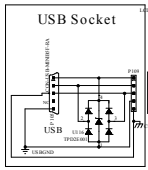


REVISIONS			
REV	DESCRIPTION	DATE	APPROVED
A	PR841/PR899	29-SEP-11	MIJ



**CAUTION:** SPEAKER OUTPUT(S) ARE NOT GROUND REFERENCED DO NOT GROUND EITHER TERMINAL (I.E. WITH OSCILLOSCOPE PROBE GROUND LEAD) OR UNIT WILL BE DAMAGED. VIEW OUTPUT WITH OSCILLOSCOPE IN DIFFERENTIAL MODE (RECOMMENDED) OR TEMPORARILY FLOAT OSCILLOSCOPE FROM EARTH GROUND.

**NOTE:** SMP5 PA MODULE USES SWITCHING TECHNOLOGY RESULTING IN HIGH FREQUENCY NOISE (>100kHz) THAT WILL BE VISIBLE AT AN OSCILLOSCOPE OUTPUT. RECOMMEND USING A LOW PASS FILTER (SUCH AS THE AP AC100/5 SWITCHING AMPLIFIER MEASUREMENT FILTER) FOR OPTIMUM VIEWING AND MEASUREMENT OF OUTPUT SIGNALS.



FILE MODEL
0 ACUSTASGNC-100
1 ACUSTASGNC-150
*FOR AC100, DO NOT STUFF R3041
*FOR AC150, DO NOT STUFF R3042

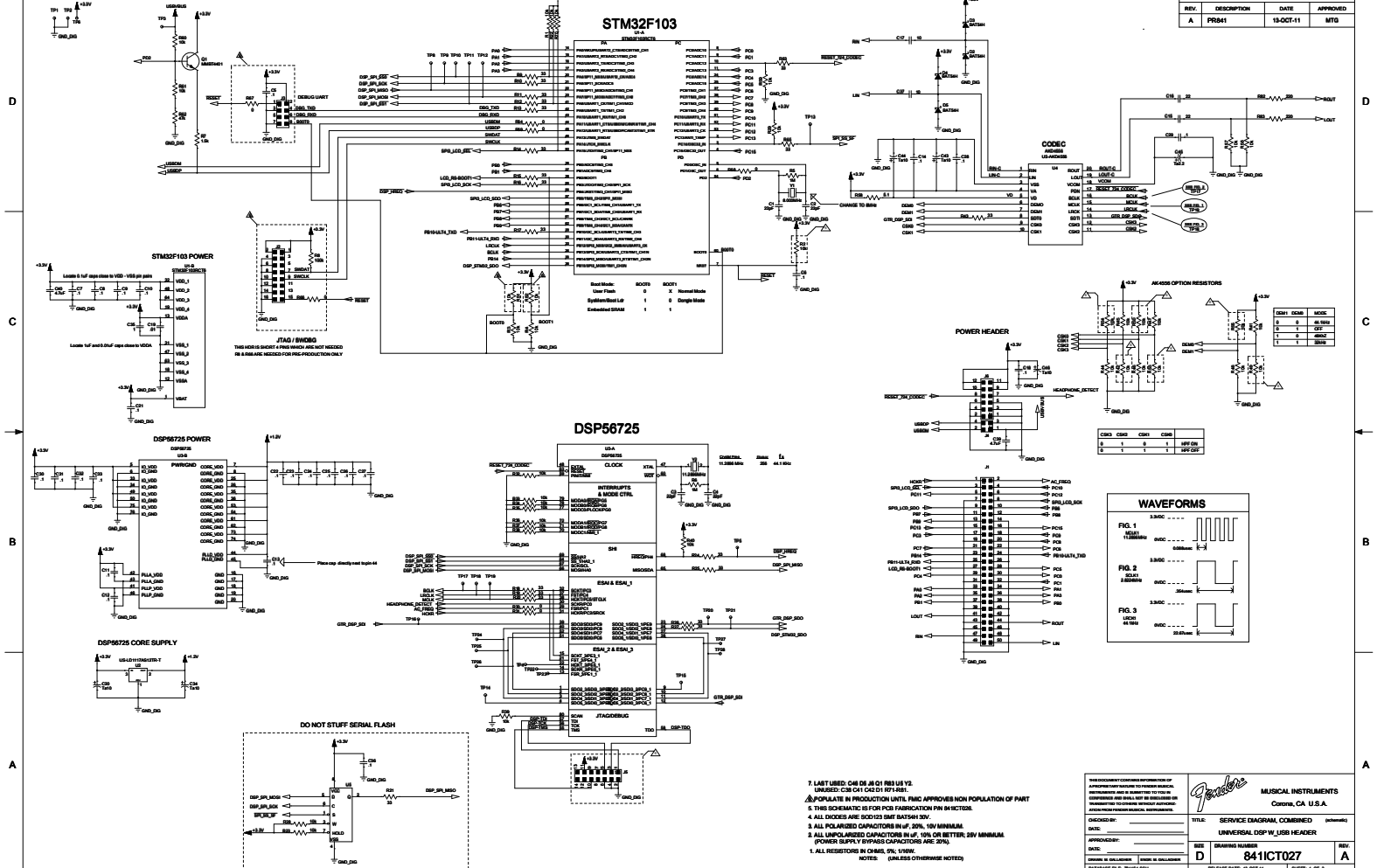
WIRE NO.	WIRE COLOR	WIRE SIZE	WIRE TYPE	WIRE LENGTH
1	RED	24	AWG	1.00
2	BLACK	24	AWG	1.00
3	GREEN	24	AWG	1.00
4	YELLOW	24	AWG	1.00
5	BLUE	24	AWG	1.00
6	BROWN	24	AWG	1.00
7	PINK	24	AWG	1.00
8	GRAY	24	AWG	1.00
9	WHITE	24	AWG	1.00
10	ORANGE	24	AWG	1.00
11	PURPLE	24	AWG	1.00
12	TEAL	24	AWG	1.00
13	SLATE	24	AWG	1.00
14	MAUVE	24	AWG	1.00
15	INDIGO	24	AWG	1.00
16	VIOLET	24	AWG	1.00
17	PURPLE	24	AWG	1.00
18	TEAL	24	AWG	1.00
19	SLATE	24	AWG	1.00
20	MAUVE	24	AWG	1.00
21	INDIGO	24	AWG	1.00
22	VIOLET	24	AWG	1.00
23	PURPLE	24	AWG	1.00
24	TEAL	24	AWG	1.00
25	SLATE	24	AWG	1.00
26	MAUVE	24	AWG	1.00
27	INDIGO	24	AWG	1.00
28	VIOLET	24	AWG	1.00
29	PURPLE	24	AWG	1.00
30	TEAL	24	AWG	1.00
31	SLATE	24	AWG	1.00
32	MAUVE	24	AWG	1.00
33	INDIGO	24	AWG	1.00
34	VIOLET	24	AWG	1.00
35	PURPLE	24	AWG	1.00
36	TEAL	24	AWG	1.00
37	SLATE	24	AWG	1.00
38	MAUVE	24	AWG	1.00
39	INDIGO	24	AWG	1.00
40	VIOLET	24	AWG	1.00
41	PURPLE	24	AWG	1.00
42	TEAL	24	AWG	1.00
43	SLATE	24	AWG	1.00
44	MAUVE	24	AWG	1.00
45	INDIGO	24	AWG	1.00
46	VIOLET	24	AWG	1.00
47	PURPLE	24	AWG	1.00
48	TEAL	24	AWG	1.00
49	SLATE	24	AWG	1.00
50	MAUVE	24	AWG	1.00
51	INDIGO	24	AWG	1.00
52	VIOLET	24	AWG	1.00
53	PURPLE	24	AWG	1.00
54	TEAL	24	AWG	1.00
55	SLATE	24	AWG	1.00
56	MAUVE	24	AWG	1.00
57	INDIGO	24	AWG	1.00
58	VIOLET	24	AWG	1.00
59	PURPLE	24	AWG	1.00
60	TEAL	24	AWG	1.00
61	SLATE	24	AWG	1.00
62	MAUVE	24	AWG	1.00
63	INDIGO	24	AWG	1.00
64	VIOLET	24	AWG	1.00
65	PURPLE	24	AWG	1.00
66	TEAL	24	AWG	1.00
67	SLATE	24	AWG	1.00
68	MAUVE	24	AWG	1.00
69	INDIGO	24	AWG	1.00
70	VIOLET	24	AWG	1.00
71	PURPLE	24	AWG	1.00
72	TEAL	24	AWG	1.00
73	SLATE	24	AWG	1.00
74	MAUVE	24	AWG	1.00
75	INDIGO	24	AWG	1.00
76	VIOLET	24	AWG	1.00
77	PURPLE	24	AWG	1.00
78	TEAL	24	AWG	1.00
79	SLATE	24	AWG	1.00
80	MAUVE	24	AWG	1.00
81	INDIGO	24	AWG	1.00
82	VIOLET	24	AWG	1.00
83	PURPLE	24	AWG	1.00
84	TEAL	24	AWG	1.00
85	SLATE	24	AWG	1.00
86	MAUVE	24	AWG	1.00
87	INDIGO	24	AWG	1.00
88	VIOLET	24	AWG	1.00
89	PURPLE	24	AWG	1.00
90	TEAL	24	AWG	1.00
91	SLATE	24	AWG	1.00
92	MAUVE	24	AWG	1.00
93	INDIGO	24	AWG	1.00
94	VIOLET	24	AWG	1.00
95	PURPLE	24	AWG	1.00
96	TEAL	24	AWG	1.00
97	SLATE	24	AWG	1.00
98	MAUVE	24	AWG	1.00
99	INDIGO	24	AWG	1.00
100	VIOLET	24	AWG	1.00

**OUTPUT POWER TEST:**  
 1. SET THE OUTPUT POWER TO THE DESIRED LEVEL.  
 2. MEASURE THE OUTPUT POWER AT THE LOAD.  
 3. CALCULATE THE OUTPUT POWER.  
 4. REPEAT THE TEST FOR ALL DESIRED LEVELS.  
 5. RECORD THE RESULTS.

JENSEN MUSICAL INSTRUMENTS		CORONA, CA U.S.A.	
CHECKED BY:	DATE:	DATE:	DATE:
APPROVED BY:	DATE:	DATE:	DATE:
DRAWN BY:	DATE:	DATE:	DATE:
DATE:	DATE:	DATE:	DATE:
DATE:	DATE:	DATE:	DATE:



REVISIONS			
REV	DESCRIPTION	DATE	APPROVED
A	PRB41	13-OCT-11	MTG



1. LISTED: CH D1 01 88 US V2  
UNLISTED: CH D1 02 D1 87 PRB1.
2. POPULATE IN PRODUCTION UNITS. THIS APPROXES HIGH POPULATION OF PART.
3. THIS SCHEMATIC IS FOR PCB FABRICATION PER 841CT027.
4. ALL DIODES ARE 60V/250 MA/50V BAT54H 3V.
5. ALL POLARIZED CAPACITORS IN µF, 50% OR BETTER, 25V MINIMUM (POWER SUPPLY BYPASS CAPACITORS ARE 20%).
6. ALL RESISTORS IN OHMS, 0% TOLERANCE.

<p>7. ALL RESISTORS IN OHMS, 0% TOLERANCE.</p> <p>NOTES: (UNLESS OTHERWISE NOTED)</p>	<p>841CT027</p> <p>UNIVERSAL DSP W_USB HEADER</p> <p>REV. A</p>
---------------------------------------------------------------------------------------	-----------------------------------------------------------------

A

B

C

D

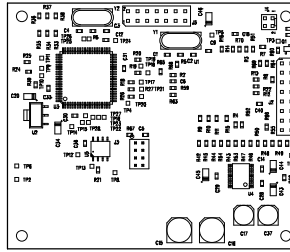
A

B

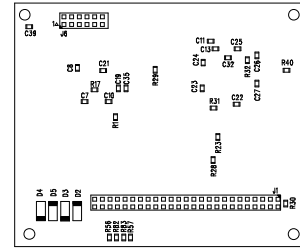
C

D

R E V I S I O N S			
REV.	DESCRIPTION	DATE	APPROVED
A	PR841	12-OCT-11	MTG



VIEWED FROM COMPONENT (TOP) SIDE  
(NTS)



VIEWED FROM SOLDER (BOTTOM) SIDE  
(NTS)

FILM/DWG:	SERVICE DIAGRAM
DATABASE:	Z841P1.PCB DATE: 12-OCT-11

THIS DOCUMENT CONTAINS INFORMATION OF A PROPRIETARY NATURE TO FENDER MUSICAL INSTRUMENTS AND IS SUBMITTED TO YOU IN CONFIDENCE AND SHALL NOT BE DISCLOSED OR TRANSMITTED TO OTHERS WITHOUT AUTHORIZATION FROM FENDER MUSICAL INSTRUMENTS.



MUSICAL INSTRUMENTS  
Corona, CA U.S.A.

CHECKED BY: \_\_\_\_\_  
DATE: \_\_\_\_\_

TITLE: SERVICE DIAGRAM, COMBINED (PCB assy)  
UNIVERSAL DSP W\_USB HEADER

APPROVED BY: \_\_\_\_\_  
DATE: \_\_\_\_\_

SIZE	DRAWING NUMBER	REV.
B	841ICT027	A

DRAWN: CORBIN ENGR: M. GALLAGHER  
DATABASE FILE: Z841P1.PCB

RELEASE DATE: 12-OCT-11 SHEET 2 OF 2

SEE SHEET ONE FOR VALUES AND CONDITIONS.  
NOTES: (UNLESS OTHERWISE NOTED)

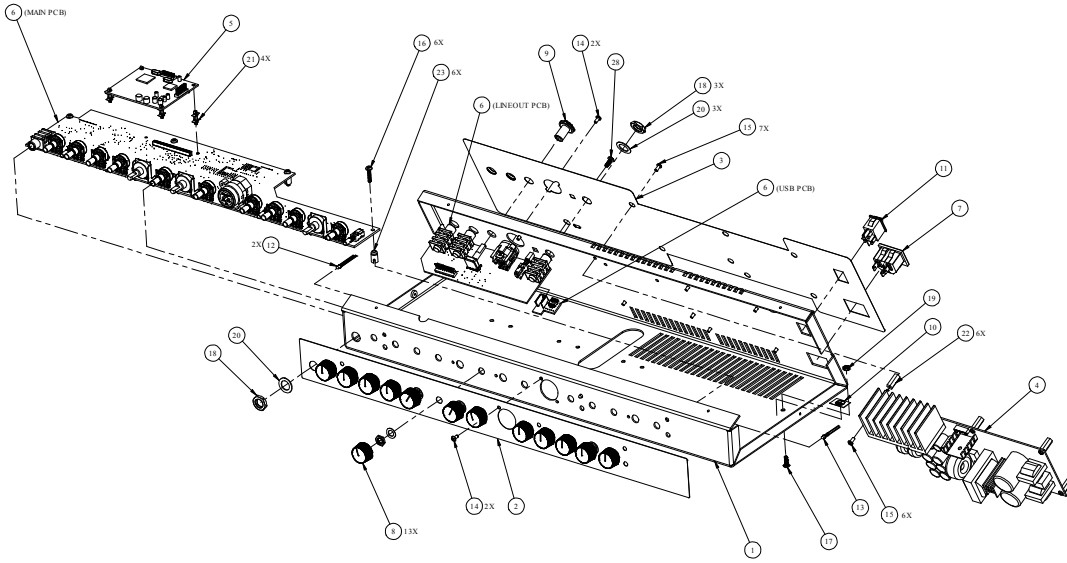


TABLE 1		
ITEM NO.	FROM	TO
24	ITEM 4 (MAIN PCB) CN108	ITEM 6 (USB PCB) P109
25	ITEM 6 (MAIN PCB) CN108	ITEM 6 (LINEOUT PCB) CN106
26	ITEM 6 (MAIN PCB) CN108	ITEM 4 (SMP5_PA PCB) CN400
27	ITEM 6 (MAIN PCB) CN107	ITEM 4 (SMP5_PA PCB) SOLDER

(N.S.) = NOT SHOWN

28	1	SCRW M6-32X8 PHP BLX
27	1	CABLE RIBBON 4 CKT (N.S.)
26	1	CABLE RIBBON 4 CKT (N.S.)
25	1	CABLE RIBBON 12 CKT (N.S.)
24	1	CABLE ASSEMBLY USB (N.S.)
23	6	STANDOFF NYL PCB SNAP 3/8
22	6	STANDOFF F/F 4.40 x 1.6mm L
21	4	STDF NYLON 7MM W/3MM DIA
20	4	WASHER FLAT 442 X.692 NI
19	1	NUT 6-32 HEX EXT LOCK
18	4	NUT HEX T/6 S02/4 NI
17	1	SCRW M6-32X8 PHP NI
16	6	SCRW TF 6-32 X 5/8 PHP
15	13	SCRW M4-40x14 PHP BLX
14	4	SCRW 4-40x14 TF HXW S/LT SS
13	1	LED RED T-1 3mm DE FUSED
12	2	LED RED/GREEN T-1 3-1MM
11	1	SWITCH DPST 187 TAB GLOBAL
10	1	LABEL GROUNDING SENSOR
9	1	KNOB CONTROL THUMB BLACK
8	13	KNOB VINTAGE DARK BROWN D
7	1	CONNECTOR REC SNAP IN
6	1	PCB ASSY MAIN AC/USTASONIC 150
5	1	PCB ASSY UNIV DSP W USB HEADR
4	1	PWR AMP SMP5 MODULE 2 X 75W
3	1	PANEL REAR AC/USTASONIC 150
2	1	PANEL FRONT ACST 150
1	1	CHASSIS AC/USTASONIC 150

MATERIAL	N/A	GENERAL TOLERANCES UNLESS OTHERWISE SPECIFIED	ENGINEER	DATE	09/29/2008
			DRAWN	DATE	09/29/2008
FINISH	N/A		CHKD	DATE	
			S.M.E. (OPT)	DATE	
			MGR./DR	DATE	
			P.L.	DATE	

DO NOT SCALE DRAWING

CHASSIS ASSEMBLY AC/USTASONIC 150

SIZE: PART NUMBER: **D 8411CT002** MASTER/ASSEMBLY **A**

FILE NAME: SCALE: NONE 1 SHEET 1 of 1