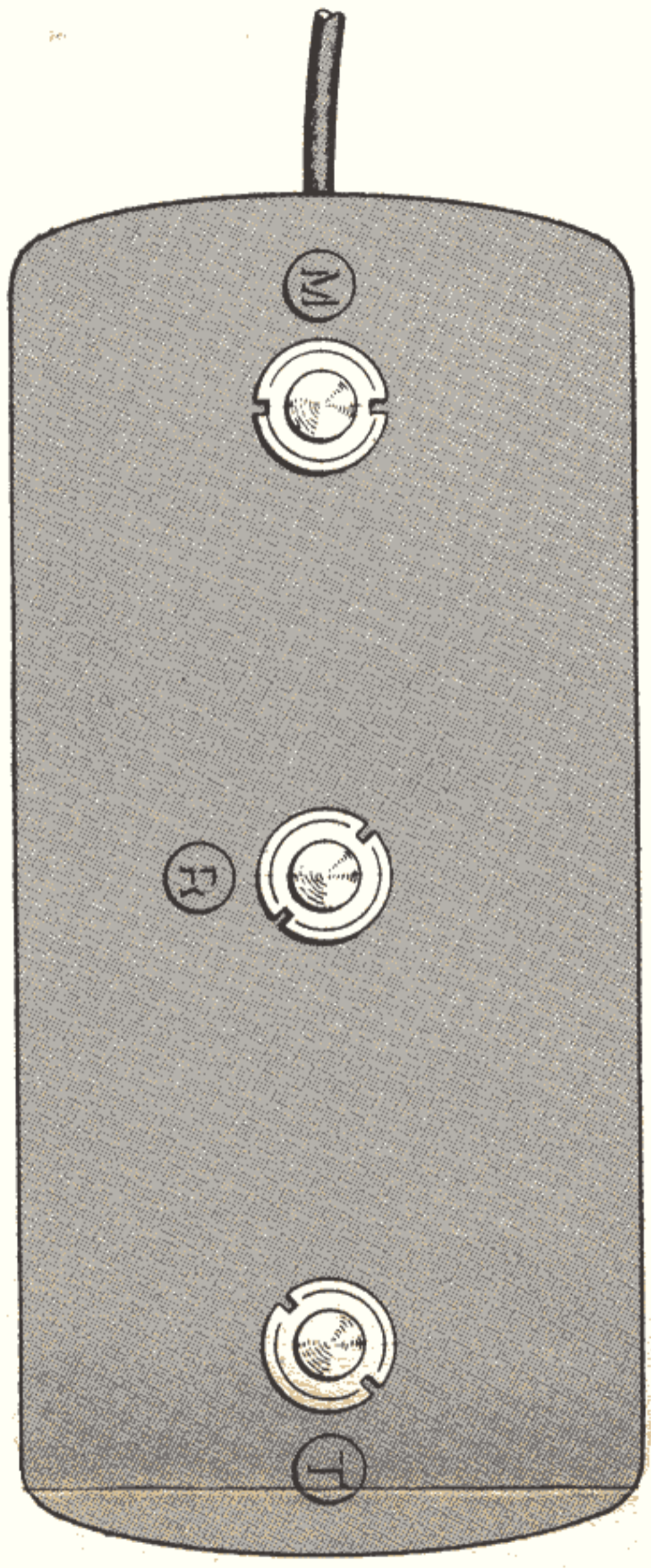


AMPLIFIER CHASSIS

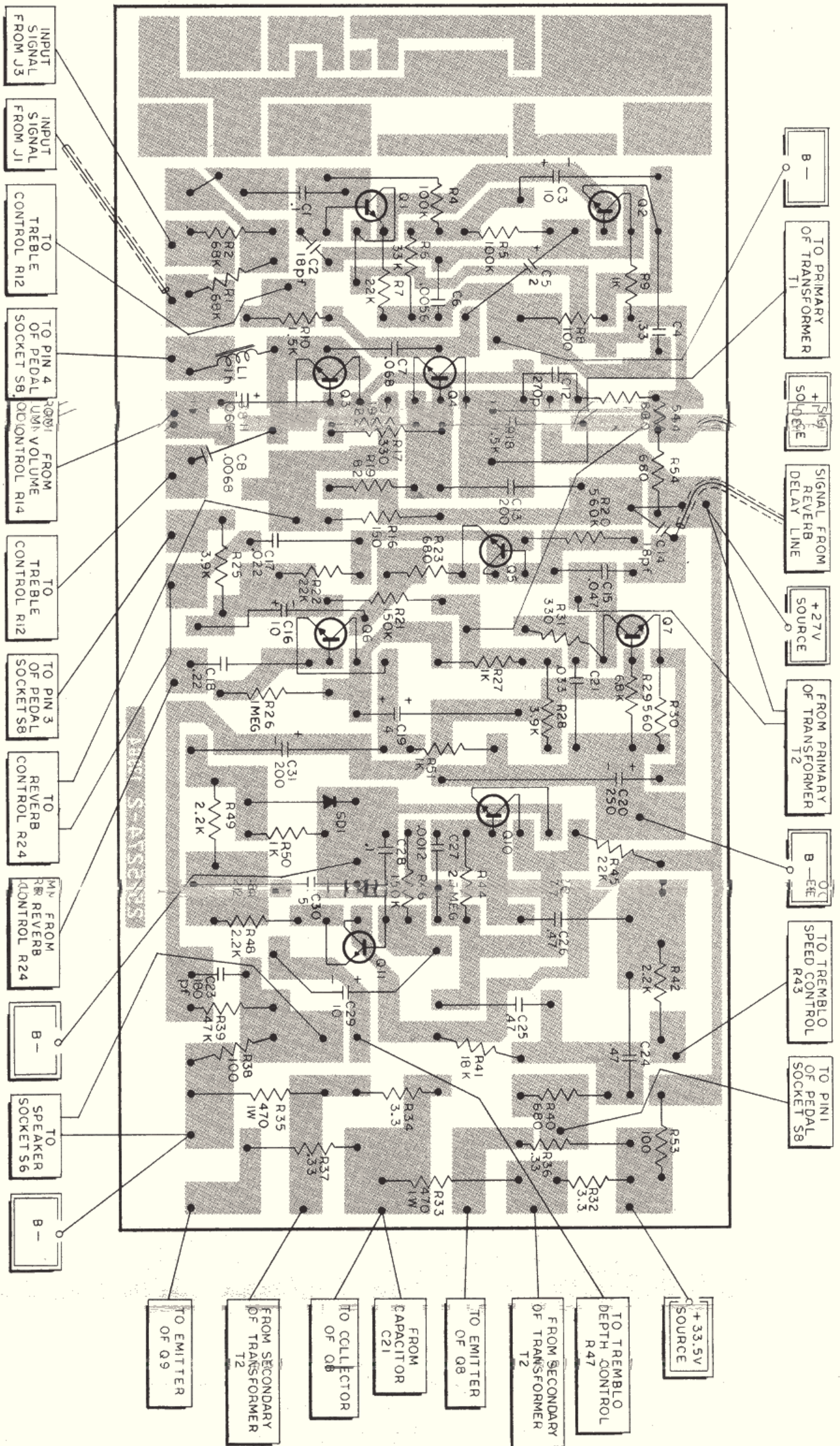
SW3

SW2

SW1



PEDAL ASSEMBLY



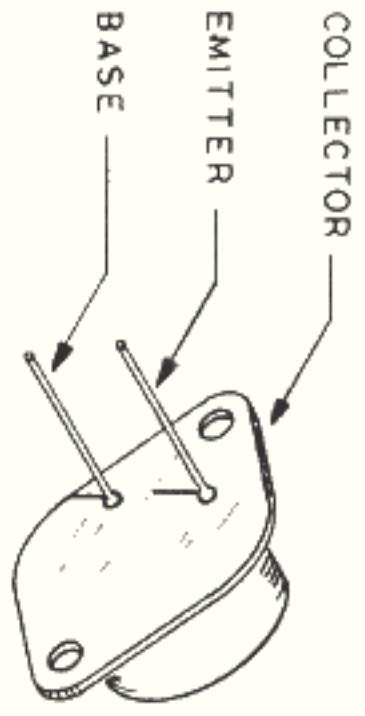
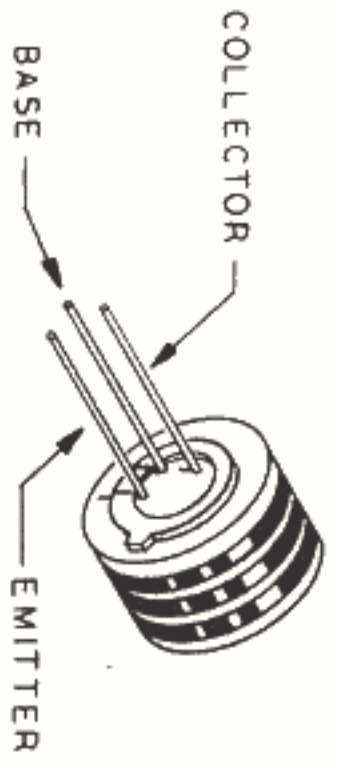
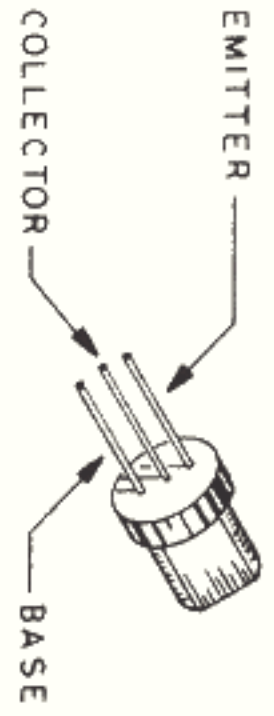
PP P. C. BOARD & COMPONENTS

84-18382-1

(SHOWN COMPONENT SIDE UP)

38-5373-0

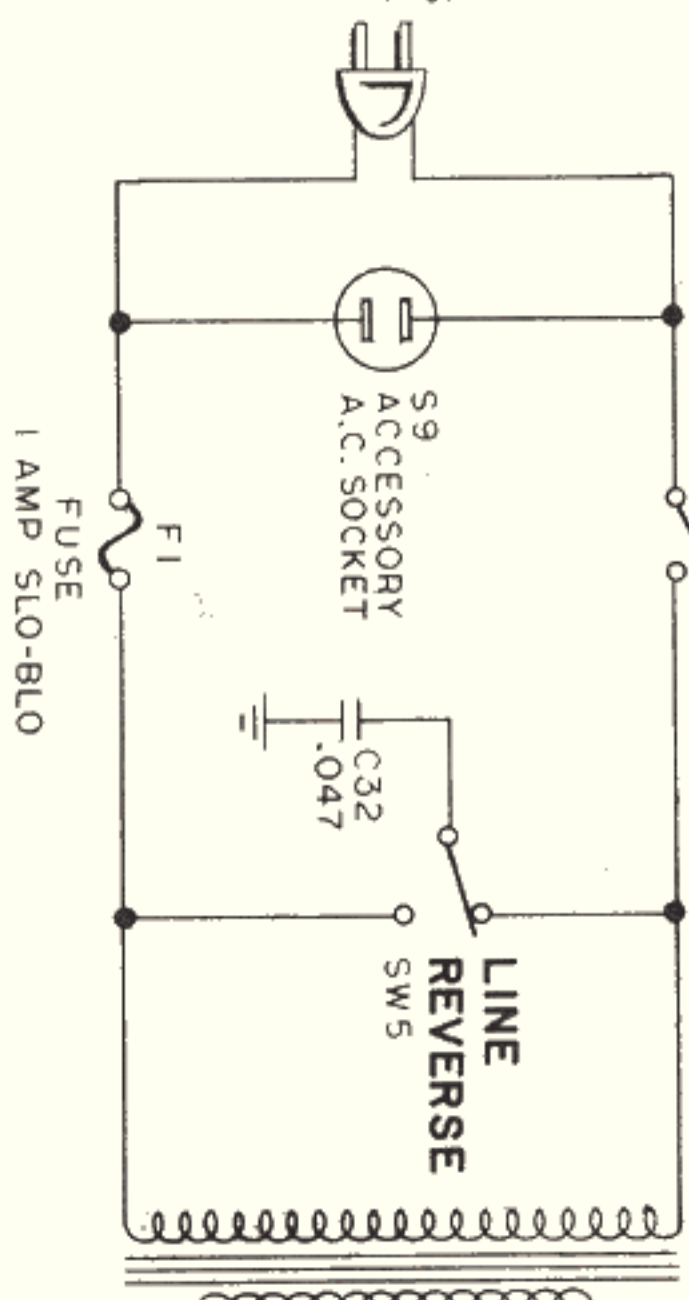
TRANSISTOR INFORMATION



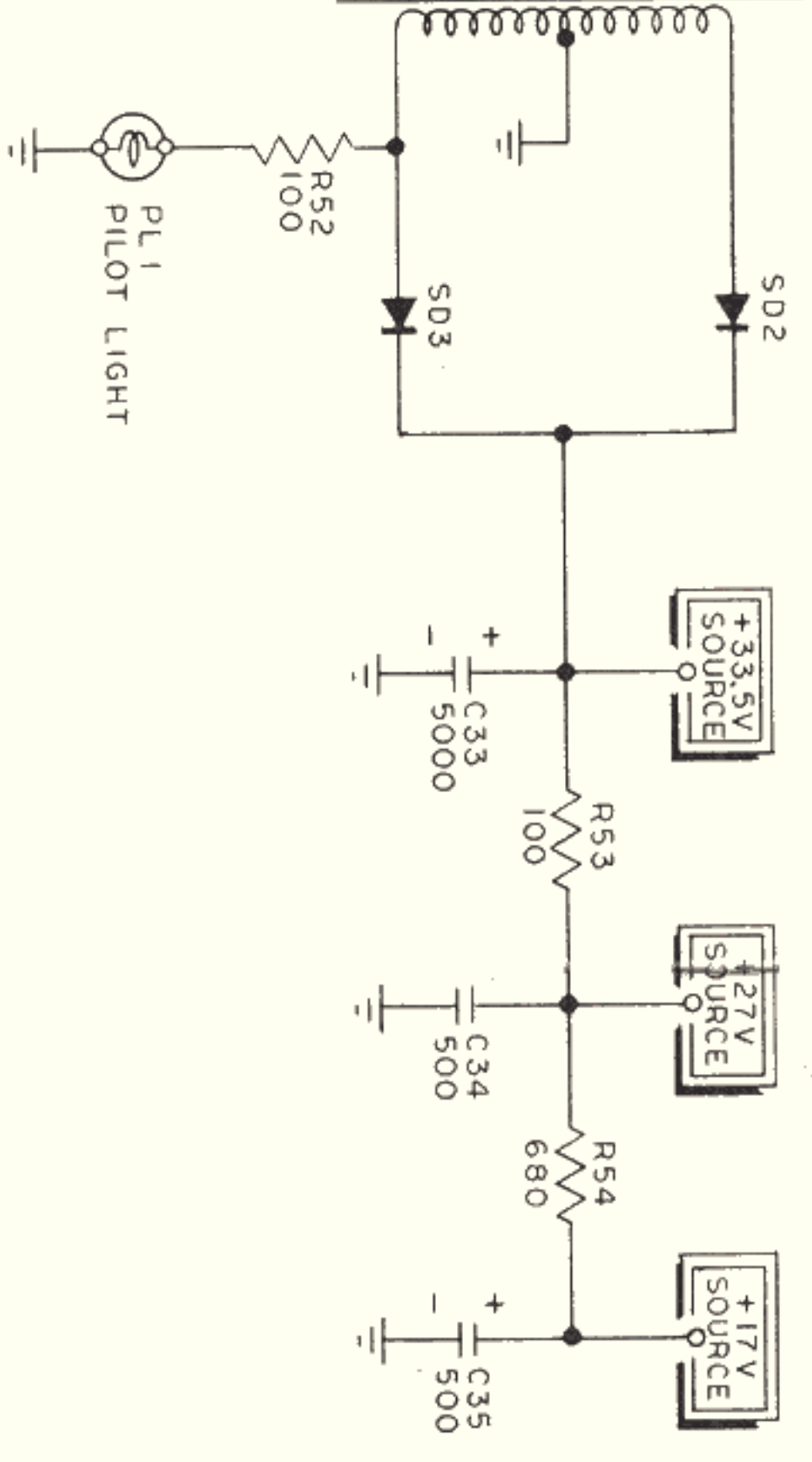
POWER

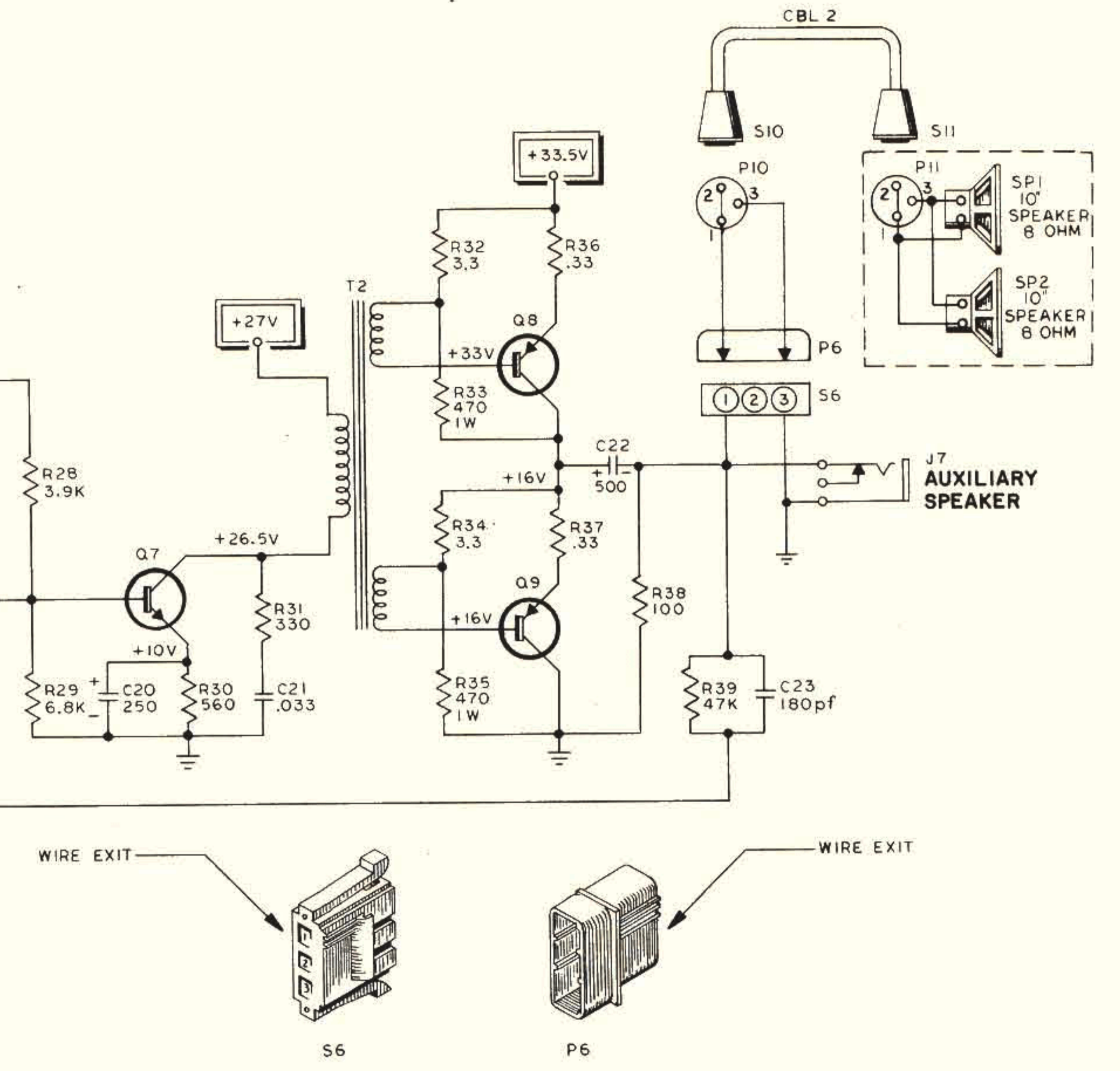
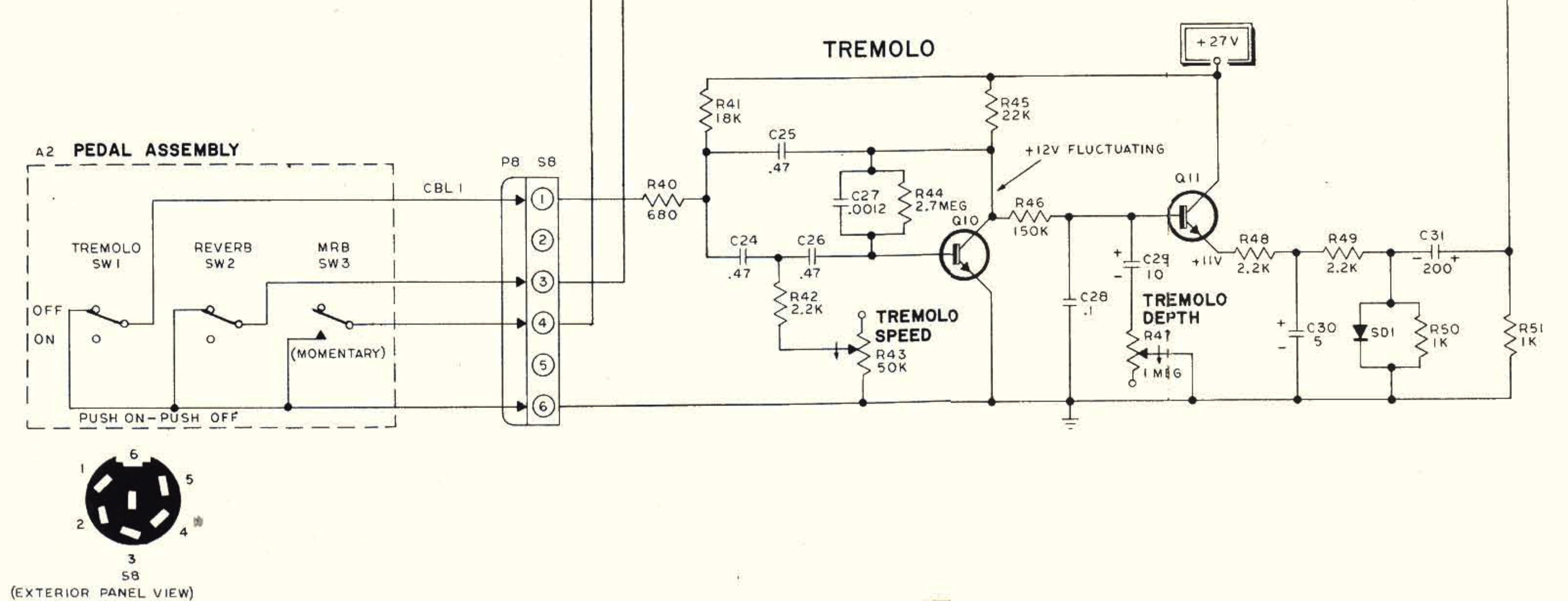
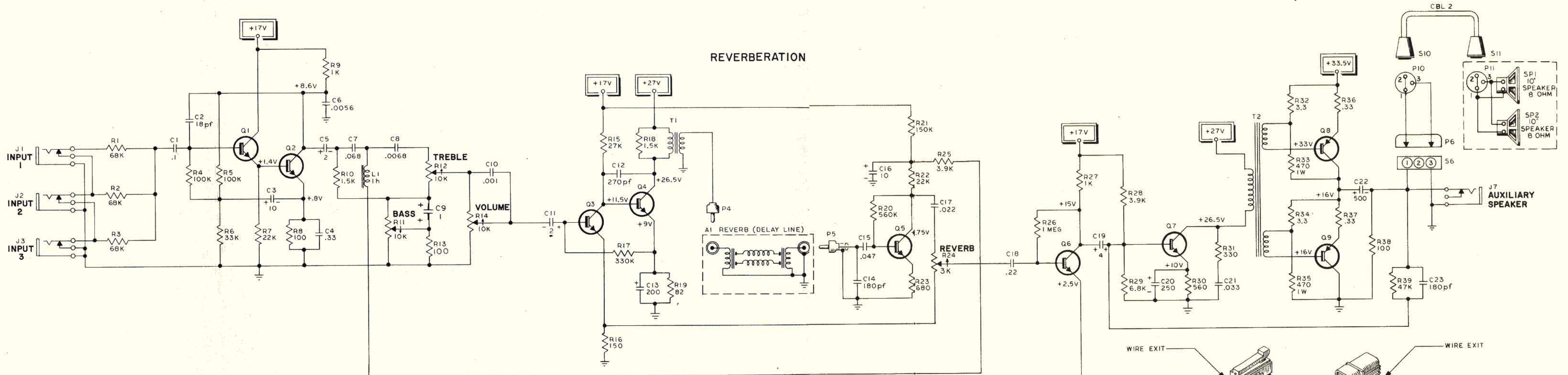
ON-OFF
SW4

120 VOLTS
60 CYCLE
45 WATTS
4.5 AMPS



POWER SUPPLY





GENERAL INFORMATION

This symbol denotes the common connecting points for the various power supply connections throughout the unit. Note that several of these points are marked "source" which denotes the origin of the reference potential.

These symbols both represent B- (amplifier chassis ground).

Arrows indicate the direction of audio signal flow through the circuits.

This symbol indicates plug and socket terminal connections. Where it is not practical to draw the assembly as a complete unit.

1. All capacitors in MFD unless otherwise indicated.
2. All resistors 1/2W 10% unless otherwise indicated.
3. All voltage readings made with 20,000 ohm per volt meter (voltages $\pm 10\%$ with no signal applied).
4. Arrow drawn on pot. arm indicates clockwise rotation.

