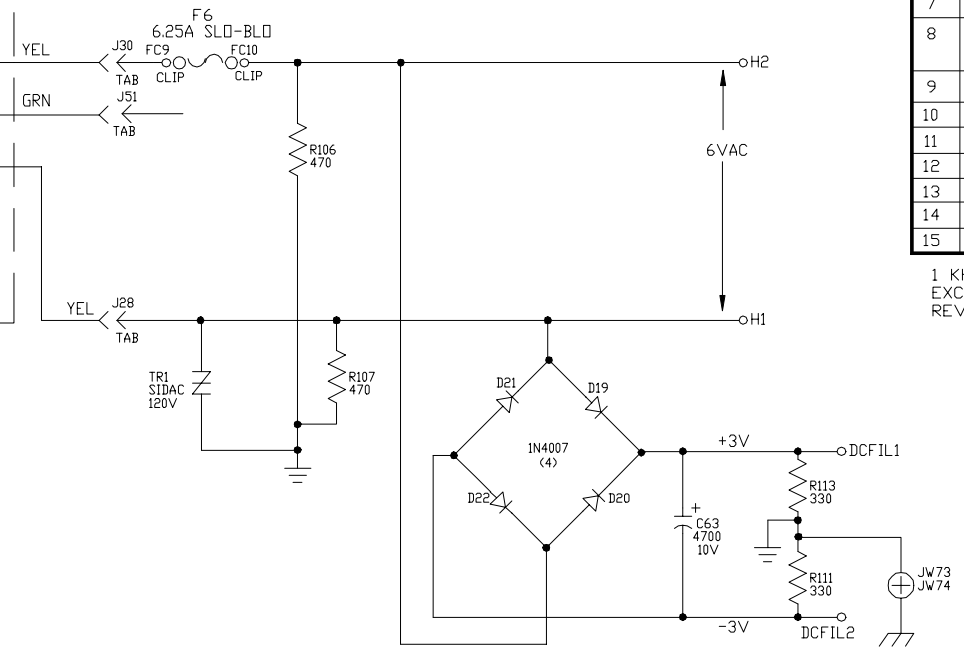
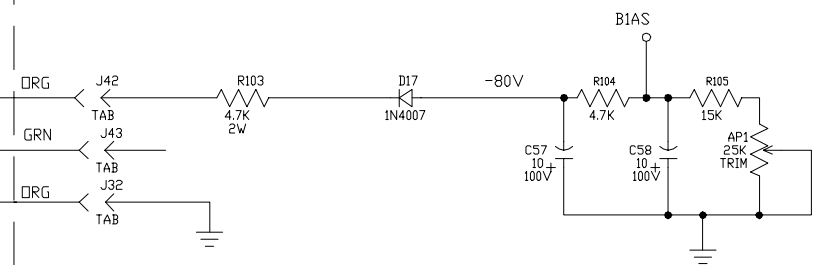
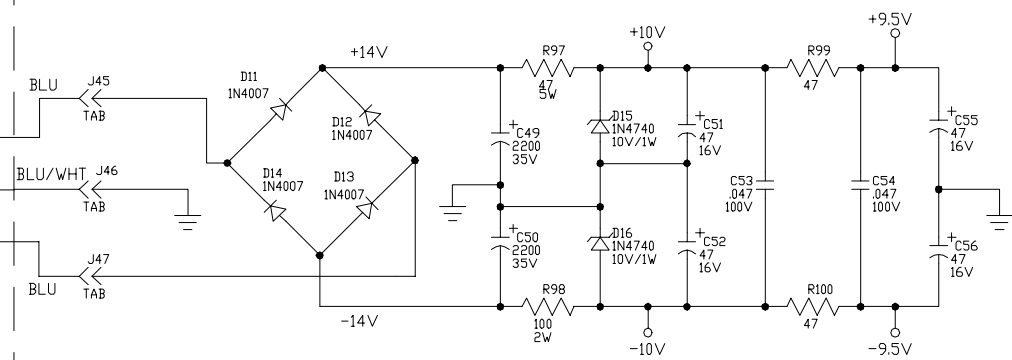


EXPORT WIRING

POWER XFMR  
PART # 94-650-40



TEST POINT CHART

T.P. #	D.C. VOLTAGE NO SIGNAL (V)	SIGNAL, CHANNEL 1 ACTIVE (VP-P)	SIGNAL, CHANNEL 2 ACTIVE (VP-P)
1	205	0.3	0.3
2	215	0.02	0.02
3	215	0.03	2.2
4	185	---	0.14
5	200	---	105
6	215	---	130 (CLIPPED)
7	0	6	
8	0	2 W/.03VP-P SIGNAL FROM REV.	
9	0	0.6	
10	0	1.7	
11	265	22	15 (CLIPPED)
12	0	12	7.5 (CLIPPED)
13	---	0.2VDC	10VDC
14	---	10VDC	0.2VDC
15	---	0.2VDC (FX ON)	10VDC (FX OFF)

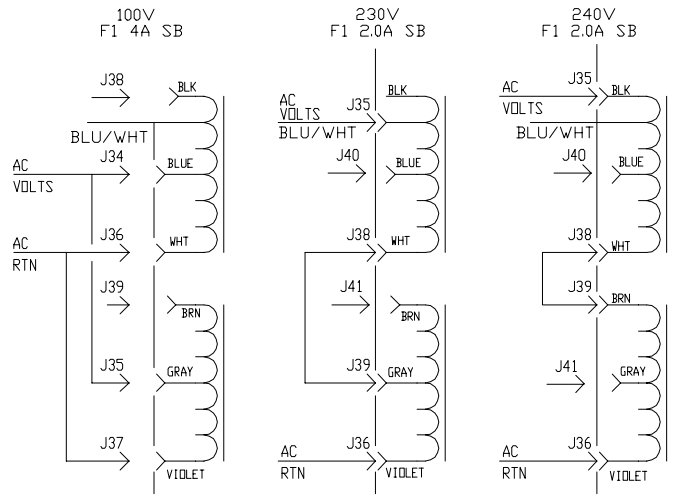
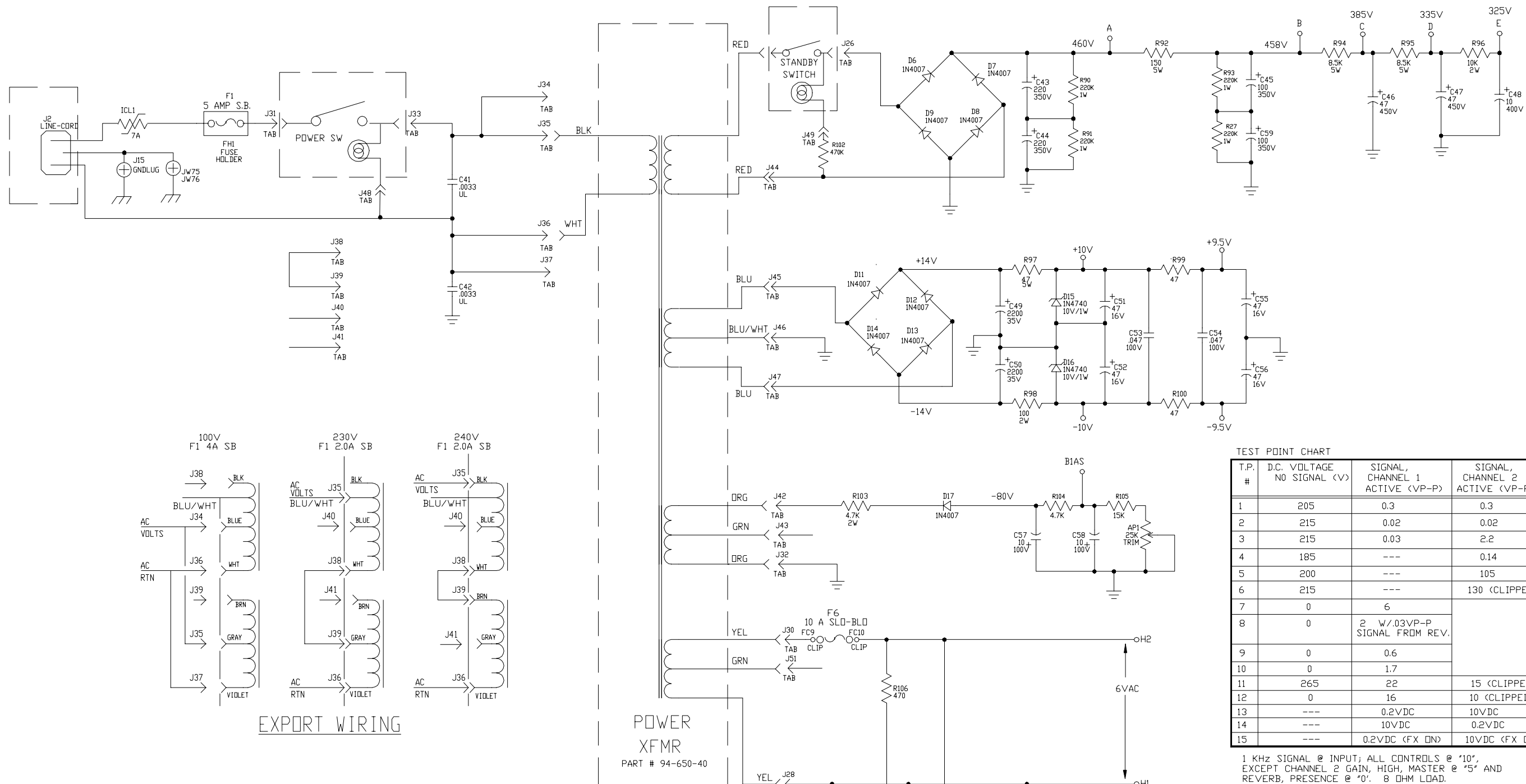
1 KHz SIGNAL @ INPUT; ALL CONTROLS @ "10", EXCEPT CHANNEL 2 GAIN, HIGH, MASTER @ "5" AND REVERB, PRESENCE @ "0". 8 OHM LOAD.

P/N 07-105-02  
SUPERCEDES 07S295-51 !

- NOTES**
- CAUTION: SHOCK HAZARD!! THIS UNIT CONTAINS HAZARDOUS VOLTAGE. DISCONNECT POWER AND BE SURE POWER SUPPLY IS DISCHARGED BEFORE TOUCHING INTERNAL PARTS.
  - UNLESS NOTED, RESISTOR VALUES IN OHMS, 1/4W-5% TOL. CAPACITOR VALUES IN MICROFARADS, 50V-10% TOL.
  - VOLTAGES ARE MEASURED WITH 1 MEGOHM OSCILLOSCOPE AND 10 MEGOHM DIGITAL VOLTMETER.
  - CHASSIS GROUND  $\uparrow$  DIRTY GROUND  $\downarrow$  SIGNAL GROUND  $\pm$

- BIAS CALIBRATION PROCEDURE**
- CONNECT UNIT TO PROPER AC LINE VOLTAGE.
  - ALLOW UNIT TO WARM UP AT LEAST 5 MINUTES.
  - WITH NO SIGNAL APPLIED ADJUST AP1 FOR 85 WATTS (0.8A DOMESTIC) DRAW FROM THE LINE.
  - ALTERNATE METHOD: WITH ENOUGH SIGNAL (CLEAN) TO JUST CLIP OUTPUT ADJUST AP1 FOR SLIGHT CROSSOVER DISTORTION VISIBLE ON OSCILLOSCOPE TRACE.

1	10/4/00	CHGD PARTS PER ECRN N00085	N00085	WFB		
0		CONTROL ISSUE				
INITIAL ISSUE						
REV:	DATE:	DESCRIPTION	ECR/ECN NO:	CHNG'D BY:	APPR'D BY:	DATE:
THIS INFORMATION CONTAINED ON THIS DRAWING IS PROPRIETARY TO ST. LOUIS MUSIC, INC.						
SIGNATURES:		DATE:		11880 Borman Dr. St. Louis, Missouri 63146		
DRAWN:	REM	2/19/99				
CHK'D:			FIRST USED ON:			
RLSD:			BV120HBb			
TOLERANCES:	DRAWING SIZE:	D		DRAWING TITLE:		
		SCHEMATIC		SCHEMATIC - GUITAR AMP		
	CLASS CODE:			DRAWING NO.:		
	SCALE:	NONE		07S105-XX		
	SHEET:	1 of 6				



TEST POINT CHART

T.P. #	D.C. VOLTAGE NO SIGNAL (V)	SIGNAL, CHANNEL 1 ACTIVE (VP-P)	SIGNAL, CHANNEL 2 ACTIVE (VP-P)
1	205	0.3	0.3
2	215	0.02	0.02
3	215	0.03	2.2
4	185	---	0.14
5	200	---	105
6	215	---	130 (CLIPPED)
7	0	6	
8	0	2 W/.03VP-P SIGNAL FROM REV.	
9	0	0.6	
10	0	1.7	
11	265	22	15 (CLIPPED)
12	0	16	10 (CLIPPED)
13	---	0.2VDC	10VDC
14	---	10VDC	0.2VDC
15	---	0.2VDC (FX ON)	10VDC (FX OFF)

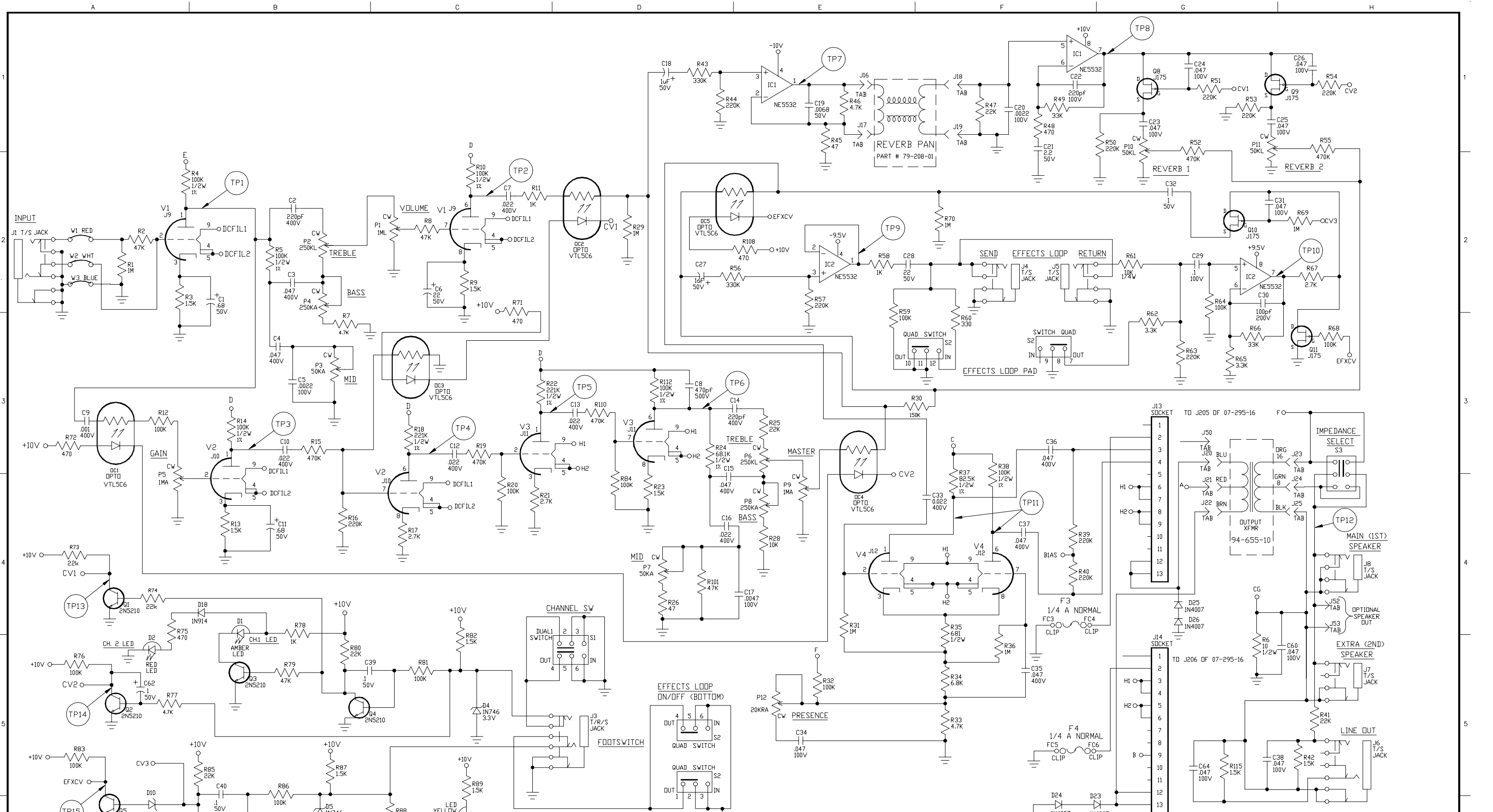
1 KHz SIGNAL @ INPUT; ALL CONTROLS @ '10', EXCEPT CHANNEL 2 GAIN, HIGH, MASTER @ '5' AND REVERB, PRESENCE @ '0'. 8 OHM LOAD.

- NOTES
- CAUTION: SHOCK HAZARD! THIS UNIT CONTAINS HAZARDOUS VOLTAGE. DISCONNECT POWER AND BE SURE POWER SUPPLY IS DISCHARGED BEFORE TOUCHING INTERNAL PARTS.
  - UNLESS NOTED, RESISTOR VALUES IN OHMS, 1/4W-5% TOL. CAPACITOR VALUES IN MICROFARADS, 50V-10% TOL.
  - VOLTAGES ARE MEASURED WITH 1 MEGOHM OSCILLOSCOPE AND 10 MEGOHM DIGITAL VOLTMETER.
  - CHASSIS GROUND  $\uparrow$  DIRTY GROUND  $\nabla$  SIGNAL GROUND  $\pm$

- BIAS CALIBRATION PROCEDURE
- CONNECT UNIT TO PROPER AC LINE VOLTAGE.
  - ALLOW UNIT TO WARM UP AT LEAST 5 MINUTES.
  - WITH NO SIGNAL APPLIED ADJUST AP1 FOR 120 WATTS (1.3A DOMESTIC) DRAW FROM THE LINE.
  - ALTERNATE METHOD: WITH ENOUGH SIGNAL (CLEAN) TO JUST CLIP OUTPUT ADJUST AP1 FOR SLIGHT CROSSOVER DISTORTION VISIBLE ON OSCILLOSCOPE TRACE.

P/N 07-105-01  
SUPERCEDES 07S295-01 I

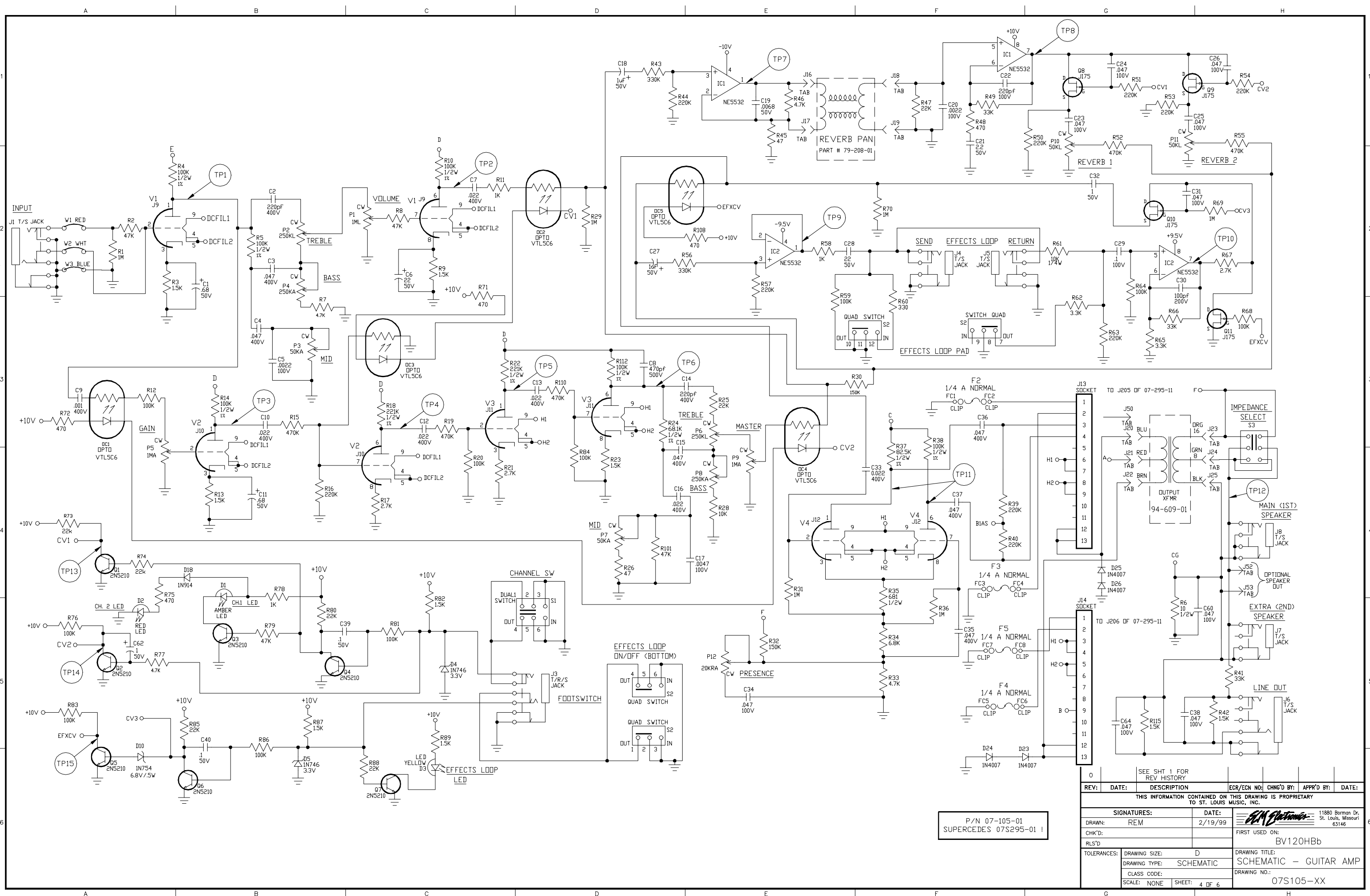
0	SEE SH1 1 FOR REV HISTORY				
REV:	DATE:	DESCRIPTION	ECR/ECN NO:	CHNG'D BY:	APPR'D BY:
THIS INFORMATION CONTAINED ON THIS DRAWING IS PROPRIETARY TO ST. LOUIS MUSIC, INC.					
SIGNATURES:		DATE:	11880 Borman Dr. St. Louis, Missouri 63146		
DRAWN:	REM	2/19/99	FIRST USED ON: BV120HBb		
CHK'D:			DRAWING TITLE: SCHEMATIC - GUITAR AMP		
RLS'D:			DRAWING NO.: 07S105-XX		
TOLERANCES:	DRAWING SIZE: D	SCHEMATIC		SHEET: 2 of 6	



P/N 07-105-02  
SUPERCEDES 07S295-51 !

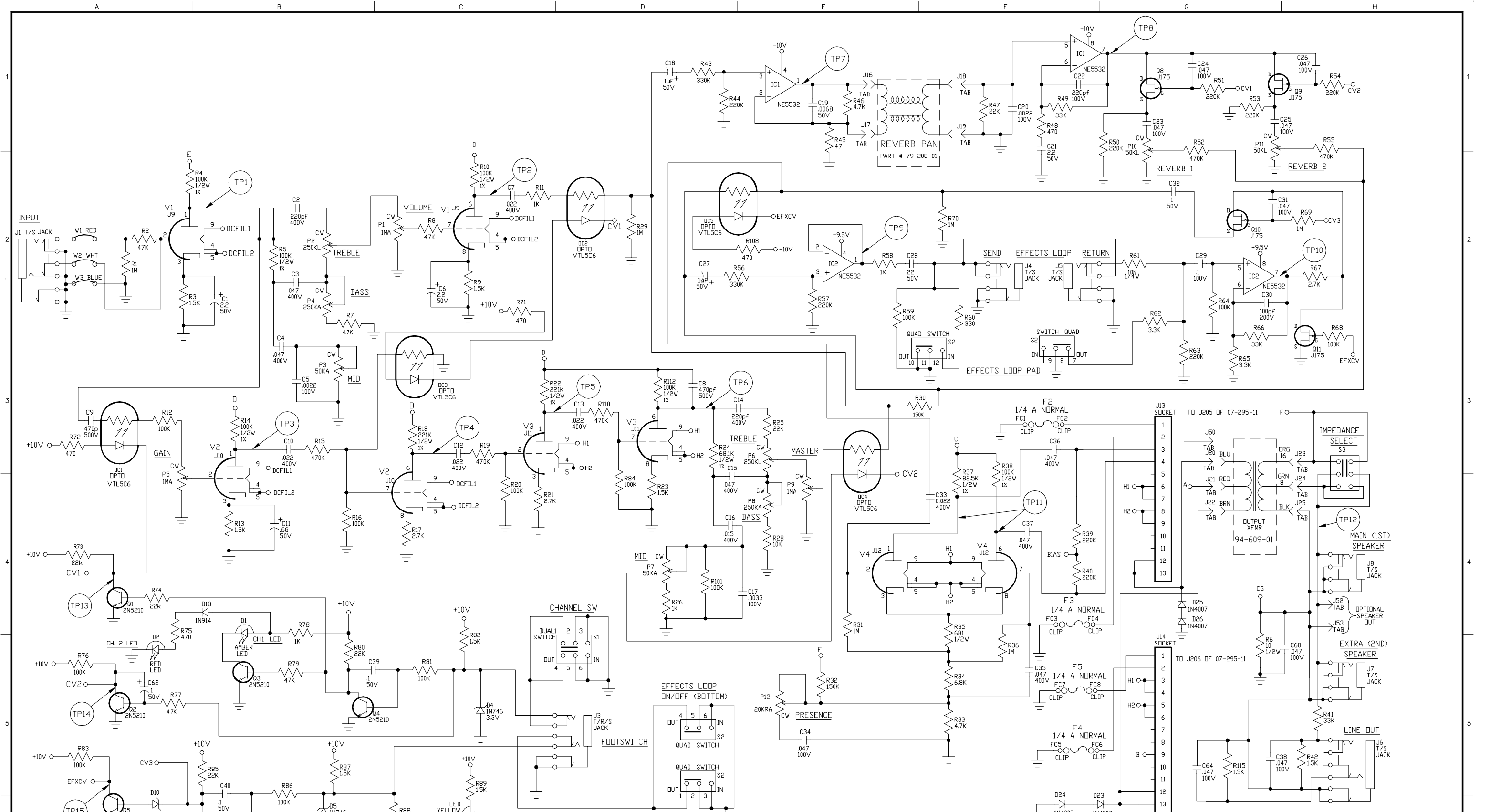
REV:	DATE:	DESCRIPTION:	ECR/ECN NO.:	CHNG'D BY:	APPR'D BY:	DATE:
SEE SH1 FOR REV HISTORY						
THIS INFORMATION CONTAINED ON THIS DRAWING IS PROPRIETARY TO ST. LOUIS MUSIC, INC.						
SIGNATURES:		DATE:		11880 Borman Dr. St. Louis, Missouri 63146		
DRAWN: REM		2/19/99		FIRST USED ON: BV120HBb		
CHK'D:				DRAWING TITLE: SCHEMATIC - GUITAR AMP		
RLS'D:				DRAWING NO.:		
TOLERANCES:		DRAWING SIZE: D		DRAWING NO.:		
		DRAWING TYPE: SCHEMATIC		DRAWING NO.:		
		CLASS CODE:		DRAWING NO.:		
		SCALE: NONE		DRAWING NO.:		
		SHEET: 3 OF 6		DRAWING NO.:		
				DRAWING NO.:		

07S105-XX



P/N 07-105-01  
SUPERCEDES 07S295-01

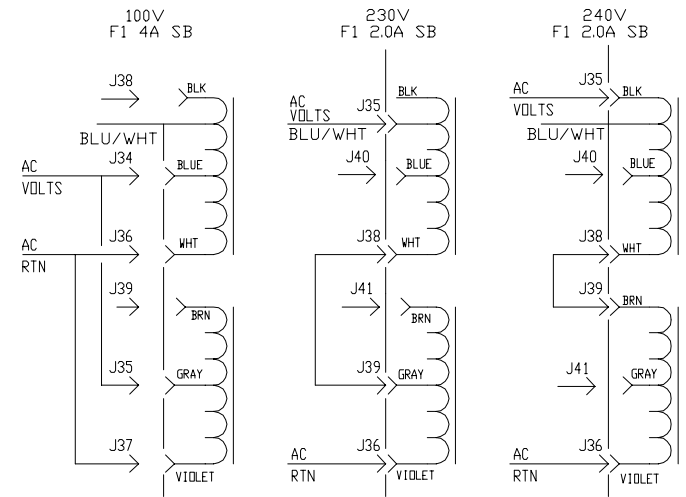
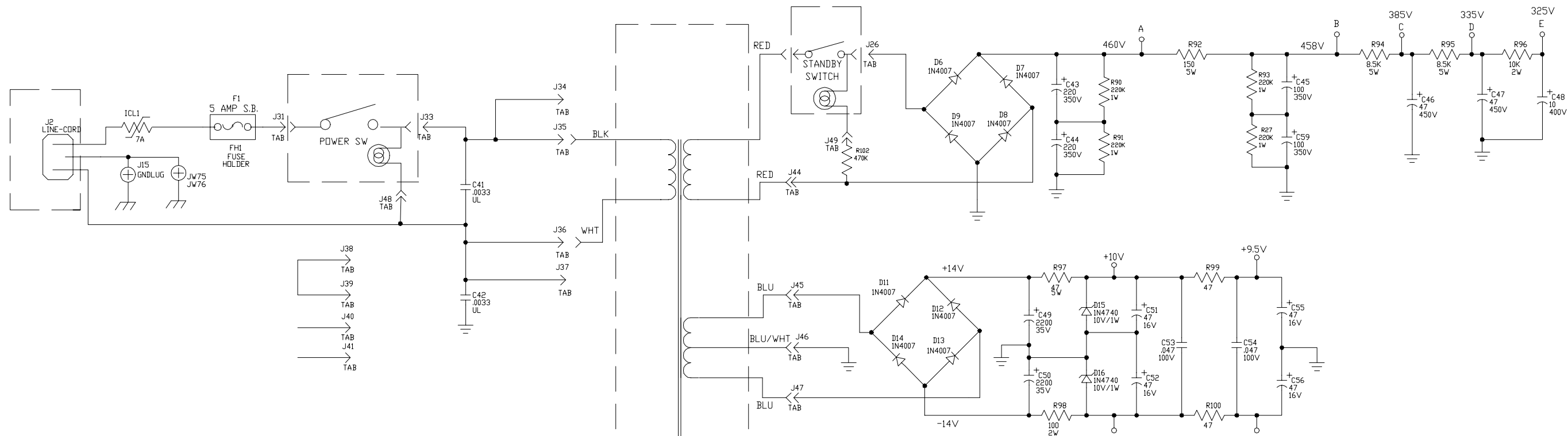
REV:	DATE:	DESCRIPTION:	ECR/ECN NO:	CHNG'D BY:	APPR'D BY:	DATE:
THIS INFORMATION CONTAINED ON THIS DRAWING IS PROPRIETARY TO ST. LOUIS MUSIC, INC.						
SIGNATURES:		DATE:		11880 Borman Dr. St. Louis, Missouri 63146		
DRAWN: REM		2/19/99		FIRST USED ON: BV120HBb		
CHK'D:				DRAWING TITLE: SCHEMATIC - GUITAR AMP		
RLS'D:				DRAWING NO.:		
TOLERANCES:		DRAWING SIZE: D		DRAWING NO.:		
		DRAWING TYPE: SCHEMATIC		DRAWING NO.:		
		CLASS CODE:		DRAWING NO.:		
		SCALE: NONE		DRAWING NO.:		
		SHEET: 4 OF 6		DRAWING NO.:		



P/N 07-105-03  
SUPERCEDES 07S295-02 !

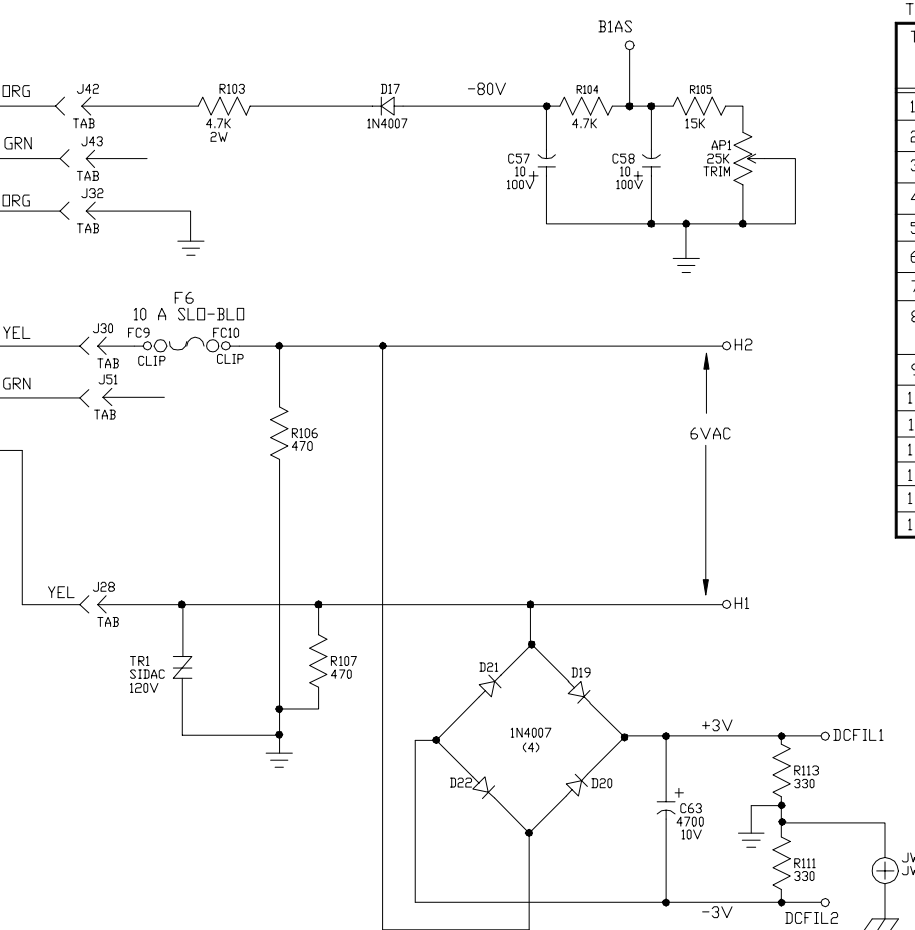
REV:	DATE:	DESCRIPTION	ECR/ECN NO:	CHNG'D BY:	APPR'D BY:	DATE:
THIS INFORMATION CONTAINED ON THIS DRAWING IS PROPRIETARY TO ST. LOUIS MUSIC, INC.						
SIGNATURES:		DATE:				
DRAWN: REM		2/19/99				
CHK'D:				FIRST USED ON: BV120Hb6		
RLS'D:				DRAWING TITLE: SCHEMATIC - GUITAR AMP		
DRAWING SIZE: D		DRAWING TYPE: SCHEMATIC		DRAWING NO.: 07S105-XX		
CLASS CODE:		SCALE: NONE		SHEET: 5 OF 6		

11880 Borman Dr.  
St. Louis, Missouri  
63146



EXPORT WIRING

POWER XFMR  
PART # 94-650-40



TEST POINT CHART

T.P. #	D.C. VOLTAGE NO SIGNAL (V)	SIGNAL, CHANNEL 1 ACTIVE (VP-P)	SIGNAL, CHANNEL 2 ACTIVE (VP-P)
1	205	0.3	0.3
2	215	0.02	0.02
3	215	0.03	2.2
4	185	---	0.07
5	200	---	50
6	215	---	130 (CLIPPED)
7	0	6	
8	0	2 W/0.3VP-P SIGNAL FROM REV.	
9	0	0.6	
10	0	1.7	
11	265	22	15 (CLIPPED)
12	0	16	10 (CLIPPED)
13	---	0.2VDC	10VDC
14	---	10VDC	0.2VDC
15	---	0.2VDC (FX ON)	10VDC (FX OFF)

1 KHz SIGNAL @ INPUT; ALL CONTROLS @ '10', EXCEPT CHANNEL 2 GAIN, HIGH, MASTER @ '5' AND REVERB, PRESENCE @ '0'. 8 OHM LOAD.

P/N 07-105-03  
SUPERCEDES 07S295-02 I

- NOTES**
- CAUTION: SHOCK HAZARD!! THIS UNIT CONTAINS HAZARDOUS VOLTAGE. DISCONNECT POWER AND BE SURE POWER SUPPLY IS DISCHARGED BEFORE TOUCHING INTERNAL PARTS.
  - UNLESS NOTED, RESISTOR VALUES IN OHMS, 1/4W-5% TOL. CAPACITOR VALUES IN MICROFARADS, 50V-10% TOL.
  - VOLTAGES ARE MEASURED WITH 1 MEGOHM OSCILLOSCOPE AND 10 MEGOHM DIGITAL VOLTMETER.
  - CHASSIS GROUND ⚡ DIRTY GROUND ⚡ SIGNAL GROUND ⚡

- BIAS CALIBRATION PROCEDURE**
- CONNECT UNIT TO PROPER AC LINE VOLTAGE.
  - ALLOW UNIT TO WARM UP AT LEAST 5 MINUTES.
  - WITH NO SIGNAL APPLIED ADJUST AP1 FOR 120 WATTS (1.3A DOMESTIC) DRAW FROM THE LINE.
  - ALTERNATE METHOD: WITH ENOUGH SIGNAL (CLEAN) TO JUST CLIP OUTPUT ADJUST AP1 FOR SLIGHT CROSSOVER DISTORTION VISIBLE ON OSCILLOSCOPE TRACE.

0	SEE SHT 1 FOR REV HISTORY				
REV:	DATE:	DESCRIPTION	ECR/ECN NO:	CHNG'D BY:	APPR'D BY:
THIS INFORMATION CONTAINED ON THIS DRAWING IS PROPRIETARY TO ST. LOUIS MUSIC, INC.					
SIGNATURES:		DATE:		11880 Borman Dr. St. Louis, Missouri 63146	
DRAWN: REM		2/19/99		FIRST USED ON: BV120HBb	
CHK'D:				DRAWING TITLE: SCHEMATIC - GUITAR AMP	
TOLERANCES:		DRAWING SIZE: D		DRAWING NO.: 07S105-XX	
		DRAWING TYPE: SCHEMATIC			
		CLASS CODE:			
		SCALE: NONE		SHEET: 6 of 6	