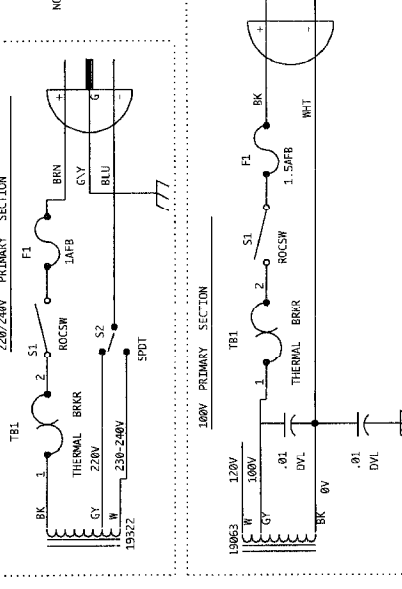


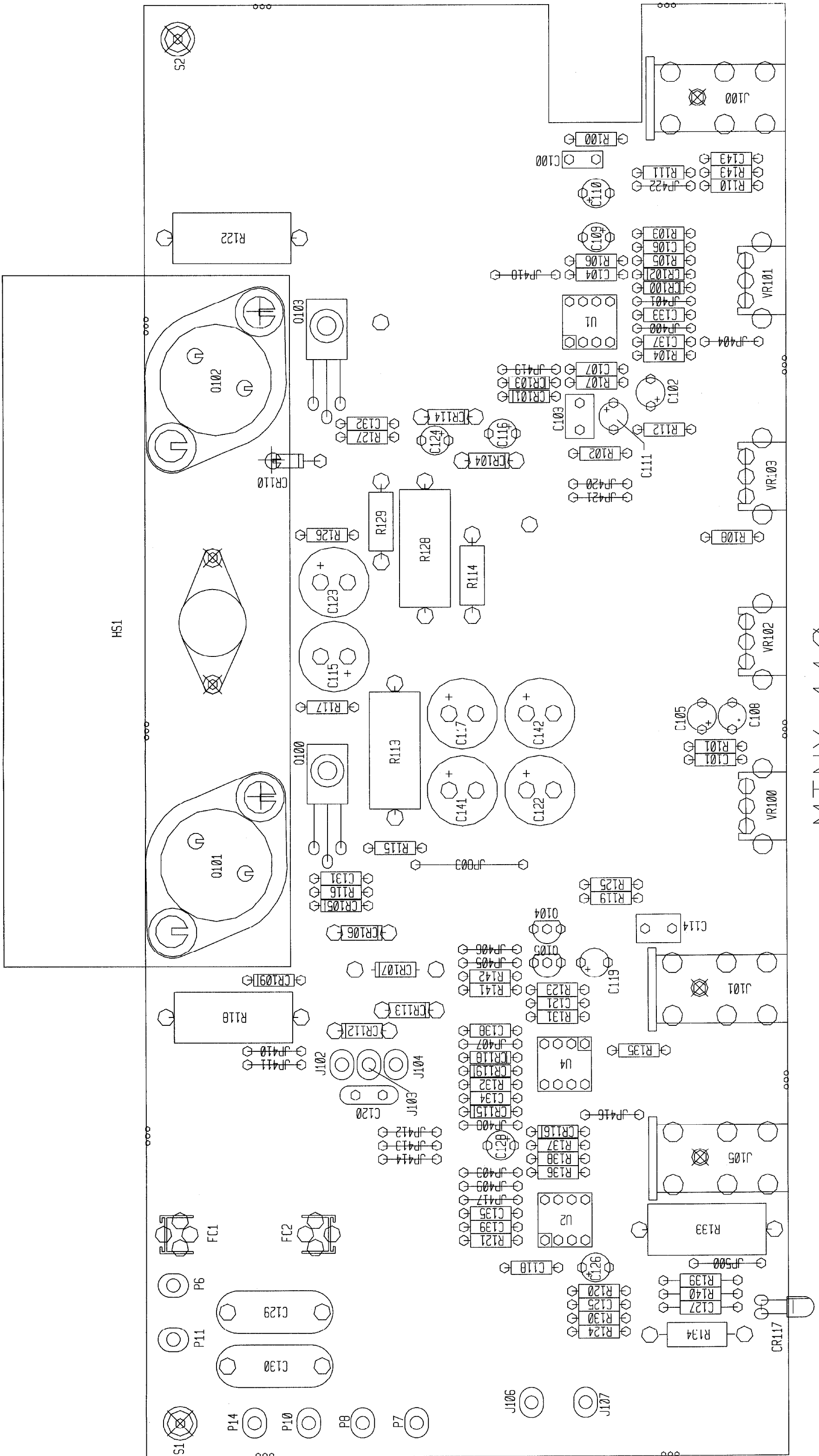
NOTICE: THIS CIRCUITRY IS PROTECTED BY U.S. PATENT NO. 4,318,053 OWNED BY PEAVEY ELECTRONICS CORP. USE OR COPYING WITHOUT EXPRESS WRITTEN AUTHORITY FROM PEAVEY IS STRICTLY FORBIDDEN AND VIOLATORS WILL BE PROSECUTED TO THE FULLEST EXTENT ALLOWED UNDER U.S. PATENT LAWS.

NOTE: THIS IS A BASE SCHEMATIC FOR TWO ASSEMBLIES OF BARE BOARD # 98091081. SEE BOARD LAYOUTS FOR ASSEMBLY DIFFERENCES.

NOTE: ** LOCATED ON HEATSINK



TITLE		MINX 110 '95	
SIZE	CODE	NUMBER	REV
C	C	98091082	A
PRINT	DATE	#6150.624	SHEET 1 OF 1
PEAVEY ELECTRONICS CORP. 711 A STREET MERCIDIAN, MISSISSIPPI 39301			



MINX 110

DO NOT INSERT C129 & C130 FOR EXPORT VERSION.

1	100W1	100W1	70210003	100-1W-5%-MO-T&R	R114
1	1.5K	1.5K	70240018	1.5K-1/4W-5%-CF-T&R	R115
1	33	33	70240004	33-1/4W-5%-CF-T&R	R116
1	100FP	100FP	70240096	100FP-1/4W-5%-FP-T&R	R117
1	.33W5	.33W5	70250003	.33-5W-10%-MW-AXL	R118
1	33K	33K	70240030	33K-1/4W-5%-CF-T&R	R119
1	2.7K	2.7K	70240021	2.7K-1/4W-5%-CF-T&R	R120
1	100FP	100FP	70240096	100FP-1/4W-5%-FP-T&R	R121
1	.33W5	.33W5	70250003	.33-5W-10%-MW-AXL	R122
1	10K	10K	70240025	10K-1/4W-5%-CF-T&R	R123
1	47K	47K	70240031	47K-1/4W-5%-CF-T&R	R124
1	22K	22K	70240029	22K-1/4W-5%-CF-T&R	R125
1	100FP	100FP	70240096	100FP-1/4W-5%-FP-T&R	R126
1	1.5K	1.5K	70240018	1.5K-1/4W-5%-CF-T&R	R127
1	250W5	250W5	70250002	250-5W-10%-MW-AXL	R128
1	100W1	100W1	70210003	100-1W-5%-MO-T&R	R129
1	47K	47K	70240031	47K-1/4W-5%-CF-T&R	R130
1	100	100	70240010	100-1/4W-5%-CF-T&R	R131
1	10K	10K	70240025	10K-1/4W-5%-CF-T&R	R132
1	100W5	100W5	70250006	100-5W-10%-MW-AXL	R133
1	22W1	22W1	70210001	22-1W-5%-MO-T&R	R134
1	2.7K	2.7K	70240021	2.7K-1/4W-5%-CF-T&R	R135
1	1.5K	1.5K	70240018	1.5K-1/4W-5%-CF-T&R	R136
1	2.7K	2.7K	70240021	2.7K-1/4W-5%-CF-T&R	R137
1	1.5K	1.5K	70240018	1.5K-1/4W-5%-CF-T&R	R138
1	47FP	47FP	70240090	47FP-1/4W-5%-FP-T&R	R139
1	1.5K	1.5K	70240018	1.5K-1/4W-5%-CF-T&R	R140
1	2.7K	2.7K	70240021	2.7K-1/4W-5%-CF-T&R	R141
1	47K	47K	70240031	47K-1/4W-5%-CF-T&R	R142
1	15K	15K	70240027	15K-1/4W-5%-CF-T&R	R143
2	250STW	70901856	70901856	SECR, 1/4, R(#4), .187 SW, AL	S1, S2
2	4560	4560	70414560	4560 DUAL OP AMP IC	U1, U2
1	13080	13080	70413080	LM3080N CUSTOM SELECTED	U4
1	POT801	71190801	71190801	50KB 12MM VFC ROTARY D-SHAFT	VR100
2	POT800	71190800	71190800	10KB 12MM VFC ROTARY D-SHAFT	VR101, VR102