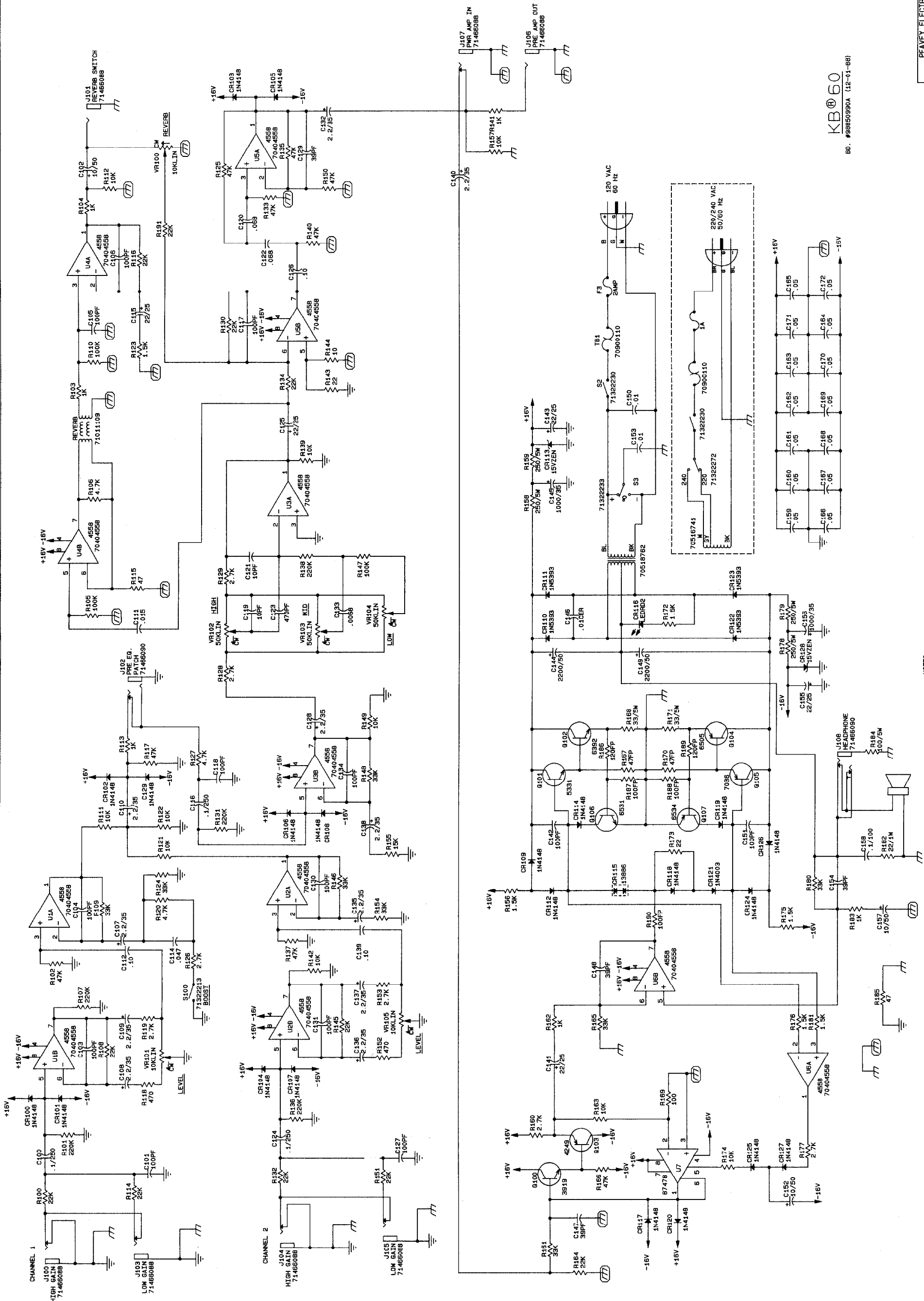
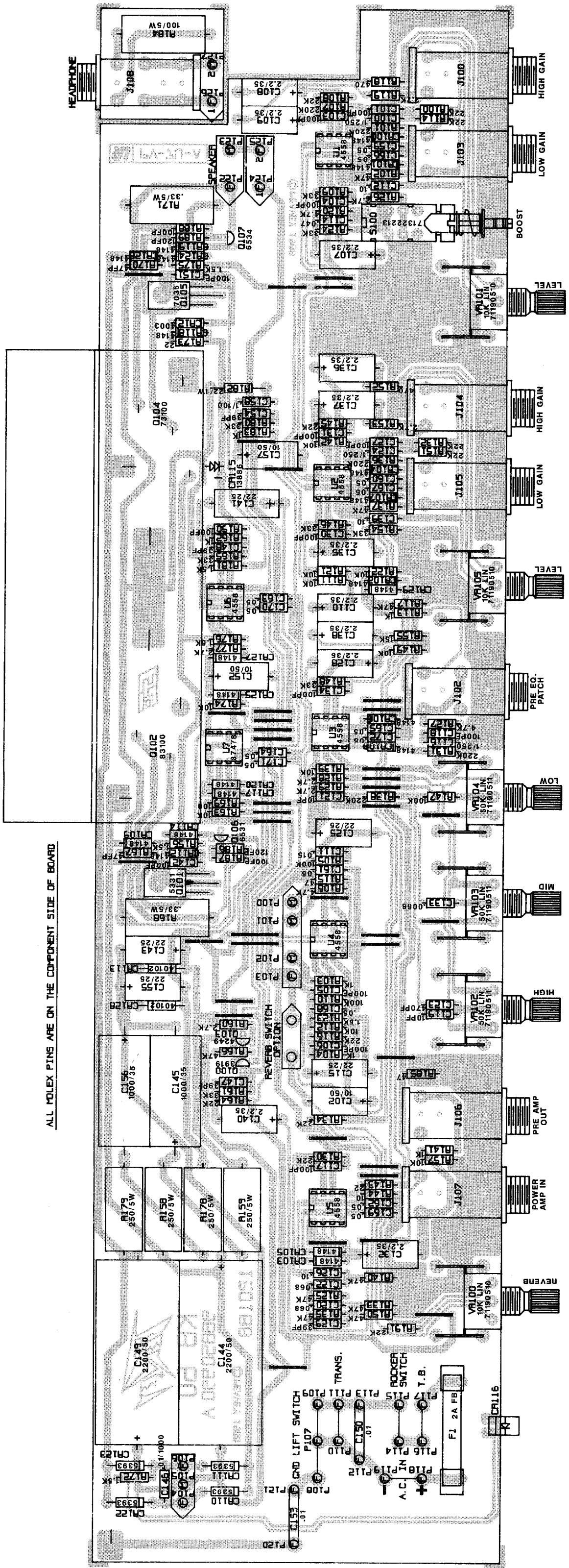


KB 60
 80, #9885090A (12-01-88)



NOTES:
 ALL RESISTORS 1/4W UNLESS NOTED
 ALL RESISTORS IN OHMS UNLESS NOTED
 ALL CAPACITORS IN MFD UNLESS NOTED
 ALL DIODES 1N4148 UNLESS NOTED
 VOLTAGES MAY VARY FROM UNIT TO UNIT
 PARTS LISTED IN PARENTHESIS
 CR128 R154 C171 8137 R1305 J108



ALL MOLEX PINS ARE ON THE COMPONENT SIDE OF BOARD