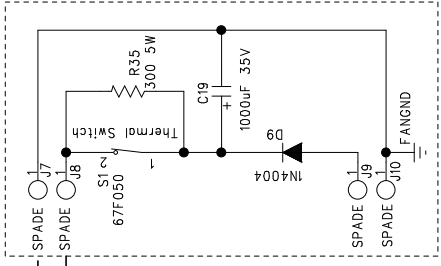


- NOTES (Unless otherwise specified):
1. Values shown are for all models.
  2. All resistor in ohms, 1/4 watt, 5%
  3. PCB part # for all units is 1700100 Module is 700039
  4. VDC will vary by model - See table below.

Fan (Connects to front [Left] module)

For "Mo' Bass" fan circuit, please see separate schematic.

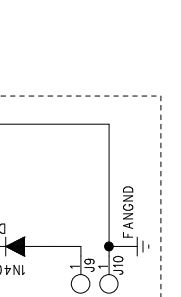
NOTE: While on the same PCB, this circuit is not electrically common to the audio circuit.



VDC Table

Model	+ VDC	- VDC
SM-900	78	78
Mo' Bass	59	59
SM-500	77	77
Bass 350/350x Super Redhead Silverado Black Beauty	79	79
WM4004	79	79

- Q3&Q7 2SC4382
- Q2 2SC3264
- Q8 2SA1668
- Q14 2N5416
- Q6 MPSA56
- Q5&Q13 MPSA06
- Q1&Q2 2SC3264
- Q9-Q12 2SC3264
- Q1&Q2 KTA-1268



Bottom View

All Others Front View

SWR Sound Corp.

SWR2000 - Power Amp Module