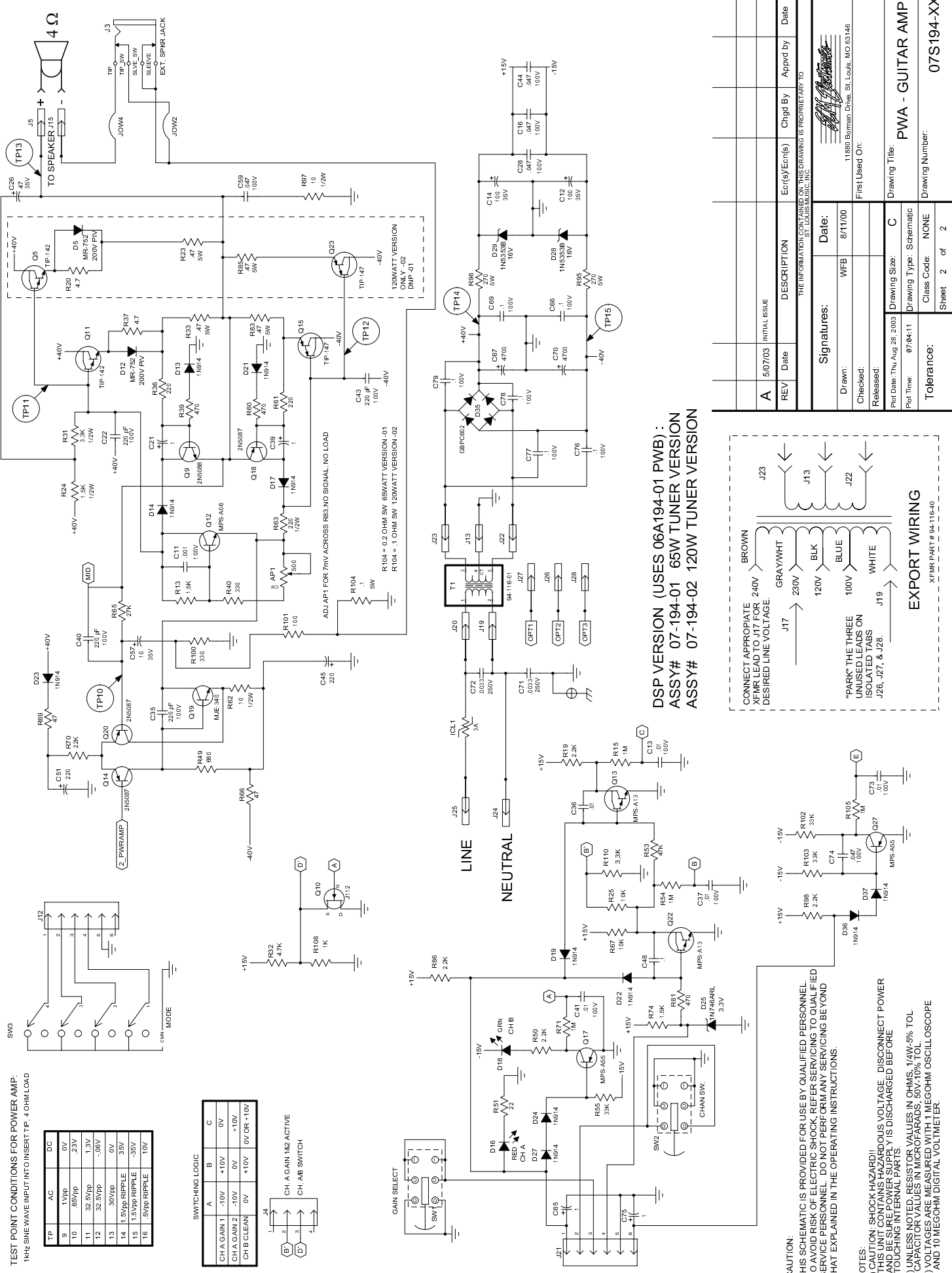
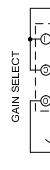
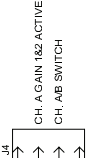


**TEST POINT CONDITIONS FOR POWER AMP:**  
 1kHz SINE WAVE INPUT INTO INSERT TIP. 4 OHM LOAD

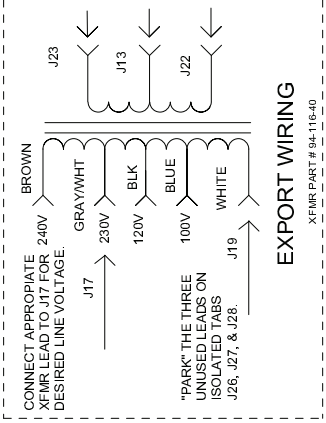
TP	AC	DC
9	1Vpp	0V
10	65Vpp	2.3V
11	32.5Vpp	1.3V
12	32.5Vpp	-0.8V
13	30Vpp	0V
14	1.5Vpp RIPPLE	35V
15	1.5Vpp RIPPLE	-35V
16	.5Vpp RIPPLE	10V

**SWITCHING LOGIC**

	A	B	C
CH A GAIN 1	-10V	+10V	0V
CH A GAIN 2	-10V	0V	+10V
CH B CLEAN	0V	+10V	0V OR +10V



**DSP VERSION (USES 06A194-01 PWB) :**  
**ASSY# 07-194-01 65W TUNER VERSION**  
**ASSY# 07-194-02 120W TUNER VERSION**



REV	Date	DESCRIPTION	Ecr's/Ecn's	Chgd By	Appvd by	Date
A	5/07/03	INITIAL ISSUE				

THE INFORMATION CONTAINED ON THIS DRAWING IS PROPRIETARY TO  
 ST. LOUIS MUSIC, INC.

**Signatures:**  
 Drawn: WFB Date: 8/11/00  
 Checked: [Signature] First Used On: 11880 Borman Drive, St. Louis, MO 63146  
 Released: [Signature]

Plot Date: Thu, Aug 28, 2003 Drawing Size: C  
 Plot Time: 07:54:11 Drawing Type: Schematic  
 Tolerance: NONE Class Code: NONE  
 Sheet 2 of 2

**PWA - GUITAR AMP**  
 Drawing Title: PWA - GUITAR AMP  
 Drawing Number: 07S194-XX

**CAUTION:**  
 THIS SCHEMATIC IS PROVIDED FOR USE BY QUALIFIED PERSONNEL.  
 TO AVOID RISK OF ELECTRIC SHOCK, REFER SERVICING TO QUALIFIED  
 SERVICE PERSONNEL. DO NOT PERFORM ANY SERVICING BEYOND  
 THAT EXPLAINED IN THE OPERATING INSTRUCTIONS.

**NOTES:**  
 1) CAUTION: SHOCK HAZARD!!  
 THIS UNIT CONTAINS HAZARDOUS VOLTAGE. DISCONNECT POWER  
 AND BE SURE POWER SUPPLY IS DISCHARGED BEFORE  
 TOUCHING INTERNAL PARTS.  
 2) UNLESS NOTED, RESISTOR VALUES IN OHMS, 1/4W-5% TOL.  
 CAPACITOR VALUES IN MICROFARADS, 50V-10% TOL.  
 3) VOLTAGES ARE MEASURED WITH 1 MEGOHM OSCILLOSCOPE  
 AND 10 MEGOHM DIGITAL VOLTMETER.